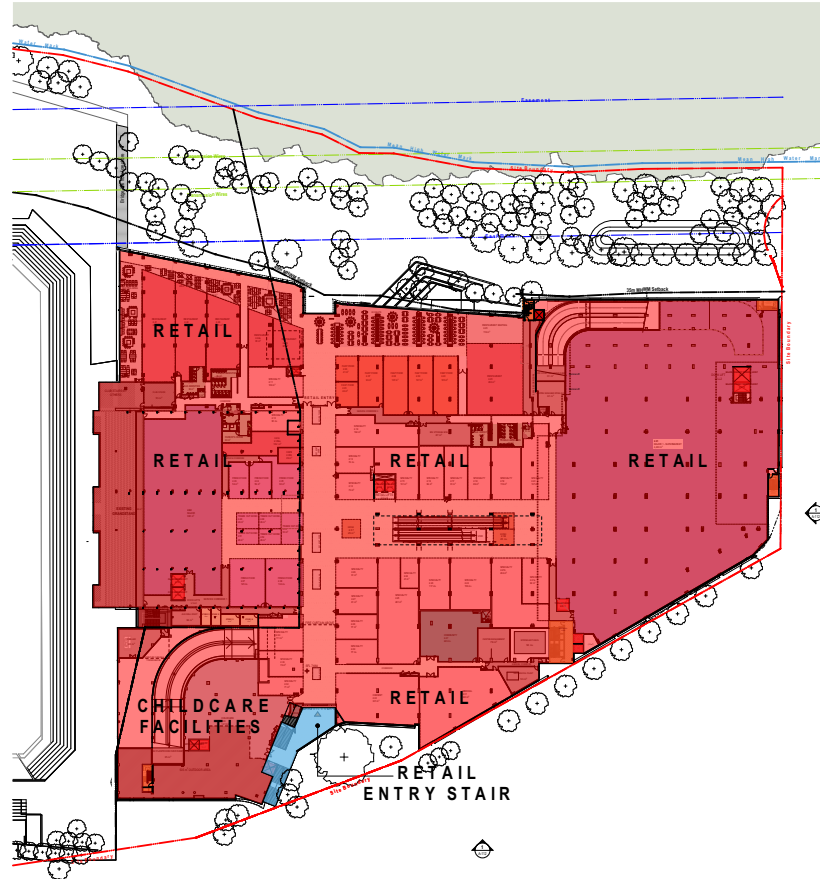
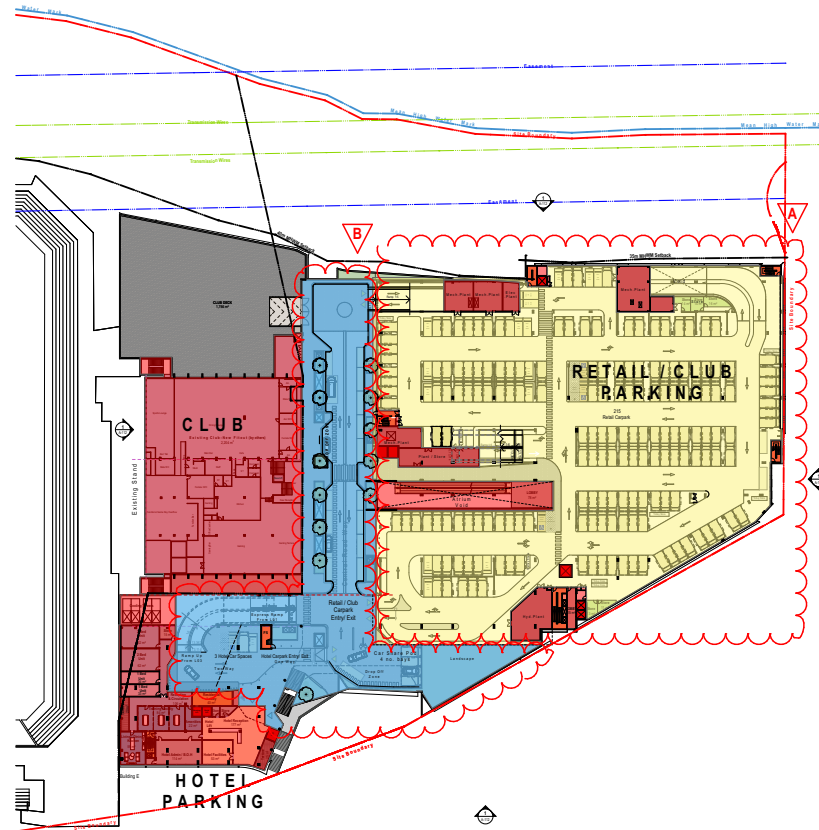


01 GFA Diagram Level 1
1:1000



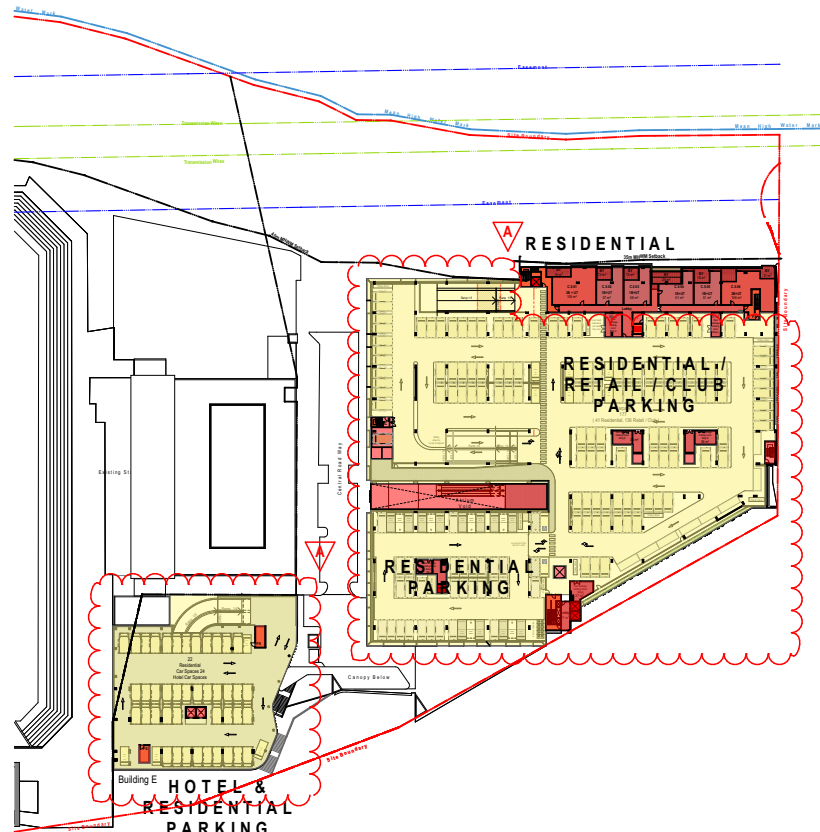
02 GFA Diagram Level 2
1:1000



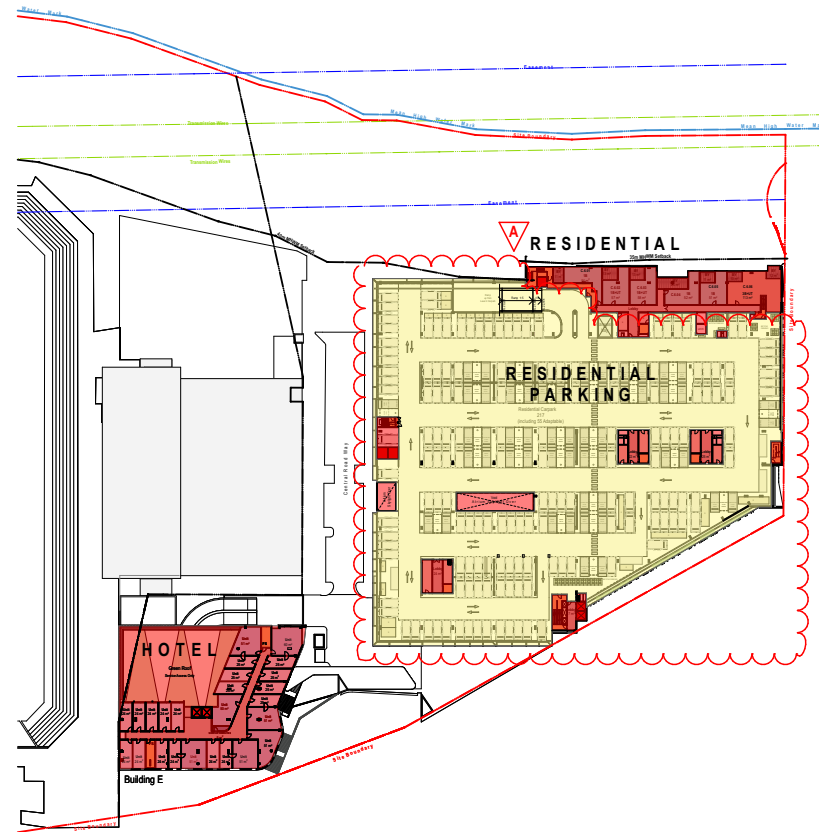
03 GFA Diagram Level 3
1:1000



04 GFA Diagram Level 4
1:1000



05 GFA Diagram Level 5
1:1000



06 GFA Diagram Level 6
1:1000

NOTES
THIS DRAWING IS THE COPYRIGHT © OF TURNER. NO REPRODUCTION WITHOUT PERMISSION. UNLESS NOTED OTHERWISE THIS DRAWING IS NOT FOR CONSTRUCTION. ALL DIMENSIONS AND LEVELS ARE TO BE CHECKED ON SITE PRIOR TO THE COMMENCEMENT OF WORK. REPORT TURNER OF ANY DISCREPANCIES FOR CLARIFICATION BEFORE PROCEEDING WITH WORK. CHANGES ARE NOT TO BE SCALED. USE ONLY PLOTTED DIMENSIONS. REFER TO CORRELATING DOCUMENTATION FOR FURTHER INFORMATION.
DWG, PC AND BAA FILES ARE UNCONTROLLED DOCUMENTS AND ARE ISSUED FOR INFORMATION ONLY.

DLCS Quality Estimated Company 187 807 2000, License Number 4192
Notified Architect Nicholas Turner 4885, ABN 81 584 584 911

KEY PLAN

LEGEND

- PRIVATE RESTRICTED ACCESS
- UNCONTROLLED PUBLIC ACCESS
- CAR PARKS

REVISION NOTES:
A Car Parks zoning added.
B L30 Roadway Public Unrestricted zoning added.



Rev.	Date	Approved by	Revision Notes
A	16.07.17	JM	For Information
B	12.07.17	JM	Updated S7SW Submission
C	04.08.17	JM	Updated S7SW Submission

CLIENT
Bluestone Capital Ventures No. 1 PL
Suite 1, Level 6, 71 Macquarie St Sydney NSW 2000 AU

RETAIL ARCHITECTS
HCR Rice Gundry
Level 1, 110 Walker Street, North Sydney NSW 2060 AU

Project Title
Bay Central Uplift - Concept Plan
Captain Cook Drive Woolsway NSW 2230 AU

Drawing Title
Zoning Diagrams
& Private Areas

Scale	Project No.	Drawn by	North
1:500, 1:1000 @A1, 50% @A3	14020	PM, AT, JM	↑
Status	Dwg No.	Rev	
S7SW Submission	S6-A-722-001	C	

turner
Level 7, ONE Oxford Street
Sydney NSW 2000
Australia
T +61 2 8668 0000
F +61 2 8668 0088
turnerstudio.com.au