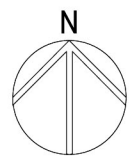


LOT 1			
SITE AREA: 9836 SQ.M			
FSR 0.66:1			
GROUP	UNITS	STOREYS	GFA
1	18	BASEMENT + 3	2574 SQ.M
2	6	2	722 SQ.M
3	18	BASEMENT + 3	2703 SQ.M
4	2	2	244 SQ.M
5	2	2	244 SQ.M
SUBTOTAL: 46 UNITS, 6487 SQ.M GFA			
LOT 2			
SITE AREA: 3004 SQ.M			
FSR 0.60:1			
GROUP	UNITS	STOREYS	GFA
6	12	BASEMENT +2	1802 SQ.M
SUBTOTAL: 12 UNITS, 1802 SQ.M GFA			
TOTAL: 58 UNITS, 8289 SQ.M GFA			

02 SITE PLAN - AERIAL PHOTOGRAPH  
1:1000

# MINMI ROAD FLETCHER

## MASTER PLAN- GROUND FLOOR CONCEPT 03



0 10m 50m 100m ON ORIGINAL AS

**EJE ARCHITECTURE**  
ACN 002 912 843 | ABN 82 644 649 849  
Nominated Architect - Benard Collins  
NSW Architects Registration No.4438  
P +61 2 4920 2283 | F +61 2 4920 3089 | E mail@eje.com.au | W www.eje.com.au

COMPLETION OF THE QUALITY ASSURANCE CHECKS IS VERIFICATION THAT THE DOCUMENT CONFORMS WITH THE REQUIREMENTS OF THE QUALITY PROJECT PLAN. WHERE THE QUALITY ASSURANCE CHECK IS INCOMPLETE, THIS DOCUMENT IS PRELIMINARY FOR INFORMATION PURPOSES ONLY, OR SUCH PURPOSES AS STATED IN THE REVISION COLUMN.

THE IDEAS, INFORMATION AND CONCEPTS CONTAINED IN THIS DOCUMENT ARE THE PROPERTY OF EJE ARCHITECTURE. PHOTOCOPYING OR REPRODUCING THIS DOCUMENT AND PASSING IT ON TO OTHERS WITHOUT THE EXPRESS PERMISSION OF EJE ARCHITECTURE IS AN INFRINGEMENT OF COPYRIGHT. ©

PRELIMINARY - 19/10/17







# MINMI ROAD FLETCHER

CONCEPT RENDERING 01 - SITE PLAN

PRELIMINARY - 08/11/17

## EJE ARCHITECTURE

ACN 002 912 843 | ABN 82 644 649 849  
 Nominated Architect - Bernard Collins  
 NSW Architects Registration No. 4438  
 P +61 2 4620 2353 | F +61 2 4620 3069 | E [mail@eje.com.au](mailto:mail@eje.com.au) | W [www.eje.com.au](http://www.eje.com.au)

COMPLETION OF THE QUALITY ASSURANCE CHECKS IS VERIFICATION THAT THE DOCUMENT CONFORMS WITH THE REQUIREMENTS OF THE QUALITY PROJECT PLAN. WHERE THE QUALITY ASSURANCE CHECK IS INCOMPLETE THIS DOCUMENT IS PRELIMINARY FOR INFORMATION PURPOSES ONLY. OR SUCH PURPOSES AS STATED IN THE REVISION COLUMN.

THE IDEAS, INFORMATION AND CONCEPTS CONTAINED IN THIS DOCUMENT ARE THE PROPERTY OF EJE ARCHITECTURE. PHOTOCOPYING OR REPRODUCING THIS DOCUMENT AND PASSING IT ONTO OTHERS WITHOUT THE EXPRESS PERMISSION OF EJE ARCHITECTURE IS AN INFRINGEMENT OF COPYRIGHT. ©







# MINMI ROAD FLETCHER

CONCEPT RENDERING 02 - AERIAL PERSPECTIVE

PRELIMINARY - 08/11/17

## EJE ARCHITECTURE

ACN 002 912 843 | ABN 82 644 649 849  
 Nominated Architect - Bernard Collins  
 NSW Architects Registration No. 4438  
 P +61 2 4620 2353 | F +61 2 4620 3069 | E [mail@eje.com.au](mailto:mail@eje.com.au) | W [www.eje.com.au](http://www.eje.com.au)

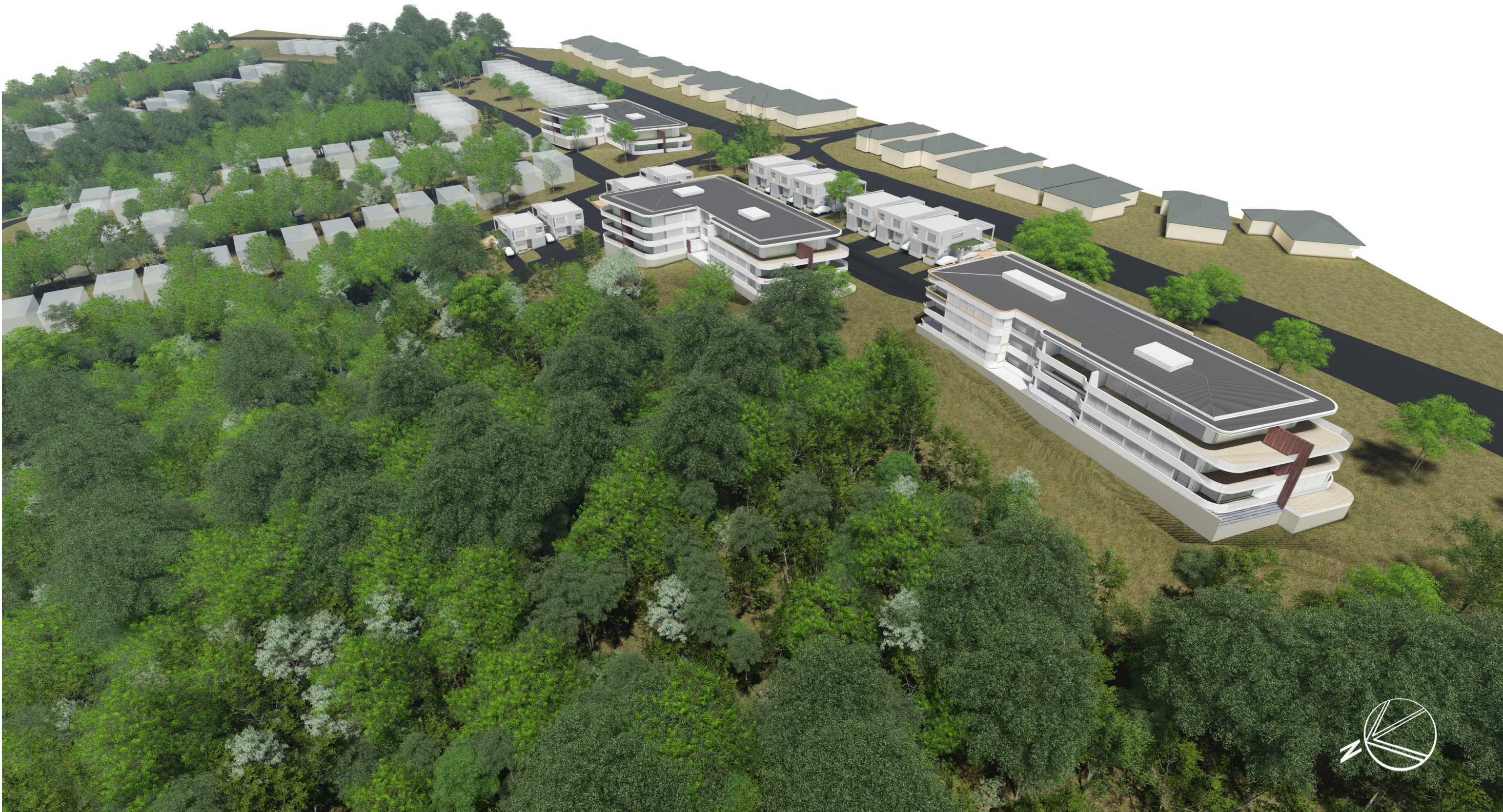
COMPLETION OF THE QUALITY ASSURANCE CHECKS IS VERIFICATION THAT THE DOCUMENT CONFORMS WITH THE REQUIREMENTS OF THE QUALITY PROJECT PLAN. WHERE THE QUALITY ASSURANCE CHECK IS INCOMPLETE THIS DOCUMENT IS PRELIMINARY FOR INFORMATION PURPOSES ONLY, OR SUCH PURPOSES AS STATED IN THE REVISION COLUMN.

THE IDEAS, INFORMATION AND CONCEPTS CONTAINED IN THIS DOCUMENT ARE THE PROPERTY OF EJE ARCHITECTURE. PHOTOCOPYING OR REPRODUCING THIS DOCUMENT AND PASSING IT ONTO OTHERS WITHOUT THE EXPRESS PERMISSION OF EJE ARCHITECTURE IS AN INFRINGEMENT OF COPYRIGHT. ©

0 10mm 50mm 100mm ON ORIGINAL A3

**EJE** architecture





# MINMI ROAD FLETCHER

CONCEPT RENDERING 03 - PERSPECTIVE, LOOKING EAST

PRELIMINARY - 08/11/17

## EJE ARCHITECTURE

ACN 002 912 843 | ABN 82 844 848 849  
 Nominated Architect - Bernard Collins  
 NSW Architects Registration No. 4438  
 P +61 2 4620 2353 | F +61 2 4620 3069 | E [mail@eje.com.au](mailto:mail@eje.com.au) | W [www.eje.com.au](http://www.eje.com.au)

COMPLETION OF THE QUALITY ASSURANCE CHECKS IS VERIFICATION THAT THE DOCUMENT CONFORMS WITH THE REQUIREMENTS OF THE QUALITY PROJECT PLAN. WHERE THE QUALITY ASSURANCE CHECK IS INCOMPLETE THIS DOCUMENT IS PRELIMINARY FOR INFORMATION PURPOSES ONLY. OR SUCH PURPOSES AS STATED IN THE REVISION COLUMN.

THE IDEAS, INFORMATION AND CONCEPTS CONTAINED IN THIS DOCUMENT ARE THE PROPERTY OF EJE ARCHITECTURE. PHOTOCOPYING OR REPRODUCING THIS DOCUMENT AND PASSING IT ONTO OTHERS WITHOUT THE EXPRESS PERMISSION OF EJE ARCHITECTURE IS AN INFRINGEMENT OF COPYRIGHT. ©

0 10mm 50mm 100mm ON ORIGINAL A3







# MINMI ROAD FLETCHER

CONCEPT RENDERING 04 - PERSPECTIVE, LOOKING WEST

PRELIMINARY - 08/11/17

**EJE ARCHITECTURE**

ACN 002 912 843 | ABN 82 644 649 849  
Nominated Architect - Bernard Collins  
NSW Architects Registration No. 4438  
P +61 2 4620 2353 | F +61 2 4620 3069 | E [mail@eje.com.au](mailto:mail@eje.com.au) | W [www.eje.com.au](http://www.eje.com.au)

COMPLETION OF THE QUALITY ASSURANCE CHECKS IS VERIFICATION THAT THE DOCUMENT CONFORMS WITH THE REQUIREMENTS OF THE QUALITY PROJECT PLAN. WHERE THE QUALITY ASSURANCE CHECK IS INCOMPLETE THIS DOCUMENT IS PRELIMINARY FOR INFORMATION PURPOSES ONLY, OR SUCH PURPOSES AS STATED IN THE REVISION COLUMN.

THE IDEAS, INFORMATION AND CONCEPTS CONTAINED IN THIS DOCUMENT ARE THE PROPERTY OF EJE ARCHITECTURE. PHOTOCOPYING OR REPRODUCING THIS DOCUMENT AND PASSING IT ON TO OTHERS WITHOUT THE EXPRESS PERMISSION OF EJE ARCHITECTURE IS AN INFRINGEMENT OF COPYRIGHT. ©







# MINMI ROAD FLETCHER

CONCEPT RENDERING 05 - PERSPECTIVE, LOOKING SOUTH UP SUBDIVISION ROAD NO. 1 TO HIGHLAND WAY

PRELIMINARY - 08/11/17

## EJE ARCHITECTURE

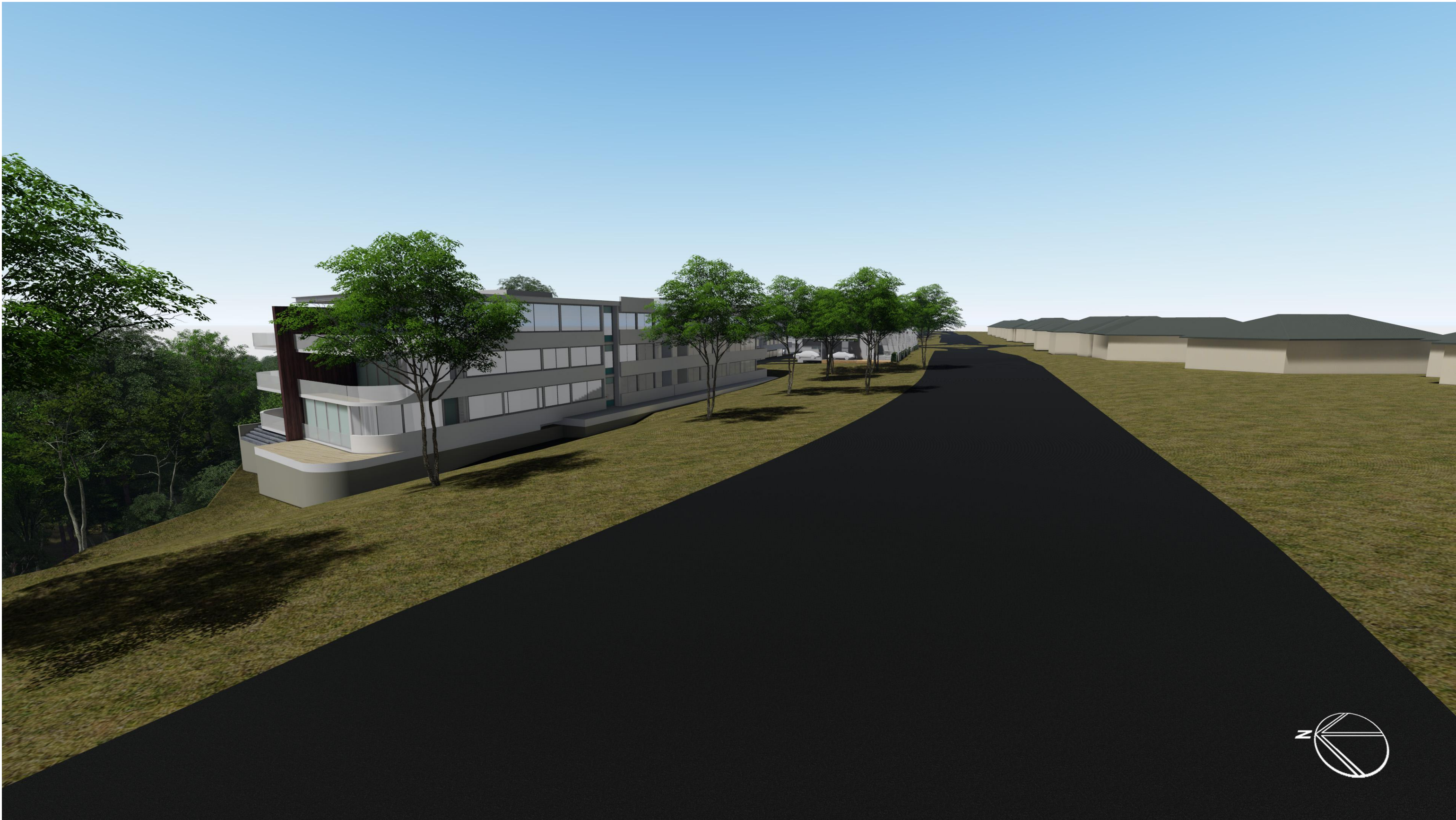
ACN 002 912 843 | ABN 82 644 649 849  
 Nominated Architect - Bernard Collins  
 NSW Architects Registration No. 4438  
 P +61 2 4620 2353 | F +61 2 4620 3069 | E [mail@eje.com.au](mailto:mail@eje.com.au) | W [www.eje.com.au](http://www.eje.com.au)

COMPLETION OF THE QUALITY ASSURANCE CHECKS IS VERIFICATION THAT THE DOCUMENT CONFORMS WITH THE REQUIREMENTS OF THE QUALITY PROJECT PLAN. WHERE THE QUALITY ASSURANCE CHECK IS INCOMPLETE THIS DOCUMENT IS PRELIMINARY FOR INFORMATION PURPOSES ONLY. OR SUCH PURPOSES AS STATED IN THE REVISION COLUMN.

THE IDEAS, INFORMATION AND CONCEPTS CONTAINED IN THIS DOCUMENT ARE THE PROPERTY OF EJE ARCHITECTURE. PHOTOCOPYING OR REPRODUCING THIS DOCUMENT AND PASSING IT ONTO OTHERS WITHOUT THE EXPRESS PERMISSION OF EJE ARCHITECTURE IS AN INFRINGEMENT OF COPYRIGHT. ©







# MINMI ROAD FLETCHER

CONCEPT RENDERING 06 - PERSPECTIVE, LOOKING EAST ALONG MINMI ROAD

PRELIMINARY - 08/11/17

**EJE ARCHITECTURE**  
ACN 002 912 843 | ABN 82 844 849 849  
Nominated Architect - Bernard Collins  
NSW Architects Registration No. 4438  
A 412 KING STREET, NEWCASTLE, NSW 2300  
P +61 2 4929 2353 | F +61 2 4929 3069 | E [mail@eje.com.au](mailto:mail@eje.com.au) | W [www.eje.com.au](http://www.eje.com.au)

COMPLETION OF THE QUALITY ASSURANCE CHECKS IS VERIFICATION THAT THE DOCUMENT CONFORMS WITH THE REQUIREMENTS OF THE QUALITY PROJECT PLAN. WHERE THE QUALITY ASSURANCE CHECK IS INCOMPLETE THIS DOCUMENT IS PRELIMINARY FOR INFORMATION PURPOSES ONLY, OR SUCH PURPOSES AS STATED IN THE REVISION COLUMN.

THE IDEAS, INFORMATION AND CONCEPTS CONTAINED IN THIS DOCUMENT ARE THE PROPERTY OF EJE ARCHITECTURE. PHOTOCOPYING OR REPRODUCING THIS DOCUMENT AND PASSING IT ONTO OTHERS WITHOUT THE EXPRESS PERMISSION OF EJE ARCHITECTURE IS AN INFRINGEMENT OF COPYRIGHT. ©

0 10mm 50mm 100mm ON ORIGINAL A3

