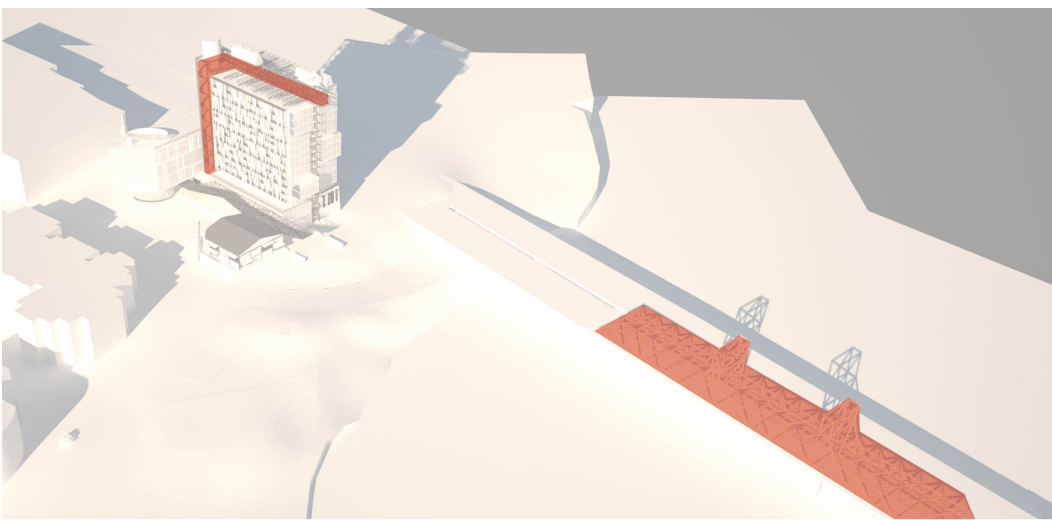
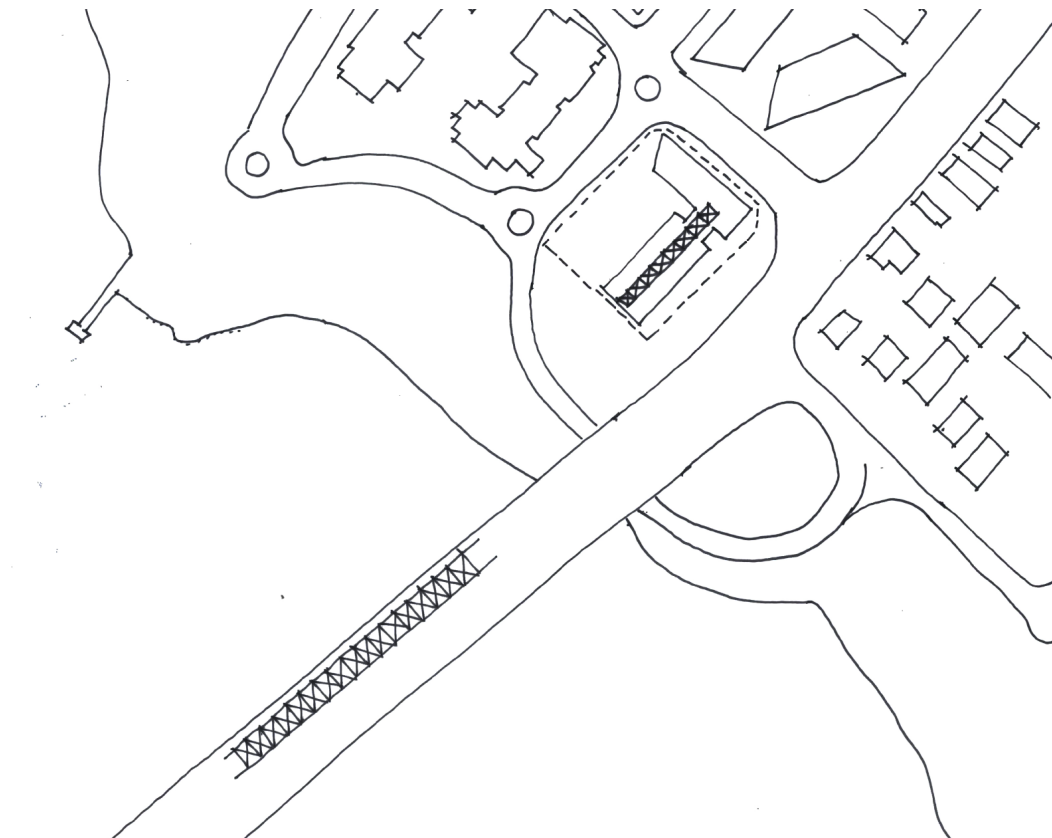




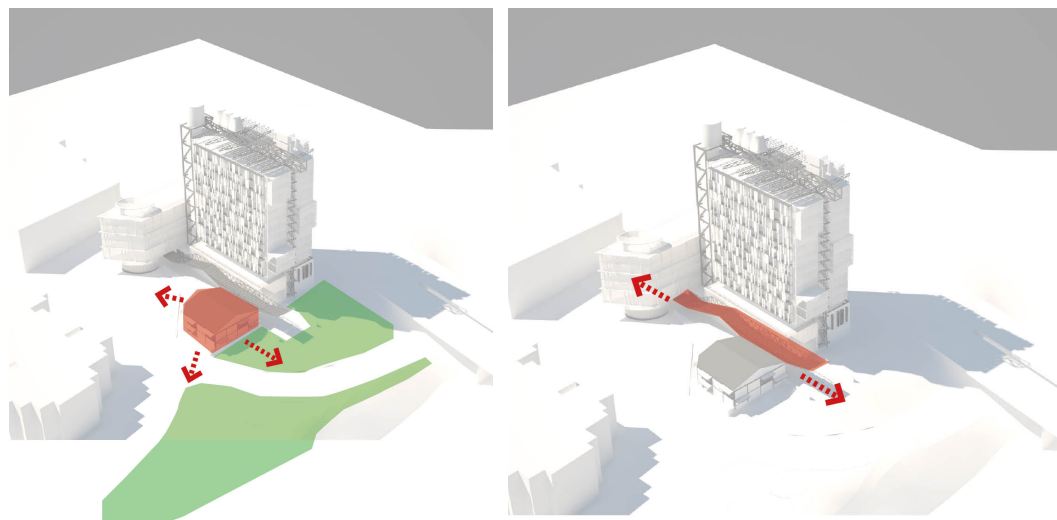
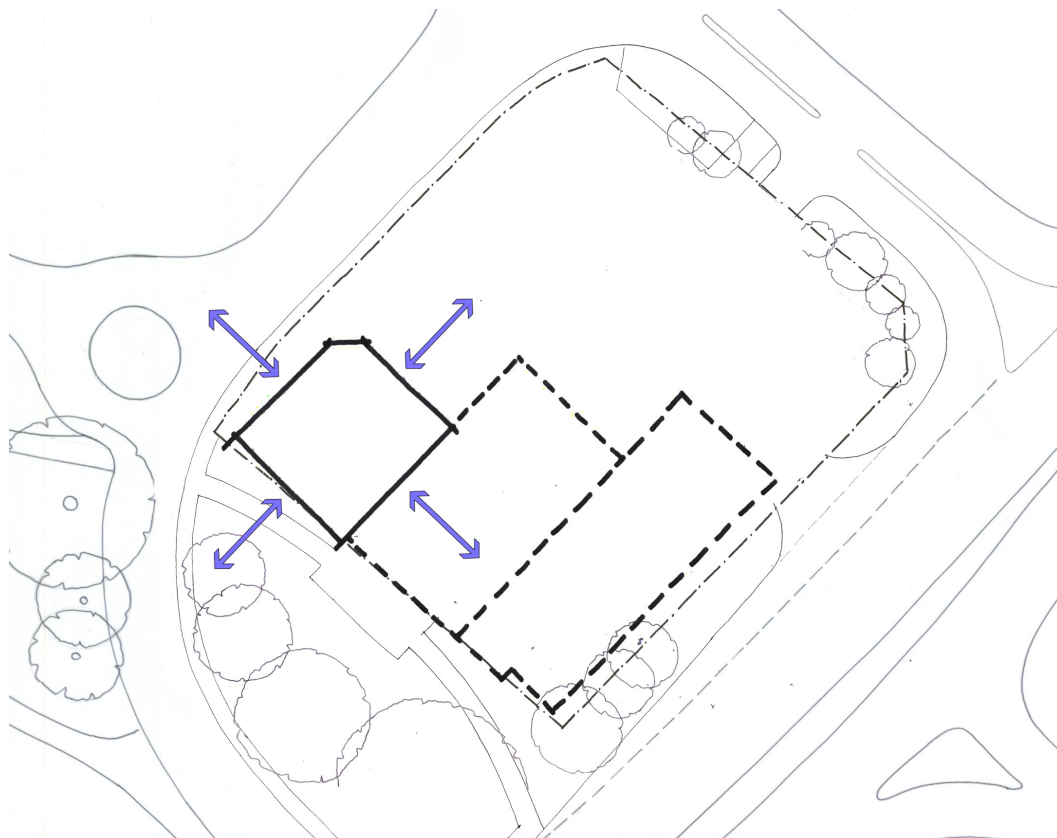


## bridge



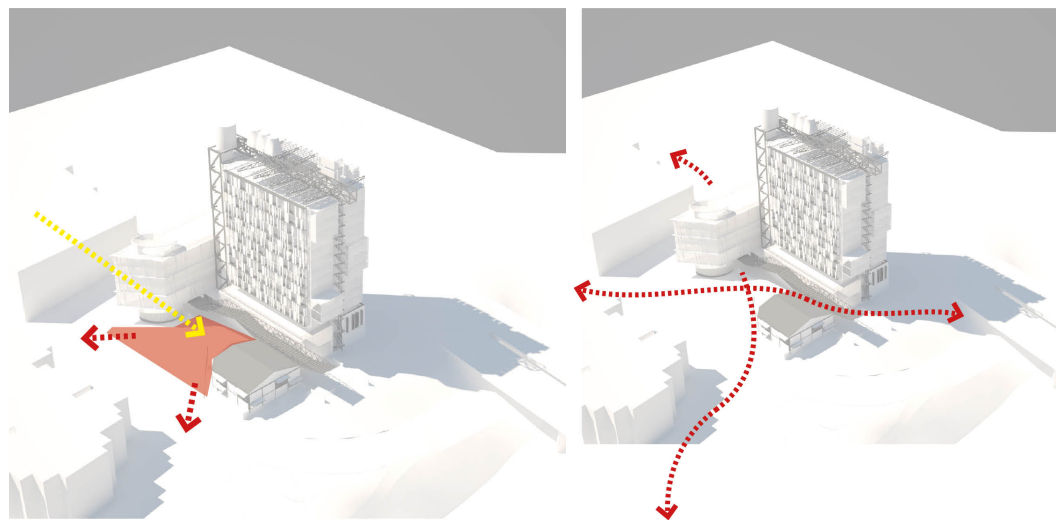
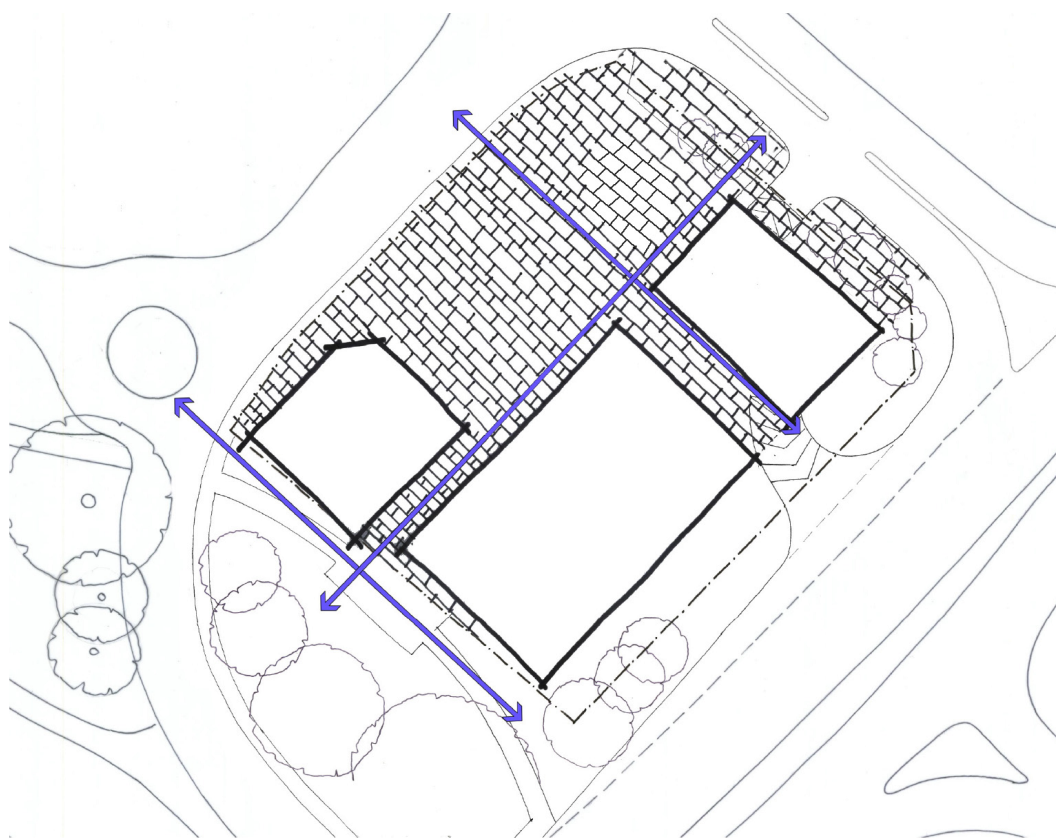
The scheme borrows the honesty, strength and visual clarity of the Ryde Bridge's open truss structure to create the circulation and roof elements within the project. The bridge structure informs the design of the project in elements such as the lift tower, roof structure, fire stairs, balcony structures and ground level pedestrian walkway

## shed



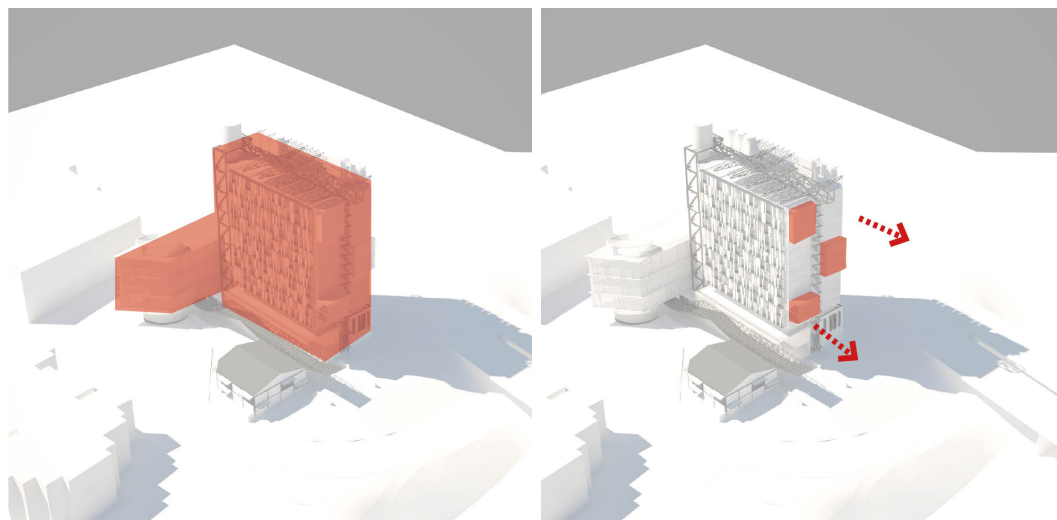
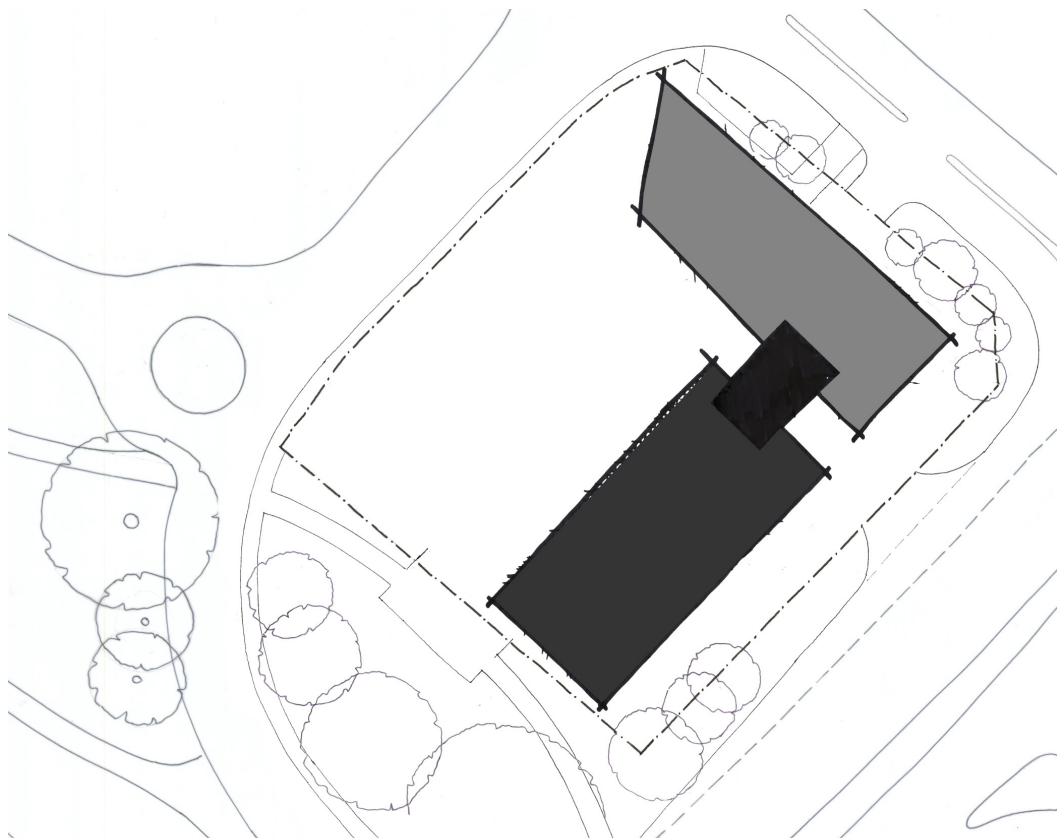
The scheme takes the equally honest and strong industrial sheds currently located on the site and uses them to extend the industrial and structural language established by the bridge to form the character of the development at the ground, whilst referencing the built heritage of the site into the project. The 'Shed' becomes a key signifier and focus for the site connecting it to the public realm.

## plaza



The scheme delivers a 1131m2 public plaza which forms the forecourt and main public 'address' for the development. The plaza connects the site to its surrounds, delivers activity to the commercial space, provides a usable and effective area for communal activities and allows 'breathing space' for the shed and adjoining developments.

## mass



The scheme places two main buildings on the site. Building B, a 15 storey tower, extends along the eastern boundary of the site facing Church Street whilst Building A, a 6 storey building, is located at right angles to it, extends along the northern boundary of the site to address Well Street. These two Buildings frame and define the site. They become the primary structures, protective edges and perimeter walls for the site. They are double sided, visually thin, highly articulated, clearly defined and strongly layered.

### design analysis

mixed use development @

### 8 parsonage street RYDE



**Holdmark Property Group**  
Suite 2/2-4 Giffnock Ave, Macquarie Park NSW 2113  
p + 61 2 9889 5540 f + 61 2 9888 5829



**COX richardson architects**  
level 6 / 155 clarence street sydney 2038  
p + 61 2 9267 9599 f + 61 2 9264 5844



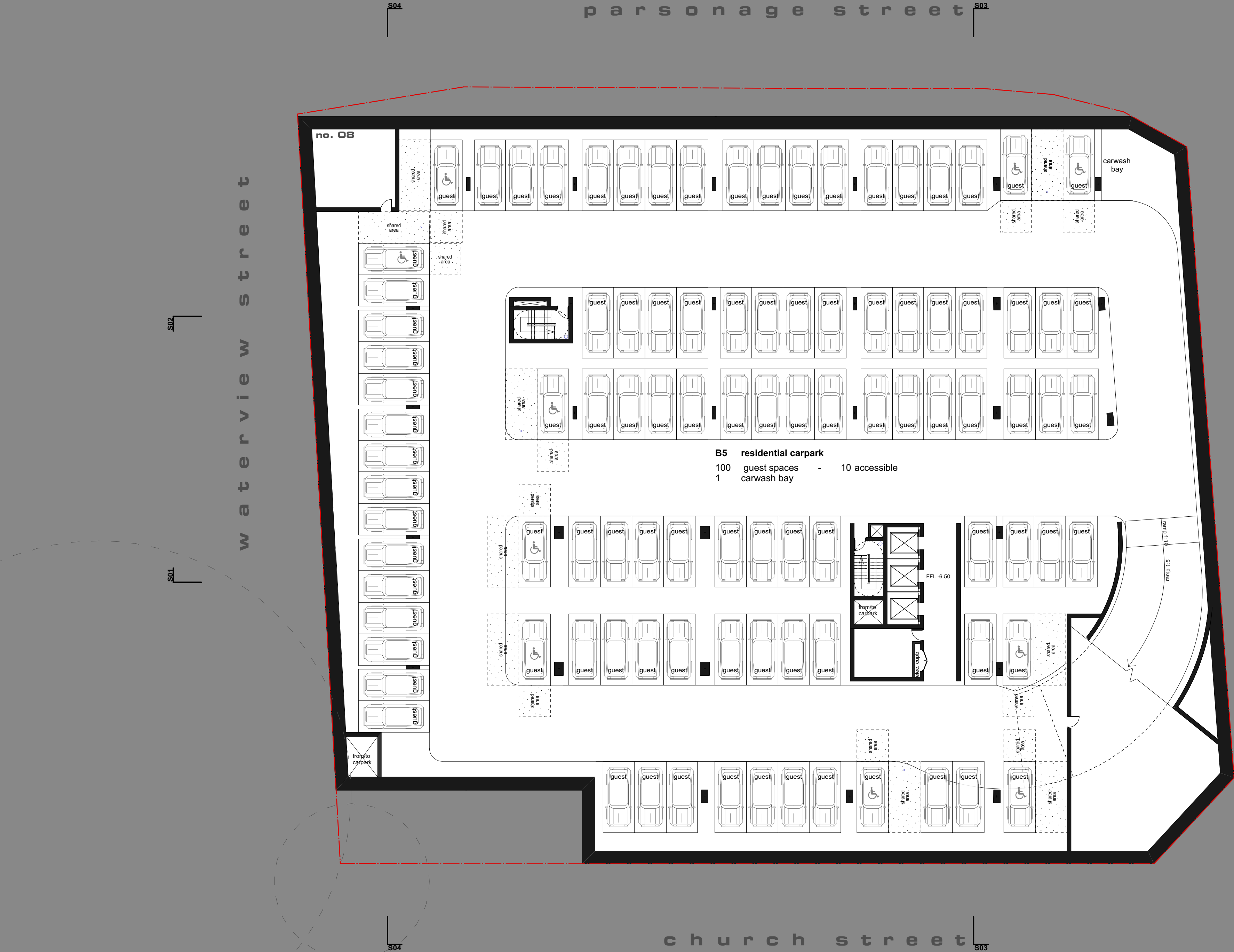
**kennedy associates architects**  
level 3 / 1 booth street annandale 2038  
p + 61 2 9557 6466 f + 61 2 9557 6477

**NOTES:**  
Internal layouts shown are indicative only for information purposes and are subject to further design development and change  
Window mullions, if shown, are indicative only  
Louvre panels, if shown, are indicative only  
All dimensions and levels shown are approximate  
Any finishes nominated are indicative only and are subject to further design development and change  
Articulations shown on the façade are indicative only and are subject to further design development and change  
Storage allocations and areas are not necessarily shown on the drawings and are subject to change

DA 05 C

C 28/11/17 Indicative Development Application Introduction v2016.vwx







S04

S0

S02

S01


502

105

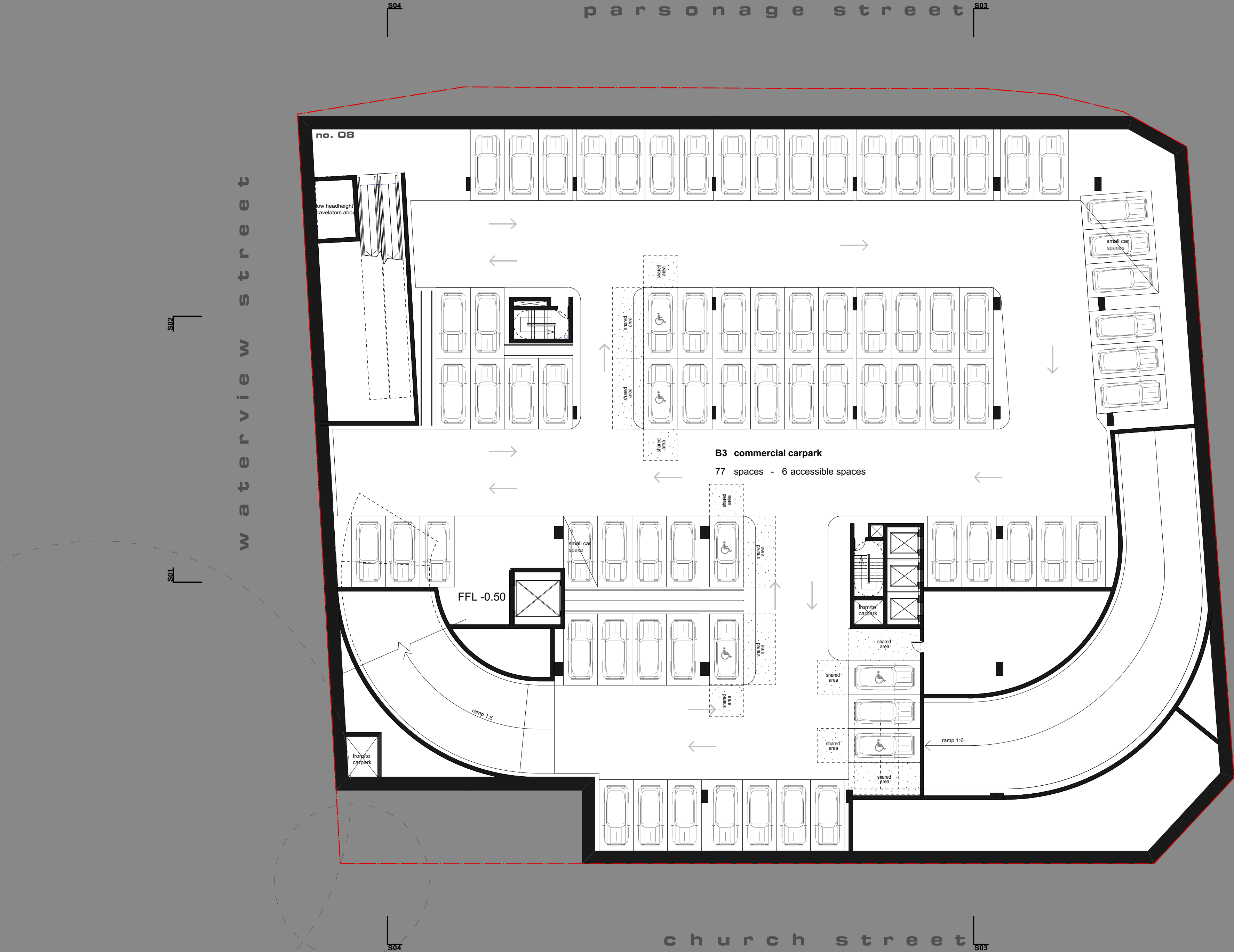
well streets

S04

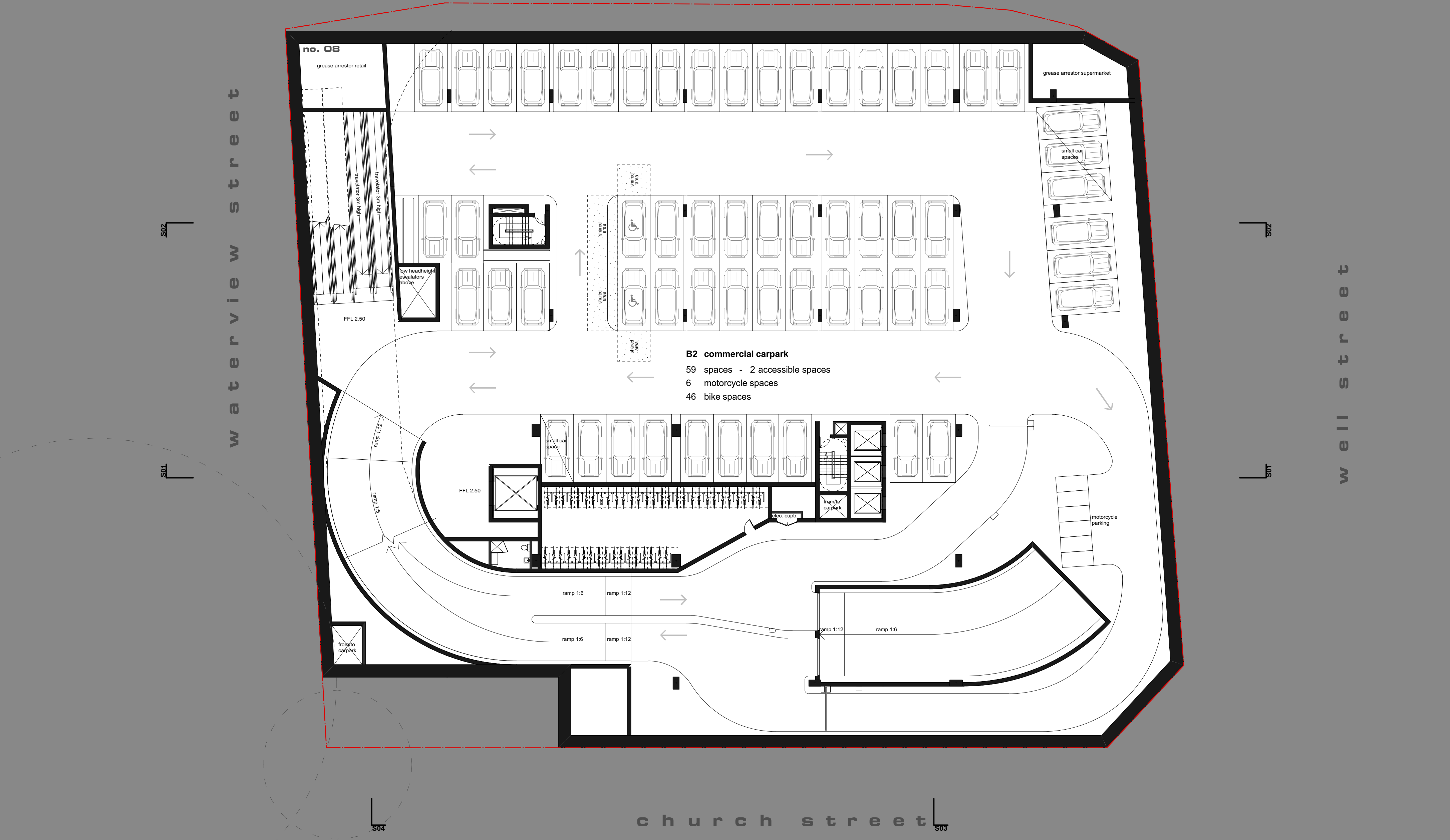
\$0



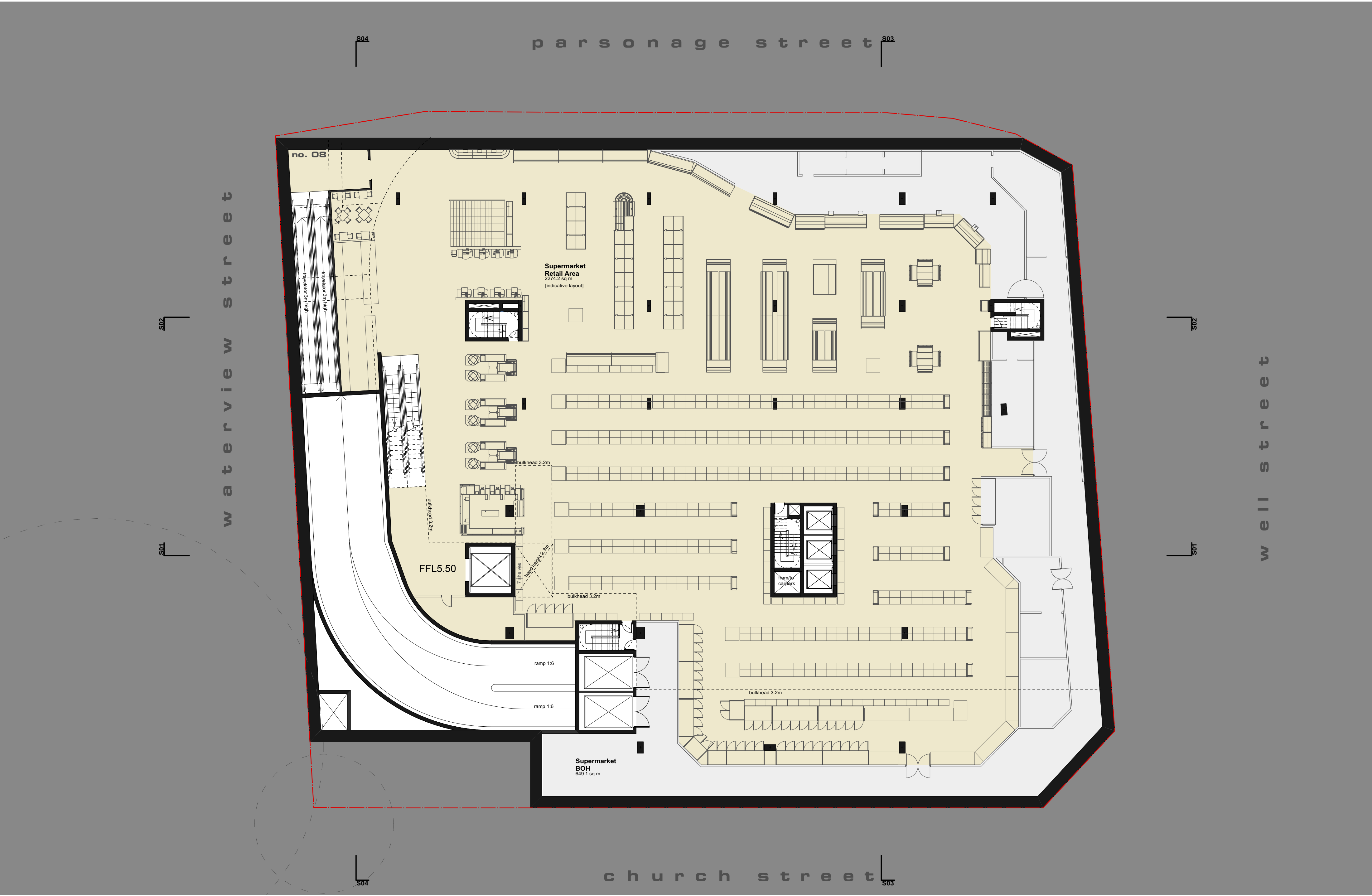












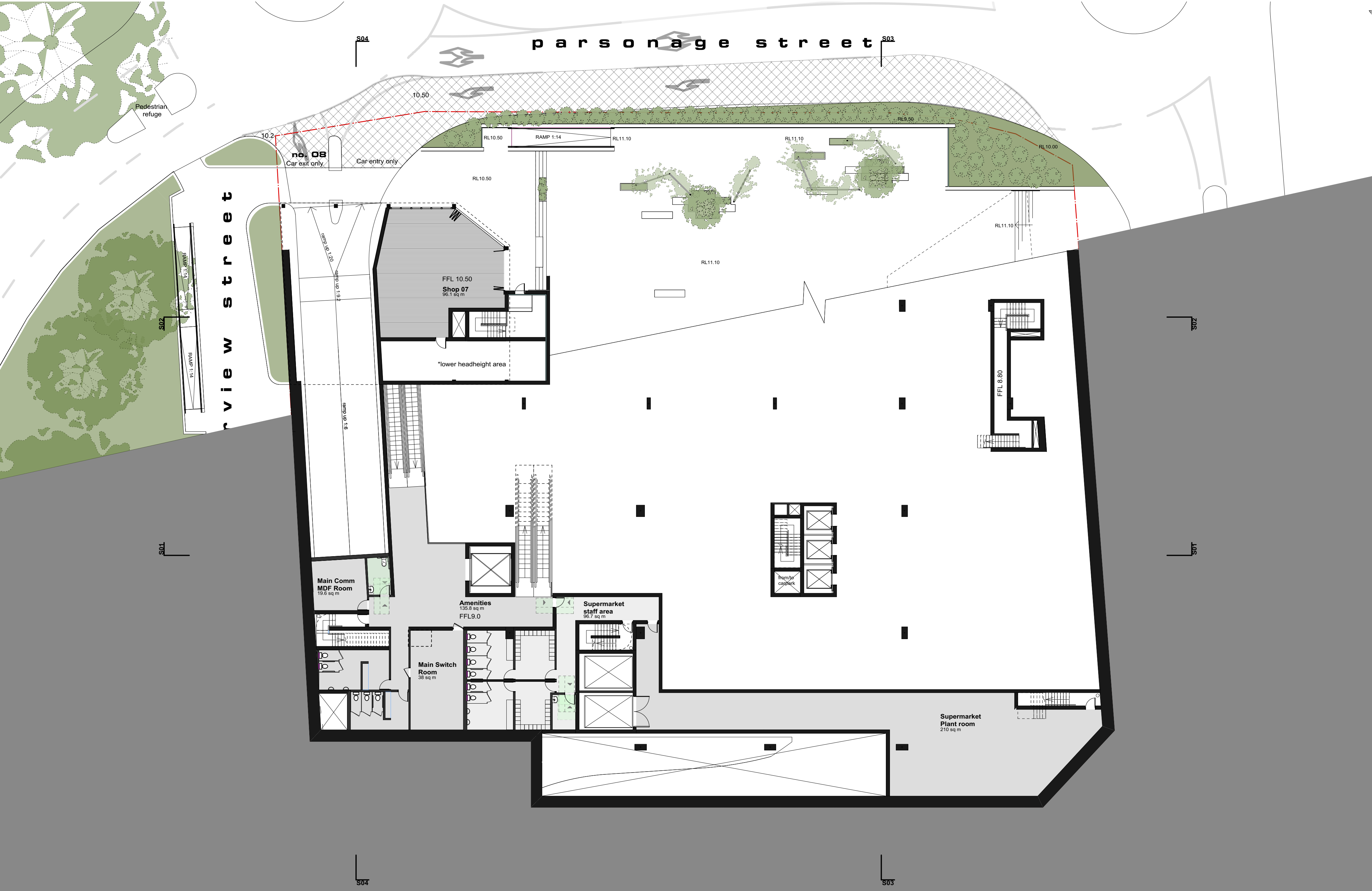
basement 01\_supermarket  
mixed use development @  
8 parsonage street RYDE

**HOLDMARK**  
Holdmark Property Group  
Suite 2/2-4 Giffnock Ave, Macquarie Park NSW 2113  
p + 61 2 9889 5540 f + 61 2 9888 5829

**COX**  
COX richardson architects  
level 6 / 155 clarence street sydney 2038  
p + 61 2 9267 9599 f + 61 2 9264 5844  
**kennedy associates architects**  
level 3 / 1 booth street annandale 2038  
p + 61 2 9557 6466 f + 61 2 9557 6477

**NOTES:**  
Internal layouts shown are indicative only for information purposes and are subject to further design development and change  
Window mullions, if shown, are indicative only  
Louvre panels, if shown, are indicative only  
All dimensions and levels shown are approximate  
Any finishes nominated are indicative only and subject to change  
Articulations shown on the façade are indicative only and are subject to further design development and change  
Storage allocations and areas are not necessarily shown on the drawings and are subject to change

0 2 4 10m  
1.200 @ A2  
DA 11 D  
D 28/11/17 Indicative Development Application



lower ground level  
mixed use development @  
8 parsonage street RYDE

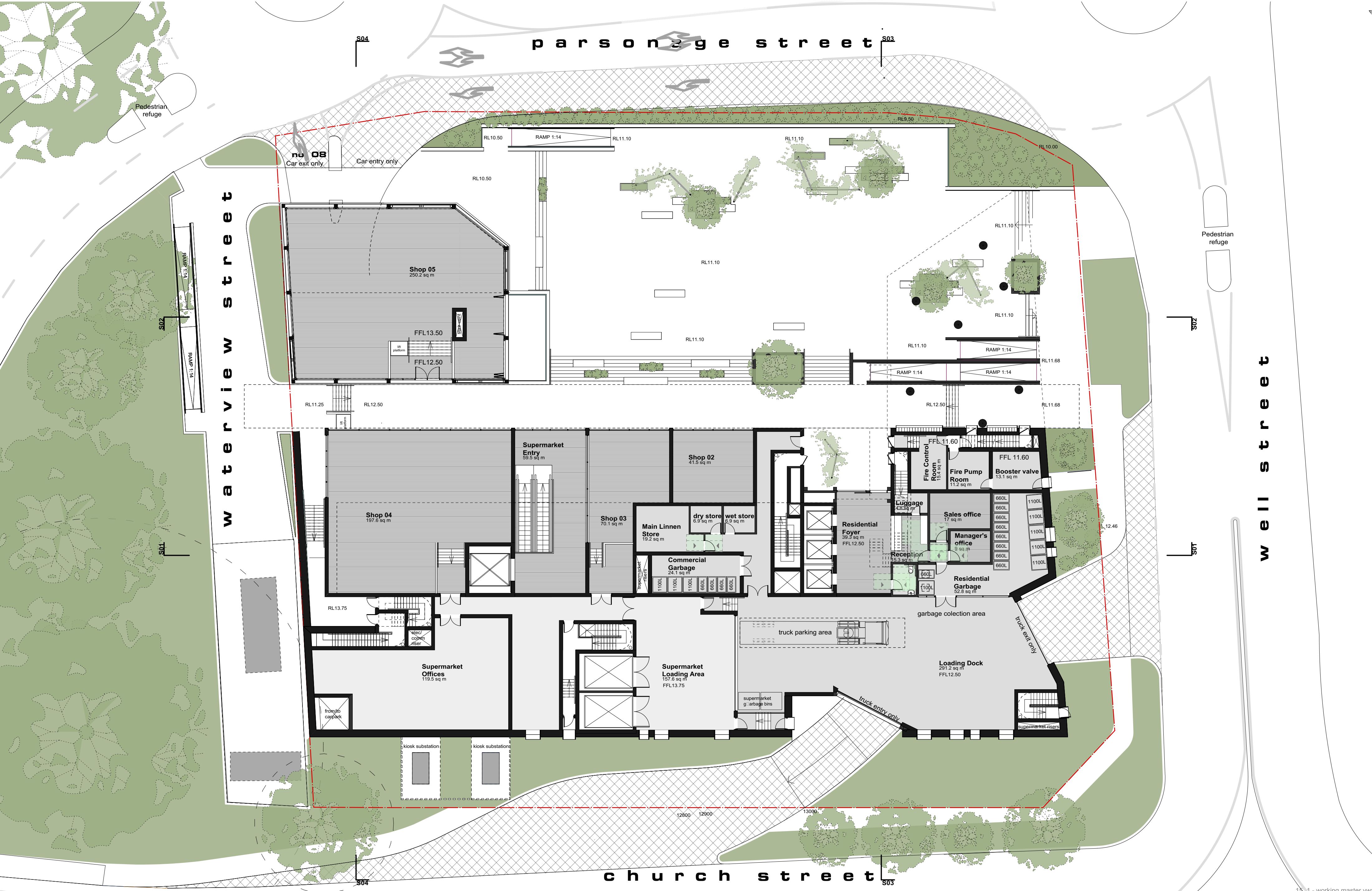
**HOLDMARK**  
Holdmark Property Group  
Suite 2/2-4 Giffnock Ave, Macquarie Park NSW 2113  
p + 61 2 9889 5540 f + 61 2 9888 5829

**COX**  
COX richardson architects  
level 6 / 155 clarence street sydney 2038  
p + 61 2 9267 9599 f + 61 2 9264 5844  
**kennedy associates architects**  
level 3 / 1 booth street annandale 2038  
p + 61 2 9557 6466 f + 61 2 9557 6477

**NOTES:**  
Internal layouts shown are indicative only for information purposes and are subject to further design development and change  
Window mullions, if shown, are indicative only  
Louvre panels, if shown, are indicative only  
All dimensions and levels shown are approximate  
Any finishes nominated are indicative only and subject to change  
Articulations shown on the façade are indicative only and are subject to further design development and change  
Storage allocations and areas are not necessarily shown on the drawings and are subject to change

0 2 4 10m  
1.200 @ A2  
**DA 12 D**  
D 28/11/17 Indicative Development Application









level 01  
mixed use development @  
8 parsonage street RYDE

**HOLDMARK**  
Holdmark Property Group  
Suite 2/2-4 Giffnock Ave, Macquarie Park NSW 2113  
p + 61 2 9889 5540 f + 61 2 9888 5829

**COX**  
COX richardson architects  
level 6 / 155 clarence street sydney 2038  
p + 61 2 9267 9599 f + 61 2 9264 5844  
**kennedy associates architects**  
level 3 / 1 booth street annandale 2038  
p + 61 2 9557 6466 f + 61 2 9557 6477

**NOTES:**  
Internal layouts shown are indicative only for information purposes and are subject to further design development and change  
Window mullions, if shown, are indicative only  
Louvre panels, if shown, are indicative only  
All dimensions and levels shown are approximate  
Any finishes nominated are indicative only and subject to change  
Articulations shown on the façade are indicative only and are subject to further design development and change  
Storage allocations and areas are not necessarily shown on the drawings and are subject to change

0 2 4 10m  
1.200 @ A2  
DA 14 D  
D 28/11/17 Indicative Development Application





level 02  
mixed use development @  
8 parsonage street RYDE

**HOLDMARK**  
Holdmark Property Group  
Suite 2/2-4 Giffnock Ave, Macquarie Park NSW 2113  
p + 61 2 9889 5540 f + 61 2 9888 5829

**COX**  
COX richardson architects  
level 6 / 155 clarence street sydney 2038  
p + 61 2 9267 9599 f + 61 2 9264 5844  
**kennedy associates architects**  
level 3 / 1 booth street annandale 2038  
p + 61 2 9557 6466 f + 61 2 9557 6477

**NOTES:**  
Internal layouts shown are indicative only for information purposes and are subject to further design development and change  
Window mullions, if shown, are indicative only  
Louvre panels, if shown, are indicative only  
All dimensions and levels shown are approximate  
Any finishes nominated are indicative only and subject to change  
Articulations shown on the façade are indicative only and are subject to further design development and change  
Storage allocations and areas are not necessarily shown on the drawings and are subject to change

0 2 4 10m  
1.200 @ A2  
DA 15 D  
D 28/11/17 Indicative Development Application



level 03  
mixed use development @  
8 parsonage street RYDE

**HOLDMARK**  
Holdmark Property Group  
Suite 2/2-4 Giffnock Ave, Macquarie Park NSW 2113  
p + 61 2 9889 5540 f + 61 2 9888 5829

**COX**  
COX richardson architects  
level 6 / 155 clarence street sydney 2038  
p + 61 2 9267 9599 f + 61 2 9264 5844  
**KENNEDY ASSOCIATES**  
kennedy associates architects  
level 3 / 1 booth street annandale 2038  
p + 61 2 9557 6466 f + 61 2 9557 6477

**NOTES:**  
Internal layouts shown are indicative only for information purposes and are subject to further design development and change  
Window mullions, if shown, are indicative only  
Louvre panels, if shown, are indicative only  
All dimensions and levels shown are approximate  
Any finishes nominated are indicative only and subject to change  
Articulations shown on the façade are indicative only and are subject to further design development and change  
Storage allocations and areas are not necessarily shown on the drawings and are subject to change

0 2 4 10m  
1.200 @ A2  
DA 16 D  
D 28/11/17 Indicative Development Application







level 05  
mixed use development @  
8 parsonage street RYDE

**HOLDMARK**  
Holdmark Property Group  
Suite 2/2-4 Giffnock Ave, Macquarie Park NSW 2113  
p + 61 2 9889 5540 f + 61 2 9888 5829

**COX**  
COX richardson architects  
level 6 / 155 clarence street sydney 2038  
p + 61 2 9267 9599 f + 61 2 9264 5844  
**KENNEDY ASSOCIATES**  
kennedy associates architects  
level 3 / 1 booth street annandale 2038  
p + 61 2 9557 6466 f + 61 2 9557 6477

**NOTES:**  
Internal layouts shown are indicative only for information purposes and are subject to further design development and change  
Window mullions, if shown, are indicative only  
Louvre panels, if shown, are indicative only  
All dimensions and levels shown are approximate  
Any finishes nominated are indicative only and subject to change  
Articulations shown on the façade are indicative only and are subject to further design development and change  
Storage allocations and areas are not necessarily shown on the drawings and are subject to change

0 2 4 10m  
1.200 @ A2  
DA 18 D  
D 28/11/17 Indicative Development Application

1531 - working master.vwx





level 06  
mixed use development @  
8 parsonage street RYDE

**HOLDMARK**  
Holdmark Property Group  
Suite 2/2-4 Giffnock Ave, Macquarie Park NSW 2113  
p + 61 2 9889 5540 f + 61 2 9888 5829

**COX**  
COX richardson architects  
level 6 / 155 clarence street sydney 2038  
p + 61 2 9267 9599 f + 61 2 9264 5844  
**KENNEDY ASSOCIATES**  
kennedy associates architects  
level 3 / 1 booth street annandale 2038  
p + 61 2 9557 6466 f + 61 2 9557 6477

**NOTES:**  
Internal layouts shown are indicative only for information purposes and are subject to further design development and change  
Window mullions, if shown, are indicative only  
Louvre panels, if shown, are indicative only  
All dimensions and levels shown are approximate  
Any finishes nominated are indicative only and subject to change  
Articulations shown on the façade are indicative only and are subject to further design development and change  
Storage allocations and areas are not necessarily shown on the drawings and are subject to change

0 2 4 10m  
1.200 @ A2  
DA 19 D  
D 28/11/17 Indicative Development Application



level 07  
mixed use development @  
8 parsonage street RYDE

**HOLDMARK**  
Holdmark Property Group  
Suite 2/2-4 Giffnock Ave, Macquarie Park NSW 2113  
p + 61 2 9889 5540 f + 61 2 9888 5829

**COX**  
COX richardson architects  
level 6 / 155 clarence street sydney 2038  
p + 61 2 9267 9599 f + 61 2 9264 5844  
**KENNEDY ASSOCIATES**  
kennedy associates architects  
level 3 / 1 booth street annandale 2038  
p + 61 2 9557 6466 f + 61 2 9557 6477

**NOTES:**  
Internal layouts shown are indicative only for information purposes and are subject to further design development and change  
Window mullions, if shown, are indicative only  
Louvre panels, if shown, are indicative only  
All dimensions and levels shown are approximate  
Any finishes nominated are indicative only and subject to change  
Articulations shown on the façade are indicative only and are subject to further design development and change  
Storage allocations and areas are not necessarily shown on the drawings and are subject to change

0 2 4 10m  
1.200 @ A2  
DA 20 D  
D 28/11/17 Indicative Development Application

1531 - working master.vwx





levels 08  
mixed use development @  
8 parsonage street RYDE

**HOLDMARK**  
Holdmark Property Group  
Suite 2/2-4 Giffnock Ave, Macquarie Park NSW 2113  
p + 61 2 9889 5540 f + 61 2 9888 5829

**COX**  
COX richardson architects  
level 6 / 155 clarence street sydney 2038  
p + 61 2 9267 9599 f + 61 2 9264 5844  
**KENNEDY ASSOCIATES**  
kennedy associates architects  
level 3 / 1 booth street annandale 2038  
p + 61 2 9557 6466 f + 61 2 9557 6477

**NOTES:**  
Internal layouts shown are indicative only for information purposes and are subject to further design development and change  
Window mullions, if shown, are indicative only  
Louvre panels, if shown, are indicative only  
All dimensions and levels shown are approximate  
Any finishes nominated are indicative only and subject to change  
Articulations shown on the façade are indicative only and are subject to further design development and change  
Storage allocations and areas are not necessarily shown on the drawings and are subject to change







levels 14  
mixed use development @  
8 parsonage street RYDE

**HOLDMARK**  
Holdmark Property Group  
Suite 2/2-4 Giffnock Ave, Macquarie Park NSW 2113  
p + 61 2 9889 5540 f + 61 2 9888 5829

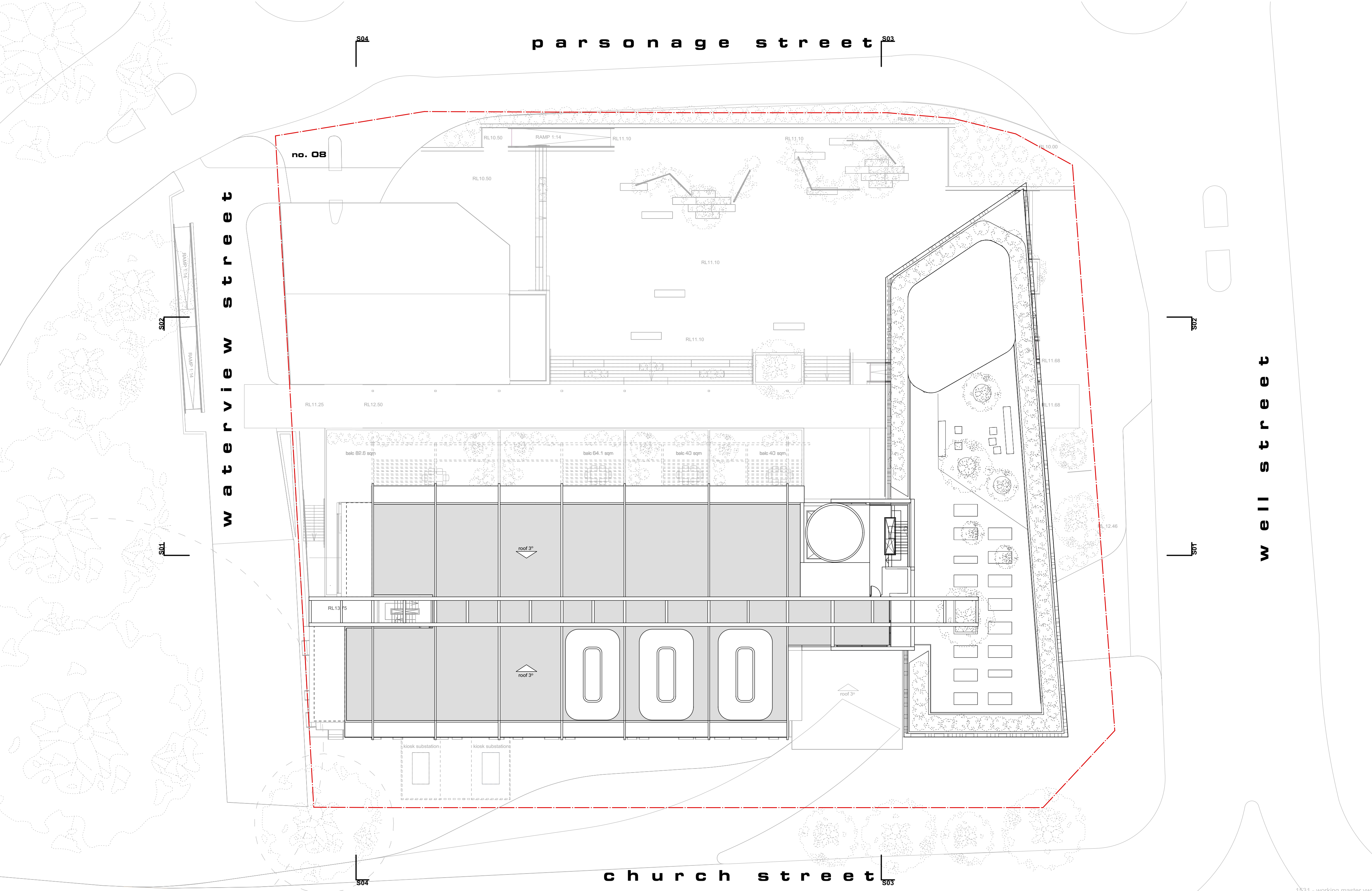
**COX**  
COX richardson architects  
level 6 / 155 clarence street sydney 2038  
p + 61 2 9267 9599 f + 61 2 9264 5844  
**Kennedy associates architects**  
level 3 / 1 booth street annandale 2038  
p + 61 2 9557 6466 f + 61 2 9557 6477

**NOTES:**  
Internal layouts shown are indicative only for information purposes and are subject to further design development and change  
Window mullions, if shown, are indicative only  
Louvre panels, if shown, are indicative only  
All dimensions and levels shown are approximate  
Any finishes nominated are indicative only and subject to change  
Articulations shown on the façade are indicative only and are subject to further design development and change  
Storage allocations and areas are not necessarily shown on the drawings and are subject to change

0 2 4 10m  
1.200 @ A2  
DA 23 D

D 28/11/17 Indicative Development Application

1531 - working master.vwx



roof  
mixed use development @  
8 parsonage street RYDE

**HOLDMARK**  
Holdmark Property Group  
Suite 2/2-4 Giffnock Ave, Macquarie Park NSW 2113  
p + 61 2 9889 5540 f + 61 2 9888 5829

**COX**  
COX richardson architects  
level 6 / 155 clarence street sydney 2038  
p + 61 2 9267 9599 f + 61 2 9264 5844  
**KENNEDY ASSOCIATES**  
kennedy associates architects  
level 3 / 1 booth street annandale 2038  
p + 61 2 9557 6466 f + 61 2 9557 6477

**NOTES:**  
Internal layouts shown are indicative only for information purposes and are subject to further design development and change  
Window mullions, if shown, are indicative only  
Louvre panels, if shown, are indicative only  
All dimensions and levels shown are approximate  
Any finishes nominated are indicative only and subject to change  
Articulations shown on the façade are indicative only and are subject to further design development and change  
Storage allocations and areas are not necessarily shown on the drawings and are subject to change

0 2 4 10m  
1.200 @ A2  
DA 24 D  
D 28/11/17 Indicative Development Application





1531 - DA elevations v2016.vwx

church street elevation

mixed use development @

8 parsonage street RYDE



**Holdmark Property Group**  
Suite 2/2-4 Giffnock Ave, Macquarie Park NSW 2113  
p + 61 2 9889 5540 f + 61 2 9888 5829



**COX richardson architects**  
level 6 / 155 clarence street sydney 2038  
p + 61 2 9267 9599 f + 61 2 9264 5844

**kennedy associates architects**  
level 3 / 1 booth street annandale 2038  
p + 61 2 9557 6466 f + 61 2 9557 6477

**NOTES:**  
Internal layouts shown are indicative only for information purposes and are subject to further design development and change  
Window mullions, if shown, are indicative only  
Louvre panels, if shown, are indicative only  
All dimensions and levels shown are approximate  
Any finishes nominated are indicative only and are subject to further design development and change  
Storage allocations and areas are not necessarily shown on the drawings and are subject to change

DA 25 D

D 28/11/17 Indicative Development Application





well street elevation

mixed use development @

8 parsonage street RYDE



**Holdmark Property Group**  
Suite 2/2-4 Giffnock Ave, Macquarie Park NSW 2113  
p + 61 2 9889 5540 f + 61 2 9888 5829



**COX richardson architects**  
level 6 / 155 clarence street sydney 2038  
p + 61 2 9267 9599 f + 61 2 9264 5844

**kennedy associates architects**  
level 3 / 1 booth street annandale 2038  
p + 61 2 9557 6466 f + 61 2 9557 6477

**NOTES:**  
Internal layouts shown are indicative only for information purposes and are subject to further design development and change  
Window mullions, if shown, are indicative only  
Louvre panels, if shown, are indicative only  
All dimensions and levels shown are approximate  
Any finishes nominated are indicative only and subject to change  
Articulations shown on the façade are indicative only and are subject to further design development and change  
Storage allocations and areas are not necessarily shown on the drawings and are subject to change

DA 26 D

D 28/11/17 Indicative Development Application





1531 - DA elevations v2016.vwx

parsonage street elevation

mixed use development @

8 parsonage street RYDE

**HOLDMARK**

Holdmark Property Group  
Suite 2/2-4 Giffnock Ave, Macquarie Park NSW 2113  
p + 61 2 9889 5540 f + 61 2 9888 5829

**COX**

**KENNEDY ASSOCIATES**

COX richardson architects  
level 6 / 155 clarence street sydney 2038  
p + 61 2 9267 9599 f + 61 2 9264 5844

kennedy associates architects  
level 3 / 1 booth street annandale 2038  
p + 61 2 9557 6466 f + 61 2 9557 6477

**NOTES:**  
Internal layouts shown are indicative only for information purposes and are subject to further design development and change  
Window mullions, if shown, are indicative only  
Louvre panels, if shown, are indicative only  
All dimensions and levels shown are approximate  
Any finishes nominated are indicative only and are subject to further design development and change  
Articulations shown on the façade are indicative only and are subject to further design development and change  
Storage allocations and areas are not necessarily shown on the drawings and are subject to change

DA 27 D

D 28/11/17 Indicative Development Application





1531 - DA elevations v2016.vwx

the loop road elevation

mixed use development @

8 parsonage street RYDE



**Holdmark Property Group**  
Suite 2/2-4 Giffnock Ave, Macquarie Park NSW 2113  
p + 61 2 9889 5540 f + 61 2 9888 5829



**COX richardson architects**  
level 6 / 155 clarence street sydney 2038  
p + 61 2 9267 9599 f + 61 2 9264 5844



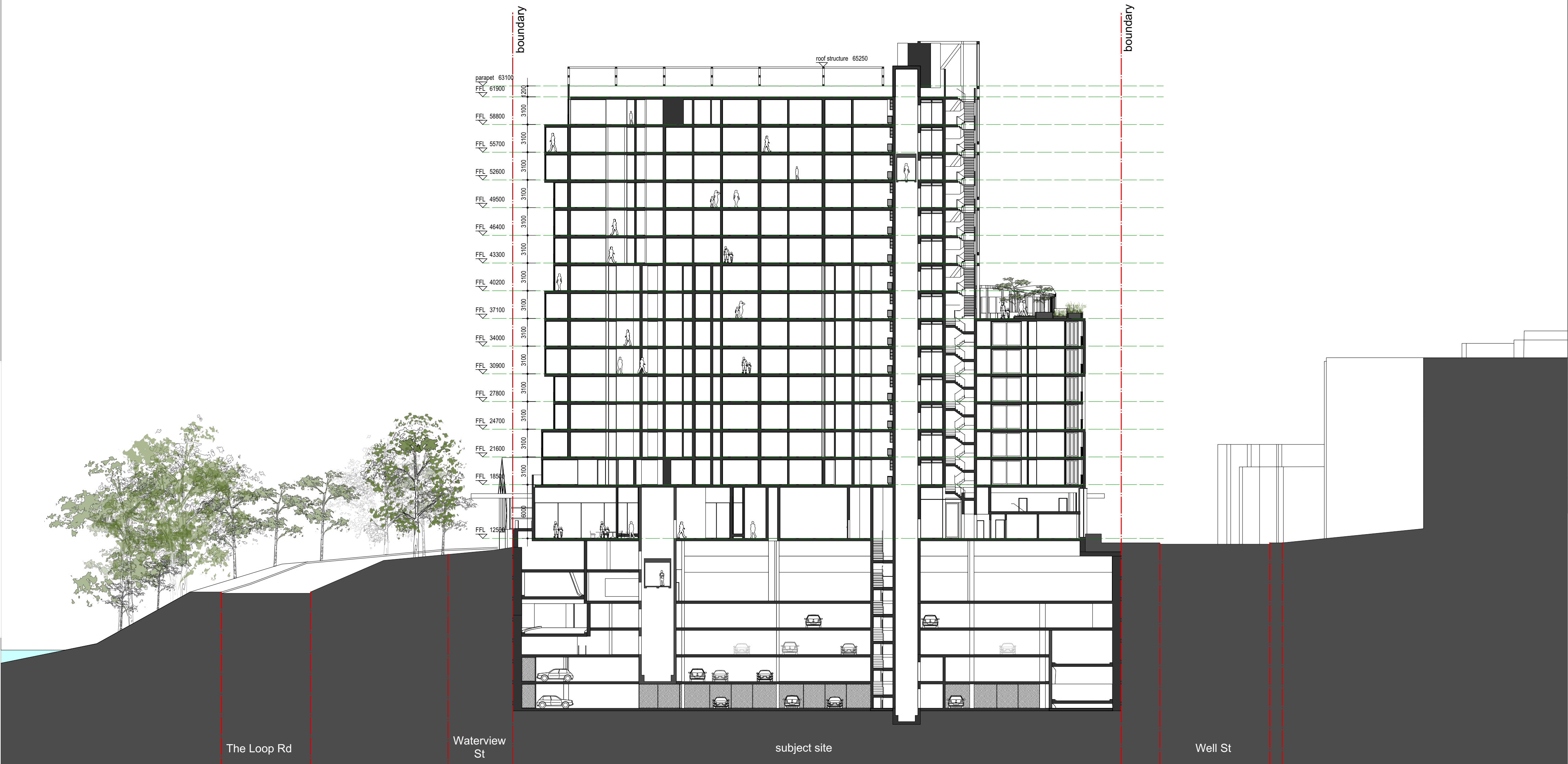
**kennedy associates architects**  
level 3 / 1 booth street annandale 2038  
p + 61 2 9557 6466 f + 61 2 9557 6477

**NOTES:**  
Internal layouts shown are indicative only for information purposes and are subject to further design development and change  
Window mullions, if shown, are indicative only  
Louvre panels, if shown, are indicative only  
All dimensions and levels shown are approximate  
Any finishes nominated are indicative only and subject to change  
Articulations shown on the façade are indicative only and are subject to further design development and change  
Storage allocations and areas are not necessarily shown on the drawings and are subject to change

DA 28 D

D 28/11/17 Indicative Development Application





1531 - DA sections v2016.vwx

long section\_building

mixed use development @

8 parsonage street RYDE



**Holdmark Property Group**  
Suite 2/2-4 Giffnock Ave, Macquarie Park NSW 2113  
p + 61 2 9889 5540 f + 61 2 9888 5829



**COX richardson architects**  
level 6 / 155 clarence street sydney 2038  
p + 61 2 9267 9599 f + 61 2 9264 5844

**kennedy associates architects**  
level 3 / 1 booth street annandale 2038  
p + 61 2 9557 6466 f + 61 2 9557 6477

**NOTES:**  
Internal layouts shown are indicative only for information purposes and are subject to further design development and change  
Window mullions, if shown, are indicative only  
Louvre panels, if shown, are indicative only  
All dimensions and levels shown are approximate  
Any finishes nominated are indicative only and subject to change  
Articulations shown on the façade are indicative only and are subject to further design development and change  
Storage allocations and areas are not necessarily shown on the drawings and are subject to change

DA 29 D

D 28/11/17 Indicative Development Application



1531 - DA sections v2016.vwx

long section\_plaza

mixed use development @

8 parsonage street RYDE



**Holdmark Property Group**  
Suite 2/2-4 Giffnock Ave, Macquarie Park NSW 2113  
p + 61 2 9889 5540 f + 61 2 9888 5829



**COX richardson architects**  
level 6 / 155 clarence street sydney 2038  
p + 61 2 9267 9599 f + 61 2 9264 5844

**kennedy associates architects**  
level 3 / 1 booth street annandale 2038  
p + 61 2 9557 6466 f + 61 2 9557 6477

**NOTES:**  
Internal layouts shown are indicative only for information purposes and are subject to further design development and change  
Window mullions, if shown, are indicative only  
Louvre panels, if shown, are indicative only  
All dimensions and levels shown are approximate  
Any finishes nominated are indicative only and are subject to change  
Articulations shown on the façade are indicative only and are subject to further design development and change  
Storage allocations and areas are not necessarily shown on the drawings and are subject to change

1531 - DA sections v2016.vwx

DA 30 D

D 28/11/17 Indicative Development Application





cross section\_ramp

mixed use development @

8 parsonage street RYDE

**HOLDMARK**

Holdmark Property Group  
Suite 2/2-4 Giffnock Ave, Macquarie Park NSW 2113  
p + 61 2 9889 5540 f + 61 2 9888 5829

**COX**

COX richardson architects  
level 6 / 155 clarence street sydney 2038  
p + 61 2 9267 9599 f + 61 2 9264 5844

**KENNEDY ASSOCIATES**

kennedy associates architects  
level 3 / 1 booth street annandale 2038  
p + 61 2 9557 6466 f + 61 2 9557 6477

**NOTES:**  
Internal layouts shown are indicative only for information purposes and are subject to further design development and change  
Window mullions, if shown, are indicative only  
Louvre panels, if shown, are indicative only  
All dimensions and levels shown are approximate  
Any finishes nominated are indicative only and subject to change  
Articulations shown on the façade are indicative only and are subject to further design development and change  
Storage allocations and areas are not necessarily shown on the drawings and are subject to change

DA 31 D

D 28/11/17 Indicative Development Application



cross section  
mixed use development @  
8 parsonage street RYDE

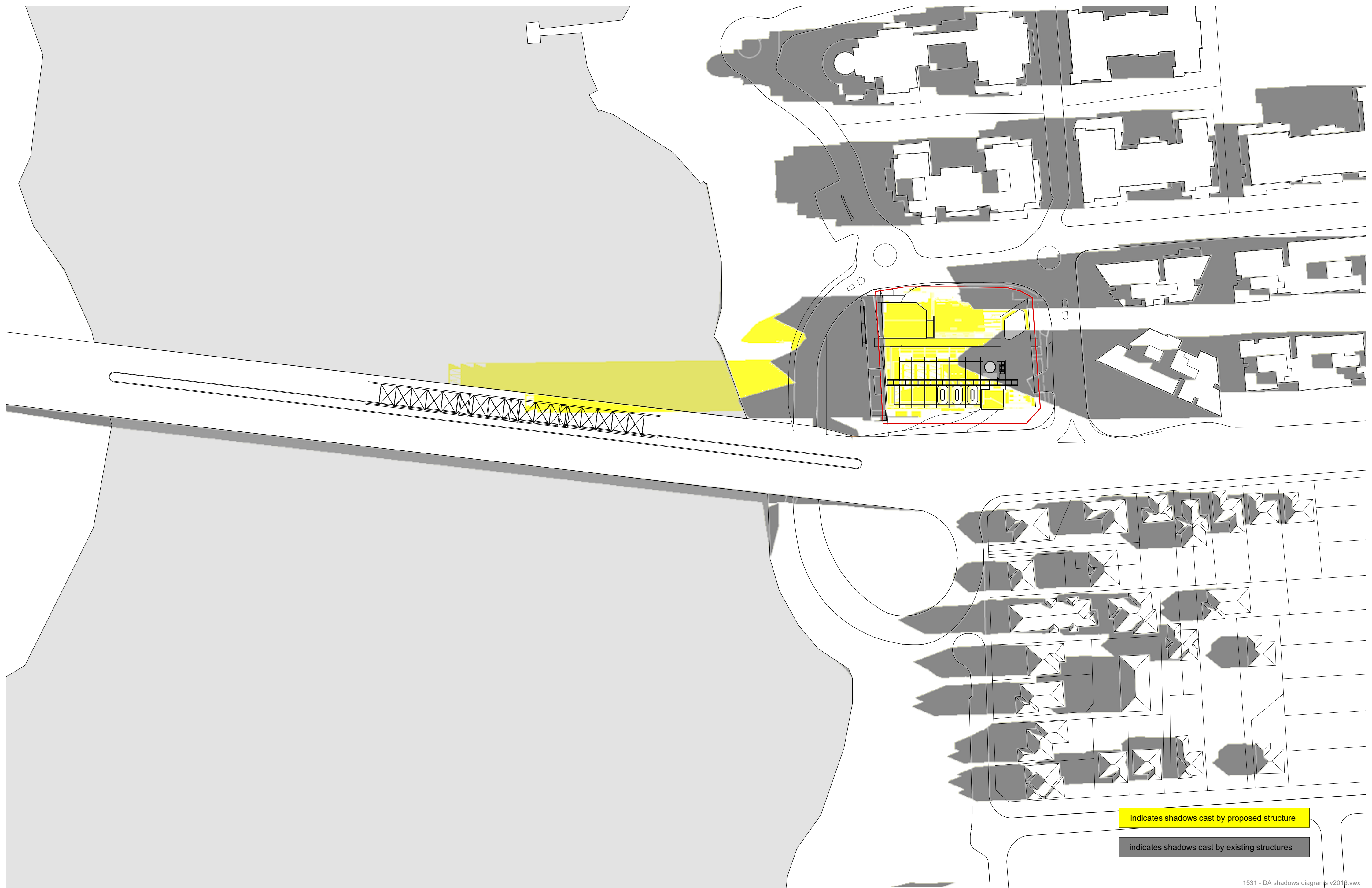
**HOLDMARK**  
Holdmark Property Group  
Suite 2/2-4 Giffnock Ave, Macquarie Park NSW 2113  
p + 61 2 9889 5540 f + 61 2 9888 5829

**COX**  
COX richardson architects  
level 6 / 155 clarence street sydney 2038  
p + 61 2 9267 9599 f + 61 2 9264 5844  
**kennedy associates architects**  
level 3 / 1 booth street annandale 2038  
p + 61 2 9557 6466 f + 61 2 9557 6477

**NOTES:**  
Internal layouts shown are indicative only for information purposes and are subject to further design development and change  
Window mullions, if shown, are indicative only  
Louvre panels, if shown, are indicative only  
All dimensions and levels shown are approximate  
Any finishes nominated are indicative only and are subject to further design development and change  
Articulations shown on the façade are indicative only and are subject to further design development and change  
Storage allocations and areas are not necessarily shown on the drawings and are subject to change

DA 32 D  
D 28/11/17 Indicative Development Application





1531 - DA shadows diagrams v2016.vwx

shadow diagrams\_21st of june 9 am  
mixed use development @

8 parsonage street RYDE



**Holdmark Property Group**  
Suite 2/2-4 Giffnock Ave, Macquarie Park NSW 2113  
p + 61 2 9889 5540 f + 61 2 9888 5829



**COX richardson architects**  
level 6 / 155 clarence street sydney 2038  
p + 61 2 9267 9599 f + 61 2 9264 5844

**kennedy associates architects**  
level 3 / 1 booth street annandale 2038  
p + 61 2 9557 6466 f + 61 2 9557 6477

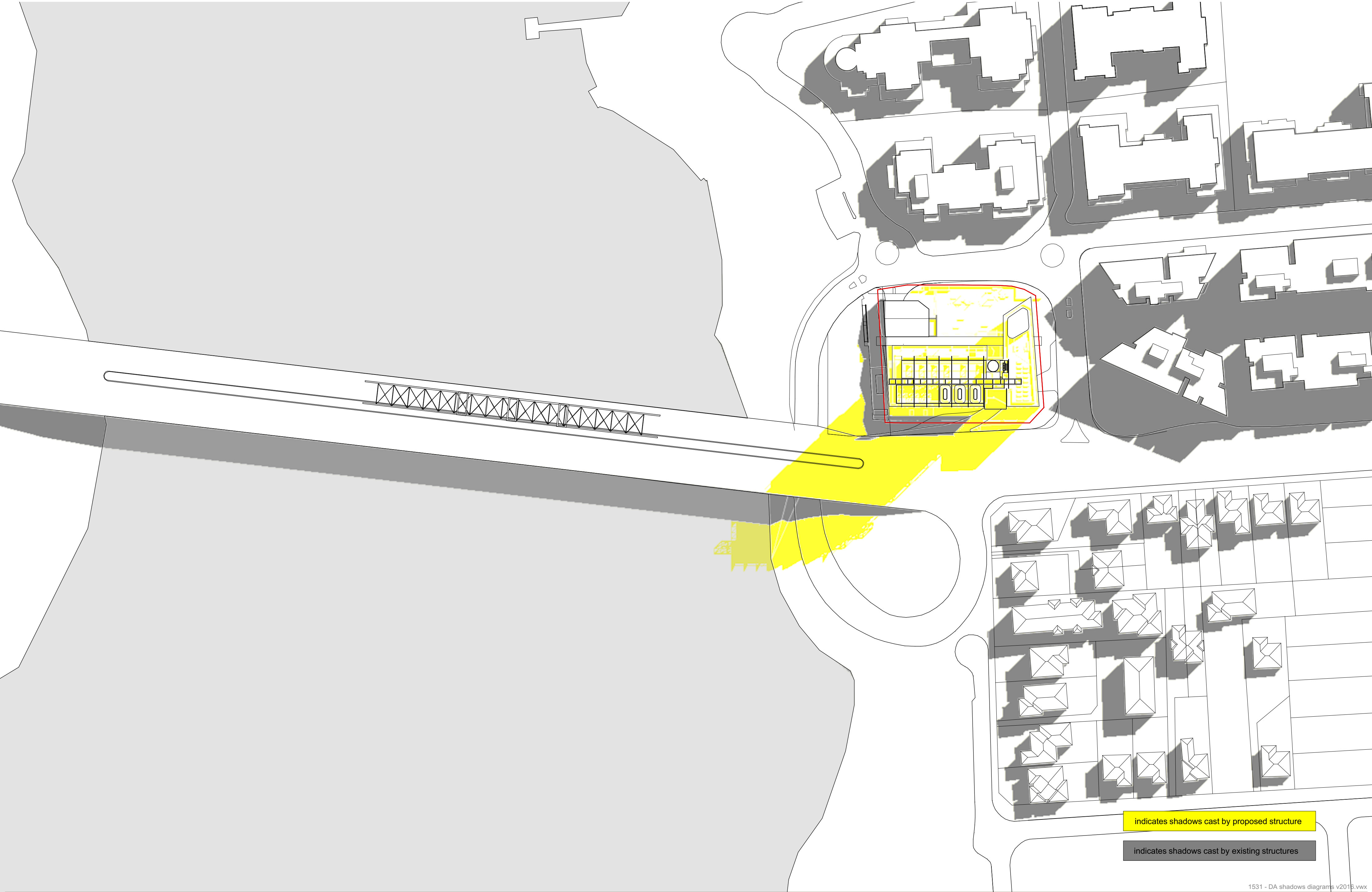
**NOTES:**  
Internal layouts shown are indicative only for information purposes and are subject to further design development and change  
Window mullions, if shown, are indicative only  
Louvre panels, if shown, are indicative only  
All dimensions and levels shown are approximate  
Any finishes nominated are indicative only and subject to change  
Articulations shown on the façade are indicative only and are subject to further design development and change  
Storage allocations and areas are not necessarily shown on the drawings and are subject to change

indicates shadows cast by proposed structure

indicates shadows cast by existing structures

DA 39 C

C 28/11/17 Indicative Development Application



1531 - DA shadows diagrams v2016.vwx

shadow diagrams\_21st of june 12 pm

mixed use development @

8 parsonage street RYDE

**HOLDMARK**

Holdmark Property Group  
Suite 2/2-4 Giffnock Ave, Macquarie Park NSW 2113  
p + 61 2 9889 5540 f + 61 2 9888 5829

**COX**

**KENNEDY ASSOCIATES**

**COX richardson architects**  
level 6 / 155 clarence street sydney 2038  
p + 61 2 9267 9599 f + 61 2 9264 5844

**kennedy associates architects**  
level 3 / 1 booth street annandale 2038  
p + 61 2 9557 6466 f + 61 2 9557 6477

**NOTES:**  
Internal layouts shown are indicative only for information purposes and are subject to further design development and change  
Window mullions, if shown, are indicative only  
Louvre panels, if shown, are indicative only  
All dimensions and levels shown are approximate  
Any finishes nominated are indicative only and subject to change  
Articulations shown on the façade are indicative only and are subject to further design development and change  
Storage allocations and areas are not necessarily shown on the drawings and are subject to change

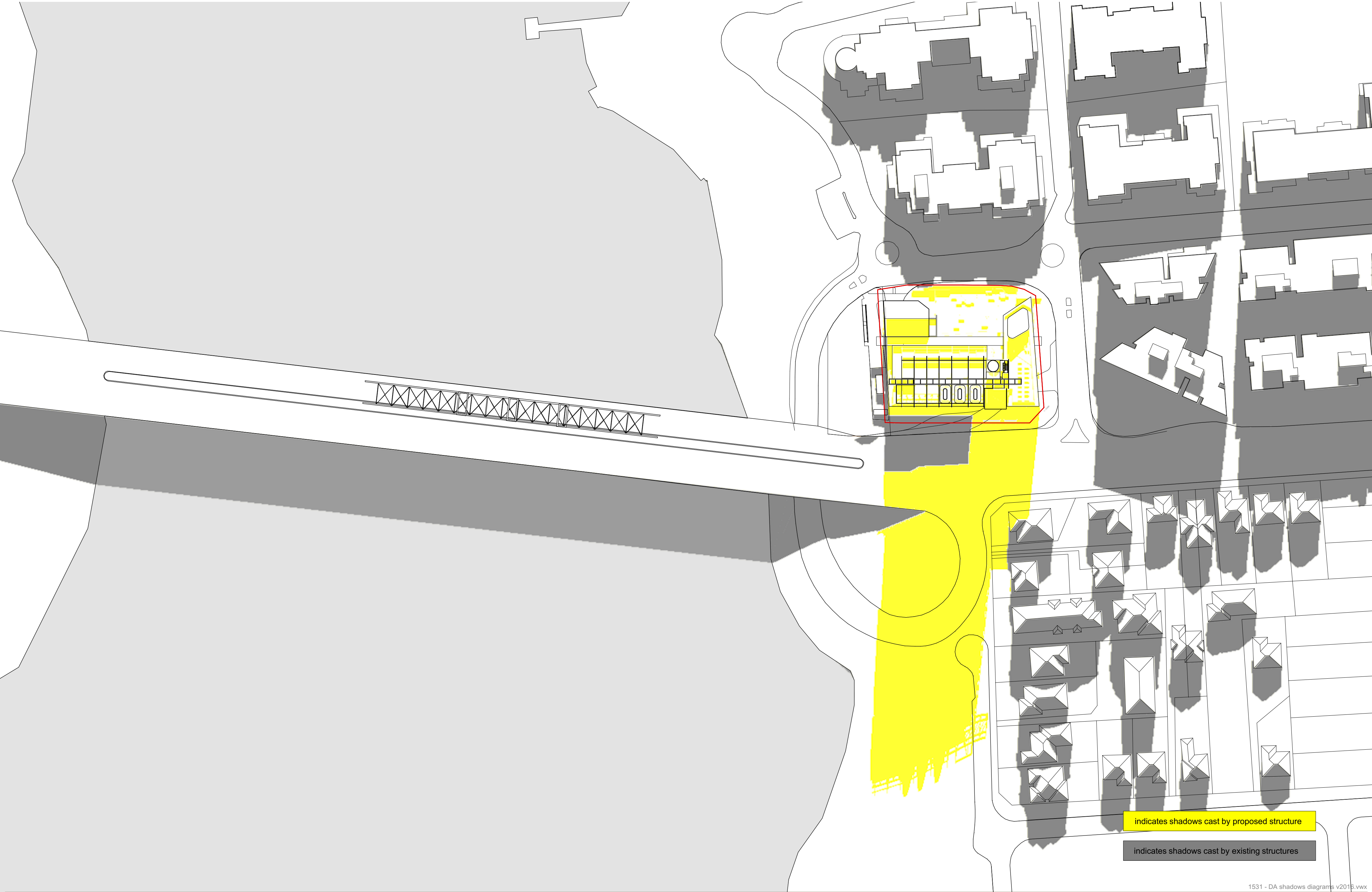
1531 - DA shadows diagrams v2016.vwx

DA 40 C

C 28/11/17 Indicative Development Application









1531 - DA shadows diagrams v2016.vwx

shadow diagrams\_21st of june 3 pm  
mixed use development @


8 parsonage street RYDE

**HOLDMARK**

Holdmark Property Group  
Suite 2/2-4 Giffnock Ave, Macquarie Park NSW 2113  
p + 61 2 9889 5540 f + 61 2 9888 5829

**COX**

COX richardson architects  
level 6 / 155 clarence street sydney 2038  
p + 61 2 9267 9599 f + 61 2 9264 5844

**KENNEDY ASSOCIATES ARCHITECTS**

kennedy associates architects  
level 3 / 1 booth street annandale 2038  
p + 61 2 9557 6466 f + 61 2 9557 6477

**NOTES:**  
Internal layouts shown are indicative only for information purposes and are subject to further design development and change  
Window mullions, if shown, are indicative only  
Louvre panels, if shown, are indicative only  
All dimensions and levels shown are approximate  
Any finishes nominated are indicative only and subject to change  
Articulations shown on the façade are indicative only and are subject to further design development and change  
Storage allocations and areas are not necessarily shown on the drawings and are subject to change

DA 41 C