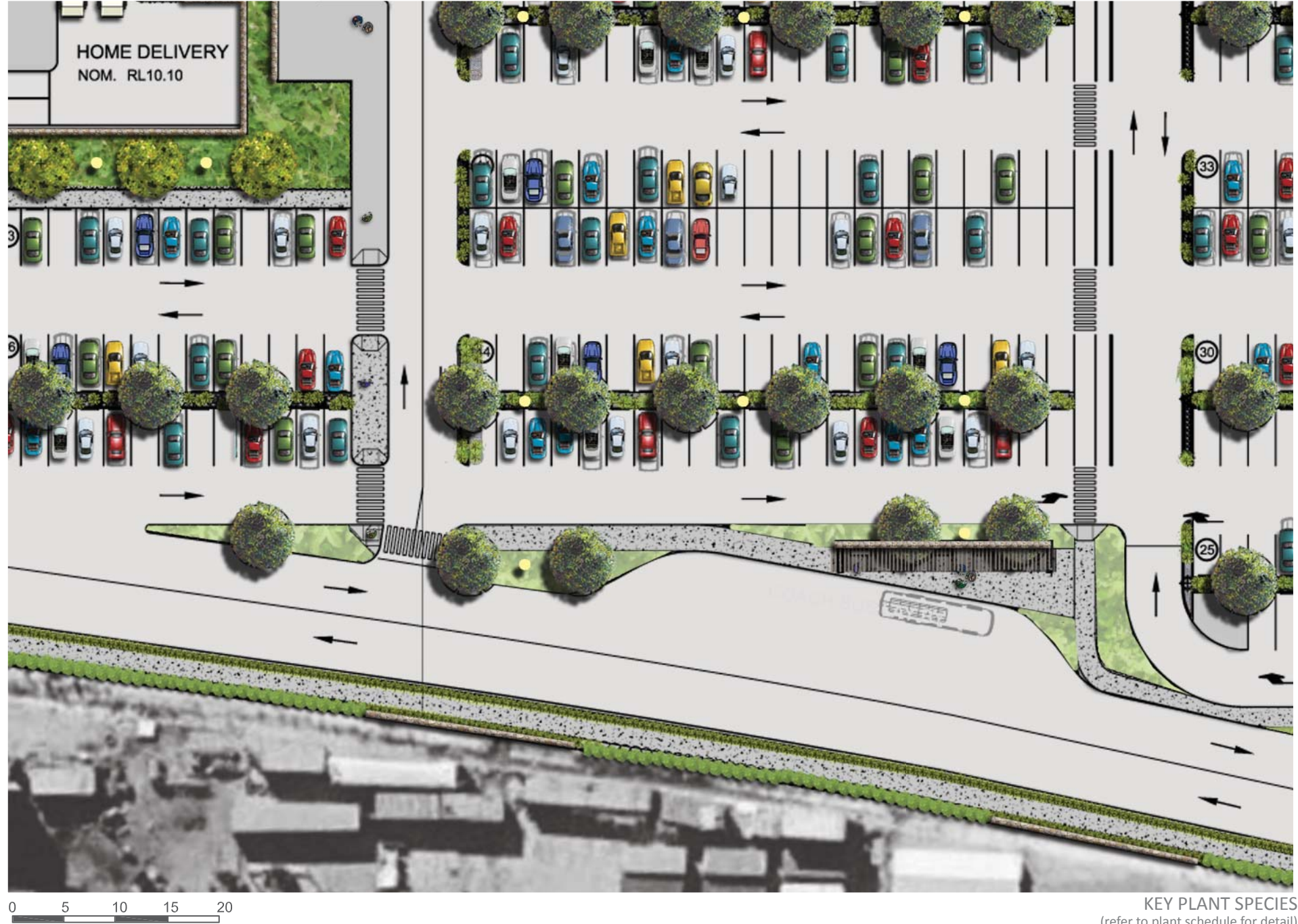




3.6 BUS DROP-OFF / SITE BOUNDARY

The boundary treatment to the Ikea site, considers the site vocabulary of the Gabion wall while forming a practical barrier and visual buffer to the undesirable view beyond. In this zone, the design is constrained by the overhead flight path being an average of 7m from ground level. Gabion walls are used along the boundary spaced so to line up on major visual access routes and circulation paths in the car park for potential use for signage and marketing. These screens are coupled with a Lily Pilly hedge and climbers to present a 'green' barrier. The cycle way link is also provided along this boundary, linking the site within the regional bike network.

The Bus Drop-Off area repeats the site-wide language of gabion walls and allied hedge planting within the landscape. Detailed design will consider opportunities for providing advertising signage in this important arrival and departure location. Seating is to be provided to allow for waiting and collection of groups of bus visitors.



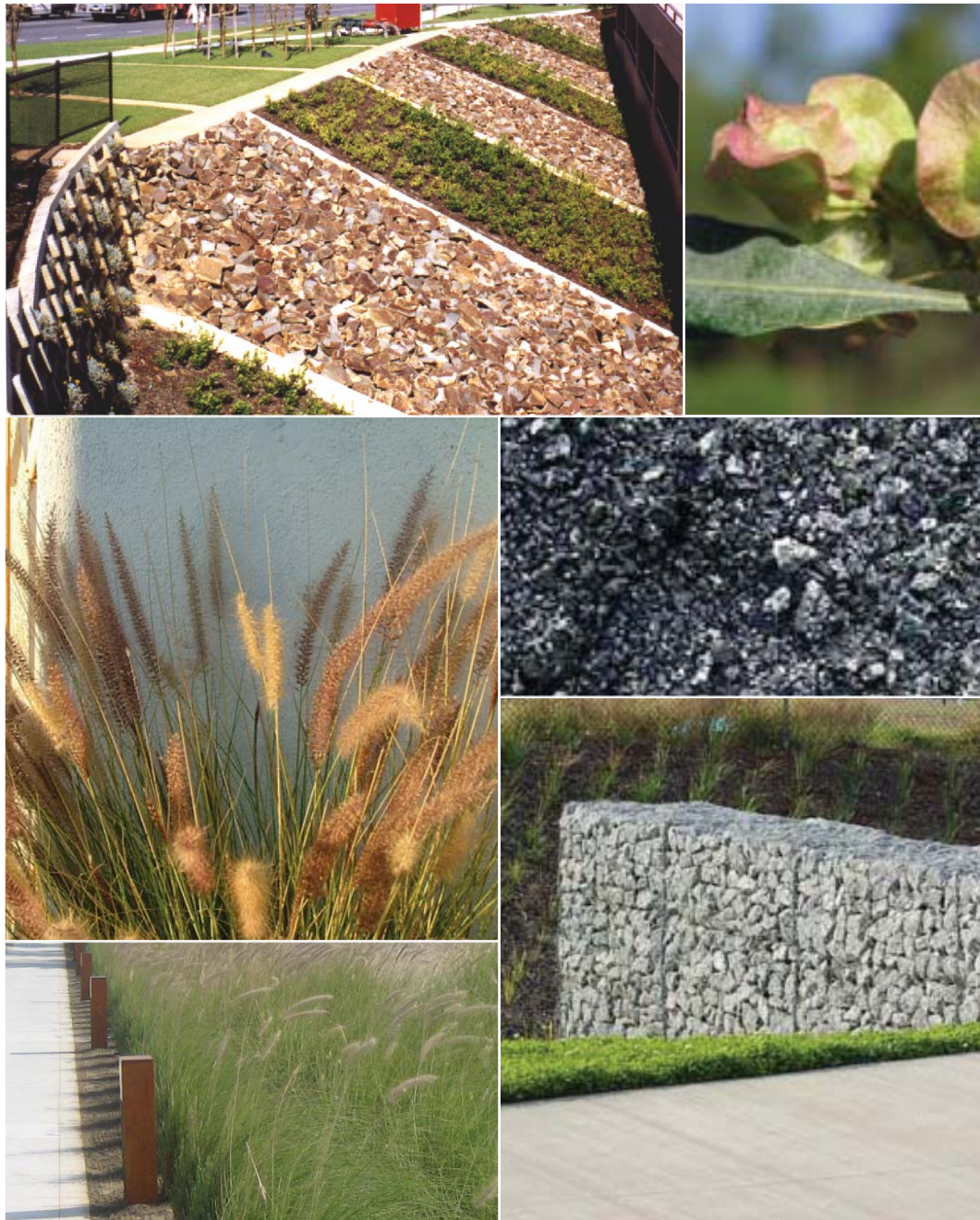
KEY PLANT SPECIES
(refer to plant schedule for detail)

Tristaniopsis lavina Water gum
Carex appressa Tall sedge
Lomandra 'Tanika' Matt Rush
Acacia cognata Limelight
Westringia fruticosa Coastal Rosemary

SITE IMAGE



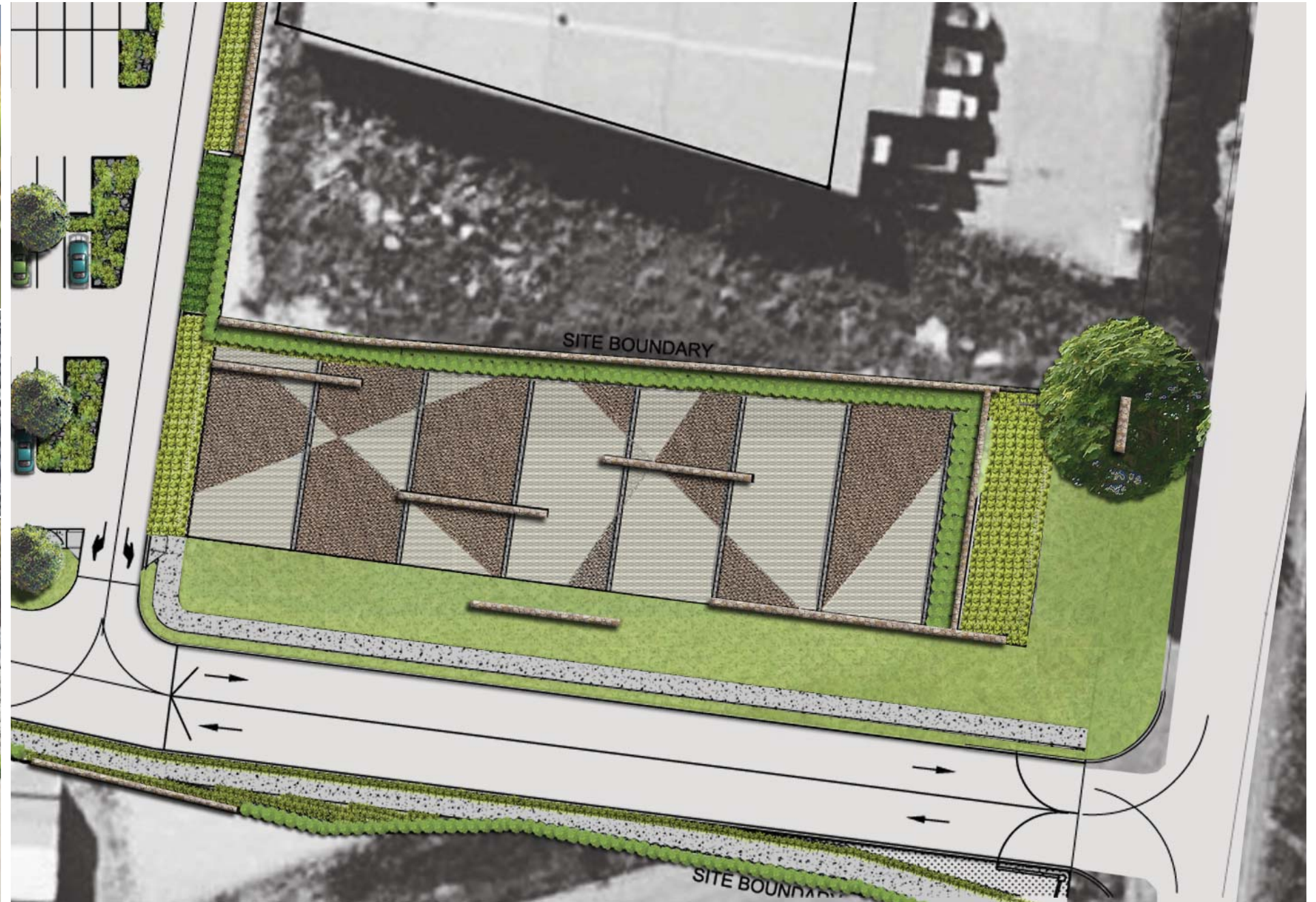
SITE IMAGE



3.7 BELLEVUE STREET

A secondary access point to the Ikea site is located at Bellevue Street. As well as truck, bus and car entry, a pedestrian / cycle path begins here running south along the boundary and eventually linking to Smith Street and the Cooks River Parkland Path network. This site entry also presents an opportunity for a dramatic landscape intervention. The proposed treatment is to create a quality visual landscape that represents the overall landscape identity treatment of the site. Along with signage and secure entry gates, the landscape will clearly identify the arrival to the Ikea site.

The design provides broad areas of ground covers and gravel surface treatments, complimented by low blade walls and boundary planting. The aim is to enhance the appearance with low-maintenance treatments, while promoting CPTED principles and not encourage general use of the area. A pedestrian path is to be provided on the northern side of the roadway, separate to the cycle way provision for pedestrian access to the store.

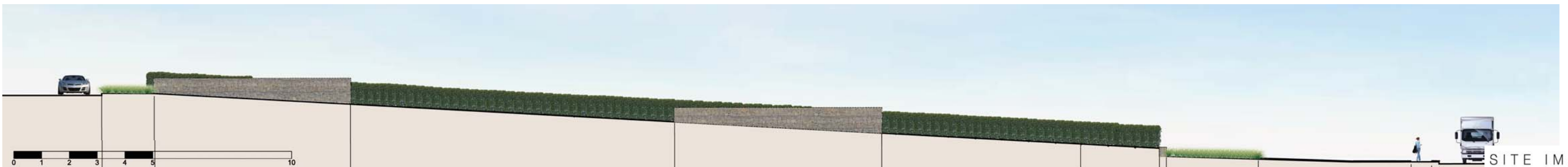


0 5 10 15 20

KEY PLANT SPECIES
(refer to plant schedule for detail)

Syzygium luehmannii Lily Pilly
Pennisetum alopecuroides Swamp Foxtail Grass
Grevillea poorinda 'Royal mantle' phosphate grevillea
Lomandra 'Tanika' Matt rush

SITE IMAGE



SITE IMAGE

4.0 APPENDIX
DETAIL DESIGN ELEMENTS

4.1 PLANTING	22
4.2 CPTED PRINCIPLES & STRATEGY	23
4.3 HERITAGE STRATEGY	25



SITE IMAGE