



Legend

ART1

Art Feature, Type 1:  
Painted soffit to main entry lobby.

ART2

Art Feature, Type 2:  
Embossed feature symbol into precast panel.

ART3

Art Feature, Type 3:  
Existing art wall, preserved.

AWN

Awing, Type 1:  
Folded steel awning with decorative motif laser cut into leading edge. Paint finish equal to PF3.

BALI

Balustrade, Type 1:  
Vertical 100 x 10 steel baluster, no top rail. Balusters angled at 90°. Powder coat finish, colour and finish to match PCP1.

BALA

Balustrade, Type 2:  
Frameless clear glass balustrade system with separate steel flat bar handrail / stanchion support behind. Colour and finish to match PCP1.

CLD1

Cladding, Type 1:  
Stone cladding system, random length stretcher bond. Finish split face and / or exfoliate finish. Coursing height varies between 75 and 150mm. Random stone selection to match Hawksbury sandstone, Port Fairy Bluestone and off white / grey speckled granite.

CLD2

Cladding, Type 2:  
Timber cladding system, vertical 'V' jointed 90mm wide. Service doors integrated to match. Timber equal to Spotted Gum in appearance. Natural colour with pigmented oil finish.

CLD3

Cladding, Type 3:  
Terracotta facade tile system, 175mm horizontal profile, colour range varies to suit facade concept and surface finish varies between glazed and natural. Facade system equal to NBR Architectural Terracotta. Colours and finishes equal to TERRART natural and engobe colour range.

CLD4

Cladding, Type 4:  
Metal cladding system, express jointed, with concealed essential service doors and louvers. Prefinished coating system. Colour and finish to match Alpolic 'Slate Grey' [MJ254-G30].

CLD5

Cladding, Type 5:  
Metal cladding system, express jointed. Prefinished coating system. Colour and finish to match Alpolic 'Milk White' [M7774-G30].

CLD6

Cladding, Type 6:  
Metal cladding system, express jointed. Prefinished coating system. Colour and finish to match Alpolic 'Charcoal' [M7991-G30].

CCP1

Concrete, Off Form Finish, Type 1:  
Natural concrete, smooth board finish. Colour natural grey concrete mix. Penetrating clear matte sealer over.

CCP2

Concrete, Off Form Finish, Type 2:  
Natural concrete, textured rough sawn timber board finish. Colour natural grey concrete mix. Penetrating clear matte sealer over.

CPC1

Concrete, Precast, Type 1:  
Smooth finish concrete wall elements. Colour 'lite & brittle' concrete mix with white oxide pigment additive. Penetrating clear matte sealer over.

CPC2

Concrete, Precast, Type 2:  
Decorative finish concrete wall elements, vertical square edged profiled form liner finish, 30mm spacing, 15mm depth equal to Reckli 2/77 'Tigris' profile. Colour equal to CPC1. Penetrating clear matte sealer over.

CPC3

Concrete, Precast, Type 3:  
Decorative finish concrete wall elements, vertical radius profiled form liner finish, 30mm spacing, 32mm diam., 53mm depth equal to Reckli 2/94 'Orinoco' profile. Colour equal to CPC1. Penetrating clear matte sealer over.

DPI

Decorative Pattern, Type 1:  
Custom decorative pattern integrated to finished glass surface to enhance privacy.

FT1

Facade Glazing System, Type 1: Street Level Entry Foyer & Associated Spaces  
Glass, clear. Framing system, front faced glazing system with decorative 300mm projecting vertical mullions. Aluminium, powder coat finish. Structural steel supports fully concealed. Colour and finish to match PCP1. Refer to Section J assessment for performance requirements. Reflectivity to be less than 20%.

FT2

Facade Glazing System, Type 2: Decorative Bay Window Elements  
Glass, clear. Front faced glazing system with shadow box glazing detail to conceal spandrel and slab edge elements. Aluminium, powder coat finish. Colour and finish to match PCP1. Refer to Section J assessment for performance requirements. Reflectivity to be less than 20%.

FT3

Facade Glazing System, Type 3: Infill Windows  
Glass, grey body tint. Framing system, aluminium, with decorative 150mm projecting vertical fins and aluminium slab extension. Powder coat finish, colour to match PCP1. Refer to Section J assessment for performance requirements. Reflectivity to be less than 20%.

FT4

Facade Glazing System, Type 4: Infill Windows  
Glass, clear. Framing system, aluminium, powder coat finish. Mechanical louvers integral to frame system. Matching aluminium cover plates to conceal slab edges and adjacent wall elements. Framing colour to match PCP1. Refer to Section J assessment for performance requirements. Reflectivity to be less than 20%.

FT5

Facade Glazing System, Type 5: Infill Windows  
Glass, grey body tint. Framing system, aluminium, with decorative 150mm projecting vertical fins and aluminium slab extension. Powder coat finish, colour to match PCP1. Refer to Section J assessment for performance requirements. Reflectivity to be less than 20%.

G11

Gate, Type 1:  
Decorative timber and steel entry gate. Timber equal to CLD2 material and finish. Steel, paint finish, equal to PF3.

HRI

Handrail, Type 1:  
Decorative handrail to street level interface. 32mm diam. steel, bronze finish.

UV1

Louvre Roof, Type 1:  
Fixed horizontal elliptical aluminium louvre system, 250mm profile. Angle set to shield view of plant from upper levels. Powder coat finish, colour and finish to match PCP1.

MHR

Metal Deck Roofing, Type 1:  
Standing seam profiled roofing system to match Lysaght 'Longline 305' profile. Colour to match Colorbond 'Monument'.

PCP1

Powdercoat Finish, Type 1:  
Colour and finish to match Dulux - Fluorocel 'Xtreme Charcoal' satin [9647297M].

PI1

Paint Finish, Type 1:  
Pigment stain paint system, equal to Keim Concrete Lasur System. Pigment. 30% concentration / opacity. Colour 'White / Weiss' [9872].

PF2

Paint Finish, Type 2:  
Pigment stain paint system, equal to Keim Concrete Lasur System. Pigment. 70% concentration / opacity. Colour 'Black / Schwartz' [9008].

PF3

Paint Finish, Type 3:  
Colour and finish to match Dulux - Micaceous Iron Oxide 'Mid Grey'.

PVI

Paving, Type 1:  
Natural stone paving to external steps, landings and foyer areas. Refer to Landscape documentation for further information.

SCI

Screen, Type 1:  
Fixed vertical elliptical aluminium louvre system, 250mm profile. Powder coat finish, colour and finish to match PCP1.

SG1

Signage, Type 1:  
Integral building identification signage, surface fixed onto building facade. Bronze finish. Size and extent as per elevation drawings.

VHR

Ventilation Hatch, Type 1:  
Aluminium ventilation hatch integrated with glazing. Aluminium, powder coat finish. Colour and finish to match PCP1.

Note Refer to Landscape documentation for public domain and landscape areas for further information regarding materials and finishes selection.

										NOTES  THIS DRAWING IS COPYRIGHT © OF TURNER. NO REPRODUCTION WITHOUT PERMISSION. UNLESS NOTED OTHERWISE THIS DRAWING IS NOT FOR CONSTRUCTION. ALL DIMENSIONS AND LEVELS ARE TO BE CHECKED ON SITE PRIOR TO THE COMMENCEMENT OF WORK. NO PART TURNER IF ANY DISCREPANCIES FOR CLARIFICATION BEFORE PROCEEDING WITH WORK. DRAWINGS ARE NOT TO BE SCALED. USE ONLY FOUR DIGIT DIMENSIONS. REFER TO CONSULTANT DOCUMENTATION FOR FURTHER INFORMATION.										
CLIENT  Aboriginal Housing Company  83-123 Eveleigh Street Redfern NSW 2016 Australia																				
										Rev  07/06/17  DS  Issue for DA Submission - DRP  09/06/17  DS  Issue for DA Submission - DoP  12/12/17  DS  Issue for Information  19/04/18  DS  Amended DA Submission - DoP										





LOUIS ST.		PEMULWUY PRECINCT 1		COL JAMES - STUDENT ACCOMMODATION		RAILWAY CORRIDOR																																		
<div><div>Legend</div><div><div><div>ART1</div><div>Art Feature, Type 1: Painted soffit to main entry lobby.</div></div><div><div>ART2</div><div>Art Feature, Type 2: Embossed feature symbol into precast panel.</div></div><div><div>ART3</div><div>Art Feature, Type 3: Existing art wall, preserved.</div></div><div><div>AWN</div><div>Awning, Type 1: Folded steel awning with decorative motif laser cut into leading edge. Paint finish equal to PF3.</div></div><div><div>BAL1</div><div>Balustrade, Type 1: Vertical 100 x 10 steel baluster, no top rail. Balusters angled at 90°. Powder coat finish, colour and finish to match PCP1.</div></div><div><div>BAL2</div><div>Balustrade, Type 2: Frameless clear glass balustrade system with separate steel flat bar handrail / stanchion support behind. Colour and finish to match PCP1.</div></div><div><div>CLD1</div><div>Cladding, Type 1: Stone cladding system, random length stretcher bond. Finish split face and / or exfoliate finish. Coursing height varies between 75 and 150mm. Random stone selection to match Hawksbury sandstone, Port Fairy Bluestone and off white / grey speckled granite.</div></div><div><div>CLD2</div><div>Cladding, Type 2: Timber cladding system, vertical 'V' jointed 90mm wide. Service doors integrated to match. Timber equal to Spotted Gum in appearance. Natural colour with pigmented oil finish.</div></div><div><div>CLD3</div><div>Cladding, Type 3: Terracotta facade tile system, 125mm horizontal profile, colour range varies to suit facade concept and surface finish varies between glazed and natural. Facade system equal to NBS Architectural Terracotta. Colours and finishes equal to TERRAART natural and engobe colour range.</div></div><div><div>CLD4</div><div>Cladding, Type 4: Metal cladding system, express jointed, with concealed essential service doors and louvers. Prefinished coating system. Colour and finish to match Alpolic 'Slate Grey' [MJ254-G30].</div></div><div><div>CLD5</div><div>Cladding, Type 5: Metal cladding system, express jointed. Prefinished coating system. Colour and finish to match Alpolic 'Milk White' [M7774-G30].</div></div><div><div>CLD6</div><div>Cladding, Type 6: Metal cladding system, express jointed. Prefinished coating system. Colour and finish to match Alpolic 'Charcoal' [M7991-G30].</div></div><div><div>CCF1</div><div>Concrete, Off Form Finish, Type 1: Natural concrete, smooth board finish. Colour natural grey concrete mix. Penetrating clear matte sealer over.</div></div><div><div>CCF2</div><div>Concrete, Off Form Finish, Type 2: Natural concrete, textured rough sawn timber board finish. Colour natural grey concrete mix. Penetrating clear matte sealer over.</div></div><div><div>CPC1</div><div>Concrete, Precast, Type 1: Smooth finish concrete wall elements. Colour 'lite &amp; brittle' concrete mix with white oxide pigment additive. Penetrating clear matte sealer over.</div></div><div><div>CPC2</div><div>Concrete, Precast, Type 2: Decorative finish concrete wall elements, vertical square edged profiled form liner finish, 30mm spacing, 15mm depth equal to Reckli 2/77 'Tigris' profile. Colour equal to CPC1. Penetrating clear matte sealer over.</div></div><div><div>CPC3</div><div>Concrete, Precast, Type 3: Decorative finish concrete wall elements, vertical radius profiled form liner finish, 30mm spacing, 32mm diam., 53mm depth equal to Reckli 2/94 'Orinoco' profile. Colour equal to CPC1. Penetrating clear matte sealer over.</div></div><div><div>DP1</div><div>Decorative Pattern, Type 1: Custom decorative pattern integrated to finished glass surface to enhance privacy.</div></div><div><div>FT1</div><div>Facade Glazing System, Type 1: <i>Street Level Entry Foyer &amp; Associated Spaces</i> Glass, clear. Framing system, front faced glazing system with decorative 300mm projecting vertical mullions. Aluminium, powder coat finish. Structural steel supports fully concealed. Colour and finish to match PCP1. Refer to Section J assessment for performance requirements. Reflectivity to be less than 20%.</div></div><div><div>FT2</div><div>Facade Glazing System, Type 2: <i>Decorative Bay Window Elements</i> Glass, clear. Front faced glazing system with shadow box glazing detail to conceal spandrel and slab edge elements. Aluminium, powder coat finish. Colour and finish to match PCP1. Refer to Section J assessment for performance requirements. Reflectivity to be less than 20%.</div></div><div><div>FT3</div><div>Facade Glazing System, Type 3: <i>Window Wall Elements</i> Glass, grey body tint. Framing system, aluminium, powder coat finish. Colour and finish to match PCP1. Refer to Section J assessment for performance requirements. Reflectivity to be less than 20%.</div></div><div><div>FT4</div><div>Facade Glazing System, Type 4: <i>Infill Windows</i> Glass, clear. Framing system, aluminium, powder coat finish. Mechanical louvers integral to frame system. Matching aluminium cover plates to conceal slab edges and adjacent wall elements. Framing colour to match PCP1. Refer to Section J assessment for performance requirements. Reflectivity to be less than 20%.</div></div><div><div>FT5</div><div>Facade Glazing System, Type 5: <i>Infill Windows</i> Glass, grey body tint. Framing system, aluminium, with decorative 150mm projecting vertical fins and aluminium slab extension. Powder coat finish, colour to match PCP1. Refer to Section J assessment for performance requirements. Reflectivity to be less than 20%.</div></div><div><div>G11</div><div>Gate, Type 1: Decorative timber and steel entry gate. Timber equal to CLD2 material and finish. Steel, paint finish, equal to PF3.</div></div><div><div>HR1</div><div>Handrail, Type 1: Decorative handrail to street level interface. 32mm diam. steel, bronze finish.</div></div><div><div>LV1</div><div>Louvre Roof, Type 1: Fixed horizontal elliptical aluminium louvre system, 250mm profile. Angle set to shield view of plant from upper levels. Powder coat finish, colour and finish to match PCP1.</div></div><div><div>MHR</div><div>Metal Deck Roofing, Type 1: Standing seam profiled roofing system to match Lysaght 'Longline 305' profile. Colour to match Colorbond 'Monument'.</div></div><div><div>PCP1</div><div>Powdercoat Finish, Type 1: Colour and finish to match Dulux - Fluorocel 'Xtreme Charcoal' satin [9647297M].</div></div><div><div>PF1</div><div>Paint Finish, Type 1: Pigment stain paint system, equal to Keim Concretal Lasur System.Pigment. 30% concentration / opacity. Colour 'White / Weiss' [9872].</div></div><div><div>PF2</div><div>Paint Finish, Type 2: Pigment stain paint system, equal to Keim Concretal Lasur System.Pigment. 70% concentration / opacity. Colour 'Black / Schwartz' [9008].</div></div><div><div>PF3</div><div>Paint Finish, Type 3: Colour and finish to match Dulux - Micaceous Iron Oxide 'Mid Grey'.</div></div><div><div>PV1</div><div>Paving, Type 1: Natural stone paving to external steps, landings and foyer areas. Refer to Landscape documentation for further information.</div></div><div><div>SC1</div><div>Screen, Type 1: Fixed vertical elliptical aluminium louvre system, 250mm profile. Powder coat finish, colour and finish to match PCP1.</div></div><div><div>SG1</div><div>Signage, Type 1: Integral building identification signage, surface fixed onto building facade. Bronze finish. Size and extent as per elevation drawings.</div></div><div><div>VH1</div><div>Ventilation Hatch, Type 1: Aluminium ventilation hatch integrated with glazing. Aluminium, powder coat finish. Colour and finish to match PCP1.</div></div><div>Note</div><div>Refer to Landscape documentation for public domain and landscape areas for further information regarding materials and finishes selection.</div></div></div> <div><table><tr><th>Rev</th><th>Date</th><th>Approved by</th><th>Revision Notes</th></tr><tr><td>R</td><td>07/06/17</td><td>DS</td><td>Issue for DA Submission - DRP</td></tr><tr><td>S</td><td>09/06/17</td><td>DS</td><td>Issue for DA Submission - DoP</td></tr><tr><td>T</td><td>12/12/17</td><td>DS</td><td>Issue for Information</td></tr><tr><td>U</td><td>19/04/18</td><td>DS</td><td>Amended DA Submission - DoP</td></tr></table><table><tr><td>Project Title</td><td>Col James - Student Accommodation</td></tr><tr><td>83-123 Eveleigh Street Redfern NSW 2016 Australia</td><td></td></tr><tr><td>Drawing Title</td><td>GA Elevations</td></tr><tr><td>Lawson Street_West Elevation</td><td></td></tr></table><table><tr><td>Scale</td><td>1:200 @A1, 50% @ A3</td></tr><tr><td>Project No.</td><td>16107</td></tr><tr><td>Drawn by</td><td>CB</td></tr><tr><td>Status</td><td>Rev</td></tr><tr><td>Development Application</td><td>DA-250-020</td></tr><tr><td>U</td><td></td></tr></table><div>GA Elevations</div><div>Lawson Street_West Elevation</div><div>Scale</div><div>1:200 @A1, 50% @ A3</div><div>Project No.</div><div>16107</div><div>Drawn by</div><div>CB</div><div>Status</div><div>Rev</div><div>Development Application</div><div>DA-250-020</div><div>U</div><div>GA Elevations</div><div>Lawson Street_West Elevation</div><div>Scale</div><div>1:200 @A1, 50% @ A3</div><div>Project No.</div><div>16107</div><div>Drawn by</div><div>CB</div><div>Status</div><div>Rev</div><div>Development Application</div><div>DA-250-020</div><div>U</div><div>GA Elevations</div><div>Lawson Street_West Elevation</div><div>Scale</div><div>1:200 @A1, 50% @ A3</div><div>Project No.</div><div>16107</div><div>Drawn by</div><div>CB</div><div>Status</div><div>Rev</div><div>Development Application</div><div>DA-250-020</div><div>U</div><div>GA Elevations</div><div>Lawson Street_West Elevation</div><div>Scale</div><div>1:200 @A1, 50% @ A3</div><div>Project No.</div><div>16107</div><div>Drawn by</div><div>CB</div><div>Status</div><div>Rev</div><div>Development Application</div><div>DA-250-020</div><div>U</div><div>GA Elevations</div><div>Lawson Street_West Elevation</div><div>Scale</div><div>1:200 @A1, 50% @ A3</div><div>Project No.</div><div>16107</div><div>Drawn by</div><div>CB</div><div>Status</div><div>Rev</div><div>Development Application</div><div>DA-250-020</div><div>U</div><div>GA Elevations</div><div>Lawson Street_West Elevation</div><div>Scale</div><div>1:200 @A1, 50% @ A3</div><div>Project No.</div><div>16107</div><div>Drawn by</div><div>CB</div><div>Status</div><div>Rev</div><div>Development Application</div><div>DA-250-020</div><div>U</div><div>GA Elevations</div><div>Lawson Street_West Elevation</div><div>Scale</div><div>1:200 @A1, 50% @ A3</div><div>Project No.</div><div>16107</div><div>Drawn by</div><div>CB</div><div>Status</div><div>Rev</div><div>Development Application</div><div>DA-250-020</div><div>U</div><div>GA Elevations</div><div>Lawson Street_West Elevation</div><div>Scale</div><div>1:200 @A1, 50% @ A3</div><div>Project No.</div><div>16107</div><div>Drawn by</div><div>CB</div><div>Status</div><div>Rev</div><div>Development Application</div><div>DA-250-020</div><div>U</div><div>GA Elevations</div><div>Lawson Street_West Elevation</div><div>Scale</div><div>1:200 @A1, 50% @ A3</div><div>Project No.</div><div>16107</div><div>Drawn by</div><div>CB</div><div>Status</div><div>Rev</div><div>Development Application</div><div>DA-250-020</div><div>U</div><div>GA Elevations</div><div>Lawson Street_West Elevation</div><div>Scale</div><div>1:200 @A1, 50% @ A3</div><div>Project No.</div><div>16107</div><div>Drawn by</div><div>CB</div><div>Status</div><div>Rev</div><div>Development Application</div><div>DA-250-020</div><div>U</div><div>GA Elevations</div><div>Lawson Street_West Elevation</div><div>Scale</div><div>1:200 @A1, 50% @ A3</div><div>Project No.</div><div>16107</div><div>Drawn by</div><div>CB</div><div>Status</div><div>Rev</div><div>Development Application</div><div>DA-250-020</div><div>U</div><div>GA Elevations</div><div>Lawson Street_West Elevation</div><div>Scale</div><div>1:200 @A1, 50% @ A3</div><div>Project No.</div><div>16107</div><div>Drawn by</div><div>CB</div><div>Status</div><div>Rev</div><div>Development Application</div><div>DA-250-020</div><div>U</div><div>GA Elevations</div><div>Lawson Street_West Elevation</div><div>Scale</div><div>1:200 @A1, 50% @ A3</div><div>Project No.</div><div>16107</div><div>Drawn by</div><div>CB</div><div>Status</div><div>Rev</div><div>Development Application</div><div>DA-250-020</div><div>U</div><div>GA Elevations</div><div>Lawson Street_West Elevation</div><div>Scale</div><div>1:200 @A1, 50% @ A3</div><div>Project No.</div><div>16107</div><div>Drawn by</div><div>CB</div><div>Status</div><div>Rev</div><div>Development Application</div><div>DA-250-020</div><div>U</div><div>GA Elevations</div><div>Lawson Street_West Elevation</div><div>Scale</div><div>1:200 @A1, 50% @ A3</div><div>Project No.</div><div>16107</div><div>Drawn by</div><div>CB</div><div>Status</div><div>Rev</div><div>Development Application</div><div>DA-250-020</div><div>U</div><div>GA Elevations</div><div>Lawson Street_West Elevation</div><div>Scale</div><div>1:200 @A1, 50% @ A3</div><div>Project No.</div><div>16107</div><div>Drawn by</div><div>CB</div><div>Status</div><div>Rev</div><div>Development Application</div><div>DA-250-020</div><div>U</div><div>GA Elevations</div><div>Lawson Street_West Elevation</div><div>Scale</div><div>1:200 @A1, 50% @ A3</div><div>Project No.</div><div>16107</div><div>Drawn by</div><div>CB</div><div>Status</div><div>Rev</div><div>Development Application</div><div>DA-250-020</div><div>U</div><div>GA Elevations</div><div>Lawson Street_West Elevation</div><div>Scale</div><div>1:200 @A1, 50% @ A3</div><div>Project No.</div><div>16107</div><div>Drawn by</div><div>CB</div><div>Status</div><div>Rev</div><div>Development Application</div><div>DA-250-020</div><div>U</div><div>GA Elevations</div><div>Lawson Street_West Elevation</div><div>Scale</div><div>1:200 @A1, 50% @ A3</div><div>Project No.</div><div>16107</div><div>Drawn by</div><div>CB</div><div>Status</div><div>Rev</div><div>Development Application</div><div>DA-250-020</div><div>U</div><div>GA Elevations</div><div>Lawson Street_West Elevation</div><div>Scale</div><div>1:200 @A1, 50% @ A3</div><div>Project No.</div><div>16107</div><div>Drawn by</div><div>CB</div><div>Status</div><div>Rev</div><div>Development Application</div><div>DA-250-020</div><div>U</div><div>GA Elevations</div><div>Lawson Street_West Elevation</div><div>Scale</div><div>1:200 @A1, 50% @ A3</div><div>Project No.</div><div>16107</div><div>Drawn by</div><div>CB</div><div>Status</div><div>Rev</div><div>Development Application</div><div>DA-250-020</div><div>U</div><div>GA Elevations</div><div>Lawson Street_West Elevation</div><div>Scale</div><div>1:200 @A1, 50% @ A3</div><div>Project No.</div><div>16107</div><div>Drawn by</div><div>CB</div><div>Status</div><div>Rev</div><div>Development Application</div><div>DA-250-020</div><div>U</div><div>GA Elevations</div><div>Lawson Street_West Elevation</div><div>Scale</div><div>1:200 @A1, 50% @ A3</div><div>Project No.</div><div>16107</div><div>Drawn by</div><div>CB</div><div>Status</div><div>Rev</div><div>Development Application</div><div>DA-250-020</div><div>U</div><div>GA Elevations</div><div>Lawson Street_West Elevation</div><div>Scale</div><div>1:200 @A1, 50% @ A3</div><div>Project No.</div><div>16107</div><div>Drawn by</div><div>CB</div><div>Status</div><div>Rev</div><div>Development Application</div><div>DA-250-020</div><div>U</div><div>GA Elevations</div><div>Lawson Street_West Elevation</div><div>Scale</div><div>1:200 @A1, 50% @ A3</div><div>Project No.</div><div>16107</div><div>Drawn by</div><div>CB</div><div>Status</div><div>Rev</div><div>Development Application</div><div>DA-250-020</div><div>U</div><div>GA Elevations</div><div>Lawson Street_West Elevation</div><div>Scale</div><div>1:200 @A1, 50% @ A3</div><div>Project No.</div><div>16107</div><div>Drawn by</div><div>CB</div><div>Status</div><div>Rev</div><div>Development Application</div><div>DA-250-020</div><div>U</div><div>GA Elevations</div><div>Lawson Street_West Elevation</div><div>Scale</div><div>1:200 @A1, 50% @ A3</div><div>Project No.</div><div>16107</div><div>Drawn by</div><div>CB</div><div>Status</div><div>Rev</div><div>Development Application</div><div>DA-250-020</div><div>U</div><div>GA Elevations</div><div>Lawson Street_West Elevation</div><div>Scale</div><div>1:200 @A1, 50% @ A3</div><div>Project No.</div><div>16107</div><div>Drawn by</div><div>CB</div><div>Status</div><div>Rev</div><div>Development Application</div><div>DA-250-020</div><div>U</div><div>GA Elevations</div><div>Lawson Street_West Elevation</div><div>Scale</div><div>1:200 @A1, 50% @ A3</div><div>Project No.</div><div>16107</div><div>Drawn by</div><div>CB</div><div>Status</div><div>Rev</div><div>Development Application</div><div>DA-250-020</div><div>U</div><div>GA Elevations</div><div>Lawson Street_West Elevation</div><div>Scale</div><div>1:200 @A1, 50% @ A3</div><div>Project No.</div><div>16107</div><div>Drawn by</div><div>CB</div><div>Status</div><div>Rev</div><div>Development Application</div><div>DA-250-020</div><div>U</div><div>GA Elevations</div><div>Lawson Street_West Elevation</div><div>Scale</div><div>1:200 @A1, 50% @ A3</div><div>Project No.</div><div>16107</div><div>Drawn by</div><div>CB</div><div>Status</div><div>Rev</div><div>Development Application</div><div>DA-250-020</div><div>U</div><div>GA Elevations</div><div>Lawson Street_West Elevation</div><div>Scale</div><div>1:200 @A1, 50% @ A3</div><div>Project No.</div><div>16107</div><div>Drawn by</div><div>CB</div><div>Status</div><div>Rev</div><div>Development Application</div><div>DA-250-020</div><div>U</div><div>GA Elevations</div><div>Lawson Street_West Elevation</div><div>Scale</div><div>1:200 @A1, 50% @ A3</div><div>Project No.</div><div>16107</div><div>Drawn by</div><div>CB</div><div>Status</div><div>Rev</div><div>Development Application</div><div>DA-250-020</div><div>U</div><div>GA Elevations</div><div>Lawson Street_West Elevation</div><div>Scale</div><div>1:200 @A1, 50% @ A3</div><div>Project No.</div><div>16107</div><div>Drawn by</div><div>CB</div><div>Status</div><div>Rev</div><div>Development Application</div><div>DA-250-020</div><div>U</div><div>GA Elevations</div><div>Lawson Street_West Elevation</div><div>Scale</div><div>1:200 @A1, 50% @ A3</div><div>Project No.</div><div>16107</div><div>Drawn by</div><div>CB</div><div>Status</div><div>Rev</div><div>Development Application</div><div>DA-250-020</div><div>U</div><div>GA Elevations</div><div>Lawson Street_West Elevation</div><div>Scale</div><div>1:200 @A1, 50% @ A3</div><div>Project No.</div><div>16107</div><div>Drawn by</div><div>CB</div><div>Status</div><div>Rev</div><div>Development Application</div><div>DA-250-020</div><div>U</div><div>GA Elevations</div><div>Lawson Street_West Elevation</div><div>Scale</div><div>1:200 @A1, 50% @ A3</div><div>Project No.</div><div>16107</div><div>Drawn by</div><div>CB</div><div>Status</div><div>Rev</div><div>Development Application</div><div>DA-250-020</div><div>U</div><div>GA Elevations</div><div>Lawson Street_West Elevation</div><div>Scale</div><div>1:200 @A1, 50% @ A3</div><div>Project No.</div><div>16107</div><div>Drawn by</div><div>CB</div><div>Status</div><div>Rev</div><div>Development Application</div><div>DA-250-020</div><div>U</div><div>GA Elevations</div><div>Lawson Street_West Elevation</div><div>Scale</div><div>1:200 @A1, 50% @ A3</div><div>Project No.</div><div>16107</div><div>Drawn by</div><div>CB</div><div>Status</div><div>Rev</div><div>Development Application</div><div>DA-250-020</div><div>U</div><div>GA Elevations</div><div>Lawson Street_West Elevation</div><div>Scale</div><div>1:200 @A1, 50% @ A3</div><div>Project No.</div><div>16107</div><div>Drawn by</div><div>CB</div><div>Status</div><div>Rev</div><div>Development Application</div><div>DA-250-020</div><div>U</div><div>GA Elevations</div><div>Lawson Street_West Elevation</div><div>Scale</div><div>1:200 @A1, 50% @ A3</div><div>Project No.</div><div>16107</div><div>Drawn by</div><div>CB</div><div>Status</div><div>Rev</div><div>Development Application</div><div>DA-250-020</div><div>U</div><div>GA Elevations</div><div>Lawson Street_West Elevation</div><div>Scale</div><div>1:200 @A1, 50% @ A3</div><div>Project No.</div><div>16107</div><div>Drawn by</div><div>CB</div><div>Status</div><div>Rev</div><div>Development Application</div><div>DA-250-020</div><div>U</div><div>GA Elevations</div><div>Lawson Street_West Elevation</div><div>Scale</div><div>1:200 @A1, 50% @ A3</div><div>Project No.</div><div>16107</div><div>Drawn by</div><div>CB</div><div>Status</div><div>Rev</div><div>Development Application</div><div>DA-250-020</div><div>U</div><div>GA Elevations</div><div>Lawson Street_West Elevation</div><div>Scale</div><div>1:200 @A1, 50% @ A3</div><div>Project No.</div><div>16107</div><div>Drawn by</div><div>CB</div><div>Status</div><div>Rev</div><div>Development Application</div><div>DA-250-020</div><div>U</div><div>GA Elevations</div><div>Lawson Street_West Elevation</div><div>Scale</div><div>1:200 @A1, 50% @ A3</div><div>Project No.</div><div>16107</div><div>Drawn by</div><div>CB</div><div>Status</div><div>Rev</div><div>Development Application</div><div>DA-250-020</div><div>U</div><div>GA Elevations</div><div>Lawson Street_West Elevation</div><div>Scale</div><div>1:200 @A1, 50% @ A3</div><div>Project No.</div><div>16107</div><div>Drawn by</div><div>CB</div><div>Status</div><div>Rev</div><div>Development Application</div><div>DA-250-020</div><div>U</div><div>GA Elevations</div><div>Lawson Street_West Elevation</div><div>Scale</div><div>1:200 @A1, 50% @ A3</div><div>Project No.</div><div>16107</div><div>Drawn by</div><div>CB</div><div>Status</div><div>Rev</div><div>Development Application</div><div>DA-250-020</div><div>U</div><div>GA Elevations</div><div>Lawson Street_West Elevation</div><div>Scale</div><div>1:200 @A1, 50% @ A3</div><div>Project No.</div><div>16107</div><div>Drawn by</div><div>CB</div><div>Status</div><div>Rev</div><div>Development Application</div><div>DA-250-020</div><div>U</div><div>GA Elevations</div><div>Lawson Street_West Elevation</div><div>Scale</div><div>1:200 @A1, 50% @ A3</div><div>Project No.</div><div>16107</div><div>Drawn by</div><div>CB</div><div>Status</div><div>Rev</div><div>Development Application</div><div>DA-250-020</div><div>U</div><div>GA Elevations</div><div>Lawson Street_West Elevation</div><div>Scale</div><div>1:200 @A1, 50% @ A3</div><div>Project No.</div><div>16107</div><div>Drawn by</div><div>CB</div><div>Status</div><div>Rev</div><div>Development Application</div><div>DA-250-020</div><div>U</div><div>GA Elevations</div><div>Lawson Street_West Elevation</div><div>Scale</div><div>1:200 @A1, 50% @ A3</div><div>Project No.</div><div>16107</div><div>Drawn by</div><div>CB</div><div>Status</div><div>Rev</div><div>Development Application</div><div>DA-250-020</div><div>U</div><div>GA Elevations</div><div>Lawson Street_West Elevation</div><div>Scale</div><div>1:200 @A1, 50% @ A3</div><div>Project No.</div><div>16107</div><div>Drawn by</div><div>CB</div><div>Status</div><div>Rev</div><div>Development Application</div><div>DA-250-020</div><div>U</div><div>GA Elevations</div><div>Lawson Street_West Elevation</div><div>Scale</div><div>1:200 @A1, 50% @ A3</div><div>Project No.</div><div>16107</div><div>Drawn by</div><div>CB</div><div>Status</div><div>Rev</div><div>Development Application</div><div>DA-250-020</div><div>U</div><div>GA Elevations</div><div>Lawson Street_West Elevation</div><div>Scale</div><div>1:200 @A1, 50% @ A3</div><div>Project No.</div><div>16107</div><div>Drawn by</div><div>CB</div><div>Status</div><div>Rev</div><div>Development Application</div><div>DA-250-020</div><div>U</div><div>GA Elevations</div><div>Lawson Street_West Elevation</div><div>Scale</div><div>1:200 @A1, 50% @ A3</div><div>Project No.</div><div>16107</div><div>Drawn by</div><div>CB</div><div>Status</div><div>Rev</div><div>Development Application</div><div>DA-250-020</div><div>U</div><div>GA Elevations</div><div>Lawson Street_West Elevation</div><div>Scale</div><div>1:200 @A1, 50% @ A3</div><div>Project No.</div><div>16107</div><div>Drawn by</div><div>CB</div><div>Status</div><div>Rev</div><div>Development Application</div><div>DA-250-020</div><div>U</div><div>GA Elevations</div><div>Lawson Street_West Elevation</div><div>Scale</div><div>1:200 @A1, 50% @ A3</div><div>Project No.</div><div>16107</div><div>Drawn by</div><div>CB</div><div>Status</div><div>Rev</div><div>Development Application</div><div>DA-250-020</div><div>U</div><div>GA Elevations</div><div>Lawson Street_West Elevation</div><div>Scale</div><div>1:200 @A1, 50% @ A3</div><div>Project No.</div><div>16107</div><div>Drawn by</div><div>CB</div><div>Status</div><div>Rev</div><div>Development Application</div><div>DA-250-020</div><div>U</div><div>GA Elevations</div><div>Lawson Street_West Elevation</div><div>Scale</div><div>1:200 @A1, 50% @ A3</div><div>Project No.</div><div>16107</div><div>Drawn by</div><div>CB</div><div>Status</div><div>Rev</div><div>Development Application</div><div>DA-250-020</div><div>U</div><div>GA Elevations</div><div>Lawson Street_West Elevation</div><div>Scale</div><div>1:200 @A1, 50% @ A3</div><div>Project No.</div><div>16107</div><div>Drawn by</div><div>CB</div><div>Status</div><div>Rev</div><div>Development Application</div><div>DA-250-020</div><div>U</div><div>GA Elevations</div><div>Lawson Street_West Elevation</div><div>Scale</div><div>1:200 @A1, 50% @ A3</div><div>Project No.</div><div>16107</div><div>Drawn by</div><div>CB</div><div>Status</div><div>Rev</div><div>Development Application</div><div>DA-250-020</div><div>U</div><div>GA Elevations</div><div>Lawson Street_West Elevation</div><div>Scale</div><div>1:200 @A1, 50% @ A3</div><div>Project No.</div><div>16107</div><div>Drawn by</div><div>CB</div><div>Status</div><div>Rev</div><div>Development Application</div><div>DA-250-020</div><div>U</div><div>GA Elevations</div><div>Lawson Street_West Elevation</div><div>Scale</div><div>1:200 @A1, 50% @ A3</div><div>Project No.</div><div>16107</div><div>Drawn by</div><div>CB</div><div>Status</div><div>Rev</div><div>Development Application</div><div>DA-250-020</div><div>U</div><div>GA Elevations</div><div>Lawson Street_West Elevation</div><div>Scale</div><div>1:200 @A1, 50% @ A3</div><div>Project No.</div><div>16107</div><div>Drawn by</div><div>CB</div><div>Status</div><div>Rev</div><div>Development Application</div><div>DA-250-020</div><div>U</div><div>GA Elevations</div><div>Lawson Street_West Elevation</div><div>Scale</div><div>1:200 @A1, 50% @ A3</div><div>Project No.</div><div>16107</div><div>Drawn by</div><div>CB</div><div>Status</div><div>Rev</div><div>Development Application</div><div>DA-250-020</div><div>U</div><div>GA Elevations</div><div>Lawson Street_West Elevation</div><div>Scale</div><div>1:200 @A1, 50% @ A3</div><div>Project No.</div><div>16107</div><div>Drawn by</div><div>CB</div><div>Status</div><div>Rev</div><div>Development Application</div><div>DA-250-020</div><div>U</div><div>GA Elevations</div><div>Lawson Street_West Elevation</div><div>Scale</div><div>1:200 @A1, 50% @ A3</div><div>Project No.</div><div>16107</div><div>Drawn by</div><div>CB</div><div>Status</div><div>Rev</div><div>Development Application</div><div>DA-250-020</div><div>U</div><div>GA Elevations</div><div>Lawson Street_West Elevation</div><div>Scale</div><div>1:200 @A1, 50% @ A3</div><div>Project No.</div><div>16107</div><div>Drawn by</div><div>CB</div><div>Status</div><div>Rev</div><div>Development Application</div><div>DA-250-020</div><div>U</div><div>GA Elevations</div><div>Lawson Street_West Elevation</div><div>Scale</div><div>1:200 @A1, 50% @ A3</div><div>Project No.</div><div>16107</div><div>Drawn by</div><div>CB</div><div>Status</div><div>Rev</div><div>Development Application</div><div>DA-250-020</div><div>U</div><div>GA Elevations</div><div>Lawson Street_West Elevation</div><div>Scale</div><div>1:200 @A1, 50% @ A3</div><div>Project No.</div><div>16107</div><div>Drawn by</div><div>CB</div><div>Status</div><div>Rev</div><div>Development Application</div><div>DA-250-020</div><div>U</div><div>GA Elevations</div><div>Lawson Street_West Elevation</div><div>Scale</div><div>1:200 @A1, 50% @ A3</div><div>Project No.</div><div>16107</div><div>Drawn by</div><div>CB</div><div>Status</div><div>Rev</div><div>Development Application</div><div>DA-250-020</div><div>U</div><div>GA Elevations</div><div>Lawson Street_West Elevation</div><div>Scale</div><div>1:200 @A1, 50% @ A3</div><div>Project No.</div><div>16107</div><div>Drawn by</div><div>CB</div><div>Status</div><div>Rev</div><div>Development Application</div><div>DA-250-020</div><div>U</div><div>GA Elevations</div><div>Lawson Street_West Elevation</div><div>Scale</div><div>1:200 @A1, 50% @ A3</div><div>Project No.</div><div>16107</div><div>Drawn by</div><div>CB</div><div>Status</div><div>Rev</div><div>Development Application</div><div>DA-250-020</div><div>U</div><div>GA Elevations</div><div>Lawson Street_West Elevation</div><div>Scale</div><div>1:200 @A1, 50% @ A3</div><div>Project No.</div><div>16107</div><div>Drawn by</div><div>CB</div><div>Status</div><div>Rev</div><div>Development Application</div><div>DA-250-020</div><div>U</div><div>GA Elevations</div><div>Lawson Street_West Elevation</div><div>Scale</div><div>1:200 @A1, 50% @ A3</div><div>Project No.</div><div>16107</div><div>Drawn by</div><div>CB</div><div>Status</div><div>Rev</div><div>Development Application</div><div>DA-250-020</div><div>U</div><div>GA Elevations</div><div>Lawson Street_West Elevation</div><div>Scale</div><div>1:200 @A1, 50% @ A3</div><div>Project No.</div><div>16107</div><div>Drawn by</div><div>CB</div><div>Status</div><div>Rev</div><div>Development Application</div><div>DA-250-020</div><div>U</div><div>GA Elevations</div><div>Lawson Street_West Elevation</div><div>Scale</div><div>1:200 @A1, 50% @ A3</div><div>Project No.</div><div>16107</div><div>Drawn by</div><div>CB</div><div>Status</div><div>Rev</div><div>Development Application</div><div>DA-250-020</div><div>U</div><div>GA Elevations</div><div>Lawson Street_West Elevation</div><div>Scale</div><div>1:200 @A1, 50% @ A3</div><div>Project No.</div><div>16107</div><div>Drawn by</div><div>CB</div><div>Status</div><div>Rev</div><div>Development Application</div><div>DA-250-020</div><div>U</div><div>GA Elevations</div><div>Lawson Street_West Elevation</div><div>Scale</div><div>1:200 @A1, 50% @ A3</div><div>Project No.</div><div>16107</div><div>Drawn by</div><div>CB</div><div>Status</div><div>Rev</div><div>Development Application</div><div>DA-250-020</div><div>U</div><div>GA Elevations</div><div>Lawson Street_West Elevation</div><div>Scale</div><div>1:200 @A1, 50% @ A3</div><div>Project No.</div><div>16107</div><div>Drawn by</div><div>CB</div><div>Status</div><div>Rev</div><div>Development Application</div><div>DA-250-020</div><div>U</div><div>GA Elevations</div><div>Lawson Street_West Elevation</div><div>Scale</div><div>1:200 @A1, 50% @ A3</div><div>Project No.</div><div>16107</div><div>Drawn by</div><div>CB</div><div>Status</div><div>Rev</div><div>Development Application</div><div>DA-250-020</div>&lt;</div>	Rev	Date	Approved by	Revision Notes	R	07/06/17	DS	Issue for DA Submission - DRP	S	09/06/17	DS	Issue for DA Submission - DoP	T	12/12/17	DS	Issue for Information	U	19/04/18	DS	Amended DA Submission - DoP	Project Title	Col James - Student Accommodation	83-123 Eveleigh Street Redfern NSW 2016 Australia		Drawing Title	GA Elevations	Lawson Street_West Elevation		Scale	1:200 @A1, 50% @ A3	Project No.	16107	Drawn by	CB	Status	Rev	Development Application	DA-250-020	U	
Rev	Date	Approved by	Revision Notes																																					
R	07/06/17	DS	Issue for DA Submission - DRP																																					
S	09/06/17	DS	Issue for DA Submission - DoP																																					
T	12/12/17	DS	Issue for Information																																					
U	19/04/18	DS	Amended DA Submission - DoP																																					
Project Title	Col James - Student Accommodation																																							
83-123 Eveleigh Street Redfern NSW 2016 Australia																																								
Drawing Title	GA Elevations																																							
Lawson Street_West Elevation																																								
Scale	1:200 @A1, 50% @ A3																																							
Project No.	16107																																							
Drawn by	CB																																							
Status	Rev																																							
Development Application	DA-250-020																																							
U																																								

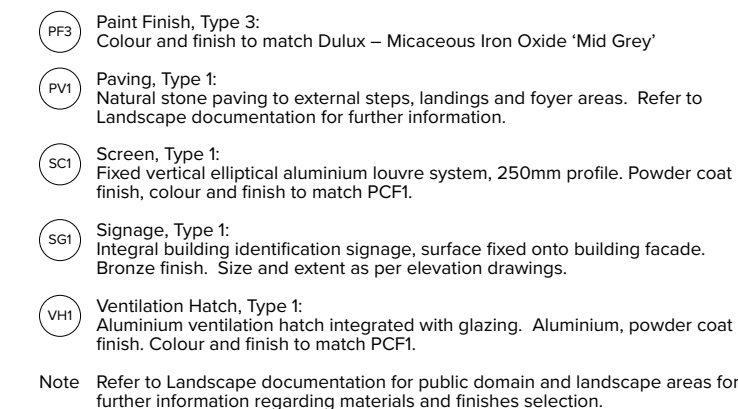
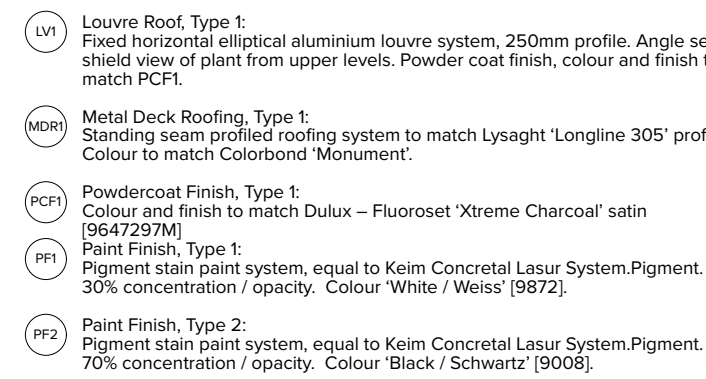
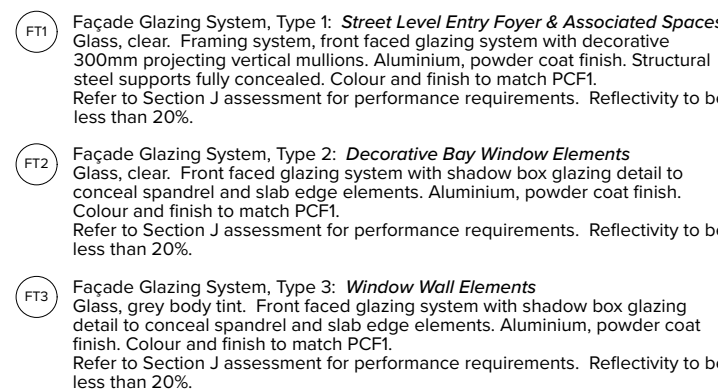
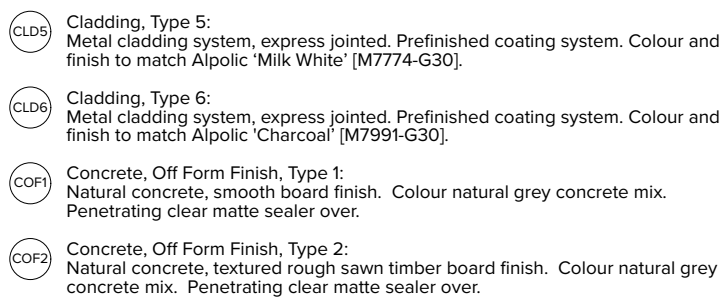


## REDFERN TRAIN STATION

**Legend**

- (ART) Art Feature, Type 1:  
Painted soffits to main entry lobby.
- (ART) Art Feature, Type 2:  
Embossed feature symbol into precast panel.
- (ART) Art Feature, Type 3:  
Existing art wall, preserved.
- (AWF) Awaiting, Type 1:  
Cold steel awning with decorative motif laser cut into leading edge. Paint finish equal to PF3.
- (BAL) Balustrade, Type 1:  
Cold steel balustrade with decorative motif laser cut into leading edge. Paint finish equal to PF3.
- (BAL) Balustrade, Type 2:  
Powder coated 100 x 100 x 10 steel balustrade, no top rail. Balustrades angled at 90°. Powder coat finish, colour and finish to match PCF1.
- (BAL) Balustrade, Type 2:  
Powder coated 100 x 100 x 10 steel balustrade system with separate steel flat bar handrail / stanchion support behind. Colour and finish to match PCF1.

DLCQS Quality Endorsed Company ISO 9001:2008, Registration Number 20476  
Nominated Architect: Nicholas Turner 6665, AEN 86 084 084 911



Note Refer to Landscape documentation for public domain and landscape areas for further information regarding materials and finishes selection.

Project Title
<b>Col James - Student Accommodation</b> 83-123 Eveleigh Street Redfern NSW 2016 Australia
Drawing Title
GA Elevations Railway Line_South Elevation

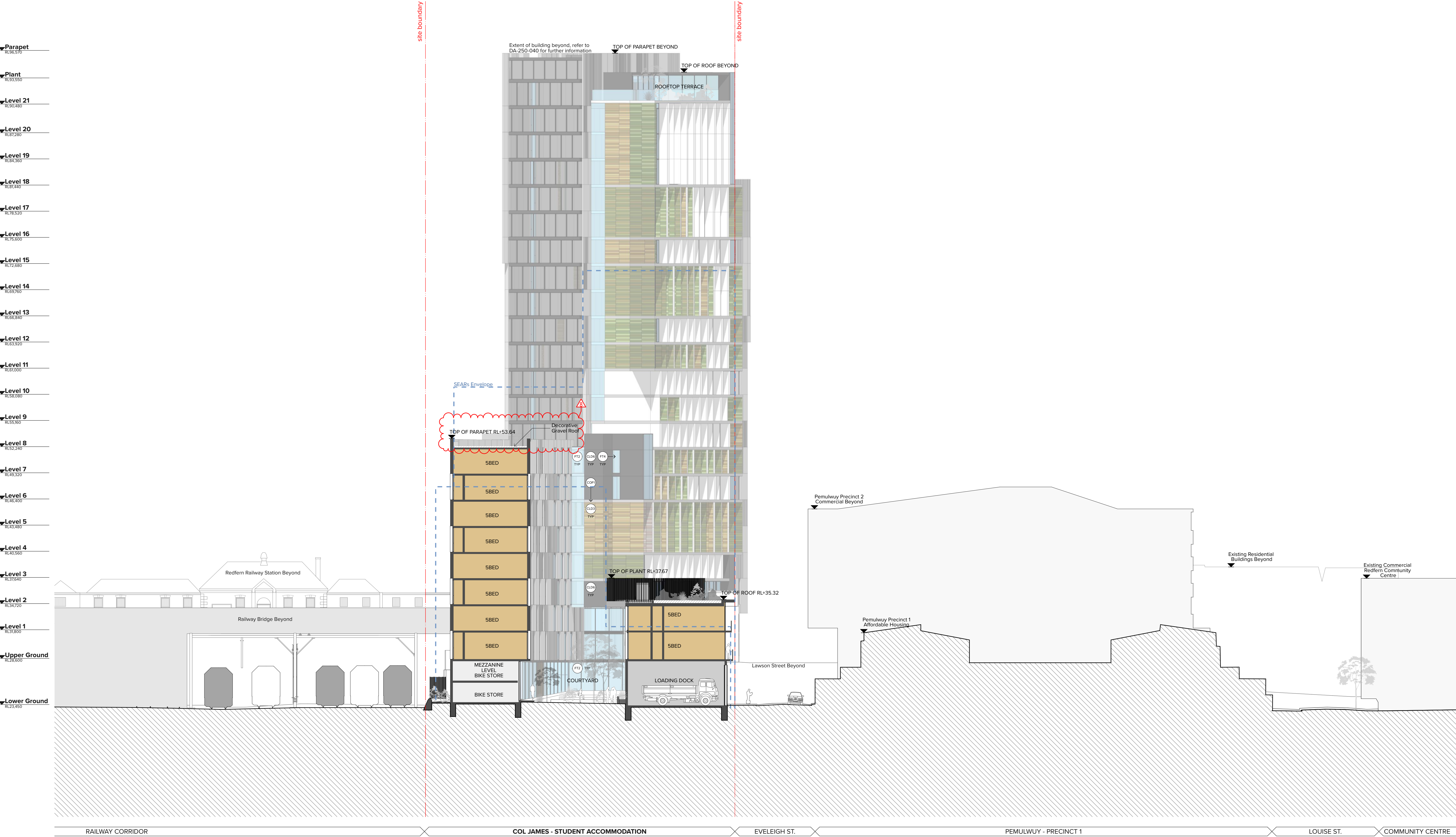
**TURNER** Level 7 **ONE** Oxford Street T +61 2 8668 0000  
Darlinghurst NSW 2010 F +61 2 8668 0088  
AUSTRALIA turnerstudio.com.au





ART1	ART Feature, Type 1 Painted soffits to main entry lobby.	CL11	Cladding, Type 5 Stone cladding system, random length stretcher bond. Finish split face and/or exfoliate finish. Coursing height varies between 75 and 150mm. Random stone sections and hawkeyes/sandstone. Port Fairy Bluestone and off white or grey speckled granite.	CL15	Cladding, Type 5 Glass, clear. Framing system, front faced glazing system with decorative 300mm projecting vertical mullions. Aluminium, powder coat finish. Structural steel supports fully concealed. Colour and finish to match PCF1.	CP1	Concrete, Precast, Type 1 Decorative finish concrete wall elements. 'Colour 'lite & brite' concrete mix with white oxide pigment added. Penetrating clear matte sealer over.	FT1	Glazing Glazing System, Type 1: <b>Street Level Entry Foyle &amp; Associates Spaces</b> Glass, clear. Framing system, front faced glazing system with decorative 300mm projecting vertical mullions. Aluminium, powder coat finish. Structural steel supports fully concealed. Colour and finish to match PCF1. Refer to Section J assessment for performance requirements. Reflectivity to be less than 20%.	FT4	Glazing Glazing System, Type 4: <b>Infill Windows</b> Glass, clear. Framing system, aluminium, powder coat finish. Mechanical louvers integrated to frame system. Matching aluminium cover plates to conceal slab and glass edge details. Refer to Section J assessment for performance requirements. Reflectivity to be less than 20%.	LV1	Louvre Roof, Type 1 Fixed horizontal elliptical aluminium louvre system, 250mm profile. Angle set to shield view of panel from upper levels. Powder coat finish, colour and finish to match PCF1.	PS3	Paint Finish, Type 3 Paint Finish, Type 3 to match Dulux - Micaeous Iron Oxide 'Mid Grey'.											
ART2	ART Feature, Type 2 Embossed feature symbol into precast panel.	CL12	Cladding, Type 6 Stone cladding system, pressed jointed. Prefinished coating system. Colour and finish to match Alpolic 'Milk White' [M7774-G30].	CL16	Cladding, Type 6 Decorative finish concrete wall elements, vertical square edged profiled form liner finish, 30mm spacing, 15mm depth edge to Becraft 2771 'Tiger' profile. Colour equal to CP1. Penetrating clear matte sealer over.	CP2	Concrete, Precast, Type 2 Decorative finish concrete wall elements, vertical square edged profiled form liner finish, 30mm spacing, 15mm depth edge to Becraft 2771 'Tiger' profile. Colour equal to CP1. Penetrating clear matte sealer over.	FT2	Glazing Glazing System, Type 2: <b>Decorative Bay Window Elements</b> Glass, clear. Front faced glazing system with shadow box glazing detail to conceal spandrel and slab edge elements. Aluminium, powder coat finish. Colour and finish to match PCF1.	FT5	Glazing Glazing System, Type 5: <b>Infill Windows</b> Glass, grey body tint. Framing system, aluminium, with decorative 150mm vertical mullions. Mechanical louvers integrated to frame system. Matching aluminium cover plates to conceal slab and glass edge details. Refer to Section J assessment for performance requirements. Reflectivity to be less than 20%.	MS1	Metal Deck Roofing, Type 1 Standing seam profile roofing system to match Lysaght 'Longline 305' profile. Colour to match concrete document.	SC1	Screen, Type 1 Fixed vertical elliptical aluminium louvre system, 250mm profile. Powder coat finish, colour and finish to match PCF1.											
ART3	ART Feature, Type 3 Sanding art wall, preserved.	CL13	Cladding, Type 2 Timber cladding system, vertical V jointed 90mm wide. Service doors integrated to match. Timber equal to Spotted Gum in appearance. Natural finish with pigmented oil of finish.	CL17	Concrete, Off Form Finish, Type 3 Decorative finish concrete wall elements, vertical square edged profiled form liner finish, 30mm spacing, 15mm depth edge to Becraft 2771 'Tiger' profile. Colour equal to CP1. Penetrating clear matte sealer over.	CP3	Concrete, Off Form Finish, Type 3 Decorative finish concrete wall elements, vertical square edged profiled form liner finish, 30mm spacing, 15mm depth edge to Becraft 2771 'Tiger' profile. Colour equal to CP1. Penetrating clear matte sealer over.	FT3	Glazing Glazing System, Type 3: <b>Window Wall Elements</b> Glass, clear. Front faced glazing system with shadow box glazing detail to conceal spandrel and slab edge elements. Aluminium, powder coat finish. Colour and finish to match PCF1. Refer to Section J assessment for performance requirements. Reflectivity to be less than 20%.	FT6	Glazing Glazing System, Type 6: <b>Decorative Bay Window Elements</b> Glass, grey body tint. Framing system, aluminium, with decorative 150mm vertical mullions. Mechanical louvers integrated to frame system. Matching aluminium cover plates to conceal slab and glass edge details. Refer to Section J assessment for performance requirements. Reflectivity to be less than 20%.	PC1	Paint Finish, Type 1 Paint Finish, Type 1 to match Dulux - Fluoroest 'Atrium Charcoal' satin [964-292M].	SI1	Signage, Type 1 Integral building identification signage, surface fixed onto building facade. Refer to Section J assessment for performance requirements. Reflectivity to be less than 20%.											
BAU1	Balustrade, Type 1 Vertical 100 x 100 steel balustrade, no top rail. Balustrades angled at 90°. Powder coat finish, colour and finish to match PCF1.	CL14	Cladding, Type 4 Metal cladding system, pressed jointed, with concealed essential service doors and louvers. Prefinished coating system. Colour and finish to match Alpolic 'Steel Grey' [M254-G30].	CL18	Concrete, Off Form Finish, Type 4 Decorative finish concrete wall elements, vertical square edged profiled form liner finish, 30mm spacing, 15mm depth edge to Becraft 2771 'Tiger' profile. Colour equal to CP1. Penetrating clear matte sealer over.	CP4	Concrete, Off Form Finish, Type 4 Decorative finish concrete wall elements, vertical square edged profiled form liner finish, 30mm spacing, 15mm depth edge to Becraft 2771 'Tiger' profile. Colour equal to CP1. Penetrating clear matte sealer over.	FT4	Glazing Glazing System, Type 4: <b>Window Wall Elements</b> Glass, clear. Front faced glazing system with shadow box glazing detail to conceal spandrel and slab edge elements. Aluminium, powder coat finish. Colour and finish to match PCF1. Refer to Section J assessment for performance requirements. Reflectivity to be less than 20%.	GT1	Gate, Type 1 Decorative timber and steel entry gate. Timber equal to CLD2 material and finish. Steel, paint finish, equal to PF3.	SP1	Paint Finish, Type 1 Paint Finish, Type 1 to match Dulux - Fluoroest 'Atrium Charcoal' satin [964-292M].	SH1	Shading, Type 1 Integral building identification signage, surface fixed onto building facade. Refer to Section J assessment for performance requirements. Reflectivity to be less than 20%.											
BAU2	Balustrade, Type 2 Balustrade support behind concrete wall with separate steel flat bar handrail / stainless support behind. Colour and finish to match PCF1.	CL19	Cladding, Type 4 Metal cladding system, pressed jointed, with concealed essential service doors and louvers. Prefinished coating system. Colour and finish to match Alpolic 'Steel Grey' [M254-G30].	CL19	Concrete, Off Form Finish, Type 4 Decorative finish concrete wall elements, vertical square edged profiled form liner finish, 30mm spacing, 15mm depth edge to Becraft 2771 'Tiger' profile. Colour equal to CP1. Penetrating clear matte sealer over.	CP5	Concrete, Off Form Finish, Type 4 Decorative finish concrete wall elements, vertical square edged profiled form liner finish, 30mm spacing, 15mm depth edge to Becraft 2771 'Tiger' profile. Colour equal to CP1. Penetrating clear matte sealer over.	FT5	Glazing Glazing System, Type 5: <b>Window Wall Elements</b> Glass, clear. Front faced glazing system with shadow box glazing detail to conceal spandrel and slab edge elements. Aluminium, powder coat finish. Colour and finish to match PCF1. Refer to Section J assessment for performance requirements. Reflectivity to be less than 20%.	HT1	Handrail, Type 1 Decorative handrail to street level entrance. 32mm diam. steel, bronze finish.	SP2	Paint Finish, Type 2 Paint Finish, Type 2 to match Dulux - Fluoroest 'Atrium Charcoal' satin [964-292M].	VH1	Ventilation Hatch, Type 1 Aluminium ventilation hatch integrated with glazing. Aluminium, powder coat finish. Colour and finish to match PCF1.											
													Note	Refer to Landscape documentation for public domain and landscape areas for further information regarding materials and finishes selection.												

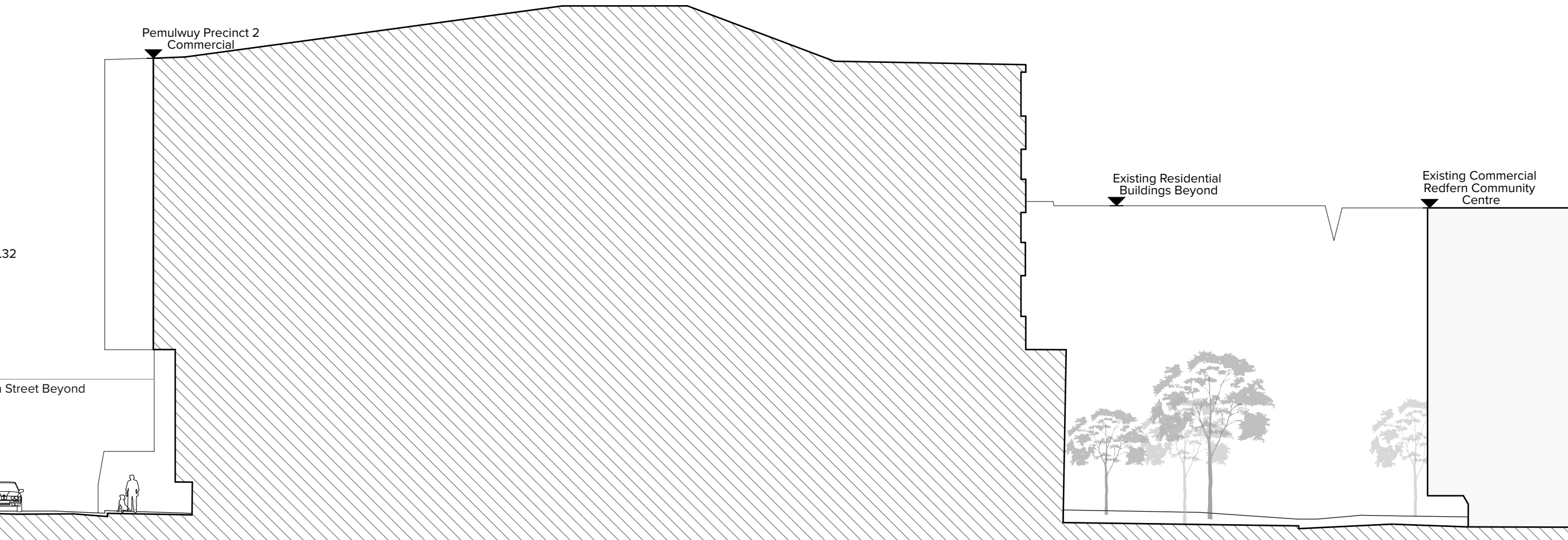
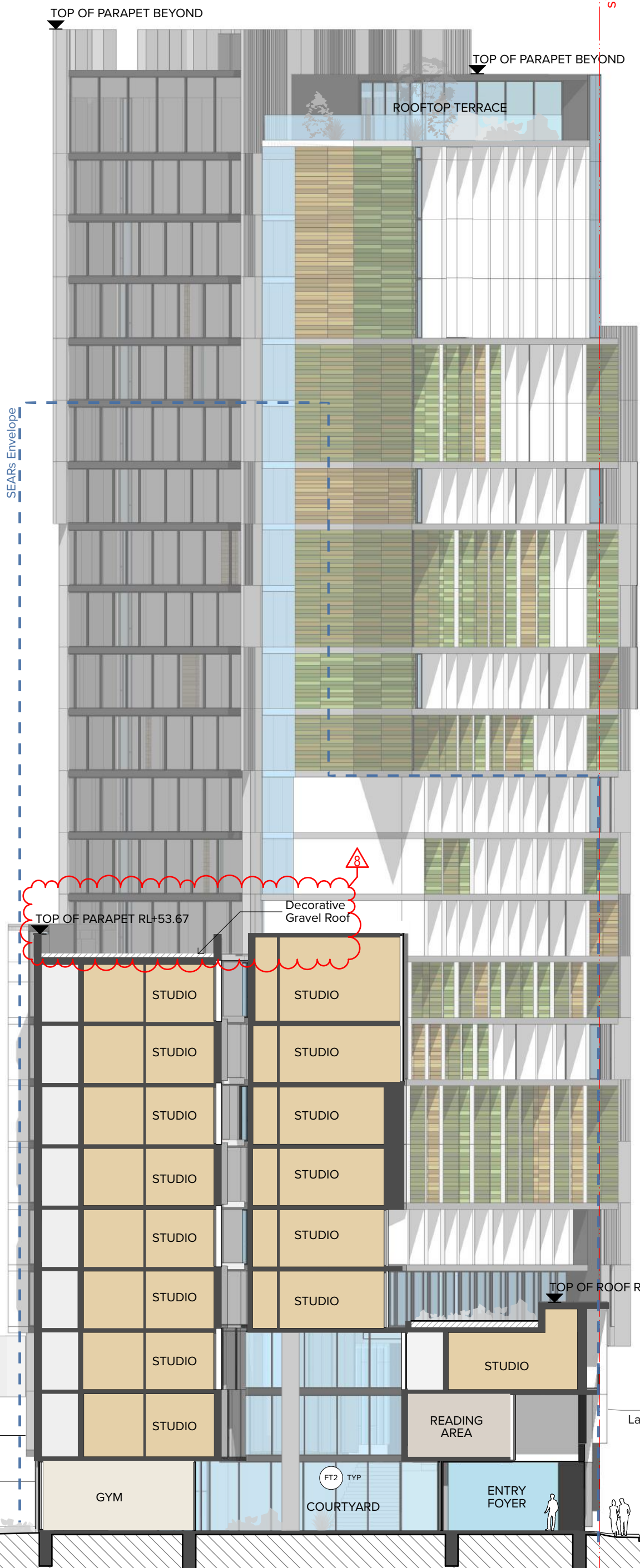
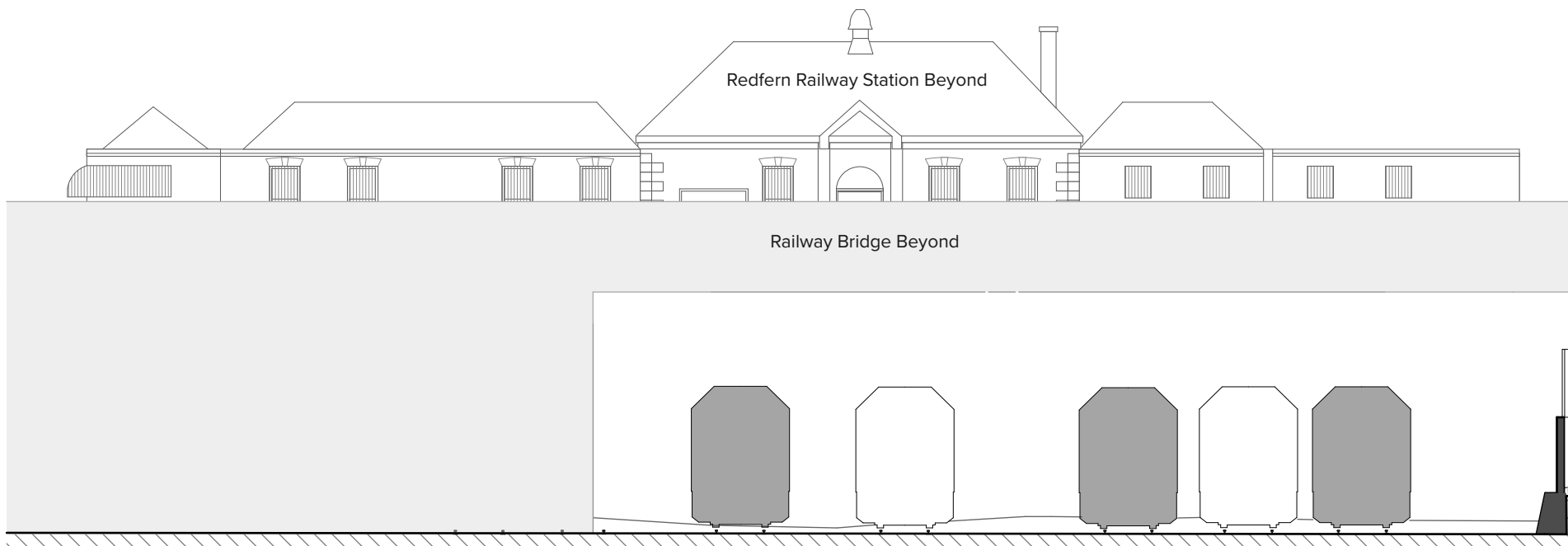




Legend	CLD1	CLD2	CLD3	CLD4	CLD5	CLD6	CLD7	CLD8	CLD9	CLD10	CLD11	CLD12	CLD13	CLD14	CLD15	CLD16	CLD17	CLD18	CLD19	CLD20	CLD21	CLD22	CLD23	CLD24	CLD25	CLD26	CLD27	CLD28	CLD29	CLD30	CLD31	CLD32	CLD33	CLD34	CLD35	CLD36	CLD37	CLD38	CLD39	CLD40	CLD41	CLD42	CLD43	CLD44	CLD45	CLD46	CLD47	CLD48	CLD49	CLD50	CLD51	CLD52	CLD53	CLD54	CLD55	CLD56	CLD57	CLD58	CLD59	CLD60	CLD61	CLD62	CLD63	CLD64	CLD65	CLD66	CLD67	CLD68	CLD69	CLD70	CLD71	CLD72	CLD73	CLD74	CLD75	CLD76	CLD77	CLD78	CLD79	CLD80	CLD81	CLD82	CLD83	CLD84	CLD85	CLD86	CLD87	CLD88	CLD89	CLD90	CLD91	CLD92	CLD93	CLD94	CLD95	CLD96	CLD97	CLD98	CLD99	CLD100	CLD101	CLD102	CLD103	CLD104	CLD105	CLD106	CLD107	CLD108	CLD109	CLD110	CLD111	CLD112	CLD113	CLD114	CLD115	CLD116	CLD117	CLD118	CLD119	CLD120	CLD121	CLD122	CLD123	CLD124	CLD125	CLD126	CLD127	CLD128	CLD129	CLD130	CLD131	CLD132	CLD133	CLD134	CLD135	CLD136	CLD137	CLD138	CLD139	CLD140	CLD141	CLD142	CLD143	CLD144	CLD145	CLD146	CLD147	CLD148	CLD149	CLD150	CLD151	CLD152	CLD153	CLD154	CLD155	CLD156	CLD157	CLD158	CLD159	CLD160	CLD161	CLD162	CLD163	CLD164	CLD165	CLD166	CLD167	CLD168	CLD169	CLD170	CLD171	CLD172	CLD173	CLD174	CLD175	CLD176	CLD177	CLD178	CLD179	CLD180	CLD181	CLD182	CLD183	CLD184	CLD185	CLD186	CLD187	CLD188	CLD189	CLD190	CLD191	CLD192	CLD193	CLD194	CLD195	CLD196	CLD197	CLD198	CLD199	CLD200	CLD201	CLD202	CLD203	CLD204	CLD205	CLD206	CLD207	CLD208	CLD209	CLD210	CLD211	CLD212	CLD213	CLD214	CLD215	CLD216	CLD217	CLD218	CLD219	CLD220	CLD221	CLD222	CLD223	CLD224	CLD225	CLD226	CLD227	CLD228	CLD229	CLD230	CLD231	CLD232	CLD233	CLD234	CLD235	CLD236	CLD237	CLD238	CLD239	CLD240	CLD241	CLD242	CLD243	CLD244	CLD245	CLD246	CLD247	CLD248	CLD249	CLD250	CLD251	CLD252	CLD253	CLD254	CLD255	CLD256	CLD257	CLD258	CLD259	CLD260	CLD261	CLD262	CLD263	CLD264	CLD265	CLD266	CLD267	CLD268	CLD269	CLD270	CLD271	CLD272	CLD273	CLD274	CLD275	CLD276	CLD277	CLD278	CLD279	CLD280	CLD281	CLD282	CLD283	CLD284	CLD285	CLD286	CLD287	CLD288	CLD289	CLD290	CLD291	CLD292	CLD293	CLD294	CLD295	CLD296	CLD297	CLD298	CLD299	CLD300	CLD301	CLD302	CLD303	CLD304	CLD305	CLD306	CLD307	CLD308	CLD309	CLD310	CLD311	CLD312	CLD313	CLD314	CLD315	CLD316	CLD317	CLD318	CLD319	CLD320	CLD321	CLD322	CLD323	CLD324	CLD325	CLD326	CLD327	CLD328	CLD329	CLD330	CLD331	CLD332	CLD333	CLD334	CLD335	CLD336	CLD337	CLD338	CLD339	CLD340	CLD341	CLD342	CLD343	CLD344	CLD345	CLD346	CLD347	CLD348	CLD349	CLD350	CLD351	CLD352	CLD353	CLD354	CLD355	CLD356	CLD357	CLD358	CLD359	CLD360	CLD361	CLD362	CLD363	CLD364	CLD365	CLD366	CLD367	CLD368	CLD369	CLD370	CLD371	CLD372	CLD373	CLD374	CLD375	CLD376	CLD377	CLD378	CLD379	CLD380	CLD381	CLD382	CLD383	CLD384	CLD385	CLD386	CLD387	CLD388	CLD389	CLD390	CLD391	CLD392	CLD393	CLD394	CLD395	CLD396	CLD397	CLD398	CLD399	CLD400	CLD401	CLD402	CLD403	CLD404	CLD405	CLD406	CLD407	CLD408	CLD409	CLD410	CLD411	CLD412	CLD413	CLD414	CLD415	CLD416	CLD417	CLD418	CLD419	CLD420	CLD421	CLD422	CLD423	CLD424	CLD425	CLD426	CLD427	CLD428	CLD429	CLD430	CLD431	CLD432	CLD433	CLD434	CLD435	CLD436	CLD437	CLD438	CLD439	CLD440	CLD441	CLD442	CLD443	CLD444	CLD445	CLD446	CLD447	CLD448	CLD449	CLD450	CLD451	CLD452	CLD453	CLD454	CLD455	CLD456	CLD457	CLD458	CLD459	CLD460	CLD461	CLD462	CLD463	CLD464	CLD465	CLD466	CLD467	CLD468	CLD469	CLD470	CLD471	CLD472	CLD473	CLD474	CLD475	CLD476	CLD477	CLD478	CLD479	CLD480	CLD481	CLD482	CLD483	CLD484	CLD485	CLD486	CLD487	CLD488	CLD489	CLD490	CLD491	CLD492	CLD493	CLD494	CLD495	CLD496	CLD497	CLD498	CLD499	CLD500	CLD501	CLD502	CLD503	CLD504	CLD505	CLD506	CLD507	CLD508	CLD509	CLD510	CLD511	CLD512	CLD513	CLD514	CLD515	CLD516	CLD517	CLD518	CLD519	CLD520	CLD521	CLD522	CLD523	CLD524	CLD525	CLD526	CLD527	CLD528	CLD529	CLD530	CLD531	CLD532	CLD533	CLD534	CLD535	CLD536	CLD537	CLD538	CLD539	CLD540	CLD541	CLD542	CLD543	CLD544	CLD545	CLD546	CLD547	CLD548	CLD549	CLD550	CLD551	CLD552	CLD553	CLD554	CLD555	CLD556	CLD557	CLD558	CLD559	CLD560	CLD561	CLD562	CLD563	CLD564	CLD565	CLD566	CLD567	CLD568	CLD569	CLD570	CLD571	CLD572	CLD573	CLD574	CLD575	CLD576	CLD577	CLD578	CLD579	CLD580	CLD581	CLD582	CLD583	CLD584	CLD585	CLD586	CLD587	CLD588	CLD589	CLD590	CLD591	CLD592	CLD593	CLD594	CLD595	CLD596	CLD597	CLD598	CLD599	CLD600	CLD601	CLD602	CLD603	CLD604	CLD605	CLD606	CLD607	CLD608	CLD609	CLD610	CLD611	CLD612	CLD613	CLD614	CLD615	CLD616	CLD617	CLD618	CLD619	CLD620	CLD621	CLD622	CLD623	CLD624	CLD625	CLD626	CLD627	CLD628	CLD629	CLD630	CLD631	CLD632	CLD633	CLD634	CLD635	CLD636	CLD637	CLD638	CLD639	CLD640	CLD641	CLD642	CLD643	CLD644	CLD645	CLD646	CLD647	CLD648	CLD649	CLD650	CLD651	CLD652	CLD653	CLD654	CLD655	CLD656	CLD657	CLD658	CLD659	CLD660	CLD661	CLD662	CLD663	CLD664	CLD665	CLD666	CLD667	CLD668	CLD669	CLD670	CLD671	CLD672	CLD673	CLD674	CLD675	CLD676	CLD677	CLD678	CLD679	CLD680	CLD681	CLD682	CLD683	CLD684	CLD685	CLD686	CLD687	CLD688	CLD689	CLD690	CLD691	CLD692	CLD693	CLD694	CLD695	CLD696	CLD697	CLD698	CLD699	CLD700	CLD701	CLD702	CLD703	CLD704	CLD705	CLD706	CLD707	CLD708	CLD709	CLD710	CLD711	CLD712	CLD713	CLD714	CLD715	CLD716	CLD717	CLD718	CLD719	CLD720	CLD721	CLD722	CLD723	CLD724	CLD725	CLD726	CLD727	CLD728	CLD729	CLD730	CLD731	CLD732	CLD733	CLD734	CLD735	CLD736	CLD737	CLD738	CLD739	CLD740	CLD741	CLD742	CLD743	CLD744	CLD745	CLD746	CLD747	CLD748	CLD749	CLD750	CLD751	CLD752	CLD753	CLD754	CLD755	CLD756	CLD757	CLD758	CLD759	CLD760	CLD761	CLD762	CLD763	CLD764	CLD765	CLD766	CLD767	CLD768	CLD769	CLD770	CLD771	CLD772	CLD773	CLD774	CLD775	CLD776	CLD777	CLD778	CLD779	CLD780	CLD781	CLD782	CLD783	CLD784	CLD785	CLD786	CLD787	CLD788	CLD789	CLD790	CLD791	CLD792	CLD793	CLD794	CLD795	CLD796	CLD797	CLD798	CLD799	CLD800	CLD801	CLD802	CLD803	CLD804	CLD805	CLD806	CLD807	CLD808	CLD809	CLD810	CLD811	CLD812	CLD813	CLD814	CLD815	CLD816	CLD817	CLD818	CLD819	CLD820	CLD821	CLD822	CLD823	CLD824	CLD825	CLD826	CLD827	CLD828	CLD829	CLD830	CLD831	CLD832	CLD833	CLD834	CLD835	CLD836	CLD837	CLD838	CLD839	CLD840	CLD841	CLD842	CLD843	CLD844	CLD845	CLD846	CLD847	CLD848	CLD849	CLD850	CLD851	CLD852	CLD853	CLD854	CLD855	CLD856	CLD857	CLD858	CLD859	CLD860	CLD861	CLD862	CLD863	CLD864	CLD865	CLD866	CLD867	CLD868	CLD869	CLD870	CLD871	CLD872	CLD873	CLD874	CLD875	CLD876	CLD877	CLD878	CLD879	CLD880	CLD881	CLD882	CLD883	CLD884	CLD885	CLD886	CLD887	CLD888	CLD889	CLD890	CLD891	CLD892	CLD893	CLD894	CLD895	CLD896	CLD897	CLD898	CLD899	CLD900	CLD901	CLD902	CLD903	CLD904	CLD905	CLD906	CLD907	CLD908	CLD909	CLD910	CLD911	CLD912	CLD913	CLD914	CLD915	CLD916	CLD917	CLD918	CLD919	CLD920	CLD921	CLD922	CLD923	CLD924	CLD925	CLD926	CLD927	CLD928	CLD929	CLD930	CLD931	CLD932	CLD933	CLD934	CLD935	CLD936	CLD937	CLD938	CLD939	CLD940	CLD941	CLD942	CLD943	CLD944	CLD945	CLD946	CLD947	CLD948	CLD949	CLD950	CLD951	CLD952	CLD953	CLD954	CLD955	CLD956	CLD957	CLD958	CLD959	CLD960	CLD961	CLD962	CLD963	CLD964	CLD965	CLD966	CLD967	CLD968	CLD969	CLD970	CLD971	CLD972	CLD973	CLD974	CLD975	CLD976	CLD977	CLD978	CLD979	CLD980	CLD981	CLD982	CLD983	CLD984	CLD985	CLD986	CLD987	CLD988	CLD989	CLD990	CLD991	CLD992	CLD993	CLD994	CLD995	CLD996	CLD997	CLD998	CLD999	CLD1000	CLD1001	CLD1002	CLD1003	CLD1004	CLD1005	CLD1006	CLD1007	CLD1008	CLD1009	CLD1010	CLD1011	CLD1012	CLD1013	CLD1014	CLD1015	CLD1016	CLD1017	CLD1018	CLD1019	CLD1020	CLD1021	CLD1022	CLD1023	CLD1024	CLD1025	CLD1026	CLD1027	CLD1028	CLD1029	CLD1030	CLD1031	CLD1032	CLD1033	CLD1034	CLD1035	CLD1036	CLD1037	CLD1038	CLD1039	CLD1040	CLD1041	CLD1042	CLD1043	CLD1044	CLD1045	CLD1046	CLD1047	CLD1048	CLD1049	CLD1050	CLD1051	CLD1052	CLD1053	CLD1054	CLD1055	CLD1056	CLD1057	CLD1058	CLD1059	CLD1060	CLD1061	CLD1062	CLD1063	CLD1064	CLD1065	CLD1066	CLD1067	CLD1068	CLD1069	CLD1070	CLD1071	CLD1072	CLD1073	CLD1074	CLD1075	CLD1076	CLD1077	CLD1078	CLD1079	CLD1080	CLD1081	CLD1082	CLD1083	CLD1084	CLD1085	CLD1086	CLD1087	CLD1088	CLD1089	CLD1090	CLD1091	CLD1092	CLD1093	CLD1094	CLD1095	CLD1096	CLD1097	CLD1098	CLD1099	CLD1100	CLD1101	CLD1102	CLD1103	CLD1104	CLD1105	CLD1106	CLD1107	CLD1108	CLD1109	CLD1110	CLD1111	CLD1112	CLD1113	CLD1114	CLD1115	CLD1116	CLD1117	CLD1118	CLD1119	CLD1120	CLD1121	CLD1122	CLD1123	CLD1124	CLD1125	CLD1126	CLD1127	CLD1128	CLD1129	CLD1130	CLD1131	CLD1132	CLD1133	CLD1134	CLD1135	CLD1136	CLD1137	CLD1138	CLD1139	CLD1140	CLD1141	CLD1142	CLD1143	CLD1144	CLD1145	CLD1146	CLD1147	CLD1148	CLD1149	CLD1150	CLD1151	CLD1152	CLD1153	CLD1154	CLD1155	CLD1156	CLD1157	CLD1158	CLD1159	CLD1160	CLD1161	CLD1162	CLD1163	CLD1164	CLD1165	CLD1166	CLD1167	CLD1168	CLD1169	CLD1170	CLD1171	CLD1172	CLD1173	CLD1174	CLD1175	CLD1176	CLD1177	CLD1178	CLD1179	CLD1180	CLD1181	CLD1182	CLD1183	CLD1184	CLD1185	CLD1186	CLD1187	CLD1188	CLD1189	CLD1190	CLD1191	CLD1192	CLD1193	CLD1194	CLD1195	CLD1196	CLD1197	CLD1198	CLD1199	CLD1200	CLD1201	CLD120
--------	------	------	------	------	------	------	------	------	------	-------	-------	-------	-------	-------	-------	-------	-------	-------	-------	-------	-------	-------	-------	-------	-------	-------	-------	-------	-------	-------	-------	-------	-------	-------	-------	-------	-------	-------	-------	-------	-------	-------	-------	-------	-------	-------	-------	-------	-------	-------	-------	-------	-------	-------	-------	-------	-------	-------	-------	-------	-------	-------	-------	-------	-------	-------	-------	-------	-------	-------	-------	-------	-------	-------	-------	-------	-------	-------	-------	-------	-------	-------	-------	-------	-------	-------	-------	-------	-------	-------	-------	-------	-------	-------	-------	-------	-------	-------	-------	--------	--------	--------	--------	--------	--------	--------	--------	--------	--------	--------	--------	--------	--------	--------	--------	--------	--------	--------	--------	--------	--------	--------	--------	--------	--------	--------	--------	--------	--------	--------	--------	--------	--------	--------	--------	--------	--------	--------	--------	--------	--------	--------	--------	--------	--------	--------	--------	--------	--------	--------	--------	--------	--------	--------	--------	--------	--------	--------	--------	--------	--------	--------	--------	--------	--------	--------	--------	--------	--------	--------	--------	--------	--------	--------	--------	--------	--------	--------	--------	--------	--------	--------	--------	--------	--------	--------	--------	--------	--------	--------	--------	--------	--------	--------	--------	--------	--------	--------	--------	--------	--------	--------	--------	--------	--------	--------	--------	--------	--------	--------	--------	--------	--------	--------	--------	--------	--------	--------	--------	--------	--------	--------	--------	--------	--------	--------	--------	--------	--------	--------	--------	--------	--------	--------	--------	--------	--------	--------	--------	--------	--------	--------	--------	--------	--------	--------	--------	--------	--------	--------	--------	--------	--------	--------	--------	--------	--------	--------	--------	--------	--------	--------	--------	--------	--------	--------	--------	--------	--------	--------	--------	--------	--------	--------	--------	--------	--------	--------	--------	--------	--------	--------	--------	--------	--------	--------	--------	--------	--------	--------	--------	--------	--------	--------	--------	--------	--------	--------	--------	--------	--------	--------	--------	--------	--------	--------	--------	--------	--------	--------	--------	--------	--------	--------	--------	--------	--------	--------	--------	--------	--------	--------	--------	--------	--------	--------	--------	--------	--------	--------	--------	--------	--------	--------	--------	--------	--------	--------	--------	--------	--------	--------	--------	--------	--------	--------	--------	--------	--------	--------	--------	--------	--------	--------	--------	--------	--------	--------	--------	--------	--------	--------	--------	--------	--------	--------	--------	--------	--------	--------	--------	--------	--------	--------	--------	--------	--------	--------	--------	--------	--------	--------	--------	--------	--------	--------	--------	--------	--------	--------	--------	--------	--------	--------	--------	--------	--------	--------	--------	--------	--------	--------	--------	--------	--------	--------	--------	--------	--------	--------	--------	--------	--------	--------	--------	--------	--------	--------	--------	--------	--------	--------	--------	--------	--------	--------	--------	--------	--------	--------	--------	--------	--------	--------	--------	--------	--------	--------	--------	--------	--------	--------	--------	--------	--------	--------	--------	--------	--------	--------	--------	--------	--------	--------	--------	--------	--------	--------	--------	--------	--------	--------	--------	--------	--------	--------	--------	--------	--------	--------	--------	--------	--------	--------	--------	--------	--------	--------	--------	--------	--------	--------	--------	--------	--------	--------	--------	--------	--------	--------	--------	--------	--------	--------	--------	--------	--------	--------	--------	--------	--------	--------	--------	--------	--------	--------	--------	--------	--------	--------	--------	--------	--------	--------	--------	--------	--------	--------	--------	--------	--------	--------	--------	--------	--------	--------	--------	--------	--------	--------	--------	--------	--------	--------	--------	--------	--------	--------	--------	--------	--------	--------	--------	--------	--------	--------	--------	--------	--------	--------	--------	--------	--------	--------	--------	--------	--------	--------	--------	--------	--------	--------	--------	--------	--------	--------	--------	--------	--------	--------	--------	--------	--------	--------	--------	--------	--------	--------	--------	--------	--------	--------	--------	--------	--------	--------	--------	--------	--------	--------	--------	--------	--------	--------	--------	--------	--------	--------	--------	--------	--------	--------	--------	--------	--------	--------	--------	--------	--------	--------	--------	--------	--------	--------	--------	--------	--------	--------	--------	--------	--------	--------	--------	--------	--------	--------	--------	--------	--------	--------	--------	--------	--------	--------	--------	--------	--------	--------	--------	--------	--------	--------	--------	--------	--------	--------	--------	--------	--------	--------	--------	--------	--------	--------	--------	--------	--------	--------	--------	--------	--------	--------	--------	--------	--------	--------	--------	--------	--------	--------	--------	--------	--------	--------	--------	--------	--------	--------	--------	--------	--------	--------	--------	--------	--------	--------	--------	--------	--------	--------	--------	--------	--------	--------	--------	--------	--------	--------	--------	--------	--------	--------	--------	--------	--------	--------	--------	--------	--------	--------	--------	--------	--------	--------	--------	--------	--------	--------	--------	--------	--------	--------	--------	--------	--------	--------	--------	--------	--------	--------	--------	--------	--------	--------	--------	--------	--------	--------	--------	--------	--------	--------	--------	--------	--------	--------	--------	--------	--------	--------	--------	--------	--------	--------	--------	--------	--------	--------	--------	--------	--------	--------	--------	--------	--------	--------	--------	--------	--------	--------	--------	--------	--------	--------	--------	--------	--------	--------	--------	--------	--------	--------	--------	--------	--------	--------	--------	--------	--------	--------	--------	--------	--------	--------	--------	--------	--------	--------	--------	--------	--------	--------	--------	--------	--------	--------	--------	--------	--------	--------	--------	--------	--------	--------	--------	--------	--------	--------	--------	--------	--------	--------	--------	--------	--------	--------	--------	--------	--------	--------	--------	--------	--------	--------	--------	--------	--------	--------	--------	--------	--------	--------	--------	--------	--------	--------	--------	--------	--------	--------	--------	--------	--------	--------	--------	--------	--------	--------	--------	--------	--------	--------	--------	--------	--------	--------	--------	--------	--------	--------	--------	--------	--------	--------	--------	--------	--------	--------	--------	--------	--------	--------	--------	--------	--------	--------	--------	--------	--------	--------	--------	--------	--------	--------	--------	--------	--------	--------	--------	--------	--------	--------	--------	--------	--------	--------	--------	--------	--------	--------	--------	--------	--------	--------	--------	--------	--------	--------	--------	--------	--------	--------	--------	--------	--------	--------	--------	--------	--------	--------	--------	--------	--------	--------	--------	--------	--------	--------	--------	--------	--------	--------	--------	--------	--------	--------	--------	--------	--------	--------	--------	--------	--------	--------	--------	--------	--------	--------	--------	--------	--------	--------	--------	--------	--------	--------	--------	--------	--------	--------	--------	--------	--------	--------	--------	--------	--------	--------	--------	--------	--------	--------	--------	--------	--------	--------	--------	--------	--------	--------	--------	--------	--------	--------	--------	--------	--------	--------	--------	---------	---------	---------	---------	---------	---------	---------	---------	---------	---------	---------	---------	---------	---------	---------	---------	---------	---------	---------	---------	---------	---------	---------	---------	---------	---------	---------	---------	---------	---------	---------	---------	---------	---------	---------	---------	---------	---------	---------	---------	---------	---------	---------	---------	---------	---------	---------	---------	---------	---------	---------	---------	---------	---------	---------	---------	---------	---------	---------	---------	---------	---------	---------	---------	---------	---------	---------	---------	---------	---------	---------	---------	---------	---------	---------	---------	---------	---------	---------	---------	---------	---------	---------	---------	---------	---------	---------	---------	---------	---------	---------	---------	---------	---------	---------	---------	---------	---------	---------	---------	---------	---------	---------	---------	---------	---------	---------	---------	---------	---------	---------	---------	---------	---------	---------	---------	---------	---------	---------	---------	---------	---------	---------	---------	---------	---------	---------	---------	---------	---------	---------	---------	---------	---------	---------	---------	---------	---------	---------	---------	---------	---------	---------	---------	---------	---------	---------	---------	---------	---------	---------	---------	---------	---------	---------	---------	---------	---------	---------	---------	---------	---------	---------	---------	---------	---------	---------	---------	---------	---------	---------	---------	---------	---------	---------	---------	---------	---------	---------	---------	---------	---------	---------	---------	---------	---------	---------	---------	---------	---------	---------	---------	---------	---------	---------	---------	---------	---------	---------	---------	---------	---------	--------



- ▼Parapet  
RL95.570
- ▼Plant  
RL93.550
- ▼Level 21  
RL90.480
- ▼Level 20  
RL87.280
- ▼Level 19  
RL84.360
- ▼Level 18  
RL81.440
- ▼Level 17  
RL78.520
- ▼Level 16  
RL75.600
- ▼Level 15  
RL72.680
- ▼Level 14  
RL69.760
- ▼Level 13  
RL66.840
- ▼Level 12  
RL63.920
- ▼Level 11  
RL61.000
- ▼Level 10  
RL58.080
- ▼Level 9  
RL55.160
- ▼Level 8  
RL52.240
- ▼Level 7  
RL49.320
- ▼Level 6  
RL46.400
- ▼Level 5  
RL43.480
- ▼Level 4  
RL40.560
- ▼Level 3  
RL37.640
- ▼Level 2  
RL34.720
- ▼Level 1  
RL31.800
- ▼Upper Ground  
RL28.900
- ▼Lower Ground  
RL23.450



- Legend**
- ART1 Art Feature, Type 1: Painted soffit to main entry lobby.
  - ART2 Art Feature, Type 2: Embossed feature symbol into precast panel.
  - ART3 Art Feature, Type 3: Existing art wall, preserved.
  - AWN1 Awning, Type 1: Folded steel awning with decorative motif laser cut into leading edge. Paint finish equal to PF3.
  - BAL1 Balustrade, Type 1: Vertical 100 x 10 steel baluster, no top rail. Balusters angled at 90°. Powder coat finish, colour and finish to match PCF1.
  - BAL2 Balustrade, Type 2: Frameless clear glass balustrade system with separate steel flat bar handrail / stanchion support behind. Colour and finish to match PCF1.
  - CLD1 Cladding, Type 1: Stone cladding system, random length stretcher bond. Finish split face and / or exfoliate finish. Coursing height varies between 75 and 150mm. Random stone selection to match Hawksbury sandstone, Port Fairy Bluestone and off white / grey speckled granite.
  - CLD2 Cladding, Type 2: Timber cladding system, vertical V jointed 90mm wide. Service doors integrated to match. Timber equal to Spotted Gum in appearance. Natural colour with pigmented oil finish.
  - CLD3 Cladding, Type 3: Terracotta facade tile system, 175mm horizontal profile, colour range varies to suit facade concept and surface finish varies between glazed and natural. Facade system equal to N&K Architectural Terracotta. Colours and finishes equal to TERRA1 natural and engobe colour range.
  - CLD4 Cladding, Type 4: Metal cladding system, express jointed, with concealed essential service doors and louvers. Prefinished coating system. Colour and finish to match Alpolc 'Slate Grey' [MJ254-G30].
  - CLD5 Cladding, Type 5: Metal cladding system, express jointed. Prefinished coating system. Colour and finish to match Alpolc 'Milk White' [M7774-G30].
  - CLD6 Cladding, Type 6: Metal cladding system, express jointed. Prefinished coating system. Colour and finish to match Alpolc 'Charcoal' [M7991-G30].
  - CON1 Concrete, Off Form Finish, Type 1: Natural concrete, smooth board finish. Colour natural grey concrete mix. Penetrating clear matte sealer over.
  - CON2 Concrete, Off Form Finish, Type 2: Natural concrete, textured rough sawn timber board finish. Colour natural grey concrete mix. Penetrating clear matte sealer over.
  - CPC1 Concrete, Precast, Type 1: Smooth finish concrete wall elements. Colour 'lite & brittle' concrete mix with white oxide pigment additive. Penetrating clear matte sealer over.
  - CPC2 Concrete, Precast, Type 2: Decorative finish concrete wall elements, vertical square edged profiled form liner finish, 30mm spacing, 15mm depth equal to Reckli 2/77 'Tigris' profile. Colour equal to CPC1. Penetrating clear matte sealer over.
  - CPC3 Concrete, Precast, Type 3: Decorative finish concrete wall elements, vertical radius profiled form liner finish, 30mm spacing, 32mm diam., 53mm depth equal to Reckli 2/94 'Orinoco' profile. Colour equal to CPC1. Penetrating clear matte sealer over.
  - DP1 Decorative Pattern, Type 1: Custom decorative pattern integrated to finished glass surface to enhance privacy.
  - FT1 Facade Glazing System, Type 1: Street Level Entry Foyer & Associated Spaces. Glass, clear. Framing system, aluminium, powder coat finish. Mechanical louvers integral to frame system. Matching aluminium cover plates to conceal slab edges and adjacent wall elements. Framing colour to match PCF1. Refer to Section J assessment for performance requirements. Reflectivity to be less than 20%.
  - FT2 Facade Glazing System, Type 2: Decorative Bay Window Elements. Glass, clear. Front faced glazing system with shadow box glazing detail to conceal spandrel and slab edge elements. Aluminium, powder coat finish. Colour and finish to match PCF1. Refer to Section J assessment for performance requirements. Reflectivity to be less than 20%.
  - FT3 Facade Glazing System, Type 3: Window Wall Elements. Glass, grey body tint. Framing system, aluminium, powder coat finish. Colour and finish to match PCF1. Refer to Section J assessment for performance requirements. Reflectivity to be less than 20%.
  - FT4 Facade Glazing System, Type 4: Infill Windows. Glass, clear. Framing system, aluminium, powder coat finish. Mechanical louvers integral to frame system. Matching aluminium cover plates to conceal slab edges and adjacent wall elements. Framing colour to match PCF1. Refer to Section J assessment for performance requirements. Reflectivity to be less than 20%.
  - FT5 Facade Glazing System, Type 5: Infill Windows. Glass, grey body tint. Framing system, aluminium, with decorative 150mm projecting vertical fins and aluminium slab extension. Powder coat finish, colour to match PCF1. Refer to Section J assessment for performance requirements. Reflectivity to be less than 20%.
  - G11 Gate, Type 1: Decorative timber and steel entry gate. Timber equal to CLD2 material and finish. Steel, paint finish, equal to PF3.
  - HR1 Handrail, Type 1: Decorative handrail to street level interface. 32mm diam. steel, bronze finish.
  - LV1 Louvre Roof, Type 1: Fixed horizontal elliptical aluminium louvre system, 250mm profile. Angle set to shield view of plant from upper levels. Powder coat finish, colour and finish to match PCF1.
  - MOR1 Metal Deck Roofing, Type 1: Standing seam profiled roofing system to match Lysaght 'Longline 305' profile. Colour to match Colorbond 'Monument'.
  - PCF1 Powdercoat Finish, Type 1: Colour and finish to match Dulux - Fluorocel 'Xtreme Charcoal' satin [9647297M].
  - PF1 Paint Finish, Type 1: Pigment stain paint system, equal to Keim Concretal Lasur System.Pigment. 30% concentration / opacity. Colour 'White / Weiss' [9872].
  - PF2 Paint Finish, Type 2: Pigment stain paint system, equal to Keim Concretal Lasur System.Pigment. 70% concentration / opacity. Colour 'Black / Schwartz' [9008].
  - PF3 Paint Finish, Type 3: Colour and finish to match Dulux - Micaceous Iron Oxide 'Mid Grey'.
  - PV1 Paving, Type 1: Natural stone paving to external steps, landings and foyer areas. Refer to Landscape documentation for further information.
  - SC1 Screen, Type 1: Fixed vertical elliptical aluminium louvre system, 250mm profile. Powder coat finish, colour and finish to match PCF1.
  - SIG1 Signage, Type 1: Integral building identification signage, surface fixed onto building facade. Bronze finish. Size and extent as per elevation drawings.
  - VH1 Ventilation Hatch, Type 1: Aluminium ventilation hatch integrated with glazing. Aluminium, powder coat finish. Colour and finish to match PCF1.

**NOTES**

THIS DRAWING IS COPYRIGHT © OF TURNER. NO REPRODUCTION WITHOUT PERMISSION. UNLESS NOTED OTHERWISE THIS DRAWING IS NOT FOR CONSTRUCTION. ALL DIMENSIONS AND LEVELS ARE TO BE CHECKED ON SITE PRIOR TO THE COMMENCEMENT OF WORK. BEFORE TURNER IF ANY DISCREPANCIES FOR CLARIFICATION BEFORE PROCEEDING WITH WORK. DRAWINGS ARE NOT TO BE SCALED. USE ONLY FIGURED DIMENSIONS. REFER TO CONSULTANT DOCUMENTATION FOR FURTHER INFORMATION.

**CLIENT**

**Aboriginal Housing Company**

83-123 Eveleigh Street Redfern NSW 2016 Australia

CLCS Quality Endorsed Company ISO 9001:2015, Registration Number 20476  
Notified Architect Nicholas Turner 1605, APR 98 594 094 871

**COL JAMES - STUDENT ACCOMMODATION**

**EVELEIGH ST.**

**PEMULWUY PRECINCT 2**

**LOUISE ST.**

Rev	Date	Approved by	Revision Notes
R	07/06/17	DS	Issue for DA Submission - DRP
S	09/06/17	DS	Issue for DA Submission - DoP
T	12/12/17	DS	Issue for Information
U	19/04/18	DS	Amended DA Submission - DoP

Project Title  
**Col James - Student Accommodation**  
83-123 Eveleigh Street Redfern NSW 2016 Australia

Drawing Title  
**GA Sections**  
**Section B-B**

Scale	Project No.	Drawn by	North
1:200 @A1, 50% @ A3	16107	CB	
Status	Dwg No.	Rev	
Development Application	DA-350-020	U	

**TURNER**

Level 7 ONE Oxford Street  
Durrington NSW 2010  
AUSTRALIA

T +61 2 8668 0000  
F +61 2 8668 0088  
turnerstudio.com.au



- ▼ **Parapet**  
RL96.570
- ▼ **Plant**  
RL93.550
- ▼ **Level 21**  
RL90.480
- ▼ **Level 20**  
RL87.280
- ▼ **Level 19**  
RL84.360
- ▼ **Level 18**  
RL81.440
- ▼ **Level 17**  
RL78.520
- ▼ **Level 16**  
RL75.600
- ▼ **Level 15**  
RL72.680
- ▼ **Level 14**  
RL69.760
- ▼ **Level 13**  
RL66.840
- ▼ **Level 12**  
RL63.920
- ▼ **Level 11**  
RL61.000
- ▼ **Level 10**  
RL58.080
- ▼ **Level 9**  
RL55.160
- ▼ **Level 8**  
RL52.240
- ▼ **Level 7**  
RL49.320
- ▼ **Level 6**  
RL46.400
- ▼ **Level 5**  
RL43.480
- ▼ **Level 4**  
RL40.560
- ▼ **Level 3**  
RL37.640
- ▼ **Level 2**  
RL34.720
- ▼ **Level 1**  
RL31.800
- ▼ **Upper Ground**  
RL28.900
- ▼ **Lower Ground**  
RL23.450

Pemulwuy Precinct 2  
Commercial Beyond

site boundary

Extent of building  
beyond, refer to  
DA-250-020 for  
further information

CPH

site boundary

Extent of building  
beyond, refer to  
DA-250-030 for further information

TOP OF PARAPET RL+82.17

Louvre Roof

PLANT

5BED

5BED

5BED

5BED

5BED

5BED

5BED

5BED

5BED

5BED

5BED

5BED

5BED

5BED

5BED

5BED

5BED

CLD6  
TYP

FT4  
TYP

CLD6  
TYP

FT4  
TYP

ART1  
TYP

ART1  
TYP

ART1  
TYP

ART1  
TYP

ART1  
TYP

ART1  
TYP

ART1  
TYP

ART1  
TYP

ART1  
TYP

ART1  
TYP

ART1  
TYP

ART1  
TYP

ART1  
TYP

site boundary beyond

Building Beyond

LOUISE ST.

EVELEIGH ST.

COL JAMES -STUDENT ACCOMM.

RAILWAY CORRIDOR

**Legend**

- ART1 Art Feature, Type 1:  
Painted soffit to main entry lobby.
- ART2 Art Feature, Type 2:  
Embossed feature symbol into precast panel.
- ART3 Art Feature, Type 3:  
Existing art wall, preserved.
- AWN1 Awning, Type 1:  
Folded steel awning with decorative motif laser cut into leading edge. Paint finish equal to PF3.
- BAL1 Balustrade, Type 1:  
Vertical 100 x 10 steel baluster, no top rail. Balusters angled at 90°. Powder coat finish, colour and finish to match PCF1.
- BAL2 Balustrade, Type 2:  
Frameless clear glass balustrade system with separate steel flat bar handrail / stanchion support behind. Colour and finish to match PCF1.
- CLD1 Cladding, Type 1:  
Stone cladding system, random length stretcher bond. Finish split face and / or exfoliate finish. Coursing height varies between 75 and 150mm. Random stone selection to match Hawksbury sandstone, Port Fairy Bluestone and off white / grey speckled granite.
- CLD2 Cladding, Type 2:  
Timber cladding system, vertical 'V' jointed 90mm wide. Service doors integrated to match. Timber equal to Spotted Gum in appearance. Natural colour with pigmented oil finish.
- CLD3 Cladding, Type 3:  
Terracotta facade tile system, 125mm horizontal profile, colour range varies to suit facade concept and surface finish varies between glazed and natural. Facade system equal to NBS Architectural Terracotta. Colours and finishes equal to TERRAET natural and engobe colour range.
- CLD4 Cladding, Type 4:  
Metal cladding system, express jointed, with concealed essential service doors and louvers. Prefinished coating system. Colour and finish to match Alpolic 'Slate Grey' [MJ254-G30].
- CLD5 Cladding, Type 5:  
Metal cladding system, express jointed. Prefinished coating system. Colour and finish to match Alpolic 'Milk White' [M7774-G30].
- CLD6 Cladding, Type 6:  
Metal cladding system, express jointed. Prefinished coating system. Colour and finish to match Alpolic 'Charcoal' [M7991-G30].
- COP1 Concrete, Off Form Finish, Type 1:  
Natural concrete, smooth board finish. Colour natural grey concrete mix. Penetrating clear matte sealer over.
- COP2 Concrete, Off Form Finish, Type 2:  
Natural concrete, textured rough sawn timber board finish. Colour natural grey concrete mix. Penetrating clear matte sealer over.
- CPC1 Concrete, Precast, Type 1:  
Smooth finish concrete wall elements. Colour 'lite & brittle' concrete mix with white oxide pigment additive. Penetrating clear matte sealer over.
- CPC2 Concrete, Precast, Type 2:  
Decorative finish concrete wall elements, vertical square edged profiled form liner finish, 30mm spacing, 15mm depth equal to Reckit 2/77 'Tiger's' profile. Colour equal to CPC1. Penetrating clear matte sealer over.
- CPC3 Concrete, Precast, Type 3:  
Decorative finish concrete wall elements, vertical radius profiled form liner finish, 30mm spacing, 32mm diam., 53mm depth equal to Reckit 2/94 'Orinoco' profile. Colour equal to CPC1. Penetrating clear matte sealer over.
- DP1 Decorative Pattern, Type 1:  
Custom decorative pattern integrated to finished glass surface to enhance privacy.
- FT1 Facade Glazing System, Type 1: **Street Level Entry Foyer & Associated Spaces**  
Glass, clear. Framing system, front faced glazing system with decorative 300mm projecting vertical mullions. Aluminium, powder coat finish. Structural steel supports fully concealed. Colour and finish to match PCF1. Refer to Section J assessment for performance requirements. Reflectivity to be less than 20%.
- FT2 Facade Glazing System, Type 2: **Decorative Bay Window Elements**  
Glass, clear. Front faced glazing system with shadow box glazing detail to conceal spandrel and slab edge elements. Aluminium, powder coat finish. Colour and finish to match PCF1. Refer to Section J assessment for performance requirements. Reflectivity to be less than 20%.
- FT3 Facade Glazing System, Type 3: **Window Wall Elements**  
Glass, grey body tint. Framing system, aluminium, with decorative 150mm projecting vertical fins and aluminium slab extension. Powder coat finish, colour to match PCF1. Refer to Section J assessment for performance requirements. Reflectivity to be less than 20%.
- FT4 Facade Glazing System, Type 4: **Infill Windows**  
Glass, clear. Framing system, aluminium, powder coat finish. Mechanical louvers integral to frame system. Matching aluminium cover plates to conceal slab edges and adjacent wall elements. Framing colour to match PCF1. Refer to Section J assessment for performance requirements. Reflectivity to be less than 20%.
- FT5 Facade Glazing System, Type 5: **Infill Windows**  
Glass, grey body tint. Framing system, aluminium, with decorative 150mm projecting vertical fins and aluminium slab extension. Powder coat finish, colour to match PCF1. Refer to Section J assessment for performance requirements. Reflectivity to be less than 20%.
- GT1 Gate, Type 1:  
Decorative timber and steel entry gate. Timber equal to CLD2 material and finish. Steel, paint finish, equal to PF3.
- HR1 Handrail, Type 1:  
Decorative handrail to street level interface. 32mm diam. steel, bronze finish.
- LV1 Louvre Roof, Type 1:  
Fixed horizontal elliptical aluminium louvre system, 250mm profile. Angle set to shield view of plant from upper levels. Powder coat finish, colour and finish to match PCF1.
- MHR1 Metal Deck Roofing, Type 1:  
Standing seam profiled roofing system to match Lysaght 'Longline 305' profile. Colour to match Colorbond 'Monument'.
- PCF1 Powdercoat Finish, Type 1:  
Colour and finish to match Dulux - Fluorocel 'Xtreme Charcoal' satin [9647297M].
- PF1 Paint Finish, Type 1:  
Pigment stain paint system, equal to Keim Concrete Lasur System.Pigment. 30% concentration / opacity. Colour 'White / Weiss' [9872].
- PF2 Paint Finish, Type 2:  
Pigment stain paint system, equal to Keim Concrete Lasur System.Pigment. 70% concentration / opacity. Colour 'Black / Schwartz' [9008].
- PF3 Paint Finish, Type 3:  
Colour and finish to match Dulux - Micaceous Iron Oxide 'Mid Grey'.
- PV1 Paving, Type 1:  
Natural stone paving to external steps, landings and foyer areas. Refer to Landscape documentation for further information.
- SC1 Screen, Type 1:  
Fixed vertical elliptical aluminium louvre system, 250mm profile. Powder coat finish, colour and finish to match PCF1.
- SIG1 Signage, Type 1:  
Integral building identification signage, surface fixed onto building facade. Bronze finish. Size and extent as per elevation drawings.
- VH1 Ventilation Hatch, Type 1:  
Aluminium ventilation hatch integrated with glazing. Aluminium, powder coat finish. Colour and finish to match PCF1.
- Note Refer to Landscape documentation for public domain and landscape areas for further information regarding materials and finishes selection.

**NOTES**

THIS DRAWING IS COPYRIGHT © OF TURNER. NO REPRODUCTION WITHOUT PERMISSION. UNLESS NOTED OTHERWISE THIS DRAWING IS NOT FOR CONSTRUCTION. ALL DIMENSIONS AND LEVELS ARE TO BE CHECKED ON SITE PRIOR TO THE COMMENCEMENT OF WORK. BEFORE TURNER IF ANY DISCREPANCIES FOR CLARIFICATION BEFORE PROCEEDING WITH WORK. DRAWINGS ARE NOT TO BE SCALED. USE ONLY FIGURED DIMENSIONS. REFER TO CONSULTANT DOCUMENTATION FOR FURTHER INFORMATION.

**CLIENT**

**Aboriginal Housing Company**  
83-123 Eveleigh Street Redfern NSW 2016 Australia

CLCS Quality Endorsement Company ISO 9001:2015, Registration Number 20476  
Notified Architect Nicholas Turner 6055, APR 98-99-04-01

Rev	Date	Approved by	Revision Notes
R	07/06/17	DS	Issue for DA Submission - DRP
S	09/06/17	DS	Issue for DA Submission - DoP
T	12/12/17	DS	Issue for Information
U	19/04/18	DS	Amended DA Submission - DoP

Project Title	Col James - Student Accommodation 83-123 Eveleigh Street Redfern NSW 2016 Australia
Drawing Title	GA Sections Section C-C

Scale	1:200 @A1, 50% @ A3	Project No.	16107	Drawn by	CB	North
Status	Development Application	Dwg No.	DA-350-030	Rev	U	

**TURNER**

Level 7 ONE Oxford Street  
Durrington NSW 2010  
AUSTRALIA  
T +61 2 8668 0000  
F +61 2 8668 0088  
turnerstudio.com.au