



**NOTES**  
THIS DRAWING IS COPYRIGHT © OF TURNER. NO REPRODUCTION WITHOUT PERMISSION. UNLESS NOTED OTHERWISE THIS DRAWING IS NOT FOR CONSTRUCTION. ALL DIMENSIONS AND LEVELS ARE TO BE CHECKED ON SITE PRIOR TO THE COMMENCEMENT OF WORK. REPORT TURNER OF ANY DISCREPANCIES FOR CLARIFICATION BEFORE PROCEEDING WITH WORK. DRAWINGS ARE NOT TO BE SCALED. USE ONLY FIGURED DIMENSIONS. REFER TO CONSULTANT DOCUMENTATION FOR FURTHER INFORMATION.

**CLIENT**  
**Aboriginal Housing Company**  
83-123 Eveleigh Street Redfern NSW 2016 Australia

DLCS Quality Endorsed Company ISO 9001:2015, Registration Number 20476  
Notified Architect Nicholas Turner 6055, APR 99 504 034 811

Rev	Date	Approved by	Revision Notes
U	19/04/18	DS	Amended DA Submission - DoP

Project Title  
**Col James - Student Accommodation**  
83-123 Eveleigh Street Redfern NSW 2016 Australia

Drawing Title  
Photomontage Image (A1)  
Caroline street-Abercrombie street

Scale	Project No.	Drawn by	North
NTS	16107	CB	
Status	Dwg No.	Rev	
Development Application	DA-900-070	U	

**TURNER**

Level 7 ONE Oxford Street  
Darlinghurst NSW 2010  
AUSTRALIA  
T +61 2 8668 0000  
F +61 2 8668 0088  
turnerstudio.com.au



COF1

MDR1

PF1

BAL1

PF2

FT4

CLD4

FT2

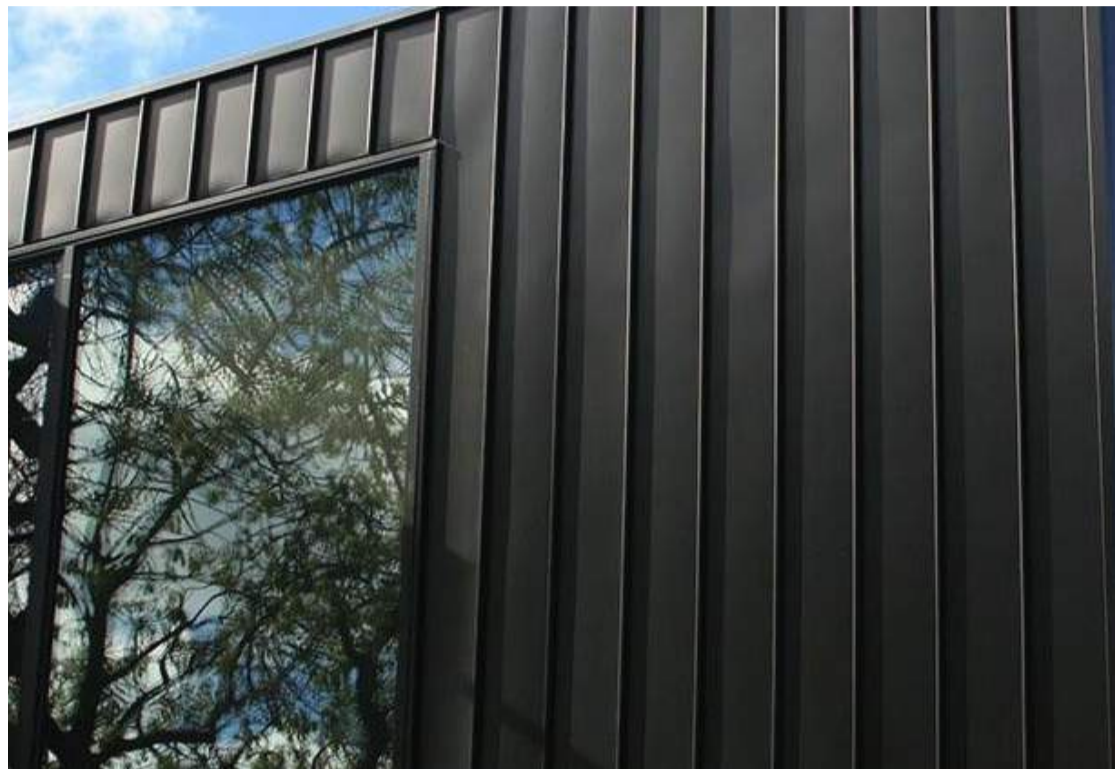
COF1

PF3

PF1



FT2



MDR1



BAL1



PF1

Legend

- ART1 Art Feature, Type 1: Painted soffit to main entry lobby.
- ART2 Art Feature, Type 2: Embossed feature symbol into precast panel.
- ART3 Art Feature, Type 3: Existing art wall, preserved.
- AWN1 Awning, Type 1: Folded steel awning with decorative motif laser cut into leading edge. Paint finish equal to PF3.
- BAL1 Balustrade, Type 1: Vertical 100 x 10 steel baluster, no top rail. Balusters angled at 90°. Powder coat finish, colour and finish to match PCF1.
- BAL2 Balustrade, Type 2: Frameless clear glass balustrade system with separate steel flat bar handrail / stanchion support behind. Colour and finish to match PCF1.

- CLD1 Cladding, Type 1: Stone cladding system, random length stretcher bond. Finish split face and / or exfoliate finish. Coursing height varies between 75 and 150mm. Random stone selection to match Hawksbury sandstone, Port Fairy Bluestone and off white / grey speckled granite.
- CLD2 Cladding, Type 2: Timber cladding system, vertical 'V' jointed 90mm wide. Service doors integrated to match. Timber equal to Spotted Gum in appearance. Natural colour with pigmented oil finish.
- CLD3 Cladding, Type 3: Terracotta facade tile system, 125mm horizontal profile, colour range varies to suit facade concept and surface finish varies between glazed and natural. Facade system equal to NBR Architectural Terracotta. Colours and finishes equal to TERRAART natural and engobe colour range.
- CLD4 Cladding, Type 4: Metal cladding system, express jointed, with concealed essential service doors and louvers. Prefinished coating system. Colour and finish to match Alpolic 'Slate Grey' [MJ254-G30].

- CLD5 Cladding, Type 5: Metal cladding system, express jointed. Prefinished coating system. Colour and finish to match Alpolic 'Milk White' [M7774-G30].
- CLD6 Cladding, Type 6: Metal cladding system, express jointed. Prefinished coating system. Colour and finish to match Alpolic 'Charcoal' [M7991-G30].
- COP1 Concrete, Off Form Finish, Type 1: Natural concrete, smooth board finish. Colour natural grey concrete mix. Penetrating clear matte sealer over.
- COP2 Concrete, Off Form Finish, Type 2: Natural concrete, textured rough sawn timber board finish. Colour natural grey concrete mix. Penetrating clear matte sealer over.

- CPC1 Concrete, Precast, Type 1: Smooth finish concrete wall elements. Colour 'lite & brittle' concrete mix with white oxide pigment additive. Penetrating clear matte sealer over.
- CPC2 Concrete, Precast, Type 2: Decorative finish concrete wall elements, vertical square edged profiled form liner finish, 30mm spacing, 15mm depth equal to Reckli 2/77 'Tigris' profile. Colour equal to CPC1. Penetrating clear matte sealer over.
- CPC3 Concrete, Precast, Type 3: Decorative finish concrete wall elements, vertical radius profiled form liner finish, 30mm spacing, 32mm diam., 53mm depth equal to Reckli 2/94 'Orinoco' profile. Colour equal to CPC1. Penetrating clear matte sealer over.
- DP1 Decorative Pattern, Type 1: Custom decorative pattern integrated to finished glass surface to enhance privacy.

- FT1 Facade Glazing System, Type 1: Street Level Entry Foyer & Associated Spaces Glass, clear. Framing system, aluminium, powder coat finish. Mechanical louvers integral to frame system. Matching aluminium cover plates to conceal slab edges and adjacent wall elements. Framing colour to match PCF1. Refer to Section J assessment for performance requirements. Reflectivity to be less than 20%.
- FT2 Facade Glazing System, Type 2: Decorative Bay Window Elements Glass, clear. Front faced glazing system with shadow box glazing detail to conceal spandrel and slab edge elements. Aluminium, powder coat finish. Colour and finish to match PCF1. Refer to Section J assessment for performance requirements. Reflectivity to be less than 20%.
- FT3 Facade Glazing System, Type 3: Window Wall Elements Glass, grey body tint. Framing system, aluminium, powder coat finish. Colour and finish to match PCF1. Refer to Section J assessment for performance requirements. Reflectivity to be less than 20%.

- FT4 Facade Glazing System, Type 4: Infill Windows Glass, clear. Framing system, aluminium, powder coat finish. Mechanical louvers integral to frame system. Matching aluminium cover plates to conceal slab edges and adjacent wall elements. Framing colour to match PCF1. Refer to Section J assessment for performance requirements. Reflectivity to be less than 20%.
- FT5 Facade Glazing System, Type 5: Infill Windows Glass, grey body tint. Framing system, aluminium, with decorative 150mm projecting vertical fins and aluminium slab extension. Powder coat finish, colour to match PCF1. Refer to Section J assessment for performance requirements. Reflectivity to be less than 20%.
- GT1 Gate, Type 1: Decorative timber and steel entry gate. Timber equal to CLD2 material and finish. Steel, paint finish, equal to PF3.
- HR1 Handrail, Type 1: Decorative handrail to street level interface. 32mm diam. steel, bronze finish.

- LV1 Louvre Roof, Type 1: Fixed horizontal aluminium louvre system, 250mm profile. Angle set to shield view of plant from upper levels. Powder coat finish, colour and finish to match PCF1.
- MDR1 Metal Deck Roofing, Type 1: Standing seam profiled roofing system to match Lysaght 'Longline 305' profile. Colour to match Colorbond 'Monument'.
- PCF1 Powdercoat Finish, Type 1: Colour and finish to match Dulux - Fluorocel 'Xtreme Charcoal' satin [9647297M].
- PF1 Paint Finish, Type 1: Pigment stain paint system, equal to Keim Concretal Lasur System.Pigment. 30% concentration / opacity. Colour 'White / Weiss' [9872].
- PF2 Paint Finish, Type 2: Pigment stain paint system, equal to Keim Concretal Lasur System.Pigment. 70% concentration / opacity. Colour 'Black / Schwarz' [9008].

- PF3 Paint Finish, Type 3: Colour and finish to match Dulux - Micaceous Iron Oxide 'Mid Grey'.
- PVS Paving, Type 1: Natural stone paving to external steps, landings and foyer areas. Refer to Landscape documentation for further information.
- SCI Screen, Type 1: Fixed vertical elliptical aluminium louvre system, 250mm profile. Powder coat finish, colour and finish to match PCF1.
- SIG1 Signage, Type 1: Integral building identification signage, surface fixed onto building facade. Bronze finish. Size and extent as per elevation drawings.
- VH1 Ventilation Hatch, Type 1: Aluminium ventilation hatch integrated with glazing. Aluminium, powder coat finish. Colour and finish to match PCF1.
- Note Refer to Landscape documentation for public domain and landscape areas for further information regarding materials and finishes selection.

NOTES

THIS DRAWING IS COPYRIGHT © OF TURNER. NO REPRODUCTION WITHOUT PERMISSION. UNLESS NOTED OTHERWISE THIS DRAWING IS NOT FOR CONSTRUCTION. ALL DIMENSIONS AND LEVELS ARE TO BE CHECKED ON SITE PRIOR TO THE COMMENCEMENT OF WORK. BEFORE TURNER OF ANY DISCREPANCIES FOR CLARIFICATION BEFORE PROCEEDING WITH WORK. DRAWINGS ARE NOT TO BE SCALED. USE ONLY FIGURED DIMENSIONS. REFER TO CONSULTANT DOCUMENTATION FOR FURTHER INFORMATION.

DLCS Quality Endorsed Company ISO 9001:2015, Registration Number 23476  
Notified Architect Nicholas Turner 6885, APR 98 394 394 871

CLIENT

**Aboriginal Housing Company**  
83-123 Eveleigh Street Redfern NSW 2016 Australia

Rev	Date	Approved by	Revision Notes
R	07/06/17	DS	Issue for DA Submission - DRP
S	09/06/17	DS	Issue for DA Submission - DoP
T	12/12/17	DS	Issue for Information
U	19/04/18	DS	Amended DA Submission - DoP

Project Title  
**Col James - Student Accommodation**  
83-123 Eveleigh Street Redfern NSW 2016 Australia

Drawing Title  
**Materials and Finishes**  
Eveleigh Street - North

Scale	Project No.	Drawn by	North
NTS	16107	CB	
Status	Dwg No.	Rev	
Development Application	DA-950-001	U	

**TURNER**

Level 7 ONE Oxford Street  
Durlinghurst NSW 2010  
AUSTRALIA  
T +61 2 8668 0000  
F +61 2 8668 0088  
turnerstudio.com.au



COF1

FT2

FT4

BAL1

PF2

VH1

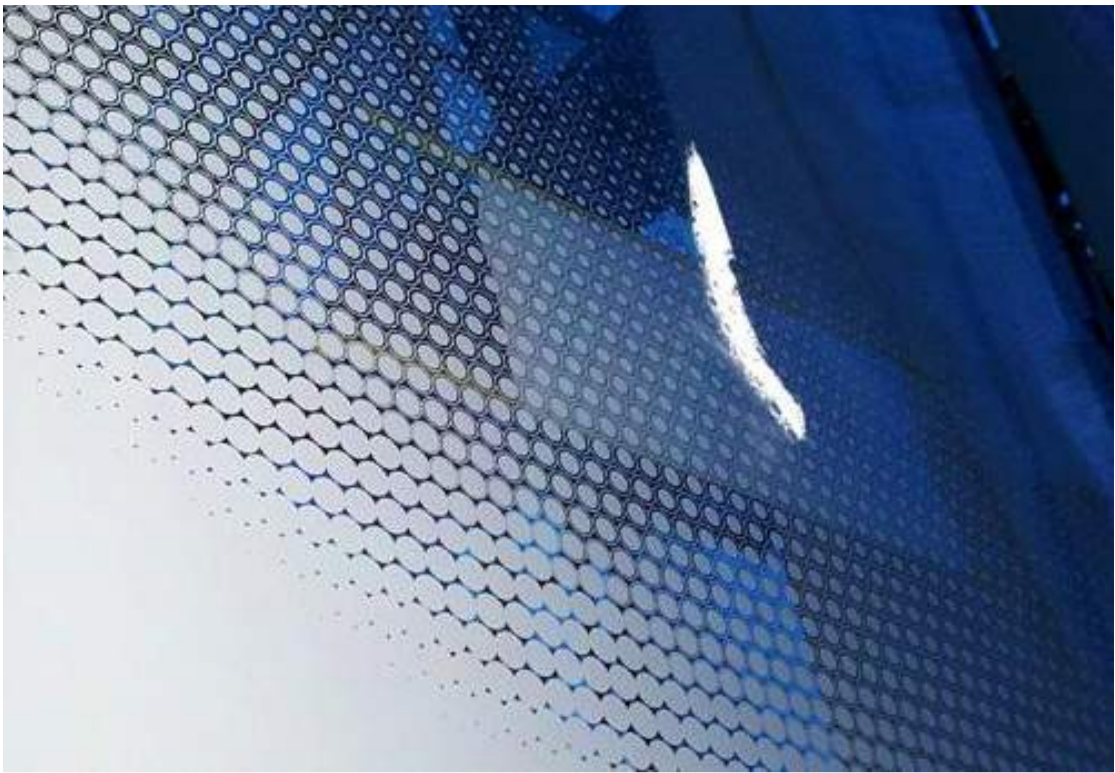
PF1

PF2

FT1 + DP1

CLD2

PF3



DP1



CLD2



BAL1



PF1

Legend

- ART1 Art Feature, Type 1: Painted soffit to main entry lobby.
- ART2 Art Feature, Type 2: Embossed feature symbol into precast panel.
- ART3 Art Feature, Type 3: Existing art wall, preserved.
- AWN1 Awning, Type 1: Folded steel awning with decorative motif laser cut into leading edge. Paint finish equal to PF3.
- BAL1 Balustrade, Type 1: Vertical 100 x 10 steel baluster, no top rail. Balusters angled at 90°. Powder coat finish, colour and finish to match PCF1.
- BAL2 Balustrade, Type 2: Frameless clear glass balustrade system with separate steel flat bar handrail / stanchion support behind. Colour and finish to match PCF1.

- CLD1 Cladding, Type 1: Stone cladding system, random length stretcher bond. Finish split face and / or exfoliate finish. Coursing height varies between 75 and 150mm. Random stone selection to match Hawksbury sandstone, Port Fairy Bluestone and off white / grey speckled granite.
- CLD2 Cladding, Type 2: Timber cladding system, vertical 'V' jointed 90mm wide. Service doors integrated to match. Timber equal to Spotted Gum in appearance. Natural colour with pigmented oil finish.
- CLD3 Cladding, Type 3: Terracotta facade tile system, 125mm horizontal profile, colour range varies to suit facade concept and surface finish varies between glazed and natural. Facade system equal to NBR Architectural Terracotta. Colours and finishes equal to TERRA1 natural and engobe colour range.
- CLD4 Cladding, Type 4: Metal cladding system, express jointed, with concealed essential service doors and louvers. Prefinished coating system. Colour and finish to match Alpolic 'Slate Grey' [MJ254-G30].

- CLD5 Cladding, Type 5: Metal cladding system, express jointed. Prefinished coating system. Colour and finish to match Alpolic 'Milk White' [M7774-G30].
- CLD6 Cladding, Type 6: Metal cladding system, express jointed. Prefinished coating system. Colour and finish to match Alpolic 'Charcoal' [M7991-G30].
- CON1 Concrete, Off Form Finish, Type 1: Natural concrete, smooth board finish. Colour natural grey concrete mix. Penetrating clear matte sealer over.
- CON2 Concrete, Off Form Finish, Type 2: Natural concrete, textured rough sawn timber board finish. Colour natural grey concrete mix. Penetrating clear matte sealer over.

- CPC1 Concrete, Precast, Type 1: Smooth finish concrete wall elements. Colour 'lite & bribe' concrete mix with white oxide pigment additive. Penetrating clear matte sealer over.
- CPC2 Concrete, Precast, Type 2: Decorative finish concrete wall elements, vertical square edged profiled form liner finish, 30mm spacing, 15mm depth equal to Reckit 2/77 'Tigris' profile. Colour equal to CPC1. Penetrating clear matte sealer over.
- CPC3 Concrete, Precast, Type 3: Decorative finish concrete wall elements, vertical radius profiled form liner finish, 30mm spacing, 32mm diam., 53mm depth equal to Reckit 2/94 'Orinoco' profile. Colour equal to CPC1. Penetrating clear matte sealer over.
- DP1 Decorative Pattern, Type 1: Custom decorative pattern integrated to finished glass surface to enhance privacy.

- FT1 Facade Glazing System, Type 1: Street Level Entry Foyer & Associated Spaces Glass, clear. Framing system, aluminium, powder coat finish. Mechanical louvers integral to frame system. Matching aluminium cover plates to conceal slab edges and adjacent wall elements. Framing colour to match PCF1. Refer to Section J assessment for performance requirements. Reflectivity to be less than 20%.
- FT2 Facade Glazing System, Type 2: Decorative Bay Window Elements Glass, clear. Front faced glazing system with shadow box glazing detail to conceal spandrel and slab edge elements. Aluminium, powder coat finish. Colour and finish to match PCF1. Refer to Section J assessment for performance requirements. Reflectivity to be less than 20%.
- FT3 Facade Glazing System, Type 3: Window Wall Elements Glass, grey body tint. Framing system, aluminium, powder coat finish. Colour and finish to match PCF1. Refer to Section J assessment for performance requirements. Reflectivity to be less than 20%.

- FT4 Facade Glazing System, Type 4: Infill Windows Glass, clear. Framing system, aluminium, powder coat finish. Mechanical louvers integral to frame system. Matching aluminium cover plates to conceal slab edges and adjacent wall elements. Framing colour to match PCF1. Refer to Section J assessment for performance requirements. Reflectivity to be less than 20%.
- FT5 Facade Glazing System, Type 5: Infill Windows Glass, grey body tint. Framing system, aluminium, with decorative 150mm projecting vertical fins and aluminium slab extension. Powder coat finish, colour to match PCF1. Refer to Section J assessment for performance requirements. Reflectivity to be less than 20%.
- GT1 Gate, Type 1: Decorative timber and steel entry gate. Timber equal to CLD2 material and finish. Steel, paint finish, equal to PF3.
- HR1 Handrail, Type 1: Decorative handrail to street level interface. 32mm diam. steel, bronze finish.

- LV1 Louvre Roof, Type 1: Fixed horizontal elliptical aluminium louvre system, 250mm profile. Angle set to shield view of plant from upper levels. Powder coat finish, colour and finish to match PCF1.
- MDR1 Metal Deck Roofing, Type 1: Standing seam profiled roofing system to match Lysaght 'Longline 305' profile. Colour to match Colorbond 'Monument'.
- PCF1 Powdercoat Finish, Type 1: Colour and finish to match Dulux - Fluorocel 'Xtreme Charcoal' satin [9647297M].
- PF1 Paint Finish, Type 1: Pigment stain paint system, equal to Keim Concretal Lasur System.Pigment. 30% concentration / opacity. Colour 'White / Weiss' [9872].
- PF2 Paint Finish, Type 2: Pigment stain paint system, equal to Keim Concretal Lasur System.Pigment. 70% concentration / opacity. Colour 'Black / Schwartz' [9008].

- PF3 Paint Finish, Type 3: Colour and finish to match Dulux - Micaceous Iron Oxide 'Mid Grey'.
  - PVS Paving, Type 1: Natural stone paving to external steps, landings and foyer areas. Refer to Landscape documentation for further information.
  - SC1 Screen, Type 1: Fixed vertical elliptical aluminium louvre system, 250mm profile. Powder coat finish, colour and finish to match PCF1.
  - SG1 Signage, Type 1: Integral building identification signage, surface fixed onto building facade. Bronze finish. Size and extent as per elevation drawings.
  - VH1 Ventilation Hatch, Type 1: Aluminium ventilation hatch integrated with glazing. Aluminium, powder coat finish. Colour and finish to match PCF1.
- Note Refer to Landscape documentation for public domain and landscape areas for further information regarding materials and finishes selection.

NOTES  
THIS DRAWING IS COPYRIGHT © OF TURNER. NO REPRODUCTION WITHOUT PERMISSION. UNLESS NOTED OTHERWISE THIS DRAWING IS NOT FOR CONSTRUCTION. ALL DIMENSIONS AND LEVELS ARE TO BE CHECKED ON SITE PRIOR TO THE COMMENCEMENT OF WORK. REPORT TURNER OF ANY DISCREPANCIES FOR CLARIFICATION BEFORE PROCEEDING WITH WORK. DRAWINGS ARE NOT TO BE SCALED. USE ONLY FIGURED DIMENSIONS. REFER TO CONSULTANT DOCUMENTATION FOR FURTHER INFORMATION.

CLIENT  
**Aboriginal Housing Company**  
83-123 Eveleigh Street Redfern NSW 2016 Australia

Rev	Date	Approved by	Revision Notes
R	07/06/17	DS	Issue for DA Submission - DRP
S	09/06/17	DS	Issue for DA Submission - DoP
T	12/12/17	DS	Issue for Information
U	19/04/18	DS	Amended DA Submission - DoP

Project Title  
**Col James - Student Accommodation**  
83-123 Eveleigh Street Redfern NSW 2016 Australia

Drawing Title  
**Materials and Finishes**  
Eveleigh Street - Courtyard Entry

Scale	Project No.	Drawn by	North
N1S	16107	CB	
Status	Dwg No.	Rev	
Development Application	DA-950-002	U	

**TURNER**

DLCS Quality Endorsed Company ISO 9001:2015, Registration Number 23476  
Notified Architect Nicholas Turner 6055, APR 99 594 594 871

Level 7 ONE Oxford Street  
Durlinghurst NSW 2010  
AUSTRALIA  
T +61 2 8668 0000  
F +61 2 8668 0088  
turnerstudio.com.au



CLD3

COF1

FT4

CLD6

FT2

BAL1

PF2

VH1

PF1

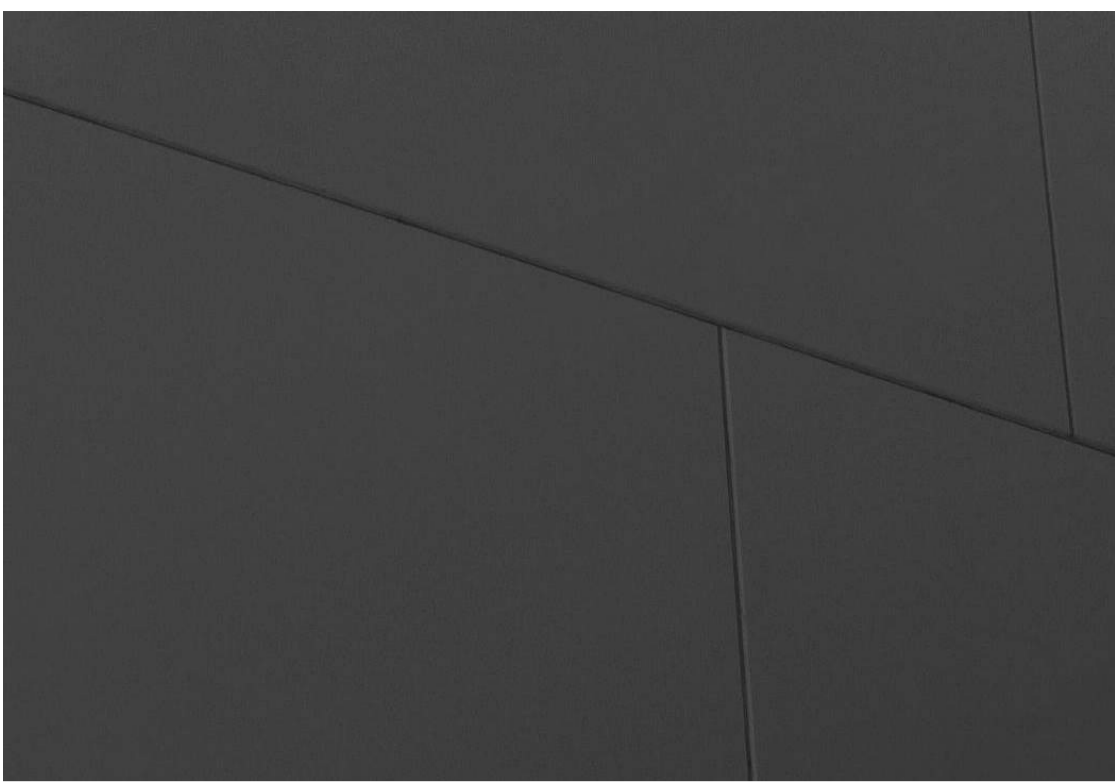
CLD1

COF2

COF1

FT1 + DP1

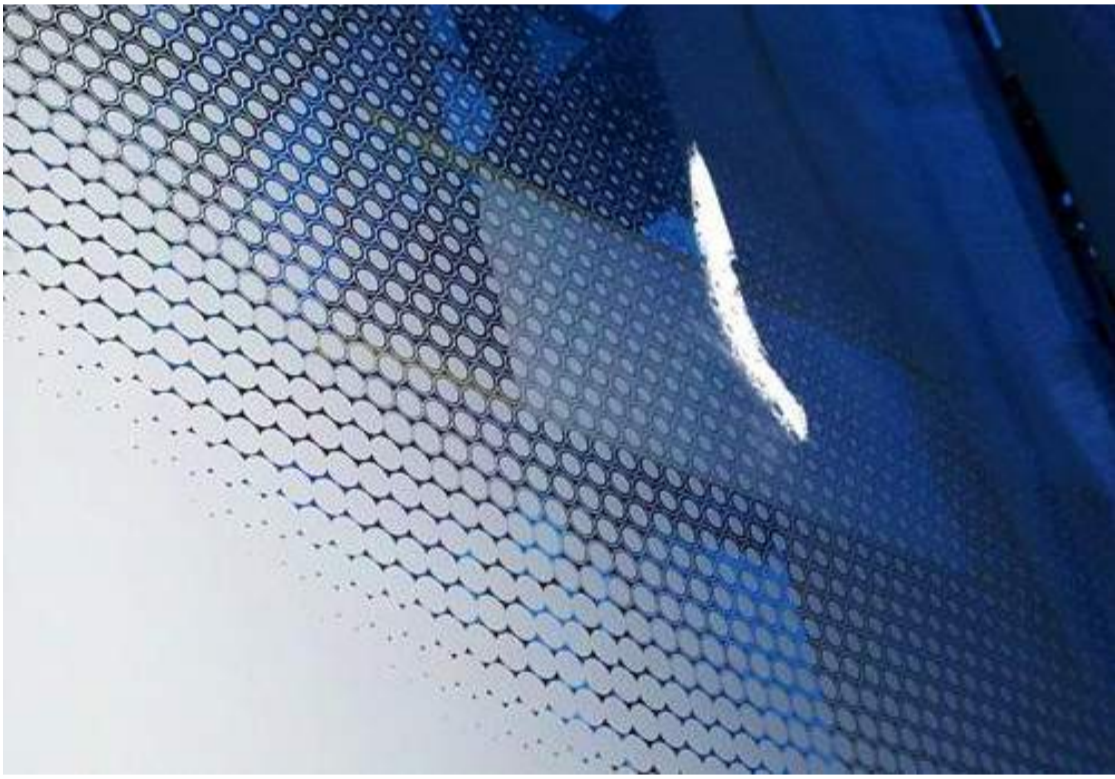
FT1 + DP1



CLD6



COF2



DP1



CLD1

Legend

- (ART1) Art Feature, Type 1: Painted soffit to main entry lobby.
- (ART2) Art Feature, Type 2: Embossed feature symbol into precast panel.
- (ART3) Art Feature, Type 3: Existing art wall, preserved.
- (AWN1) Awning, Type 1: Folded steel awning with decorative motif laser cut into leading edge. Paint finish equal to PF3.
- (BAL1) Balustrade, Type 1: Vertical 100 x 10 steel baluster, no top rail. Balusters angled at 90°. Powder coat finish, colour and finish to match PCF1.
- (BAL2) Balustrade, Type 2: Frameless clear glass balustrade system with separate steel flat bar handrail / stanchion support behind. Colour and finish to match PCF1.

- (CLD1) Cladding, Type 1: Stone cladding system, random length stretcher bond. Finish split face and / or exfoliate finish. Coursing height varies between 75 and 150mm. Random stone selection to match Hawksbury sandstone, Port Fairy Bluestone and of white / grey speckled granite.
- (CLD2) Cladding, Type 2: Timber cladding system, vertical 'V' jointed 90mm wide. Service doors integrated to match. Timber equal to Spotted Gum in appearance. Natural colour with pigmented oil finish.
- (CLD3) Cladding, Type 3: Terracotta facade tile system, 125mm horizontal profile, colour range varies to suit facade concept and surface finish varies between glazed and natural. Facade system equal to N&K Architectural Terracotta. Colours and finishes equal to TERRAART natural and engobe colour range.
- (CLD4) Cladding, Type 4: Metal cladding system, express jointed, with concealed essential service doors and louvers. Prefinished coating system. Colour and finish to match Alpolic 'Slate Grey' [MJ254-G30].

- (CLD5) Cladding, Type 5: Metal cladding system, express jointed. Prefinished coating system. Colour and finish to match Alpolic 'Milk White' [M7774-G30].
- (CLD6) Cladding, Type 6: Metal cladding system, express jointed. Prefinished coating system. Colour and finish to match Alpolic 'Charcoal' [M7991-G30].
- (COP1) Concrete, Off Form Finish, Type 1: Natural concrete, smooth board finish. Colour natural grey concrete mix. Penetrating clear matte sealer over.
- (COP2) Concrete, Off Form Finish, Type 2: Natural concrete, textured rough sawn timber board finish. Colour natural grey concrete mix. Penetrating clear matte sealer over.

- (CPC1) Concrete, Precast, Type 1: Smooth finish concrete wall elements. Colour 'lite & bribe' concrete mix with white oxide pigment additive. Penetrating clear matte sealer over.
- (CPC2) Concrete, Precast, Type 2: Decorative finish concrete wall elements, vertical square edged profiled form liner finish, 30mm spacing, 15mm depth equal to Reckit 277 'Tigris' profile. Colour equal to CPC1. Penetrating clear matte sealer over.
- (CPC3) Concrete, Precast, Type 3: Decorative finish concrete wall elements, vertical radius profiled form liner finish, 30mm spacing, 32mm diam., 53mm depth equal to Reckit 2/94 'Orinoco' profile. Colour equal to CPC1. Penetrating clear matte sealer over.
- (DPR1) Decorative Pattern, Type 1: Custom decorative pattern integrated to finished glass surface to enhance privacy.

- (FT1) Facade Glazing System, Type 1: Street Level Entry Foyer & Associated Spaces. Glass, clear. Framing system, aluminium, powder coat finish. Mechanical louvers integral to frame system. Matching aluminium cover plates to conceal slab edges and adjacent wall elements. Framing colour to match PCF1. Refer to Section J assessment for performance requirements. Reflectivity to be less than 20%.
- (FT2) Facade Glazing System, Type 2: Decorative Bay Window Elements. Glass, clear. Front faced glazing system with shadow box glazing detail to conceal spandrel and slab edge elements. Aluminium, powder coat finish. Colour and finish to match PCF1. Refer to Section J assessment for performance requirements. Reflectivity to be less than 20%.
- (FT3) Facade Glazing System, Type 3: Window Wall Elements. Glass, grey body tint. Framing system, aluminium, powder coat finish. Colour and finish to match PCF1. Refer to Section J assessment for performance requirements. Reflectivity to be less than 20%.

- (FT4) Facade Glazing System, Type 4: Infill Windows. Glass, clear. Framing system, aluminium, powder coat finish. Mechanical louvers integral to frame system. Matching aluminium cover plates to conceal slab edges and adjacent wall elements. Framing colour to match PCF1. Refer to Section J assessment for performance requirements. Reflectivity to be less than 20%.
- (FT5) Facade Glazing System, Type 5: Infill Windows. Glass, grey body tint. Framing system, aluminium, with decorative 150mm projecting vertical fins and aluminium slab extension. Powder coat finish, colour to match PCF1. Refer to Section J assessment for performance requirements. Reflectivity to be less than 20%.
- (GT1) Gate, Type 1: Decorative timber and steel entry gate. Timber equal to CLD2 material and finish. Steel, paint finish, equal to PF3.
- (HR1) Handrail, Type 1: Decorative handrail to street level interface. 32mm diam. steel, bronze finish.

- (LV1) Louvre Roof, Type 1: Fixed horizontal elliptical aluminium louvre system, 250mm profile. Angle set to shield view of plant from upper levels. Powder coat finish, colour and finish to match PCF1.
- (MDR1) Metal Deck Roofing, Type 1: Standing seam profiled roofing system to match Lysaght 'Longline 305' profile. Colour to match Colorbond 'Monument'.
- (PCF1) Powdercoat Finish, Type 1: Colour and finish to match Dulux - Fluorocel 'Xtreme Charcoal' satin [9647297M].
- (PI1) Paint Finish, Type 1: Pigment stain paint system, equal to Keim Concretal Lasur System. Pigment. 30% concentration / opacity. Colour 'White / Weiss' [9872].
- (PI2) Paint Finish, Type 2: Pigment stain paint system, equal to Keim Concretal Lasur System. Pigment. 70% concentration / opacity. Colour 'Black / Schwartz' [9008].

- (PF3) Paint Finish, Type 3: Colour and finish to match Dulux - Micaceous Iron Oxide 'Mid Grey'.
- (PVS1) Paving, Type 1: Natural stone paving to external steps, landings and foyer areas. Refer to Landscape documentation for further information.
- (SC1) Screen, Type 1: Fixed vertical elliptical aluminium louvre system, 250mm profile. Powder coat finish, colour and finish to match PCF1.
- (SG1) Signage, Type 1: Integral building identification signage, surface fixed onto building facade. Bronze finish. Size and extent as per elevation drawings.
- (VH1) Ventilation Hatch, Type 1: Aluminium ventilation hatch integrated with glazing. Aluminium, powder coat finish. Colour and finish to match PCF1.

Note Refer to Landscape documentation for public domain and landscape areas for further information regarding materials and finishes selection.

NOTES

THIS DRAWING IS COPYRIGHT © OF TURNER. NO REPRODUCTION WITHOUT PERMISSION. UNLESS NOTED OTHERWISE THIS DRAWING IS NOT FOR CONSTRUCTION. ALL DIMENSIONS AND LEVELS ARE TO BE CHECKED ON SITE PRIOR TO THE COMMENCEMENT OF WORK. REPORT TURNER OF ANY DISCREPANCIES FOR CLARIFICATION BEFORE PROCEEDING WITH WORK. DRAWINGS ARE NOT TO BE SCALED. USE ONLY FIGURED DIMENSIONS. REFER TO CONSULTANT DOCUMENTATION FOR FURTHER INFORMATION.

CLIENT

**Aboriginal Housing Company**  
83-123 Eveleigh Street Redfern NSW 2016 Australia

Rev	Date	Approved by	Revision Notes
R	07/06/17	DS	Issue for DA Submission - DRP
S	09/06/17	DS	Issue for DA Submission - DoP
T	12/12/17	DS	Issue for Information
U	19/04/18	DS	Amended DA Submission - DoP

Project Title  
**Col James - Student Accommodation**  
83-123 Eveleigh Street Redfern NSW 2016 Australia

Drawing Title  
**Materials and Finishes**  
Eveleigh Street - South

Scale	Project No.	Drawn by	North
NTS	16107	CB	
Status	Dwg No.	Rev	
Development Application	DA-950-003	U	

**TURNER**

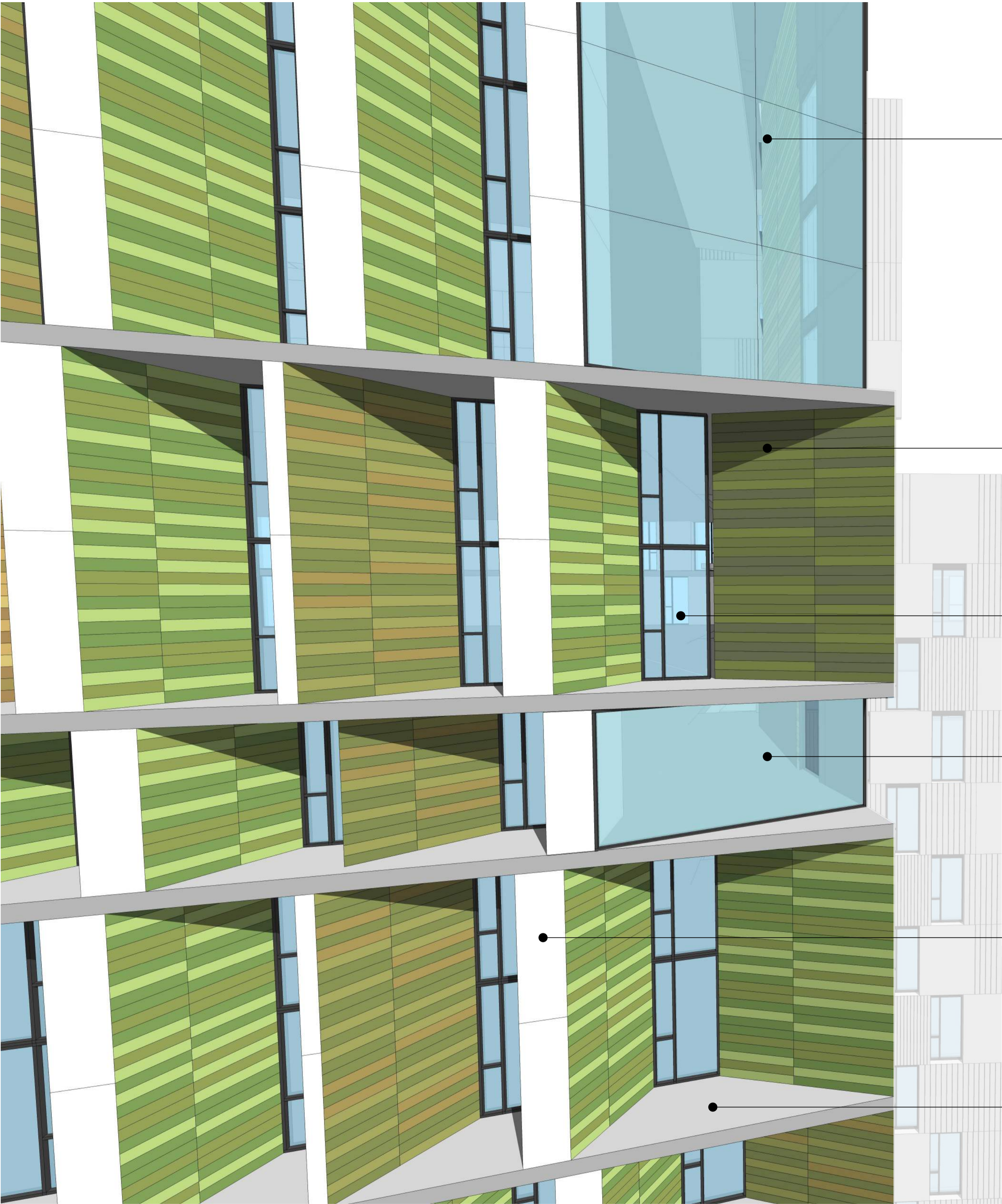
Level 7 ONE Oxford Street  
Durrington NSW 2010  
AUSTRALIA  
T +61 2 8668 0000  
F +61 2 8668 0088  
turnerstudio.com.au



scale	Project No.	Drawn by	North
ITS	16107	CB	
status	Dwg No.	Rev	
development Application	DA-950-004	U	

**TURNER**

Level 7 **ONE** Oxford Street  
 Darling NSW 2010  
 AUSTRALIA  
 T +61 2 8668 0000  
 F +61 2 8668 0001  
 P 000725440.com.au



FT2

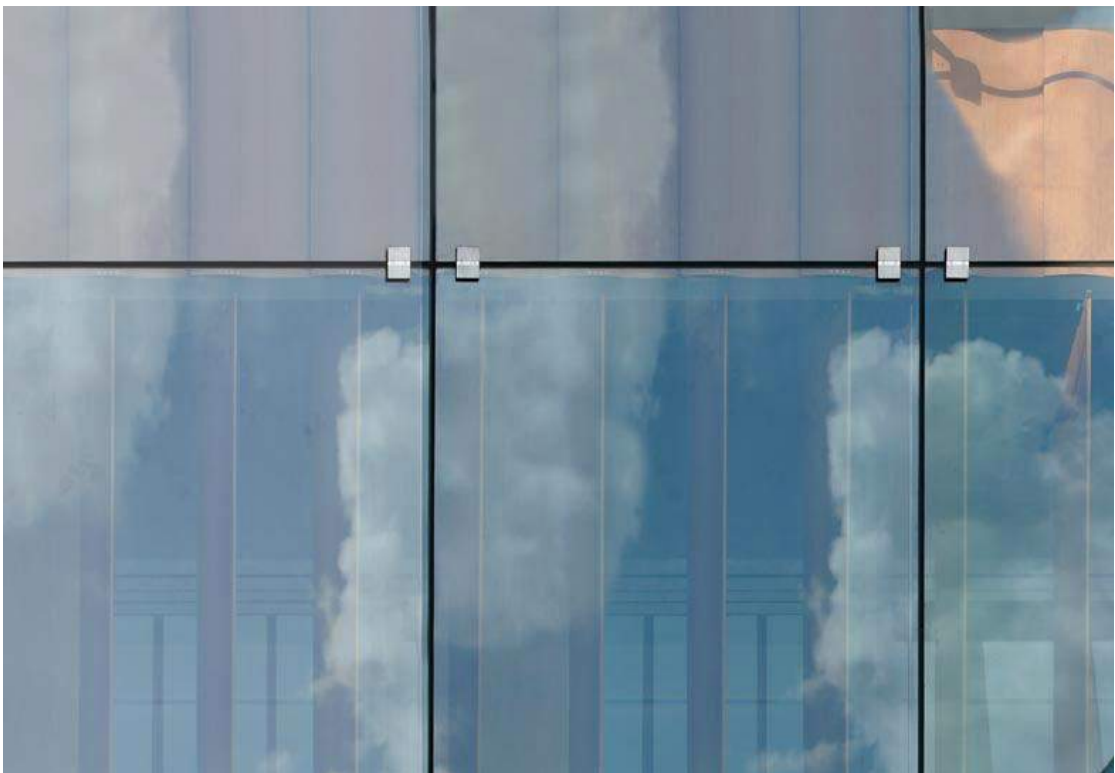
CLD3

FT4

FT2

CLD5

COF1



FT2



CLD3



CLD5



COF1

Legend

- ART1 Art Feature, Type 1: Painted soffit to main entry lobby.
- ART2 Art Feature, Type 2: Embossed feature symbol into precast panel.
- ART3 Art Feature, Type 3: Existing art wall, preserved.
- AWN1 Awning, Type 1: Folded steel awning with decorative motif laser cut into leading edge. Paint finish equal to PF3.
- BAL1 Balustrade, Type 1: Vertical 100 x 10 steel baluster, no top rail. Balusters angled at 90°. Powder coat finish, colour and finish to match PCF1.
- BAL2 Balustrade, Type 2: Frameless clear glass balustrade system with separate steel flat bar handrail / stanchion support behind. Colour and finish to match PCF1.
- CLD1 Cladding, Type 1: Stone cladding system, random length stretcher bond. Finish split face and / or exfoliate finish. Coursing height varies between 75 and 150mm. Random stone selection to match Hawksbury sandstone, Port Fairy Bluestone and off white / grey speckled granite.
- CLD2 Cladding, Type 2: Timber cladding system, vertical 'V' jointed 90mm wide. Service doors integrated to match. Timber equal to Spotted Gum in appearance. Natural colour with pigmented oil finish.
- CLD3 Cladding, Type 3: Terracotta tegula tile system, 175mm horizontal profile, colour range varies to suit facade concept and surface finish varies between glazed and natural. Facade system equal to NBR Architectural Terracotta. Colours and finishes equal to TERRAART natural and engobe colour range.
- CLD4 Cladding, Type 4: Metal cladding system, express jointed, with concealed essential service doors and louvers. Prefinished coating system. Colour and finish to match Alpolic 'Slate Grey' [MJ254-G30].
- CLD5 Cladding, Type 5: Metal cladding system, express jointed. Prefinished coating system. Colour and finish to match Alpolic 'Milk White' [M7774-G30].
- CLD6 Cladding, Type 6: Metal cladding system, express jointed. Prefinished coating system. Colour and finish to match Alpolic 'Charcoal' [M7991-G30].
- CON1 Concrete, Off Form Finish, Type 1: Natural concrete, smooth board finish. Colour natural grey concrete mix. Penetrating clear matte sealer over.
- CON2 Concrete, Off Form Finish, Type 2: Natural concrete, textured rough sawn timber board finish. Colour natural grey concrete mix. Penetrating clear matte sealer over.
- CPC1 Concrete, Precast, Type 1: Smooth finish concrete wall elements. Colour 'lite & brittle' concrete mix with white oxide pigment additive. Penetrating clear matte sealer over.
- CPC2 Concrete, Precast, Type 2: Decorative finish concrete wall elements, vertical square edged profiled form liner finish, 30mm spacing, 15mm depth equal to Reckit 2/77 'Tigris' profile. Colour equal to CPC1. Penetrating clear matte sealer over.
- CPC3 Concrete, Precast, Type 3: Decorative finish concrete wall elements, vertical radius profiled form liner finish, 30mm spacing, 32mm diam., 53mm depth equal to Reckit 2/94 'Orinoco' profile. Colour equal to CPC1. Penetrating clear matte sealer over.
- DP1 Decorative Pattern, Type 1: Custom decorative pattern integrated to finished glass surface to enhance privacy.
- FT1 Façade Glazing System, Type 1: Street Level Entry Foyer & Associated Spaces Glass, clear. Framing system, front faced glazing system with decorative 300mm projecting vertical mullions. Aluminium, powder coat finish. Structural steel supports fully concealed. Colour and finish to match PCF1. Refer to Section J assessment for performance requirements. Reflectivity to be less than 20%.
- FT2 Façade Glazing System, Type 2: Decorative Bay Window Elements Glass, clear. Front faced glazing system with shadow box glazing detail to conceal spandrel and slab edge elements. Aluminium, powder coat finish. Colour and finish to match PCF1. Refer to Section J assessment for performance requirements. Reflectivity to be less than 20%.
- FT3 Façade Glazing System, Type 3: Window Wall Elements Glass, grey body tint. Framing system, aluminium, powder coat finish. Colour and finish to match PCF1. Refer to Section J assessment for performance requirements. Reflectivity to be less than 20%.
- FT4 Façade Glazing System, Type 4: Infill Windows Glass, clear. Framing system, aluminium, powder coat finish. Mechanical louvers integral to frame system. Matching aluminium cover plates to conceal slab edges and adjacent wall elements. Framing colour to match PCF1. Refer to Section J assessment for performance requirements. Reflectivity to be less than 20%.
- FT5 Façade Glazing System, Type 5: Infill Windows Glass, grey body tint. Framing system, aluminium, with decorative 150mm projecting vertical fins and aluminium slab extension. Powder coat finish, colour to match PCF1. Refer to Section J assessment for performance requirements. Reflectivity to be less than 20%.
- G11 Gate, Type 1: Decorative timber and steel entry gate. Timber equal to CLD2 material and finish. Steel, paint finish, equal to PF3.
- HR1 Handrail, Type 1: Decorative handrail to street level interface. 32mm diam. steel, bronze finish.
- LVR1 Louvre Roof, Type 1: Fixed horizontal elliptical aluminium louvre system, 250mm profile. Angle set to shield view of plant from upper levels. Powder coat finish, colour and finish to match PCF1.
- MDR1 Metal Deck Roofing, Type 1: Standing seam profiled roofing system to match Lysaght 'Longline 305' profile. Colour to match Colorbond 'Monument'.
- PCF1 Powdercoat Finish, Type 1: Colour and finish to match Dulux - Fluorocel 'Xtreme Charcoal' satin [9647297M].
- PF1 Paint Finish, Type 1: Pigment stain paint system, equal to Keim Concretal Lasur System. Pigment. 30% concentration / opacity. Colour 'White / Weiss' [9872].
- PF2 Paint Finish, Type 2: Pigment stain paint system, equal to Keim Concretal Lasur System. Pigment. 70% concentration / opacity. Colour 'Black / Schwarz' [9008].
- PF3 Paint Finish, Type 3: Colour and finish to match Dulux - Micaceous Iron Oxide 'Mid Grey'.
- PVI1 Paving, Type 1: Natural stone paving to external steps, landings and foyer areas. Refer to Landscape documentation for further information.
- SCI1 Screen, Type 1: Fixed vertical elliptical aluminium louvre system, 250mm profile. Powder coat finish, colour and finish to match PCF1.
- SIG1 Signage, Type 1: Integral building identification signage, surface fixed onto building facade. Bronze finish. Size and extent as per elevation drawings.
- VH1 Ventilation Hatch, Type 1: Aluminium ventilation hatch integrated with glazing. Aluminium, powder coat finish. Colour and finish to match PCF1.
- Note Refer to Landscape documentation for public domain and landscape areas for further information regarding materials and finishes selection.

NOTES

THIS DRAWING IS COPYRIGHT © OF TURNER. NO REPRODUCTION WITHOUT PERMISSION. UNLESS NOTED OTHERWISE THIS DRAWING IS NOT FOR CONSTRUCTION. ALL DIMENSIONS AND LEVELS ARE TO BE CHECKED ON SITE PRIOR TO THE COMMENCEMENT OF WORK. REPORT TURNER OF ANY DISCREPANCIES FOR CLARIFICATION BEFORE PROCEEDING WITH WORK. DRAWINGS ARE NOT TO BE SCALED. USE ONLY FIGURED DIMENSIONS. REFER TO CONSULTANT DOCUMENTATION FOR FURTHER INFORMATION.

DLCS Quality Endorsed Company ISO 9001:2015, Registration Number 23476  
Notified Architect Nicholas Turner 6055, APR 99 594 394 871

CLIENT

**Aboriginal Housing Company**  
83-123 Eveleigh Street Redfern NSW 2016 Australia

Rev	Date	Approved by	Revision Notes
R	07/06/17	DS	Issue for DA Submission - DRP
S	09/06/17	DS	Issue for DA Submission - DoP
T	12/12/17	DS	Issue for Information
U	19/04/18	DS	Amended DA Submission - DoP

Project Title  
**Col James - Student Accommodation**  
83-123 Eveleigh Street Redfern NSW 2016 Australia

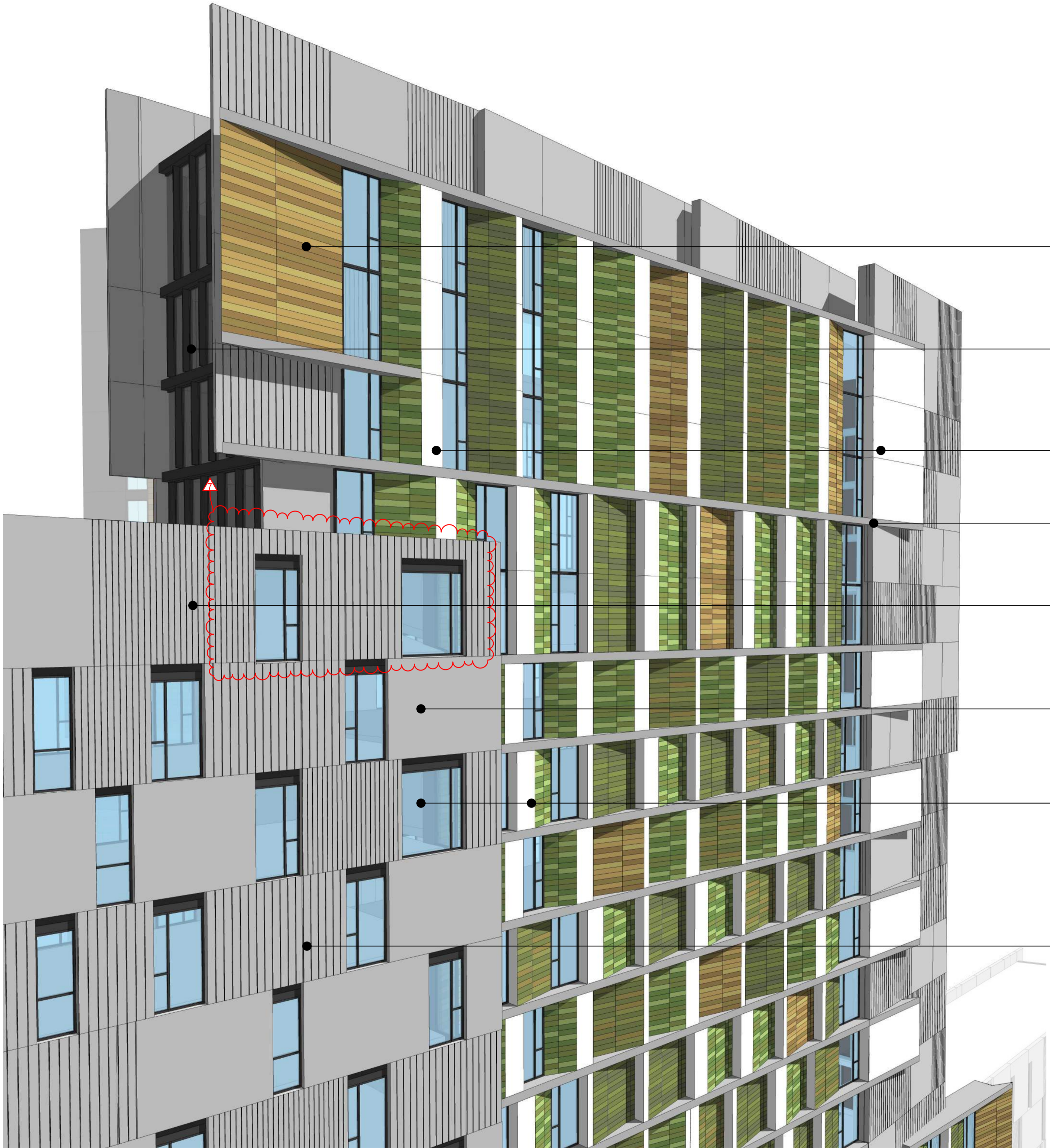
Drawing Title  
**Materials and Finishes**  
Eveleigh Street - High Levels

Scale	Project No.	Drawn by	North
NTS	16107	CB	
Status	Dwg No.	Rev	
Development Application	DA-950-005	U	

**TURNER**

Level 7 **ONE** Oxford Street  
Durlinghurst NSW 2010  
AUSTRALIA

T +61 2 8668 0000  
F +61 2 8668 0088  
turnerstudio.com.au



CLD3

FT5

CLD5

COF1

CPC3

CPC1

FT4

CPC2



CLD3



CLD5



CPC3



COF1

Legend

- (ART1) Art Feature, Type 1: Painted soffit to main entry lobby.
- (ART2) Art Feature, Type 2: Embossed feature symbol into precast panel.
- (ART3) Art Feature, Type 3: Existing art wall, preserved.
- (AWN) Awning, Type 1: Folded steel awning with decorative motif laser cut into leading edge. Paint finish equal to PF3.
- (BAL1) Balustrade, Type 1: Vertical 100 x 10 steel baluster, no top rail. Balusters angled at 90°. Powder coat finish, colour and finish to match PCF1.
- (BAL2) Balustrade, Type 2: Frameless clear glass balustrade system with separate steel flat bar handrail / stanchion support behind. Colour and finish to match PCF1.
- (CLD1) Cladding, Type 1: Stone cladding system, random length stretcher bond. Finish split face and / or exfoliate finish. Coursing height varies between 75 and 150mm. Random stone selection to match Hawksbury sandstone, Port Fairy Bluestone and off white / grey speckled granite.
- (CLD2) Cladding, Type 2: Timber cladding system, vertical 'V' jointed 90mm wide. Service doors integrated to match. Timber equal to Spotted Gum in appearance. Natural colour with pigmented oil finish.
- (CLD3) Cladding, Type 3: Terracotta facade tile system, 125mm horizontal profile, colour range varies to suit facade concept and surface finish varies between glazed and natural. Facade system equal to NBR Architectural Terracotta. Colours and finishes equal to TERRACOT natural and engobe colour range.
- (CLD4) Cladding, Type 4: Metal cladding system, express jointed, with concealed essential service doors and louvers. Prefinished coating system. Colour and finish to match Alpolic 'Slate Grey' [MJ254-G30].
- (CLD5) Cladding, Type 5: Metal cladding system, express jointed. Prefinished coating system. Colour and finish to match Alpolic 'Milk White' [M7774-G30].
- (CLD6) Cladding, Type 6: Metal cladding system, express jointed. Prefinished coating system. Colour and finish to match Alpolic 'Charcoal' [M7991-G30].
- (COP1) Concrete, Off Form Finish, Type 1: Natural concrete, smooth board finish. Colour natural grey concrete mix. Penetrating clear matte sealer over.
- (COP2) Concrete, Off Form Finish, Type 2: Natural concrete, textured rough sawn timber board finish. Colour natural grey concrete mix. Penetrating clear matte sealer over.
- (CPC1) Concrete, Precast, Type 1: Smooth finish concrete wall elements. Colour 'lite & bribe' concrete mix with white oxide pigment additive. Penetrating clear matte sealer over.
- (CPC2) Concrete, Precast, Type 2: Decorative finish concrete wall elements, vertical square edged profiled form liner finish, 30mm spacing, 15mm depth equal to Reckit 2/77 'Tigris' profile. Colour equal to CPC1. Penetrating clear matte sealer over.
- (CPC3) Concrete, Precast, Type 3: Decorative finish concrete wall elements, vertical radius profiled form liner finish, 30mm spacing, 32mm diam., 53mm depth equal to Reckit 2/94 'Orinoco' profile. Colour equal to CPC1. Penetrating clear matte sealer over.
- (DPI) Decorative Pattern, Type 1: Custom decorative pattern integrated to finished glass surface to enhance privacy.
- (FT1) Facade Glazing System, Type 1: Street Level Entry Foyer & Associated Spaces Glass, clear. Framing system, front faced glazing system with decorative 300mm projecting vertical mullions. Aluminium, powder coat finish. Structural steel supports fully concealed. Colour and finish to match PCF1. Refer to Section J assessment for performance requirements. Reflectivity to be less than 20%.
- (FT2) Facade Glazing System, Type 2: Decorative Bay Window Elements Glass, clear. Front faced glazing system with shadow box glazing detail to conceal spandrel and slab edge elements. Aluminium, powder coat finish. Colour and finish to match PCF1. Refer to Section J assessment for performance requirements. Reflectivity to be less than 20%.
- (FT3) Facade Glazing System, Type 3: Window Wall Elements Glass, grey body tint. Front faced glazing system with shadow box glazing detail to conceal spandrel and slab edge elements. Aluminium, powder coat finish. Colour and finish to match PCF1. Refer to Section J assessment for performance requirements. Reflectivity to be less than 20%.
- (FT4) Facade Glazing System, Type 4: Infill Windows Glass, clear. Framing system, aluminium, powder coat finish. Mechanical louvers integral to frame system. Matching aluminium cover plates to conceal slab edges and adjacent wall elements. Framing colour to match PCF1. Refer to Section J assessment for performance requirements. Reflectivity to be less than 20%.
- (FT5) Facade Glazing System, Type 5: Infill Windows Glass, grey body tint. Framing system, aluminium, with decorative 150mm projecting vertical fins and aluminium slab extension. Powder coat finish, colour to match PCF1. Refer to Section J assessment for performance requirements. Reflectivity to be less than 20%.
- (G11) Gate, Type 1: Decorative timber and steel entry gate. Timber equal to CLD2 material and finish. Steel, paint finish, equal to PF3.
- (HR) Handrail, Type 1: Decorative handrail to street level interface. 32mm diam. steel, bronze finish.
- (LVR) Louvre Roof, Type 1: Fixed horizontal elliptical aluminium louvre system, 250mm profile. Angle set to shield view of plant from upper levels. Powder coat finish, colour and finish to match PCF1.
- (MDR) Metal Deck Roofing, Type 1: Standing seam profiled roofing system to match Lysaght 'Longline 305' profile. Colour to match Colorbond 'Monument'.
- (PCF1) Powdercoat Finish, Type 1: Colour and finish to match Dulux - Fluorocel 'Xtreme Charcoal' satin [9647297M].
- (PF1) Paint Finish, Type 1: Pigment stain paint system, equal to Keim Concretal Lasur System. Pigment. 30% concentration / opacity. Colour 'White / Weiss' [9872].
- (PF2) Paint Finish, Type 2: Pigment stain paint system, equal to Keim Concretal Lasur System. Pigment. 70% concentration / opacity. Colour 'Black / Schwartz' [9008].
- (PF3) Paint Finish, Type 3: Colour and finish to match Dulux - Micaceous Iron Oxide 'Mid Grey'.
- (PVI) Paving, Type 1: Natural stone paving to external steps, landings and foyer areas. Refer to Landscape documentation for further information.
- (SCI) Screen, Type 1: Fixed vertical elliptical aluminium louvre system, 250mm profile. Powder coat finish, colour and finish to match PCF1.
- (SG1) Signage, Type 1: Integral building identification signage, surface fixed onto building facade. Bronze finish. Size and extent as per elevation drawings.
- (VH) Ventilation Hatch, Type 1: Aluminium ventilation hatch integrated with glazing. Aluminium, powder coat finish. Colour and finish to match PCF1.

Note Refer to Landscape documentation for public domain and landscape areas for further information regarding materials and finishes selection.

NOTES

THIS DRAWING IS COPYRIGHT © OF TURNER. NO REPRODUCTION WITHOUT PERMISSION. UNLESS NOTED OTHERWISE, THIS DRAWING IS NOT FOR CONSTRUCTION. ALL DIMENSIONS AND LEVELS ARE TO BE CHECKED ON SITE PRIOR TO THE COMMENCEMENT OF WORK. INFORM TURNER OF ANY DISCREPANCIES FOR CLARIFICATION BEFORE PROCEEDING WITH WORK. DRAWINGS ARE NOT TO BE SCALED. USE ONLY FIGURED DIMENSIONS. REFER TO CONSULTANT DOCUMENTATION FOR FURTHER INFORMATION.

CLIENT

**Aboriginal Housing Company**  
83-123 Eveleigh Street Redfern NSW 2016 Australia

Rev	Date	Approved by	Revision Notes
R	07/06/17	DS	Issue for DA Submission - DRP
S	09/06/17	DS	Issue for DA Submission - DoP
T	12/12/17	DS	Issue for Information
U	19/04/18	DS	Amended DA Submission - DoP

Project Title  
**Col James - Student Accommodation**  
83-123 Eveleigh Street Redfern NSW 2016 Australia

Drawing Title  
**Materials and Finishes**  
Facade to Railway

Scale	Project No.	Drawn by	North
N15	16107	CB	
Status	Dwg No.	Rev	
Development Application	DA-950-006	U	

**TURNER**

Level 7 **ONE** Oxford Street  
Durlinghurst NSW 2010  
AUSTRALIA

T +61 2 8668 0000  
F +61 2 8668 0088  
turnerstudio.com.au



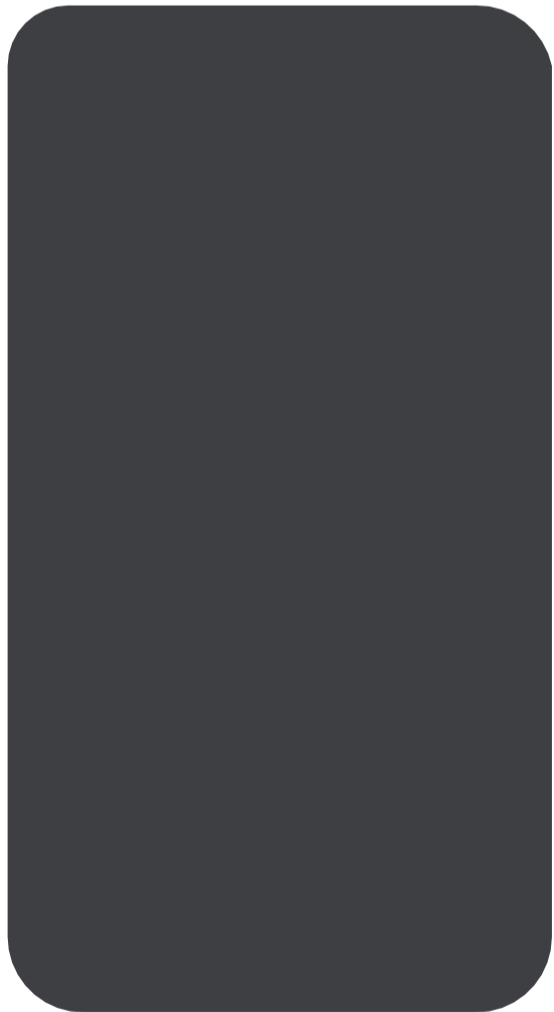
CLD1



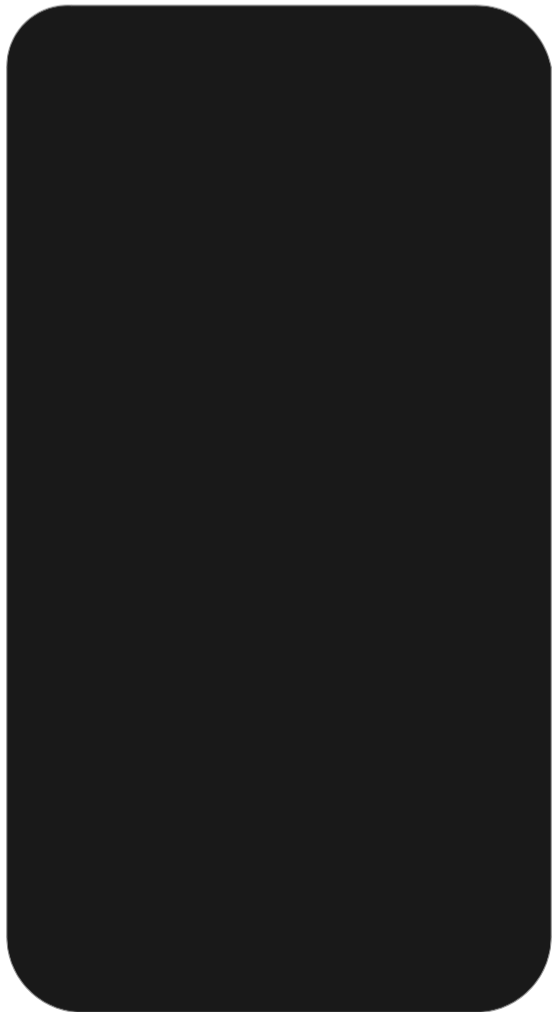
CLD1



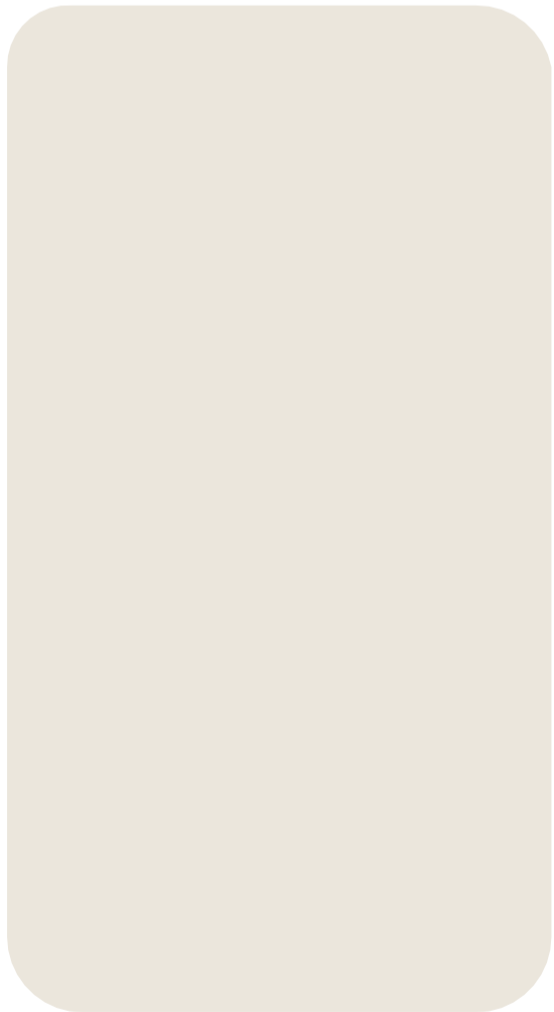
CLD1



CLD4



CLD6



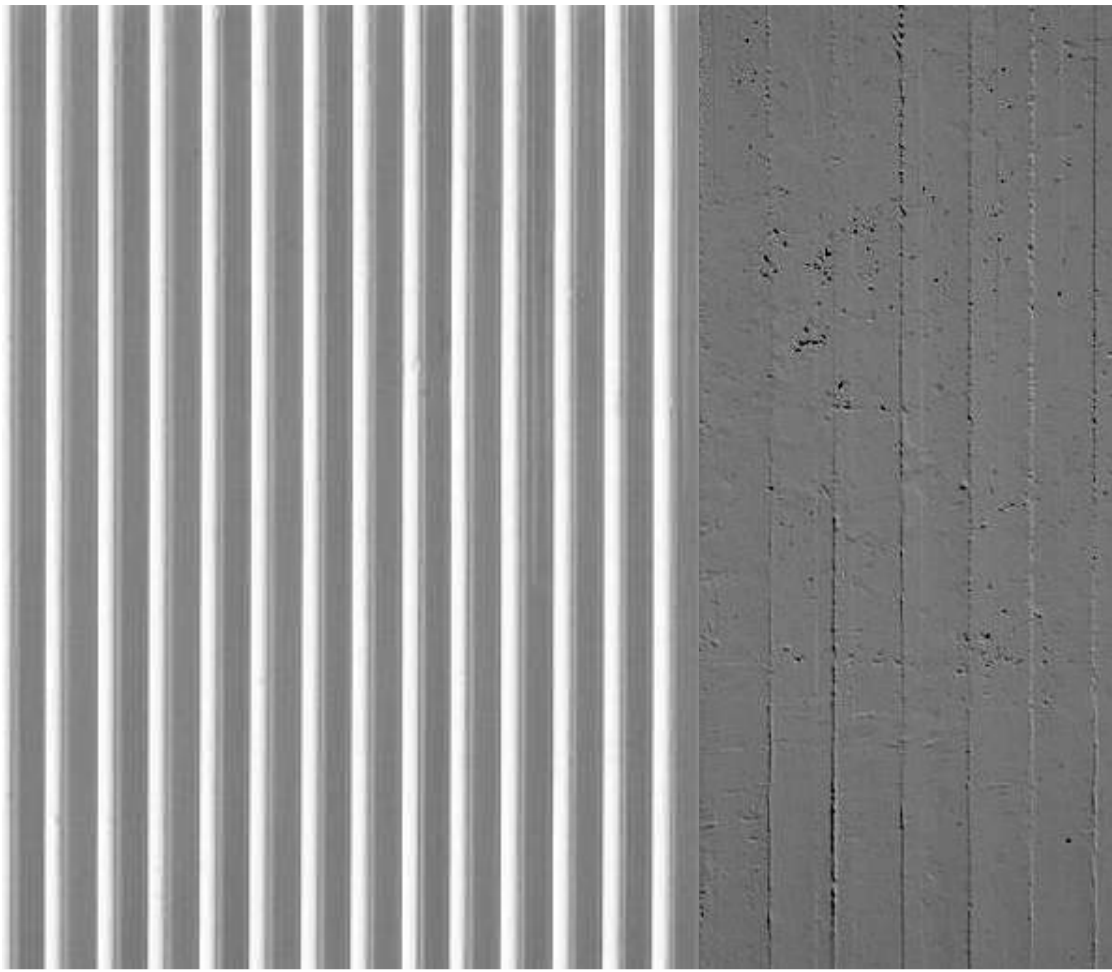
CLD5



CLD3

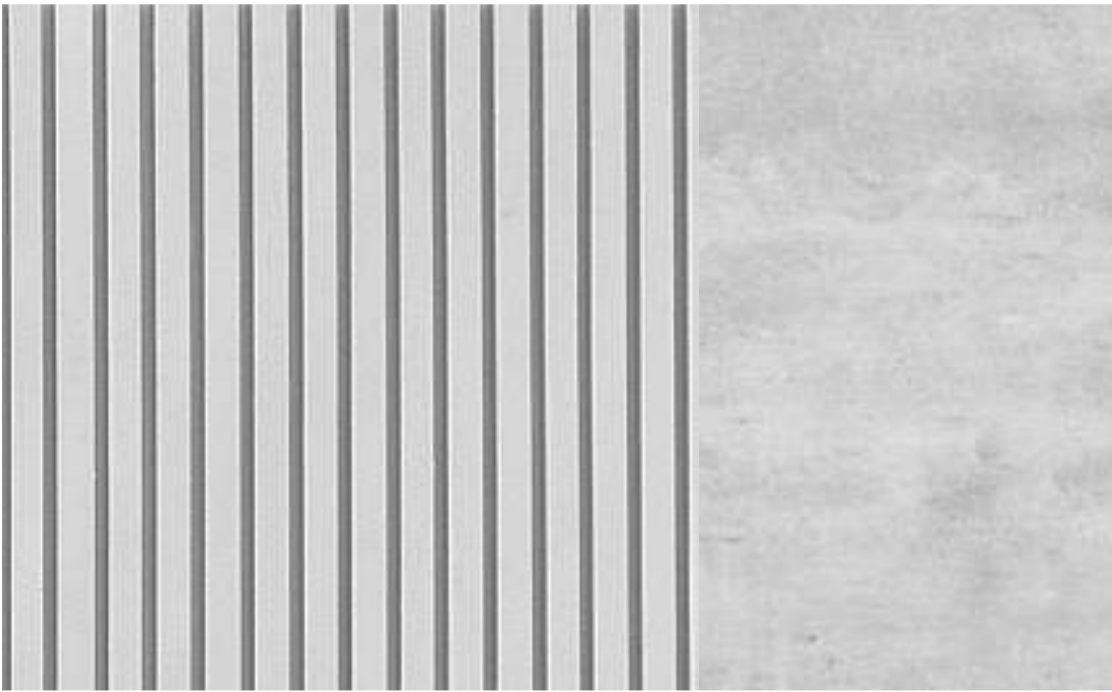


CLD3



CPC3

COF2

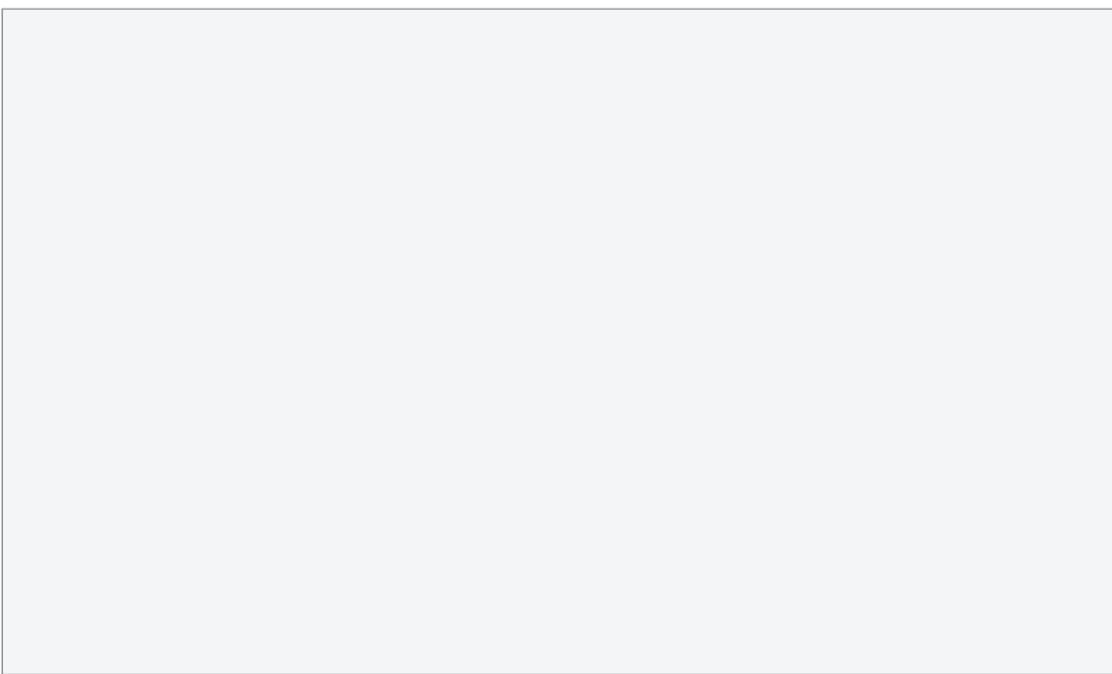


CPC2

COF1/CPC1



PF2



PF1



PF3



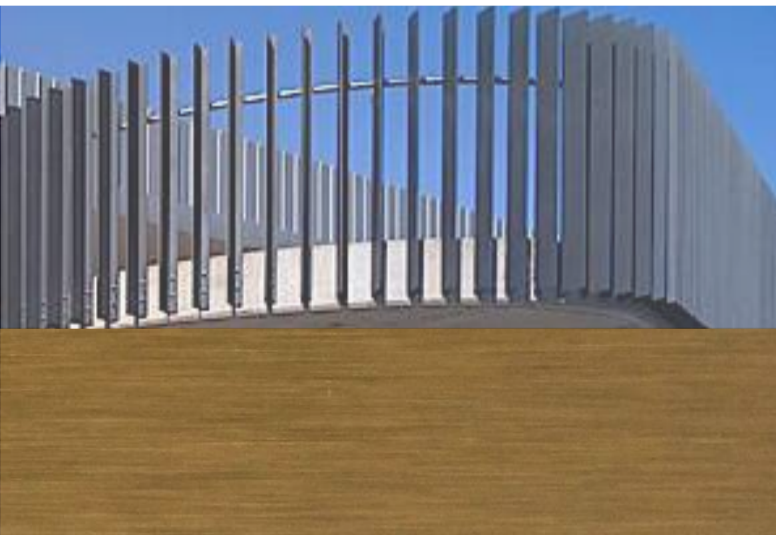
MDR1



MDR1



CLD2



BAL1/HR1



PCF1



AWN1

Legend

- (ART1) Art Feature, Type 1: Painted soffit to main entry lobby.
- (ART2) Art Feature, Type 2: Embossed feature symbol into precast panel.
- (ART3) Art Feature, Type 3: Existing art wall, preserved.
- (AWN) Awning, Type 1: Folded steel awning with decorative motif laser cut into leading edge. Paint finish equal to PF3.
- (BAL) Balustrade, Type 1: Vertical 100 x 10 steel baluster, no top rail. Balusters angled at 90°. Powder coat finish, colour and finish to match PCF1.
- (BAL) Balustrade, Type 2: Frameless clear glass balustrade system with separate steel flat bar handrail / stanchion support behind. Colour and finish to match PCF1.
- (CLD) Cladding, Type 1: Stone cladding system, random length stretcher bond. Finish split face and / or exfoliate finish. Coursing height varies between 75 and 150mm. Random stone selection to match Hawksbury sandstone, Port Fairy Bluestone and off white / grey speckled granite.
- (CLD) Cladding, Type 2: Timber cladding system, vertical 'V' jointed 90mm wide. Service doors integrated to match. Timber equal to Spotted Gum in appearance. Natural colour with pigmented oil finish.
- (CLD) Cladding, Type 3: Terracotta facade tile system, 175mm horizontal profile, colour range varies to suit facade concept and surface finish varies between glazed and natural. Facade system equal to NBR Architectural Terracotta. Colours and finishes equal to TERRAART natural and engobe colour range.
- (CLD) Cladding, Type 4: Metal cladding system, express jointed, with concealed essential service doors and louvers. Prefinished coating system. Colour and finish to match Alpolic 'Slate Grey' [MJ254-G30].
- (CLD) Cladding, Type 5: Metal cladding system, express jointed. Prefinished coating system. Colour and finish to match Alpolic 'Milk White' [M7774-G30].
- (CLD) Cladding, Type 6: Metal cladding system, express jointed. Prefinished coating system. Colour and finish to match Alpolic 'Charcoal' [M7991-G30].
- (CON) Concrete, Off Form Finish, Type 1: Natural concrete, smooth board finish. Colour natural grey concrete mix. Penetrating clear matte sealer over.
- (CON) Concrete, Off Form Finish, Type 2: Natural concrete, textured rough sawn timber board finish. Colour natural grey concrete mix. Penetrating clear matte sealer over.
- (CON) Concrete, Precast, Type 1: Smooth finish concrete wall elements. Colour 'lite & bribe' concrete mix with white oxide pigment additive. Penetrating clear matte sealer over.
- (CON) Concrete, Precast, Type 2: Decorative finish concrete wall elements, vertical square edged profiled form liner finish, 30mm spacing, 15mm depth equal to Reckli 2/77 'Tigris' profile. Colour equal to CPC1. Penetrating clear matte sealer over.
- (CON) Concrete, Precast, Type 3: Decorative finish concrete wall elements, vertical radius profiled form liner finish, 30mm spacing, 32mm diam., 53mm depth equal to Reckli 2/94 'Orinoco' profile. Colour equal to CPC1. Penetrating clear matte sealer over.
- (CON) Concrete, Precast, Type 4: Custom decorative pattern integrated to finished glass surface to enhance privacy.
- (F1) Façade Glazing System, Type 1: Street Level Entry Foyer & Associated Spaces Glass, clear. Framing system, front faced glazing system with decorative 300mm projecting vertical mullions. Aluminium, powder coat finish. Structural steel supports fully concealed. Colour and finish to match PCF1. Refer to Section J assessment for performance requirements. Reflectivity to be less than 20%.
- (F2) Façade Glazing System, Type 2: Decorative Bay Window Elements Glass, clear. Front faced glazing system with shadow box glazing detail to conceal spandrel and slab edge elements. Aluminium, powder coat finish. Colour and finish to match PCF1. Refer to Section J assessment for performance requirements. Reflectivity to be less than 20%.
- (F3) Façade Glazing System, Type 3: Window Wall Elements Glass, grey body tint. Front faced glazing system with shadow box glazing detail to conceal spandrel and slab edge elements. Aluminium, powder coat finish. Colour and finish to match PCF1. Refer to Section J assessment for performance requirements. Reflectivity to be less than 20%.
- (F4) Façade Glazing System, Type 4: Infill Windows Glass, clear. Framing system, aluminium, powder coat finish. Mechanical louvers integral to frame system. Matching aluminium cover plates to conceal slab edges and adjacent wall elements. Framing colour to match PCF1. Refer to Section J assessment for performance requirements. Reflectivity to be less than 20%.
- (F5) Façade Glazing System, Type 5: Infill Windows Glass, grey body tint. Framing system, aluminium, powder coat finish, colour to match PCF1. Colour and finish to match Dulux - Fluorocel 'Xtreme Charcoal' satin [9647297M].
- (G1) Gate, Type 1: Decorative timber and steel entry gate. Timber equal to CLD2 material and finish. Steel, paint finish, equal to PF3.
- (HR) Handrail, Type 1: Decorative handrail to street level interface. 32mm diam. steel, bronze finish.
- (PF) Paint Finish, Type 3: Colour and finish to match Dulux - Micaceous Iron Oxide 'Mid Grey'.
- (PV) Paving, Type 1: Natural stone paving to external steps, landings and foyer areas. Refer to Landscape documentation for further information.
- (SC) Screen, Type 1: Fixed vertical elliptical aluminium louvre system, 250mm profile. Powder coat finish, colour and finish to match PCF1.
- (SG) Signage, Type 1: Integral building identification signage, surface fixed onto building facade. Bronze finish. Size and extent as per elevation drawings.
- (VH) Ventilation Hatch, Type 1: Aluminium ventilation hatch integrated with glazing. Aluminium, powder coat finish. Colour and finish to match PCF1.

Note Refer to Landscape documentation for public domain and landscape areas for further information regarding materials and finishes selection.

NOTES  
THIS DRAWING IS COPYRIGHT © OF TURNER. NO REPRODUCTION WITHOUT PERMISSION. UNLESS NOTED OTHERWISE THIS DRAWING IS NOT FOR CONSTRUCTION. ALL DIMENSIONS AND LEVELS ARE TO BE CHECKED ON SITE PRIOR TO THE COMMENCEMENT OF WORK. INFORM TURNER OF ANY DISCREPANCIES FOR CLARIFICATION BEFORE PROCEEDING WITH WORK. DRAWINGS ARE NOT TO BE SCALED. USE ONLY FIGURED DIMENSIONS. REFER TO CONSULTANT DOCUMENTATION FOR FURTHER INFORMATION.

CLIENT  
**Aboriginal Housing Company**  
83-123 Eveleigh Street Redfern NSW 2016 Australia

Rev	Date	Approved by	Revision Notes
R	07/06/17	DS	Issue for DA Submission - DRP
S	09/06/17	DS	Issue for DA Submission - DoP
T	12/12/17	DS	Issue for Information
U	19/04/18	DS	Amended DA Submission - DoP

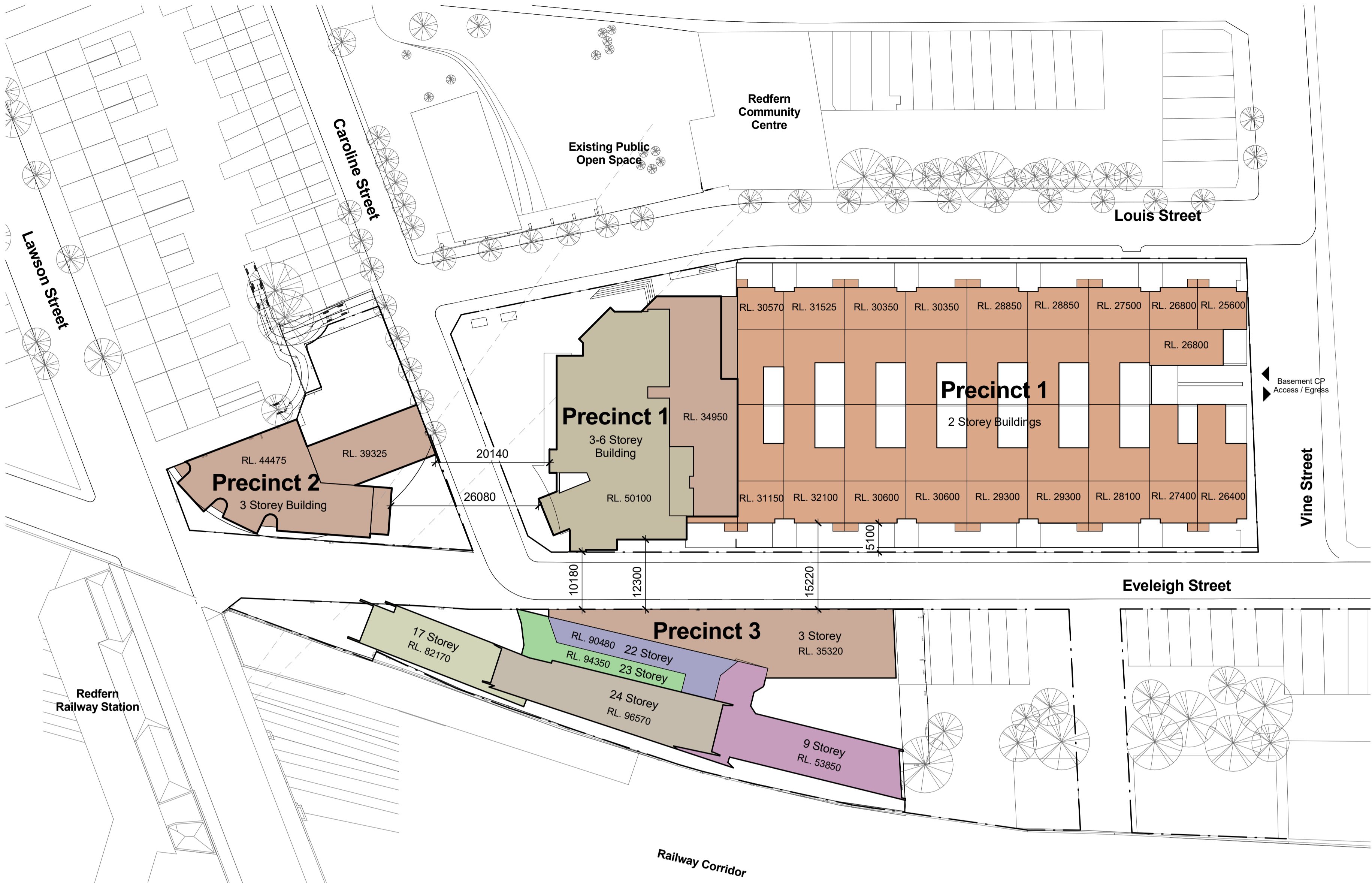
Project Title  
**Col James - Student Accommodation**  
83-123 Eveleigh Street Redfern NSW 2016 Australia

Drawing Title  
**Materials and Finishes Sample Board**

Scale	Project No.	Drawn by	North
N1S	16107	CB	
Status	Dwg No.	Rev	
Development Application	DA-960-001	U	

**TURNER**

Level 7 ONE Oxford Street  
Durlinghurst NSW 2010  
AUSTRALIA  
T +61 2 8668 0000  
F +61 2 8668 0088  
turnerstudio.com.au



PRECINCT 1

Site Area	6776m²
Maximum FSR	1.5:1
Permissible FSR	10164m²
Maximum Residential FSR	0.75:1
Permissible Residential FSR	5082m²
Maximum Building Height	3 Storeys

Proposed Concept

Gym	GFA 905m²
Retail / Gallery	340m²
<b>Total Gym, Gallery + Retail</b>	<b>1245m²</b>
<b>Residential</b>	
Townhouses	4570m²
Apartments	2770m²
<b>Total Residential</b>	<b>7340m²</b>
Proposed Residential FSR	1.2:1
<b>Total GFA</b>	<b>8585m²</b>
Proposed Max FSR	1.35:1

<b>Proposed Building Heights</b>	
Townhouses	2 Storeys
Mixed Use Building	3-6 Storeys

PRECINCT 2

Site Area	1303m²
Maximum FSR	1.5:1
Maximum Residential FSR	0.75:1
Permissible FSR	977m²
Maximum Building Height	3 Storeys

Proposed Concept

Child Care	GFA 365m²
Retail	476m²
Commercial	739m²
AHC Offices	240m²
<b>Total GFA</b>	<b>1820m²</b>
Proposed Max FSR	1.40:1
Proposed Residential FSR	Nil
<b>Proposed Building Height</b>	<b>3 Storeys</b>

PRECINCT 3

Site Area	2385m²
Maximum FSR	2:1
Maximum Residential FSR	1:1
Permissible FSR	4770m²
Maximum Building Height	5 Storeys

Proposed Concept

Student Housing	GFA 365m²
Proposed FSR	16530m²
<b>Total GFA</b>	<b>16530m²</b>
<b>Proposed Building Height</b>	<b>3-24 Storey</b>

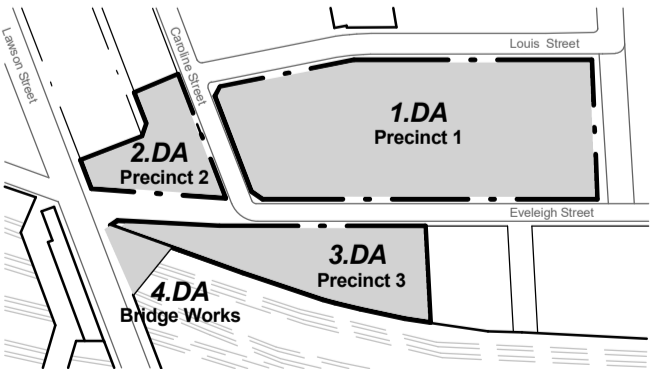
TOTAL SITE AREA

Precinct 1	8585m²
Precinct 2	1820m²
Precinct 3	16530m²
<b>Total Site Area</b>	<b>26935m²</b>

Carparking

Access From Vine Street To Basement Parking In Precinct 1	
Private Spaces (Level B1)	115 Total
(incl. 10 Accessible Spaces)	
Restricted Street Spaces (P1)	8 Total
(Dedicated To P2 - Child Care Drop Off)	

Legend - Building Heights	
1 Storey	
2 Storeys	
3 Storeys	
4 Storeys	
5 Storeys	
6 Storeys	
9 Storeys	
17 Storeys	
22 Storeys	
23 Storeys	
24 Storeys	



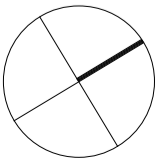
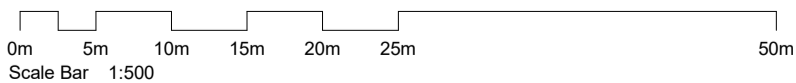
General Notes:	
Architectural Drawings To Be Read In Conjunction With All Other Consultants Detailed Drawings, Reports And Specifications.	
All Levels Indicated Taken To Australian Height Datum (AHD)	
Refer To ODA900 For Abbreviation Schedule And Proposed Outline Colour, Section Lines And Finishes Selections.	
Site Underlay Based On Survey Carried Out By Denny Linker For Previous Application and Subsequent Survey Work Carried Out By Daw & Walton Consulting Surveyors - Refer To Drawing 302808.	



LEVEL 4, 111-117 DEVONSHIRE STREET, SURRY HILLS, NSW 2010 T.02 9318 8400 F.02 9318 8480  
STEPHEN J. NORDON REGISTRATION No. NSW - 4704 GRAHAM P. JAGO REGISTRATION No. NSW - 4926

Development Application		
Rev	Description	Date
A	Preliminary DA Issue For Review	11.07.11
B	Preliminary DA Issue For Review	20.07.11
C	Issue For PEA	22.07.11
D	Preliminary Environmental Assessment Issue (PEA)	28.07.11
E	Development Application Issue	14.12.11
F	Dwp Amendments	24.08.12
G	PP Update	26.10.17
H	Mass Levels Added	04.05.18

NOT For Construction

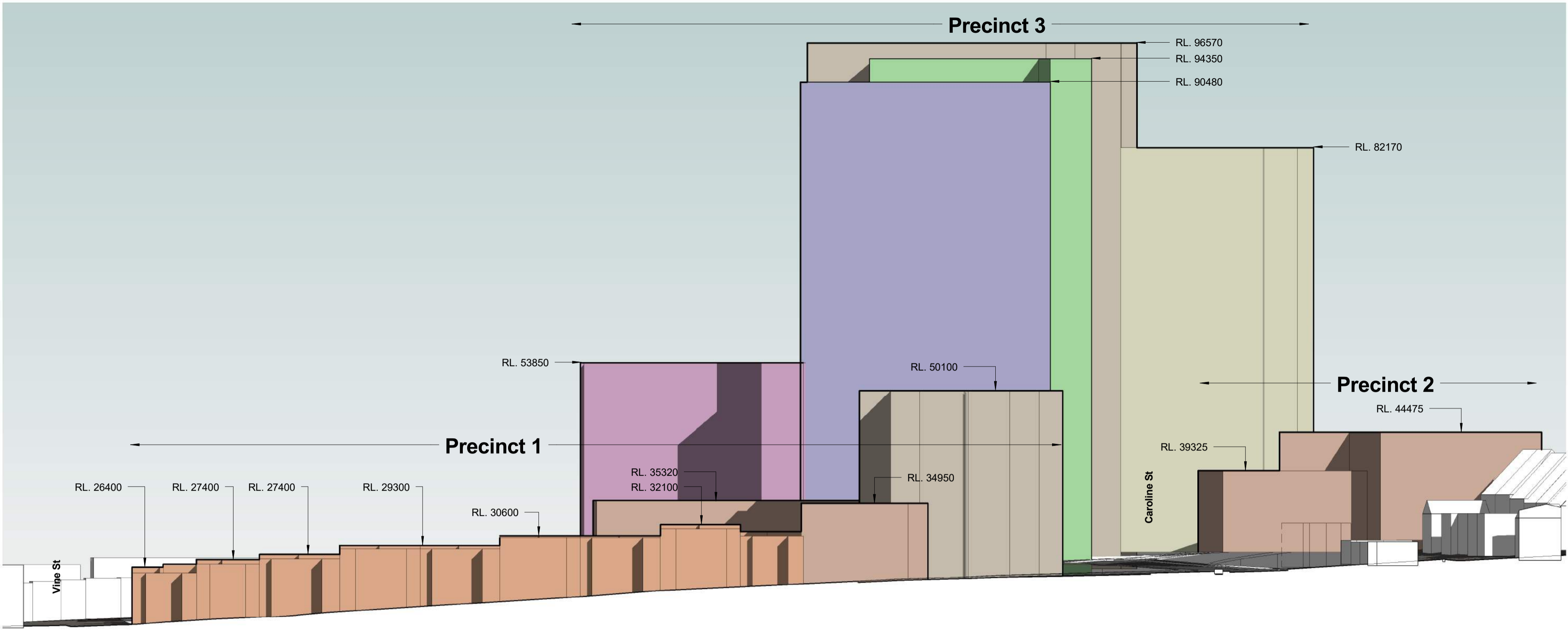


J:\DEI00210 Pemulwuy Project\4 NJA Documentation\5 CAD\03 DA\01 Model\02 17.10.23 Planning Proposal\DEI00210\_JDA Site Master 171023.rvt

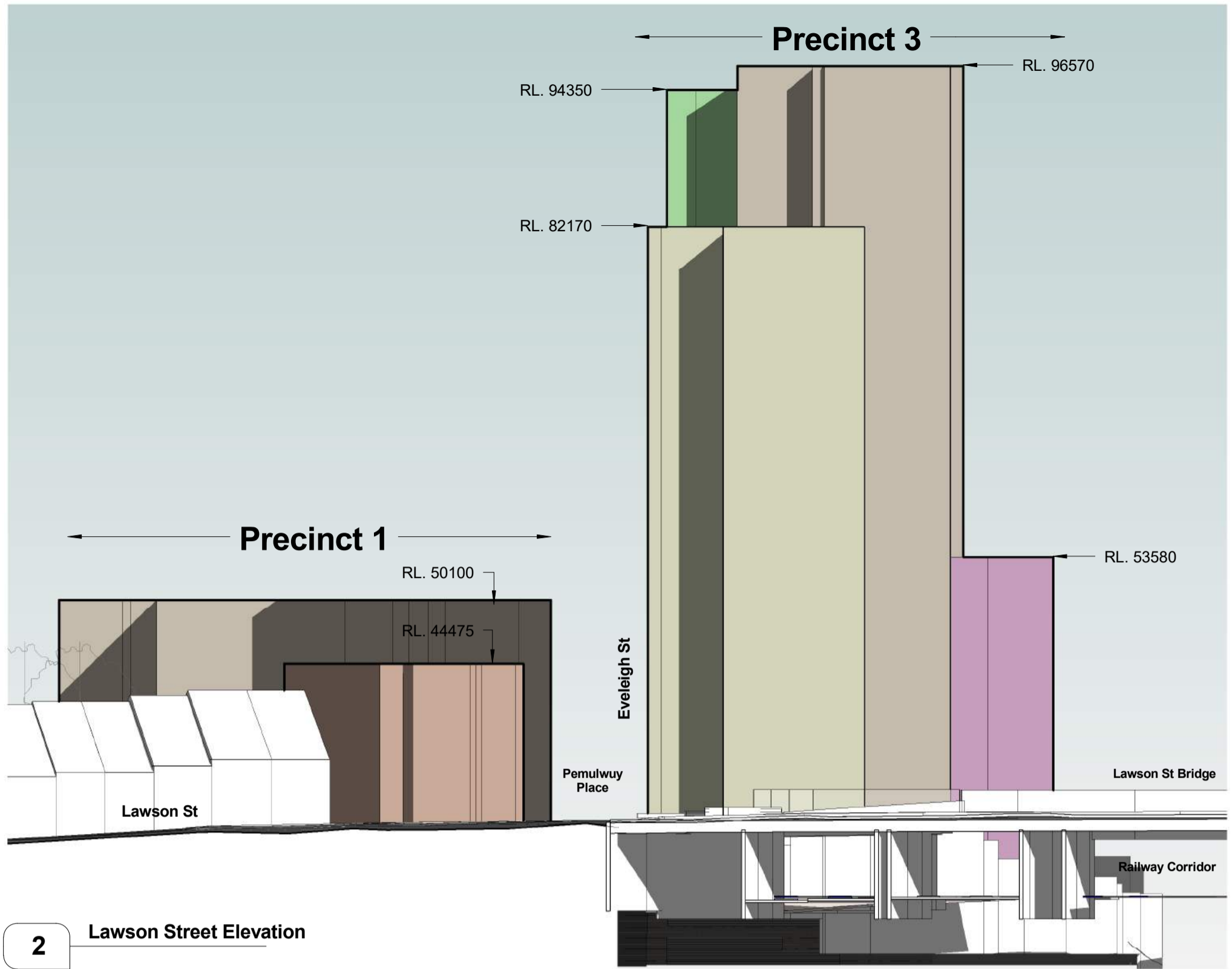
Pemulwuy Project, Mixed Use Development, REDFERN

FSR & Building Heights

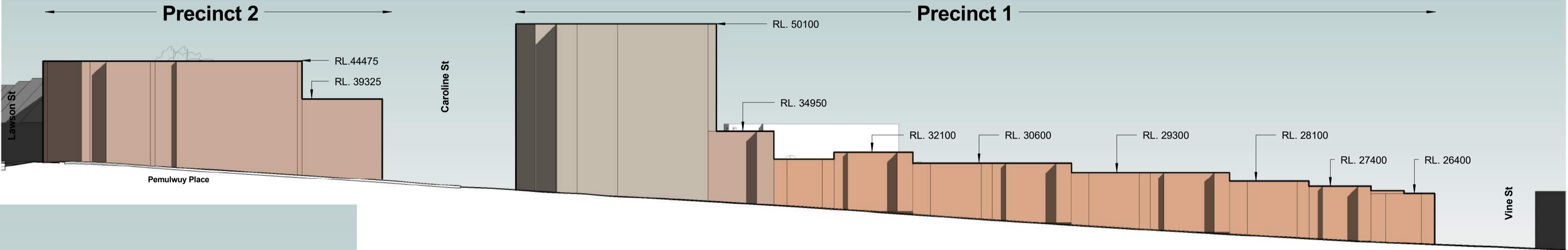
JOB No.	DEI00210
DATE	June 2010
SCALE	A1 @ As indicated
DWG No.	ODA012 H



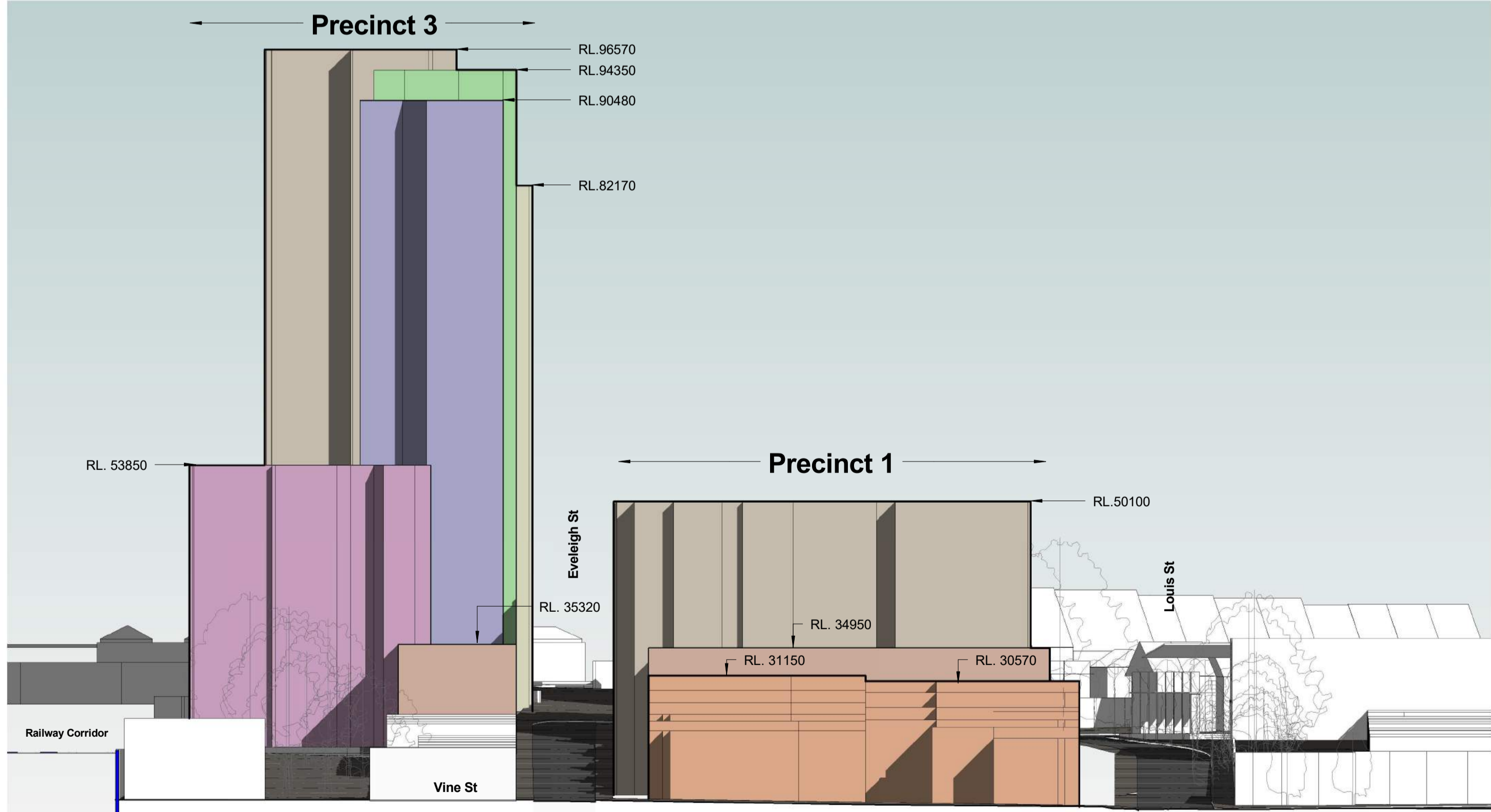
3 Louis Street Elevation



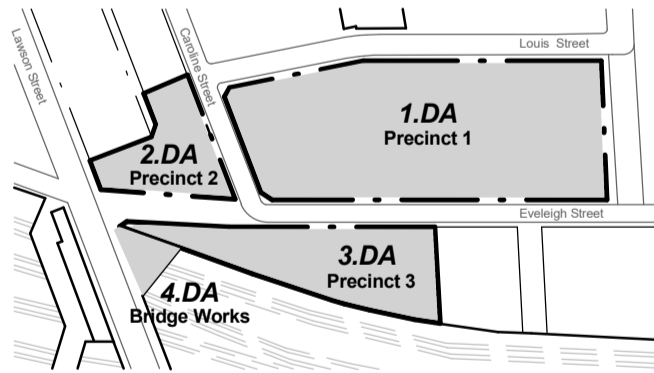
2 Lawson Street Elevation



1 Eveleigh Street Elevation



4 Vine Street Elevation



**General Notes:**

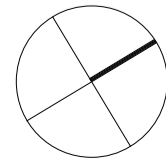
Architectural Drawings To Be Read In Conjunction With All Other Consultants Detailed Drawings, Reports And Specifications.

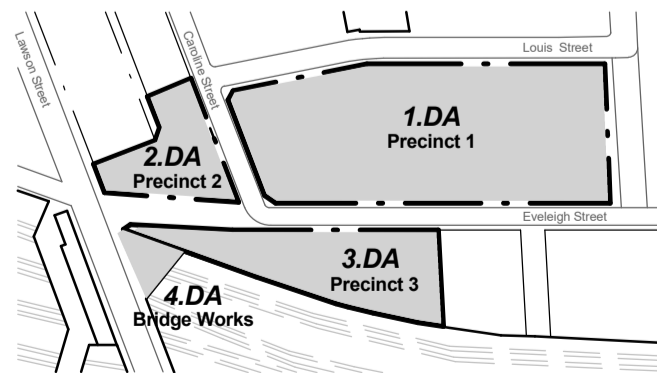
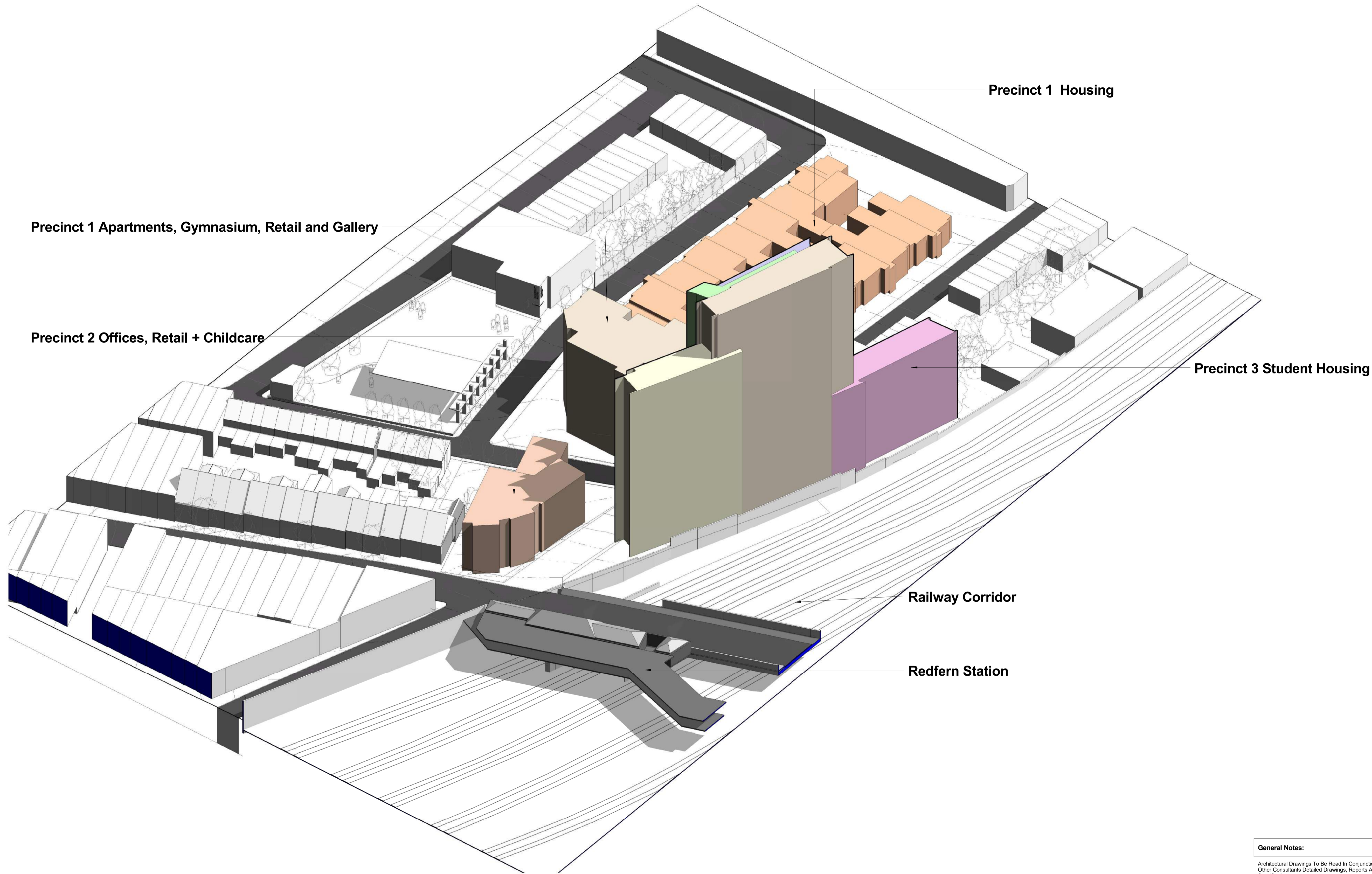
All Levels Indicated Taken To Australian Height Datum (AHD)

Refer To ODA900 For Abbreviation Schedule And Proposed Outline Colour Selections And Finishes Selections.

Site Underlay Based On Survey Carried Out By Denny Linker For Previous Application And Subsequent Survey Work Carried Out By Daw & Walton Consulting Surveyors - Refer To Drawing 302808.

Development Application		
Rev	Description	Date
A	Preliminary DA Issue For Review	20.07.11
B	Development Application Issue	14.12.11
C	PP Update	26.10.17
D	Mass Levels Added	04.05.18





**General Notes:**

Architectural Drawings To Be Read In Conjunction With All Other Consultants Detailed Drawings, Reports And Specifications.

All Levels Indicated Taken To Australian Height Datum (AHD)

Refer To ODA900 For Abbreviation Schedule And Proposed Outline Colour Selections And Finishes Selections.

Site Underlay Based On Survey Carried Out By Denny Linker For Previous Application and Subsequent Survey Work Carried Out By Daw & Walton Consulting Surveyors - Refer To Drawing 302808.



CNR PARRAMATTA RD & JOHNSTON ST - PO BOX 254 - ANNANDALI - NSW 2038 - T.02 9517 2822 F.02 9517 2833  
STEPHEN J. NORDON REGISTRATION No. NSW - 4704 GRAHAM P. JAGO REGISTRATION No. NSW - 4926

Development Application		
Rev	Description	Date
A	Preliminary DA Issue For Review	11.07.11
B	Preliminary DA Issue For Review	20.07.11
C	Development Application Issue	14.12.11
D	PP Update	26.10.17
E	Mass Levels Added	04.05.18

Pemulwuy Project, Mixed Use Development, REDFERN

TITLE	J:\DEI00210 Pemulwuy Project\4 NJA Documentation\5 CAD\03 DA\01 Model\02 17.10.23 Planning Proposal\DEI00210_ODA Site Master 171023.rvt		JOB No.	DEI00210
			DATE	June 2010
			SCALE	A1 @ 1:100
			DWG No.	ODA600 E

Massing View