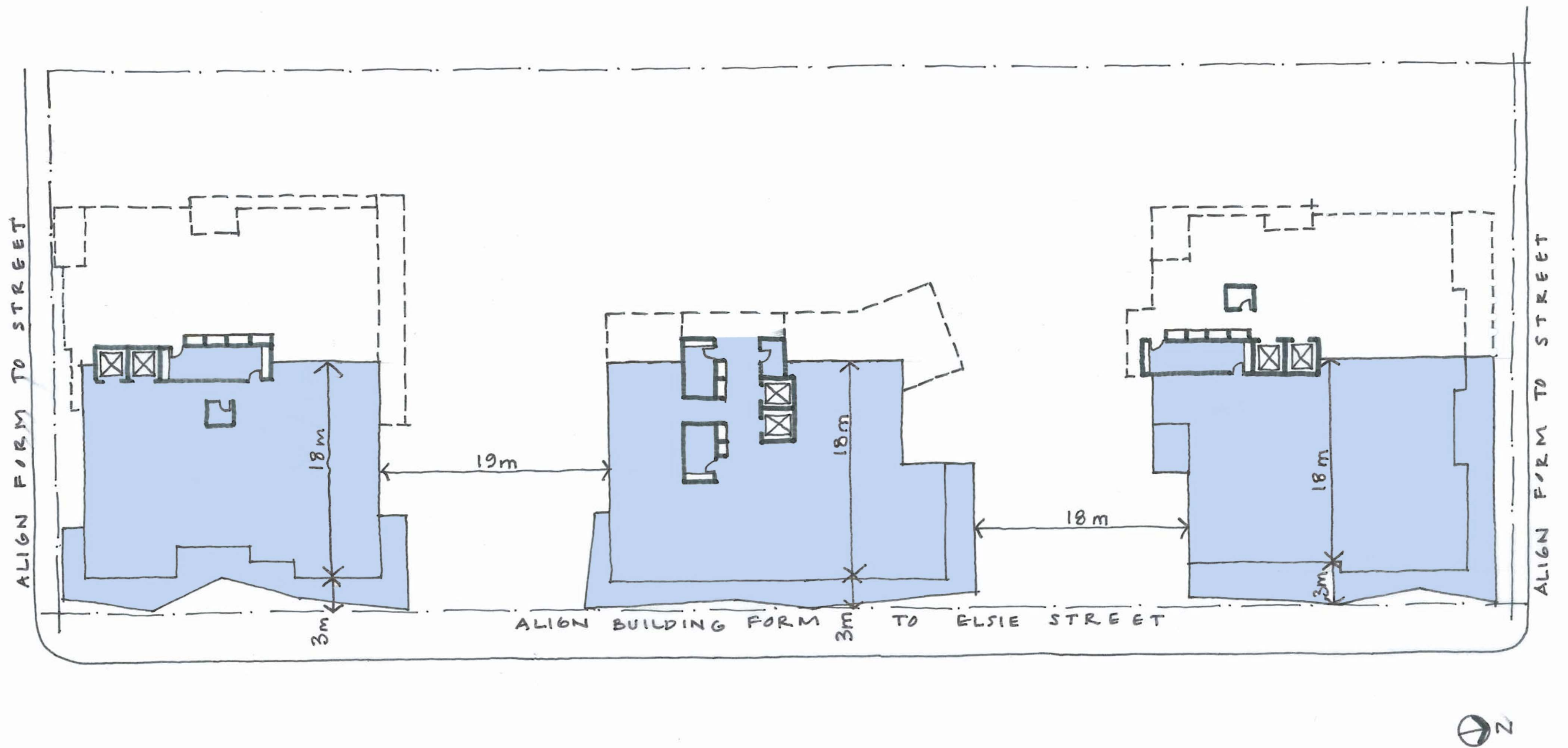


- 1**
- Building Form orientated to street edges
  - Middle Tower becomes broad and squat in proportion
  - Core location awkward for Tower C
  - Floorspace loss in plan results in increased height to Towers B & C



- 2**
- Building Form orientated to street edges
  - Core location awkward for Towers A & C
  - Floorspace loss in plan results in increased height to Towers B & C