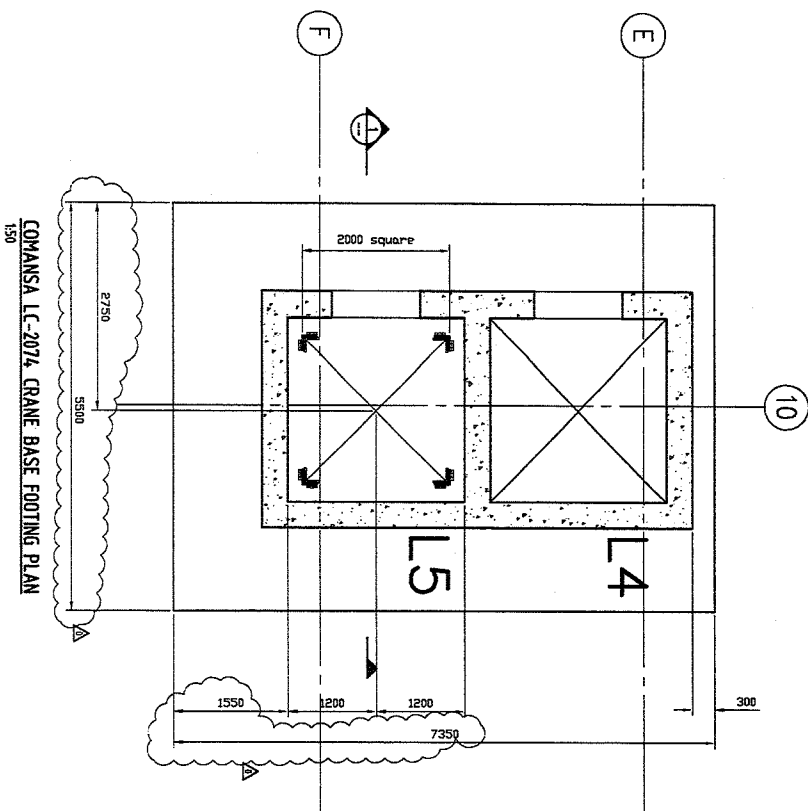


COMANSA LC2074 - STAGE 1  
SCALE - 1:1000

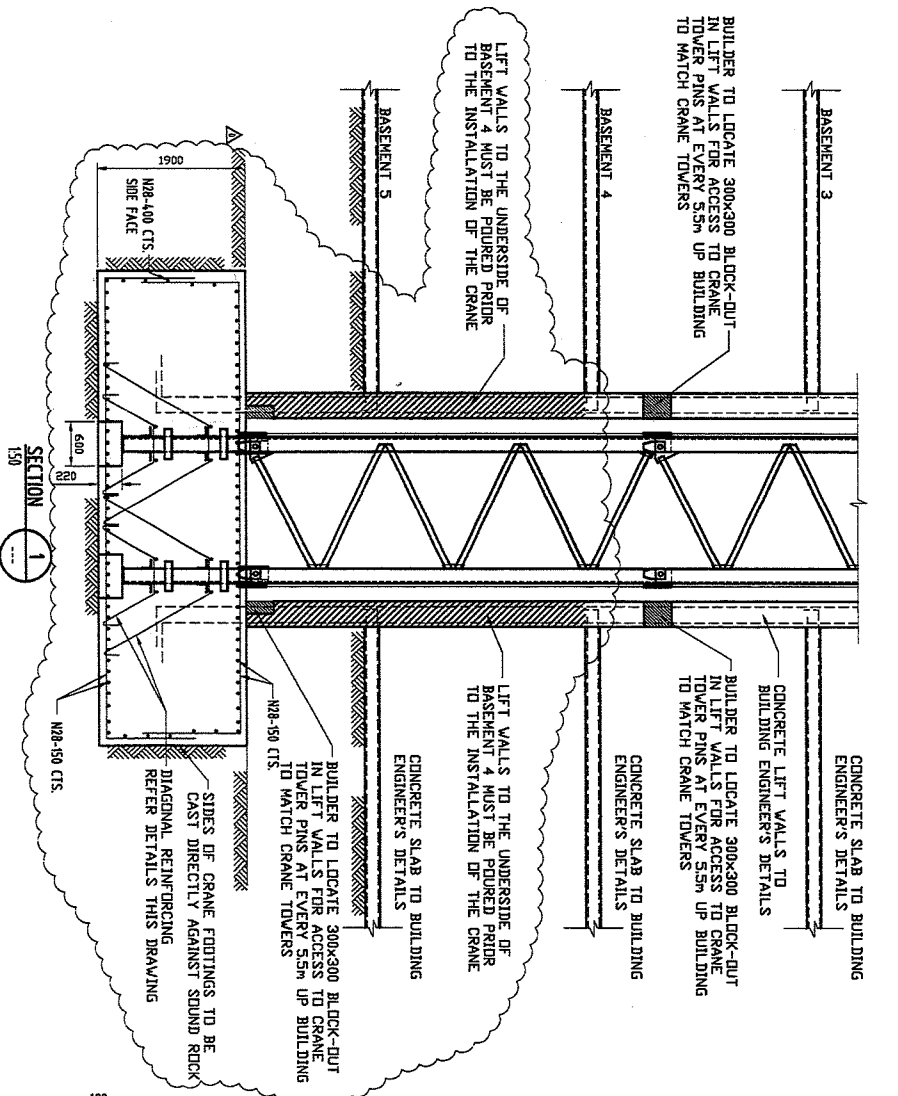
COMANSA LC2074 - STAGE 2  
SCALE - 1:1000



COMANSA LC-2074 CRANE BASE FOOTING PLAN  
SCALE - 1:1000

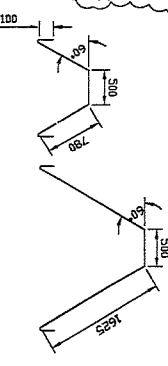
NOTE: MAXIMUM CRANE FREESTAND HOOK HEIGHT = 63.1m

- FOUNDATION NOTES:
1. MINIMUM ULTIMATE BEARING UNDER CRANE FOOTING TO BE 500kPa. FOUNDATION MATERIAL TO BE INSPECTED AND APPROVED BY A GEOTECHNICAL ENGINEER PRIOR TO INSTALLATION OF REINFORCING.
  2. CRANE PAD FOOTING CONCRETE STRENGTH TO BE 30MPa AT TIME OF CRANE INSTALLATION. CONCRETE BATCH PLANT TO PROVIDE CONCRETE MIX TO SUIT BUILDER'S PROGRAM.



SECTION 1  
SCALE - 1:1000

DIAGONAL REINFORCING DETAILS  
NOTE:  
1. ALL BARS TO BE N16  
2. 4 LIFT REQUIRED EACH PER LEG  
(i.e. 16 TOTAL OF EACH SIZE)



- BASE INSTALLATION PROCEDURE:
1. BUILDER TO EXCAVATE CRANE BASE FOOTING TO 1500mm DEPTH.
  2. CRANE ENGINEER TO INSPECT BOTTOM REINFORCING.
  3. BUILDER TO POUR 1500mm DEPTH OF 30MPa CONCRETE.
  4. BUILDER TO COMPLETE INSTALLATION OF REINFORCING INCLUDING DIAGONAL BARS AND TOP LAYER.
  5. BUILDER TO COMPLETE INSTALLATION OF REINFORCING INCLUDING DIAGONAL BARS AND TOP LAYER.
  6. BUILDER TO POUR CONCRETE WITH ADEQUATE STRENGTH TO ACHIEVE STRENGTH AT TIME OF CRANE INSTALLATION.

COMANSA LC-2074 - CRANE FOOTINGS  
at 45-48 George St, BURWOOD

AS SHOWN

DATE: 2004

DRAWN: H. O'HAN

CHECKED: H. O'HAN

06/77

502

0

© O'Han Consulting Pty. Ltd.  
Structural & Civil Engineers  
Suite 1, 31 Burg Road, Werribee VIC 3060  
Telephone: 03 9771 3411  
Fax: 03 9771 3412  
www.ohanconsulting.com.au

VERIFICATION

By: [Signature]  
Date: [Date]

DATE: 2004

REVISION: 0

REVISION: 1

REVISION: 2

REVISION: 3

REVISION: 4

REVISION: 5

REVISION: 6

REVISION: 7

REVISION: 8

REVISION: 9

REVISION: 10

REVISION: 11

REVISION: 12

REVISION: 13

REVISION: 14

REVISION: 15

REVISION: 16

REVISION: 17

REVISION: 18

REVISION: 19

REVISION: 20

REVISION: 21

REVISION: 22

REVISION: 23

REVISION: 24

REVISION: 25

REVISION: 26

REVISION: 27

REVISION: 28

REVISION: 29

REVISION: 30

REVISION: 31

REVISION: 32

REVISION: 33

REVISION: 34

REVISION: 35

REVISION: 36

REVISION: 37

REVISION: 38

REVISION: 39

REVISION: 40

REVISION: 41

REVISION: 42

REVISION: 43

REVISION: 44

REVISION: 45

REVISION: 46

REVISION: 47

REVISION: 48

REVISION: 49

REVISION: 50

REVISION: 51

REVISION: 52

REVISION: 53

REVISION: 54

REVISION: 55

REVISION: 56

REVISION: 57

REVISION: 58

REVISION: 59

REVISION: 60

REVISION: 61

REVISION: 62

REVISION: 63

REVISION: 64

REVISION: 65

REVISION: 66

REVISION: 67

REVISION: 68

REVISION: 69

REVISION: 70

REVISION: 71

REVISION: 72

REVISION: 73

REVISION: 74

REVISION: 75

REVISION: 76

REVISION: 77

REVISION: 78

REVISION: 79

REVISION: 80

REVISION: 81

REVISION: 82

REVISION: 83

REVISION: 84

REVISION: 85

REVISION: 86

REVISION: 87

REVISION: 88

REVISION: 89

REVISION: 90

REVISION: 91

REVISION: 92

REVISION: 93

REVISION: 94

REVISION: 95

REVISION: 96

REVISION: 97

REVISION: 98

REVISION: 99

REVISION: 100