



0 2.5 5
Kilometres

APPENDIX A

MARINA SURVEY DATA, DECEMBER 2006

MARINA	Marmong Point	Royal Motor Yacht Club	Wyee Point Marina	Pelican Marina	Marks Point Marina	Lake Macquarie Yacht Club
Total Number of Wet Berths						
- Floating Pontoons	160	0	0	17*	0	0
- Fixed Pier Type	0	51	36	0	62	76
Occupancy % on Survey Date	100%	98%	75%	59%	100% *	100%
Average Occupancy % for Year	98%	90-95%	75%	59%	100% *	100%
No. sailing vessels	31%	36%	50%	10%	15%	90%
No. power vessels	69%	64%	50%	90%	85%	10%
Waiting List for Berths Y/N	N	Y	N	N	Y	Y
Number Boats on Waiting List	0	4	0	0	13	27 *
Size Range Boats on Wait List	N/A	9m - 12m	N/A	N/A	6m - 15m	10.5 - 11m
<u>Marina Berth Size Distribution</u>						
- 8m (26')	2%	6%	majority (90%)	majority (80%)	20%	majority (100%) **
- 10m (34')	86%	31%	majority (90%)	majority (80%)	60%	majority (100%) **
- 12m (40')	6%	63%	majority (90%)	majority (80%)	15%	majority (100%) **
- 14m (46')	3%	0%	remaining 10%	remaining 20%	5%	0% ***
- 16m (52')	2%	0%	remaining 10%	remaining 20%	**	0% ***
- 18m (60')	1%	0%	remaining 10%	0%	**	0% ***
- 20m (66')	0%	0%	0%	0%	**	0% ***
- 25m (82')	0%	0%	0%	0%	**	0% ***
- 30m & above (100' & above)	0%	0%	0%	0%	**	0% ***
<u>Other Facilities:</u>						
- Guest Amenities/Bathrooms	Y	Y	Y	Y	Y	Y
- Power/Water to Berths	Y	Y	Y	Y	Y	Y
- Hard Stand Boats (Number)	50 *	N	10	N	N	21
- Dry Stack Boats (Number)	0	0	0	0	0	0
- Sewage Pump-out (Y/N)	N	N	N	Y	N	Y
- Slipway (Y/N)	Y	N	N	N	Y	Y
- Repair Facilities (Y/N)	Y	N*	N	N	Y	Y
- Swing Moorings (Number)	13	10	4	0	26	18

MARINA	Marmong Point	Royal Motor Yacht Club	Wyee Point Marina	Pelican Marina	Marks Point Marina	Lake Macquarie Yacht Club
<u>Highest Wave Climate (Mtrs)</u> - From North - From Nor-East - From East - From Sou-East - From South - From Sou-West - From West - From Nor-West		1** 1** 1** 1**	0.5	0.5** 0.5**		1m 1m 1m
	no waves ***				Y	

* 20 of the 50
are dry
storage up to
24' on racks

** varies with
position

*** tidal range
6 inches

* by contract
only

** up to 1.5m
under
extreme
conditions

* plus 4
emergency
on outside

** plus tidal
as well

* 100%
berths, 70*
moorings

** can be
accommodat
ed on swing
moorings

* yachts 14,
power 13

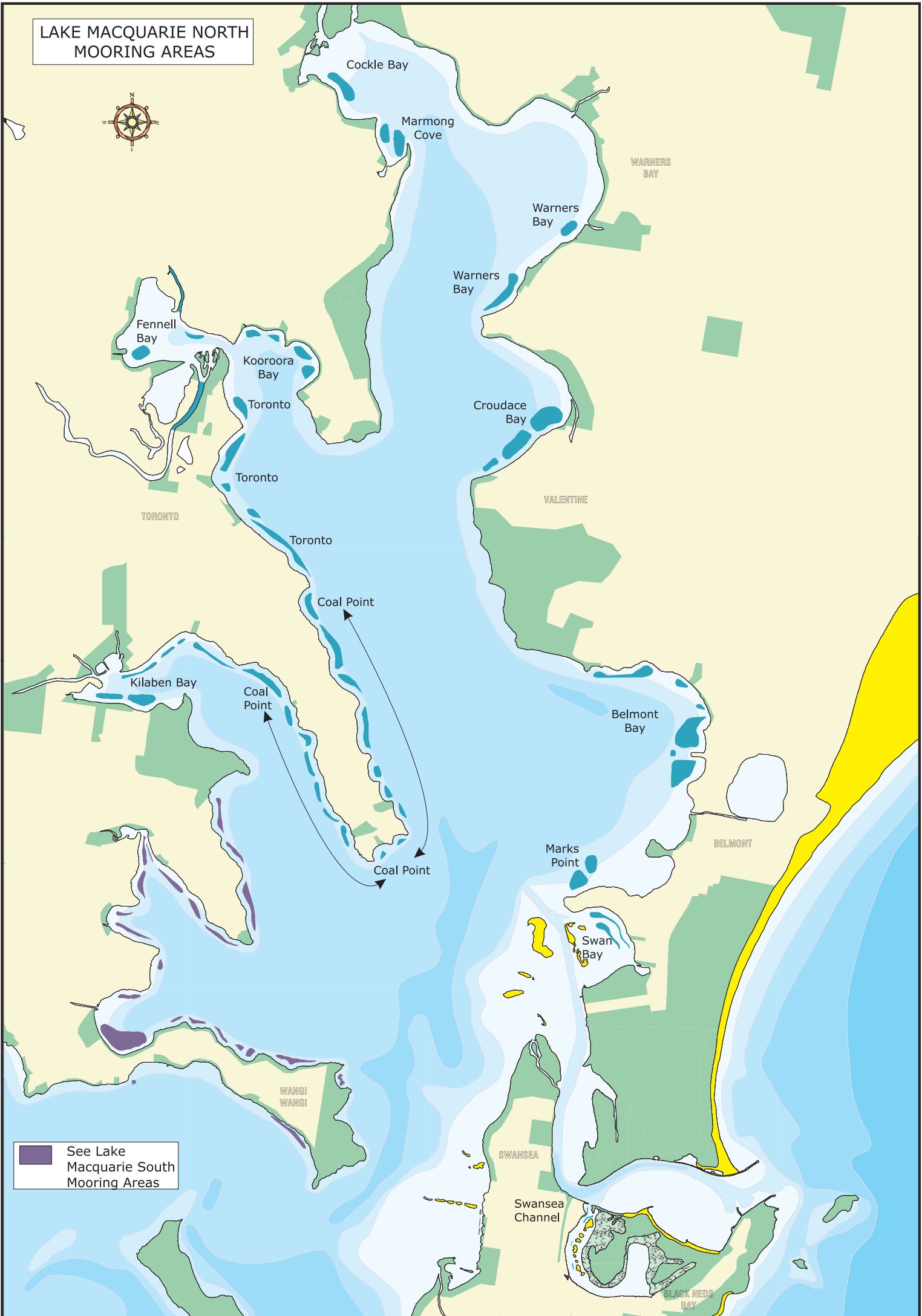
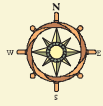
** berths
distributed by
width,
average 4m

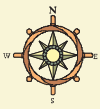
*** too large,
but 5 pens for
large yachts

APPENDIX B

LAKE MACQUARIE MOORING SITES, NSW MARITIME

LAKE MACQUARIE NORTH
MOORING AREAS





LAKE MACQUARIE SOUTH MOORING AREAS

See Lake Macquarie
North Mooring Areas

