

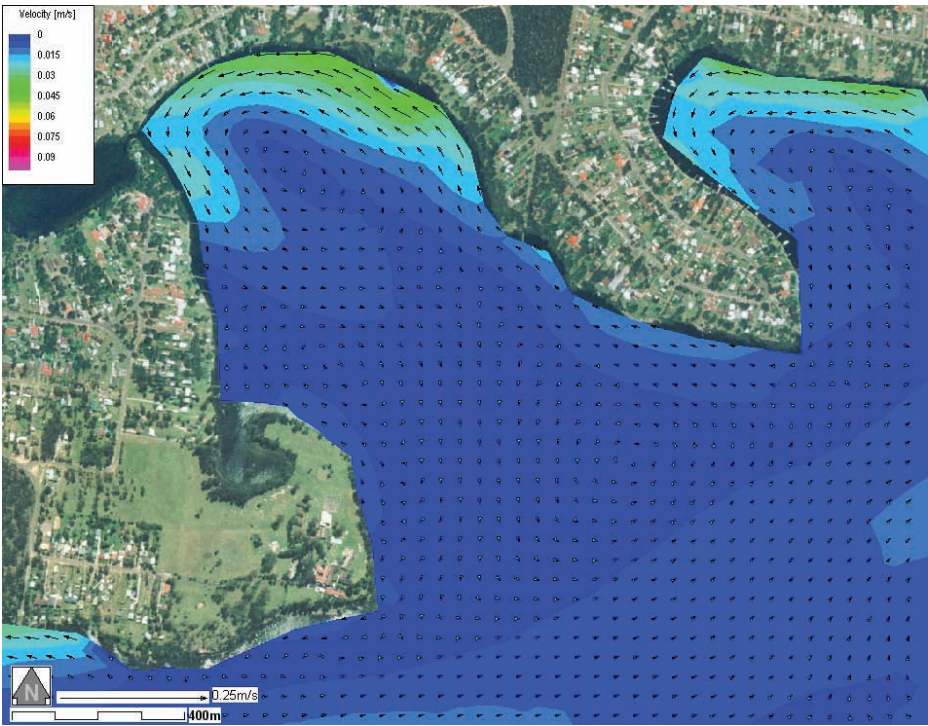
FIGURE 7A

EXISTING

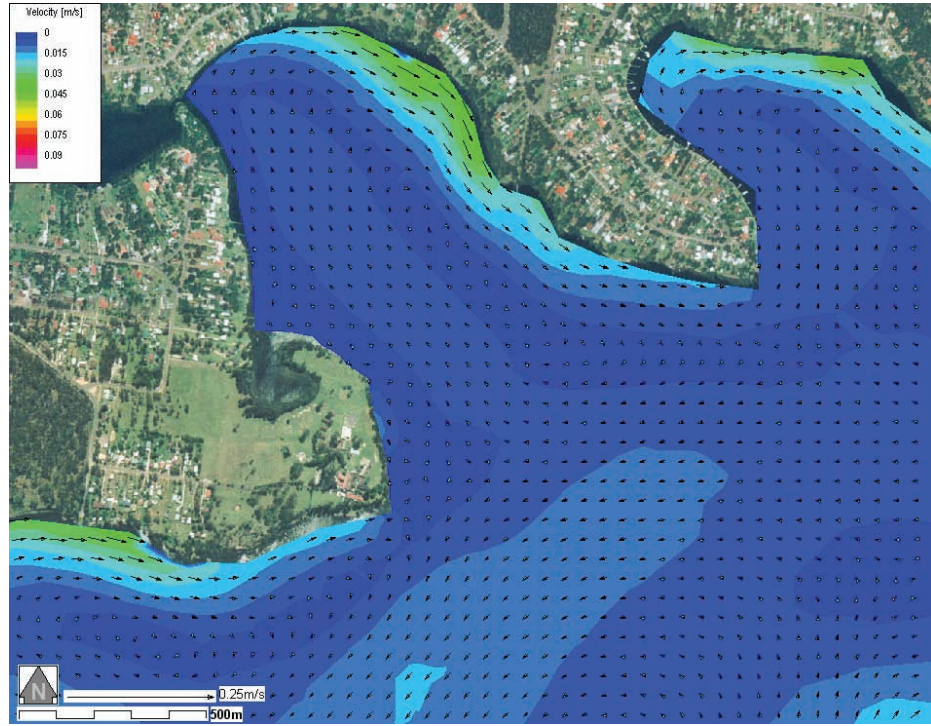
Northerly 50th Percentile Wind - 1.3m/s



Easterly 50th Percentile Wind - 2.8m/s

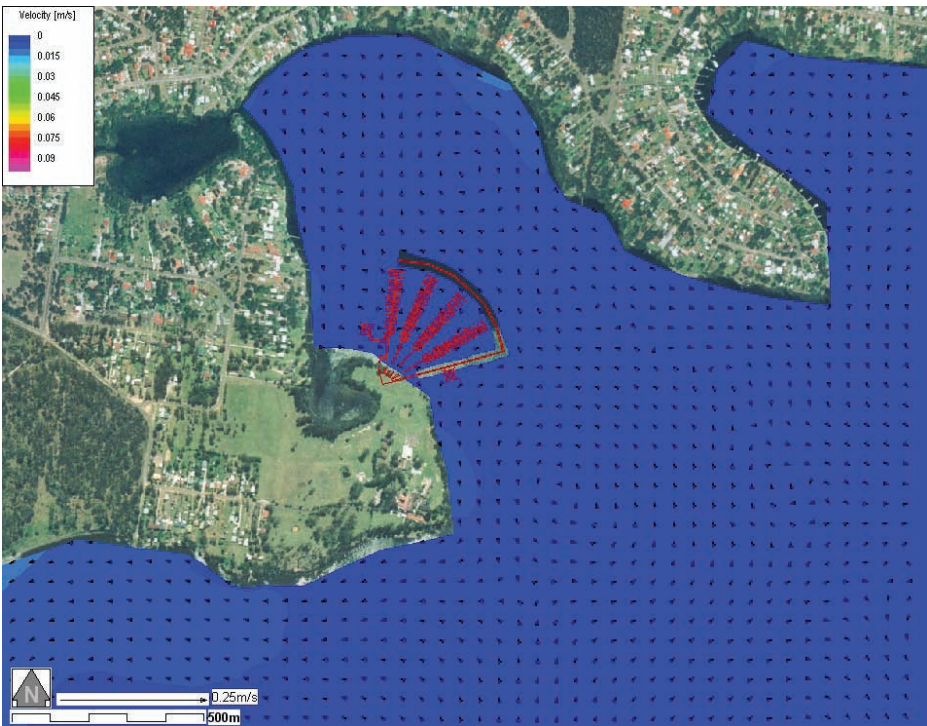


Westerly 50th Percentile Wind - 3.1m/s

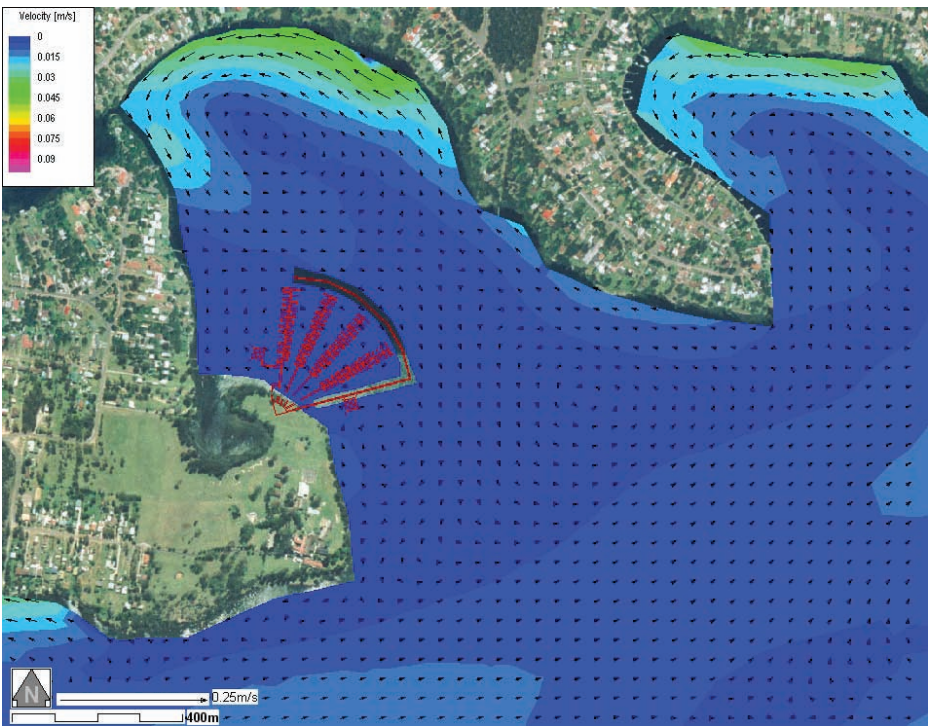


DEVELOPED

Northerly 50th Percentile Wind - 1.3m/s



Easterly 50th Percentile Wind - 2.8m/s



Westerly 50th Percentile Wind - 3.1m/s

