
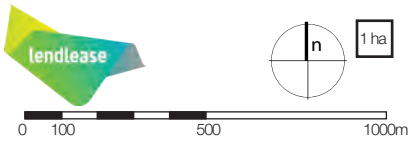
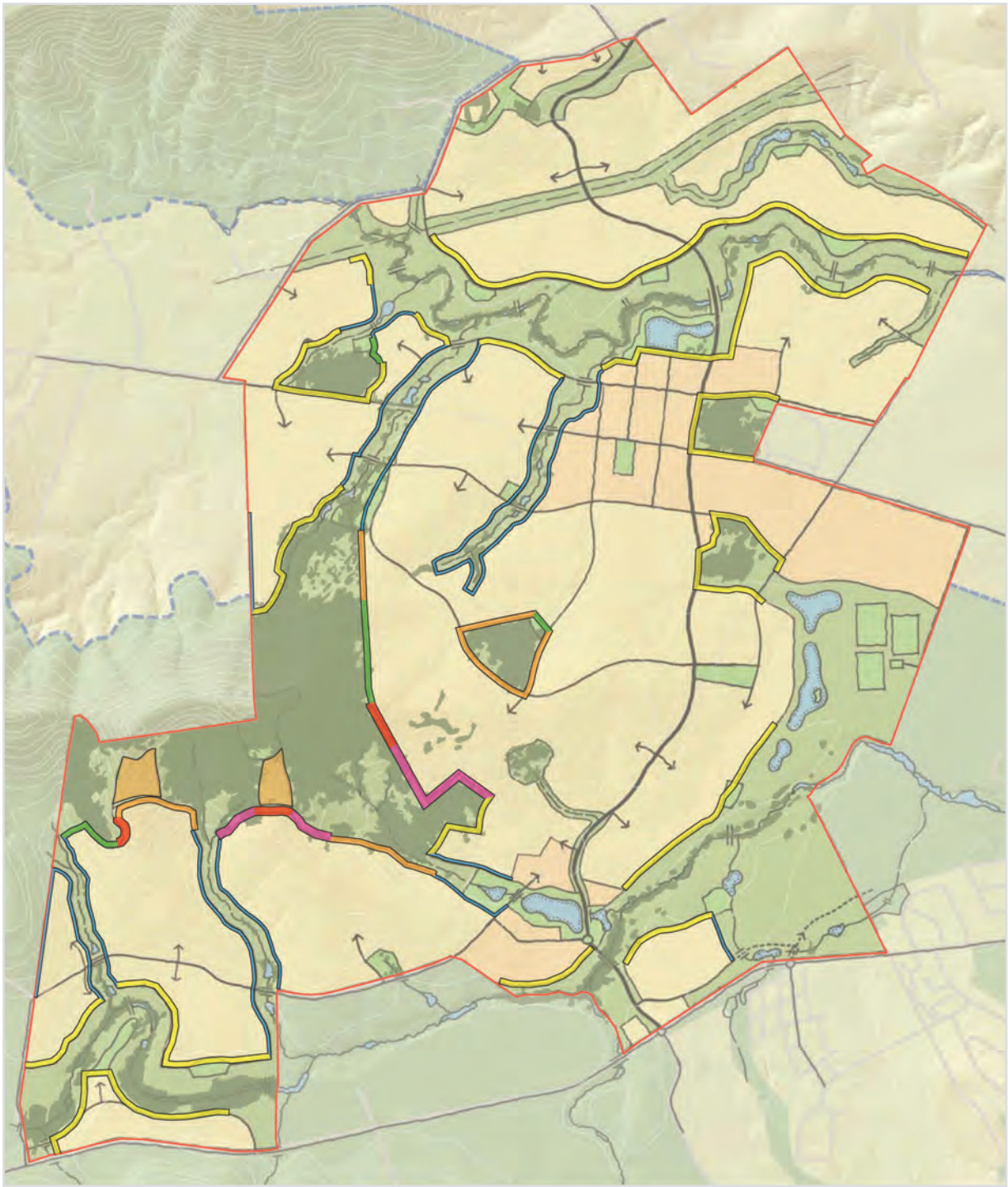


Statement of commitment #37 (MOD 4)

 **Lowland Woollybutt-Melaleuca**
 Refer to Ecological Flora and Fauna Assessment March 2010



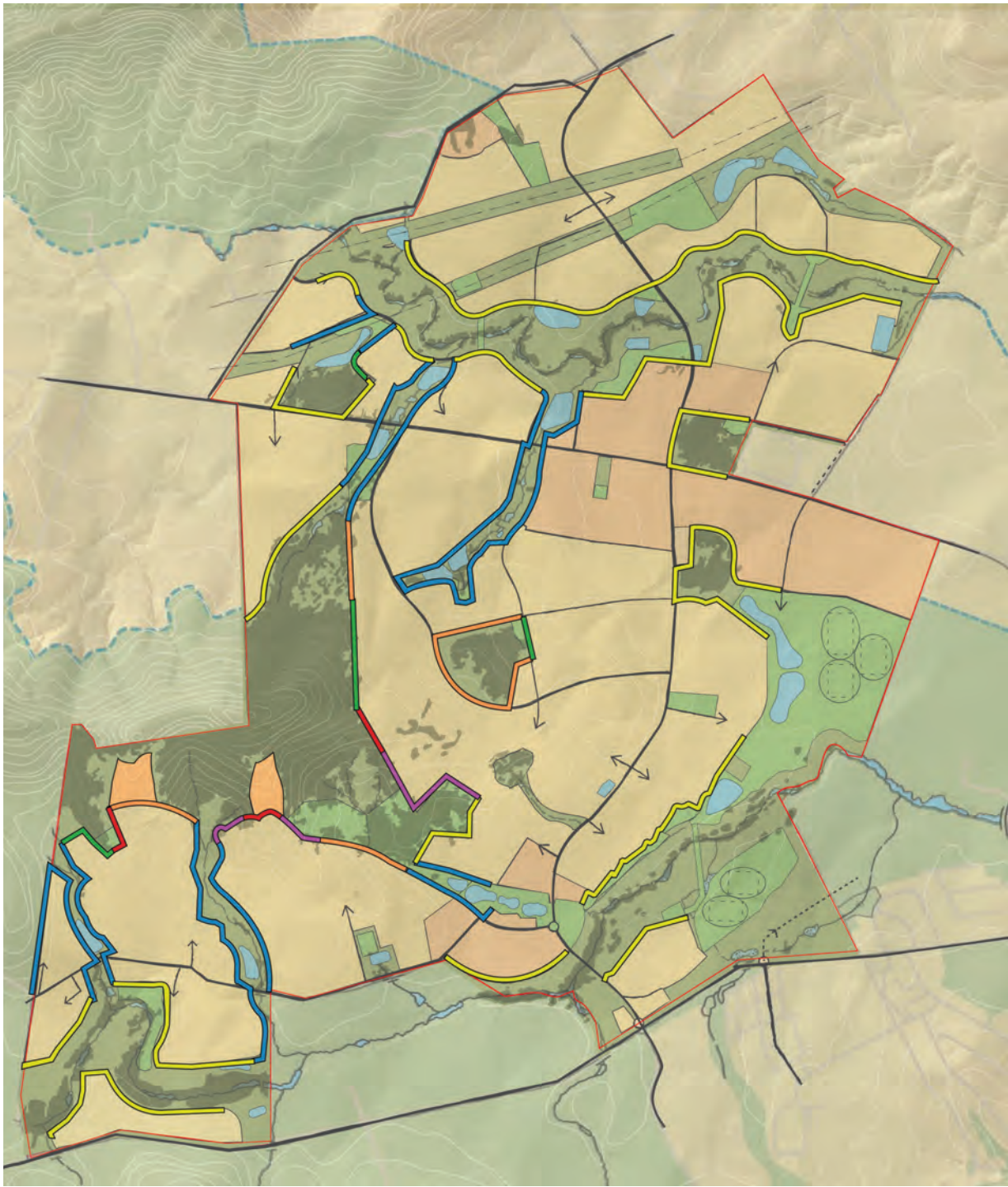
Subject to verification and detailed site survey 1:20,000 @ A4 10m Contours July 2018



Bushfire Asset Protection Zones (APZ)



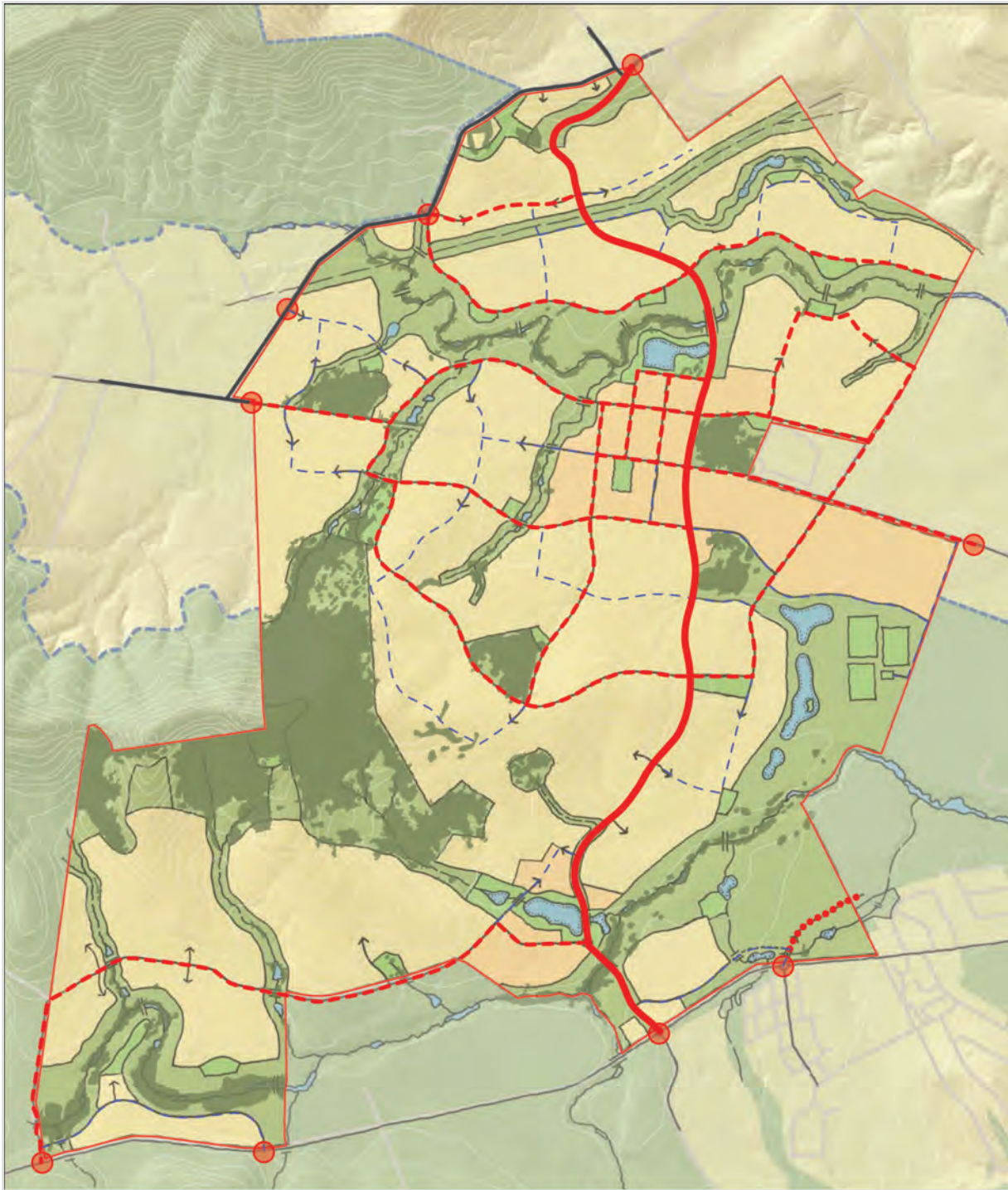
Subject to verification and detailed site survey 1:20,000 @ A4 10m Contours February 2011




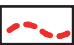
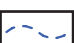


Bushfire Asset Protection Zones (APZ)(MOD 4)



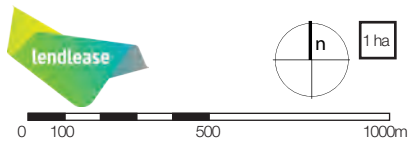
Subject to verification and detailed site survey 1:20,000 @ A4 10m Contours July 2018



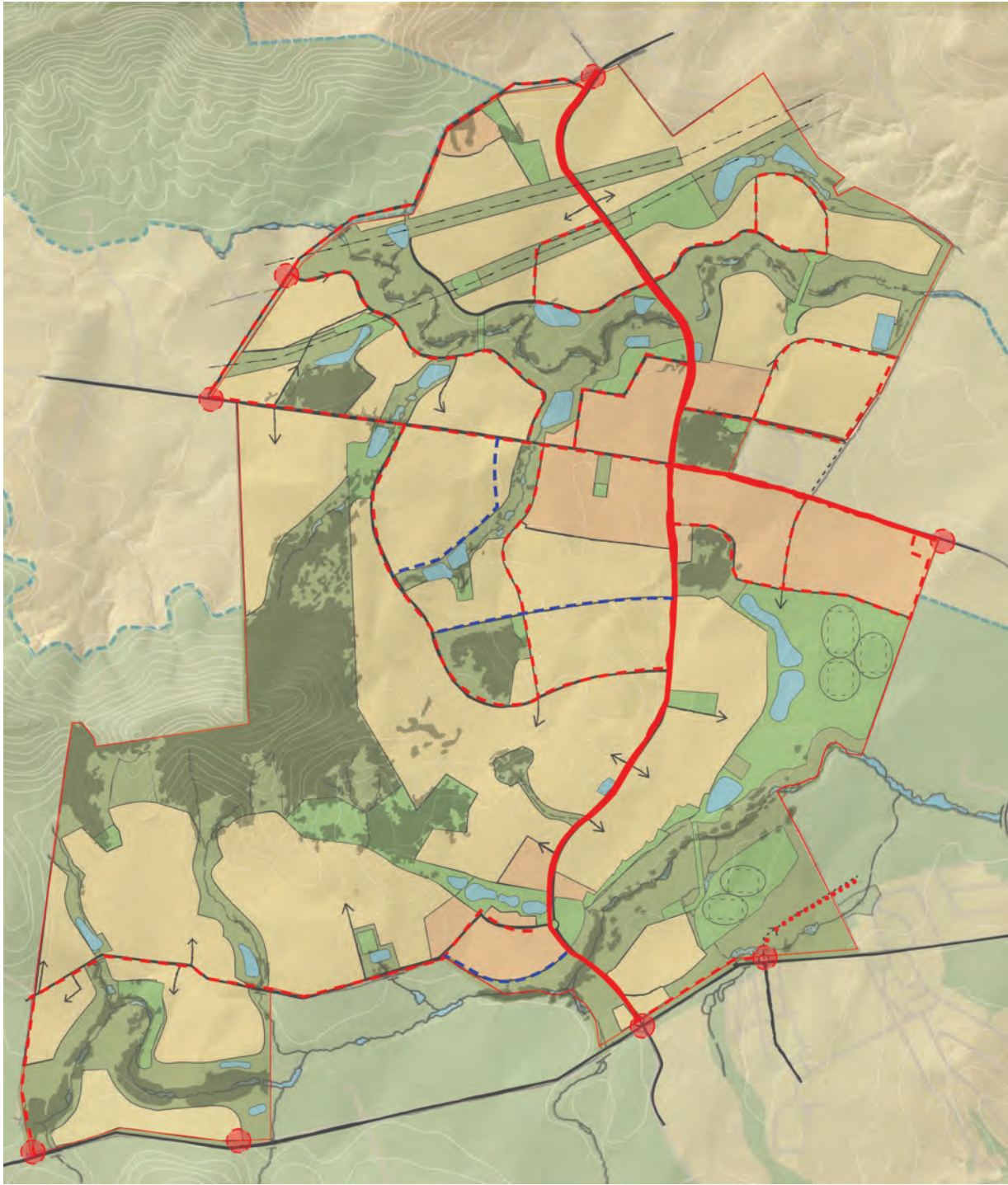
Road Layout and Hierarchy

-  **Sub-Arterial Road**
2-4 lanes, Bus Route
-  **Major Collector Street**
Bus Route
-  **Minor Collector Street**
Principal Pedestrian Link
-  **Access Points**
Principal Links
-  **Indicative Crossing Points**


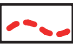



-  **Albion Park Bypass**
Indicative Route



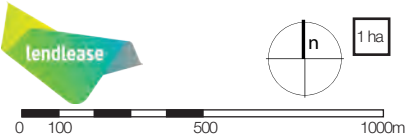
Subject to verification and detailed site survey 1:20,000 @ A4 10m Contours February 2011



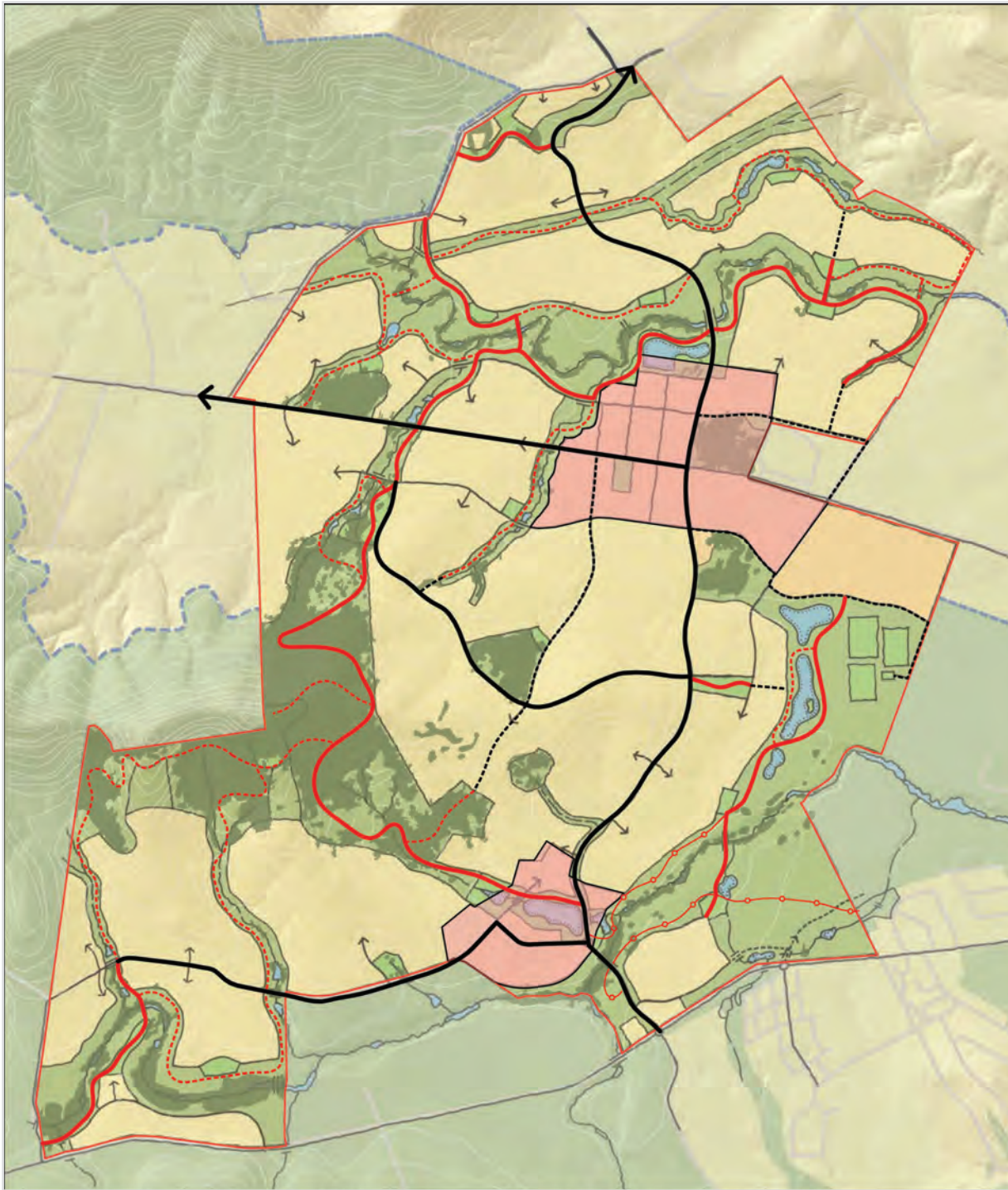
Road Layout and Hierarchy (MOD 4)

-  **Sub-Arterial Road**
2-4 lanes, Bus Route
-  **Major Collector Street**
Bus Route
-  **Minor Collector Street**
Principal Pedestrian Link
-  **Access Points**
Principal Links
-  **Indicative Crossing Points (Vehicles Only)**






-  **Albion Park Bypass**
Indicative Route


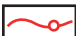


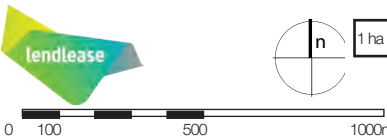
Subject to verification and detailed site survey 1:20,000 @ A4 10m Contours July 2018



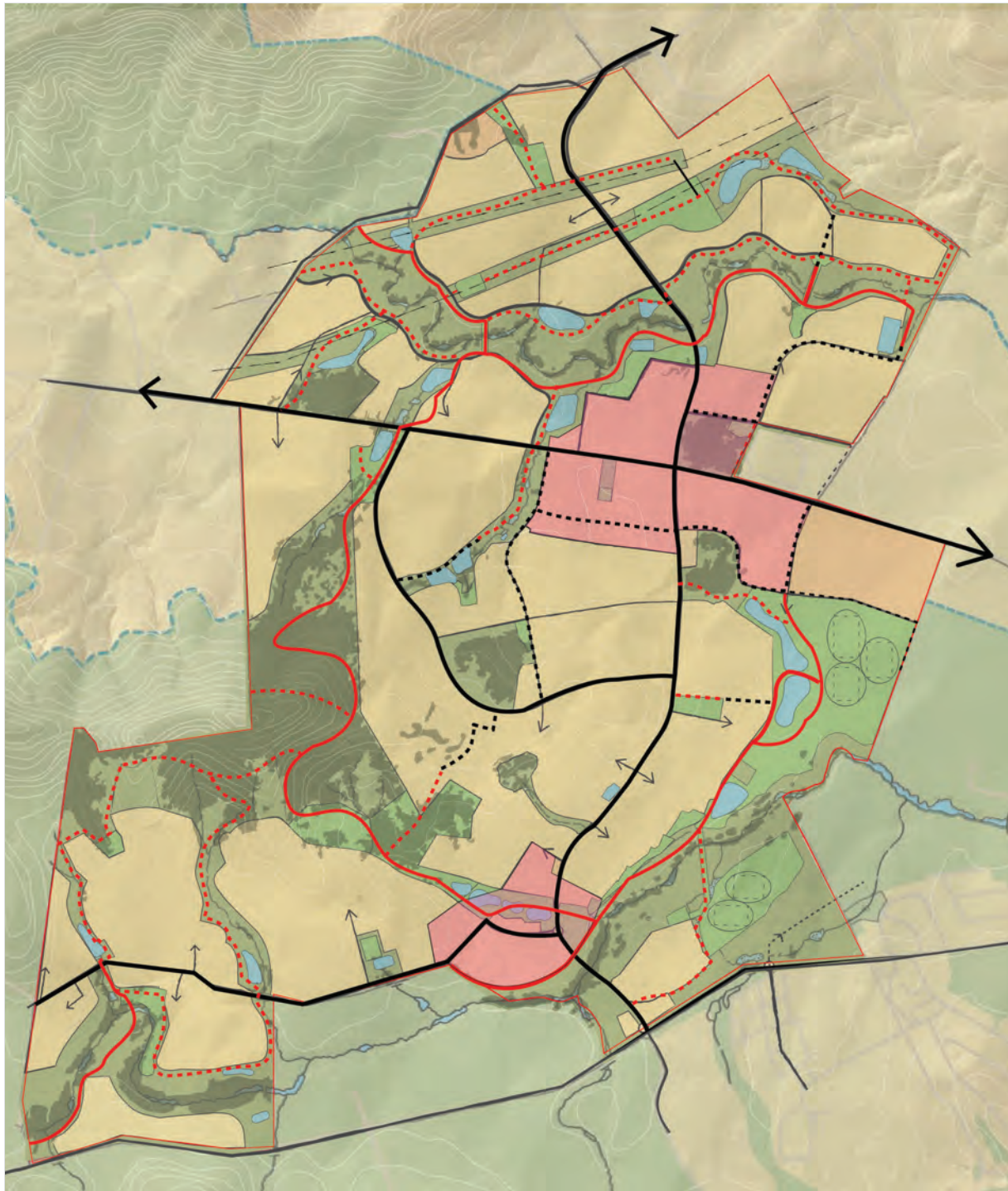
Proposed Pedestrian & Cycle Network

-  **Pedestrian/Bicycle Friendly Zones**
2-4 lanes, Bus Route
-  **Primary/Commuter Path in Road Corridors**
2.5m sealed
-  **Secondary Path in Road Corridors**
2.5m sealed
-  **Primary Trail in Open Space Corridors**
2.5m sealed
-  **Secondary Trail in Open Space Corridors**
1.5m gravel




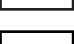

-  **Indicative Crossing Points**
-  **Subject to Stage 1 PA**



Subject to verification and detailed site survey 1:20,000 @ A4 10m Contours February 2011

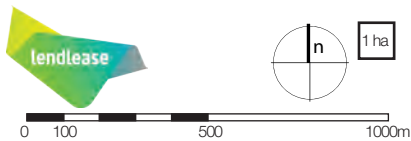


Proposed Pedestrian & Cycle Network (MOD 4)

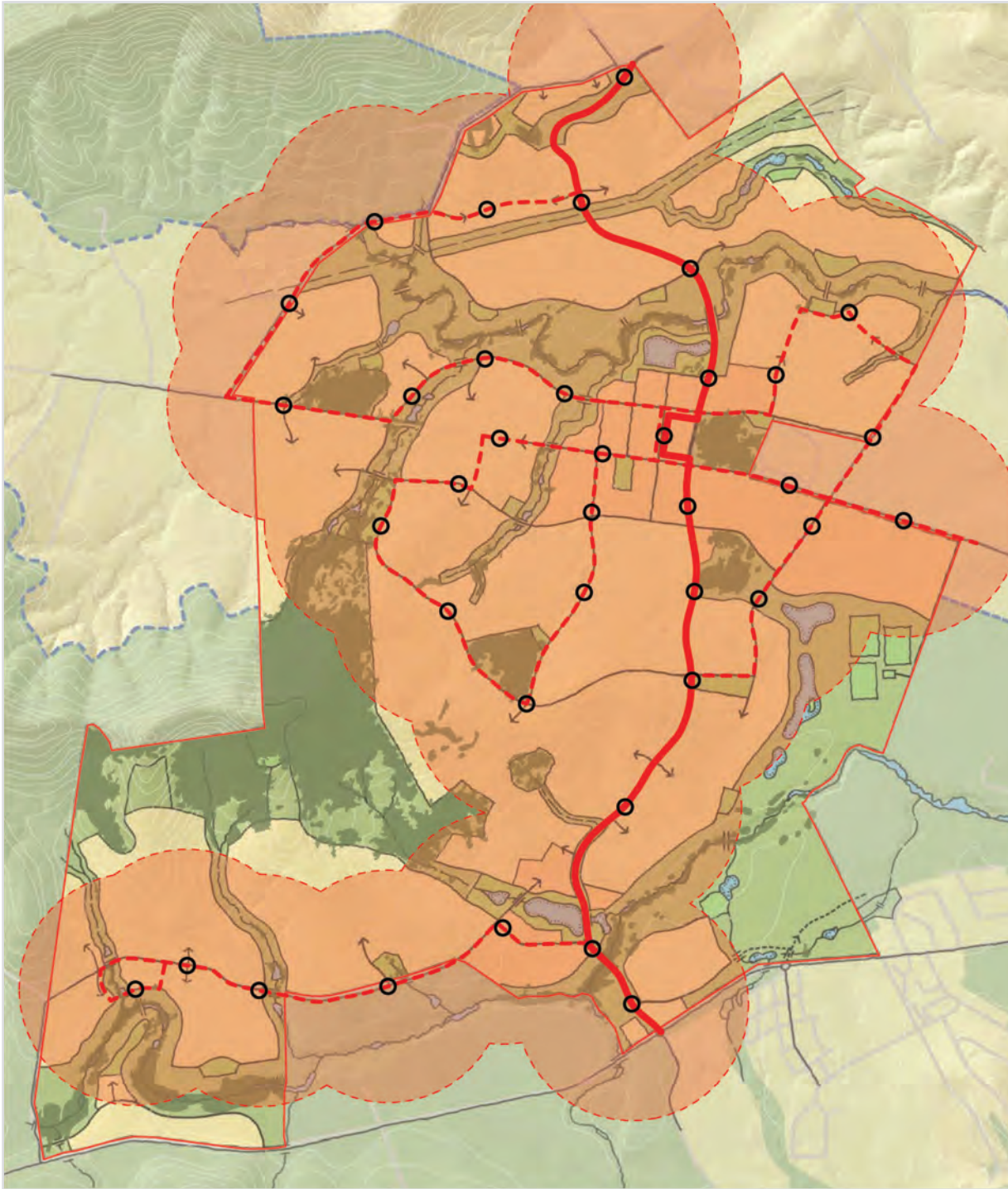
-  **Pedestrian/Bicycle Friendly Zones**
2-4 lanes, Bus Route
-  **Primary/Commuter Path in Road Corridors**
2.5m sealed
-  **Secondary Path in Road Corridors**
1.5m-2.5m sealed
-  **Primary Trail in Open Space Corridors**
2.5m sealed
-  **Secondary Trail in Open Space Corridors**
1.5m gravel




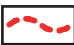
Indicative Crossing Points (Vehicles Only)



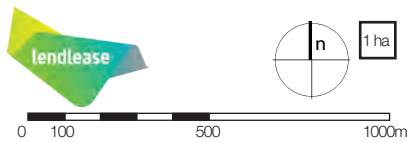
Subject to verification and detailed site survey 1:20,000 @ A4 10m Contours July 2018



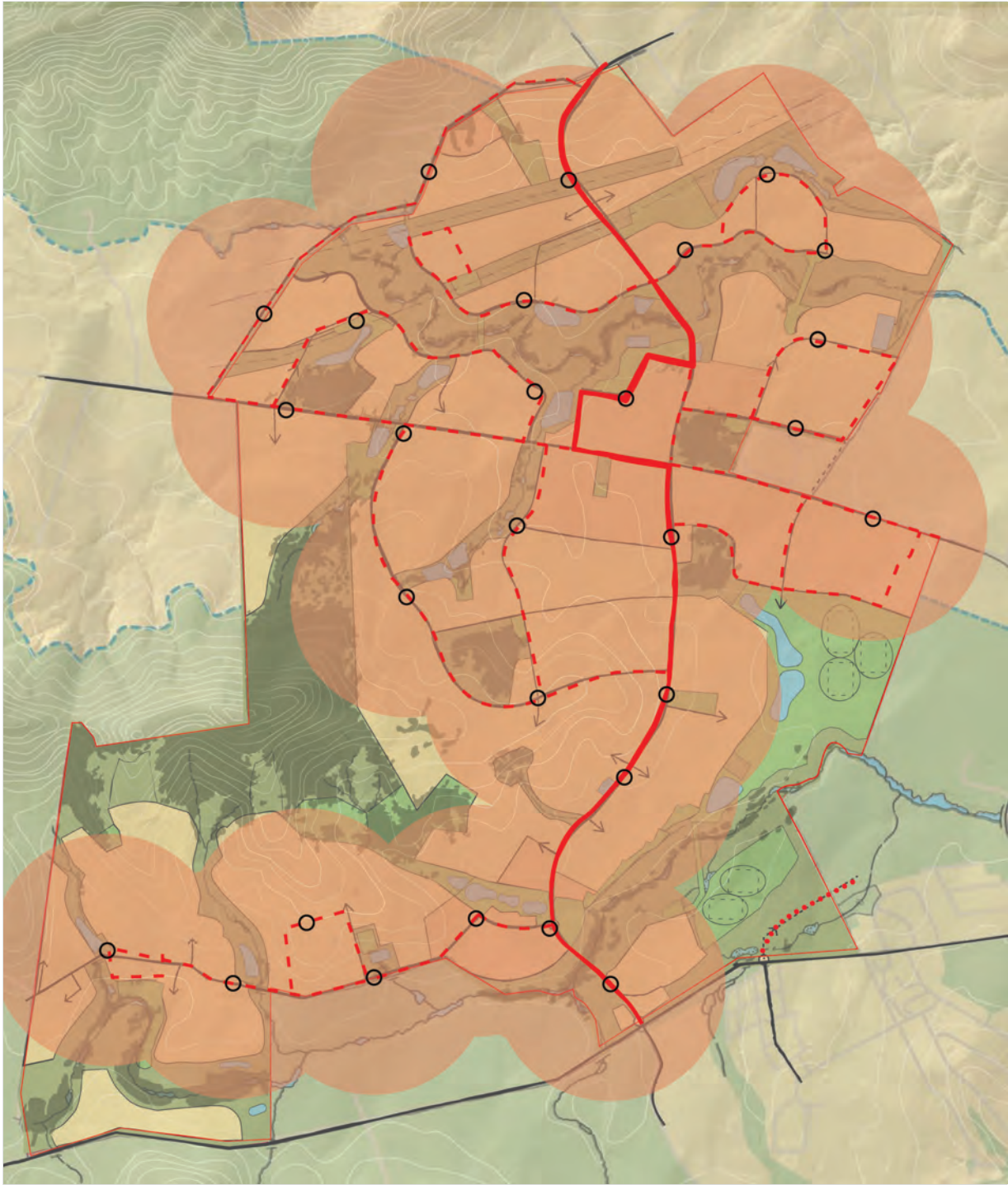
Indicative Bus Service

-  **Strategic Trunk Bus Route**
To be negotiated with future operator
-  **Approximate Bus Route**
To be negotiated with future operator
-  **Approximate Bus Stop Location**
To be negotiated with future operator
-  **400m Radius from Bus Stops**
Typically 5 minutes walking radius

-  **Albion Park Bypass**
Indicative Route



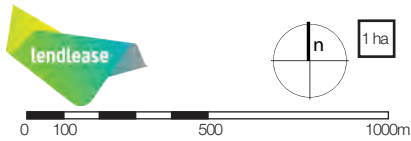
Subject to verification and detailed site survey 1:20,000 @ A4 10m Contours February 2011



Indicative Bus Service (MOD 4)

-  **Strategic Trunk Bus Route**
To be negotiated with future operator
-  **Approximate Bus Route**
To be negotiated with future operator
-  **Approximate Bus Stop Location**
To be negotiated with future operator
-  **400m Radius from Bus Stops**
Typically 5 minutes walking radius

-  **Albion Park Bypass**
Indicative Route



Subject to verification and detailed site survey 1:20,000 @ A4 10m Contours July 2018