

# CALDERWOOD CONCEPT PLANS

CALDERWOOD CONCEPT PLAN MP 09-008Z MOD 4

13 AUGUST 2018

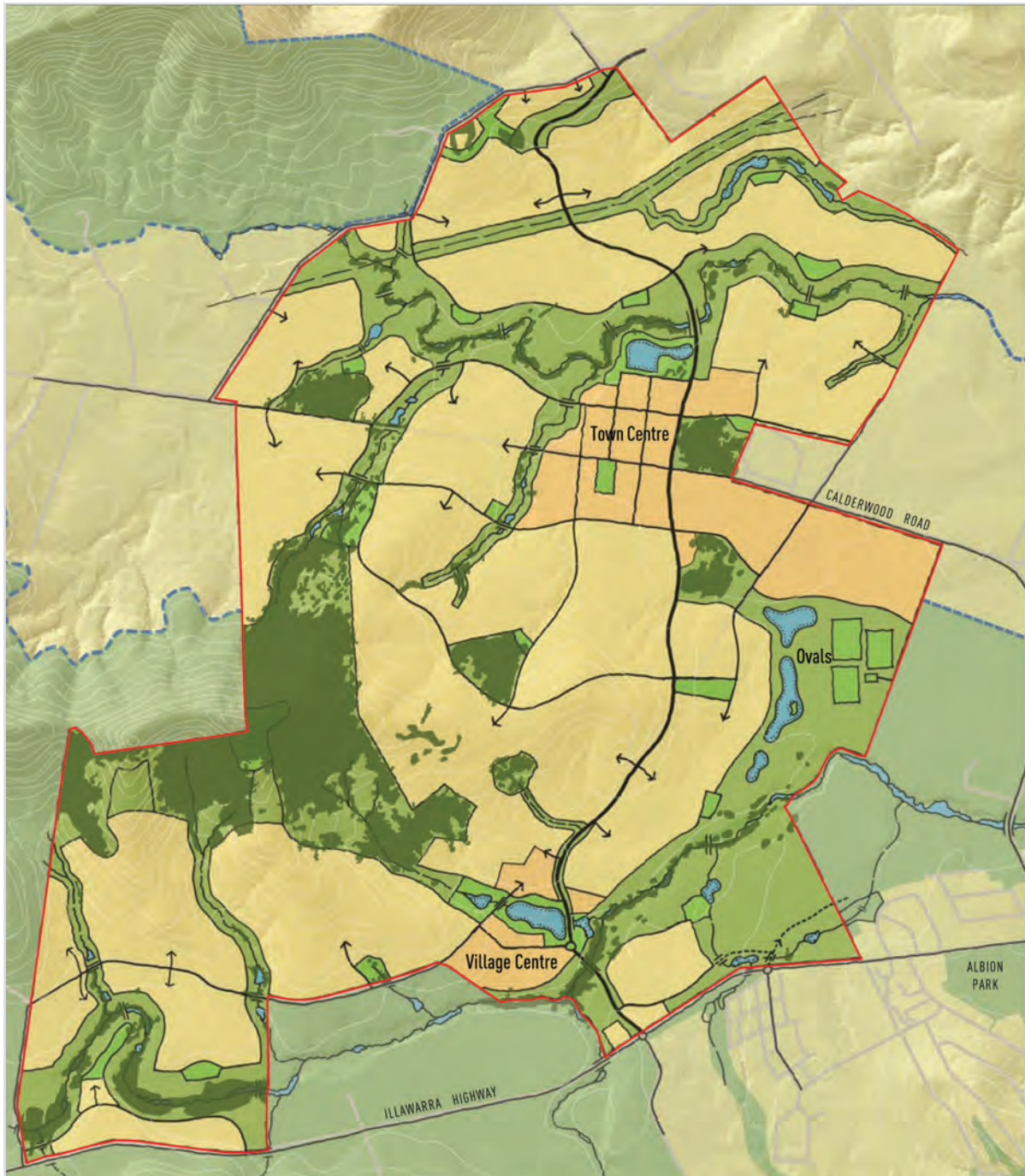


THIS PAGE HAS BEEN LEFT BLANK INTENTIONALLY

## CONTENTS

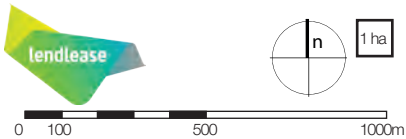
---

CONCEPT PLAN	01
CONCEPT PLAN (MOD 4)	02
RESIDENTIAL CHARACTER AREA	03
RESIDENTIAL CHARACTER AREA (MOD 4)	04
RIPARIAN CORRIDOR NETWORK	05
RIPARIAN CORRIDOR NETWORK (MOD 4)	06
INDICATIVE OPEN SPACE NETWORK	07
INDICATIVE OPEN SPACE NETWORK (MOD 4)	08
ENVIRONMENTALLY SIGNIFICANT LANDS	09
ENVIRONMENTALLY SIGNIFICANT LANDS (MOD 4)	10
STATEMENT OF COMMITMENT #37	11
STATEMENT OF COMMITMENT #37 (MOD 4)	12
BUSHFIRE ASSET PROTECTION ZONES (APZ)	13
BUSHFIRE ASSET PROTECTION ZONES (APZ) (MOD 4)	14
ROAD LAYOUT AND HIERARCHY	15
ROAD LAYOUT AND HIERARCHY (MOD 4)	16
PROPOSED PEDESTRIAN & CYCLE NETWORK	17
PROPOSED PEDESTRIAN & CYCLE NETWORK (MOD 4)	18
INDICATIVE BUS SERVICE	19
INDICATIVE BUS SERVICE (MOD 4)	20
WATER CYCLE MANAGEMENT	21
WATER CYCLE MANAGEMENT (MOD 4)	22
FLOOD MITIGATION PLAN	23
MOD 4 FLOOD MITIGATION PLAN (MOD 4)	24
POSSIBLE SCHOOL SITES	25
POSSIBLE SCHOOL SITES (MOD 4)	26
PART 3A AREA	27
PART 3A AREA (MOD 4)	28
LANDSCAPE CHARACTER AREA	29
LANDSCAPE CHARACTER AREA (MOD 4)	30
ZONING PLAN (MOD 4)	31
MOD 4 OVERLAID ON CURRENT CONCEPT PLAN	32



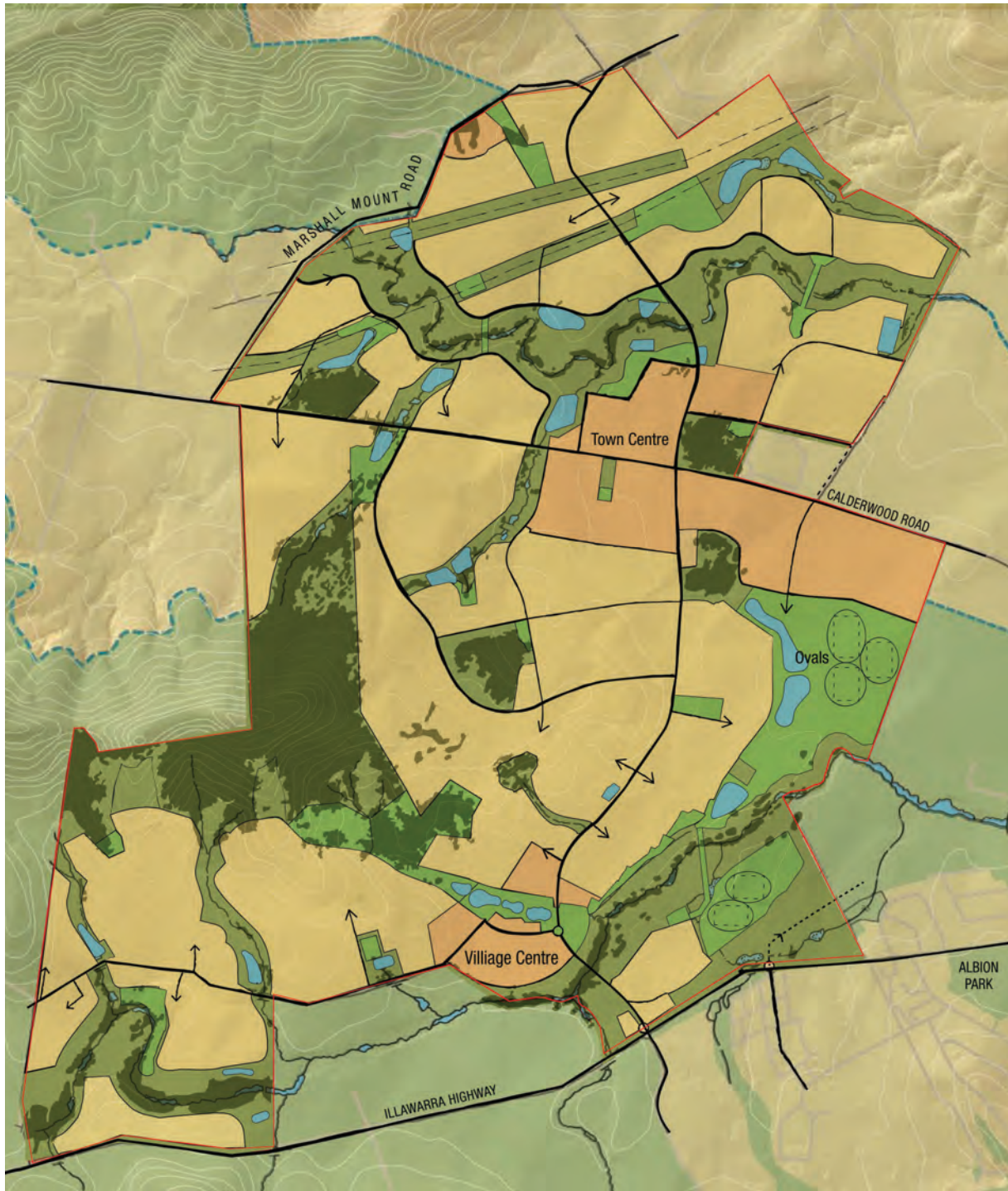
Concept Plan

- Town and Village Centres**  
Mixed Uses including Retail, Employment, Residential, Learning and Community Amenities
- Residential Neighbourhoods**
- Parks**  
eg Citywide, district and local parks
- Principal Open Space and Drainage**  
eg Environmental Conservation, Environmental Management and Drainage Corridors
- Indicative Water Bodies**



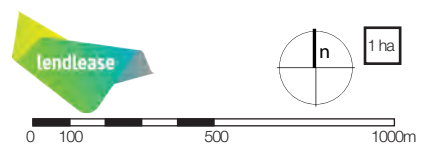
Subject to verification and detailed site survey 1:20,000 @ A4 10m Contours February 2011



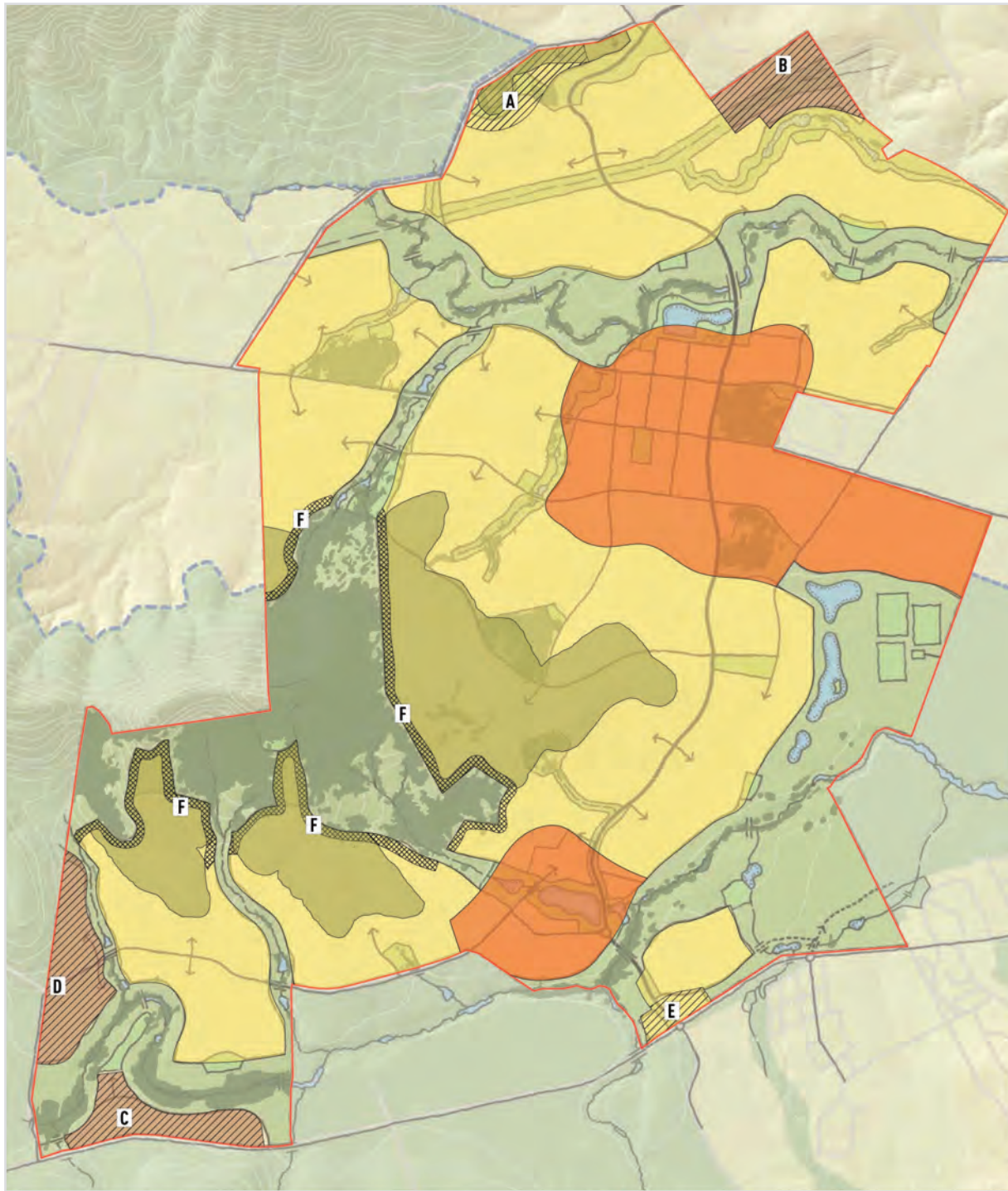


Concept Plan (MOD 4)

- Town and Village Centres**  
Mixed Uses including Retail, Employment, Residential, Learning and Community Amenities
- Residential Neighbourhoods**
- Parks**  
eg Citywide, district and local parks
- Principal Open Space and Drainage**  
eg Environmental Conservation, Environmental Management and Drainage Corridors
- Indicative Water Bodies**



Subject to verification and detailed site survey 1:20,000 @ A4 10m Contours July 2018

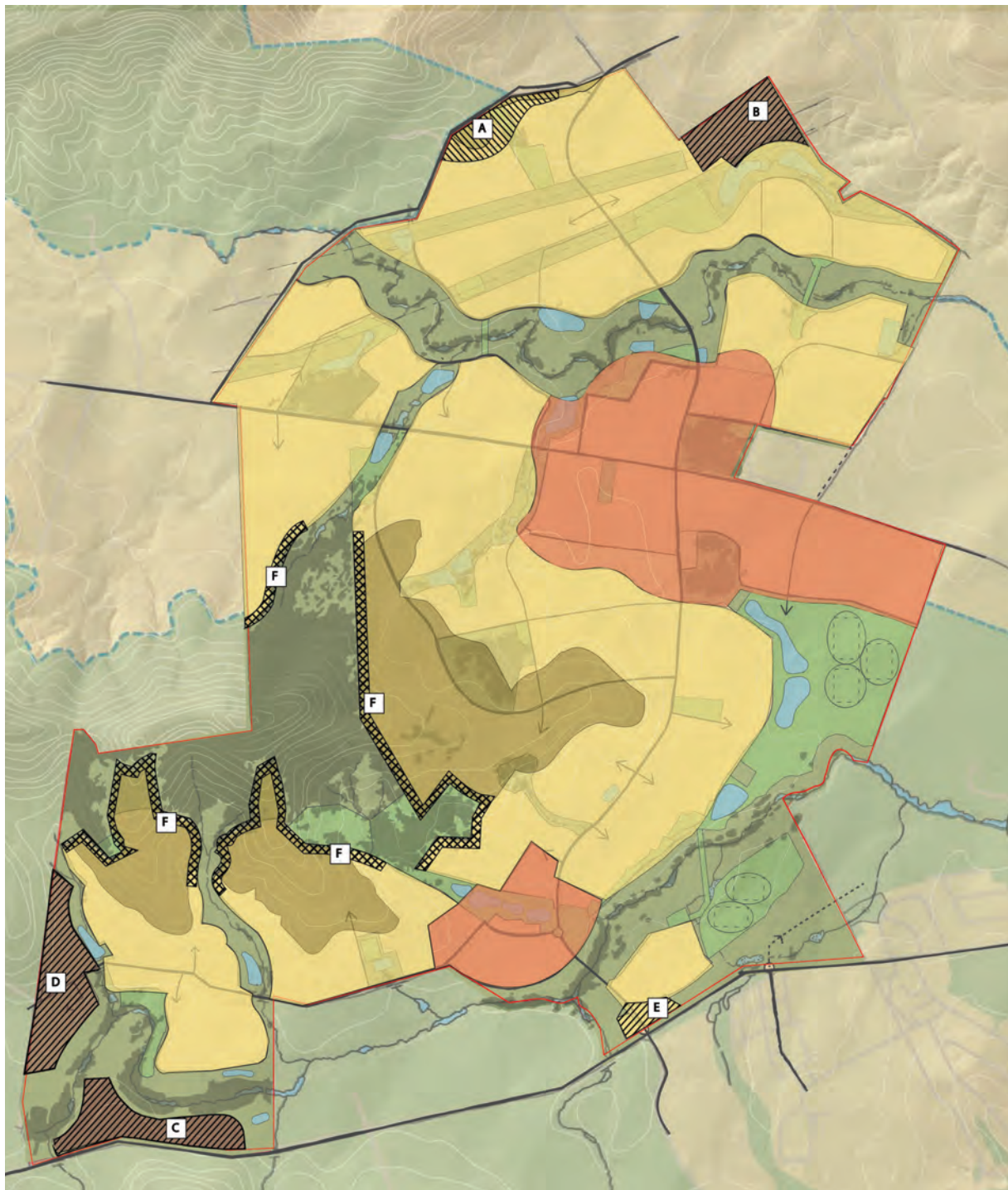


Residential Character Area



Subject to verification and detailed site survey 1:20,000 @ A4 10m Contours February 2011

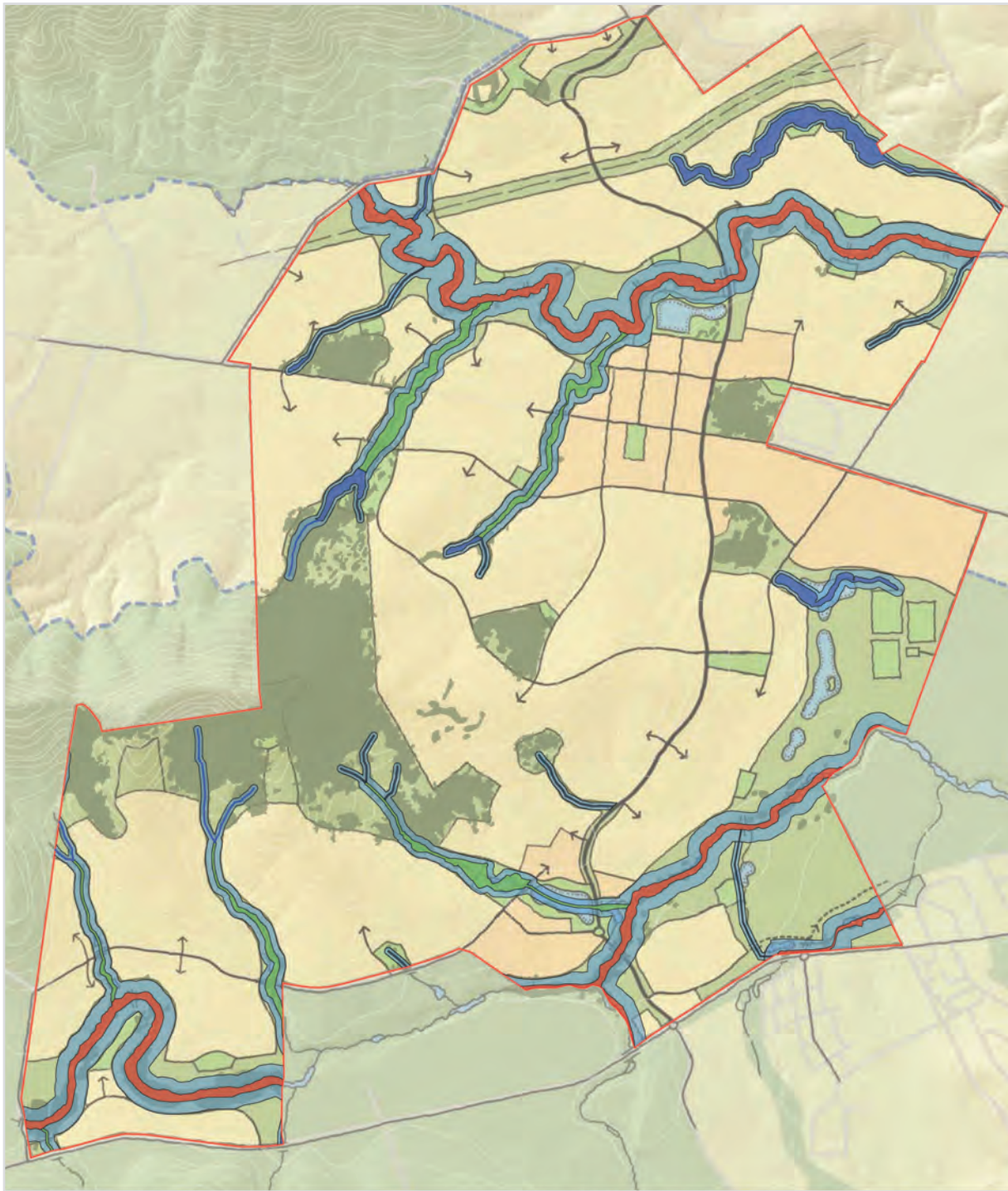








Residential Character Area (MOD 4)

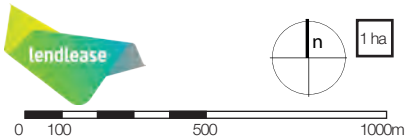


Subject to verification and detailed site survey 1:20,000 @ A4 10m Contours July 2018



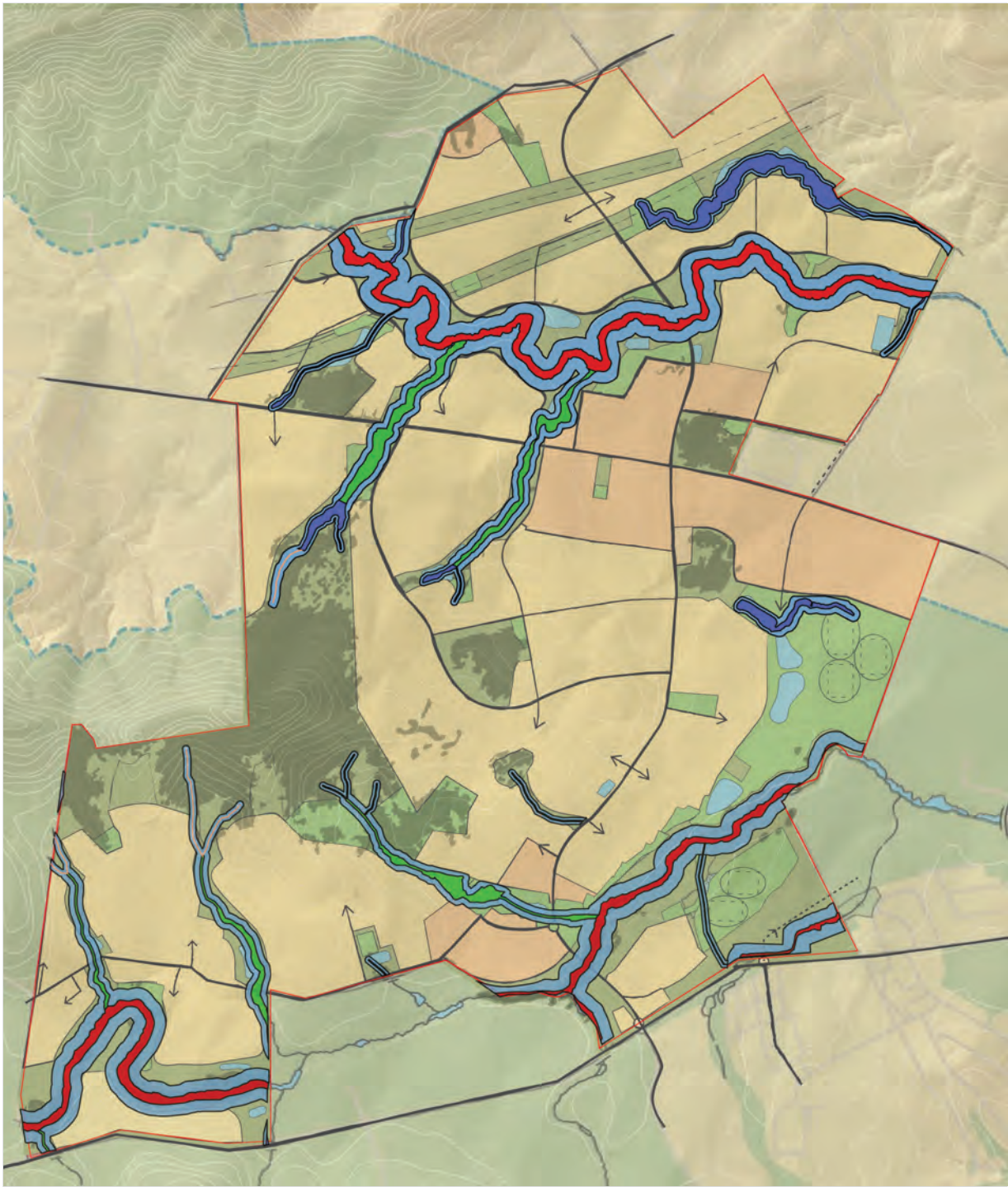
Riparian Corridor Network

-  **Top of Bank - Stream Order 3+**  
Ground truth and ALS survey data
-  **Top of Bank -Stream Order 2**  
Ground truth and ALS survey data
-  **Top of Bank -Stream Order 1**  
Ground truth and ALS survey data
-  **Core Riparian Zone (CRZ)**  
Size based on stream order







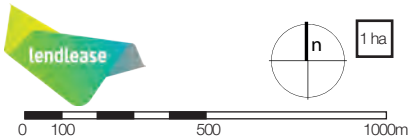
Subject to verification and detailed site survey 1:20,000 @ A4 10m Contours February 2011





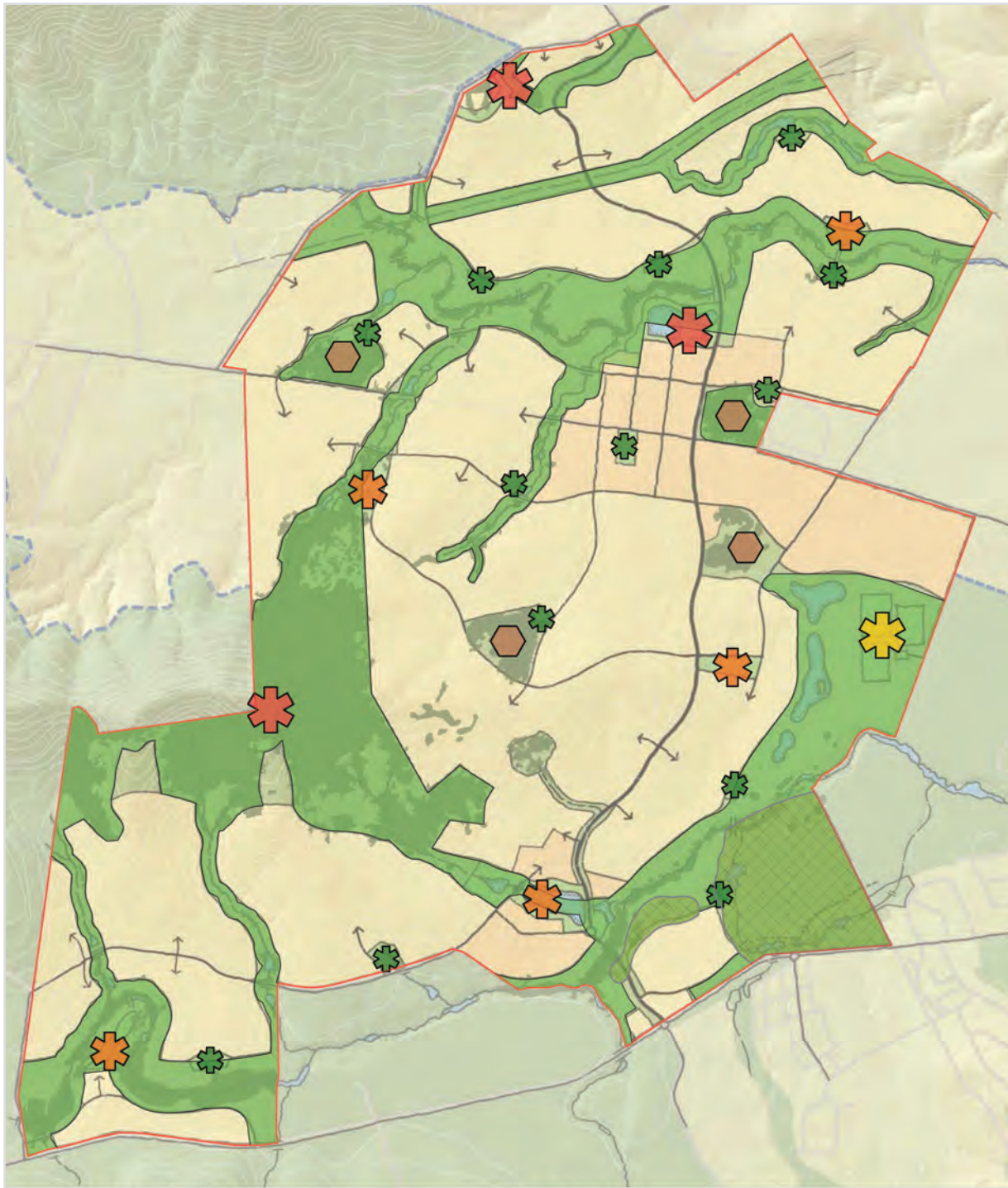
Proposed Riparian Corridor Network (MOD 4)

-  **Top of Bank - Stream Order 3+**  
Ground truth and ALS survey data
-  **Top of Bank -Stream Order 2**  
Ground truth and ALS survey data
-  **Top of Bank -Stream Order 1**  
Ground truth and ALS survey data
-  **Core Riparian Zone (CRZ)**  
Size based on stream order



Subject to verification and detailed site survey 1:20,000 @ A4 10m Contours July 2018





Indicative Open Space Network



Subject to verification and detailed site survey 1:20,000 @ A4 10m Contours February 2011