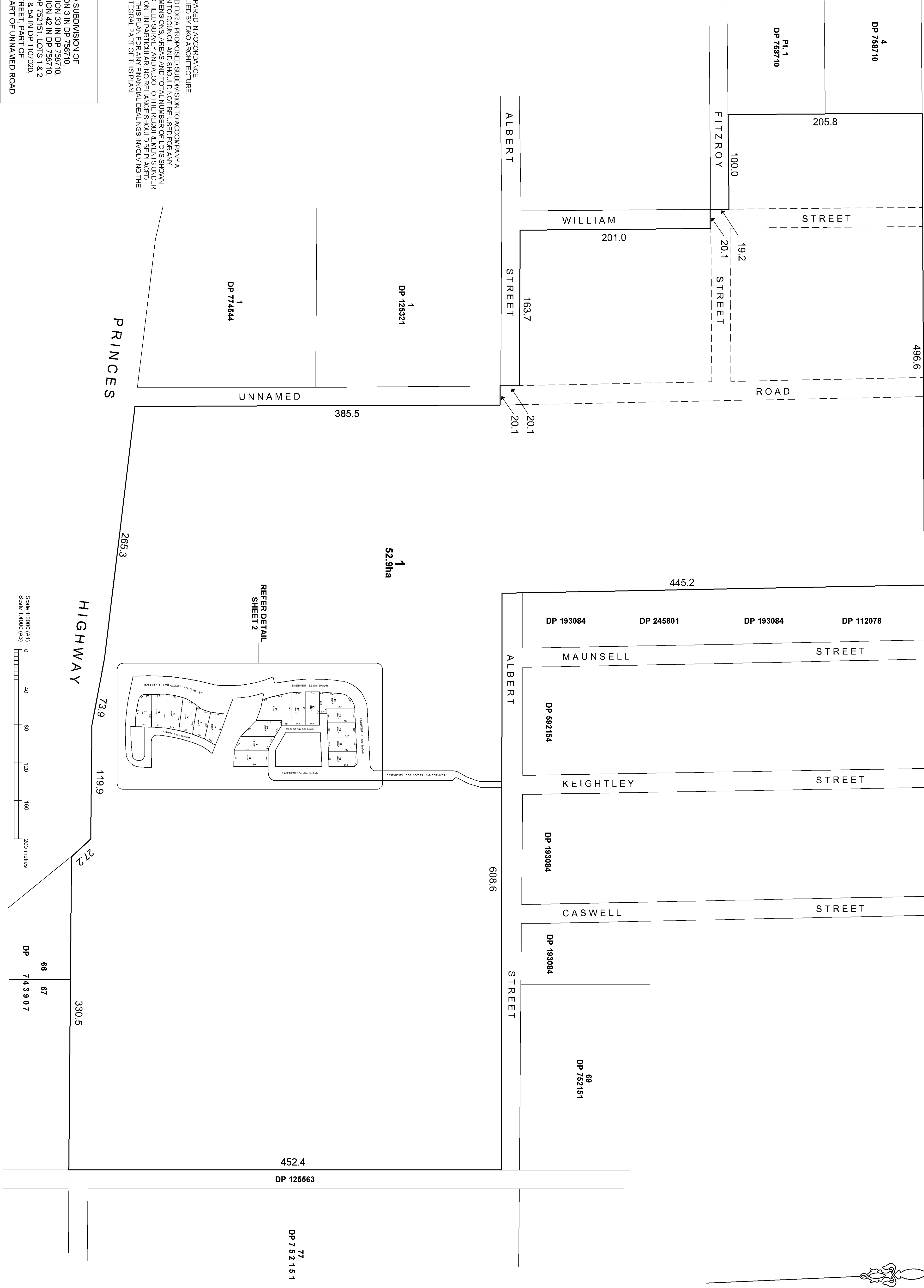
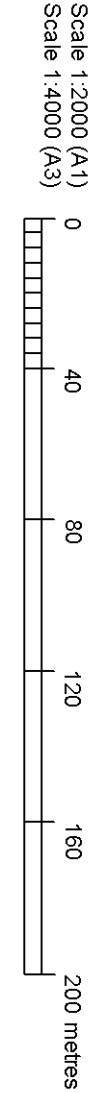


SOUTH HEAD ROAD



NOTES:
THIS PLAN HAS BEEN PREPARED IN ACCORDANCE WITH INFORMATION SUPPLIED BY DKO ARCHITECTURE.
THIS PLAN WAS PREPARED FOR A PROPOSED SUBDIVISION TO ACCOMPANY A SUBDIVISION APPLICATION TO COUNCIL, AND SHOULD NOT BE USED FOR ANY OTHER PURPOSE. THE DIMENSIONS, AREAS AND TOTAL NUMBER OF LOTS SHOWN HEREON ARE SUBJECT TO FIELD SURVEY AND ALSO TO THE REQUIREMENTS UNDER ANY RELEVANT LEGISLATION. IN PARTICULAR, NO RELIANCE SHOULD BE PLACED ON THE INFORMATION ON THIS PLAN FOR ANY FINANCIAL DEALINGS INVOLVING THE LAND. THIS NOTE IS AN INTEGRAL PART OF THIS PLAN.

NOTE
PLAN OF PROPOSED SUBDIVISION OF LOTS 2 & 3 IN SECTION 3 IN DP 758710, LOTS 1 TO 4 IN SECTION 33 IN DP 758710, LOTS 1 TO 4 IN SECTION 42 IN DP 758710, LOTS 50, 65 & 66 IN DP 752161, LOTS 1 & 2 IN DP 553273, LOT 51 & 54 IN DP 1107020, PART OF WILLIAM STREET, PART OF FITZROY STREET & PART OF UNNAMED ROAD



mepstead
& ASSOCIATES
REGISTERED SURVEYORS AND
DEVELOPMENT CONSULTANTS

Sydney
10/4 Central Avenue, Thornleigh N.S.W. 2120
Phone 02 9975 4500 **Fax** 02 9975 4533
Central Coast
45 Bayside Street, Gosford N.S.W. 2250
Phone 02 4324 4714 **Fax** 02 4324 4639

Postal
PO BOX 208, Pennant Hills N.S.W. 1715
DX 4702 Pennant Hills
Internet
mepstead@mepstead.com.au
www.mepstead.com.au

Designed -	Scale 1:2000	Principal
Drawn: B.E.	Datum:-	
Checked: C.C.	Date: 24.11.08	
L.G.A. EUROBOODALLA	A1	

SILVER SPIRIT PARTNERS
MORUYA EAST VILLAGE, MORUYA
PLAN OF PROPOSED SUBDIVISION
(SEE NOTE)

Dwg No.
4711-SUB1
Sheet No. 1
of 2 sheets
Our Ref.
4711