

# CA PTI, SECURITY i11 ALARMS

P.O. Box 628 ARTARMON  
NSW 1570 Phone: 13 88 1 1  
Fax: 1 300 307 328  
Master Licence No. 407561416

SYDNEY - MELBOURNE -  
BRISBANE



Security Alarm  
Systems  
1111 1111 1111  
1111

Computer  
Environment and  
Machinery  
Monitoring  
Systems

Alinn K...inn

8,1 11 11  
1 incl,

Intri, r, A

Vlin, Al,ni[,r,n"  
tiri,Vri,

Hold I h P:uu,  
:1 [,iml o,rom,

1-ta,,,11,\*  
ti,,g nn

A,: 17+glrWl,i  
Pttliict

1\_,i,ihlI\*hrJ ar  
I,itia

Vli 11lr In,lu,u,  
A,ari11 inmr,

Advanced  
products from:

Ademco  
Inter Range  
Esprit  
Alarmet  
Javelin  
Sanyo  
Ness

Proud Members  
of



Friday, October 15, 2004

Mr Sid Londish  
Tiffany Developments Pty Ltd  
Unit 11C  
70 Alfred Street  
MILSONS POINT NSW

Dear Sid

**Re : Oxford Falls Senior Retirement Development**

Further to our discussions please find enclosed our proposal for the Security mastepplan for the Oxford Falls Senior Retirement Development.

Please do not hesitate to contact me should you wish to discuss anything further.

Yours sincerely,

**Rob Pennefather**  
**Managing Director**  
**Cage Security Alarms Pty. Ltd**



**CAGE SECURITY PTY LTD**

Master Licence No : 407561416

**PROPOSED SECURITY MASTERPLAN**

**FOR  
TIFFANY DEVELOPMENTS PTY LTD**

**MAJOR PROJECT 05-0113**

**SENIORS LIVING DEVELOPMENT OXFORD FALLS**

**PROPOSED CONCEPT PLAN**

**April 2008**



# CONTENTS

---

1. Proposed Security Masterplan

2. Overview

3. System specifications

4. System diagram

5. In Summary

6. Product Information

# 1 PROPOSED SECURITY MASTERPLAN

---

## **Security a necessity**

The requirement for security is always on the increase. It is imperative however that any security system or procedure is discreet and effective, to ensure that disruption is deterred whilst the lifestyle and community spirit that this development encourages remains unaffected.

By developing our risk assessment of the Oxford Falls Seniors Retirement Development in line with the CPTED guidelines, Cage Security has designed a proposal to minimise criminal opportunities through integration of high level security systems and procedures without compromising the atmosphere created by the resort environment.

The combination of an extensive knowledge of, & commitment to, the security industry is why Cage Security is perfect for the Oxford Falls Seniors Retirement Development.

Although the concept is to achieve a 'gated' community we don't want the residents to feel that they are locked inside. Our solution will provide a feeling of safety combined with freedom. The security systems & management of this development will be above and beyond any similar existing development of this nature in the area.

## Introduction

Cage Security is a proudly Australian owned company and was established in Sydney in 1983 to cater for the growing demand for professional security advice and services.

The company has consulting, sales and installation teams who provide security solutions and services to a wide variety of residential homes and high profile commercial clients, including shopping centres, sports facilities, sports clubs, and private businesses. Additionally, our own Security Operations & Monitoring Centre provides 24 hour monitoring services to all our clients.

We insist on using only the highest quality, technologically advanced alarm, access control and surveillance equipment. Our systems comply with Australian Standards as well as insurance company and security industry standards.

As well as embracing futuristic technology we offer the commitment of the Company's highly trained, qualified personnel. Cage Security's consultants, technicians, operation personnel, guards and programmers are fully licensed as per NSW Government and Police requirements and possess extensive industry experience and professional customer service skills. They are on call 24 hours a day and can customise systems to best suit the specific security requirements of each client.

## 2. OVERVIEW / DETAILS

---

Cage Security proposes that each resident will have the following equipment installed for their own personal security :-

### *Individual Apartments – Internal Security features:*

- Alarm panel incorporating all security and medical alarm functions:
  - Easy operation of use: If the tenant requires security response they simply press the security button.
  - For medical attention they can press the medical button or the remote medical help button.
  - When leaving their premises they press the “arm” button to turn on the intruder alarm.
  - When arriving back to their unit they simply badge their card to instantaneously disarm the alarm and release the front door lock.
  - Each unit will have an internal buzzer/sounder, which will identify the alarm to an intruder.
- Hardwired Medical Help button in each unit and already wired for future requirements such as medical calls for assistance to showers and baths.
- Remote Individualised Medical Help button which will work anywhere in the complex, and advise the Onsite medical personnel of who and where the alarm is activated.
- Intercommunication systems (Intercom) accessing caretakers, security personnel and visitors from outside the complex through to the

apartment buildings. Tenants will be able to release the driveway gate, pedestrian entry gate and the main door into the Apartment block.

- Internal movement sensors will be installed to detect intrusion to the unit as part of the alarm system.
- Smoke & Fire alarms indicator panels and transmission systems will advise the fire department as well as onsite security personnel.
- Additional wiring will be installed into each unit for future requirements such as cameras, panic or medical facilities. Images from these cameras can be viewed from an external location via the internet should a higher level of monitored care be required.

*Apartment blocks – Internal Security features:*

- There will be an Intercom call station for each unit located at the entry to the car park as well as the main entry door situated at the foyer entry. Visitors will be able to contact the tenants via the intercom and the resident will be able to release the main doors, lift access and garage doors as required.
- Cameras recording movement around the entry to internal foyer, common areas, fire exits, car park entries and exits. Images from these cameras will be recorded 24hours.
- Internal car park areas will have an intercom call station adjacent to each lift to allow visitors to call tenants for lift access to their floor.
- Card readers will also be located in lift cars for tenants use.



*Apartment blocks – External Security features:*

- Cameras will monitor events from people coming and going through all entrances & exits including car park areas.
- Access control card readers will be located outside common entrance and car park entries.
- Smoke & Fire alarm indicator panels and transmission systems will advise the fire department as well as onsite security personnel.

*Community facilities - Electronic and physical security measures incorporating shops, restaurants, leisure centres, administration, security & medical buildings:*

- Access control, Security alarms, high level of surveillance & cameras, overt security personnel in public areas
- Effective lighting
- Perimeter gates and fencing protection
- Smoke & Fire alarms indicator panels and transmission systems will advise the fire department as well as onsite security personnel.

*Perimeter protection*

- The main entry will feature electric vehicle & pedestrian gates. Access to this area will be determined by proximity credential cards for tenants and staff.
- Intercommunication system for visitors & contractors to gain entry.

- The main entry and perimeter areas will be monitored by surveillance cameras and specialised perimeter protection such as photoelectric beams and fence alarm protection
- The main entry gates and adjoining fencing will be of significant grand structure
- Perimeter fencing in less obvious areas will consist of 1.5M chain wire fence with energised and alarmed cabling above and through the fence. Should any intruder attempt to cut through or climb over the fence the alarms will indicate the section of fence where the violation occurred. Camera surveillance will also cover these areas and the alarms will be transmitted to the onsite and offsite security personnel. This fence is designed to be high security yet unobtrusive.
- Signage will be displayed at regular intervals warning of the security in place.
- Movement sensor lighting will illuminate upon any alarm occurrence with the section or sections of the fence, and camera surveillance will record events as they occur.
- Images of these alarm activations will be transmitted directly to and recorded at the caretakers facility, sent to a pda's held by onsite security personnel as well as our 24hour Security Operations & Monitoring Centre.
- All alarms from the perimeter fencing will be transmitted to the paging system and the onsite security personnel can converse via mobile phone or two way radio to action security back up when required. The security manager will have transport around the complex by a silent battery operated golf cart.

### *Response Personnel*

- There will be a 'live' on onsite security manager/caretaker who will be on call to respond to all emergencies.
- They will be security presence during the day and will be relieved after normal business hours by a roving onsite patrol.
- All response people onsite will carry pagers, two way radio and/or mobile phones and some may carry pda's for remote viewing of video alarm signals.

### 3. SYSTEM SPECIFICATIONS

---

In line with this unique development, a customised system will be available to each resident in line with their specific security requirements. The external security is of a high level and can also be customised as required, for example additional entrance gate access controls or more cameras. All systems will be in communication with our 24hour Security Operations and Monitoring Centre.

The technologies that we are proposing for the development are as follows:

- Alarm systems for each dwelling, facilities buildings and the perimeter fencing and grounds. These will be controlled by the 24hour Onsite caretaker / security personnel :
  - The individual units will be armed & disarmed by the tenants; to be activated via panel or remote control for ease of use. The level of each system will be determined by the owners of the residence.
  - Panic / Duress alarms will also be featured in each unit and the main administration buildings.
- Access Control : unobtrusive badges will be distributed to all residents for access to their own residence, car park and all community facilities. These can be deactivated if the badge has not be used over an agreed period due to loss etc.

- A database will store all activity within the access control and can be monitored for easy location of tenants if an alarm is activated.
  - This system incorporates a control facility for contractors entering and the leaving site. Contractors can be issued with access for a set date, length of time on premise and limited access areas.
  - Entrance gates will also use the access control method for security of residents. Visitors will have to be announced and approved before entry.
- Internal Cameras can be installed within residences upon request. This is a discreet system to provide added reassurance to the resident and/or family. Further, if an alarm is activated, images can immediately stream to our Monitoring Centre for action.
  - Medical Alarms : 'peace of mind' for residents should they be in need of medical attention. When activated, messages are sent to both the on site guards and our Monitoring Centre for action.
  - Perimeter Security in the form of :
    - CCTV : Closed circuit security surveillance and reporting systems utilising cameras will be located throughout the village to monitor all areas including common areas buildings, perimeter fencing, grounds, car parks, foyers and entry & exit areas. Images can be directly transmitted to the On site

caretaker, and repeated images will be transmitted to our 24hour Security Operations & Monitoring Centre in Artarmon. These images can be viewed 'live' and reviewed when required. All images will be recorded and held for a minimum of 1 month. Any recorded image can be copied and stored for an indefinite period of time.

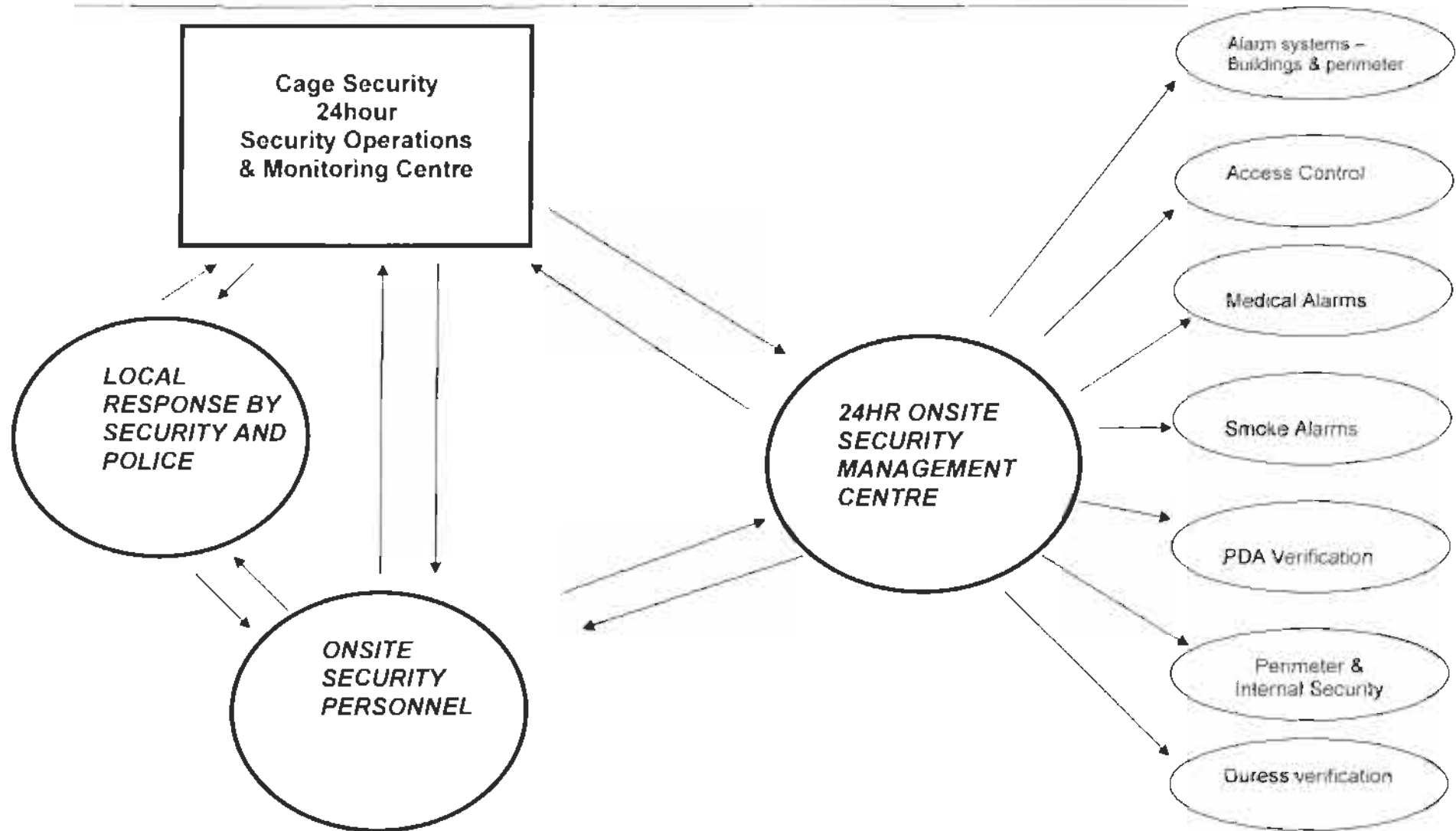
- Gate entrance and exits
  - Random patrols upon request
- 24hour Onsite Caretaker who will be in communication with our 24hour Security Operations & Monitoring Centre for back up assistance 24hours a day including any additional guards or patrols required at specific times.
- Paging System : will be set up between the 24hour Onsite care taker and medical emergency contacts for immediate action when required. This will be an area wide paging service that transmits all alarms to Onsite security personnel, caretakers, medical personnel and management.
- PDA imaging : images sent from the Cage 24hour Security Operations and Monitoring Centre via compressed video image directly to the onsite caretaker's pda to give details regarding alarm activation and its cause.

Due to continuous technological advances within the security industry we have devised a system that is compliant with both present & future potential needs of the residents.

The following systems will be incorporated into the development for future use as and when required by the tenants:

- Cabling and patch work for smart home technology – this enables integration of alarm system, air conditioning, lighting etc to be controlled at central locations and minimises the need for numerous panels.
- Installation of cabling for camera systems within the individual residence. Cameras may be an option that tenants require now or in the future, however the wiring will already be in place.
- Emergency buttons for hot spots i.e. shower and bath. These will communicate directly to the Onsite caretaker and our Monitoring Centre for immediate action.
- Flexibility to connect the alarm system to lighting devices, which upon alarm activation all lighting illuminate providing a further deterrent to unwanted intrusion.

#### 4. Cage Security proposed masterplan for Security System





## 5. IN SUMMARY

---

The security and safety for the residents of Oxford Falls Seniors Retirement Development will be above and beyond anything currently on offer by any similar resort.

There will be a strict security management protocol with the latest technology in integrated security systems, communications and procedures.

The residents will feel free to continue living the life that they expect however comforted by the knowledge that they have 24hour comprehensive security protection, without the feeling of being enclosed or exposed.

# **PRODUCT INFORMATION**



## **CARDAX**

### **HIGH LEVEL ACCESS CONTROL AND ALARM MANAGEMENT SYSTEMS.**

Cardax offer a range of security solutions from cost-effective access control and alarm management to hi-tech enterprise-wide security systems. They have products and service offerings for medium sized businesses through to large global enterprises.

Their security systems incorporate a range of components including the Cardax FT Command Center central management software, the Cardax FT Controller & Devices that co-ordinate, control and report on field devices, and a variety of door readers and other ancillary products.

**Cardax offers the following benefits:**

- Ability to control access to unlimited venues from a central location using a wide-area-network configuration;
- Ability to cancel and instate access to any door for any cardholder on the Cardax network instantaneously from a central location;
- Fully integrated Intruder Alarm system;
- Fully integrates with Cage Security 24hr Operations & Monitoring Centre software;
- Fully integrates with a Digital Video Recording (DVR) system;
- Ability to verify Intruder Alarm conditions on-line and instantaneously over small bandwidth lines.

## ALARMS



### ONE BUSINESS SECURITY FOR ALL BUSINESS NEEDS

Every business is big enough to suffer loss from burglary and theft. That kind of loss can be severe enough to close a business down.

When you go home at night, and it would be better your valuable business goods are safe - your stock, your premises, your staff, and your information.

A Cardex IT security system gives big business benefits to all business owners. It will let you know immediately if there's an intruder on your premises, and contact a monitoring centre to dispatch security guards to secure your business any time of the day or night.

There may also be other incidents that can be alerted by the system, and allowed to go alarm, for example when the temperature reaches a certain level for a particular area, talk to us about the types of events you want to know about.

With its integrated access control system, Cardex IT can also monitor authorised staff movements through your premises, so you know immediately if any security is breached.

Cardex IT gives you peace of mind day and night.



### ALARM MONITORING



## ACCESS CONTROL



### ACCESS CONTROL SYSTEMS (HAT) PROTECT YOU AND YOUR EMPLOYEES

Cardex IT is more than an alarm system. It's a fully featured access control system that protects you and your employees from burglary, vandalism, loss of information, and theft of equipment.

With a Cardex IT security system you have full control over when, and when, staff, visitors or vehicles can move in all areas.

Staff working alone after hours? Cardex IT special concern, for with Cardex IT you can rest assured that any staff working at your premises after hours are safe and secure. No need to worry about anyone wandering in or off the premises.

Control access to your premises, keeping company and staff belongings safe. Prevent handovers of equipment being stolen from offices, and equipment being in circulation.

Forget the pain of master keys being lost or stolen. Cardex IT uses programmed cards that can be recalled in a heartbeat - ensuring the ongoing security of your premises. You'll never need to change the locks again.

Cardex can be equipped instantly to allow or restrict authorised access to any secure area. Adding new staff is just as simple.

Cardex IT can also produce reports and audit trails of all movements. It's that simple.

Cardex IT - Securing Your Business.



Cardex Plus Plus - for added security requiring card and a PIN number.

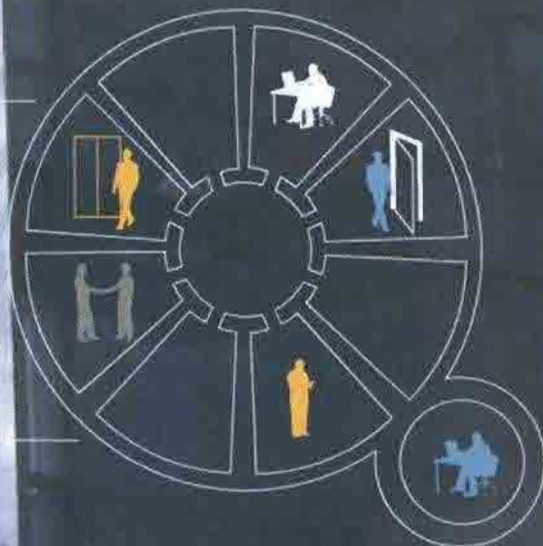
Cardex Plus - for security requiring access card only.



### ACCESS CONTROL MONITORING



**CARDAX FT:**  
**EXTENDING THE**  
**BOUNDARIES**



WHO'S MANAGING YOUR INTEGRATED SECURITY PLAN?

**cardax**





Keeping up with the day to day changes that occur within large organisations can present real challenges for security management.

Utilising IT industry protocols, Cardax FT can integrate with most existing information systems, such as student or staff databases, resource scheduling, visitor management, the payroll system, and paging.

This means only one point of data entry is needed to maintain employee/student/contractor records. Imagine, for a university, the impact of using the student registry database to automatically generate access information at enrolment time.

Lecture theatres can be unlocked at scheduled class times, with lighting and air-conditioning activated for the duration.

Using industry standard OPC, Cardax FT interfaces to Building Management for energy management functionality, based on area occupancy.

The Cardax FT system can grow from just a few monitored doors to thousands on distributed sites — accomplished without hardware redundancy or unreasonable costs. This means as a company adds new buildings, employees or even a new tenant, the expansion can easily be incorporated into the existing system — even across time zones and international borders.



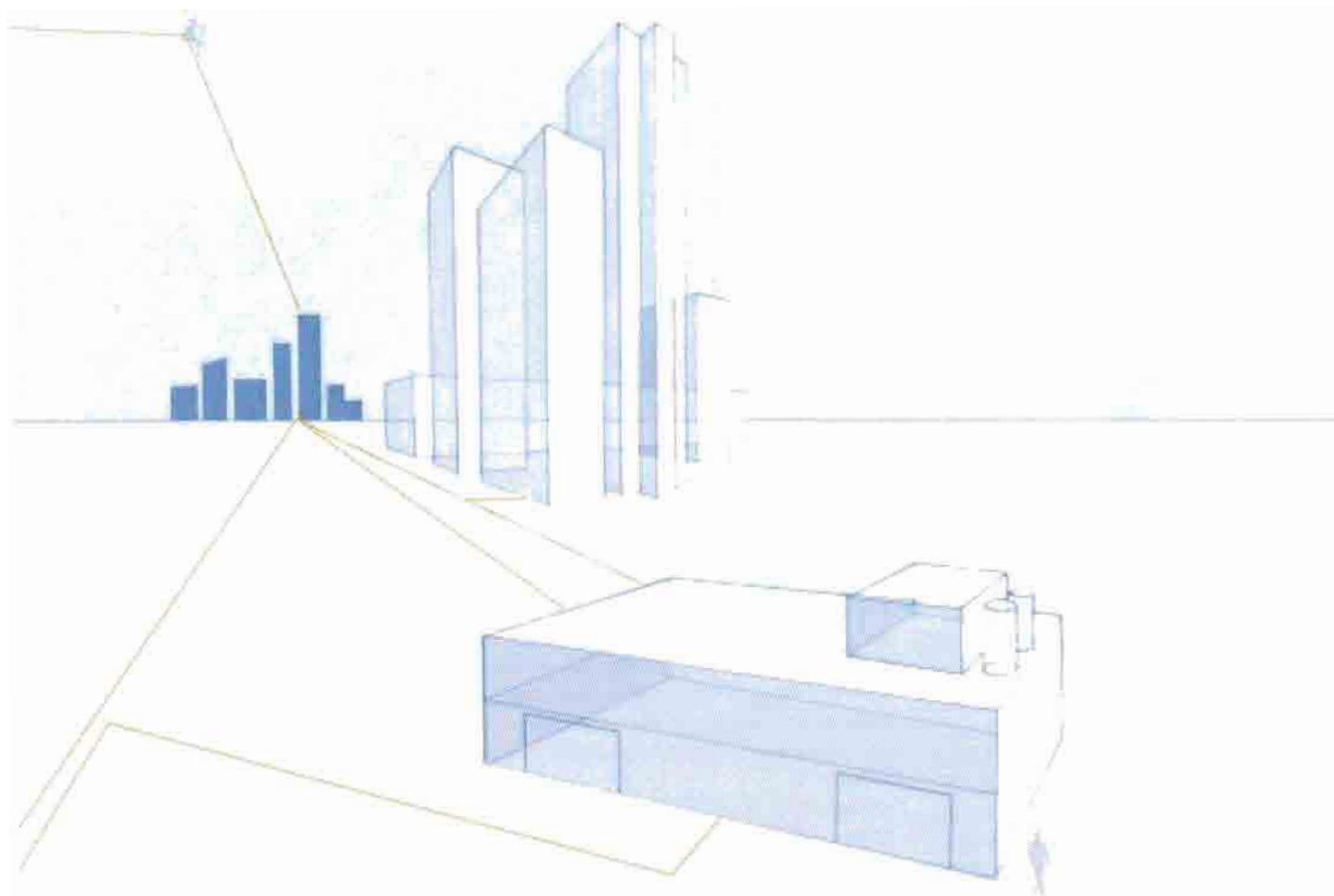
Large systems with distributed sites manage costs by bringing sites on to one centralised system.

Using IT infrastructure, remote bases are managed from the central Cardax FT system. Centralised access control and alarm monitoring can significantly reduce telecommunication and monitoring expenses. The head office in New York might have control over who gains access to the Sydney office in Australia. Furthermore, it will not matter if an employee is working in the Tokyo plant or the Dublin office — they will be able to use the same Cardax card.

The scope and inherent security of Cardax FT has proven the system to be a winner for market leaders in a diverse range of industries. From government to busy shipping ports, telecommunications companies to large scale banking and financial organisations — Cardax FT has the ability to meet the security needs of any enterprise.



A core system for security management and monitoring, the Cardax FT software provides a single graphical user interface.



## ACROSS THE ENTIRE ORGANISATION

CONVERTING TO THE NEW CARDAX FT BY

Some readers only require card, others card plus PIN. Some doors may require the cardholder to be visually verified by the operator, known as challenge.

Card readers can be installed in elevators, providing control and reporting of access to floors.

Multiple intercom systems are supported enabling intercom functionality to be integrated into Cardax FT.

Integrating access with resource bookings, lighting and air-conditioning often creates significant operational and energy efficiencies.

Powerfence™ perimeter security can be linked with Cardax FT, reporting any compromises or problems directly to the operator. A breach of the perimeter fence could activate cameras to record the site, as well as link the images to the event record in Cardax FT. Employees could also use their Cardax FT cards to open the perimeter gate or to turn the fence pulse off

System division enables individual sites or tenants within a large network to manage the security of the property that is pertinent only to them, without viewing other divisions. The cost of the system can then be shared by tenants, or managed centrally by a property manager.

It doesn't matter how many buildings your company has or where they are in the world,

they can all be effectively managed on the one system. While each building might have a Cardax FT workstation, it will be linked to the main server — allowing one central management system to monitor security right across the entire enterprise.

Utilise existing IT networks, and uses minimal bandwidth.

Manage access at short notice or in advance. Control visitor and contractor access as required. Any card can be cancelled within a keystroke — you'll never need to change the locks again. Produce a time-on-site report when required to reconcile contractor invoices against work done.





When you purchase a Cardax FT system you are recommended to invest in a Software Maintenance Agreement (SMA)

The SMA programme provides a cost effective means of obtaining future upgrades.

An SMA will help your system keep pace with Microsoft upgrades and regular Cardax FT releases designed to enhance system performance and functionality.

There may even be the opportunity to install new Cardax FT features onto your system.

We recommend that a SMA becomes the cornerstone of a total site security support plan. There may be up to four software releases a year depending on updates, but we commit to providing at least one release per calendar year.

You appoint your Cardax FT dealer to receive the software releases for you and provide the services for their implementation and ongoing support of your SMA.

Cardax is developed and manufactured by Gallagher Security Management Systems, a division of the Gallagher Group, a privately owned New Zealand based company. In addition to Cardax, Gallagher Security Management Systems also develops and markets PowerFence perimeter security systems.

Established in 1938, the Gallagher Group is the operating company for an integrated international organisation, which encompasses the development, manufacturing, and marketing of its solutions — animal management systems and security management systems.

The Gallagher Group is a well-established global business group with distributors located in over 100 countries across Europe, North and South America, Asia, Africa and the Pacific.



Using Cardax FT to integrate to an existing LAN/WAN

Cardax FT Command Centre Server

Microsoft Windows compatible printer

Cardax FT Command Centre Workstation

Existing LAN/WAN (TCP/IP over Ethernet)

Site Firewall

ISP (Internet Service Provider)

Cardax FT Dialler 3000

Cardax FT Controller 3000

Cardax FT Universal Reader Interface

Cardax FT Intelligent Door Terminal

Cardax FT Relay Interface

Cardax FT I/O Interface

Cardax FT Spike Controller

Cardax FT Intelligent Door Terminal

Cardax FT Reader I/O Interface

Cardax Prox Plus-Reader

Cardax Prox Reader

Cardax FT 8-input Expansion

Cardax FT I/O Expansion

Cardax FT Remote Arming Terminal

Cardax Prox Plus-Reader or Third Party Reader

To remote monitoring station

RS-485 commo over CAT 5 data cable at 38400 bps

- Up to 500 Cardax FT Controllers (Controller 3000 and 5000 combined)
- Up to 5000 Field Devices
- Up to 50 Operator Workstations
- Up to 4000 Cardax Readers

- Internet Protocol
- High Speed RS485
- Low Speed RS485
- Cardax IV Reader Comms
- RS232 Comms
- - Dial-up Connection



# Cardax FT Command Centre



Cardax FT Command Centre is the central management tool for the Cardax FT system. The software is powerful, and caters for a versatile feature set.



cardax

# Cardax FT Command Centre

Cardax FT Command Centre is the central control server for the Cardax FT security system.

Cardax FT Command Centre leverages client server architecture, enabling system operators to:

- Configure the site and all system components
- Manage cardholders, including their access using access groups
- Produce and print photo identification to cards
- Monitor alarms and interact with the system from site plans or other windows
- Retrieve and report on stored system information
- Communicate with people via Intercom enabled readers
- Interface to other third party systems.

The Cardax FT system is scalable, with Cardax FT Command Centre server options available based on the number of doors, from less than 16 doors to an unlimited number.

It is a powerful, yet operator friendly security system. Installed on a Pentium PC server, Cardax FT Command Centre resides on Microsoft® Windows® operating platforms.

It can be incorporated into a company's existing Local Area Network or Wide Area Network, or reside on its own dedicated network.

Cardax FT Command Centre links to Cardax FT Controllers (3000 and 5000) and to operator workstations over Ethernet using TCP/IP, a world standard network and Internet transmission

protocol. Using this protocol means the system communications are Internet compatible.

## Operating Platforms

The Cardax FT Command Centre server and workstation software reside on the Microsoft® Windows® operating system.

The database options are Microsoft® SQL 2000 Desktop Engine or Microsoft® SQL Server 2000 (any version), depending on the system requirements.

Renowned for its data integrity and performance, Microsoft® SQL is a commonly specified database used globally in a range of applications. It is easy to integrate and share selected data held in Cardax FT Command Centre with other systems using the SQL Server database.

Please contact Gallagher Security Management Systems or your Cardax office for information relating to current operating platforms supported.

## Distributed Processing

Distributed processing is a significant feature of the Cardax FT system architecture.

The relevant fields of the cardholder database, alarm configuration and security parameters are downloaded to the Cardax FT Controllers allowing for local access and alarm control decisions.

All Cardax FT field devices connecting to Cardax FT Controllers can operate independently of the Cardax FT Command Centre server. This ensures that if the site

experiences network communications problems, full operation of access control and alarms management is maintained.

Cardax has a range of industrial switches to provide a solution for redundant Ethernet network communications.

Peer-to-peer communications can be configured to set up relationships between Controllers for flexible and efficient system configuration.

Cardax FT Controllers (3000 and 5000) can also be configured for dial-up for the support of remote sites, and for off-site alarm monitoring.

## Data Security

All data over the network between the Cardax FT Command Centre and Cardax FT Controllers uses 40-bit encrypted Secure Sockets Layer (SSL) technology. This standard is similar to the technology used to secure Internet banking transactions. *High-level (168-bit) encryption* is available as an optional licensed feature.

## Ease of Configuration

Cardax FT Command Centre features Configuration Wizards and Templates, tools to support the ease of new system installation. Configuration wizards enable access controlled doors and new hardware to be quickly and easily configured in Cardax FT Command Centre while Database Template functionality allows a standard configuration to be applied to sites with common requirements.

Authorised operators monitor alarms at Command Centre workstations.

This can be complemented with:

- Cardax FT Remote Arming Terminals for alarms management in the field
- Offsite alarm monitoring utilising Contact ID transmitted via Cardax FT Controllers.

### Cardholder Management

Cardax FT Command Centre provides an extensive cardholder database.

Each cardholder record includes personal cardholder information and access information;

- Up to 64 personal data fields where personal data can be entered

devices.

Cardholder data can be shared with third party applications via the XML Interface.

An XML Software Developers' Kit is supplied on the Cardax FT Command Centre software CD.

### Personal Data Fields

Personal data fields hold the relevant personal data required for a cardholder. For example, the department in which they work and who they report to.

Personal data fields are created as separate entities and are attached to access groups. Cardholders inherit the personal data fields from the access groups to which they belong.

Fields an operator can see and change through their operator privileges.

### Card Encoding

Cardax Swipe cards can be encoded from within Cardax FT Command Centre. The Card Encoding Wizard is designed for card enrolment, printing, and encoding.

### Access Groups

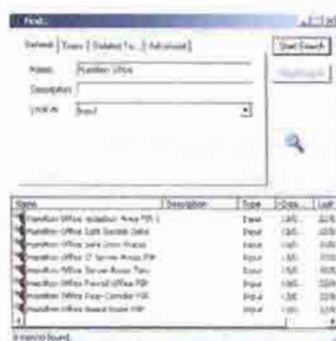
Access groups make it possible to define access for groups of cardholders who share the same requirements.

Each access group is named and includes the following information:

- Access – where and when members of the group have access
- Members – a list of cardholders who



Personal Data Fields



The Find Window



Time and Attendance Report

- The access groups to which the cardholder belongs
- Detailed information about the card(s) held by the cardholder, for example, card number, facility code, technology type, issue level, and expiry date and time. Universal Card Formats enables multiple third party Wiegand formats of up to 360 bit to be supported concurrently in the Cardax FT system.

Subject to system division and operator privileges, an operator can create, delete and change cardholder records in the system. Any changes made are recorded as events. The system automatically down-loads any changes made to the cardholder record to the relevant field

When viewing a cardholder's record, it will contain all the personal data fields specified in the access group(s) the cardholder belongs to.

Personal data fields can be configured to be unique, mandatory, numeric or alphanumeric.

A personal data field can also contain an image which can then be used for PhotoID and cardholder Challenge. Cardax FT Command Centre has a fully integrated access control photo identification system (Cardax FT PhotoID).

Each cardholder record can have up to 64 personal data field definitions. It is possible to restrict the Personal Data

belong to the access group

- Personal Data Fields – a collection of personal data field definitions attached to individual members
- Escort – whether the members are allowed to act as escorts for visitors
- Arm/Disarm alarm zones (areas) – member authorisation to arm and disarm certain alarms
- Whether members can change the state of the access zones.

Access groups are displayed as a tree with branches having more specific access.

A cardholder may belong to one or more access groups to get their full access privileges.

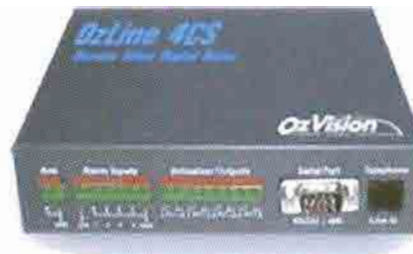
**TECHNICAL SPECIFICATIONS****Cardax FT Command Centre**

<b>Command Centre Server Options</b>		Up to 16 doors Up to 64 doors Up to 128 doors Up to 256 doors Unrestricted
<b>Recommended Computer Specifications</b>	A number of variables e.g. event rate, will affect the recommended computer hardware specifications. Please discuss your requirements with Cardax Technical Support.	
<b>Operating System**</b>	Server	Microsoft® Windows® 2000 or 2003, or XP Professional
	Workstation	Microsoft® Windows® 2000 or 2003, or XP Professional
<b>Printer</b>	Any Microsoft® Windows® compatible printer	
<b>Configured workstations</b>	Maximum Number	Unlimited
<b>Operator Authorisation Level</b>	Fully configurable for each operator	
<b>Configured Operators</b>	Max. number of configured operators	Unlimited
<b>Simultaneous Logons</b>	Max. number of operators simultaneously logged on	Unlimited
<b>Cardax FT Hardware</b>	Cardax FT Controllers (3000 & 5000)	500*
	Field Devices	See Controller datasheets
<b>Number of Cardholders</b>	Command Centre	100 000*
	Note: Cardax FT Controller 3000 & 5000 capacity is limited to 30 000 Cardholder records stored per Controller	
<b>Event Database</b>	Command Centre	Unlimited
	Note: Cardax FT Controller 3000 & 5000 capacity is limited to 10 000 Events stored per Controller	
<b>Card Issue Levels</b>		15
<b>Maximum Access Controlled Doors</b>		4 000*
<b>Access Control Zones</b>	Max. number of access controlled zones	4 000*
<b>Controlled Outputs</b>	Max. number of relays	20 000*
<b>Alarm Inputs</b>	Max. number of inputs	30 000*
<b>Elevator Control - low level</b>	Maximum of 50 elevator cars each with up to 75 levels 1 or 2 elevator shafts per Cardax FT Controller Cardax Technical Support recommends using the Cardax FT Controller 5000 architecture for low level elevator control	

\* Indicative numbers only. System configuration, network capacities and the volume of system activity affect performance. Please contact Cardax for advice.

\*\* Version requirement is dependant on site application.





## **ARMED HOLD-UP VERIFICATION SERVICE – VIDEO MONITORED INTRUDER ALARMS**

Cage Security can provide services to ensure you're safety & security, our own 24hr Security Operations & Monitoring Centre which receives pre and post alarm video images, enabling monitoring operators to prioritise and verify alarms – a perfect solution to the false alarm problems.

OzVision's OzLine 4CS is a new cost-effective, plug and play, color digital video dialer - a video transmission system with four video inputs that delivers high-quality remote video images over standard telephone lines.

Because the OzLine 4CS works with most existing CCTV equipment, there is no need to reconfigure the entire location with special cameras or wiring. The unit can be interconnected to most alarm panels and can be set to record and transmit pre- and post-alarm activity. The unit has four video inputs, four alarm inputs, a built-in video switcher and can control up to four external devices such as lights, doors and sounders as well as the PTZ (pan/tilt/zoom) of cameras.

### **Benefits of the Armed hold up verification system**

- Provides video-verified alarm conditions to Cage Security 24hr Security Operations & Monitoring Centre
- Allows a "verified" alarm status to be reported to the Police
- Works with your existing Alarm Panel
- Automatically streams video over standard mobile or copper phone lines
- Inexpensive and utilises existing equipment
- Provides Police with the opportunity to escalate the priority and respond accordingly
- Full kit includes Ozline 4, Colour Camera with Infra-red light, battery backup and installation





### **32 CHANNEL REAL-TIME DIGITAL VIDEO RECORDER**

A powerful real-time solution for up to 32 channels offering a flexible highly featured system built with world leading technology to provide solutions for the most demanding of requirements. Provides real-time recording on all channels that are full screen high quality resolution, with easy control to pan, tilt and zoom. Remote access is available via Internet, LAN or modem using explorer software.

**The Real Time Digital Video Recorder offers the following benefits : -**

- Watch live and playback at the same time
- Real time recording on all channels
- Records FASTER and for LONGER than any DVR on the market today

- Records full screen 704 x 576 images at 25 frames per second (Real time Recording & Viewing) on ALL cameras
- Most cost-effective video recording solution available today
- Provides 31 days storage cycle on-board at full screen resolution at 25 frames per second on EVERY camera
- Never miss that split second important moment again
- Available in 4, 8, 16, 24 and 32 channel models