

WOOLLARA MUNICIPAL COUNCIL
 APPROVED 11-4-00
 SUITABLE IN accordance with Part 40 of the Local Government Act, 1988 (Queensland) and the provisions of any approval submitted in the Building Details.
 CHIEF BUILDING SURVEYOR

1:10000 REDRAW
 17-10-00 1096* GA01 B
 SAHLEN GROUP OF COMPANIES

 THE RITZ-CARLTON
 DOUBLE BAY
 DESIGN AND CONSTRUCTION BY
 TRIDEN TRIDEN CONTRACTORS LIMITED
 110 WILSON STREET, NORTH BRISBANE, QLD 4059
 (07) 5522 1114 FAX (07) 5522 1122
 LEFFLER SIMES ARCHITECTS
 7 WALNUT STREET, MULLUMBAIDIE, QLD 4280
 (07) 4632 2323 FAX (07) 4632 2328
SITE PLAN
 SCALE: 1:1000
 1096* GA01 B

PRINTED
 16 NOV 2000
 \$1500
 Scaled
 1096* GA01 B

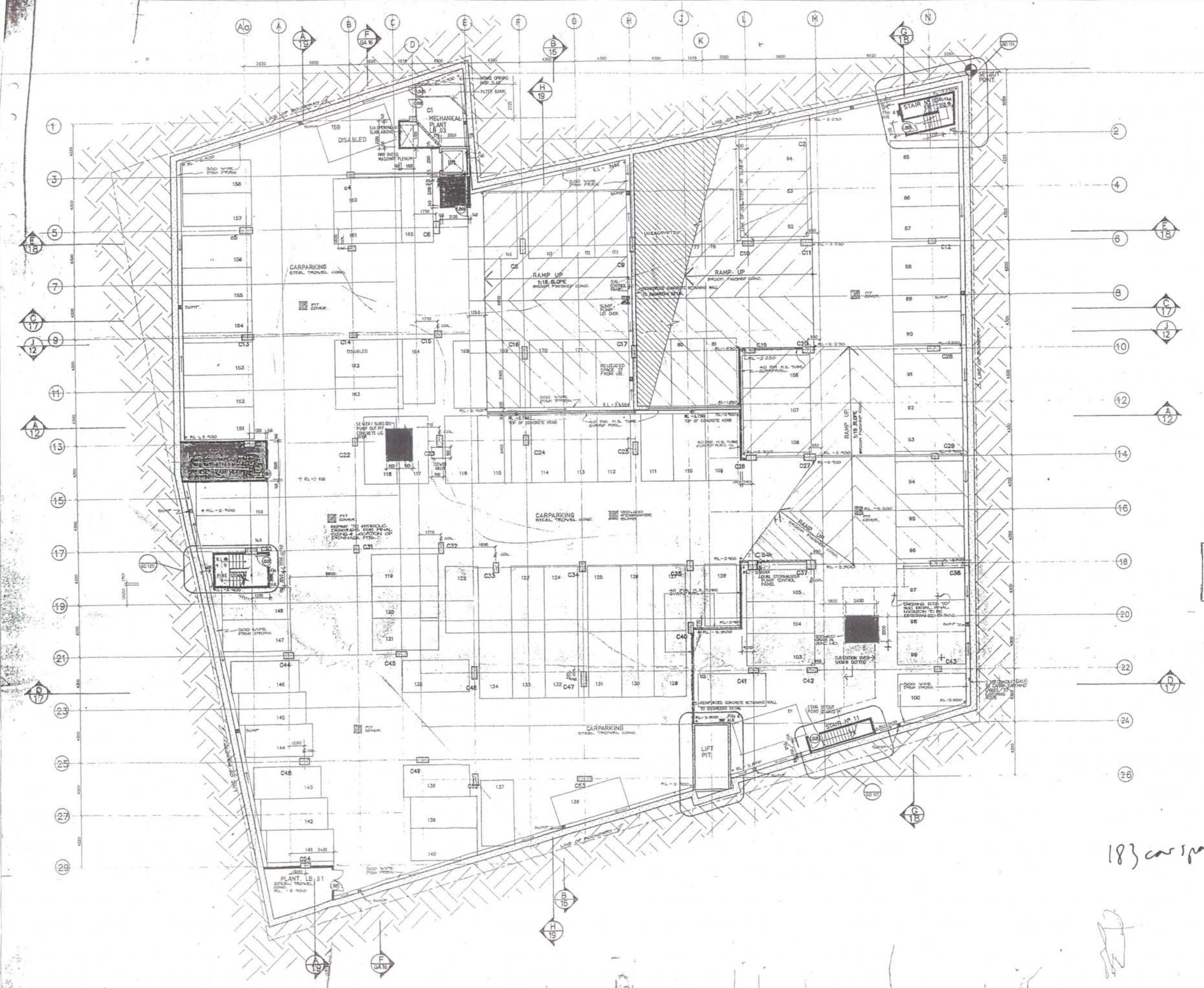
THIS DRAWING AND DESIGN IS SUBJECT TO THE RIGHT AND MAY BE REPRODUCED WITHOUT PRIOR WRITTEN CONSENT. THE CONTRACTOR SHALL BE RESPONSIBLE FOR OBTAINING ALL NECESSARY PERMITS AND APPROVALS. ANY DISCREPANCIES TO BE REFERRED TO ARCHITECT. USE DIMENSIONS SHOWN ONLY.



LEGEND

WALL TYPES

- REINFORCED CONCRETE WALLS COLUMN/BEAMS
- 200MM RIGID CORE & SOLID CONCRETE BLOCK PER RATED WALLS RATING AS SPECIFIED ON DWG
- 200MM RIGID CORE & SOLID CONCRETE BLOCK WALL
- STEEL STUD PLASTERBOARD WALL SYSTEM STUD SIZE AS SPECIFIED
- FIVE RATED STEEL STUD PLASTERBOARD WALL SYSTEM RATING AS SPECIFIED ON DWG
- FIVE RATED DOUBLE STEEL STUD PLASTERBOARD WALL SYSTEM RATING AS SPECIFIED ON DWG



WOOLLAHBA MUNICIPAL COUNCIL
 APPROVED 11-4-90
 Subject to compliance with Part 90 of the local Government Act, relevant Ordinances, and conditions of Approval contained in the Building Permit.
 T.W. [Signature]
 CHIEF BUILDING SURVEYOR

J	10-10-89	RELOCATED STAIRS AT STAIR AM 10 & STAIR AM 11 TO BE RELOCATED TO STAIR AM 10 & STAIR AM 11 LOCATIONS
K	3-8-89	RELOCATED STAIRS AT STAIR AM 10 & STAIR AM 11 TO BE RELOCATED TO STAIR AM 10 & STAIR AM 11 LOCATIONS
L	26-8-89	RELOCATED STAIRS AT STAIR AM 10 & STAIR AM 11 TO BE RELOCATED TO STAIR AM 10 & STAIR AM 11 LOCATIONS
M	5-7-89	RELOCATED STAIRS AT STAIR AM 10 & STAIR AM 11 TO BE RELOCATED TO STAIR AM 10 & STAIR AM 11 LOCATIONS
N	6-5-89	RELOCATED STAIRS AT STAIR AM 10 & STAIR AM 11 TO BE RELOCATED TO STAIR AM 10 & STAIR AM 11 LOCATIONS
O	1-5-89	RELOCATED STAIRS AT STAIR AM 10 & STAIR AM 11 TO BE RELOCATED TO STAIR AM 10 & STAIR AM 11 LOCATIONS
P	1-5-89	RELOCATED STAIRS AT STAIR AM 10 & STAIR AM 11 TO BE RELOCATED TO STAIR AM 10 & STAIR AM 11 LOCATIONS
Q	1-5-89	RELOCATED STAIRS AT STAIR AM 10 & STAIR AM 11 TO BE RELOCATED TO STAIR AM 10 & STAIR AM 11 LOCATIONS
R	1-5-89	RELOCATED STAIRS AT STAIR AM 10 & STAIR AM 11 TO BE RELOCATED TO STAIR AM 10 & STAIR AM 11 LOCATIONS
S	1-5-89	RELOCATED STAIRS AT STAIR AM 10 & STAIR AM 11 TO BE RELOCATED TO STAIR AM 10 & STAIR AM 11 LOCATIONS
T	1-5-89	RELOCATED STAIRS AT STAIR AM 10 & STAIR AM 11 TO BE RELOCATED TO STAIR AM 10 & STAIR AM 11 LOCATIONS
U	1-5-89	RELOCATED STAIRS AT STAIR AM 10 & STAIR AM 11 TO BE RELOCATED TO STAIR AM 10 & STAIR AM 11 LOCATIONS
V	1-5-89	RELOCATED STAIRS AT STAIR AM 10 & STAIR AM 11 TO BE RELOCATED TO STAIR AM 10 & STAIR AM 11 LOCATIONS
W	1-5-89	RELOCATED STAIRS AT STAIR AM 10 & STAIR AM 11 TO BE RELOCATED TO STAIR AM 10 & STAIR AM 11 LOCATIONS
X	1-5-89	RELOCATED STAIRS AT STAIR AM 10 & STAIR AM 11 TO BE RELOCATED TO STAIR AM 10 & STAIR AM 11 LOCATIONS
Y	1-5-89	RELOCATED STAIRS AT STAIR AM 10 & STAIR AM 11 TO BE RELOCATED TO STAIR AM 10 & STAIR AM 11 LOCATIONS
Z	1-5-89	RELOCATED STAIRS AT STAIR AM 10 & STAIR AM 11 TO BE RELOCATED TO STAIR AM 10 & STAIR AM 11 LOCATIONS

183 car spaces?

PRINTED
18 NOV 1995

Sahben
GROUP OF COMPANIES

THE RITZ-CARLTON
DOUBLE BAY

TRIDEN

LEFFLER SIMES ARCHITECTS

1100 BAYVIEW AVENUE, SUITE 100, SYDNEY, NSW 2002
 PHONE: (02) 955 1234
 FAX: (02) 955 1235

TITLE: LOWER BASEMENT TWO

SCALE: 1:50
 DRAWN: C.E.D.
 CHECKED: G.A.D.
 DATE: 1096 GA D2

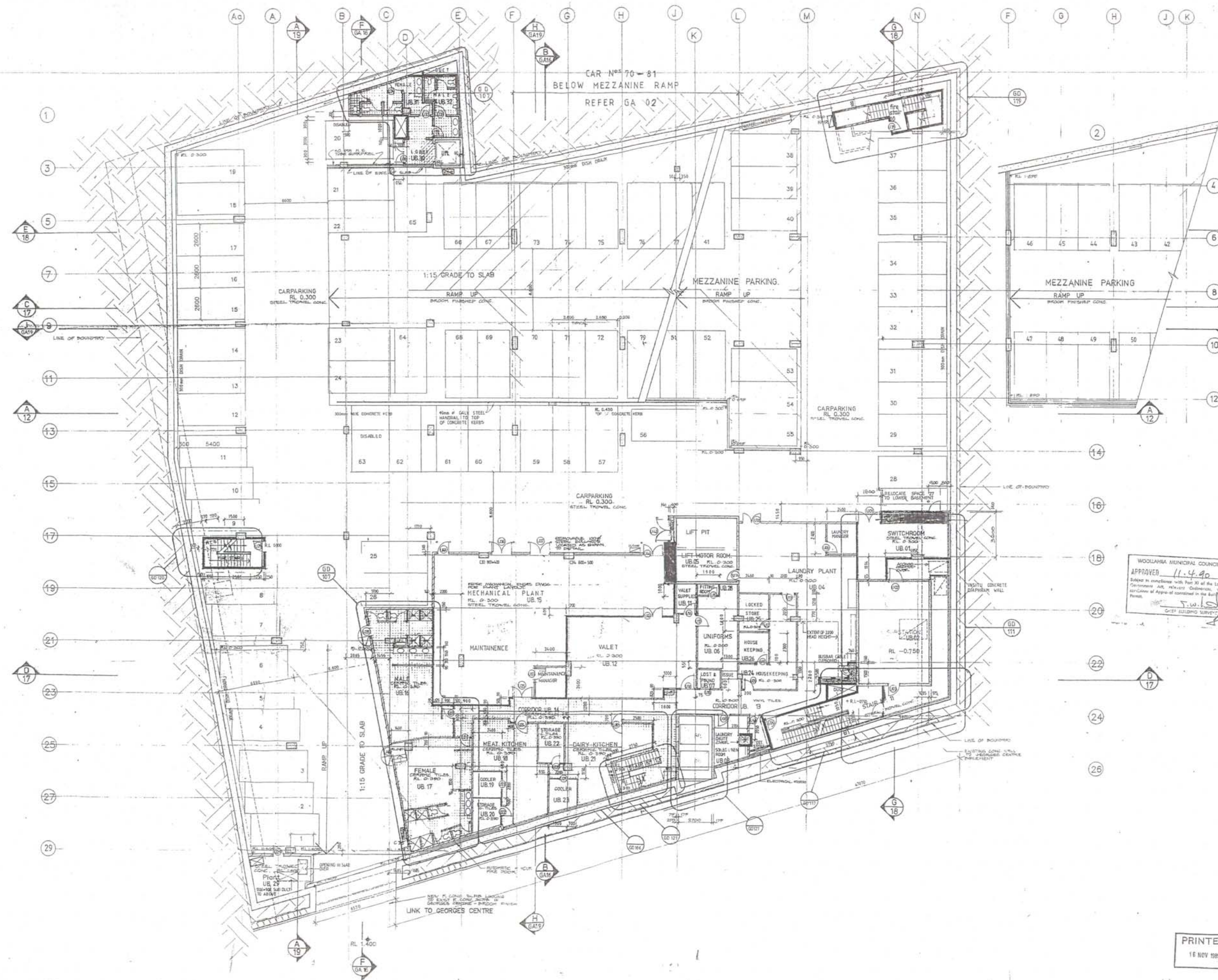
THIS DRAWING AND DESIGN IS SUBJECT TO COPYRIGHT AND MAY NOT BE REPRODUCED WITHOUT PERMISSION FROM THE ARCHITECT. ALL DIMENSIONS TO BE GIVEN FROM TO CORNER POINT OF ANY WORK UNLESS OTHERWISE TO BE NOTED TO OTHERWISE. USE PAVED DIMENSIONS ONLY.



LEGEND

WALL TYPES

- REINFORCED CONCRETE WALL/COLUMN/BEAM
- REINFORCED CONCRETE BLOCK FINE WARE WALL RATING AS SPECIFIED ON DWG
- REINFORCED CONCRETE BLOCK WALL
- STEEL STUD PLASTERBOARD WALL SYSTEM STUD SIZE AS SPECIFIED
- FIRE RATED STEEL STUD PLASTERBOARD WALL SYSTEM RATING AS SPECIFIED ON DWG
- FIRE RATED DOUBLE STEEL STUD PLASTERBOARD WALL SYSTEM RATING AS SPECIFIED ON DWG



WOOLAHRA MUNICIPAL COUNCIL
 APPROVED 11.4.90
 J.W.S.
 CIVIL BUILDING SURVEYOR

1	16.10.88	REVISIONS	REVISIONS	REVISIONS
2	16.10.88	REVISIONS	REVISIONS	REVISIONS
3	16.10.88	REVISIONS	REVISIONS	REVISIONS
4	16.10.88	REVISIONS	REVISIONS	REVISIONS
5	16.10.88	REVISIONS	REVISIONS	REVISIONS
6	16.10.88	REVISIONS	REVISIONS	REVISIONS
7	16.10.88	REVISIONS	REVISIONS	REVISIONS
8	16.10.88	REVISIONS	REVISIONS	REVISIONS
9	16.10.88	REVISIONS	REVISIONS	REVISIONS
10	16.10.88	REVISIONS	REVISIONS	REVISIONS
11	16.10.88	REVISIONS	REVISIONS	REVISIONS
12	16.10.88	REVISIONS	REVISIONS	REVISIONS
13	16.10.88	REVISIONS	REVISIONS	REVISIONS
14	16.10.88	REVISIONS	REVISIONS	REVISIONS
15	16.10.88	REVISIONS	REVISIONS	REVISIONS
16	16.10.88	REVISIONS	REVISIONS	REVISIONS
17	16.10.88	REVISIONS	REVISIONS	REVISIONS
18	16.10.88	REVISIONS	REVISIONS	REVISIONS
19	16.10.88	REVISIONS	REVISIONS	REVISIONS
20	16.10.88	REVISIONS	REVISIONS	REVISIONS
21	16.10.88	REVISIONS	REVISIONS	REVISIONS
22	16.10.88	REVISIONS	REVISIONS	REVISIONS
23	16.10.88	REVISIONS	REVISIONS	REVISIONS
24	16.10.88	REVISIONS	REVISIONS	REVISIONS
25	16.10.88	REVISIONS	REVISIONS	REVISIONS
26	16.10.88	REVISIONS	REVISIONS	REVISIONS
27	16.10.88	REVISIONS	REVISIONS	REVISIONS
28	16.10.88	REVISIONS	REVISIONS	REVISIONS
29	16.10.88	REVISIONS	REVISIONS	REVISIONS

Sahben
 GROUP OF COMPANIES



DESIGN AND CONSTRUCTION BY
TRIDEN TRIDEN CONTRACTORS LIMITED
 110 Howe Street, North Sydney, NSW
 Tel: 915 3221 Fax: 915 3222

LEFFLER SIMES
 ARCHITECTS
 70-72 Macquarie Street, Sydney, NSW
 Tel: 915 3221 Fax: 915 3222

UPPER BASEMENT
 SCALE 1:100
 DATE 10.9.90

PRINTED
 18 NOV 1990

THIS DRAWING AND SECTION IS SUBJECT TO COPYRIGHT AND MAY NOT BE REPRODUCED WITHOUT PERMISSION FROM THE ARCHITECT. ALL DIMENSIONS TO BE SHOWN FROM TO CORNER UNLESS OTHERWISE SPECIFIED. ANY DIMENSIONS TO BE SHOWN FROM TO CORNER UNLESS OTHERWISE SPECIFIED. THE FINISH DIMENSIONS ONLY.

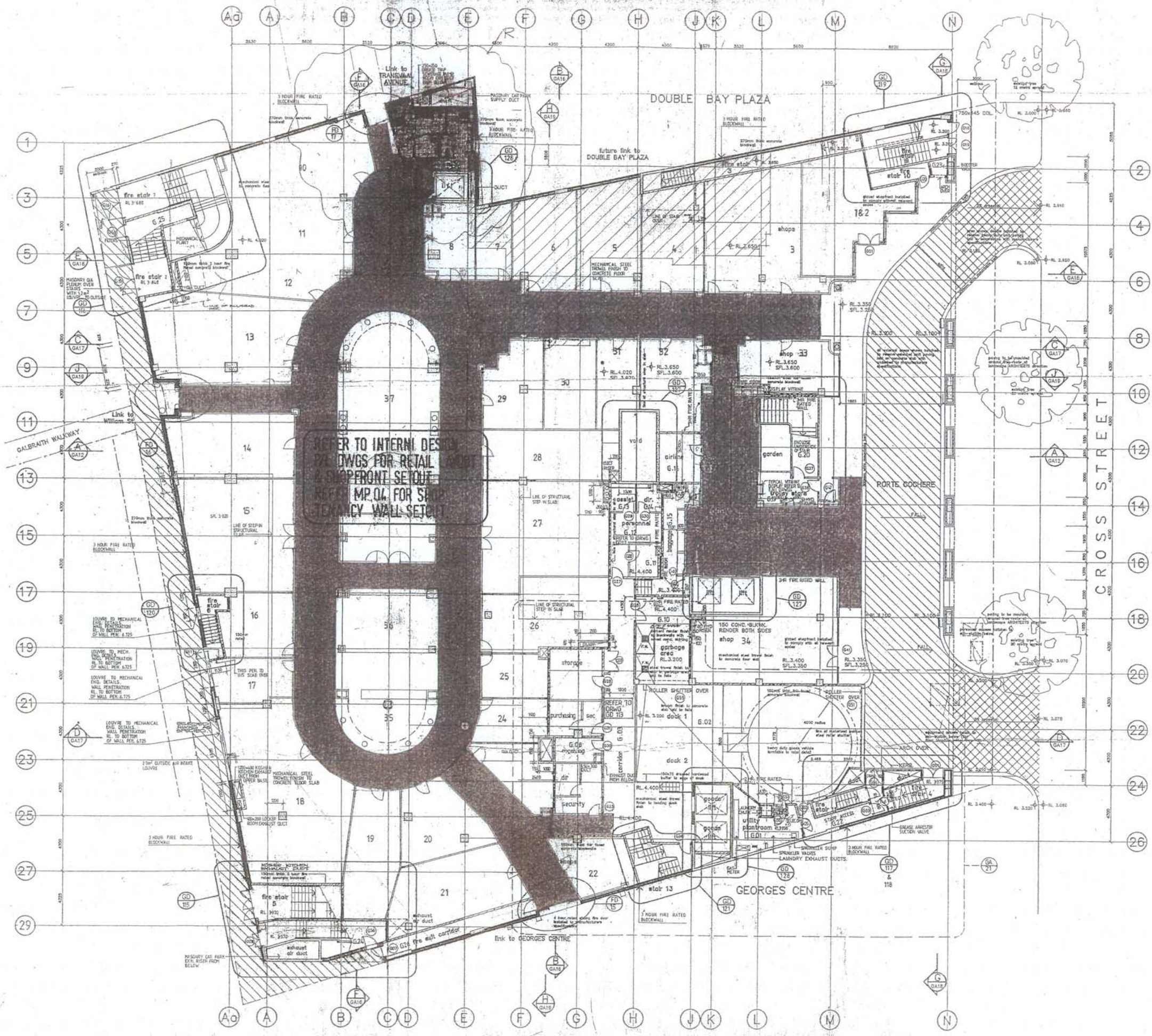


LEGEND

WALL TYPES

- 150mm CONCRETE WALL (COLUMN/BEAM)
- 150mm REDUCED CORE & SOLID CONCRETE BLOCK FIRE RATED WALL RATING AS SPECIFIED ON DWG
- 150mm HOLLOW CONCRETE BLOCK WALL
- STEEL STUD PLASTERBOARD WALL SYSTEM STUD SIZE AS SPECIFIED
- FIRE RATED STEEL STUD PLASTERBOARD WALL SYSTEM RATING AS SPECIFIED ON DWG
- FIRE RATED DOUBLE STEEL STUD PLASTERBOARD WALL SYSTEM RATING AS SPECIFIED ON DWG

- 25.11.02. SITE DESIGN & CONSTRUCTION APPROVED TO PERMIT
- 6.1.90.01. LOCATE NEW TOILETS TO EXISTING SHOP FLOOR
- 11.10.01. COLUMN ADDED AT 1511 TO SUPPORT SLAB OVER PERIMETER WALLS (COLORADO). EXTERNAL PENETRATIONS THRU NORTH WALL AMENDED.
- 20.9.02. INTERIOR DESIGN TENANCY LAYOUT EXTERNAL PENETRATIONS THRU NORTH WALL ADDED.
- 21.4.01. DOUBLE GLAZED 6516 AMENDED & 618 REDUCED DOORS G14 G17 G18 G19 LOCATED.
- PERSONNEL OFFICE AMENDED LOADING DOCK OFFICES AMENDED MECHANICAL DUCTS AT GRID 11-13 & F-23 AMENDED.
- GA18.01. GALBRAITH WALKWAY ENTRANCE (LINKED TO G10) SHOPPING AREA AMENDED.
- GA19.01. SERVICE AREAS SECTION WIDE (SPRINKLER) LOCATED UNDER FIRE STAIR & CARPARK LIFT EXTENDED TO 2550.
- GA20.01. SILENT AMPLIFIERS NEAR G13 ADDED SELECT AND TELECOM CUPBOARDS TO CORRIDOR G14-G15.
- GA21.01. TRILLEY STONE WITH AMENDED ROOFER KITCHEN DUCT RELOCATED DUCT IN PURCHASING OFFICE SPIN DUCT TO AUTO FIRE COOKS FIRE STAIR 3 RIS AMENDED LIFT RELIEF DUCT LOCATED UTILITY PLANT ROOM AMENDED RIVER DUCTS & BAGGAGE LIFT OFFICE WIND & ROOSTER VALVE PLANTROOM 5.02 ADDED REVISED STAIRS 15.21.02.3.
- GA22.01. ADJUST PARTS TO FILL LAYOUT RELOCATE PERSONNEL & RECEPTION OFFICES AMENDED STAIRS AMENDED DUCTS ADDED SELECT & TELECOM CUPBOARDS.
- GA23.01. LOCAL SILENT DISTRIBUTION VENTILATION DUCTS AND ROOSTER PUMP VALVES.
- GA24.01. LINK TO TRANSVAL AVE ADDED.
- RAMP AND SLAB LEVELS AT 118 AMENDED/LOOK SERVICE AND GARBAGE AREAS AMENDED.
- GA25.01. SIGNAGES SHOP DELETED MEZZANINE SHOP OFFICES.
- GA26.01. DOCK OFFICES REARRANGED MACHINE FIT TO TURNABLE GALWATER METER ROOM ADDED.
- GA27.01. SIDE SILENT FIT TO DRIVEWAY.
- GA28.01. ISSUES FOR CONTRACT.



REFER TO INTERNAL DESIGN DRAWINGS FOR RETAIL SHOP FRONT SETOUT AND MP.04 FOR SHOP FRONT WALL SETOUT

PRINTED
28 NOV 1995

Sahben
GROUP OF COMPANIES

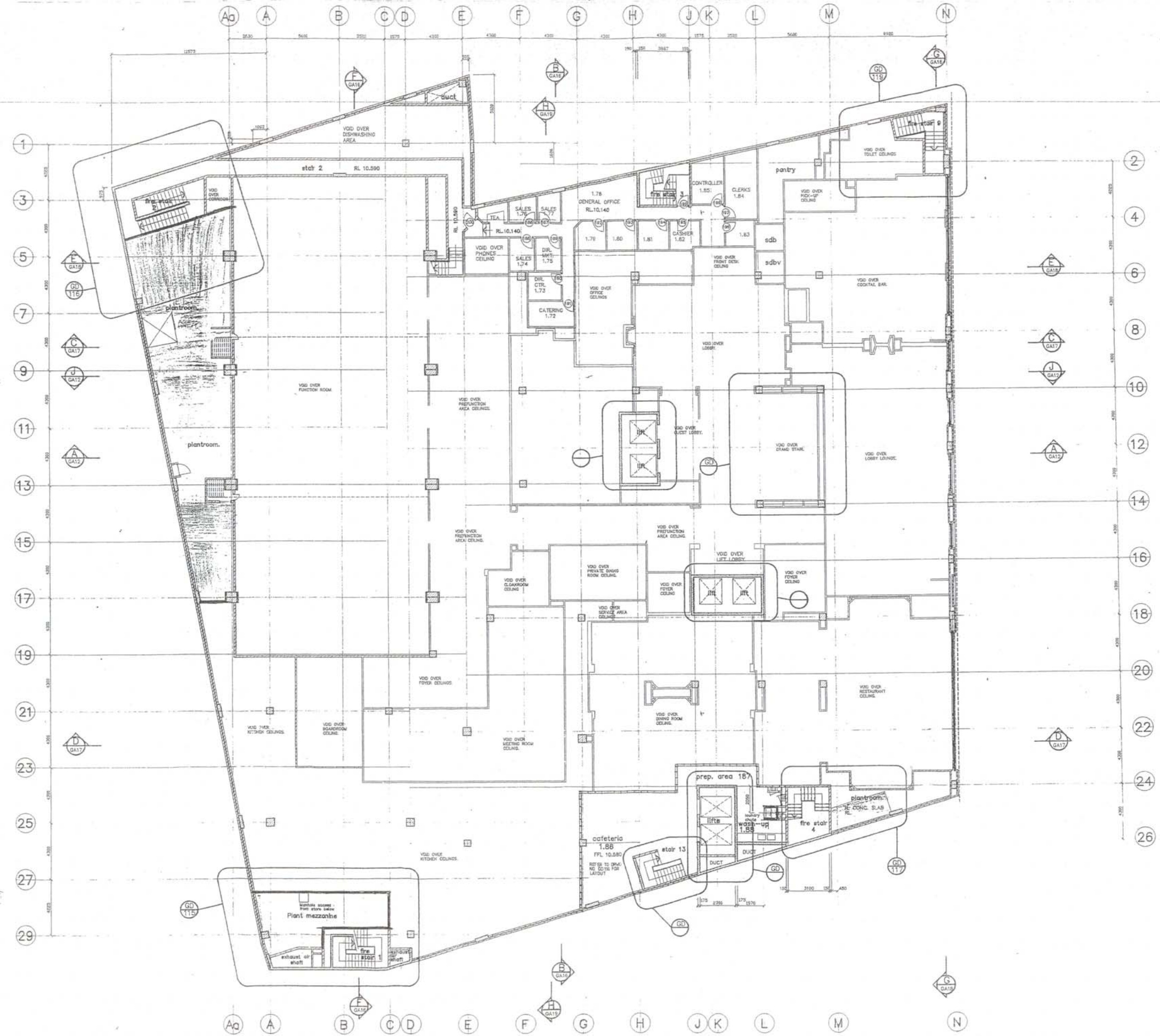
THE RITZ-CARLTON
DOUBLE BAY

DESIGN AND CONSTRUCTION BY
TRIDEN TRIDEN CONTRACTORS LIMITED
117 TORREY STREET, NORTH SYDNEY, NSW
TEL: 915 5221 FAX: 915 5222

LEFFLER SIMES
ARCHITECTS
117 TORREY STREET, NORTH SYDNEY, NSW
TEL: 915 5221 FAX: 915 5222

TITLE: **GROUND FLOOR PLAN**

DATE: NOV 85 PROJECT NO: 305
SCALE: 1:100 DRAWING NO: GA04
REV: 01 1096



WOLLAHRA MUNICIPAL COUNCIL
APPROVED 11-4-90
Subject to compliance with Part 35 of the Local Government Act, relevant Ordinances, and conditions of approval contained in the Building Permit.
I. W. L. J.
CHIEF BUILDING SURVEYOR

S	21-11-89	PLANT RM. ADDED LAUNDRY CHUTE ALTERED
A	15-09-89	DIMENSIONS ADDED ISSUED TO BUILDER
DATE	SUBMITTAL	
Sahben GROUP OF COMPANIES		
DESIGN AND CONSTRUCTION BY		
TRIDEN TRIDEN CONTRACTORS LIMITED 112 Marine Drive, North Sydney, NSW PO Box 1532, North Sydney NSW NSW 1585, Tel: 943 6800		
LEFFLER SIMES ARCHITECTS 7 Young Street, Neutral Bay NSW 2088 STONEY AUSTRALIA PH 438 909 2344 FAX 438 909 3829		
THIS MEZZANINE FLOOR PLAN		
DRAWN BY DARYL C&G	PROJECT NO. 1096	DRAWING NO. GA05

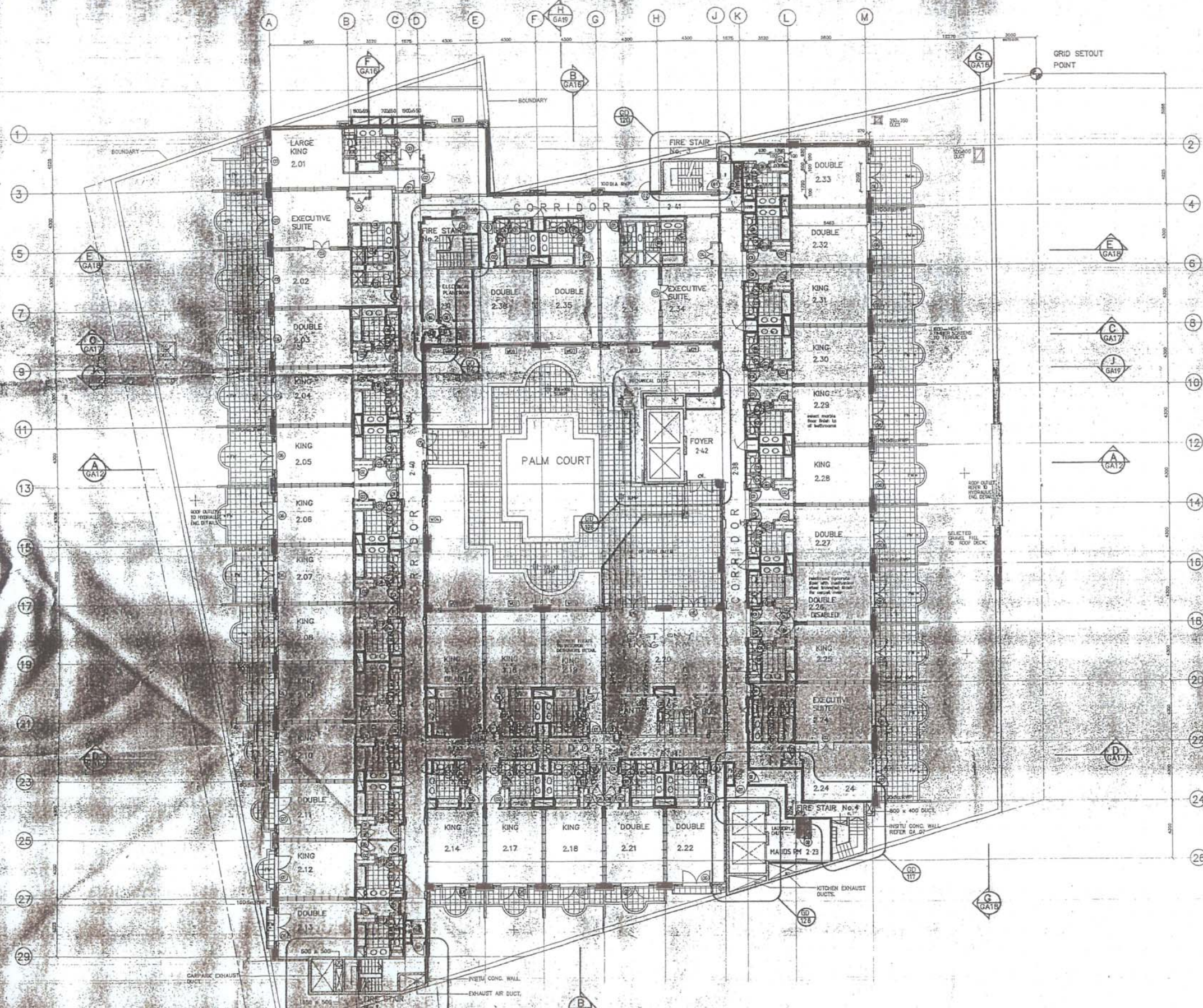
PRINTED
18 NOV 89

AQ A B C D E F G H J K L M N

THIS DRAWING AND EVERY PART THEREOF IS SUBJECT TO THE ACTS AND REGULATIONS OF THE GOVERNMENT OF NEW SOUTH WALES AND TO ANY AMENDMENTS THEREOF. ALL WORKMANSHIP TO BE SHOWN HEREON IS TO BE IN ACCORDANCE WITH THE ACTS AND REGULATIONS OF THE GOVERNMENT OF NEW SOUTH WALES. THE CONTRACTOR SHALL BE RESPONSIBLE FOR OBTAINING ALL NECESSARY PERMITS AND APPROVALS FROM THE APPROPRIATE AUTHORITIES. THE CONTRACTOR SHALL BE RESPONSIBLE FOR OBTAINING ALL NECESSARY PERMITS AND APPROVALS FROM THE APPROPRIATE AUTHORITIES. THE CONTRACTOR SHALL BE RESPONSIBLE FOR OBTAINING ALL NECESSARY PERMITS AND APPROVALS FROM THE APPROPRIATE AUTHORITIES.



LEGEND	
WALL TYPES	
	REINFORCED CONCRETE WALLS (COLUMN/BEAM)
	CONCRETE BLOCK WALLS (FIRE RATED WALLS HAVING AS SPECIFIED ON SHEET)
	MASONRY WALLS (CONCRETE BLOCK WALL)
	STEEL STUD WALL SYSTEM (PLASTERBOARD WALL SYSTEM) (FIRE RATED AS SPECIFIED)
	FIRE RATED WALLS (STEEL STUD WALL SYSTEM) (PLASTERBOARD WALL SYSTEM) (FIRE RATED AS SPECIFIED ON SHEET)
	FIRE RATED WALLS (CONCRETE BLOCK WALL SYSTEM) (PLASTERBOARD WALL SYSTEM) (FIRE RATED AS SPECIFIED ON SHEET)



WOOLLAHRA MUNICIPAL COUNCIL
 APPROVED 11.4.90
 T. W. S. S.
 CIVIL BUILDING SURVEYOR

1	FACADE: REINFORCED CONCRETE
2	DOOR NO. ADDED
3	EXECUTIVE SUITE 2-36 BATHROOM AMENDED
4	FIRE STAIR 1 APPROVED
5	LAUNDRY CRUISE ADDED
6	EXECUTIVE SUITE 2-34 BATHROOM AMENDED
7	FIRE STAIR 1 APPROVED
8	LAUNDRY CRUISE ADDED
9	EXECUTIVE SUITE 2-34 BATHROOM AMENDED
10	FIRE STAIR 1 APPROVED
11	LAUNDRY CRUISE ADDED
12	EXECUTIVE SUITE 2-34 BATHROOM AMENDED
13	FIRE STAIR 1 APPROVED
14	LAUNDRY CRUISE ADDED
15	EXECUTIVE SUITE 2-34 BATHROOM AMENDED
16	FIRE STAIR 1 APPROVED
17	LAUNDRY CRUISE ADDED
18	EXECUTIVE SUITE 2-34 BATHROOM AMENDED
19	FIRE STAIR 1 APPROVED
20	LAUNDRY CRUISE ADDED
21	EXECUTIVE SUITE 2-34 BATHROOM AMENDED
22	FIRE STAIR 1 APPROVED
23	LAUNDRY CRUISE ADDED
24	EXECUTIVE SUITE 2-34 BATHROOM AMENDED
25	FIRE STAIR 1 APPROVED
26	LAUNDRY CRUISE ADDED
27	EXECUTIVE SUITE 2-34 BATHROOM AMENDED
28	FIRE STAIR 1 APPROVED
29	LAUNDRY CRUISE ADDED

(CLASS 3 BUILDING)
 TYPE 1 CONSTRUCTION)

PRINTED
 16 NOV 1990

Sahben
 GROUP OF COMPANIES

THE RITZ-CARLTON
 DOUBLETREE

DESIGN AND CONSTRUCTION BY
TRIDEN TRIDEN CONTRACTING EMPLOYEES
 175 BROADWAY, SUITE 100, SYDNEY, NSW 2000
 (02) 9550 1111

LEFFLER SIMES
 ARCHITECTS

SECOND FLOOR PLAN

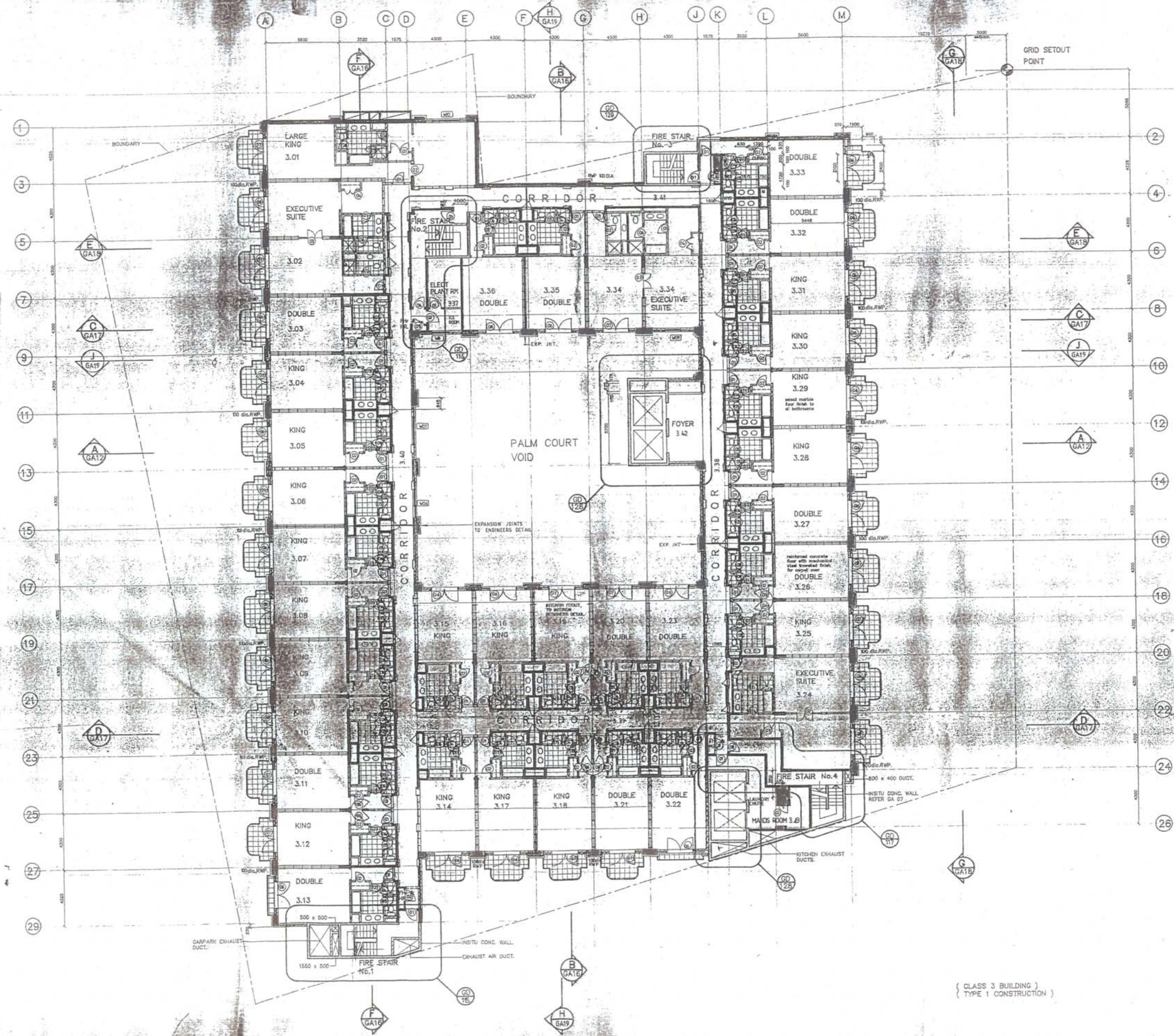
THIS DRAWING AND DESIGN IS MADE TO THE BEST OF OUR KNOWLEDGE AND BELIEF AND IS NOT GUARANTEED. ALL DIMENSIONS TO BE NOTED FROM THE DIMENSIONS OF AN EXISTING STRUCTURE. THE DIMENSIONS SHOWN ON THIS DRAWING ARE THE DIMENSIONS OF THE WORK TO BE CONSTRUCTED.



LEGEND

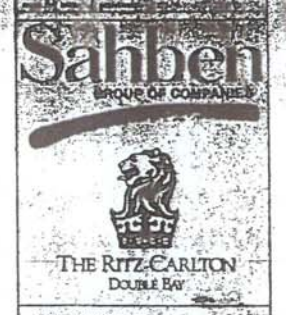
WALL TYPES

- NON-REINFORCED CONCRETE WALL (200mm MINIMUM)
- REINFORCED CONCRETE WALL (200mm MINIMUM)
- CONCRETE BLOCK FIRE RATED WALL (100mm MINIMUM) WITH 100mm MINIMUM CONCRETE BLOCK FILLING AS SPECIFIED ON DRAWING
- REINFORCED CONCRETE BLOCK WALL (100mm MINIMUM)
- STEEL STUD PLASTERBOARD WALL SYSTEM (100mm MINIMUM) WITH 100mm MINIMUM CONCRETE BLOCK FILLING AS SPECIFIED ON DRAWING
- FIRE RATED STEEL STUD PLASTERBOARD WALL SYSTEM (100mm MINIMUM) WITH 100mm MINIMUM CONCRETE BLOCK FILLING AS SPECIFIED ON DRAWING
- FIRE RATED DOUBLE STUD STEEL STUD PLASTERBOARD WALL SYSTEM (100mm MINIMUM) WITH 100mm MINIMUM CONCRETE BLOCK FILLING AS SPECIFIED ON DRAWING



WOOLAHRA MUNICIPAL COUNCIL
 APPROVED 11.4.90
 Public to comply with Part 21 of the Local Government Act (Queensland, and conditions of Approval) contained in the Building Permit.

- 1. FLOOR FINISH: POLISHED CONCRETE
- 2. FLOOR FINISH: POLISHED CONCRETE
- 3. FLOOR FINISH: POLISHED CONCRETE
- 4. FLOOR FINISH: POLISHED CONCRETE
- 5. FLOOR FINISH: POLISHED CONCRETE
- 6. FLOOR FINISH: POLISHED CONCRETE
- 7. FLOOR FINISH: POLISHED CONCRETE
- 8. FLOOR FINISH: POLISHED CONCRETE
- 9. FLOOR FINISH: POLISHED CONCRETE
- 10. FLOOR FINISH: POLISHED CONCRETE
- 11. FLOOR FINISH: POLISHED CONCRETE
- 12. FLOOR FINISH: POLISHED CONCRETE
- 13. FLOOR FINISH: POLISHED CONCRETE
- 14. FLOOR FINISH: POLISHED CONCRETE
- 15. FLOOR FINISH: POLISHED CONCRETE
- 16. FLOOR FINISH: POLISHED CONCRETE
- 17. FLOOR FINISH: POLISHED CONCRETE
- 18. FLOOR FINISH: POLISHED CONCRETE
- 19. FLOOR FINISH: POLISHED CONCRETE
- 20. FLOOR FINISH: POLISHED CONCRETE
- 21. FLOOR FINISH: POLISHED CONCRETE
- 22. FLOOR FINISH: POLISHED CONCRETE
- 23. FLOOR FINISH: POLISHED CONCRETE
- 24. FLOOR FINISH: POLISHED CONCRETE
- 25. FLOOR FINISH: POLISHED CONCRETE
- 26. FLOOR FINISH: POLISHED CONCRETE
- 27. FLOOR FINISH: POLISHED CONCRETE
- 28. FLOOR FINISH: POLISHED CONCRETE
- 29. FLOOR FINISH: POLISHED CONCRETE



DESIGN AND CONSTRUCTION BY
TRIDEN TRIDEN CONTRACTING LIMITED
 117 Miller Street, North Brisbane, QLD
 PHONE: (07) 325 1111 FAX: (07) 325 1111

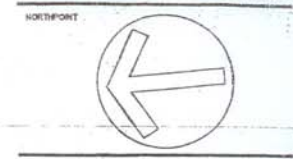
LEFFLER SIMES ARCHITECTS
 7 KING STREET, MELBOURNE, VIC 3000
 (03) 9636 1111

THIRD FLOOR PLAN

303
 18 NOV 1989

(CLASS 3 BUILDING)
 (TYPE 1 CONSTRUCTION)

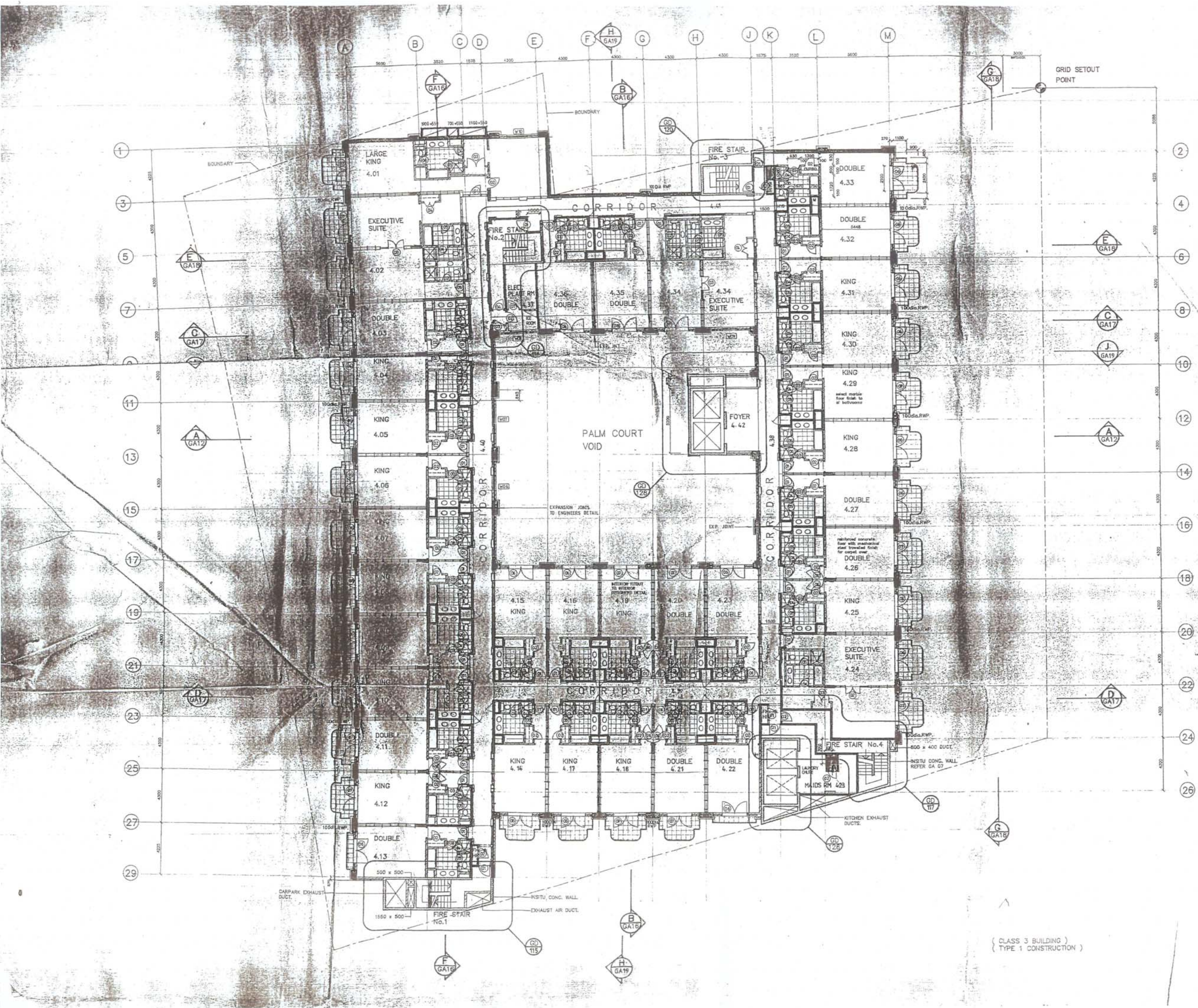
PRINTED
 18 NOV 1989



LEGEND

WALL TYPES

- REINFORCED CONCRETE WALL COLLASPEC/SEKAM
- 150mm REDUCED CORE & SOLID CONCRETE BLOCK FIRE RATED WALL BATHING AS SPECIFIED ON DWG
- 150mm HOLLOW CONCRETE BLOCK WALL
- STEEL STUD PLASTERBOARD WALL SYSTEM STUD SIZE AS SPECIFIED
- FIRE RATED STEEL STUD PLASTERBOARD WALL SYSTEM BATHING AS SPECIFIED ON DWG
- FIRE RATED DOUBLE STUD PLASTERBOARD WALL SYSTEM BATHING AS SPECIFIED ON DWG



WOOLLAHRA MUNICIPAL COUNCIL
 APPROVED 11-4-90
 Subject to compliance with Part XI of the Local Government Act 1989 and relevant Ordinances, and conditions of Approval contained in the Building Permit.
 F.P.S.
 CHIEF BUILDING SURVEYOR

- G 27.8.39 Foyer 4.42 AMENDED ROOM NUMBERS ADDED LAUNDRY QUOTE ADDED EXEC SUITE 4.34 BATHROOM AMENDED
- F 22.8.89 CONCRETE COLUMNS SHOWN BATHROOM & FLOOR PLAN REVISION
- E 25.5.89 INTERNAL BALCONIES AND WINDOW DELETES AND EXHAUST DUCTS ADDED EXPANSION JOINTS LOCATION
- D 11.8.89 AMEND WALLS TO FIRE STAIRS AND LEFT CORNER TO MATCH EXISTING
- C 14.5.89 ROOM LAYOUT AMENDED EXPANSION JOINT LOCATION
- B 22.1.89 RELOCATE FIRE STAIR NO. 4 FIRE ADDED BALCONIES ALTERED
- A 13.12.88 CORNER FOR G.A. STAIRS

Sahben
 GROUP OF COMPANIES

THE RITZ-CARLTON
 DOUBLE BAY

DESIGN AND CONSTRUCTION BY
TRIDEN TRIDEN CONSTRUCTION LIMITED
 117 Collins Street, South Melbourne VIC 3207
 PHONE: 03 9511 1111 FAX: 03 9511 1112

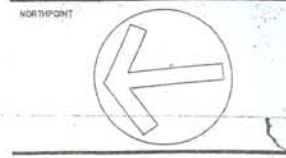
LEFFLER SIMES ARCHITECTS
 7 YOUNG STREET, MOUNTAIN VIEW, VIC 3049
 PHONE: 03 9481 1111 FAX: 03 9481 1112

FOURTH FLOOR PLAN

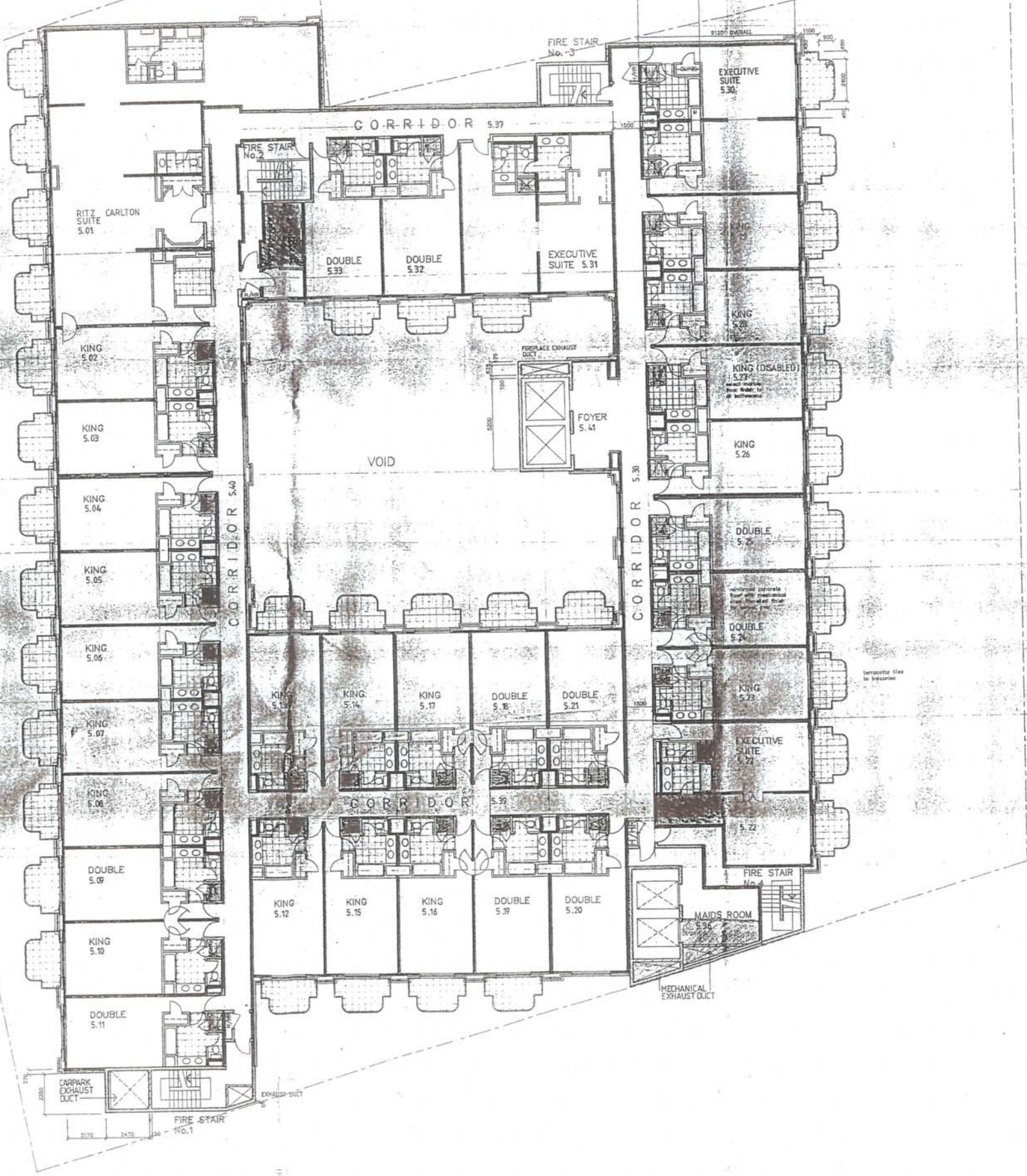
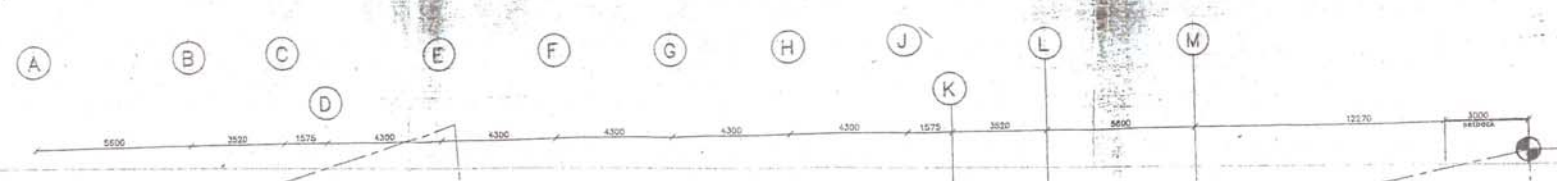
(CLASS 3 BUILDING)
 (TYPE 1 CONSTRUCTION)

PRINTED
 16 NOV 1989

THIS DRAWING AND DESIGN IS SUBJECT TO COPYRIGHT AND MAY NOT BE REPRODUCED WITHOUT WRITTEN CONSENT. ALL DIMENSIONS TO BE REFERRED FROM TO COMMENCEMENT OF ANY WORK. ANY DISCREPANCIES TO BE REFERENCED TO ARCHITECT. USE FIGURED DIMENSIONS ONLY.



VICTORIAN ARCHITECTURAL COUNCIL
 APPROVED 2.10.83
 P.W.



PRINTED
 25 SEP 1983

23-5-83 REDRAWN

Sahber
 GROUP OF COMPANIES

THE RITZ-CARLTON
 DOUBLE BAY

K. B. HUTCHERSON PTY. LTD.
 35 SPYING STREET DOUBLE BAY NEW SOUTH WALES
 TELEPHONE: 622 38 80 FAX: 622 87 80
 HEAD OFFICE: TELEPHONE: 542 48 8777 TELEFAX: 542 48 8777

LEFFLER SIMES
 ARCHITECTS

7 YOUNG STREET MELBOURNE VIC 3000 AUSTRALIA
 SYDNEY: 142 82 1244 MELB: 422 99 282

FIFTH FLOOR PLAN