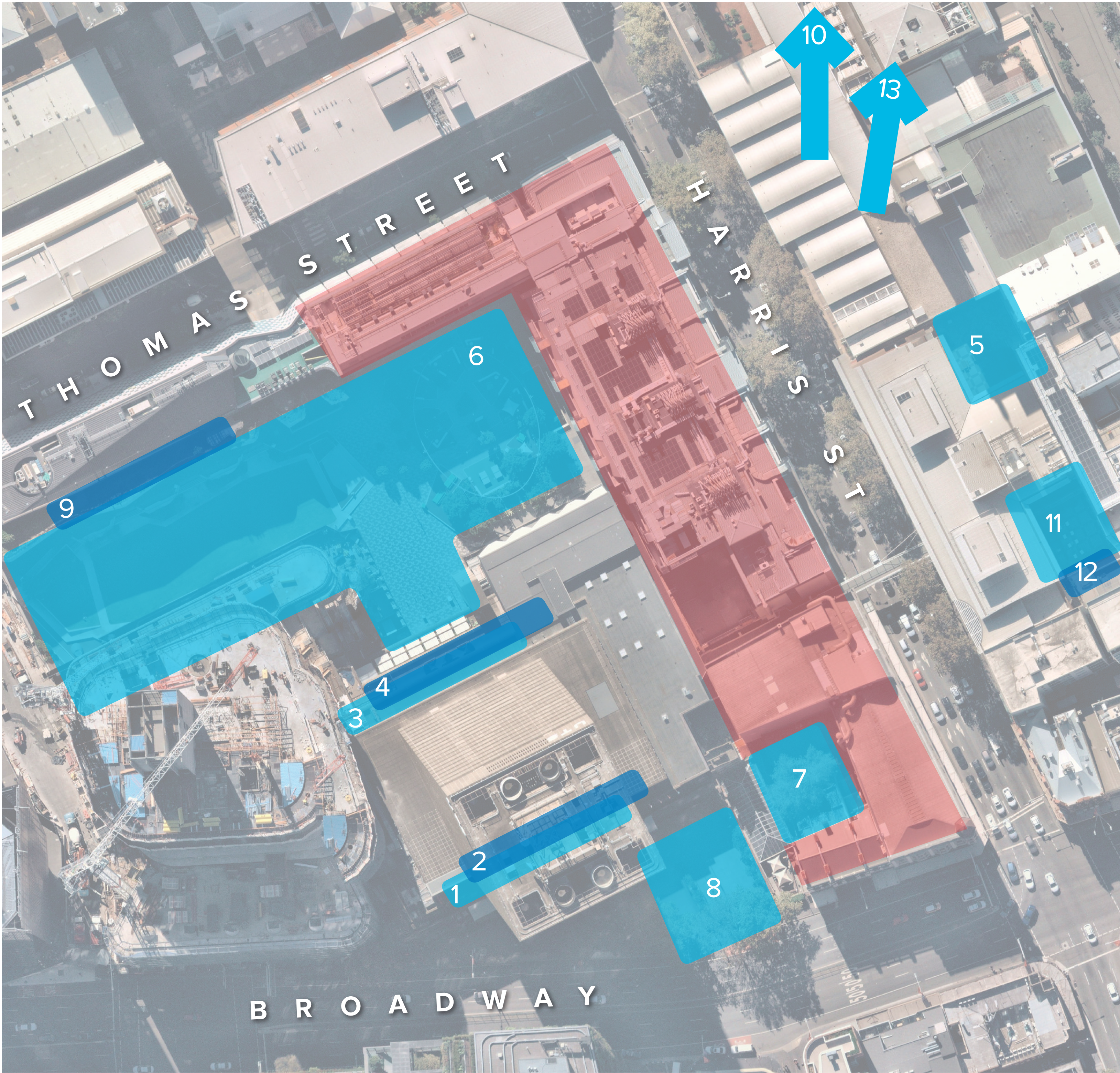


2.6_SITE UNDERSTANDING_EXISTING OPEN SPACE



AVAILABLE SPACES FOR STAFF AND STUDENTS

1

Building 1 Podium, restricted access, little amenity, shaded, small.

3

Building 1, afternoon sun, small planters, some furniture, easily accessible and popular to use, sheltered.

2

Building 1 Podium, restricted access, little amenity.

4

Building 1, afternoon sun, small planters, small fixtures/furniture, easily accessible, quiet atmosphere, no shelter.

5

Level 4, afternoon sun, small planters, lots of furniture, easily accessible and very popular to use, little shelter.

6

Alumni Green offers more diverse spatial opportunities for students, staff, and members of the public.

7

The Loft (University Bar), confined unsheltered space in building shadow most of the day.

8

Entrance to Building 1 (UTS Tower) off Broadway, vast space often used for larger gatherings (protests etc.), windy and noisy.

9

Building 7, accessible to staff only, sunny position, vegetated and comfortable.

Image from UTS

10

Goodsline by the Powerhouse museum and Chau Chak Wing Building. Popularly activated by both students, staff and the public.

Image from ASPECT Studios

11

Universal Cafe, level 4, connected to main arterial path of egress from goodsline to building 3 and 4.

12

Level 5 courtyard space, heavily shaded, connected to DAB studios and Staff Offices.

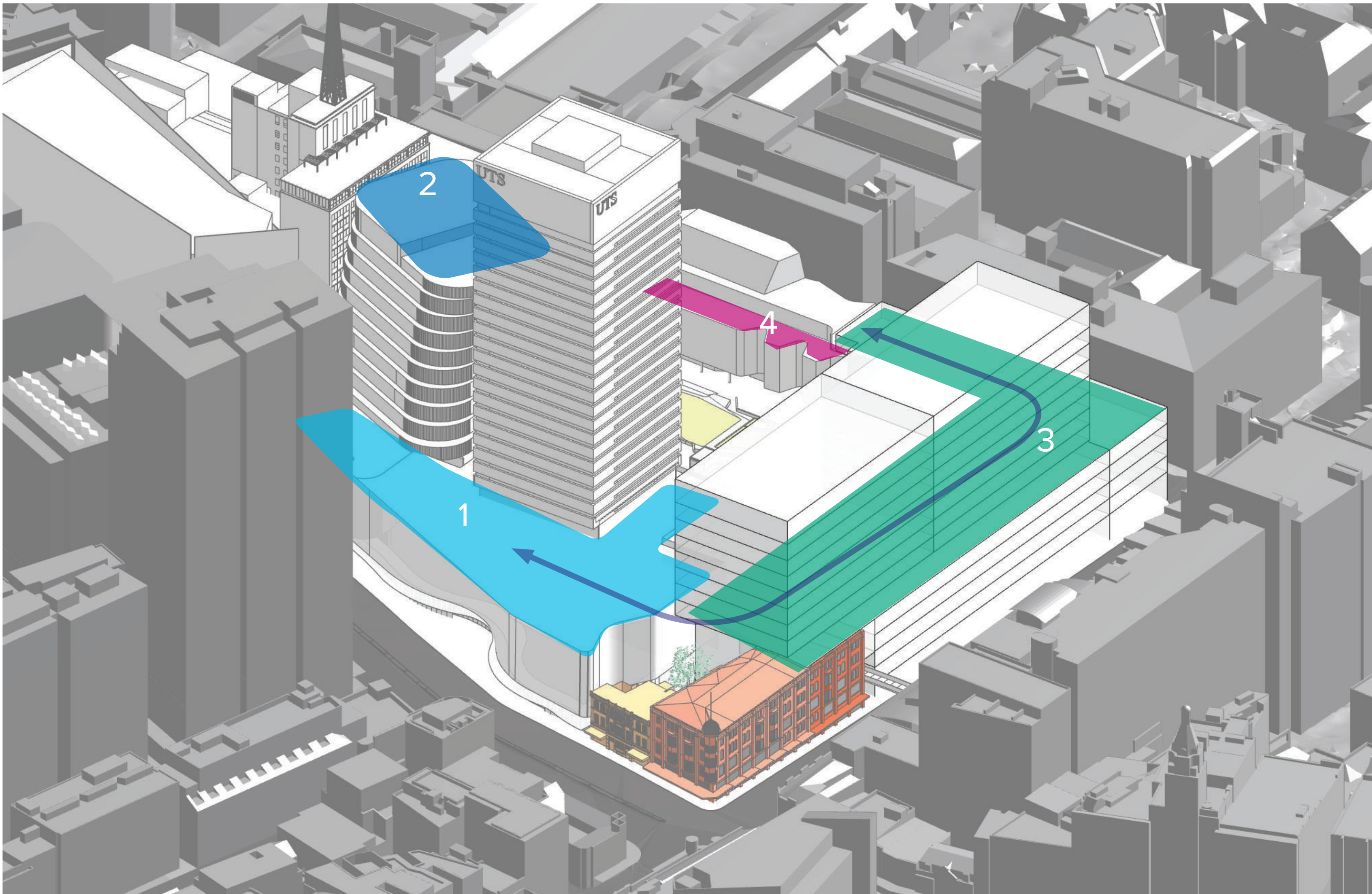
Image from Whiteout by Office Feuerman

13

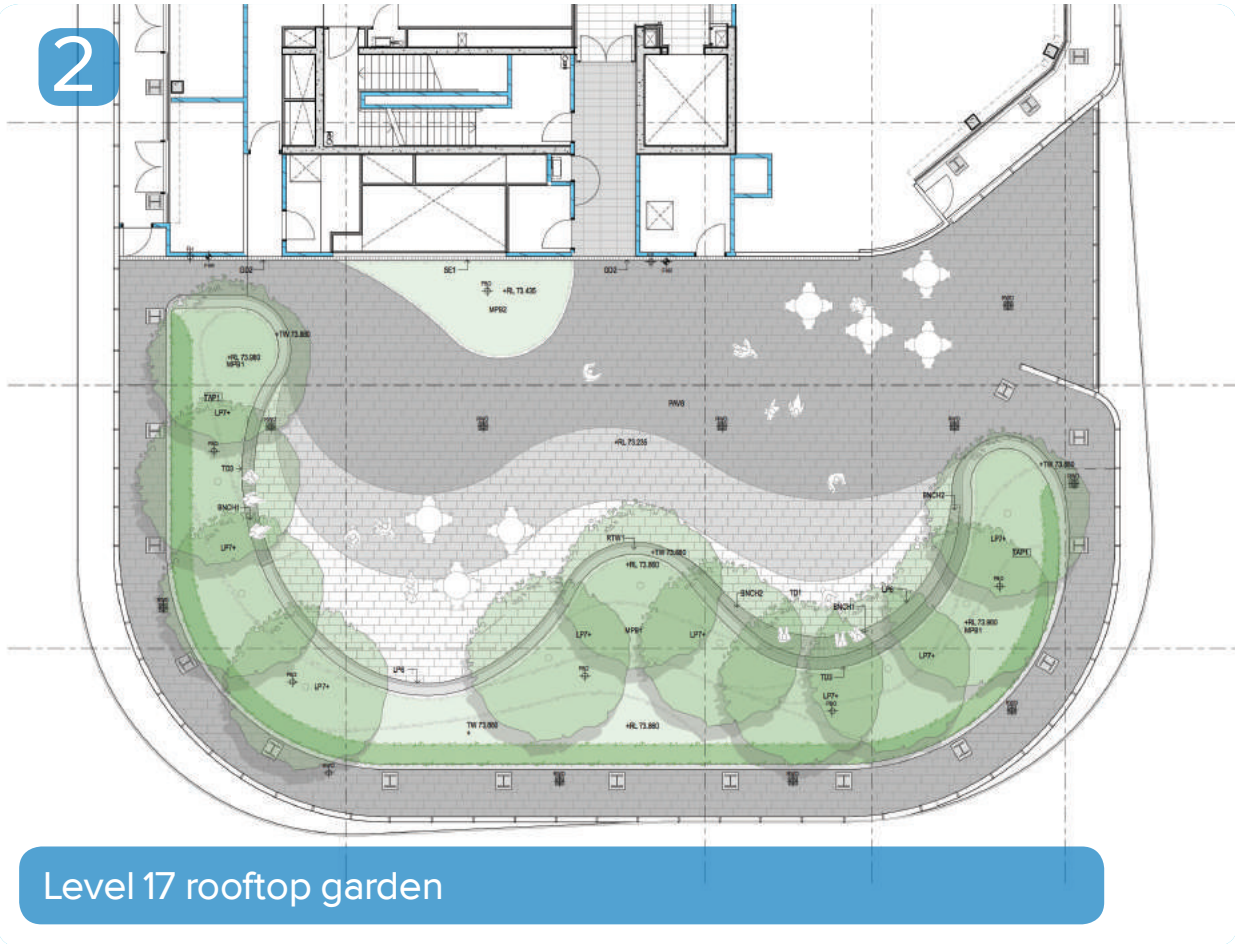
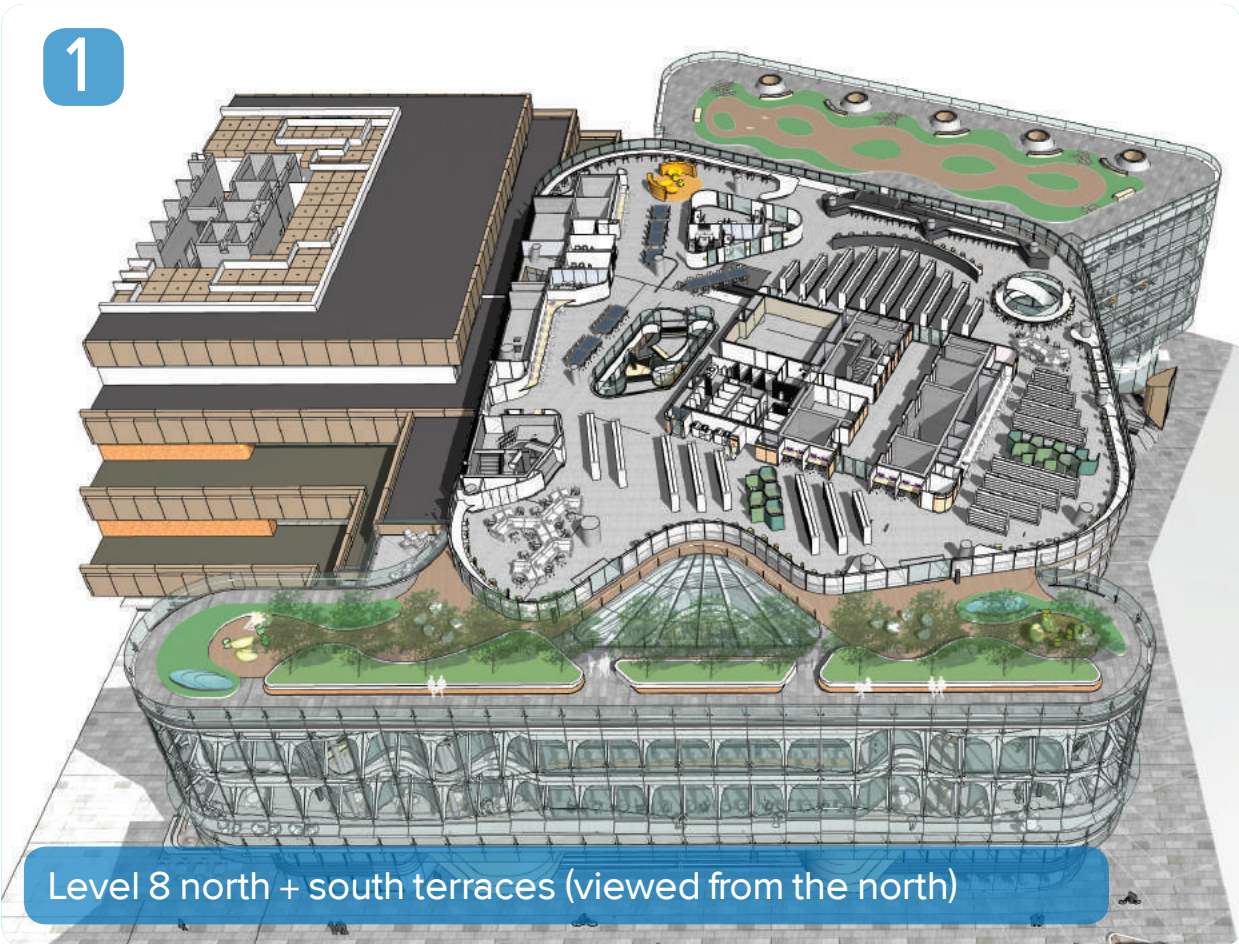
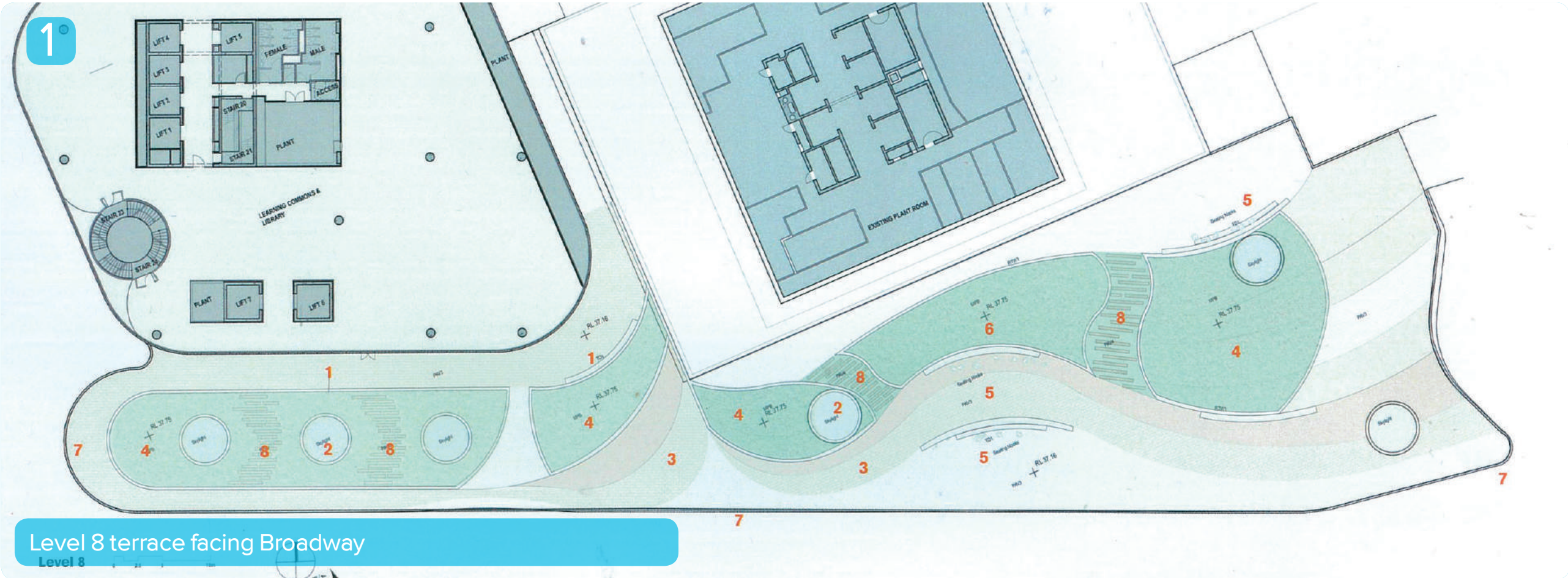
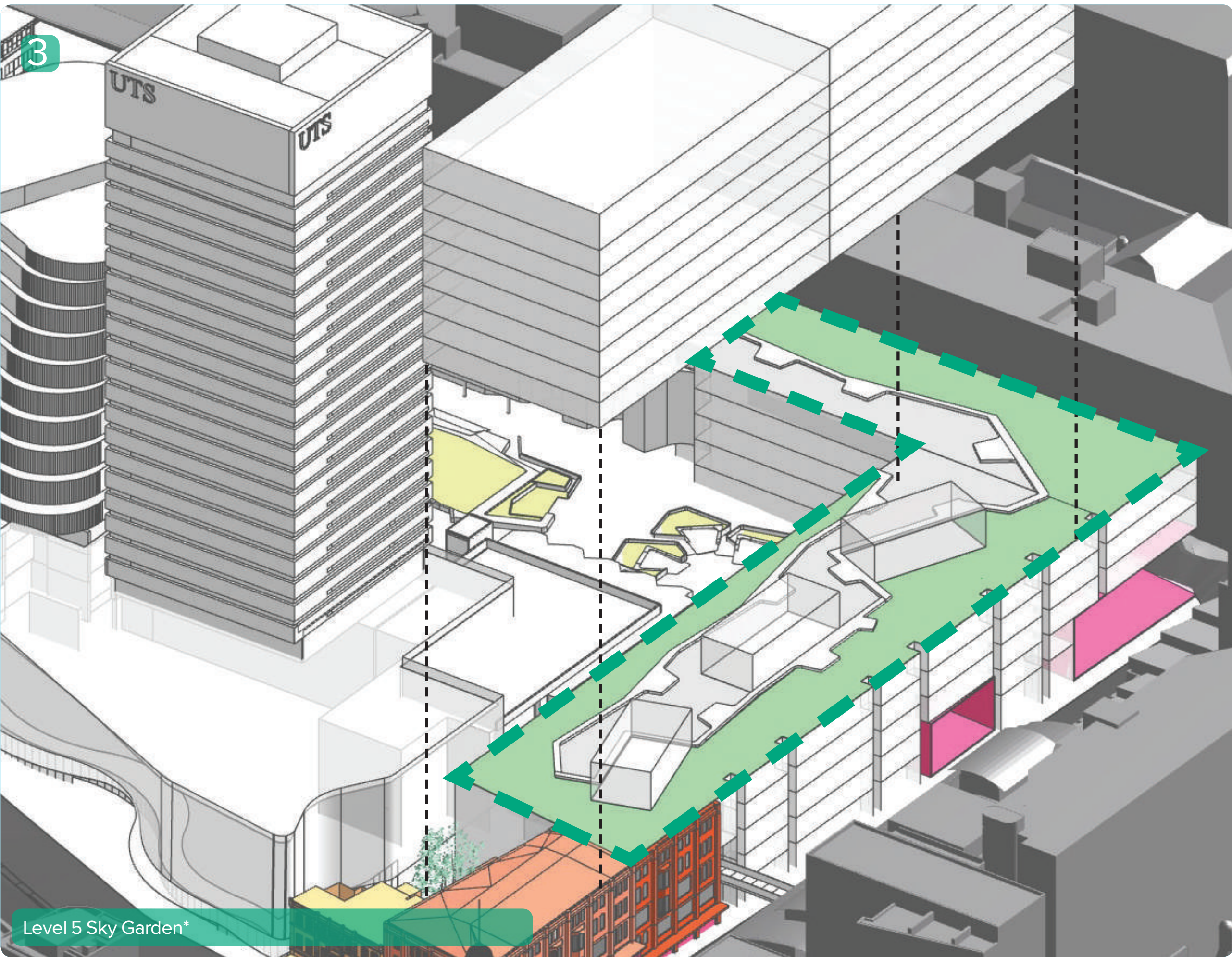
Building 5 ground floor courtyard. Gets some sun, popular with students.

Image from 4fold

2.7_SITE UNDERSTANDING_PROPOSED OPEN SPACE



FUTURE CONNECTIONS AND OPENS PACES FOR STAFF AND STUDENTS



*Indicative