

ETHOS URBAN

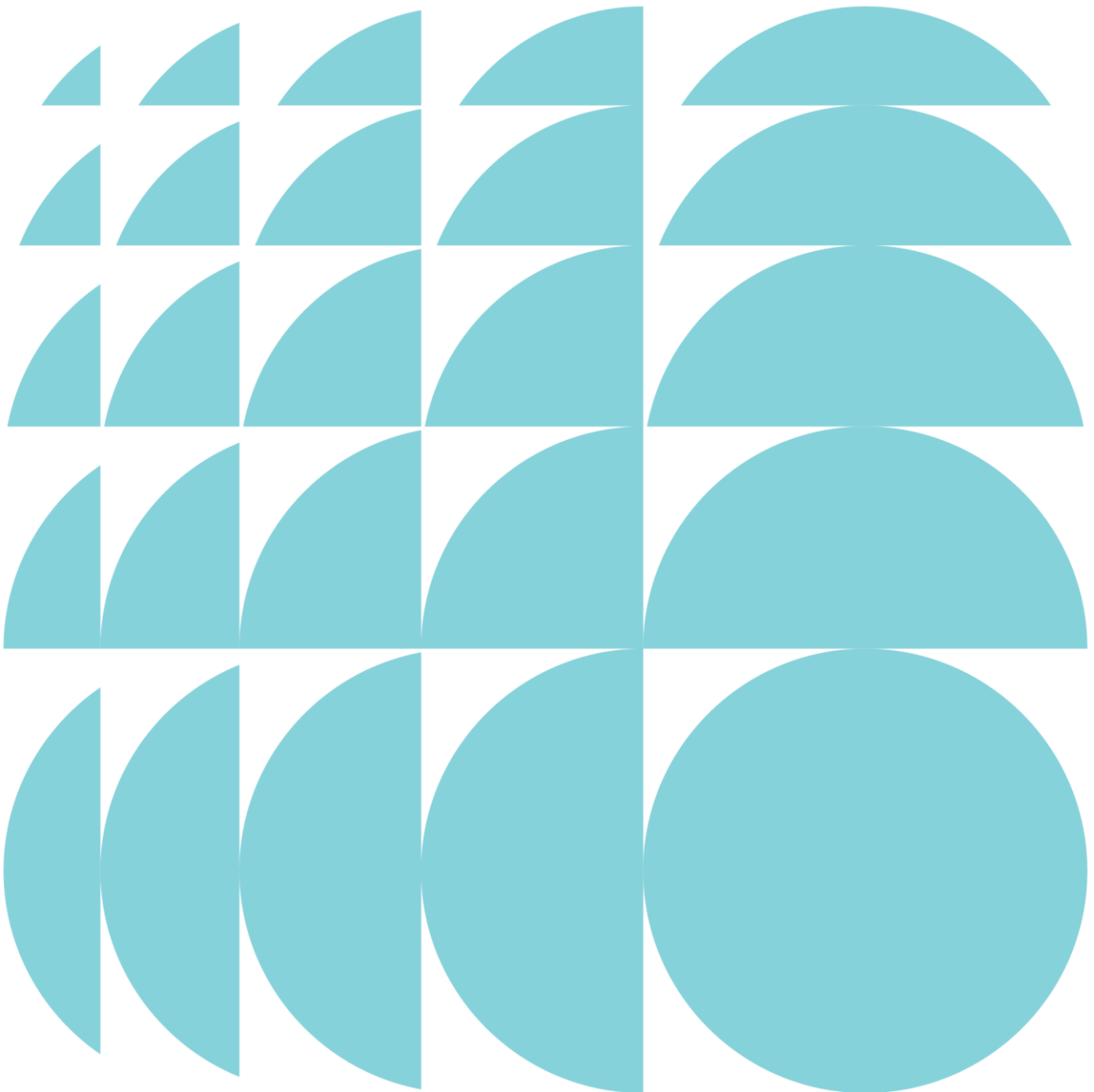
Design Excellence Competition Strategy

Section 75W to Concept Plan (MP08_0116)

Bon Marche and Science Precinct Redevelopment
UTS City Campus, Broadway Precinct

Submitted to Department of Planning and Environment
On behalf of the University of Technology Sydney

31 August 2018 | 218424



1.0	Introduction	2
1.1	Overview	2
1.2	Objectives of the Design Excellence Strategy	2
2.0	Background and Context	3
2.1	Concept Plan	5
2.2	State Design Review Panel	5
3.0	Design Excellence Strategy	6
3.1	Extent and location of the competitive design process	6
3.2	Type of competitive process	8
3.3	Selection of Competitors	8
3.4	Establishment of competition Jury	8
3.5	Competitive process brief	8
3.6	Design Integrity	8

1.0 Introduction

1.1 Overview

This Design Excellence Strategy has been prepared by University of Technology Sydney (UTS) to support a Section 75W Application to modify Concept Plan Approval MP08_0116 relating to the proposed redevelopment of the Bon Marche and Science Precinct at the UTS City Campus, Broadway Precinct.

This Strategy has been prepared having regard to both the NSW Office of Government Architects (OGA) Design Excellence Guidelines (Draft, May 2018) and City of Sydney Competitive Design Policy 2012 (Policy). The Strategy has also been prepared in accordance with the SEARs requirements issued for the Section 75W Application. Given the City of Sydney Council has its own Design Excellence policy and requirements, this will take precedent over the OGA guidelines, beyond the Concept Plan modification approval. It is noted that the Concept Plan modification application that relates to establishing the building envelopes, key development parameters and design principles are currently subject to the State Design Review Panel process.

The complexities around the existing site being part of a functioning university, consideration of decanting and staging etc, mean that it is premature to identify the exact approach to the achievement of design excellence across the Bon Marche and Science Precinct. There may very well be a single design competition or potentially multiple competitions – depending on the final configuration and delivery program of the project. Regardless, UTS is committed to undertaking a competitive design process/es for the delivery of this next stage of development at the Broadway Precinct.

1.2 Objectives of the Design Excellence Strategy

The objectives of this strategy are to:

- Establish a methodology for the proponent to implement a competitive design process/es for the redevelopment of the subject site, in accordance with the Policy;
- Confirm the number of architectural practices to participate in the competitive process/es and how these will be selected;
- Establish the process/es for the selection of a competition jury;
- Set out the approach for establishing a competition brief/s that ensures:
 - The Consent Authority's design excellence requirements are balanced with the Proponent's objectives,
 - The achievement of design and architectural diversity,
 - Procedural fairness for competitors.
- Ensure that design excellence integrity is continued in the subsequent detailed development proposal through construction phase to completion of the project.

2.0 Background and Context

The achievement of design excellence across the Broadway Precinct (and Haymarket Precinct) has been an important theme since the master planning process first started back in the 2000s, and is clearly linked to the long term strategic vision for UTS is 'to be one of the world's leading Universities of Technology'.

UTS is committed to design excellence for new development in the Concept Plan. A mix of techniques have been utilised to achieve design excellence to date.

Design competitions have been undertaken to deliver:

- Faculty of Engineering and IT Building (refer to **Figure 1**);
- The Faculty of Science and Graduate School of Health Building (refer to **Figure 2**);
- The Great Hall and Balcony Room Upgrade;
- Alumni Green (refer to **Figure 3**); and
- Building 1 and Building 2 podium extension (Phase 1 under construction) (refer to **Figure 4**).

UTS has a proven track record and is at the forefront of delivering the highest standard of architecture, urban design and landscaping.

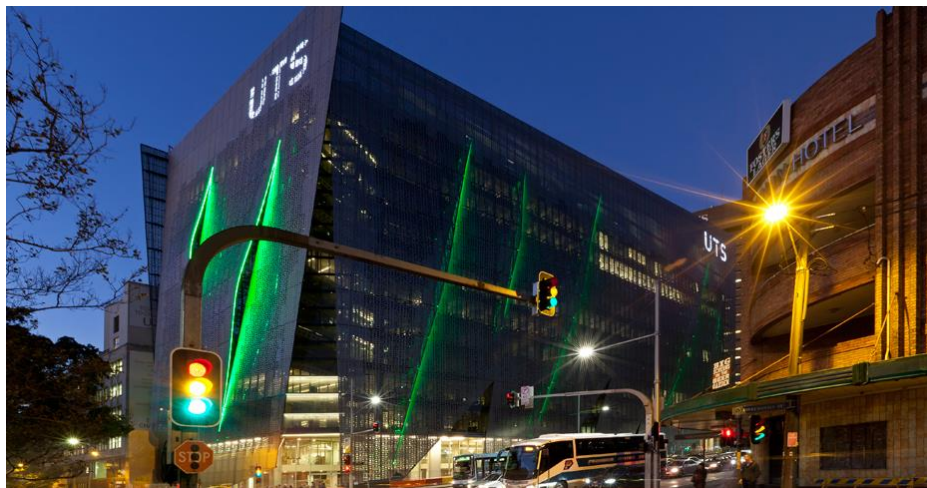


Figure 1 – Faculty of Engineering and IT Building



Figure 2 – Alumni Green



Figure 3 – Faculty of Science and Graduate School of Health Building



Figure 4 – Lacoste + Stevenson winning design competition entry for Building 1 and Building 2 podium

2.1 Concept Plan

The UTS City Campus Broadway Precinct Concept Plan (BPCP) was approved by the then Minister for Planning on 23 December 2009 (MP08_0116). The Concept Plan initially included:

- New Broadway Building and Thomas Street Building with a combined gross floor area (GFA) of 44,650m²;
- Expansion of Buildings 1 and 2 with a combined additional GFA of 10,800m²;
- Expansion of Building 6 for the provisions of student housing with an additional 25,250m² GFA;
- Modifications to Buildings 3, 4 and 10;
- Modifications to Alumni Green with a new Multi Purpose Sports Hall and book vault beneath; and
- Public domain improvements to Broadway and Thomas, Harris, Wattle and Jones Streets.

The Minister also granted Project Approval for the following works:

- Construction of a new underground Multi Purpose Sports Hall; and
- Demolition of Buildings 11, 12 and 13.

The Concept Plan has been modified 5 times to date, with the Bon Marche and Science Precinct redevelopment being progressed through modification No. 6 to the Concept Plan.

Importantly, the Concept Plan approval (as modified) establishes the planning and development framework to guide future development on the site and articulates the University's objectives and goals. This includes a suite of urban design principles and design quality controls to inform and guide the detailed design stage, including informing the design competition briefs for the relevant stages. These principles and design quality controls are being further refined and revised as part of the modification application, and which will inform the future design competition brief.

2.2 State Design Review Panel

To inform the modification application and ensure the future attainment of design excellence, UTS elected to participate in the recently established State Design Review Panel process.

The panel members selected for the project were: Richard Johnson, Michael Tawa, Matt Davis, Garth Paterson, and Lee Hillam (Chair – GANSW). The first presentation was provided to the Panel by UTS and its project team on 25 July 2018, where valuable feedback was provided and has been considered/adopted as part of the formal modification application. In general, the panel supports the preliminary proposal to redevelop the subject portion of the UTS Broadway Campus.

3.0 Design Excellence Strategy

Following any approval of the Section 75W Application, a single stage invited competitive design process / multiple invited competitive design processes is proposed to be undertaken.

3.1 Extent and location of the competitive design process

The Broadway Precinct of the UTS City Campus is located on the southern edge of the Sydney Central Business District (CBD). The UTS City Campus is located entirely within the Sydney Local Government Area.

The Campus has frontages to Broadway, Thomas, Wattle and Harris Streets, and the Goods Line and is less than 700 metres from Central Railway Station. Jones Street runs through the Precinct. The area covered by the Concept Plan (MP 08_0116) is shown in **Figure 5**. More specifically, the Bon Marche and Science Precinct is located within the eastern part of the Broadway campus between Thomas Street and Broadway with frontage to Harris Street. It incorporates Buildings 3, 4, 9 and 18, with all these buildings located within the broader Lot 2012 DP1183894. Refer to **Figure 6** and **Figure 7** for the location of the Bon Marche and Science Precinct.

The Competition/s are expected to only apply to that part of the Bon Marche and Science Precinct subject to significant redevelopment (i.e. as part of the demolition of Building 4/Building 3). In accordance with Clause 6.21 of Sydney LEP 2012, this would for example exclude alterations or additions (e.g. such as any proposal relating to modifications and/or refurbishment of heritage listed Bon Marche, The Terraces and/or Loft with associated improved pedestrians connections through these buildings from Harris Street and Broadway).

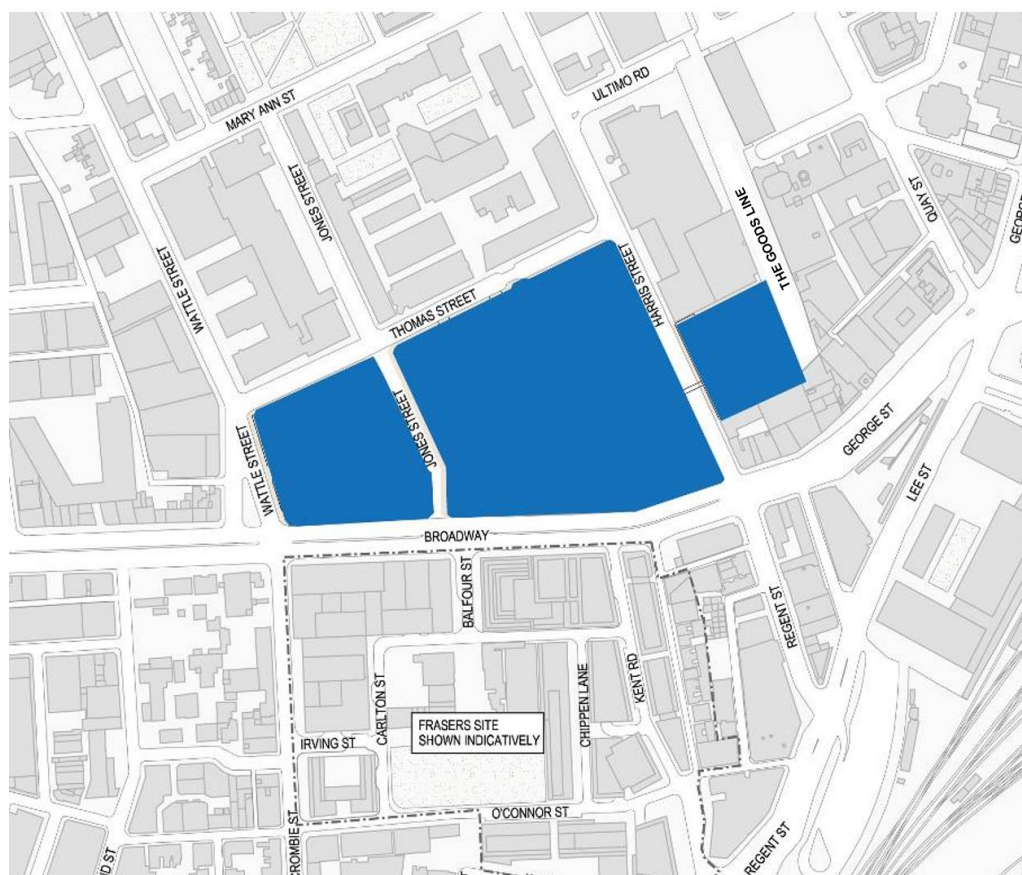


Figure 5 – Site Context

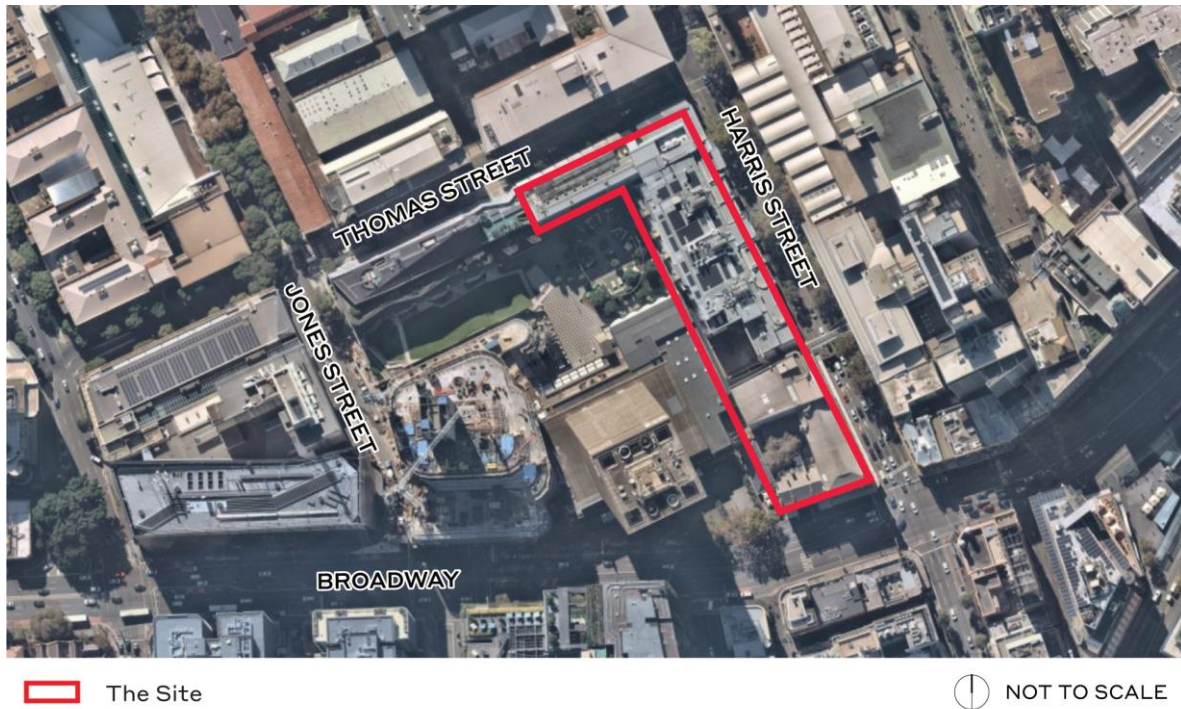


Figure 6 – Aerial image of Bon Marche and Science Precinct

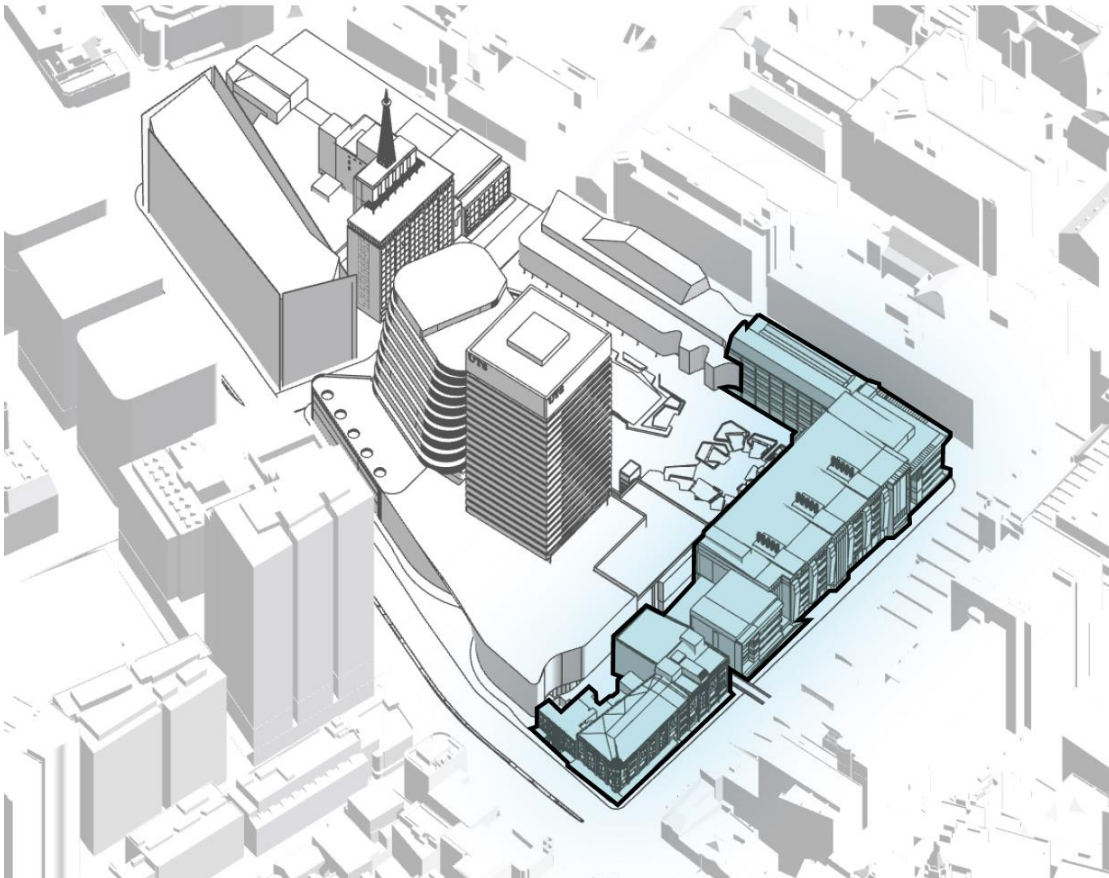


Figure 7 – 3D perspective of the existing Bon Marche and Science Precinct

3.2 Type of competitive process

The type of competitive process selected by the proponent is an invited architectural design competition/s for the project. The process is to be undertaken prior to the lodgement of any subsequent Development Application for significant development. The architectural design competition will be conducted generally in accordance with the Policy and Competitive Design Model Brief.

3.3 Selection of Competitors

The selection of invited competitors for the competition/s will be determined by the proponent, undertaken in consultation with the City of Sydney, as follows:

- A Competitor may be a single person or firm, or a number of firms working in partnership, constituted of a principal/lead architect supported by an executive architect(s).
- Competitors may be a range of emerged and established local, interstate or international architects or firms.
- Where a Competitor includes an international firm, this must be in partnership with a local firm.
- A Competitor will either be a person, corporation or firm registered as an architect in accordance with the *NSW Architects Act 2003*, or, in the case of interstate or overseas competitors, eligible for registration with their equivalent association.

3.4 Establishment of competition Jury

The competition jury is to comprise a total of six (6) jury members. The jury will be appointed by the proponent and is comprised of:

- Half the members nominated by the City of Sydney Council, who have no pecuniary interests in the development proposal or involvement in approval processes; and
- Half the members nominated by the proponent.
- Jury members are to:
 - Represent the public interest;
 - Be appropriate to the type of development proposed;
- Include only persons who have expertise and experience in the, design and construction professions and industry; and
- Include a majority of registered architects with urban design expertise.

The chairperson of the jury will have expertise in architectural design and be a recognised advocate of design excellence.

3.5 Competitive process brief

The competition brief (the brief) will be prepared by the proponent who will liaise with the City of Sydney prior to commencement of the competitive process.

The competition brief will ensure that the consent authority's design excellence requirements are balanced with the proponent's objectives, the process will promote design excellence and architectural diversity, and that procedural fairness for competitors is achieved.

3.6 Design Integrity

The architectural firm(s) of the winning scheme, (as chosen via the 'competitive design process'), is to be appointed as the Design Architect for the project and will prepare a Development Application for the preferred design. Following securing any DA approval, the Design Architect may work in association with or support other architectural practices but is to retain a leadership role over design decisions. The Design Architect is to have a role until the completion of the project.