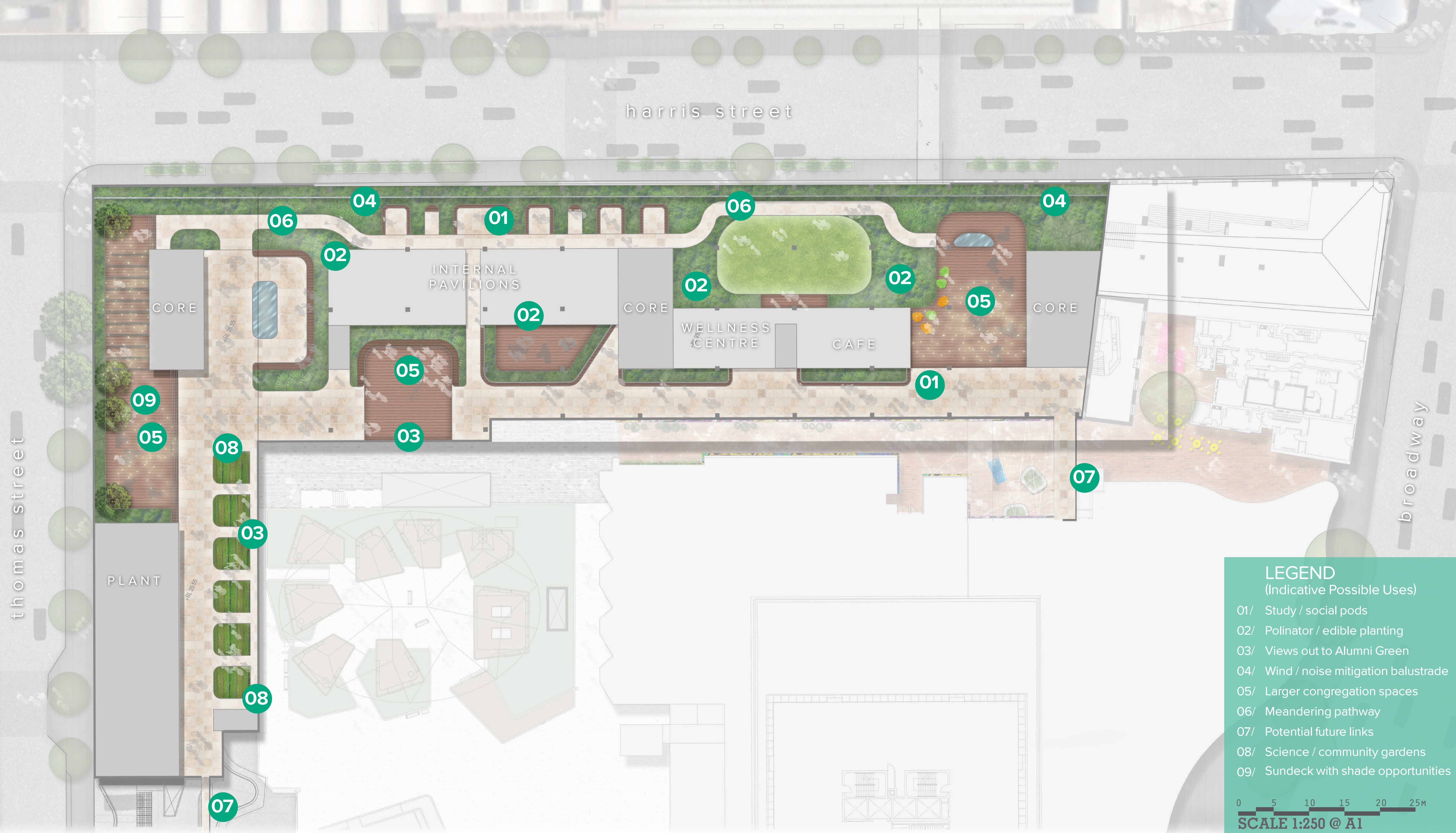


4.4 DESIGN OUTCOMES_INDICATIVE LANDSCAPE DESIGN: SKY GARDEN



4.5_DESIGN OUTCOMES_INDICATIVE LANDSCAPE DESIGN: SKY GARDEN



// SPACES FOR SOCIAL AND STUDY

Providing a range of scales of social and study opportunities for staff and students, seated amongst lush planting as well as larger spillout zones used for events, classes, and more. Giving users an opportunity for different experiences through the skygarden, a meandering pathway linking nooks nested amongst planting, and a more direct route linking the spillout spaces and the core structures.



- // STUDY AND SOCIAL NOOKS
- // MIXED ENDEMIC AND NATIVE PLANTING
- // OPPORTUNITIES TO GATHER FOR EVENTS OR CLASSES



// STUDENT AND STAFF ENGAGEMENT

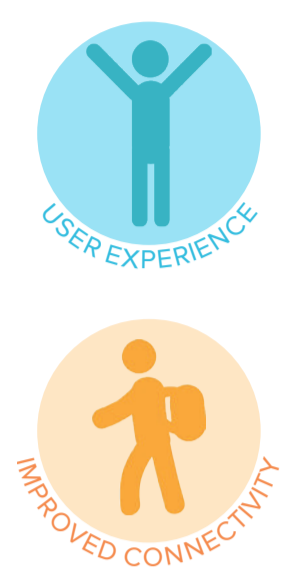
Incorporating native edible and pollinating plants for public engagement. Using native species to educate and help people reconnect to the land. Introducing opportunities to be engaged with the landscape such as vegetable gardens. Creating nooks and places of respite so they are enclosed by planting, providing moments of privacy and definition without resorting to methods of absolute definition, keeping spaces flexible for change of use in the future. Opportunities for integration of indigenous stories and interpretation as a landscape character element.



- // VEGETABLE GARDENS AND OTHER ECO-ENGAGEMENT ACTIVITIES
- // HAVING POINTS OF ACTIVITY EASILY ACCESSIBLE
- // INTERWOVEN INDIGENOUS STORIES



4.6_DESIGN OUTCOMES_INDICATIVE LANDSCAPE DESIGN: SKY GARDEN



// CONNECTING TO CAMPUS

Providing physical connections as well as visual connections through the campus across multiple buildings. Potential sky garden connection to building 7 staff gardens to be explored. Possible pedestrian linkage at the south end to adjacent building 1 level podium, or to podium roof space via stairs.



// VIEWS TOWARDS ALUMNI GREEN
// CONNECTING TO EXISTING AND FUTURE CAMPUS BUILDINGS

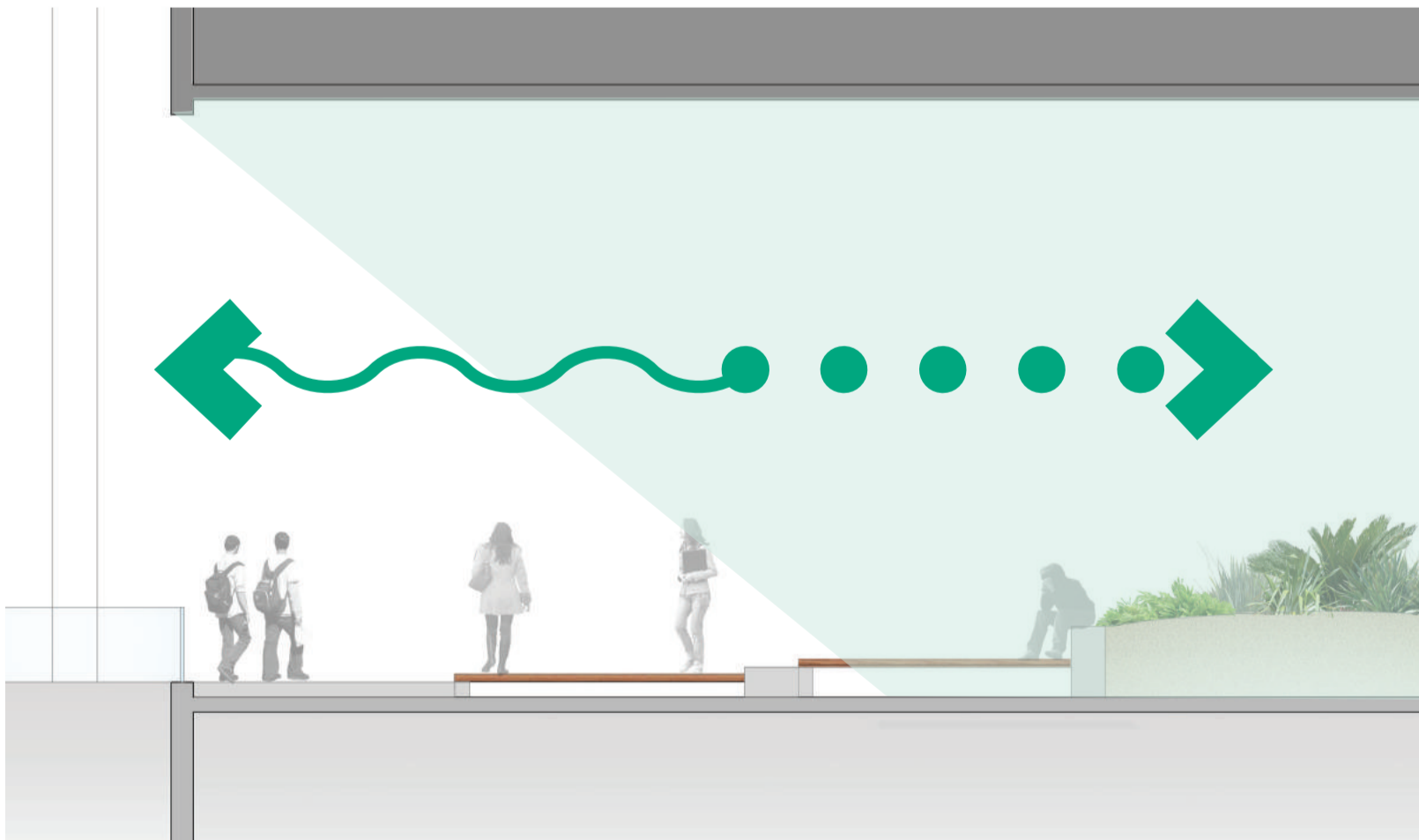


// WORKING WITH MICROCLIMATES

Working with the microclimate to accomodate shade loving plants that not only soften the hardscape of the design but enclose spaces. Potential integration of a selection of native edible and polinating plants. Overall connecting to the Sydney Green Grid.



// VEGETABLE GARDENS AND OTHER ECO-ENGAGEMENT ACTIVITIES
// HAVING POINTS OF ACITIVITY EASILY ACCESSIBLE



4.7_DESIGN OUTCOMES_INDICATIVE PLANTING EXPERIENCES

01

STREETSCAPE



Juncus sp.



Scaecola sp.



Westringia fruticosa 'Mundi'



Themeda australis 'Mingo'



Lomandra longifolia



Banksia Birthday Candles

02

MOSTLY SUNNY



Correa 'Isabell'



Leucophyta brownii



Crowea exalata



Pultenaea pedunculata



Dianella caerulea 'Little Jess'



Melaleuca thymifolia

03

MOSTLY SHADEY



Heliochrysum petiolare



Philodendron 'Little Phil'



Dichondra sp.



Dianella caerulea 'Little Jess'



Blechnum nudum



Cordyline terminalis

04

GREENWALL

