



Environmental & Heritage Management

24th November 2008

Department of Planning,
23-33 Bridge St
SYDNEY NSW 2000

Re: Indigenous heritage assessment and the Section 75(w) approval modification for the Gateway Enterprise Park, Bathurst

Introduction

This letter was commissioned by Crawford Architects on behalf of Gateway Land Corporation. It details adaptation of the Indigenous heritage assessment results generated for the initial project – Central West Regional Road/Rail Freight Terminal, located in the Kelso area of Bathurst – to the modified project, being the Gateway Enterprise Park.

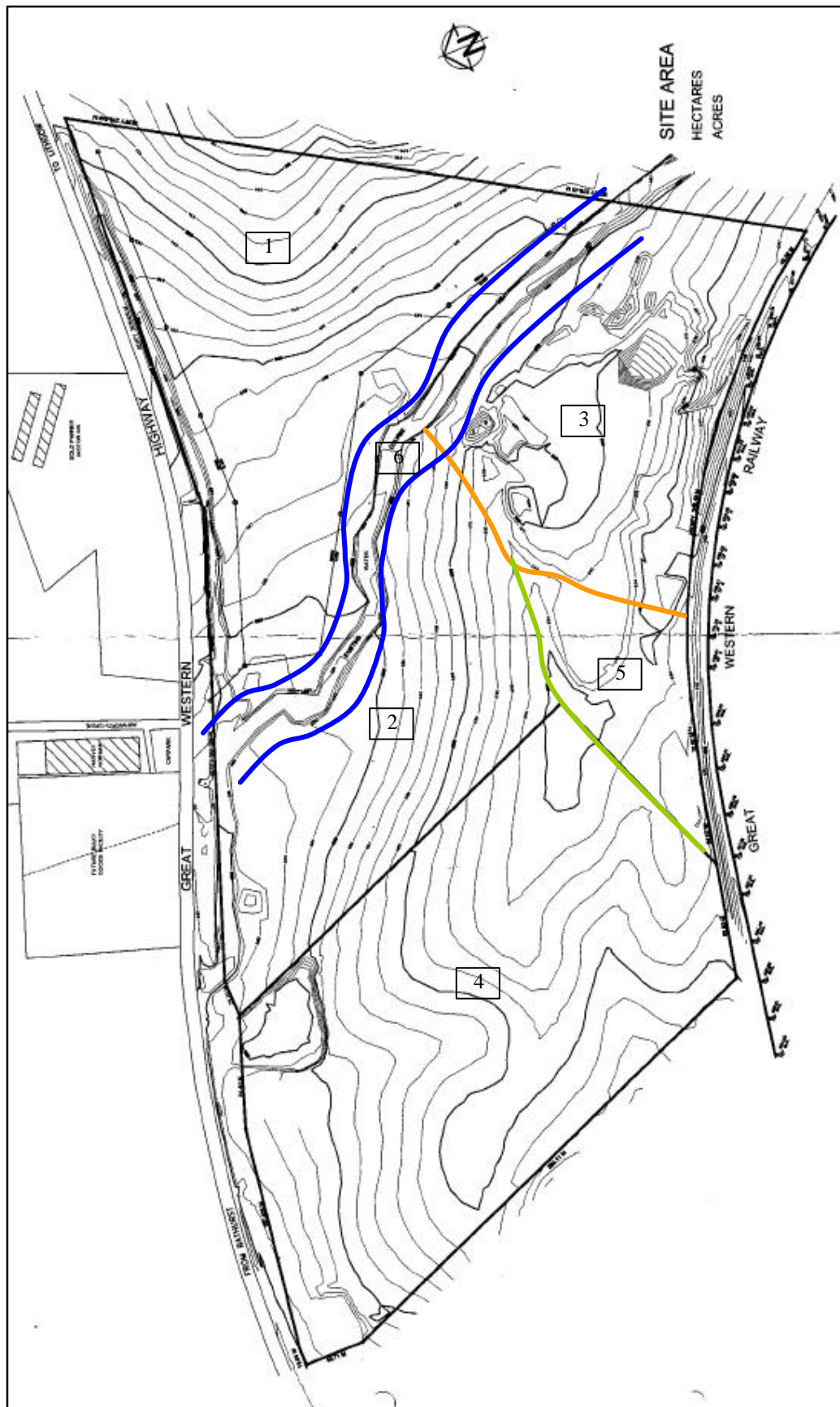
Background

In 2005, OzArk Environmental and Heritage Management (OzArk) undertook Indigenous heritage assessment over a c. 30 hectare parcel of land proposed for development into the Central West Regional/Road Freight Terminal. At this time, the entire area depicted in Figure 1 was assessed by the OzArk team in company with a representative of the Bathurst Local Aboriginal Land Council (BLALC). It is noteworthy that Indigenous community consultation for this project was undertaken with reference to the Interim Community Consultation Requirements for Applicants (ICCR's), but that only the BLALC responded to the Expression of Interest for the project.

Results of the assessment documented two primary landform units as present – being the undulating slopes and the riparian creek corridor, both of which are extensively disturbed and significantly altered as a result of European practices. Relatively high levels of disturbance (including significant quarrying) were in fact recorded over most of the study area (OzArk 2005: 7) and overall ground surface visibility was assessed as low-moderate, averaging 15.2%.

No Indigenous sites were recorded as a result of the assessment and it was concluded that the high levels of disturbance resulted in a low likelihood for intact, sub-surface archaeological deposits to remain present and undetected.

Figure 1: Detailed map showing the study area and the numbering system of the surveyed areas
 (Source: Mellor Gray Architects P/L).



Application of previous results to the current development modification

Since finalisation of the 2005 Indigenous heritage assessment report, alterations have been made to the previously approved (under Part 3A) concept of the Central West Regional Road/Rail Freight Terminal project, such that it has become modified project, being the Gateway Enterprise Park (Concept Plan MA-002). This modification has engendered the need for the environment assessment reports generated for the initial project scope to be revised in light of possibly altered project impacts.

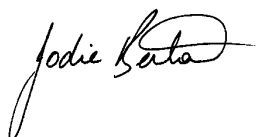
In the case of Indigenous heritage, the revised project impacts remain physically within the area assessed during the 2005 survey, see Figure 1. As all impacts remain within the area that was originally assessed, it is considered that there is no need for additional Indigenous heritage assessment to be completed. As no sites were recorded and nor was there considered to be potential for intact, undetected archaeological deposits, it is considered that the results of the 2005 assessment remain an accurate reflection of the Indigenous heritage resource within the study area.

The recommendations of the OzArk 2005 report (OzArk 2005: 12) therefore remain appropriate for the new Gateway Enterprise Park:

1. No Aboriginal sites were recorded as a result of the survey of the current study area and the potential for intact, undetected, sub-surface deposits is considered low. As a result no further archaeological assessment is required and there are no constraints to the proposed freight terminal on the grounds of cultural heritage;
2. Should any 'relics' or other Aboriginal sites be identified anywhere in the study area during the course of construction, work in that area should cease and the DECC Western Region Office and the Bathurst LALC be contacted to discuss how to proceed.

Should you have any further questions or issues regarding this letter, please do not hesitate to call on the numbers provided

Yours faithfully



Dr Jodie Benton
Director - OzArk EHM P/L