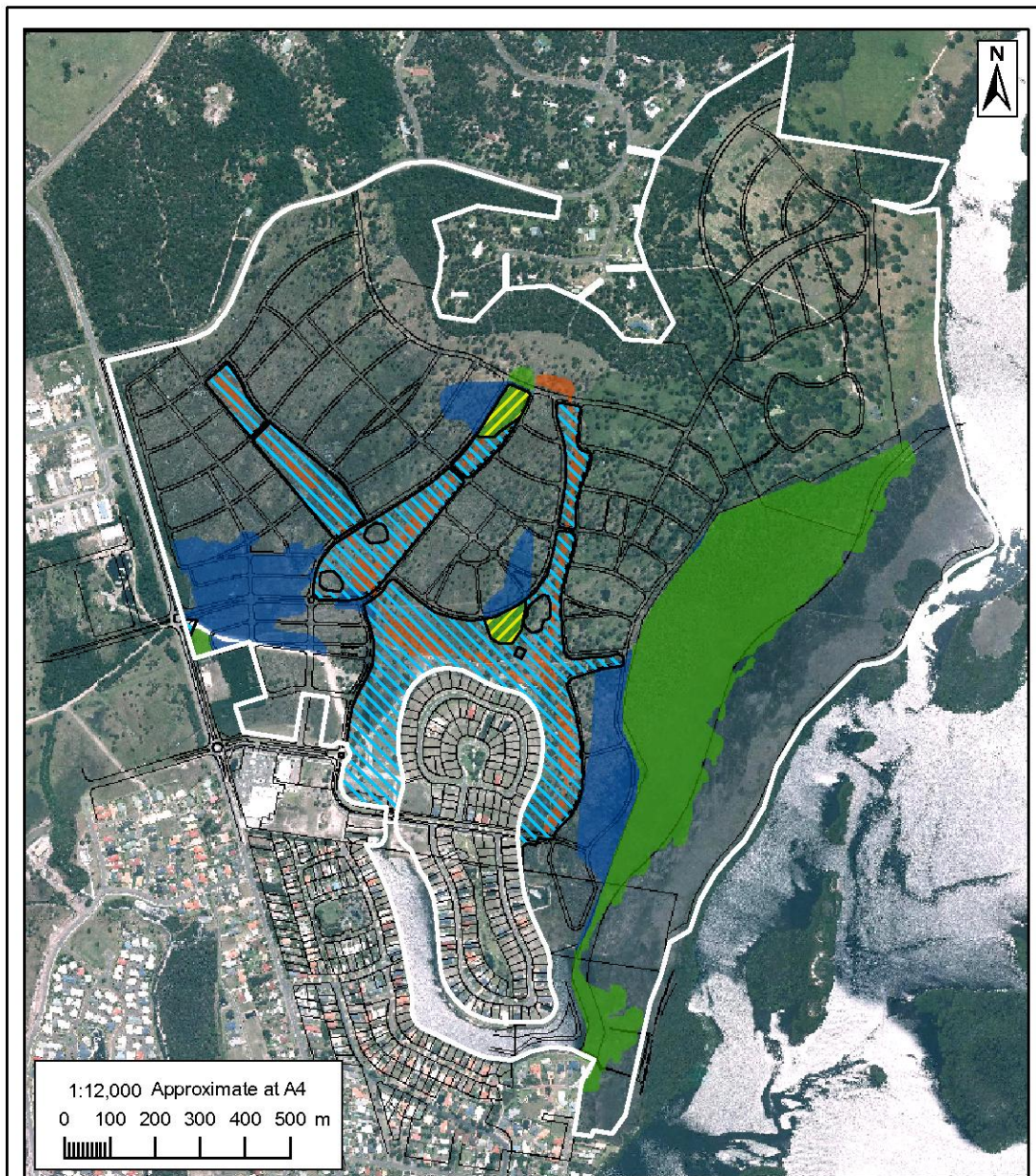
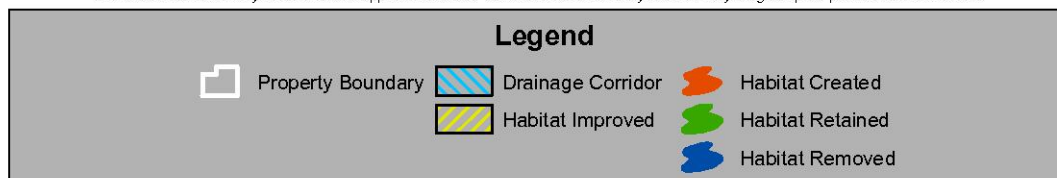


FIGURES



*Subject Site boundary subject to final survey. Plan for indicative purposes only. Not for detailed measurement.
 Flora and fauna survey locations are approximate and have not been fixed by land survey. Original plan produced in A4 colour

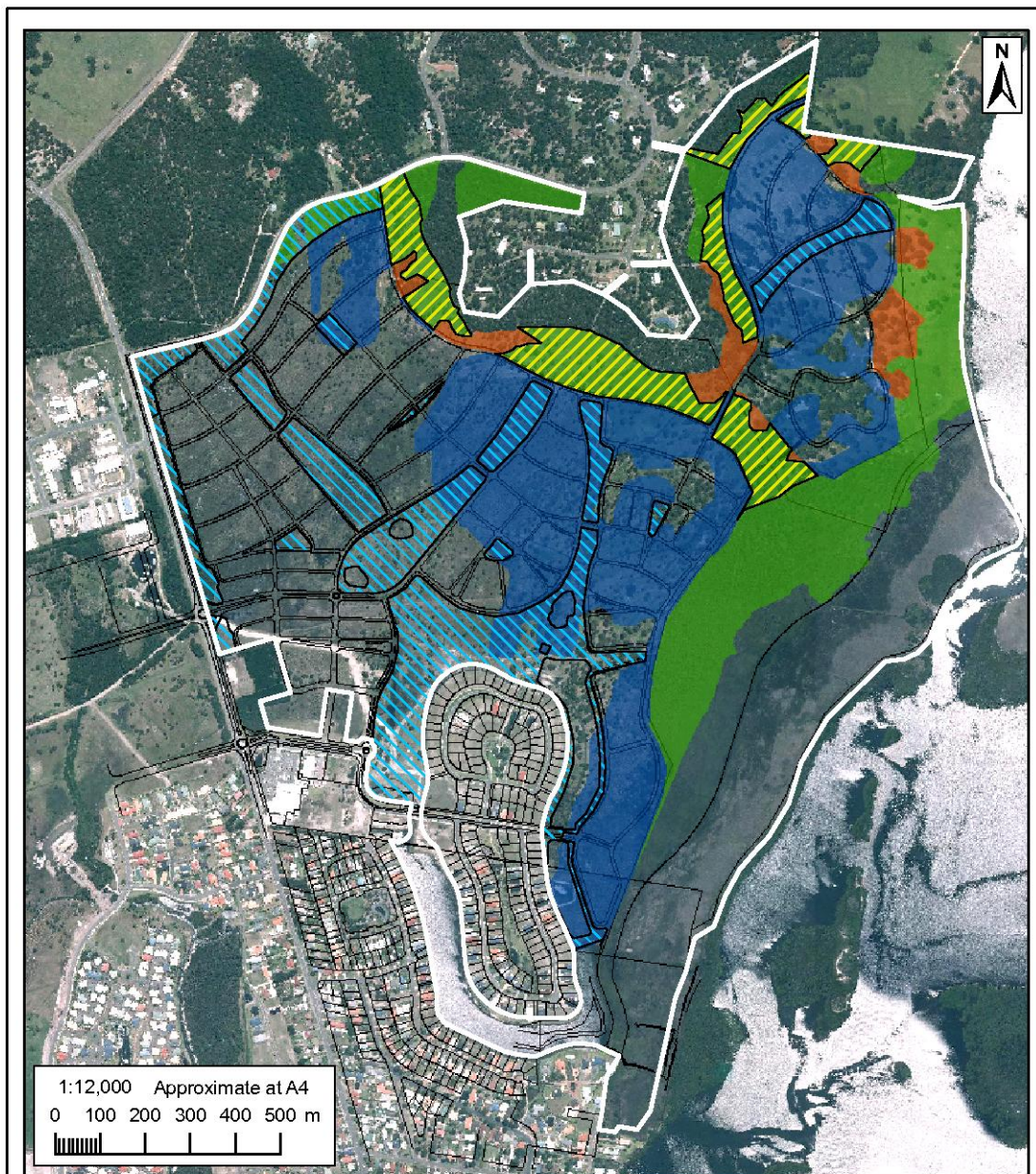


ABN: 62 274 841 042
 PO Box 360
 369 Mann Street
 Gosford NSW 2250
 Ph: (02) 4324 7888
 Fax: (02) 4324 7899
cegoconsult@bigpond.com

W.P. 5/11/11
 20/1/12
 No. 40-012

Figure A6.1
Wallum Froglet Habitat
 Riversdale Tea Gardens

Source: Aerial © Department of Lands (2007)



*Subject Site boundary subject to final survey. Plan for indicative purposes only. Not for detailed measurement.
Flora and fauna survey locations are approximate and have not been fixed by land survey. Original plan produced in A4 colour

Legend

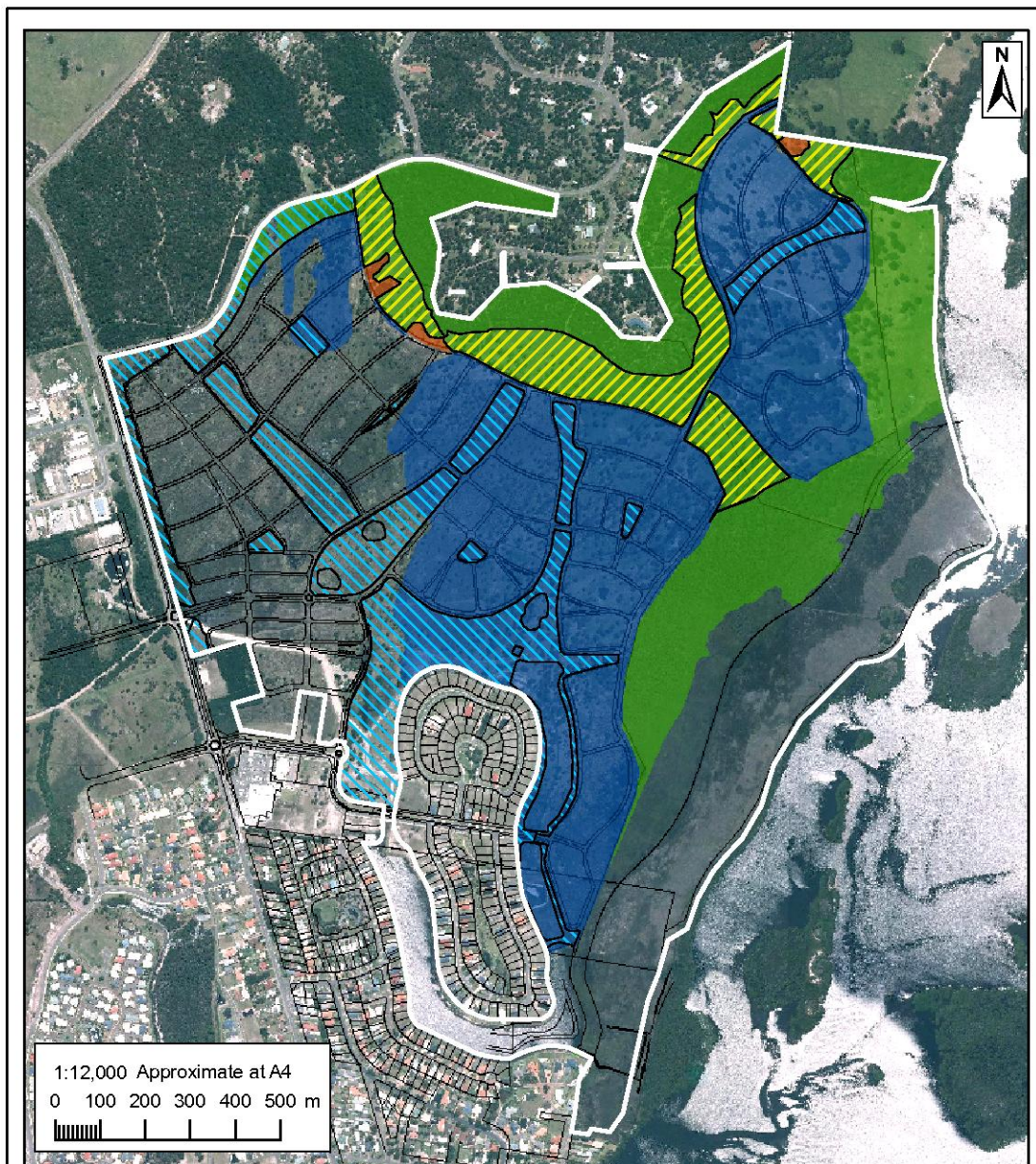
- | | | |
|-------------------|-------------------|-----------------|
| Property Boundary | Drainage Corridor | Habitat Created |
| Habitat Improved | Habitat Retained | Habitat Removed |



ABN: 62 274 841 042
PO Box 360
369 Mann Street
Gosford NSW 2250
Ph: (02) 4324 7888
Fax: (02) 4324 7899
cegoconsult@bigpond.com

Figure A6.2
Swift Parrot Habitat
Riverside, Tea Gardens

Source: Aerial © Department of Lands (2007)



*Subject Site boundary subject to final survey. Plan for indicative purposes only. Not for detailed measurement.
Flora and fauna survey locations are approximate and have not been fixed by land survey. Original plan produced in A4 colour

Legend

- | | | | | | |
|--|-------------------|--|-------------------|--|-----------------|
| | Property Boundary | | Drainage Corridor | | Habitat Created |
| | Habitat Improved | | Habitat Retained | | Habitat Removed |



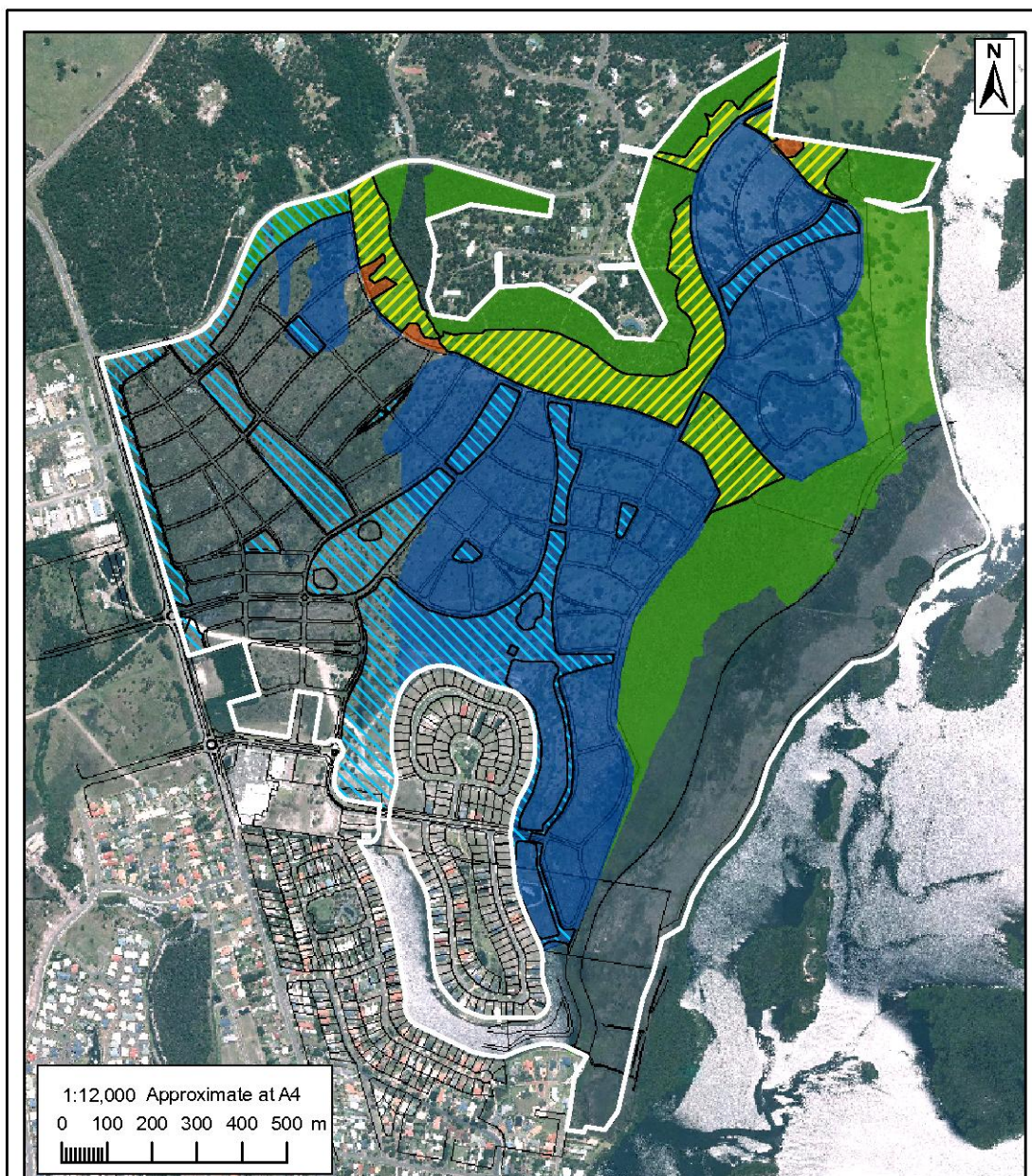
ABN: 62 274 841 042
PO Box 360
369 Mann Street
Gosford NSW 2250
Ph: (02) 4324 7888
Fax: (02) 4324 7899
cegoconsult@bigpond.com

ISSUE 1.0
20/01/07
REV 1.0
20/01/07

Figure A6.3

Barking Owl, Powerful Owl and Masked Owl Habitat
Riverside Tea Gardens

Source: Aerial © Department of Lands (2007)



*Subject Site boundary subject to final survey. Plan for indicative purposes only. Not for detailed measurement.
Flora and fauna survey locations are approximate and have not been fixed by land survey. Original plan produced in A4 colour

Legend

- | | | |
|-------------------|-------------------|-----------------|
| Property Boundary | Drainage Corridor | Habitat Created |
| Habitat Improved | Habitat Retained | Habitat Removed |

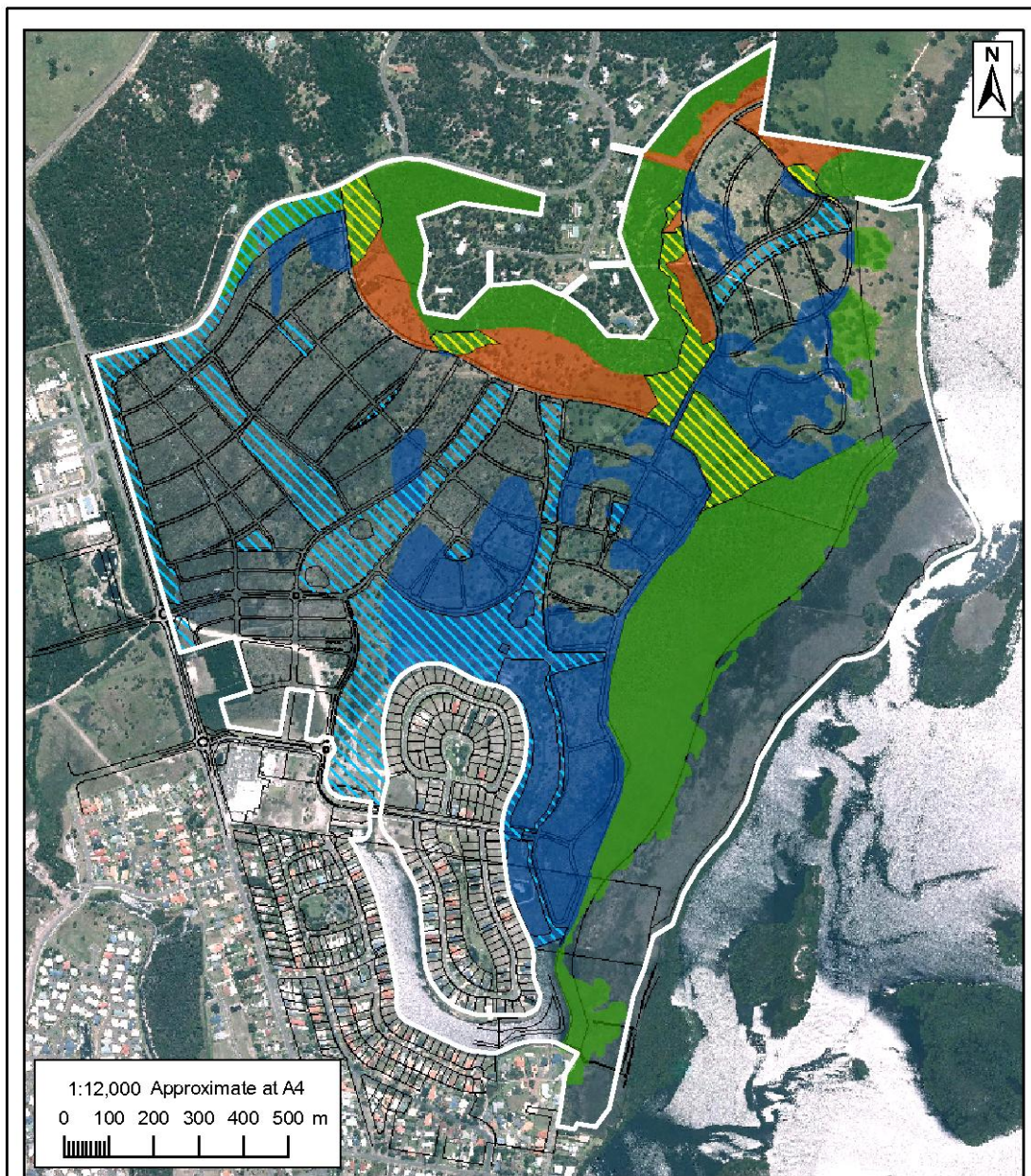


ABN: 62 274 841 042
PO Box 360
369 Mann Street
Gosford NSW 2250
Ph: (02) 4324 7888
Fax: (02) 4324 7899
cegcconsult@bigpond.com

ISSUE 1.0
20/01/07
REV 1.0
20/01/07

Figure A6.4
Koala Habitat
Riverside Tea Gardens

Source: Aerial © Department of Lands (2007)



*Subject Site boundary subject to final survey. Plan for indicative purposes only. Not for detailed measurement.
Flora and fauna survey locations are approximate and have not been fixed by land survey. Original plan produced in A4 colour

Legend

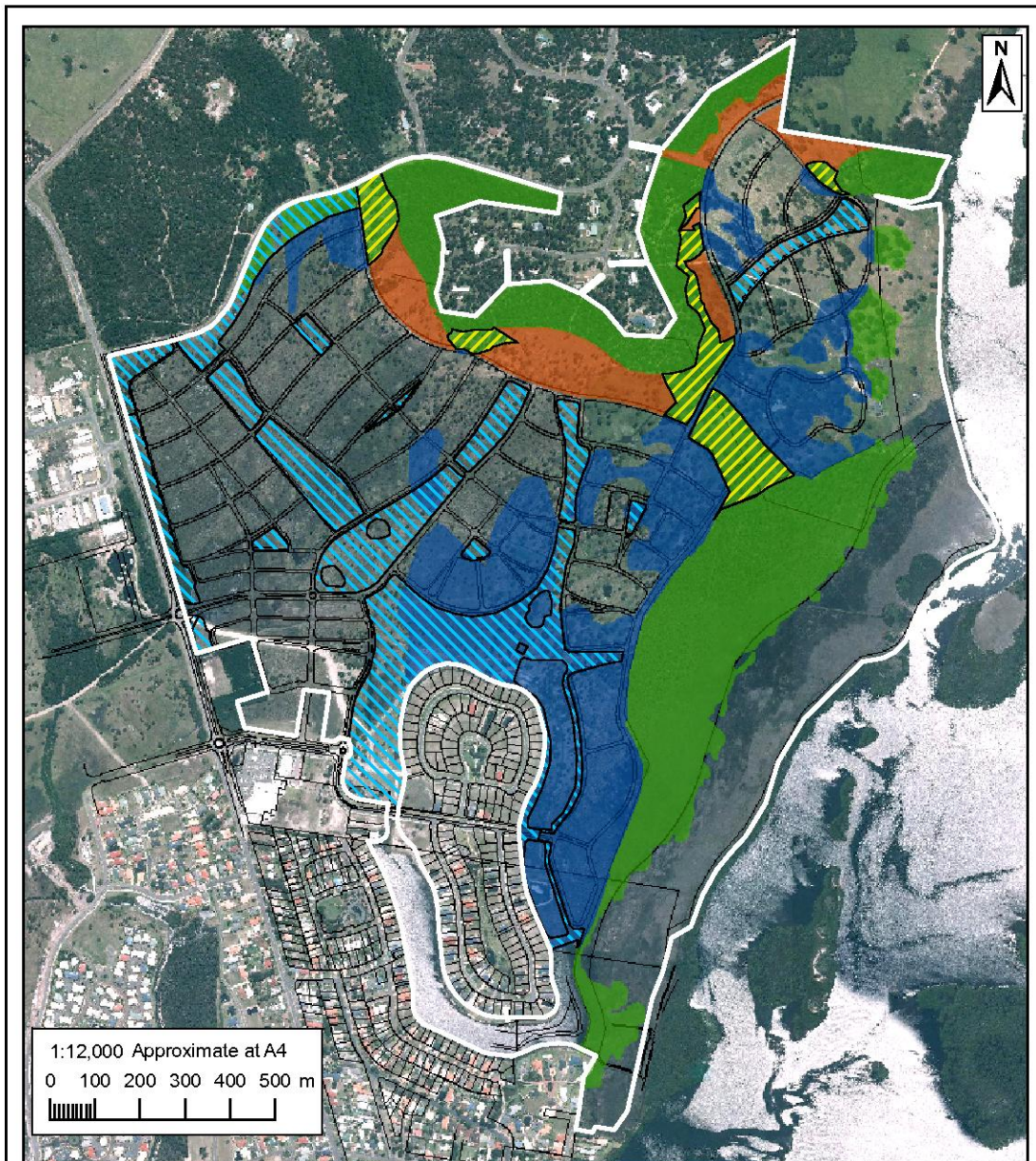
- | | | |
|-------------------|-------------------|-----------------|
| Property Boundary | Drainage Corridor | Habitat Created |
| Habitat Improved | Habitat Retained | Habitat Removed |



ABN: 62 274 841 042
PO Box 360
369 Mann Street
Gosford NSW 2250
Ph: (02) 4324 7888
Fax: (02) 4324 7899
cegoconsult@bigpond.com

Figure A6.5
Spotted-tailed Quoll and Eastern-pygmy Possum Habitat
Riverside Tea Gardens

Source: Aerial © Department of Lands (2007)



*Subject Site boundary subject to final survey. Plan for indicative purposes only. Not for detailed measurement.
 Flora and fauna survey locations are approximate and have not been fixed by land survey. Original plan produced in A4 colour

Legend

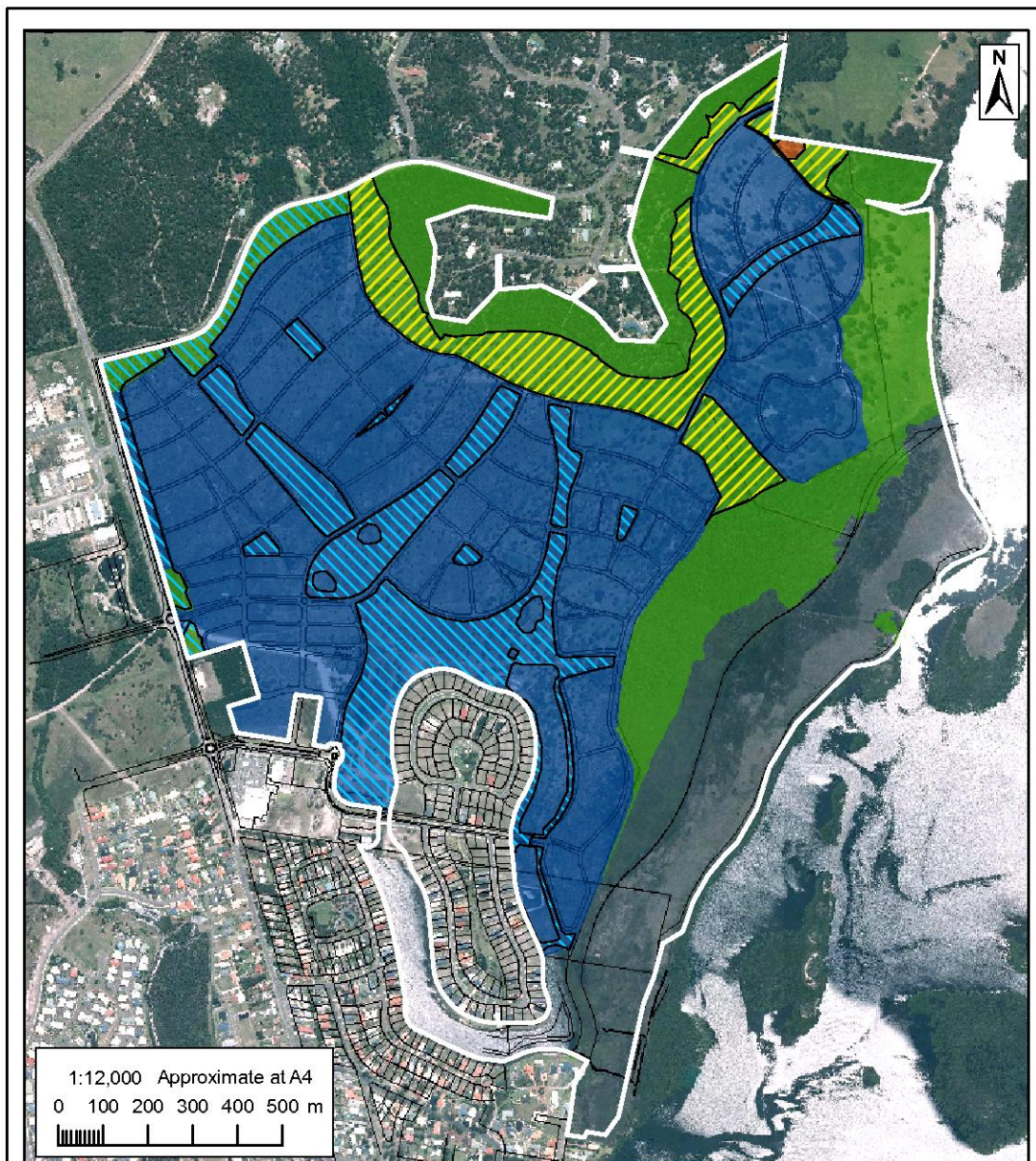
- | | | |
|-------------------|-------------------|-----------------|
| Property Boundary | Drainage Corridor | Habitat Created |
| Habitat Improved | Habitat Retained | Habitat Removed |



ABN: 62 274 841 042
 PO Box 360
 369 Mann Street
 Gosford NSW 2250
 Ph: (02) 4324 7888
 Fax: (02) 4324 7899
cegcconsult@bigpond.com

Figure A6.6
Squirrel Glider Habitat
 Riverside Tea Gardens

Source: Aerial © Department of Lands (2007)



*Subject Site boundary subject to final survey. Plan for indicative purposes only. Not for detailed measurement.
Flora and fauna survey locations are approximate and have not been fixed by land survey. Original plan produced in A4 colour

Legend

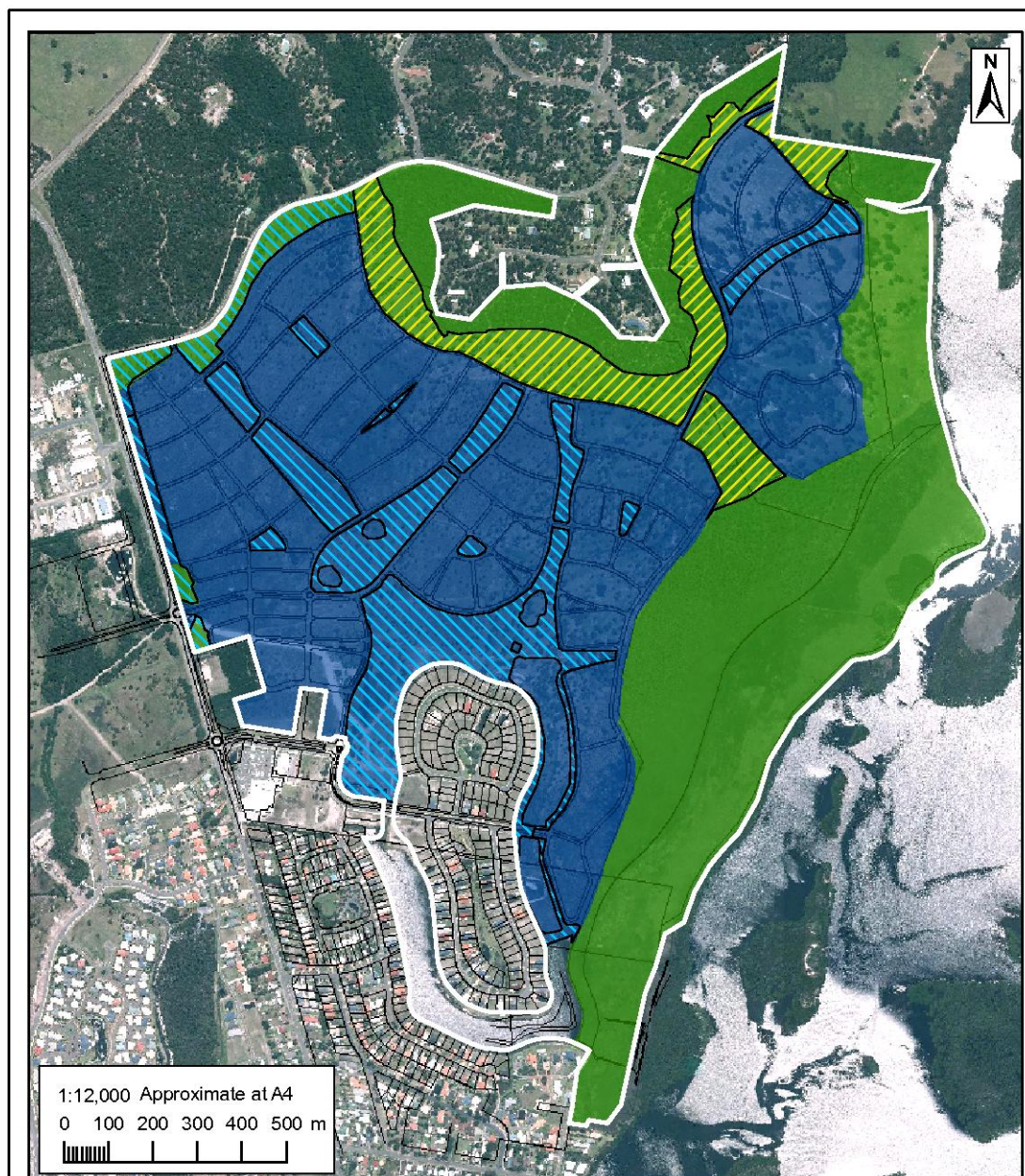
- | | | | | | |
|-------------------------------------------------------------------------------------|-------------------|-------------------------------------------------------------------------------------|-------------------|-------------------------------------------------------------------------------------|-----------------|
|  | Property Boundary |  | Drainage Corridor |  | Habitat Created |
|  | Habitat Improved |  | Habitat Retained |  | Habitat Removed |



ABN: 62 274 841 042
PO Box 360
369 Mann Street
Gosford NSW 2250
Ph: (02) 4324 7888
Fax: (02) 4324 7899
cegoconsult@bigpond.com

Figure A6.7
Grey-headed Flying-fox Habitat
Riversdale Tea Gardens

Source: Aerial © Department of Lands (2007)



*Subject Site boundary subject to final survey. Plan for indicative purposes only. Not for detailed measurement.
 Flora and fauna survey locations are approximate and have not been fixed by land survey. Original plan produced in A4 colour

Legend

- | | | |
|-------------------|-------------------|------------------|
| Property Boundary | Drainage Corridor | Habitat Retained |
| Habitat Improved | Habitat Removed | |



ABN: 62 274 841 042
 PO Box 360
 369 Mann Street
 Gosford NSW 2250
 Ph: (02) 4324 7888
 Fax: (02) 4324 7899
 cegconsult@bigpond.com

ISS: 15.03.11
 20/01/12
 Rev A0-002

Figure A6.8
Threatened Microbats Habitat
 Riverside Tea Gardens

Source: Aerial © Department of Lands (2007)