

1 THE SPORTS/CULTURAL ZONE

- Indoor Sport, Cultural/Recreation facility
- Soccer fields and grand stand
- Multiple use courts - netball/basketball/tennis
- Spectator parking
- Picnic shelters and BBQ facilities
- Commercial opportunities
- Fast food stand

2 THE FORMER AIRSTRIP PROMENADE

- Water retention/filtration with small open water bodies
- Constructed habitats from Sydney Coastal Riverflat Forest
- Special Interest/Recreation Group Facilities
- Access point to parklands
- Regional Playground
- Picnic and BBQ Facilities

3 THE INSTITUTIONAL ZONE

- Tourism & Education Facilities & Institutions
- Auxillary spaces for Conferences & Events
- Parking

4 THE RECREATION HUB

- Recreational open space
- Picnic shelters and BBQ facilities
- Large event space
- Translocation and revegetation of native grasslands
- Function/Entertainment Centre

5 THE PRODUCTION BASED LANDSCAPE ZONE

- Land Banking
- Urban Forestry
- Flower production
- Market gardening
- Revegetation
- Fodder production
- Produce sales booth
- Agistment

6 THE WETLANDS

- Open waterbody / wetland
- Boardwalk
- Shelters and seating
- Fitness running track

7 THE FUTURE COMMERCIAL/RECREATION ZONE

- Fauna habitat along creek
- Interim environmental uses prior to further commercial development proposals



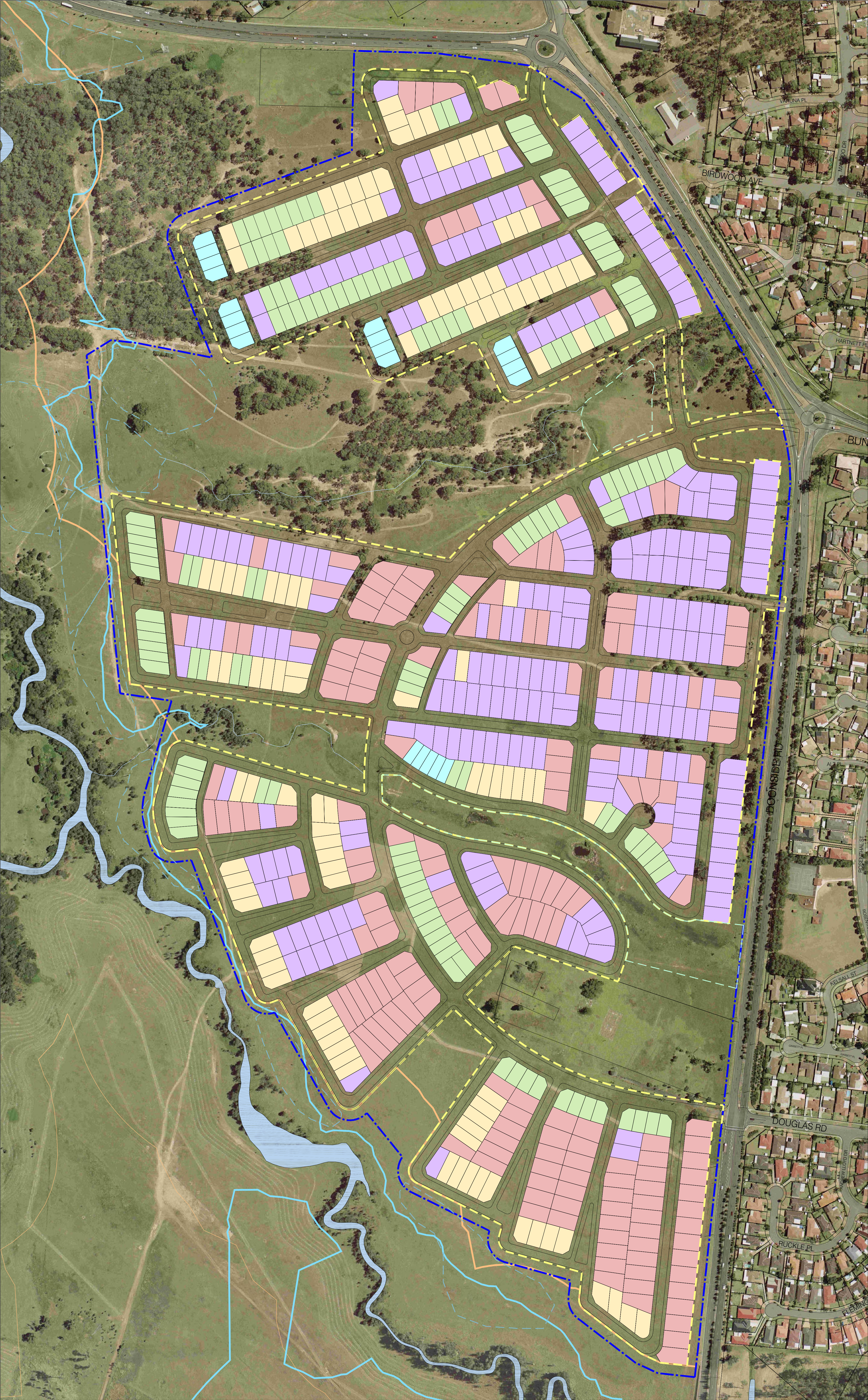
- 1 THE SPORTS/CULTURAL ZONE**
- Indoor Sport, Cultural/Recreation facility
 - Soccer fields and grand stand
 - Multiple use courts - netball/basketball/tennis
 - Spectator parking
 - Picnic shelters and BBQ facilities
 - Commercial opportunities
 - Fast food stand
- 2 THE FORMER AIRSTRIP PROMENADE**
- Water retention/filtration with small open water bodies
 - Constructed habitats from Sydney Coastal Riverflat Forest
 - Special Interest/Recreation Group Facilities
 - Access point to parklands
 - Regional Playground
 - Picnic and BBQ Facilities

- 3 THE INSTITUTIONAL ZONE**
- Tourism & Education Facilities & Institutions
 - Auxillary spaces for Conferences & Events
 - Parking
- 4 THE RECREATION HUB**
- Recreational open space
 - Picnic shelters and BBQ facilities
 - Large event space
 - Translocation and revegetation of native grasslands
 - Function/Entertainment Centre

- 5 THE PRODUCTION BASED LANDSCAPE ZONE**
- Land Banking
 - Urban Forestry
 - Flower production
 - Market gardening
 - Revegetation
 - Fodder production
 - Produce sales booth
 - Agistment
- 6 THE WETLANDS**
- Open waterbody / wetland
 - Boardwalk
 - Shelters and seating
 - Fitness running track
- 7 THE FUTURE COMMERCIAL/RECREATION ZONE**
- Fauna habitat along creek
 - Interim environmental uses prior to further commercial development proposals

- LEGEND**
- Site Boundary
 - ➔ Proposed Entry
 - ➔ Existing Entry
 - ➔ Possible Future Entry
 - ➔ Main Pedestrian Site Access
 - ➔ Proposed Sub-Station
 - ➔ Pathways
 - ➔ Possible Future Road
 - ➔ Creek Crossings
 - ➔ Wetlands
 - ➔ Waterbody
 - ➔ Playing Fields

- Existing Vegetation
- Proposed Vegetation
- Proposed Street Trees
- Productive Landscape
- Native Grasses
- Detention Area
- Environmental Corridor
 - Riparian Restoration
 - Recover & Consolidate Existing Vegetation
 - Fauna Habitat
 - Bird Hides
 - Restricted Access & creek crossings

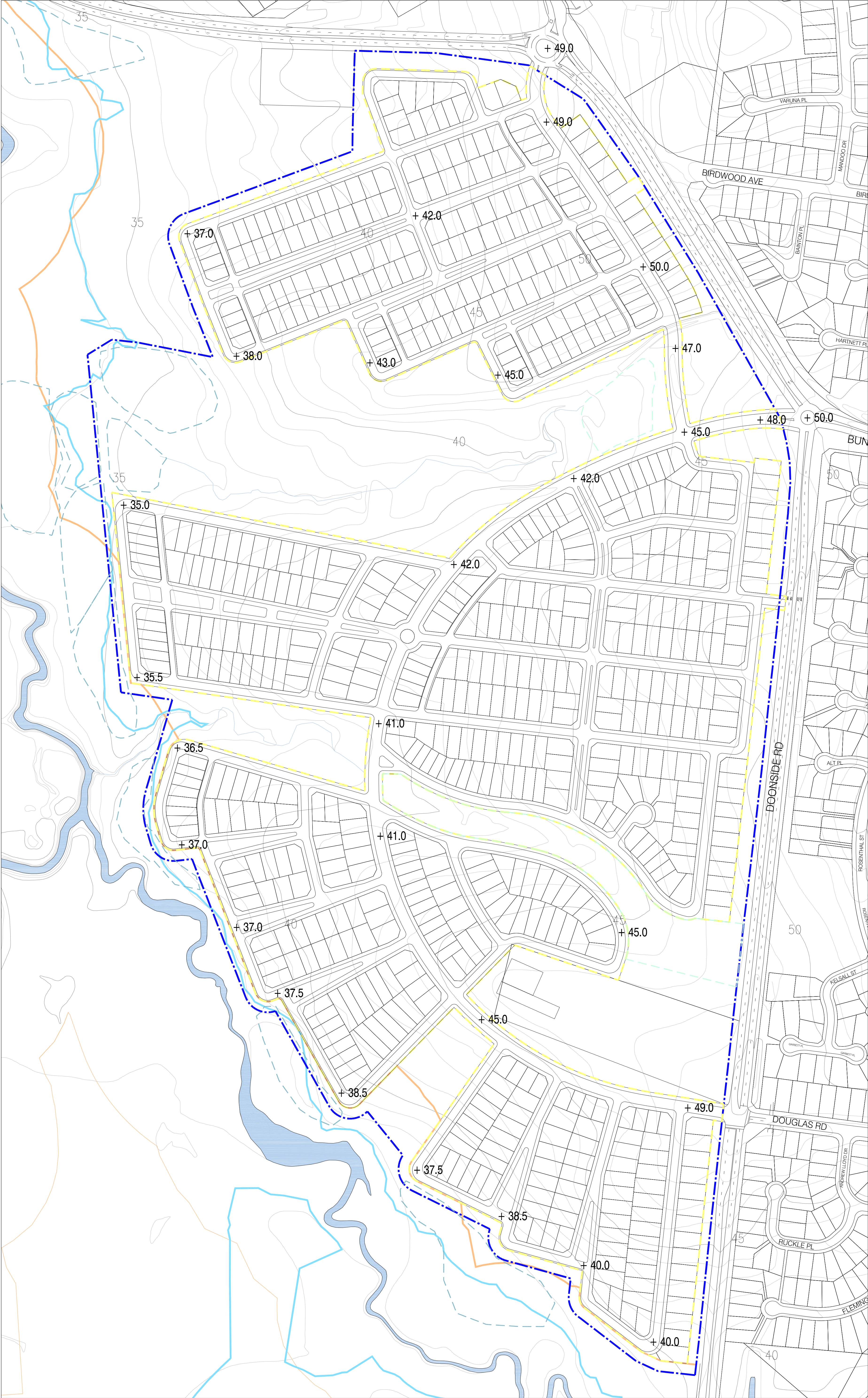


LEGEND

- SITE BOUNDARY (79.24ha)
- INDICATIVE SUBDIVISION FOOTPRINT (54.9ha 716lots)
- 100 YEAR FLOOD LINE
- BIODIVERSITY CORRIDOR
- MAIN WATERBODY
- APPROX CENTRE LINE OF CREEK
- DETENTION AREA
- STORMWATER TREATMENT WETLAND
- 550sqm Lots
- 500sqm Lots
- 450sqm Lots
- 350sqm Lots
- 250sqm Lots

Development Footprint 54.9ha
Net developable area 342300m²
Eco-median & pocket park 10462m²
Road 196024m²

250m² – 21 Lots (2.9%)
350m² – 143 Lots (20.0%)
450m² – 116 Lots (16.2%)
500m² – 250 Lots (34.9%)
550m² – 186 Lots (26.0%)
Total – 716 Lots (100.0%)



LEGEND

- SITE BOUNDARY (79.24ha)
- INDICATIVE SUBDIVISION FOOTPRINT (54.9ha 716 lots)
- 100 YEAR FLOOD LINE
- BIODIVERSITY CORRIDOR
- MAIN WATERBODY
- APPROX CENTRE LINE OF CREEK
- DETENTION AREA
- STORMWATER TREATMENT WETLAND
- + 48.0 SPOT LEVELS

Development Footprint 54.9ha
Net developable area 342300m²
Eco-median & pocket park 10462m²
Road 196024m²

250m² – 21 Lots (2.9%)
350m² – 143 Lots (20.0%)
450m² – 116 Lots (16.2%)
500m² – 250 Lots (34.9%)
550m² – 186 Lots (26.0%)
Total – 716 Lots (100.0%)

BUNGARRIBEE PRECINCT

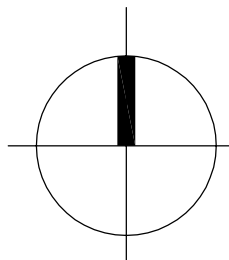
DATE 14 August 2007 Prepared for DOP_LANDCOM INDICATIVE ROAD RLS

SOURCE: ARCHITECTUS



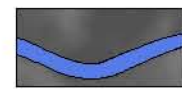




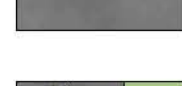

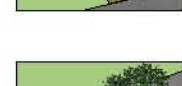


M 20 40 100 200

Scale 1:2000 @ A1

Drawing no. Revision 1



Legend

-  Study boundary
-  Existing contours.
-  Creekline.
-  Existing high quality vegetation
-  Existing tree to be retained where possible
-  Pedestrian pathways.
-  Shareway paths.
-  Road.
-  Singular Street trees planting
-  Cope type A Street trees.
-  Cope type B Street trees.
-  Parklands revegetation

Key

- 1

Proposed substation
- 2

Acoustic barrier / mounds
- 3

Stormwater detention areas. Refer Water Sensitive Urban Design strategy for detail
- 4

Eco-Parks. Refer SK30 and Water Sensitive Urban Design strategy for detail
- 5

Bushland Park. Active play and exercise elements through-out space. Creekline to be re-instated, refer Water Sensitive Urban Design strategy for detail
- 6

Former creekline and channel to be re-aligned and re-aligned
- 7

Constructed Stormwater treatment wetland, refer SK28 and Water Sensitive Urban Design strategy for detail
- 8

Kick about / Open space with childrens play facilities
- 9

Shade structure / pavilion to edge of open space
- 10

Proposed bushland plantings
- 11

Southern Water way to be retained. Riparian corridor to 10 from top of bank
- 12

Existing row of trees to be retained to Doonside Road
- 13

Homestead park/ open space with community centre, carparking & interpretive signage.
- 14

Homestead view park. Refer SK31 for detail
- 15

Connection to Western Sydney Parklands / creek crossing (pedestrian and cycle only)
- 16

Bungarrabee Creek
- 17

Pocket park with childrens play facilities
- 18

Connection to Western Sydney Parklands over Eastern Creek (pedestrian and cycle only)
- 19

Pedestrian crossing
- 20

Future possible pedestrian crossing
- 21

Kareela Avenue Water Way

DOONSIDE RESIDENTIAL ESTATE TYPICAL PLANT SCHEDULE

Based on Cumberland Plain Woodland Species

Botanical Name	Common Name	Height	Spacing
TREES			
<i>Angophora floribunda</i>	Rough-barked Apple	15000	As shown
<i>Eucalyptus amplifolia</i>	Cabbage Gum	30000	As shown
<i>Eucalyptus fibrosa</i>	Red Ironbark	20000	As shown
<i>Eucalyptus moluccana</i>	Grey Box	25000	As shown
<i>Eucalyptus crebra</i>	Narrow Leaved Ironbark	15000	As shown
<i>Eucalyptus leucomis</i>	Forest Red Gum	15000	As shown
<i>Melaleuca decora</i>	Melaleuca	15000	As shown
<i>Melaleuca nodosa</i>	Melaleuca	2000	As shown
<i>Melaleuca stypheloides</i>	Prickly-leaved Paper-bark	8000	As shown
<i>Tristanopsis laurina</i>	Water Gum	10000	As shown
SHRUBS			
<i>Acacia ficata</i>	Hickory Wattle	2500	2000
<i>Acacia ulicifolia</i>	Prickly Moses	1500	1200
<i>Bursaria spinosa</i> var. <i>spinosa</i>	Plump Windmill Grass	1000	800
<i>Chloris verticosa</i>	Gorse bitter pea	1000	800
<i>Davea ulicifolia</i>	Gorse bitter pea	2000	1500
<i>Daveia genistifolia</i>		1500	1200
<i>Daveia ulicifolia</i>		1500	1200
<i>Dichelachne micrantha</i>	Shorthair Plumegrass	1200	1000
<i>Dillwynia juniperina</i>		1500	1000
<i>Dillwynia parvifolia</i>		1000	800
<i>Dillwynia sieberi</i>		1000	800
<i>Dodonaea viscosa</i> ssp. <i>cuneata</i>	Wedge leaf Hopbush	1000	800
<i>Echinopogon caespitosus</i>	Bushy Hedgehog-grass	1500	1000
<i>Grevillea juniperina</i>	Juniper-leaf Grevillea	1000	800
<i>Kurzea ambigua</i>	White Kurzea	3000	2000
<i>Lomandra longifolia</i>	Spiny-headed mat-rush	1000	500
<i>Putanea microphylla</i>		2000	1000
<i>Putanea parvifolia</i>		1000	800
RIPARIAN			
(Refer also to WSUD Strategy Report)			
<i>Alisma plantago-aquatica</i>	Water plantain	300	200
<i>Casuarina glauca</i>	Swamp oak	20000	Cope
<i>Carex asprella</i>	Tail Flat Sedge	700	500
<i>Carex gaudichadiana</i>	Tufted sedge	400	300
<i>Gahnia aspera</i>	Rough Saw-sedge	1000	600
<i>Juncus kraussii</i>	Sea Rush	500	250
<i>Juncus kraussii</i> ssp. <i>australiensis</i>	Common Rush	800	300
<i>Juncus subulatus</i>		8000	Cope
<i>Melaleuca stypheloides</i>	Prickly-leaved Paper-bark	8000	Cope
<i>Schoenoplectus validus</i>		600	400
GROUNDCOVERS			
<i>Dianella longifolia</i> var. <i>longifolia</i>	Pale Flax Lily	600	400
<i>Dianella 'Silver'</i>	Silver Flax Lily	500	400
<i>Dianella revoluta</i>	Flax lily	1000	400
<i>Hardenbergia violacea</i>	Native sarsaparilla	200	300
<i>Clematis glycinoides</i>	Forest dematis		Climber
GRASSES			
<i>Poa labillardieri</i>	Tussock Grass	900	400
<i>Eragrostis elongata</i>	Clustered Lovegrass	800	300
<i>Darthonia tenuis</i>	Elvera 'Lavender Grass'	800	300
<i>Microloana atpoides</i> var. <i>atpoides</i>	Weeping Grass	400	250
<i>Themeda australis</i>	Kangaroo Grass	1000	500
<i>Wahlenbergia gracilis</i>	Native Blue Bell	200	100

NOTES

1. Information relating to architectural, electrical, hydraulic, civil and other works as represented on EDRAW documentation is for reference and EDRAW co-ordination purposes only. All documentation to these and other works outside EDRAW scope should be referred to the relevant consultants drawings and specification for details.
2. This drawing should be read in conjunction with EDRAW prepared specification and details. Should a conflict exist advice and direction should be sought from EDRAW prior undertaking any construction works.
3. All levels shown are in metres Australian Height Datum and dimensions in millimetres unless otherwise specified.

30.07.2007	E	Client Issue		
05.08.2007	D	Client Issue		
30.05.2007	C	Client Issue		
27.05.2007	B	Client Issue	07.08.2007	G
17.04.2007	A	Client Issue	03.08.2007	F
				Client Issue

Project Doonside - Residential

Client Department of Planning NSW and Landcom

Drawing Master Plan

EDAW | AECOM

2-14 MOUNTAIN STREET ULTIMO NSW 2007
T 02 9212 3666 F 02 9212 4429 E 029ENY@EDAW.COM

Scale 1 : 1500@A0
Project No. 06047
Drawn CY / MP

SK27G

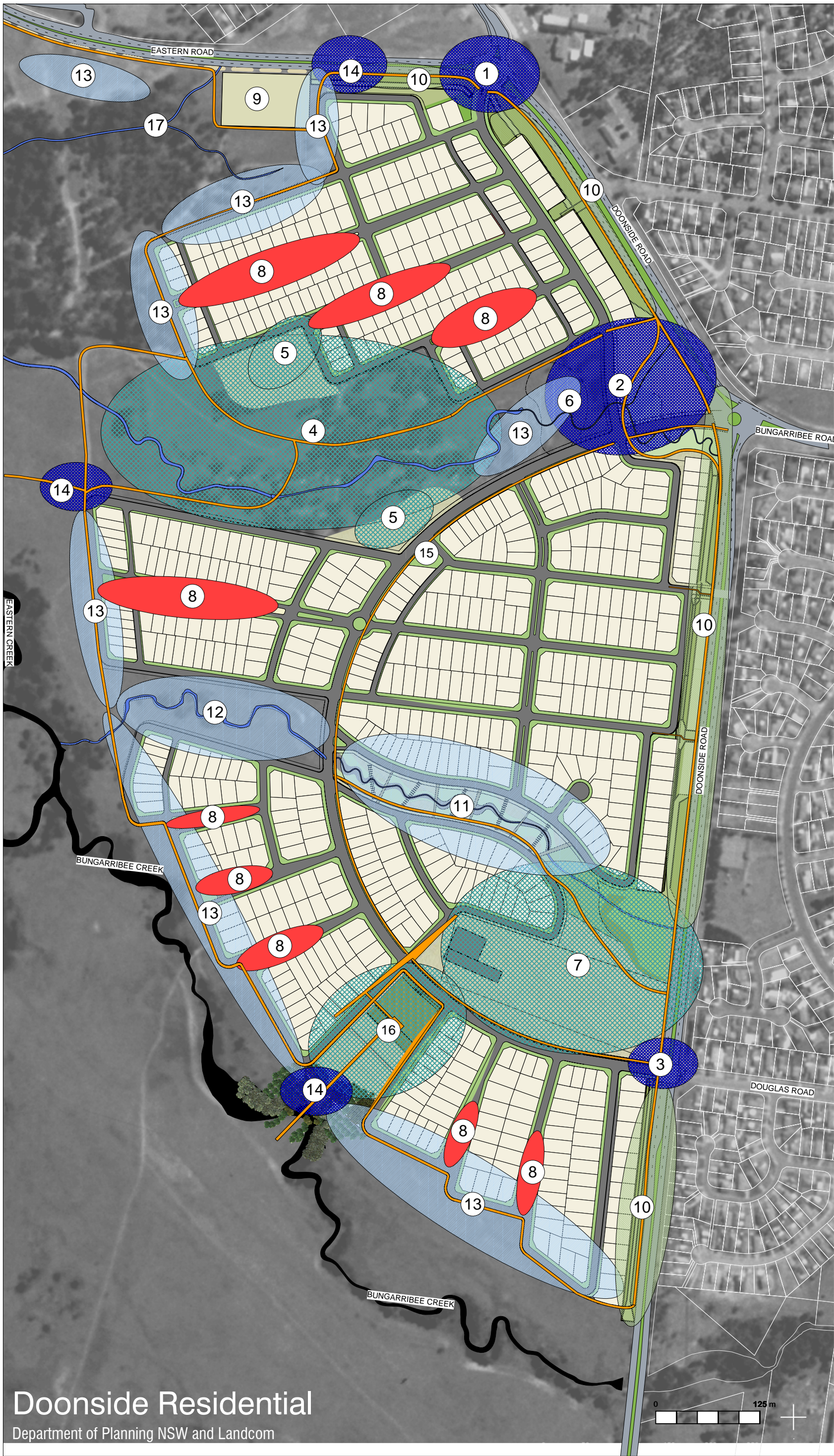
AB N. 37 003 BBS 306

QA 2-1201N

Doonside Residential

Department of Planning NSW and Landcom

0 125 m



Key

1

Northern entry through acoustic mounds.

2

Open entry through existing reinstated bushland with views to parklands. Opportunity for ephemeral landart element to interact with water detention. Refer SK28

3

Southern entry. Potential for community/ artistic sculpture/ installation interpreting homestead heritage. Refer Public Art summary report for detail.

4

Bushland park. Active play/ exercise. Additional tree plantings to enhance habitat / canopy coverage. Opportunity for public art work to be integrated into the design of landscape elements. Refer Public Art summary report for detail.

5

Active open space/ kickabout area in bush land setting with childrens play facilities

6

Reinstated creekline. Refer Water Sensitive Urban Design Strategy for details

7

Homestead park/ open space with community centre, carparking & interpretive signage. Opportunity for public art work to be integrated into the design of landscape elements. Refer Public Art summary report for detail.

8

Eco-parks refer SK30

9

Site for proposed electricity substation

10

Acoustic barrier/ cycleway.

11

Constructed creekline and bioretention amenity zone. Refer SK29. Opportunity for public art work to be integrated into the design of landscape elements. Refer Public Art summary report for detail.

12

Retained creekline & riparian corridor.

13

Parklands interface consisting of shareway paths, bio- retention areas and. Opportunity for public art work to be integrated into the design of landscape elements. Refer Public Art summary report for detail.

14

Parklands entry points.

15

Pocket park with childrens play facilities

16

Homestead View Park

17

Kareela Avenue Water Ways

Pedestrian Connections.

Cycleway connections.

NOTES

1.

Information relating to architectural, electrical, hydraulic, civil and other works as represented on EDAA documentation is for reference and EDAA co-ordination purpose only. All documentation to these and other works outside EDAA scope should be referred to the relevant consultants drawings and specification for details.

2.

This drawing should be read in conjunction with EDAA prepared specification and details. Should a conflict exist advice and direction should be sought from EDAA prior undertaking any construction works.

3.

All levels shown are in metres Australian Height Datum and dimensions in millimetres unless otherwise specified.

Project

Doonside - Residential

Client

Department of Planning NSW and Landcom

Drawing

Openspace diagram

SYDNEY BRISBANE
MELBOURNE
SUNSHINE COAST

EDAW

AECOM

2-14 MOUNTAIN STREET ULTIMO NSW 2007
T 02 9212 3666 F 02 9212 4499 E SYDNEY@EDAW.COM

Scale

N/A

Project No.

06047

Drawn

CY / MP

SK39F

A.B.N. 37 003 886 306

QA 2-12(1)N

Doonside Residential

Department of Planning NSW and Landcom

Large Eucalyptus trees
to insert road verge
framing views out to
parklands

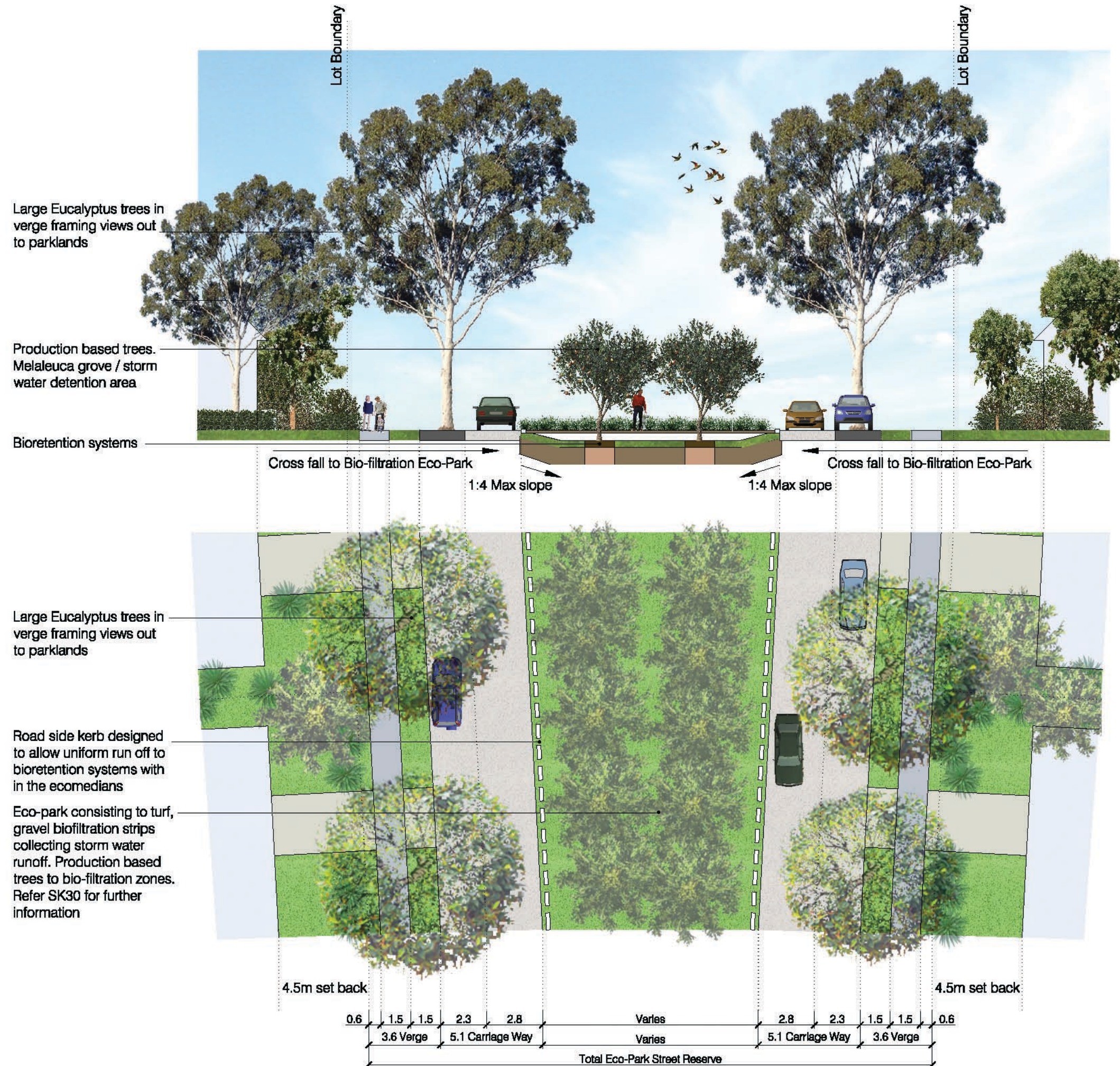


PROJECT PARTNERS
WESTERN SYDNEY PARKLANDS



SCALE 1:200 @ A3	KEY	PROJECT Western Sydney Parklands Bungaribee Precinct Project Doonside Residential Parcel
	DATE & ISSUE 10 August 2007	DESCRIPTION Collector Street (Developed in collaboration with EDAW)





PROJECT PARTNERS
WESTERN SYDNEY PARKLANDS



SCALE 1:200 @ A3

KEY

DATE & ISSUE

10 August 2007

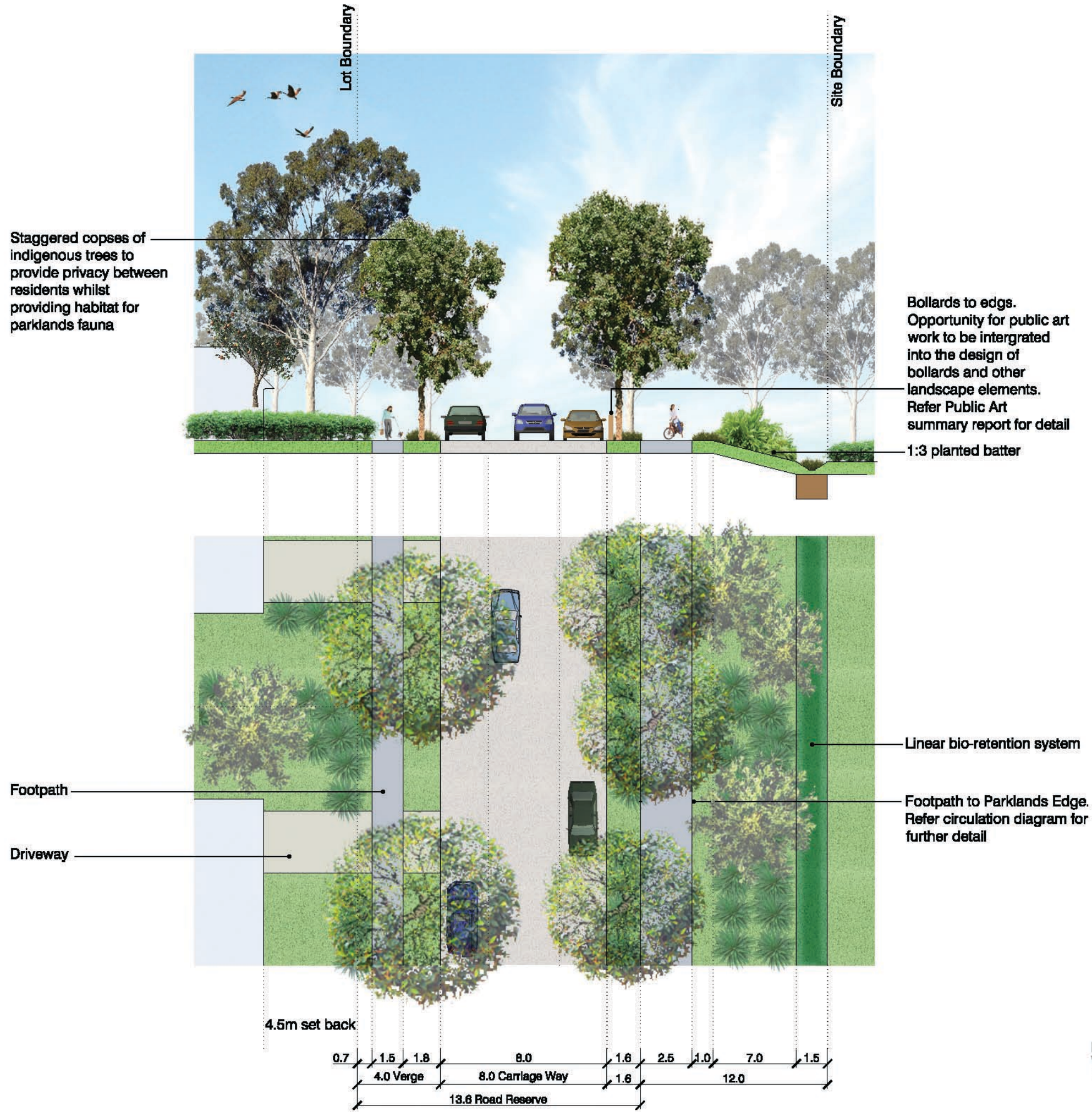
PROJECT

Western Sydney Parklands Bungaribee Precinct Project
Doonside Residential Parcel

DESCRIPTION

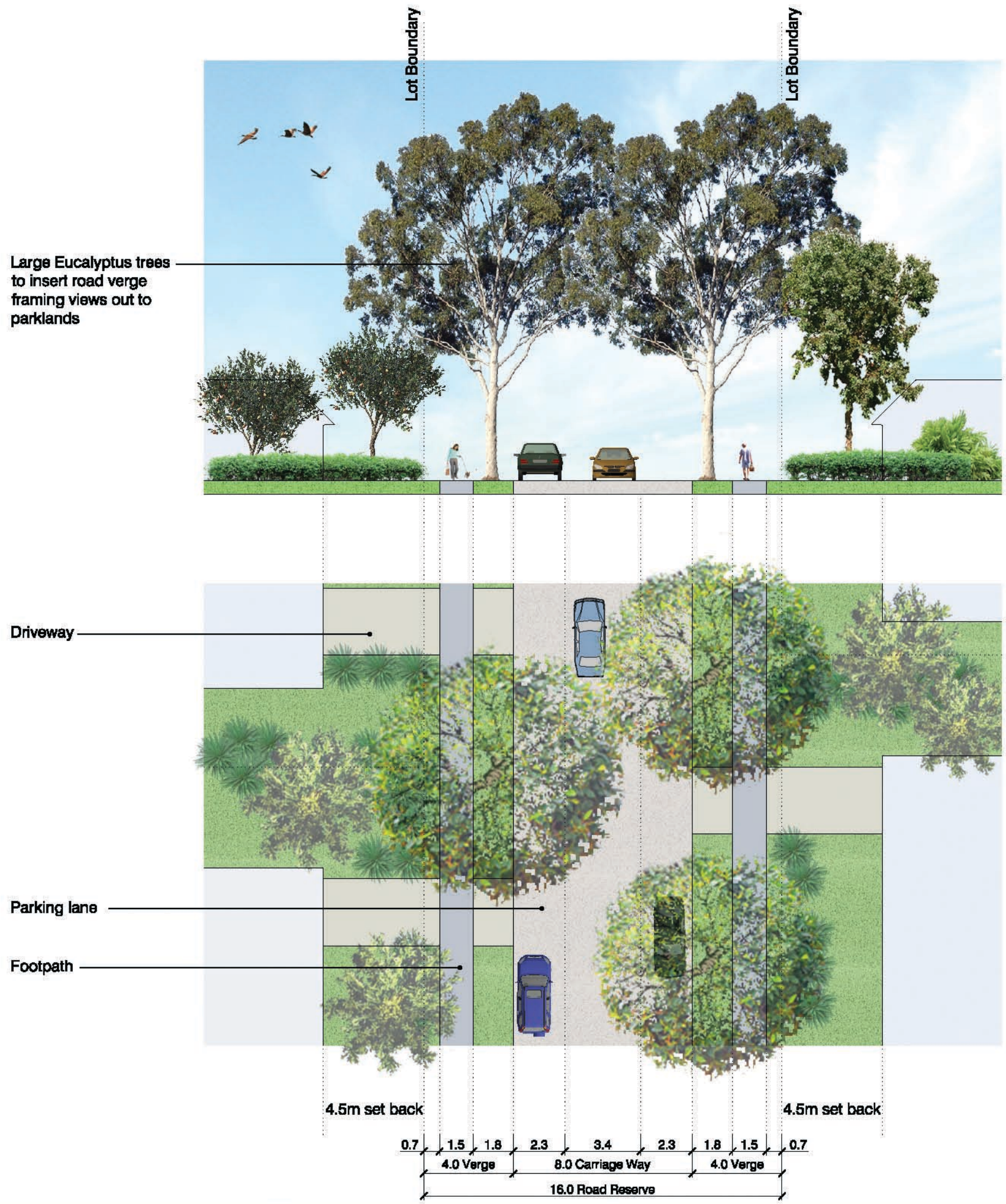
Eco-median Local Street (Developed in collaboration with EDAW)





SCALE 1:200 @ A3	KEY	PROJECT Western Sydney Parklands Bungaribee Precinct Project Doonside Residential Parcel
	DATE & ISSUE 10 August 2007	DESCRIPTION Park Edge Local Street (Developed in collaboration with EDAW)



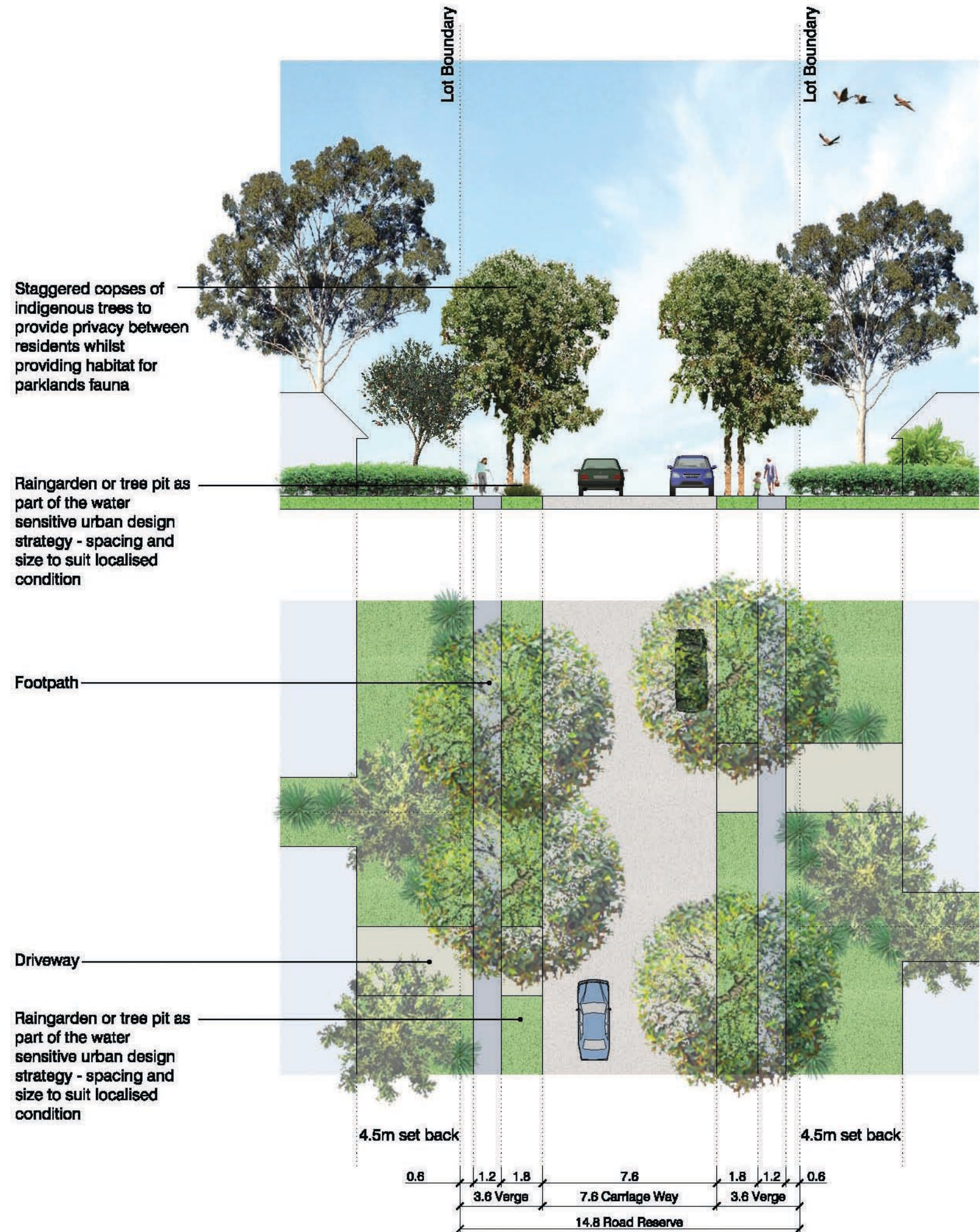


PROJECT PARTNERS
WESTERN SYDNEY PARKLANDS



SCALE 1:200 @ A3	KEY	PROJECT Western Sydney Parklands Bungaribee Precinct Project Doonside Residential Parcel
	DATE & ISSUE 10 August 2007	DESCRIPTION Local Street (Developed in collaboration with EDAAW)





PROJECT PARTNERS
WESTERN SYDNEY PARKLANDS



SCALE 1:200 @ A3

KEY

DATE & ISSUE

10 August 2007

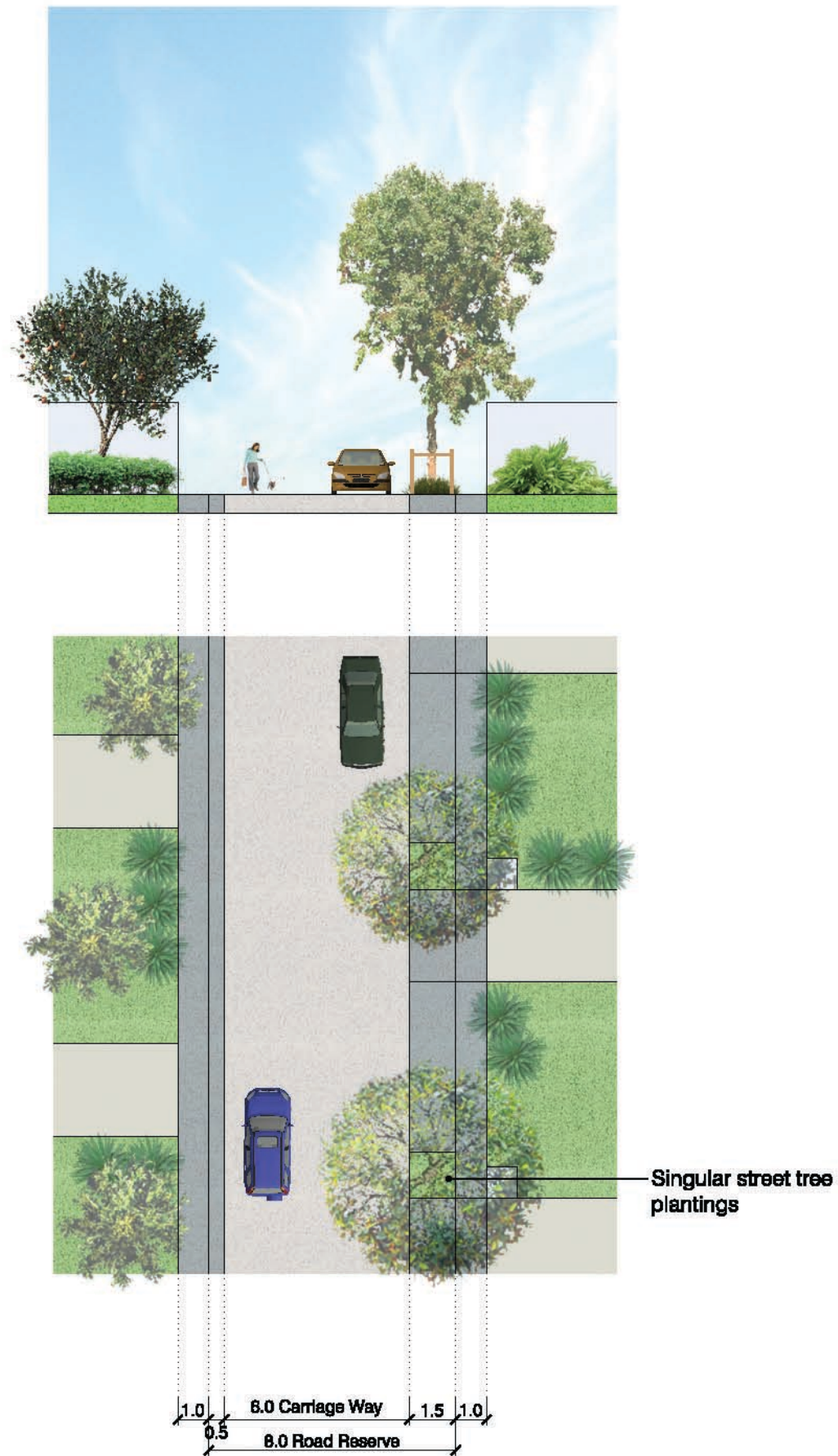
PROJECT

Western Sydney Parklands Bungaribee Precinct Project
Doonside Residential Parcel

DESCRIPTION

Minor Local Street (Developed in collaboration with EDAW)





PROJECT PARTNERS
WESTERN SYDNEY PARKLANDS



SCALE 1:200 @ A3

KEY

DATE & ISSUE

10 August 2007

PROJECT

Western Sydney Parklands Bungaribee Precinct Project
Doonside Residential Parcel

DESCRIPTION

Rear Access Street (Developed in collaboration with EDAW)



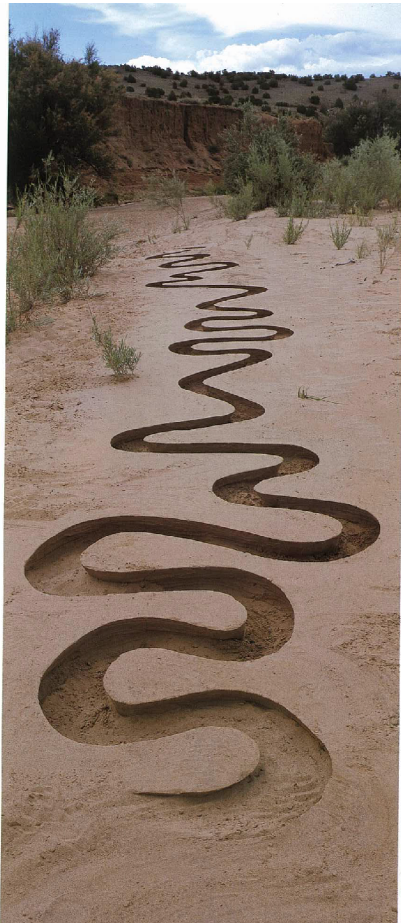
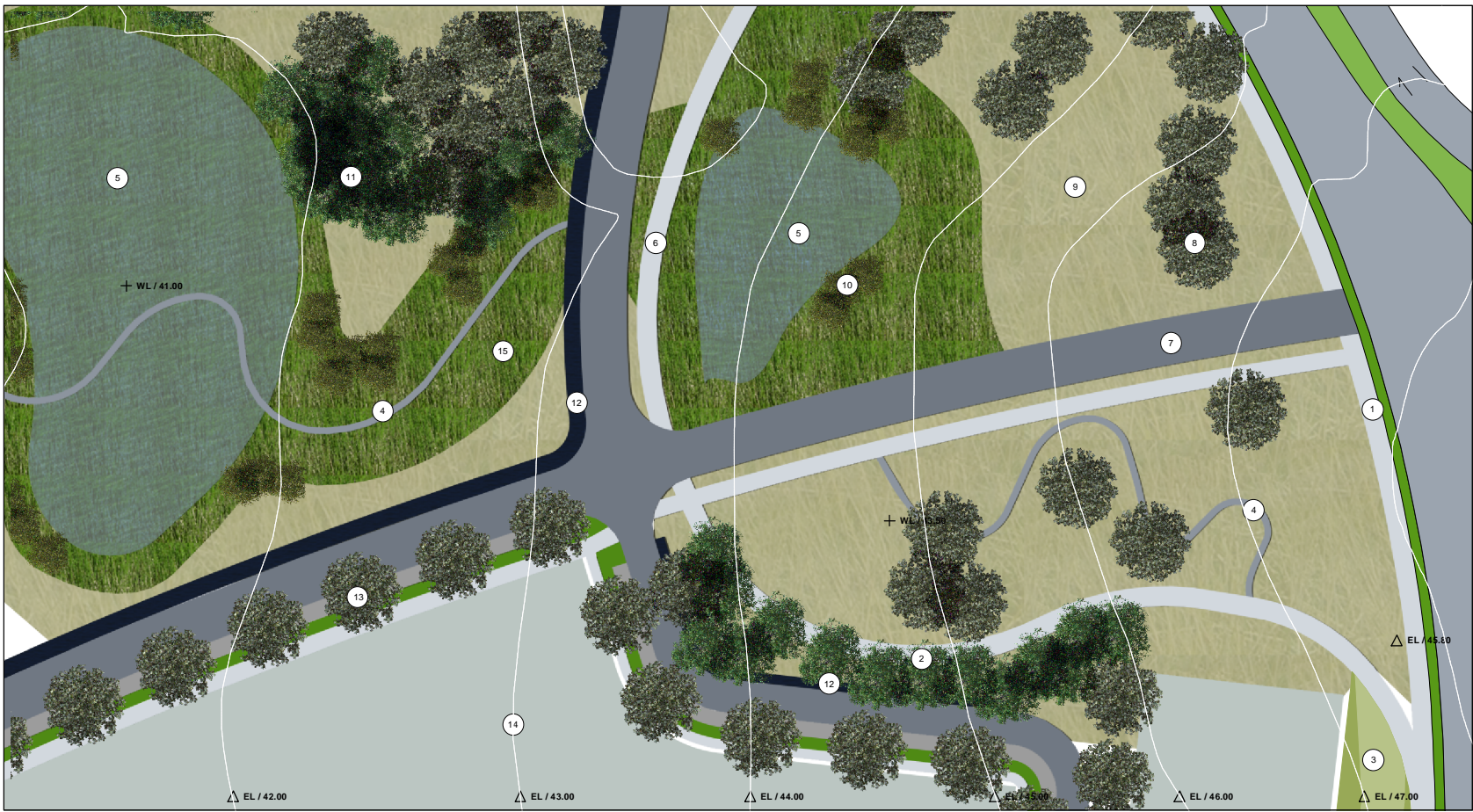
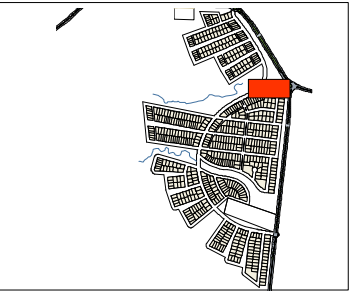


Image One and Two: Andy Goldsworthy Landart



Key Plan



Key

- 1 Doonside Road cycleway
- 2 Shareway path connecting to parklands
- 3 Doonside Road acoustic barrier. Refer Noise assessment report for details
- 4 Possible landart opportunity. Refer images A.
- 5 Stormwater detention basins. Refer Water Sensitive Urban Design Strategy for detail
- 6 Pedestrian/ cycleway to road edge
- 7 Main entrance to Estate. Refer traffic report for details.
- 8 Existing trees to be retained
- 9 Existing grasslands to be retained and enhanced
- 10 Melaleuca groves
- 11 Bushland regeneration
- 12 Bioretention to road edge
- 13 Collector Road Street Trees
- 14 Existing contours at 1 meter intervals
- 15 Wetland planting. Refer Water Sensitive Urban design Strategy for Detail

NOTE: Plan depicts creekline following rain event. During dry periods water will recede to Creekline channel. (Refer Water Sensitive Urban Design Strategy for details.)

NOTES

- Information relating to architectural, electrical, hydraulic, civil and other works as represented on EDAW documentation is for reference and EDAW co-ordination purpose only. All documentation to these and other works outside EDAW scope should be referred to the relevant consultants drawings and specification for details.
- This drawing should be read in conjunction with EDAW prepared specification and details. Should a conflict exist advice and direction should be sought from EDAW prior undertaking any construction works.
- All levels shown are in metres Australian Height Datum and dimensions in millimetres unless otherwise specified.

15.08.2007	C	Client Issue
05.06.2007	B	Client Issue
17.04.2007	A	Client Issue

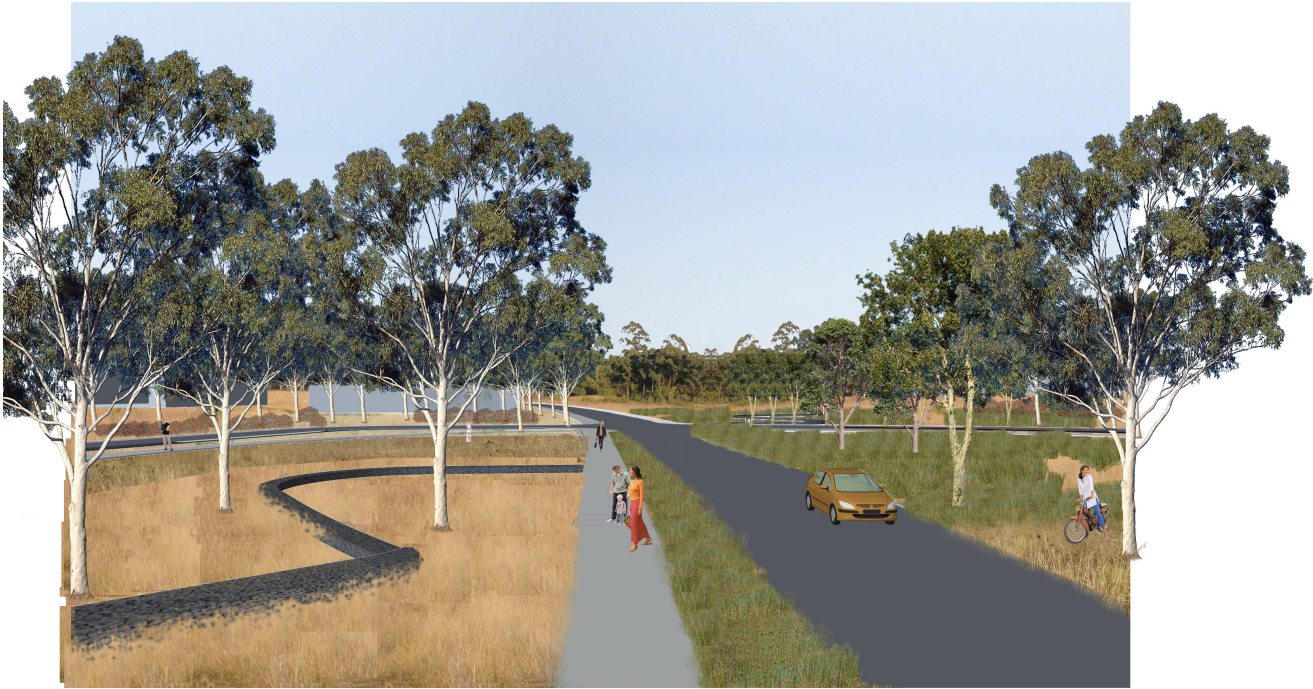
Project	Bungarribee
Client	Department of Planning NSW and Landcom
Drawing	Site entry

SYDNEY | MELBOURNE | ADELAIDE | AUSTIN | BOSTON | CHICAGO | DALLAS | DENVER | HOUSTON | LOS ANGELES | MANHATTAN | MIAMI | MINNEAPOLIS | NEW YORK | OMAHA | PHOENIX | PORTLAND | SAN ANTONIO | SAN FRANCISCO | SEATTLE | SINGAPORE | TAMPA | WASHINGTON DC

2-14 MOUNTAIN STREET ULTIMO NSW 2007
T 02 9212 3666 F 02 9212 4499 E SYDNEY@EDAW.COM

Scale	1 : 500 @ A1	SK28C
Project No.	06047	
Drawn	CY / MP	

A.B.N. 37 003 886 306 QA 2-12(1)N



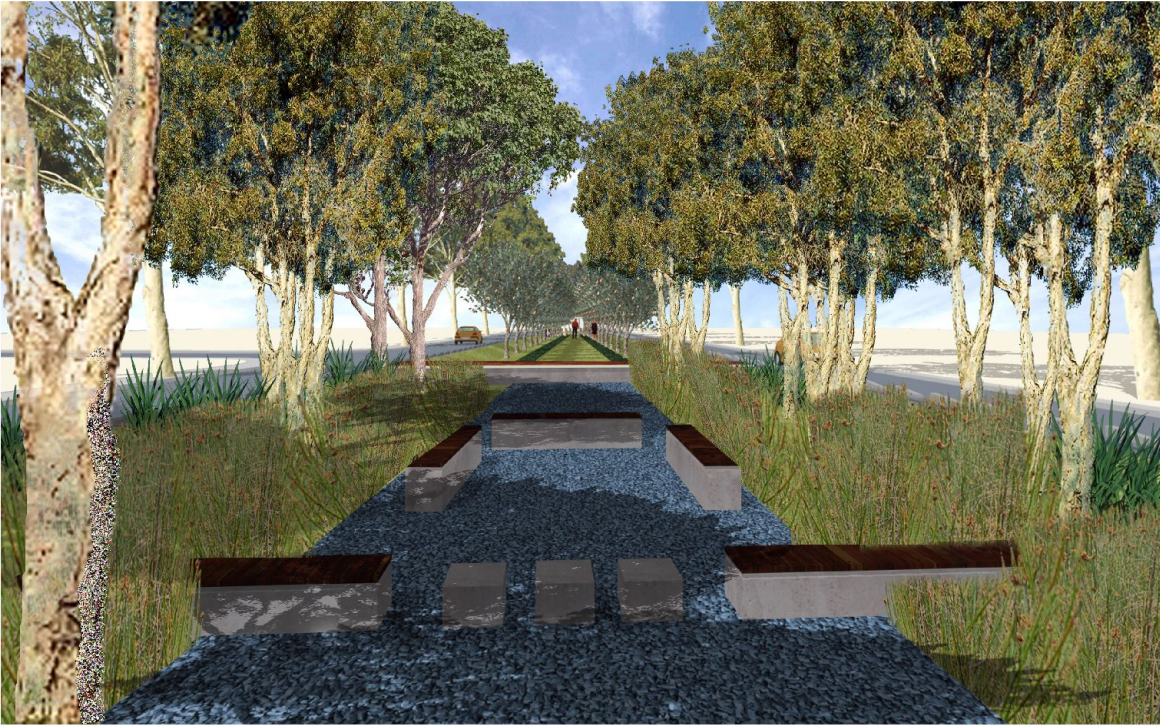
Perspective montage A entry from Doonside Road

Doonside - Residential

Department of Planning NSW and Landcom



Diagrammatic illustration of Eco-Park



Perspective montage A of Eco-Park during dry period



- Key**
- 1 Melaleuca grove stormwater detention area. Refer SK34 for further detail and Water Sensitive Urban Design Strategy.
 - 2 Seating area under Melaleuca grove. Refer perspective montage A and B
 - 3 Pedestrian crossing and weir
 - 4 Production based trees in bioretention systems
 - 5 Road side kerb designed to allow uniform runoff to bio-retention systems within the eco-parks.
 - 6 Turf detention and bio-filtration zone. Refer Water Sensitive Urban Design Strategy.
 - 7 Eucalyptus grove with gravel to base
 - 8 Existing contours at 1meter intervals
 - A Drainage to exit detention system to parklands. Refer Water Sensitive Urban Design Strategy.
 - B Melaleuca grove stormwater detention area. Angular gravel to base, Native grasses to graded zones to edge. Refer perspective montage A and B.
 - C All Eco-parks following natural grade of land draining towards Eastern Creek. Vegetation selection considers the Dry to Wet conditions.
 - D Production based trees, Utilising stormwater catchment and reuse. Water Sensitive Urban Design Strategy.
 - E Grove of Eucalyptus Spp. to bookend park and increase shade coverage.
 - F Stormwater storage

- NOTES**
- Information relating to architectural, electrical, hydraulic, civil and other works as represented on EDAW documentation is for reference and EDAW co-ordination purpose only. All documentation to these and other works outside EDAW scope should be referred to the relevant consultants drawings and specification for details.
 - This drawing should be read in conjunction with EDAW prepared specification and details. Should a conflict exist advice and direction should be sought from EDAW prior undertaking any construction works.
 - All levels shown are in metres Australian Height Datum and dimensions in millimetres unless otherwise specified.

29.11.2006 | Client Changes

Project	Doonside - Residential
Client	Department of Planning NSW and Landcom
Drawing	Eco-Parks

SYDNEY BRISBANE MELBOURNE SUNSHINE COAST		EDAW AECOM	
ASR ENRUP MIDDLE EAST USA		2-14 MOUNTAIN STREET ULTIMO NSW 2007 T 02 9212 3666 F 02 9212 4499 E SYDNEY@EDAW.COM	
Scale	Various	SK30B	
Project No.	06047		
Drawn	CY / MP		
A.B.N. 37 003 886 306		QA 2-12(1)N	



Diagrammatic illustration of Southern Creek Line following rain event



Southern Creek Line
1 : 500 @A1

Key Plan



Key

- 1 Ephemeral markers and play elements. Refer perspective montage A and B
- 2 Approximate extent of maximum water levels follow rain events, demarcated by red line. Refer Water Sensitive Urban Design Strategy. Refer perspective montage A and B
- 3 Nominal extent of creekline during dry periods. Refer Water Sensitive Urban Design Strategy. Refer perspective montage A and B
- 4 Creekline channel
- 5 High flow water distribution channel. Refer Water Sensitive Urban Design Strategy for details
- 6 Footpath
- 7 Pedestrian crossing and weir
- 8 Cycleway / shareway
- 9 Wetland plantings to detention area. Refer Water Sensitive Urban Design Strategy and typical plant species list
- 10 Existing contours at 1 metre intervals
- 11 Eucalyptus shade groves
- 12 Metaleuca groves
- 13 Maximum 1:8 grade to base of detention

NOTE: Plan depicts creekline following rain event. During dry periods water will recede to Creekline channel. (Refer perspective montage A and Water Sensitive Urban Design Strategy)

NOTES

1. Information relating to architectural, electrical, hydraulic, civil and other works as represented on EDAP documentation is for reference and EDAP co-ordination purpose only. All documentation to these and other works outside EDAP scope should be referred to the relevant consultants drawings and specification for details.
2. This drawing should be read in conjunction with EDAP prepared specification and details. Should a conflict exist advice and direction should be sought from EDAP prior undertaking any construction works.
3. All levels shown are in metres Australian Height Datum and dimensions in millimetres unless otherwise specified.

04.05.2007 C Client / Consultant changes
13.04.2007 B Client / Consultant changes
29.03.2007 A Client issue

Project Doonside - Residential
Client Department of Planning NSW and Landcom
Drawing Southern Creekline

EDAP AECOM
2-14 MOUNTAIN STREET ULTIMO NSW 2007
T 02 9212 3666 F 02 9212 4499 E SYDNEY@EDAP.COM
Scale Various
Project No. 06047 SK29C
Drawn CY / MP
A.B.N. 37 003 886 306 QA 2-12/1/04



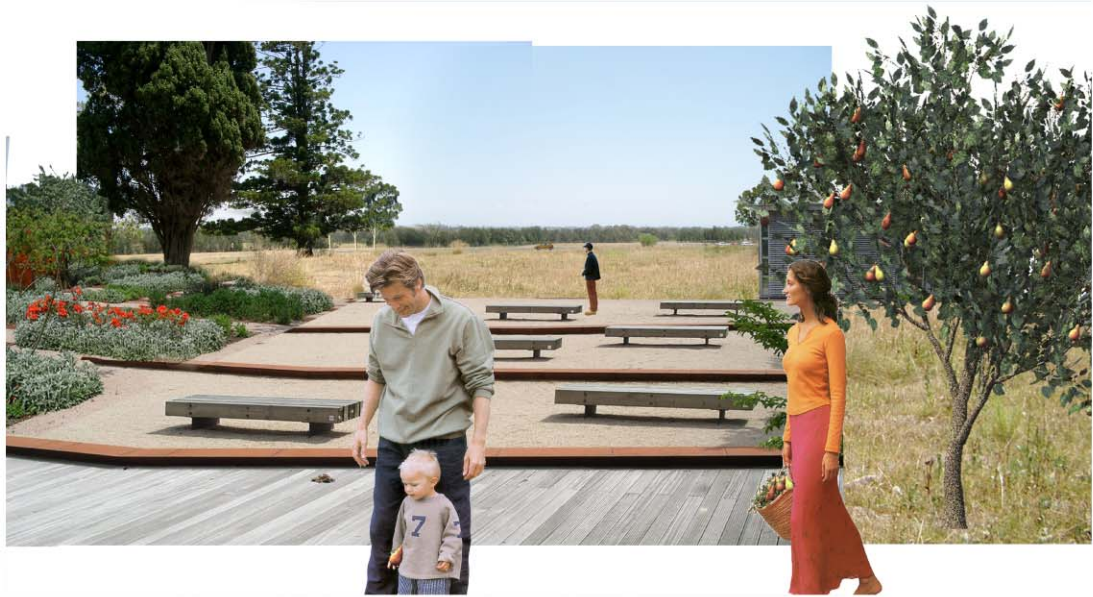
Perspective montage A of Southern Creek during dry period



Perspective montage B of Southern Creek following rain event. Water depth to conform with all safety standards

Doonside - Residential

Department of Planning NSW and Landcom



Perspective montage A: View from community area in Heritage park looking towards Heritage view park. Existing retained vegetation to middle and back ground. Potential additional plantings to referenced homestead history and former gardens. Public art work to be integrated into the design of landscape elements. Refer Public Art summary report for detail.



Perspective montage B looking from edge of main road over open space to parklands and beyond.



Heritage View Park
1 : 500 @A1

Key Plan



Key

- 1 Heritage area and community facilities. Refer Perspective Montage A and SK29
- 2 Turfed berm with 500mm level change. max 1 : 4 slope. Formalised steps leading to open kick about area
- 3 Open space / kick about area
- 4 Retaining wall with low level planting to base. Opportunity for public art work to be integrated into the design of landscape elements. Refer Public Art summary report for detail.
- 5 Pedestrian pathway leading to parklands. Maximum 1 : 20 slope
- 6 Seating area with views to parkland and Blue Mountains. Refer Perspective montage B
- 7 Turfed bank with 3000mm level change. Maximum slope 1 : 4
- 8 Linear planting of indigenous parkland plantings to attract fauna into subdivision. Species selection not to obstruct heritage views to greater landscape. Refer Perspective Montage B
- 9 Pedestrian pathway to parklands cafe and parklands
- 10 Copse street tree plantings
- 11 Parklands shareway path
- 12 Bungarribee Creek crossing though existing clearing in Swamp Oak vegetation
- 13 Existing 1 meter contours
- 14 Revegetation to Bungarribee Creek biodiversity corridor. Refer Parklands drawing set.
- 15 Existing vegetation
- 15 Line demarcates edge of Bungarribee Creek bio-diversity corridor

NOTES

1. Information relating to architectural, electrical, hydraulic, civil and other works as represented on EDAAW documentation is for reference and EDAAW co-ordination purpose only. All documentation to these and other works outside EDAAW scope should be referred to the relevant consultants drawings and specification for details.
2. This drawing should be read in conjunction with EDAAW prepared specification and details. Should a conflict exist advice and direction should be sought from EDAAW prior undertaking any construction works.
3. All levels shown are in metres Australian Height Datum and dimensions in millimetres unless otherwise specified.

30/07/07	D	Client Issue
04/06/07	C	Client Issue
27/05/07	B	Client Issue
11/4/07	A	Client Issue

Project	Bungarribee
Client	Department of Planning NSW and Landcom
Drawing	Heritage View Park

SYDNEY BRISBANE MELBOURNE SUNSHINE COAST	EDAW AECOM
2-14 MOUNTAIN STREET ULTIMO NSW 2007 T 02 9212 3666 F 02 9212 4499 E SYDNEY@EDAW.COM	
Scale	Various
Project No.	06047
Drawn	CY / MP
A.B.N. 37 003 886 306	QA 2-12(1)N