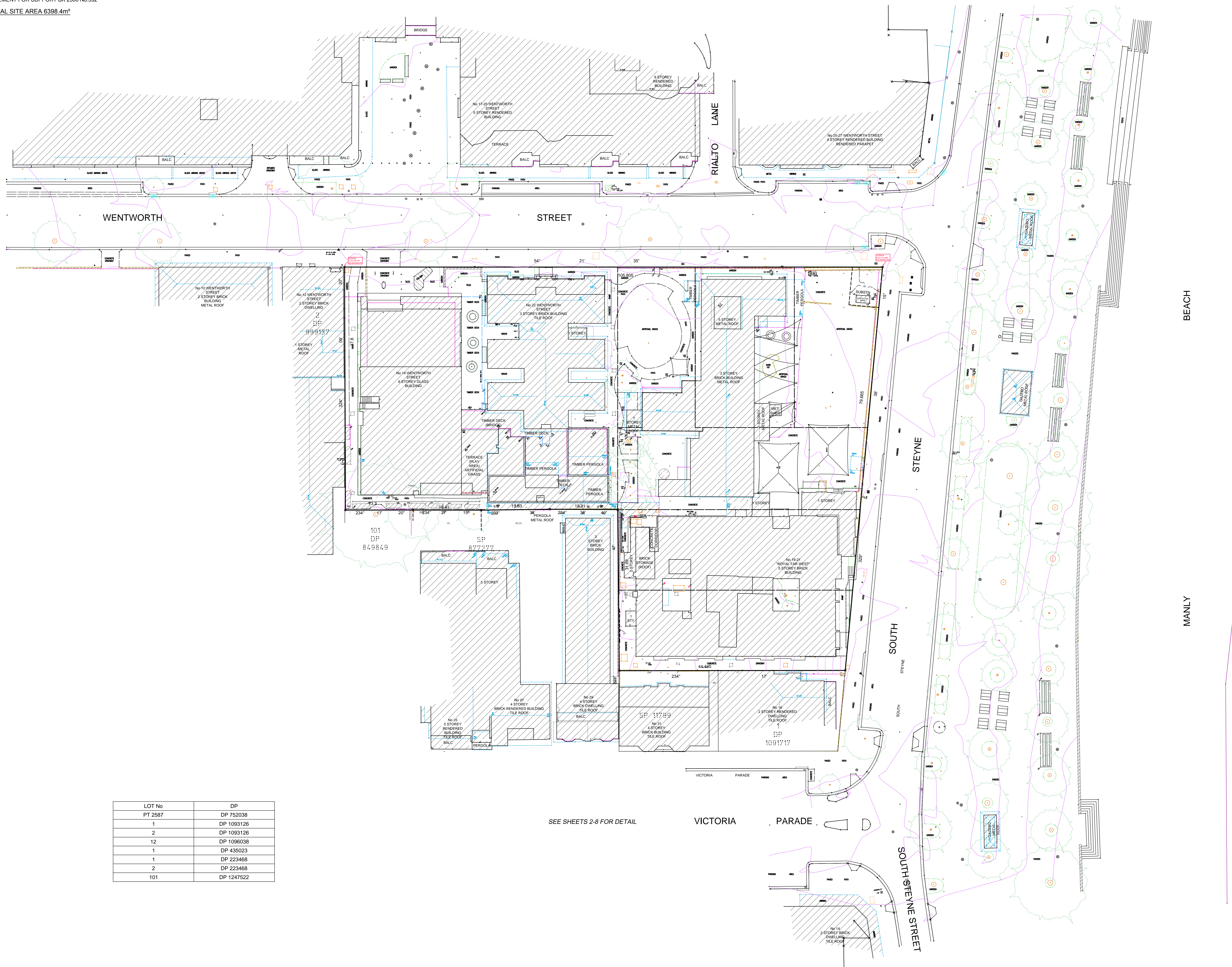


- (E) PROPOSED EASEMENT FOR ELECTRICITY AND OTHER PURPOSES 5.9 WIDE ()
 - (R) EASEMENT FOR MAINTENANCE 1.83 WIDE ()
 - (X) RESERVATIONS AND CONDITIONS IN THE CROWN GRANT(S)
 - (Y) RESERVATIONS AND CONDITIONS IN THE CROWN GRANT(S)
 - (Z) EASEMENT FOR SUPPORT BK 2500 No.392
- TOTAL SITE AREA 6398.4m²



LOT No	DP
PT 2587	DP 752038
1	DP 1093126
2	DP 1093126
12	DP 1096038
1	DP 435023
1	DP 223468
2	DP 223468
101	DP 1247522

SEE SHEETS 2-8 FOR DETAIL

ISSUE	DATE	AMENDMENT	BY
2	14.02.20	DESCRIPTIONS NOTES ADDED	DW/LS
3	5.03.20	PHOTO POINTS SHEETS ADDED	DW/PH
4	15.04.20	SERVICES ADDED	MA/PH

TYPICAL NOTES:

- ORDER OF LEVELS IN METERS AHD
- BOUNDARY AREAS OF SOLID WORK
- A SUITABLE BOUNDARY SURVEY HAS BEEN UNDERTAKEN
- BOUNDARIES SHOULD BE MARKED PRIOR TO ANY WORK BEING CARRIED OUT ON OR NEAR THE BOUNDARIES
- RENDERWORK OF IMPROVED AND DEMO TO BOUNDARIES IS INDICATED ONLY AND SPECIFIC DETAILS OF CRITICAL WALL REQUIRE FURTHER SURVEY
- SERVICES SHOWN ARE BASED ON VERIFIABLE SURFACE INDICATORS EXISTING AT THE DATE OF SURVEY AND THE RELEVANT SERVICE ENGINEER OF THE SERVICES INDICATED. ALL SERVICES MUST BE VERIFIED ON SITE PRIOR TO ANY WORK BEING UNDERTAKEN. VERIS AUSTRALIA PTY LTD BEARS NO RESPONSIBILITY FOR THE ACCURACY OR COMPLETENESS OF THE SERVICES SHOWN HEREON.
- HOUSE, GAZEBO & GUTTER HEIGHTS HAVE BEEN OBTAINED BY AN INDEPENDENT METHOD AND ARE ACCORDING TO DRAWING PURPOSES ONLY
- EXISTING BUILDINGS AND DIMENSIONS HAVE BEEN PLOTTED FOR INFORMATION PURPOSES ONLY AND SPECIFIC DETAILS OF CRITICAL WALL REQUIRE FURTHER SURVEY
- THE DIMENSION (W/ SPREAD (S) & HEIGHT (H)) OF EACH TREE IS INDICATIVE ONLY AND SPECIFIC DETAILS OF CRITICAL WALL REQUIRE FURTHER SURVEY
- CONTROLS ARE AN INDICATION OF THE 'DISPOSABLE' ONLY. SPREAD LEVELS SHOULD BE USED IF DETAILED DESIGN IS TO BE UNDERTAKEN
- CORRECT POSITION, METRE

LEGEND OF TYPICAL CODES

AL - ALIQUOT PIN	MS - METAL SURFACE
AR - ARCHITECTURAL RENOVATION	NAT - NATURAL SURFACE
BALC - BALCONY	OC - OCCULTATION
BAN - BOTTOM OF FINISH	OPT - OPTICS
BB - BOTTOM OF FINISH	PC - PAVEMENT CROSSING
BS - BOTTOM OF FINISH	PE - PEDESTAL CROSSING
BD - BOTTOM OF FINISH	PL - PERGOLA
BT - BOTTOM OF FINISH	PR - PERMANENT MARK
BN - BOTTOM OF FINISH	PP - POWER POLE
BR - BOTTOM OF FINISH	R - ROCK
BS - BOTTOM OF FINISH	RY - RAILWAY
BU - BOTTOM OF FINISH	RH - ROOF FLOOR
BW - BOTTOM OF FINISH	RN - REINFORCEMENT MARK
BY - BOTTOM OF FINISH	RS - CONCRETE RAIL
CA - CONCRETE	RW - ROOF FINISH
CB - BOTTOM OF FINISH	SC - STAIR
CD - BOTTOM OF FINISH	SH - SHADE
CE - BOTTOM OF FINISH	SH - SHIP
CF - BOTTOM OF FINISH	SI - SINK
CG - BOTTOM OF FINISH	SI - SINK
CH - BOTTOM OF FINISH	SI - SINK
CI - BOTTOM OF FINISH	SI - SINK
CL - BOTTOM OF FINISH	SI - SINK
CM - BOTTOM OF FINISH	SI - SINK
CO - BOTTOM OF FINISH	SI - SINK
CP - BOTTOM OF FINISH	SI - SINK
CQ - BOTTOM OF FINISH	SI - SINK
CR - BOTTOM OF FINISH	SI - SINK
CS - BOTTOM OF FINISH	SI - SINK
CT - BOTTOM OF FINISH	SI - SINK
CU - BOTTOM OF FINISH	SI - SINK
CV - BOTTOM OF FINISH	SI - SINK
CW - BOTTOM OF FINISH	SI - SINK
CX - BOTTOM OF FINISH	SI - SINK
CY - BOTTOM OF FINISH	SI - SINK
CZ - BOTTOM OF FINISH	SI - SINK
DA - BOTTOM OF FINISH	SI - SINK
DB - BOTTOM OF FINISH	SI - SINK
DC - BOTTOM OF FINISH	SI - SINK
DD - BOTTOM OF FINISH	SI - SINK
DE - BOTTOM OF FINISH	SI - SINK
DF - BOTTOM OF FINISH	SI - SINK
DG - BOTTOM OF FINISH	SI - SINK
DH - BOTTOM OF FINISH	SI - SINK
DI - BOTTOM OF FINISH	SI - SINK
DJ - BOTTOM OF FINISH	SI - SINK
DK - BOTTOM OF FINISH	SI - SINK
DL - BOTTOM OF FINISH	SI - SINK
DM - BOTTOM OF FINISH	SI - SINK
DN - BOTTOM OF FINISH	SI - SINK
DO - BOTTOM OF FINISH	SI - SINK
DP - BOTTOM OF FINISH	SI - SINK
DQ - BOTTOM OF FINISH	SI - SINK
DR - BOTTOM OF FINISH	SI - SINK
DS - BOTTOM OF FINISH	SI - SINK
DT - BOTTOM OF FINISH	SI - SINK
DU - BOTTOM OF FINISH	SI - SINK
DV - BOTTOM OF FINISH	SI - SINK
DW - BOTTOM OF FINISH	SI - SINK
DX - BOTTOM OF FINISH	SI - SINK
DY - BOTTOM OF FINISH	SI - SINK
DZ - BOTTOM OF FINISH	SI - SINK
EA - BOTTOM OF FINISH	SI - SINK
EB - BOTTOM OF FINISH	SI - SINK
EC - BOTTOM OF FINISH	SI - SINK
ED - BOTTOM OF FINISH	SI - SINK
EE - BOTTOM OF FINISH	SI - SINK
EF - BOTTOM OF FINISH	SI - SINK
EG - BOTTOM OF FINISH	SI - SINK
EH - BOTTOM OF FINISH	SI - SINK
EI - BOTTOM OF FINISH	SI - SINK
EJ - BOTTOM OF FINISH	SI - SINK
EK - BOTTOM OF FINISH	SI - SINK
EL - BOTTOM OF FINISH	SI - SINK
EM - BOTTOM OF FINISH	SI - SINK
EN - BOTTOM OF FINISH	SI - SINK
EO - BOTTOM OF FINISH	SI - SINK
EP - BOTTOM OF FINISH	SI - SINK
EQ - BOTTOM OF FINISH	SI - SINK
ER - BOTTOM OF FINISH	SI - SINK
ES - BOTTOM OF FINISH	SI - SINK
ET - BOTTOM OF FINISH	SI - SINK
EU - BOTTOM OF FINISH	SI - SINK
EV - BOTTOM OF FINISH	SI - SINK
EW - BOTTOM OF FINISH	SI - SINK
EX - BOTTOM OF FINISH	SI - SINK
EY - BOTTOM OF FINISH	SI - SINK
EZ - BOTTOM OF FINISH	SI - SINK

LEGEND OF TYPICAL SERVICES

CM - COMMUNICATIONS CABLE	RM - RECYCLED WATER
CON - CONCRETE	RR - RAIN WATER
CR - COMMUNICATIONS RIG	RS - RECYCLED WATER
CS - COMMUNICATIONS SERVICE	RU - RECYCLED WATER
CU - COMMUNICATIONS UNIT	RV - RECYCLED WATER
CV - COMMUNICATIONS VEHICLE	RW - RECYCLED WATER
CA - COMMUNICATIONS A	RY - RECYCLED WATER
CB - COMMUNICATIONS B	RA - RECYCLED WATER
CC - COMMUNICATIONS C	RB - RECYCLED WATER
CD - COMMUNICATIONS D	RC - RECYCLED WATER
CE - COMMUNICATIONS E	RD - RECYCLED WATER
CF - COMMUNICATIONS F	RE - RECYCLED WATER
CG - COMMUNICATIONS G	RF - RECYCLED WATER
CH - COMMUNICATIONS H	RG - RECYCLED WATER
CI - COMMUNICATIONS I	RH - RECYCLED WATER
CJ - COMMUNICATIONS J	RI - RECYCLED WATER
CK - COMMUNICATIONS K	RJ - RECYCLED WATER
CL - COMMUNICATIONS L	RL - RECYCLED WATER
CM - COMMUNICATIONS M	RM - RECYCLED WATER
CN - COMMUNICATIONS N	RN - RECYCLED WATER
CO - COMMUNICATIONS O	RO - RECYCLED WATER
CP - COMMUNICATIONS P	RP - RECYCLED WATER
CQ - COMMUNICATIONS Q	RQ - RECYCLED WATER
CR - COMMUNICATIONS R	RR - RECYCLED WATER
CS - COMMUNICATIONS S	RS - RECYCLED WATER
CT - COMMUNICATIONS T	RT - RECYCLED WATER
CU - COMMUNICATIONS U	RU - RECYCLED WATER
CV - COMMUNICATIONS V	RV - RECYCLED WATER
CW - COMMUNICATIONS W	RW - RECYCLED WATER
CX - COMMUNICATIONS X	RX - RECYCLED WATER
CY - COMMUNICATIONS Y	RY - RECYCLED WATER
CZ - COMMUNICATIONS Z	RZ - RECYCLED WATER

1. ALL UNDERGROUND SERVICE INFORMATION INCLUDING OF GENERAL POSITION AND SURFACE COVER OPTIONS NOTED ON THIS PLAN ARE APPROXIMATE ONLY

2. ALL UNDERGROUND SERVICE INFORMATION HAS BEEN OBTAINED FROM SERVICE AUTHORITY PLANS PROVIDED BY THE AUTHORITIES

3. THE LOCATION OF SERVICES BETWEEN SERVICE POINTS (SC INDICATED) HAVE BEEN SHOWN APPROXIMATELY ONLY USING THE SERVICE SHOWING AS PROVIDED. THE EXACT LOCATION OF THESE SERVICES BETWEEN THE SERVICE POINTS MUST BE VERIFIED PRIOR TO ANY EXCAVATION OR WORK BEING UNDERTAKEN & SOON AS PRACTICABLE

4. ALL COMMERCIAL ENGINEERS, PLUMBERS & PROJECT CONSULTANTS MUST CONTACT THE RELEVANT AUTHORITIES IN ACCORDANCE WITH STANDARD 'TAL BEFORE YOU DIG' PROCEDURES PRIOR TO UNDERTAKING ANY WORK WITHIN THE VICINITY OF THE SERVICES SHOWN TO AVOID THE POSITION OF THE SERVICES LINES

Liability limited by a scheme approved under Professional Standards Legislation

REDUCTION RATIO 1:250
0 2 4 6 8 10 12 14 16 18 20
LENGTHS ARE IN METRES

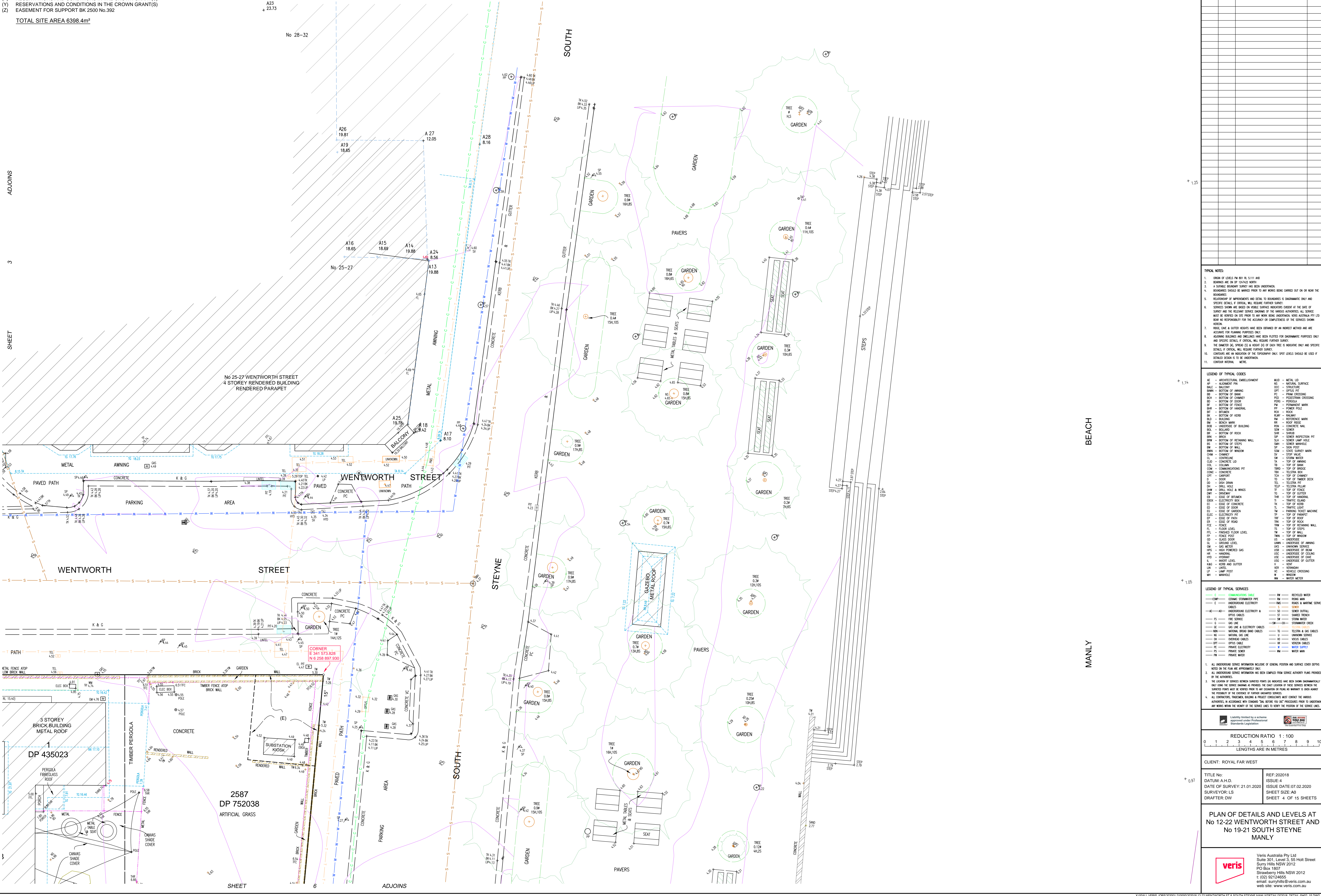
CLIENT: ROYAL FAR WEST

TITLE No: REF:202018
DATE OF SURVEY: 21.01.2020 ISSUE: 4
DATE OF SURVEY: 21.01.2020 ISSUE: 4
SURVEYOR: LS SHEET DATE: 07.02.2020
DRAFTER: DW SHEET SIZE: A0 SHEET 1 OF 15 SHEETS

PLAN OF DETAILS AND LEVELS AT No 12-22 WENTWORTH STREET AND No 19-21 SOUTH STEYNE MANLY

Veris Australia Pty Ltd
Suite 301, Level 3, 55 Holt Street
Surry Hills NSW 2157
PO Box 1807
Surry Hills NSW 2157
t: (02) 9272-4655
e: surryhills@veris.com.au
web site: www.veris.com.au

- (E) PROPOSED EASEMENT FOR ELECTRICITY AND OTHER PURPOSES 5.9 WIDE ()
 - (R) EASEMENT FOR MAINTENANCE 1.83 WIDE ()
 - (X) RESERVATIONS AND CONDITIONS IN THE CROWN GRANT(S)
 - (Y) RESERVATIONS AND CONDITIONS IN THE CROWN GRANT(S)
 - (Z) EASEMENT FOR SUPPORT BK 2500 No.392
- TOTAL SITE AREA 6398.4m²



ISSUE	DATE	AMENDMENT	BY
2	14.02.20	DESCRIPTIONS NOTES ADDED	DW/LS
3	03.03.20	PHOTO POINTS SHEETS ADDED	LS/DW
4	15.04.20	SERVICES ADDED	MW/DW

- TYPICAL NOTES:**
1. ORDER OF LEVELS IN METRE TO 5.111 AND
 2. BOUNDARY ARE AS SHOWN UNLESS NOTED OTHERWISE
 3. A SUFFICIENT BOUNDARY SURVEY HAS BEEN UNDERTAKEN
 4. BOUNDARIES SHOULD BE MARKED PRIOR TO ANY WORK BEING CARRIED OUT ON OR NEAR THE BOUNDARIES
 5. RELATIONSHIP OF IMPROVEMENTS AND DETAIL TO BOUNDARIES IS INDICATED ONLY AND SPECIFIC DETAILS OF DETAIL WILL REQUIRE FURTHER SURVEY
 6. SERVICES SHOWN ARE BASED ON VISIBLE SURFACE INDICATORS EXISTING AT THE DATE OF SURVEY AND THE RELEVANT SERVICE ENGINEER OF THE SERVICES INDICATED. ALL SERVICE MUST BE CHECKED ON SITE PRIOR TO ANY WORK BEING UNDERTAKEN. VERIS AUSTRALIA PTY LTD BEARS NO RESPONSIBILITY FOR THE ACCURACY OR COMPLETENESS OF THE SERVICES SHOWN HEREON.
 7. HOUSE DATE & OUTER HEIGHTS HAVE BEEN OBTAINED BY AN INDEPENDENT METHOD AND ARE ACCORDING TO PLANNING PURPOSES ONLY
 8. EXISTING BUILDINGS AND DIMENSIONS HAVE BEEN PLOTTED FOR DIMENSIONAL PURPOSES ONLY AND SPECIFIC DETAILS OF DETAIL WILL REQUIRE FURTHER SURVEY
 9. THE DIMETER (Ø) SPREAD (S) & HEIGHT (H) OF EACH TREE IS INDICATED ONLY AND SPECIFIC DETAILS OF DETAIL WILL REQUIRE FURTHER SURVEY
 10. COORDINATE ARE IN METRE TO THE TOPOGRAHY ONLY. SPOT LEVELS SHOULD BE USED IF DETAILED DESIGN IS TO BE UNDERTAKEN
 11. CONSULT ARCHITECT

LEGEND OF TYPICAL CODES

AL	ARCHITECTURAL EMBELLISHMENT	MED	METAL LEE
AP	ALUMINIUM FINISH	MS	MASONRY SURFACE
BALC	BALCONY	OCC	STRUCTURE
BAN	BOTTOM OF AWNING	OFT	OPTIC FIBRE
BB	BOTTOM OF BRICK	PC	PERMANENT CROSSING
BS	BOTTOM OF CHIMNEY	PEL	PERMANENT CROSSING
BD	BOTTOM OF DOOR	PLG	PERGOLA
BF	BOTTOM OF FENCE	PM	PERMANENT MARK
BH	BOTTOM OF HORIZONTAL	PP	POWER POLE
BSH	BOTTOM OF SHED	ROCK	ROCK
BR	BOTTOM OF ROOF	RUM	RAUMBER
BSB	BOTTOM OF BRICK	RM	REFERENCE MARK
BW	BOTTOM OF WALL	RPF	ROOF FLOOR
BSB	BOTTOM OF BRICK	RON	CONCRETE RAIL
BW	BOTTOM OF WALL	RS	ROOF
BSB	BOTTOM OF BRICK	SR	STRUB
BSB	BOTTOM OF BRICK	SRP	SEWER INSPECTION PIT
BSB	BOTTOM OF BRICK	SRH	SEWER LAMP HEAD
BSB	BOTTOM OF BRICK	SRV	SEWER VALVE
BSB	BOTTOM OF BRICK	SP	SPAL POST
BSB	BOTTOM OF BRICK	SPW	STOP VALVE
BSB	BOTTOM OF BRICK	SPW	STOP VALVE
BSB	BOTTOM OF BRICK	SPW	STOP VALVE
BSB	BOTTOM OF BRICK	SPW	STOP VALVE

LEGEND OF TYPICAL SERVICES

C	COMMUNICATIONS CABLE	RM	RECYCLED WATER
CMW	COMMUNICATIONS WIRE	RM	RECYCLED WATER
E	UNDERGROUND ELECTRICITY	RM	RECYCLED WATER
G	GAS	S	SKIN
HC	HOIST CABLE	SI	SEWER OUTFALL
HT	HIGH TENSION	SI	SEWER TRENCH
HT	HIGH TENSION	SI	SEWER TRENCH
HT	HIGH TENSION	SI	SEWER TRENCH
HT	HIGH TENSION	SI	SEWER TRENCH
HT	HIGH TENSION	SI	SEWER TRENCH

1. ALL UNDERGROUND SERVICE INFORMATION INCLUDING OF GENERAL POSITION AND SERVICE COVER DEPTH MUST BE IN THE PLAN AND APPROPRIATELY MARKED
2. ALL UNDERGROUND SERVICE INFORMATION HAS BEEN OBTAINED FROM SERVICE AUTHORITY PLANS PROVIDED BY THE AUTHORITIES
3. THE LOCATION OF SERVICES BETWEEN SPANNED POINTS (Ø) INDICATED HAVE BEEN SHOWN DOCUMENTARILY ONLY USING THE SERVICE ENGINEER'S PROVIDED. THE EXACT LOCATION OF THESE SERVICES BETWEEN THE SPANNED POINTS MUST BE VERIFIED PRIOR TO ANY EXCAVATION OR WORK BEING UNDERTAKEN AND MUST BE THE PROPERTY OF THE SERVICE AUTHORITY PROVIDER
4. ALL CONTRACTORS, TRADESMEN, INCLUDING A PROJECT CONSULTANT MUST CONTACT THE RELEVANT AUTHORITIES IN ACCORDANCE WITH STANDARD T&E BEFORE ANY 'AS' PROCEDURES PRIOR TO UNDERGROUND WORK BEING UNDERTAKEN TO VERIFY THE POSITION OF THE SERVICE LINES

REDUCTION RATIO 1 : 100

0 1 2 3 4 5 6 7 8 9 10

LENGTHS ARE IN METRES

CLIENT: ROYAL FAR WEST

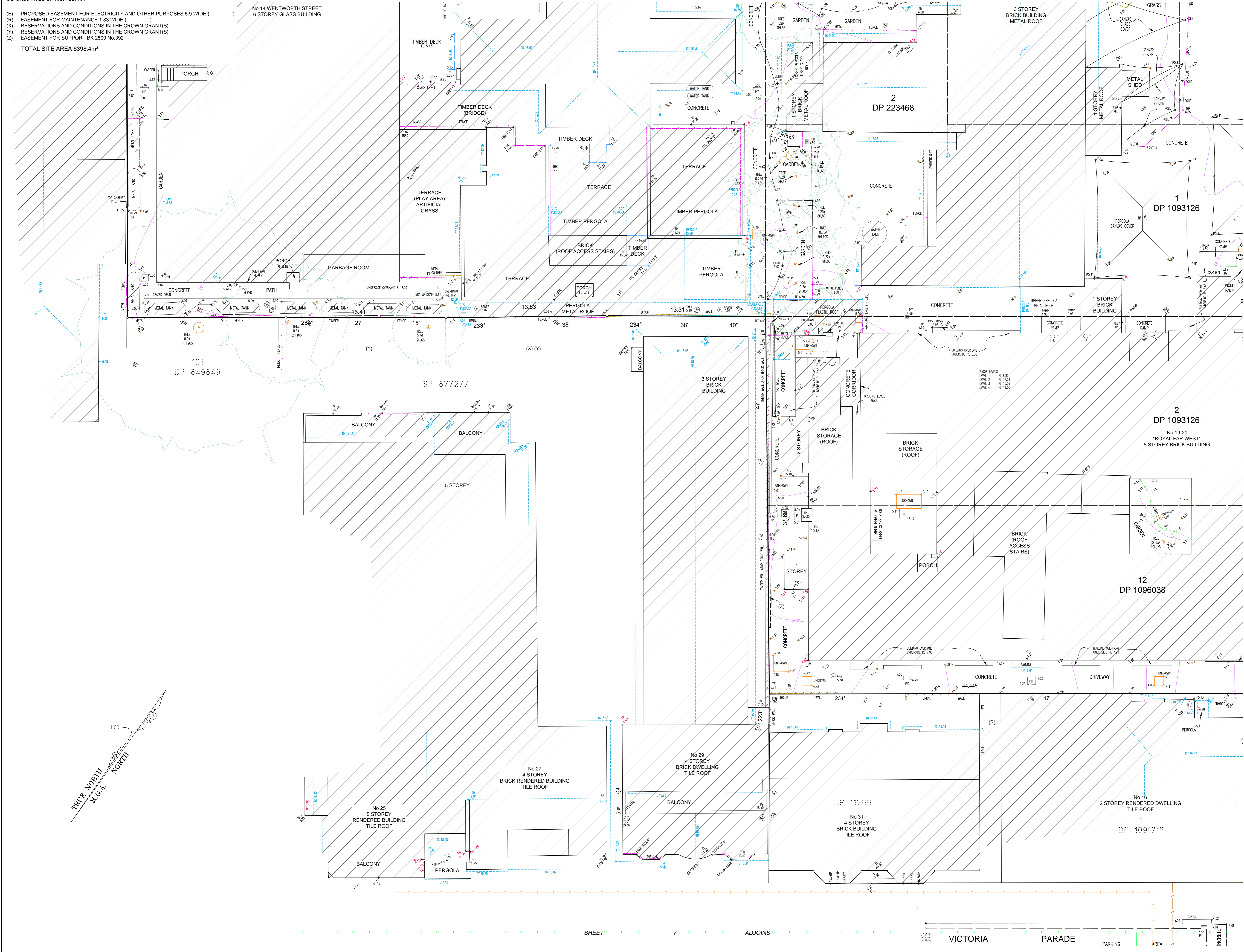
TITLE No: REF:202018
 DATE OF SURVEY: 21.01.2020 ISSUE: 4
 SURVEYOR: L.S. ISSUING DATE: 07.02.2020
 DRAFTER: DW SHEET SIZE: A0 SHEET 4 OF 15 SHEETS

PLAN OF DETAILS AND LEVELS AT No 12-22 WENTWORTH STREET AND No 19-21 SOUTH STEYNE MANLY

Veris Australia Pty Ltd
 Suite 501, Level 5, 55 Holt Street
 Surry Hills NSW 2012
 PO Box 1807
 Strathfield NSW 1515
 t: (02) 9272-4655
 e: mail: surryhills@veris.com.au
 web: www.veris.com.au

- (E) PROPOSED EASEMENT FOR ELECTRICITY AND OTHER PURPOSES 5.9 WIDE ()
 - (R) EASEMENT FOR MAINTENANCE 1.83 WIDE ()
 - (X) RESERVATIONS AND CONDITIONS IN THE CROWN GRANT(S)
 - (Y) RESERVATIONS AND CONDITIONS IN THE CROWN GRANT(S)
 - (Z) EASEMENT FOR SUPPORT BK 2500 No.392
- TOTAL SITE AREA 6398.4m²

No 14 WENTWORTH STREET
6 STOREY GLASS BUILDING



ISSUE	DATE	AMENDMENT	BY
1	14.02.20	DESCRIPTION NOTES ADDED	DW/LS
2	03.03.20	PHOTO POINTS SHEETS ADDED	LS/PH
3	15.04.20	SERVICES ADDED	MW/PH

- TYPICAL NOTES:
- ORDER OF LEVELS IN SET RL 5.111 AND BEARING ARE AS SHOWN UNLESS OTHERWISE STATED.
 - A SUFFICIENT BOUNDARY SURVEY HAS BEEN UNDERTAKEN.
 - BOUNDARIES SHOULD BE MARKED PRIOR TO ANY WORK BEING CARRIED OUT ON OR NEAR THE BOUNDARIES.
 - REVISIONS TO THIS PLAN ARE SHOWN BY DIMENSIONED CHANGES ONLY AND SPECIFIC DETAILS OF CHANGES WILL BE PROVIDED SEPARATELY.
 - SERVICES SHOWN ARE BASED ON AVAILABLE SURVEY INFORMATION EXISTING AT THE DATE OF SURVEY AND THE RELEVANT SERVICE ENGINEER OF THE AGENCIES INVOLVED. ALL SERVICES MUST BE VERIFIED ON SITE PRIOR TO ANY WORK BEING UNDERTAKEN. VERIS AUSTRALIA PTY LTD DOES NOT ACCEPT RESPONSIBILITY FOR THE ACCURACY OR COMPLETENESS OF THE SERVICES SHOWN HEREIN.
 - ROOF, EAVE & GUTTER HEIGHTS HAVE BEEN OBTAINED BY AN INDEPENDENT METHOD AND ARE ACCORDING TO DRAWING PURPOSES ONLY.
 - EXISTING BUILDINGS AND DIMENSIONS HAVE BEEN PLOTTED FOR INFORMATIONAL PURPOSES ONLY AND SPECIFIC DETAILS OF CHANGES WILL BE PROVIDED SEPARATELY.
 - THE DIMENSIONAL SPREAD (S) & HEAD (H) OF EACH TREE IS INDICATED ONLY AND SPECIFIC DETAILS OF CHANGES WILL BE PROVIDED SEPARATELY.
 - CONTIGUOUS AREAS IN THE VICINITY OF THE PROPOSED WORK ONLY: SPOT LEVELS SHOULD BE USED IF DETAILED DESIGN IS TO BE UNDERTAKEN.
 - CONTOUR INTERVAL: 0.1M

LEGEND OF TYPICAL CODES

AC	ARCHITECTURAL EMBELLISHMENT	MED	METAL LED
AL	ALIGNMENT PIN	MS	NATURAL SURFACE
AN	BALCONY	OCC	STRUCTURE
AP	BOTTOM OF ANNING	OPT	OPTIC FIBRE
BB	BOTTOM OF BRICK	PC	PERM CROSSING
BC	BOTTOM OF CHIMNEY	PEL	PERCESSION CROSSING
BD	BOTTOM OF DOOR	PERG	PERGOLA
BE	BOTTOM OF EAVE	PI	PERMANENT MARK
BF	BOTTOM OF FENCE	PK	POWER POLE
BG	BOTTOM OF GARDEN	RO	ROCK
BH	BOTTOM OF KERB	RL	RAILWAY
BI	BOTTOM OF BALCONY	RM	RENDERED MASONRY
BJ	BOTTOM OF UNDERSIDE OF BUILDING	ROF	ROOF FLOOR
BK	BOTTOM OF ROOF	RON	CONCRETE RAIL
BL	BOTTOM OF RETAINING WALL	RS	RENDERED SURFACE
BM	BOTTOM OF STEPS	SLH	SEWER LAMP HOLE
BN	BOTTOM OF WINDOW	SM	SEWER MANHOLE
BO	BOTTOM OF WALL	SP	SEWER POSITION
BP	BOTTOM OF PERGOLA	SV	STOP VALVE
BR	BOTTOM OF BRICK	SW	STOP VALVE
BS	BOTTOM OF BRICK	TA	TOP OF ANNING
BT	BOTTOM OF BRICK	TB	TOP OF BRICK
BU	BOTTOM OF BRICK	TC	TOP OF CHIMNEY
CV	CONCRETE	TD	TOP OF DRIVEWAY
CD	CONCRETE	TE	TOP OF TERRACE
CE	CONCRETE	TF	TOP OF FENCE
CF	CARPENTRY	TH	TOP OF HANDRAIL
CG	CHIMNEY	TI	TOP OF TERRACE
CH	CHIMNEY	TL	TOP OF TERRACE
CI	CONCRETE	TM	TOP OF TERRACE
CJ	CONCRETE	TO	TOP OF TERRACE
CK	CONCRETE	TR	TOP OF TERRACE
CL	CONCRETE	TS	TOP OF TERRACE
CM	CONCRETE	TU	TOP OF TERRACE
CN	CONCRETE	TV	TOP OF TERRACE
CO	CONCRETE	TW	TOP OF TERRACE
CP	CONCRETE	TX	TOP OF TERRACE
CQ	CONCRETE	TY	TOP OF TERRACE
CR	CONCRETE	TZ	TOP OF TERRACE
CS	CONCRETE	U	UNKNOWN
CT	CONCRETE	V	VOID
CU	CONCRETE	VA	VEHICLE CROSSING
CV	CONCRETE	VB	VEHICLE CROSSING
CW	CONCRETE	VC	VEHICLE CROSSING
CX	CONCRETE	VD	VEHICLE CROSSING
CY	CONCRETE	VE	VEHICLE CROSSING
CZ	CONCRETE	VF	VEHICLE CROSSING
CA	CONCRETE	VG	VEHICLE CROSSING
CB	CONCRETE	VH	VEHICLE CROSSING
CC	CONCRETE	VI	VOID
CD	CONCRETE	VJ	VOID
CE	CONCRETE	VK	VOID
CF	CONCRETE	VL	VOID
CG	CONCRETE	VM	VOID
CH	CONCRETE	VO	VOID
CI	CONCRETE	VP	VOID
CJ	CONCRETE	VQ	VOID
CK	CONCRETE	VR	VOID
CL	CONCRETE	VS	VOID
CM	CONCRETE	VT	VOID
CN	CONCRETE	VU	VOID
CO	CONCRETE	VV	VOID
CP	CONCRETE	VO	VOID
CQ	CONCRETE	VP	VOID
CR	CONCRETE	VQ	VOID
CS	CONCRETE	VR	VOID
CT	CONCRETE	VS	VOID
CU	CONCRETE	VT	VOID
CV	CONCRETE	VU	VOID
CW	CONCRETE	VO	VOID
CX	CONCRETE	VP	VOID
CY	CONCRETE	VQ	VOID
CZ	CONCRETE	VR	VOID

LEGEND OF TYPICAL SERVICES

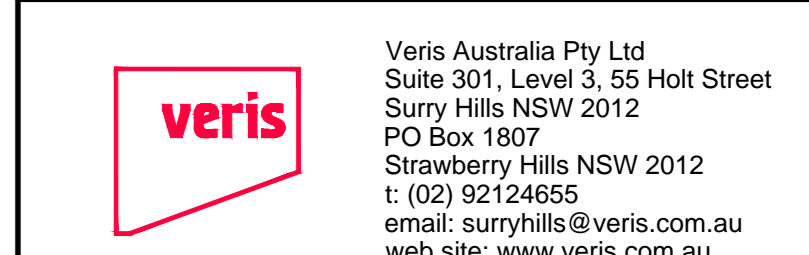
CM	COMMUNICATIONS CABLE	RM	RECYCLED WATER
CO	COSMETIC STAINLESS STEEL	RS	RENDERED MASONRY
CU	UNDERGROUND ELECTRICITY	SC	SEWER & WASTEWATER SERVICES
CV	UNDERGROUND ELECTRICITY	SE	SEWER
CW	UNDERGROUND ELECTRICITY	SO	SEWER OUTFALL
CX	UNDERGROUND ELECTRICITY	ST	SHARED TRENCH
CY	UNDERGROUND ELECTRICITY	SW	SEWER MANHOLE
CZ	UNDERGROUND ELECTRICITY	STW	STONEMASON CHECK
CA	GAS LINE & ELECTRICITY CABLES	TO	TELSTRA & GAS CABLES
CB	NATURAL BRICK BOND CEMENT	TR	TELSTRA & GAS CABLES
CC	NATURAL BRICK BOND CEMENT	TS	TELSTRA & GAS CABLES
CD	NATURAL BRICK BOND CEMENT	TU	TELSTRA & GAS CABLES
CE	NATURAL BRICK BOND CEMENT	TV	TELSTRA & GAS CABLES
CF	NATURAL BRICK BOND CEMENT	TV	TELSTRA & GAS CABLES
CG	NATURAL BRICK BOND CEMENT	TV	TELSTRA & GAS CABLES
CH	NATURAL BRICK BOND CEMENT	TV	TELSTRA & GAS CABLES
CI	NATURAL BRICK BOND CEMENT	TV	TELSTRA & GAS CABLES
CJ	NATURAL BRICK BOND CEMENT	TV	TELSTRA & GAS CABLES
CK	NATURAL BRICK BOND CEMENT	TV	TELSTRA & GAS CABLES
CL	NATURAL BRICK BOND CEMENT	TV	TELSTRA & GAS CABLES
CM	NATURAL BRICK BOND CEMENT	TV	TELSTRA & GAS CABLES
CN	NATURAL BRICK BOND CEMENT	TV	TELSTRA & GAS CABLES
CO	NATURAL BRICK BOND CEMENT	TV	TELSTRA & GAS CABLES
CP	NATURAL BRICK BOND CEMENT	TV	TELSTRA & GAS CABLES
CQ	NATURAL BRICK BOND CEMENT	TV	TELSTRA & GAS CABLES
CR	NATURAL BRICK BOND CEMENT	TV	TELSTRA & GAS CABLES
CS	NATURAL BRICK BOND CEMENT	TV	TELSTRA & GAS CABLES
CT	NATURAL BRICK BOND CEMENT	TV	TELSTRA & GAS CABLES
CU	NATURAL BRICK BOND CEMENT	TV	TELSTRA & GAS CABLES
CV	NATURAL BRICK BOND CEMENT	TV	TELSTRA & GAS CABLES
CW	NATURAL BRICK BOND CEMENT	TV	TELSTRA & GAS CABLES
CX	NATURAL BRICK BOND CEMENT	TV	TELSTRA & GAS CABLES
CY	NATURAL BRICK BOND CEMENT	TV	TELSTRA & GAS CABLES
CZ	NATURAL BRICK BOND CEMENT	TV	TELSTRA & GAS CABLES

- ALL UNDERGROUND SERVICE INFORMATION INCLUDING OF GENERAL POSITION AND SURFACE COVER OPTIONS MUST BE IN THE PLAN AND APPROVED ONLY.
- ALL UNDERGROUND SERVICE INFORMATION HAS BEEN COMPILED FROM SERVICE AUTHORITY PLANS PROVIDED BY THE AUTHORITIES.
- THE LOCATION OF SERVICES BETWEEN SERVICE POINTS (AS INDICATED) HAS BEEN SHOWN APPROXIMATELY ONLY USING THE SERVICE ENGINEER'S RECORDS. THE EXACT LOCATION OF THESE SERVICES BETWEEN THE SERVICE POINTS MUST BE VERIFIED PRIOR TO ANY EXCAVATION OR WORKING IN THE MANNER & AREA SHOWN.
- ALL CONDUITS, TRENCHES, BUNDLES & SERVICE CONDUITS MUST BE MARKED WITH THE SERVICE AUTHORITY'S MARKING IN ACCORDANCE WITH STANDARD 'AS/NZS 1851' PROCEDURES PRIOR TO UNDERMINING OR WORKING WITHIN THE VICINITY OF THE SERVICE LINES TO AVOID THE POSITION OF THE SERVICE LINES.

REDUCTION RATIO 1:100
0 1 2 3 4 5 6 7 8 9 10
LENGTHS ARE IN METRES

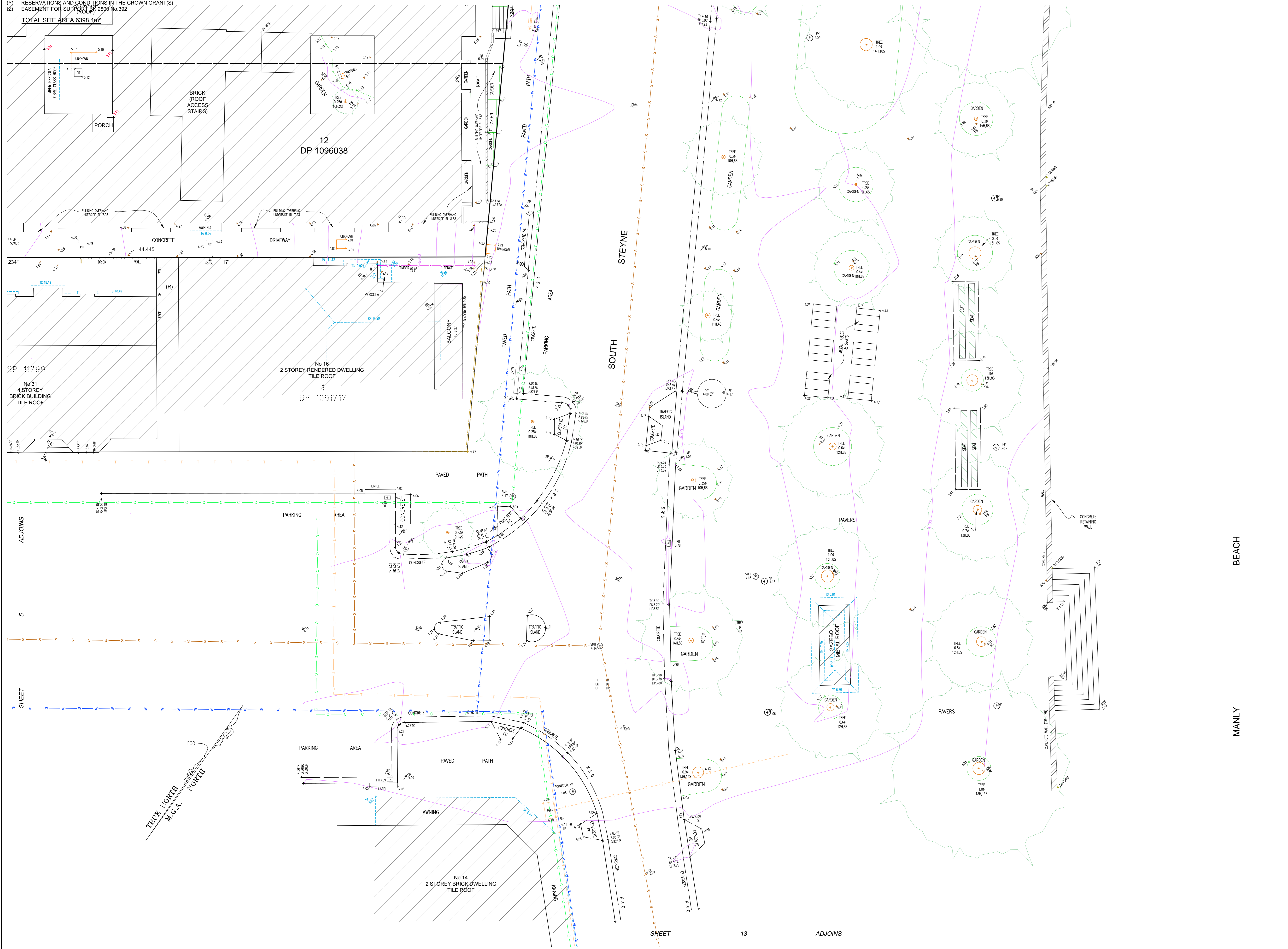
CLIENT: ROYAL FAR WEST
TITLE No: REF:202018
DATE OF SURVEY: 21.01.2020
DATE OF SURVEY: 21.01.2020
SURVEYOR: LS
ISSUE DATE: 07.02.2020
DRAFTER: DW
SHEET SIZE: A0
SHEET 5 OF 15 SHEETS

PLAN OF DETAILS AND LEVELS AT
No 12-22 WENTWORTH STREET AND
No 19-21 SOUTH STEYNE
MANLY



- (E) PROPOSED EASEMENT FOR ELECTRICITY AND OTHER PURPOSES 5.9 WIDE ()
- (R) EASEMENT FOR MAINTENANCE 1.83 WIDE ()
- (X) RESERVATIONS AND CONDITIONS IN THE CROWN GRANT(S)
- (Y) RESERVATIONS AND CONDITIONS IN THE CROWN GRANT(S)
- (Z) EASEMENT FOR SUPPLY OF WATER

TOTAL SITE AREA 6398.4m²



ISSUE	DATE	AMENDMENT	BY
2	14.02.20	DESCRIPTIVE NOTES ADDED	DW/LS
3	03.03.20	PHOTO POINTS SHEETS ADDED	LS/PH
4	15.04.20	SERVICES ADDED	MA/PH

- TYPICAL NOTES:**
- ORDER OF LEVELS IN NOT RL 5.111 AND
 - BOUNDARY ARE ON OF SURVEY WORK
 - A SEPARATE BOUNDARY SURVEY HAS BEEN UNDERTAKEN
 - BOUNDARIES SHOULD BE MARKED PRIOR TO ANY WORK BEING CARRIED OUT ON OR NEAR THE BOUNDARIES
 - RELATIONSHIP OF IMPROVEMENTS AND DEMO TO BOUNDARIES IS DIMENSIONAL ONLY AND SPECIFIC DETAILS OF DETAILS WILL REQUIRE FURTHER SURVEY
 - SERVICES SHOWN ARE BASED ON VISIBLE SURFACE INDICATORS EXCEPT AT THE DATE OF SURVEY AND THE RELEVANT SERVICE ENGINEER OF THE SERVICES ADJACENT. ALL SERVICE MUST BE VERIFIED ON SITE PRIOR TO ANY WORK BEING UNDERTAKEN. VERIS AUSTRALIA PTY LTD DOES NOT TAKE RESPONSIBILITY FOR THE ACCURACY OR COMPLETENESS OF THE SERVICES SHOWN HEREIN.
 - ROOF, GATE & GUTTER HEIGHTS HAVE BEEN OBTAINED BY AN INDEPENDENT METHOD AND ARE ACCORDING TO DRAWING PURPOSES ONLY
 - ADJOINING BUILDINGS AND DIMENSIONS HAVE BEEN PLOTTED FOR DIMENSIONAL PURPOSES ONLY AND SPECIFIC DETAILS OF DETAILS WILL REQUIRE FURTHER SURVEY
 - THE DIMENSION (AL SPREAD IS) & HEIGHT (H) OF EACH TREE IS INDICATIVE ONLY AND SPECIFIC DETAILS OF DETAILS WILL REQUIRE FURTHER SURVEY
 - CONTIGUOUS ARE IN INDICATION OF THE DIMENSIONS ONLY. SPREAD LEVELS SHOULD BE USED IF DETAILED DESIGN IS TO BE UNDERTAKEN
 - CONDUIT ROUTING, NOTE

LEGEND OF TYPICAL CODES

AC	ARCHITECTURAL EMBELLISHMENT	MED	METAL LED
AL	ALUMINIUM FIN	MS	NATURAL SURFACE
BALC	BALCONY	OCC	STRUCTURE
BAW	BOTTOM OF AWNING	OPT	OPTIC FIBRE
BB	BOTTOM OF BRICK	PC	PAVING CROSSING
BC	BOTTOM OF CHIMNEY	PF	PERFORATED CROSSING
BD	BOTTOM OF DOOR	PERG	PERGOLA
BF	BOTTOM OF FENCE	PM	PERMANENT MARK
BR	BOTTOM OF BRICK	PP	POWER POLE
BS	BOTTOM OF BRICK	ROCK	ROCK
BT	BOTTOM OF TILES	RYL	RAILWAY
BU	BOTTOM OF UNDERPASS	RM	REINFORCED MARK
BUW	BOTTOM OF UNDERPASS	ROF	ROOF FLOOR
BUW	BOTTOM OF UNDERPASS	RON	CONCRETE RAIL
BUW	BOTTOM OF UNDERPASS	ROV	ROOF VALVE
BUW	BOTTOM OF UNDERPASS	SR	SHRUB
BUW	BOTTOM OF UNDERPASS	SRP	SEWER INSPECTION PIT
BUW	BOTTOM OF UNDERPASS	SLH	SEWER LAMP HOLE
BUW	BOTTOM OF UNDERPASS	SM	SEWER MANHOLE
BUW	BOTTOM OF UNDERPASS	SP	STOP POST
BUW	BOTTOM OF UNDERPASS	SV	STOP VALVE
BUW	BOTTOM OF UNDERPASS	TA	TOP OF AWNING
BUW	BOTTOM OF UNDERPASS	TB	TOP OF BRICK
BUW	BOTTOM OF UNDERPASS	TRB	TOP OF BRIDGE
BUW	BOTTOM OF UNDERPASS	TRC	TOP OF CURB
BUW	BOTTOM OF UNDERPASS	TRD	TOP OF DRIVEWAY
BUW	BOTTOM OF UNDERPASS	TRF	TOP OF FENCE
BUW	BOTTOM OF UNDERPASS	TRG	TOP OF GARDEN
BUW	BOTTOM OF UNDERPASS	TRH	TOP OF HANDRAIL
BUW	BOTTOM OF UNDERPASS	TRK	TOP OF KERB
BUW	BOTTOM OF UNDERPASS	TRM	TOP OF MANTLE
BUW	BOTTOM OF UNDERPASS	TRN	TOP OF NAIL
BUW	BOTTOM OF UNDERPASS	TRP	TOP OF PAVEMENT
BUW	BOTTOM OF UNDERPASS	TRR	TOP OF RETAINING WALL
BUW	BOTTOM OF UNDERPASS	TRS	TOP OF ROOF
BUW	BOTTOM OF UNDERPASS	TRT	TOP OF TERRACE
BUW	BOTTOM OF UNDERPASS	TRU	TOP OF UNDERPASS
BUW	BOTTOM OF UNDERPASS	TRV	TOP OF VALVE
BUW	BOTTOM OF UNDERPASS	TRW	TOP OF WALL
BUW	BOTTOM OF UNDERPASS	TRX	TOP OF WINDOW
BUW	BOTTOM OF UNDERPASS	TRZ	TOP OF ZONE
BUW	BOTTOM OF UNDERPASS	TR1	TOP OF ROAD
BUW	BOTTOM OF UNDERPASS	TR2	TOP OF ROAD
BUW	BOTTOM OF UNDERPASS	TR3	TOP OF ROAD
BUW	BOTTOM OF UNDERPASS	TR4	TOP OF ROAD
BUW	BOTTOM OF UNDERPASS	TR5	TOP OF ROAD
BUW	BOTTOM OF UNDERPASS	TR6	TOP OF ROAD
BUW	BOTTOM OF UNDERPASS	TR7	TOP OF ROAD
BUW	BOTTOM OF UNDERPASS	TR8	TOP OF ROAD
BUW	BOTTOM OF UNDERPASS	TR9	TOP OF ROAD
BUW	BOTTOM OF UNDERPASS	TR0	TOP OF ROAD

LEGEND OF TYPICAL SERVICES

—C—	COMMUNICATIONS CABLE	—RW—	RECYCLED WATER
—CW—	COSMETIC STONEMASTER PIPE	—RM—	REINFORCING
—E—	UNDERGROUND ELECTRICITY	—RM—	REINFORCING
—G—	GAS LINE	—S—	SEWER
—H—	UNDERGROUND ELECTRICITY	—S—	SEWER
—K—	UNDERGROUND ELECTRICITY	—S—	SEWER
—L—	UNDERGROUND ELECTRICITY	—S—	SEWER
—M—	UNDERGROUND ELECTRICITY	—S—	SEWER
—N—	UNDERGROUND ELECTRICITY	—S—	SEWER
—O—	UNDERGROUND ELECTRICITY	—S—	SEWER
—P—	UNDERGROUND ELECTRICITY	—S—	SEWER
—Q—	UNDERGROUND ELECTRICITY	—S—	SEWER
—R—	UNDERGROUND ELECTRICITY	—S—	SEWER
—S—	UNDERGROUND ELECTRICITY	—S—	SEWER
—T—	UNDERGROUND ELECTRICITY	—S—	SEWER
—U—	UNDERGROUND ELECTRICITY	—S—	SEWER
—V—	UNDERGROUND ELECTRICITY	—S—	SEWER
—W—	UNDERGROUND ELECTRICITY	—S—	SEWER
—X—	UNDERGROUND ELECTRICITY	—S—	SEWER
—Y—	UNDERGROUND ELECTRICITY	—S—	SEWER
—Z—	UNDERGROUND ELECTRICITY	—S—	SEWER

- ALL UNDERGROUND SERVICE INFORMATION INCLUDING OF GENERAL POSITION AND SURFACE COVER DEPTHS MUST BE ON THE PLAN AND APPROVED ONLY
- ALL UNDERGROUND SERVICE INFORMATION HAS BEEN COMPILED FROM SERVICE AUTHORITY PLANS PROVIDED BY THE AUTHORITIES
- THE LOCATION OF SERVICES BETWEEN SURVEYED POINTS (AS INDICATED) HAS BEEN SHOWN DIMENSIONALLY ONLY USING THE SERVICE DIMENSIONS AS PROVIDED. THE EXACT LOCATION OF THESE SERVICES BETWEEN THE SURVEYED POINTS MUST BE VERIFIED PRIOR TO ANY EXCAVATION OR WORK ON ANY SERVICE & AREA ADJACENT TO THE POSITION OF THE SERVICE OF FURTHER DIMENSIONS
- ALL DIMENSIONS INDICATED, INCLUDING A PROJECT CONSIDERATION MUST CONTACT THE RELEVANT AUTHORITIES, IN ACCORDANCE WITH STANDARD TIA BEFORE YOU DO PROCEDURES PRIOR TO UNDERGROUND WORK WITHIN THE BOUNDARY OF THE SERVICE LINES TO VERIFY THE POSITION OF THE SERVICE LINES.

REDUCTION RATIO 1 : 100
 0 1 2 3 4 5 6 7 8 9 10
 LENGTHS ARE IN METRES

CLIENT: ROYAL FAR WEST
 TITLE No: REF:202018
 DATUM: A.H.D. ISSUE: 4
 DATE OF SURVEY: 21.01.2020 ISSUE DATE: 07.02.2020
 SURVEYOR: L.S. SHEET SIZE: A0
 DRAFTER: DW SHEET 7 OF 15 SHEETS

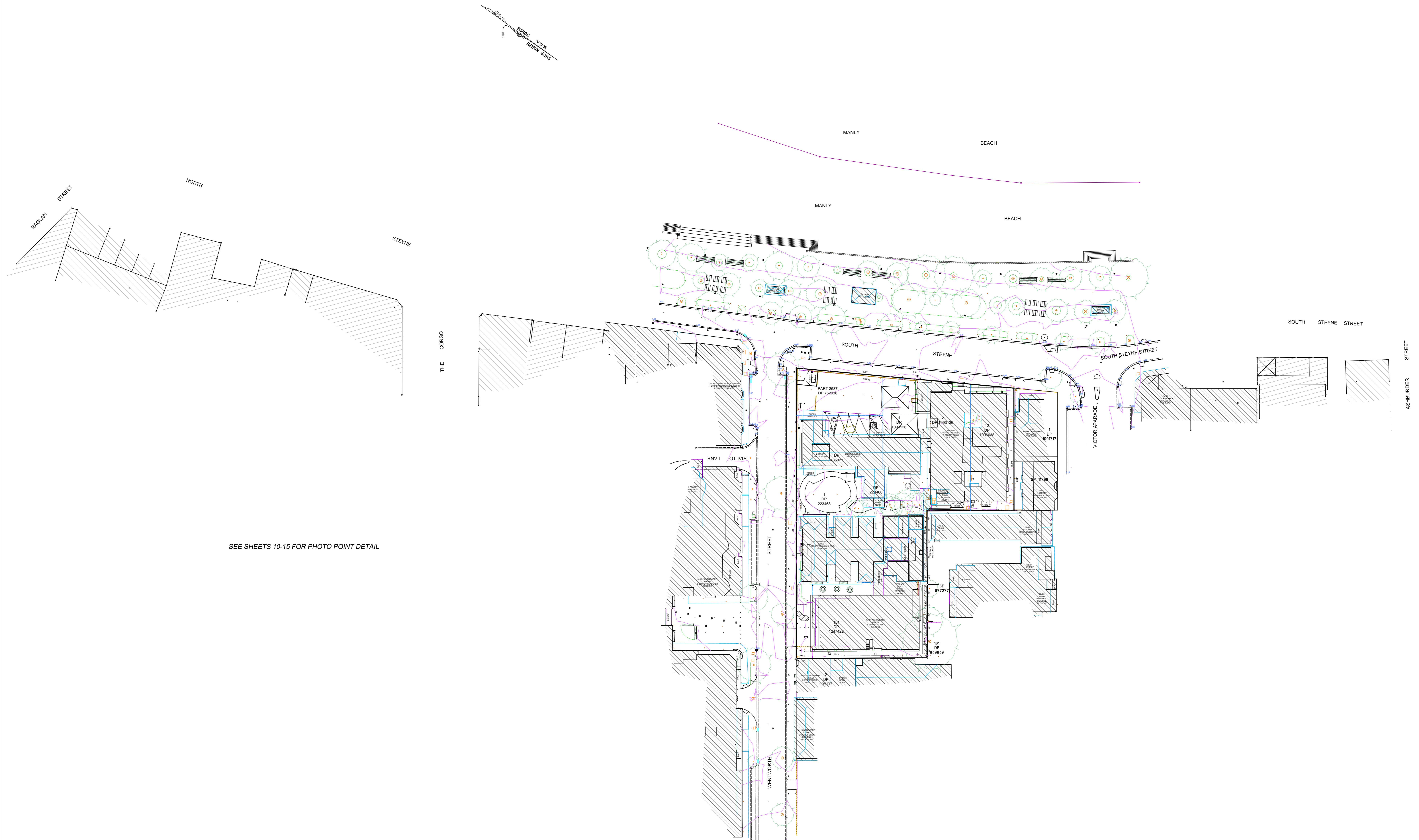
PLAN OF DETAILS AND LEVELS AT
 No 12-22 WENTWORTH STREET AND
 No 19-21 SOUTH STEYNE
 MANLY

Veris Australia Pty Ltd
 Suite 301, Level 3, 55 Holt Street
 Surry Hills NSW 2012
 PO Box 1807
 Surry Hills NSW 2012
 t: (02) 9272-4655
 email: surryhills@veris.com.au
 web site: www.veris.com.au

MANLY BEACH

CO-ORDINATES ON MGA GDA 94

- (E) PROPOSED EASEMENT FOR ELECTRICITY AND OTHER PURPOSES 5.9 WIDE ()
 - (R) EASEMENT FOR MAINTENANCE 1.83 WIDE ()
 - (X) RESERVATIONS AND CONDITIONS IN THE CROWN GRANT(S)
 - (Y) RESERVATIONS AND CONDITIONS IN THE CROWN GRANT(S)
 - (Z) EASEMENT FOR SUPPORT BK 2500 No.392
- TOTAL SITE AREA 6398.4m²



ISSUE	DATE	AMENDMENT	BY
2	14.02.20	DESCRIPTIONS NOTES ADDED	DW/LS
3	5.03.20	PHOTO POINTS SHEETS ADDED	SZ/PH

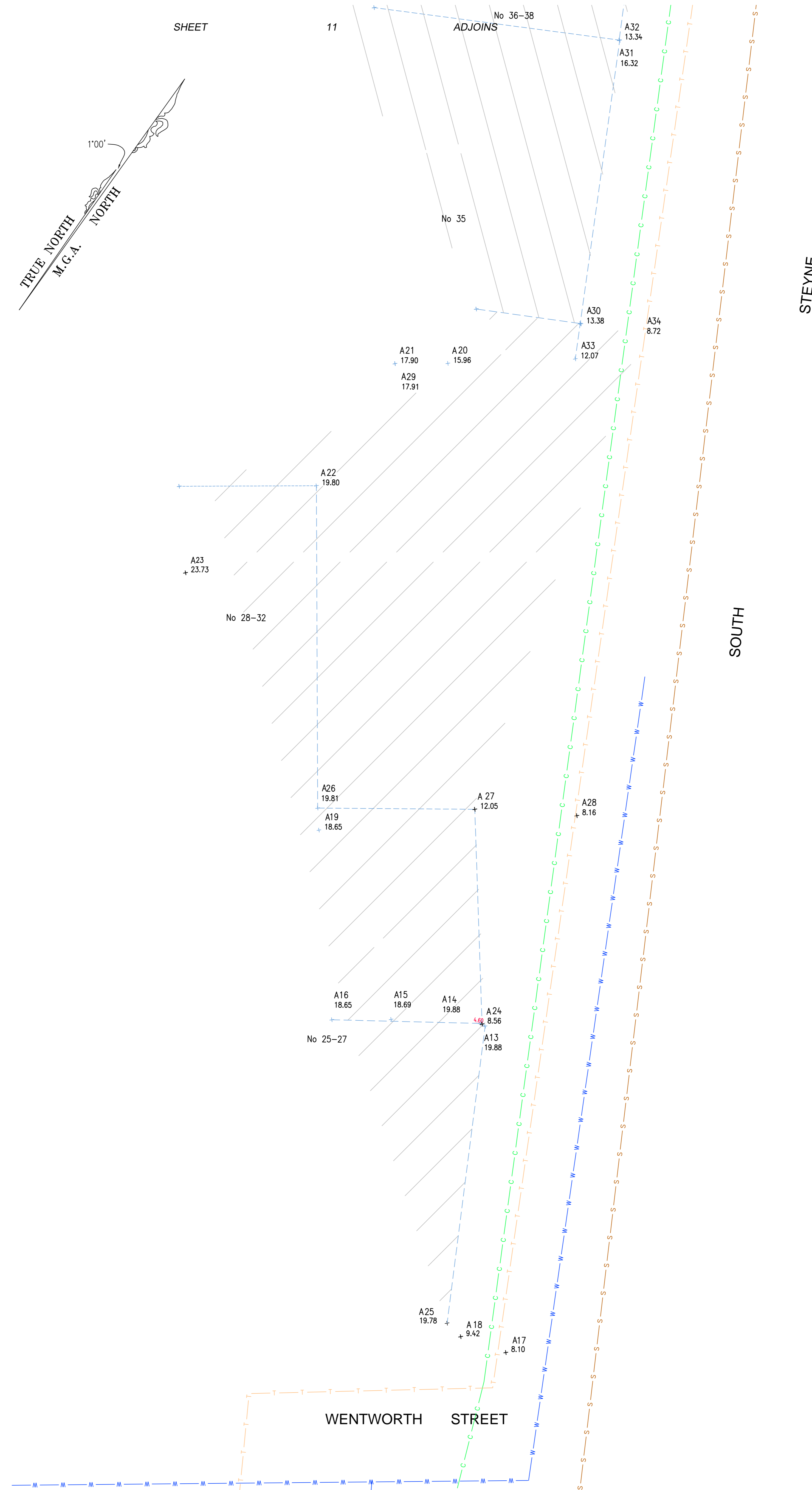
TYPICAL NOTES:

- ORDER OF LEVELS IN REF. IS 5.111 AND
- BOUNDARIES ARE ON GROUND SURVEY
- A SUFFICIENT BOUNDARY SURVEY HAS BEEN UNDERTAKEN
- BOUNDARIES SHOULD BE MARKED PRIOR TO ANY WORKS BEING CARRIED OUT ON OR NEAR THE BOUNDARIES
- RELATIONSHIP OF IMPROVEMENTS AND DETAIL TO BOUNDARIES IS DIMENSIONAL ONLY AND SPECIFIC DETAILS OF DETAIL WILL REQUIRE FURTHER SURVEY
- SERVICES SHOWN ARE BASED ON VERIFIABLE SURVEY INDICATORS EXISTING AT THE DATE OF SURVEY AND THE RELEVANT SERVICE ENGINEER OF THE SERVICES INDICATED. ALL SERVICE MUST BE CHECKED ON SITE PRIOR TO ANY WORK BEING UNDERTAKEN. VERIS AUSTRALIA PTY LTD. SHALL BE RESPONSIBLE FOR THE ACCURACY OR COMPLETENESS OF THE SERVICES SHOWN HEREON.
- ROOF, GATE & GUTTER HEIGHTS HAVE BEEN OBTAINED BY AN INDEPENDENT METHOD AND ARE ACCORDING TO DRAWING PURPOSES ONLY
- ADJOINING BUILDINGS AND DWELLINGS HAVE BEEN PLOTTED FOR DIMENSIONAL PURPOSES ONLY AND SPECIFIC DETAILS OF DETAIL WILL REQUIRE FURTHER SURVEY
- THE DIMETER (Ø), SPREAD (S) & HEIGHT (H) OF EACH TREE IS INDICATED ONLY AND SPECIFIC DETAILS OF DETAIL WILL REQUIRE FURTHER SURVEY
- CONTOURS ARE AN INDICATION OF THE TOPOGRAPHY ONLY. SPOT LEVELS SHOULD BE USED IF DETAILED DESIGN IS TO BE UNDERTAKEN
- CONDUIT PROFILES, etc.

LEGEND OF TYPICAL CODES

AE	- ARCHITECTURAL EMBELLISHMENT	MLD	- METAL LID
AL	- ALIGNMENT PIV	NS	- NATURAL SURFACE
BAL	- BALCONY	OCC	- STRUCTURE
BAW	- BOTTOM OF FINING	OPT	- OPTICAL FIBRE
BB	- BOTTOM OF BANK	PC	- PAVEMENT CROSSING
BC	- BOTTOM OF CHIMNEY	PED	- PEDESTRIAN CROSSING
BD	- BOTTOM OF DOOR	PEGS	- PEGS/DRILL MARK
BF	- BOTTOM OF FINISH	PI	- POWER POLE
BH	- BOTTOM OF HORIZONTAL BRICK	PK	- POWER POLE
BS	- BOTTOM OF ROOF	ROK	- ROCK
BT	- BOTTOM OF TERRACE	RYL	- RAINFALL
BU	- BOTTOM OF UTILITY	RM	- ROAD MARK
CA	- CONCRETE	RON	- CONCRETE RAIL
CB	- BOTTOM OF CONCRETE	SB	- SAND
CC	- CONCRETE	SD	- SAND
CD	- CONCRETE	SHR	- SHRUB
CE	- CONCRETE	SIS	- SIGN INSPECTION PIT
CF	- CONCRETE	SLH	- SINK LAMP HOLE
CG	- CONCRETE	SNM	- SINK MANHOLE
CH	- CHIMNEY	SP	- SPA POOL
CI	- CONCRETE	STW	- STREET LIGHT
CL	- CONCRETE	SV	- STOP VALVE
CM	- CONCRETE	TA	- TOP OF FINING
CO	- CONCRETE	TB	- TOP OF BANK
CP	- CONCRETE	TRB	- TOP OF BRIDGE
CQ	- CONCRETE	TRD	- TOP OF DRIVE
CR	- CONCRETE	TRF	- TOP OF DRIVE
CS	- CONCRETE	TRH	- TOP OF DRIVE
CT	- CONCRETE	TRM	- TOP OF DRIVE
CU	- CONCRETE	TRP	- TOP OF DRIVE
CV	- CONCRETE	TRQ	- TOP OF DRIVE
CW	- CONCRETE	TRR	- TOP OF DRIVE
CX	- CONCRETE	TRS	- TOP OF DRIVE
CA	- CONCRETE	TRT	- TOP OF DRIVE
CB	- CONCRETE	TRU	- TOP OF DRIVE
CC	- CONCRETE	TRV	- TOP OF DRIVE
CD	- CONCRETE	TRW	- TOP OF DRIVE
CE	- CONCRETE	TRX	- TOP OF DRIVE
CF	- CONCRETE	TRY	- TOP OF DRIVE
CG	- CONCRETE	TRZ	- TOP OF DRIVE
CH	- CONCRETE	TR1	- TOP OF DRIVE
CI	- CONCRETE	TR2	- TOP OF DRIVE
CJ	- CONCRETE	TR3	- TOP OF DRIVE
CK	- CONCRETE	TR4	- TOP OF DRIVE
CL	- CONCRETE	TR5	- TOP OF DRIVE
CM	- CONCRETE	TR6	- TOP OF DRIVE
CN	- CONCRETE	TR7	- TOP OF DRIVE
CO	- CONCRETE	TR8	- TOP OF DRIVE
CP	- CONCRETE	TR9	- TOP OF DRIVE
CQ	- CONCRETE	TR0	- TOP OF DRIVE
CR	- CONCRETE	TR1	- TOP OF DRIVE
CS	- CONCRETE	TR2	- TOP OF DRIVE
CT	- CONCRETE	TR3	- TOP OF DRIVE
CU	- CONCRETE	TR4	- TOP OF DRIVE
CV	- CONCRETE	TR5	- TOP OF DRIVE
CW	- CONCRETE	TR6	- TOP OF DRIVE
CX	- CONCRETE	TR7	- TOP OF DRIVE
CA	- CONCRETE	TR8	- TOP OF DRIVE
CB	- CONCRETE	TR9	- TOP OF DRIVE
CC	- CONCRETE	TR0	- TOP OF DRIVE
CD	- CONCRETE	TR1	- TOP OF DRIVE
CE	- CONCRETE	TR2	- TOP OF DRIVE
CF	- CONCRETE	TR3	- TOP OF DRIVE
CG	- CONCRETE	TR4	- TOP OF DRIVE
CH	- CONCRETE	TR5	- TOP OF DRIVE
CI	- CONCRETE	TR6	- TOP OF DRIVE
CJ	- CONCRETE	TR7	- TOP OF DRIVE
CK	- CONCRETE	TR8	- TOP OF DRIVE
CL	- CONCRETE	TR9	- TOP OF DRIVE
CM	- CONCRETE	TR0	- TOP OF DRIVE
CN	- CONCRETE	TR1	- TOP OF DRIVE
CO	- CONCRETE	TR2	- TOP OF DRIVE
CP	- CONCRETE	TR3	- TOP OF DRIVE
CQ	- CONCRETE	TR4	- TOP OF DRIVE
CR	- CONCRETE	TR5	- TOP OF DRIVE
CS	- CONCRETE	TR6	- TOP OF DRIVE
CT	- CONCRETE	TR7	- TOP OF DRIVE
CU	- CONCRETE	TR8	- TOP OF DRIVE
CV	- CONCRETE	TR9	- TOP OF DRIVE
CW	- CONCRETE	TR0	- TOP OF DRIVE
CX	- CONCRETE	TR1	- TOP OF DRIVE
CA	- CONCRETE	TR2	- TOP OF DRIVE
CB	- CONCRETE	TR3	- TOP OF DRIVE
CC	- CONCRETE	TR4	- TOP OF DRIVE
CD	- CONCRETE	TR5	- TOP OF DRIVE
CE	- CONCRETE	TR6	- TOP OF DRIVE
CF	- CONCRETE	TR7	- TOP OF DRIVE
CG	- CONCRETE	TR8	- TOP OF DRIVE
CH	- CONCRETE	TR9	- TOP OF DRIVE
CI	- CONCRETE	TR0	- TOP OF DRIVE
CJ	- CONCRETE	TR1	- TOP OF DRIVE
CK	- CONCRETE	TR2	- TOP OF DRIVE
CL	- CONCRETE	TR3	- TOP OF DRIVE
CM	- CONCRETE	TR4	- TOP OF DRIVE
CN	- CONCRETE	TR5	- TOP OF DRIVE
CO	- CONCRETE	TR6	- TOP OF DRIVE
CP	- CONCRETE	TR7	- TOP OF DRIVE
CQ	- CONCRETE	TR8	- TOP OF DRIVE
CR	- CONCRETE	TR9	- TOP OF DRIVE
CS	- CONCRETE	TR0	- TOP OF DRIVE
CT	- CONCRETE	TR1	- TOP OF DRIVE
CU	- CONCRETE	TR2	- TOP OF DRIVE
CV	- CONCRETE	TR3	- TOP OF DRIVE
CW	- CONCRETE	TR4	- TOP OF DRIVE
CX	- CONCRETE	TR5	- TOP OF DRIVE
CA	- CONCRETE	TR6	- TOP OF DRIVE
CB	- CONCRETE	TR7	- TOP OF DRIVE
CC	- CONCRETE	TR8	- TOP OF DRIVE
CD	- CONCRETE	TR9	- TOP OF DRIVE
CE	- CONCRETE	TR0	- TOP OF DRIVE
CF	- CONCRETE	TR1	- TOP OF DRIVE
CG	- CONCRETE	TR2	- TOP OF DRIVE
CH	- CONCRETE	TR3	- TOP OF DRIVE
CI	- CONCRETE	TR4	- TOP OF DRIVE
CJ	- CONCRETE	TR5	- TOP OF DRIVE
CK	- CONCRETE	TR6	- TOP OF DRIVE
CL	- CONCRETE	TR7	- TOP OF DRIVE
CM	- CONCRETE	TR8	- TOP OF DRIVE
CN	- CONCRETE	TR9	- TOP OF DRIVE
CO	- CONCRETE	TR0	- TOP OF DRIVE
CP	- CONCRETE	TR1	- TOP OF DRIVE
CQ	- CONCRETE	TR2	- TOP OF DRIVE
CR	- CONCRETE	TR3	- TOP OF DRIVE
CS	- CONCRETE	TR4	- TOP OF DRIVE
CT	- CONCRETE	TR5	- TOP OF DRIVE
CU	- CONCRETE	TR6	- TOP OF DRIVE
CV	- CONCRETE	TR7	- TOP OF DRIVE
CW	- CONCRETE	TR8	- TOP OF DRIVE
CX	- CONCRETE	TR9	- TOP OF DRIVE
CA	- CONCRETE	TR0	- TOP OF DRIVE
CB	- CONCRETE	TR1	- TOP OF DRIVE
CC	- CONCRETE	TR2	- TOP OF DRIVE
CD	- CONCRETE	TR3	- TOP OF DRIVE
CE	- CONCRETE	TR4	- TOP OF DRIVE
CF	- CONCRETE	TR5	- TOP OF DRIVE
CG	- CONCRETE	TR6	- TOP OF DRIVE
CH	- CONCRETE	TR7	- TOP OF DRIVE
CI	- CONCRETE	TR8	- TOP OF DRIVE
CJ	- CONCRETE	TR9	- TOP OF DRIVE
CK	- CONCRETE	TR0	- TOP OF DRIVE
CL	- CONCRETE	TR1	- TOP OF DRIVE
CM	- CONCRETE	TR2	- TOP OF DRIVE
CN	- CONCRETE	TR3	- TOP OF DRIVE
CO	- CONCRETE	TR4	- TOP OF DRIVE
CP	- CONCRETE	TR5	- TOP OF DRIVE
CQ	- CONCRETE	TR6	- TOP OF DRIVE
CR	- CONCRETE	TR7	- TOP OF DRIVE
CS	- CONCRETE	TR8	- TOP OF DRIVE
CT	- CONCRETE	TR9	- TOP OF DRIVE
CU	- CONCRETE	TR0	- TOP OF DRIVE
CV	- CONCRETE	TR1	- TOP OF DRIVE
CW	- CONCRETE	TR2	- TOP OF DRIVE
CX	- CONCRETE	TR3	- TOP OF DRIVE
CA	- CONCRETE	TR4	- TOP OF DRIVE
CB	- CONCRETE	TR5	- TOP OF DRIVE
CC	- CONCRETE	TR6	- TOP OF DRIVE
CD	- CONCRETE	TR7	- TOP OF DRIVE
CE	- CONCRETE	TR8	- TOP OF DRIVE
CF	- CONCRETE	TR9	- TOP OF DRIVE
CG	- CONCRETE	TR0	- TOP OF DRIVE
CH	- CONCRETE	TR1	- TOP OF DRIVE
CI	- CONCRETE	TR2	- TOP OF DRIVE
CJ	- CONCRETE	TR3	- TOP OF DRIVE
CK	- CONCRETE	TR4	- TOP OF DRIVE
CL	- CONCRETE	TR5	- TOP OF DRIVE
CM	- CONCRETE	TR6	- TOP OF DRIVE
CN	- CONCRETE	TR7	- TOP OF DRIVE
CO	- CONCRETE	TR8	- TOP OF DRIVE
CP	- CONCRETE	TR9	- TOP OF DRIVE
CQ	- CONCRETE	TR0	- TOP OF DRIVE
CR	- CONCRETE	TR1	- TOP OF DRIVE
CS	- CONCRETE	TR2	- TOP OF DRIVE
CT	- CONCRETE	TR3	- TOP OF DRIVE
CU	- CONCRETE	TR4	- TOP OF DRIVE
CV	- CONCRETE	TR5	- TOP OF DRIVE
CW	- CONCRETE	TR6	- TOP OF DRIVE
CX	- CONCRETE	TR7	- TOP OF DRIVE
CA	- CONCRETE	TR8	- TOP OF DRIVE
CB	- CONCRETE	TR9	- TOP OF DRIVE
CC	- CONCRETE	TR0	- TOP OF DRIVE
CD	- CONCRETE	TR1	- TOP OF DRIVE
CE	- CONCRETE	TR2	- TOP OF DRIVE
CF	- CONCRETE	TR3	- TOP OF DRIVE
CG	- CONCRETE	TR4	- TOP OF DRIVE
CH	- CONCRETE	TR5	- TOP OF DRIVE
CI	- CONCRETE	TR6	- TOP OF DRIVE
CJ	- CONCRETE	TR7	- TOP OF DRIVE
CK	- CONCRETE	TR8	- TOP OF DRIVE
CL	- CONCRETE	TR9	- TOP OF DRIVE
CM	- CONCRETE	TR0	- TOP OF DRIVE
CN	- CONCRETE	TR1	- TOP OF DRIVE
CO	- CONCRETE	TR2	- TOP OF DRIVE
CP	- CONCRETE	TR3	- TOP OF DRIVE
CQ	- CONCRETE	TR4	- TOP OF DRIVE
CR	- CONCRETE	TR5	- TOP OF DRIVE
CS	- CONCRETE	TR6	- TOP OF DRIVE
CT	- CONCRETE	TR7	- TOP OF DRIVE
CU	- CONCRETE	TR8	- TOP OF DRIVE
CV	- CONCRETE	TR9	- TOP OF DRIVE
CW	- CONCRETE	TR0	- TOP OF DRIVE
CX	- CONCRETE	TR1	- TOP OF DRIVE
CA	- CONCRETE	TR2	- TOP OF DRIVE
CB	- CONCRETE	TR3	- TOP OF DRIVE
CC	- CONCRETE	TR4	- TOP OF DRIVE
CD	- CONCRETE	TR5	- TOP OF DRIVE
CE	- CONCRETE	TR6	- TOP OF DRIVE
CF	- CONCRETE	TR7	- TOP OF DRIVE
CG	- CONCRETE	TR8	- TOP OF DRIVE
CH	- CONCRETE	TR9	- TOP OF DRIVE
CI	- CONCRETE	TR0	- TOP OF DRIVE
CJ	- CONCRETE	TR1	- TOP OF DRIVE
CK	- CONCRETE	TR2	- TOP OF DRIVE
CL	- CONCRETE	TR3	- TOP OF DRIVE
CM	- CONCRETE	TR4	- TOP OF DRIVE
CN	- CONCRETE	TR5	- TOP OF DRIVE
CO	- CONCRETE	TR6	- TOP OF DRIVE
CP	- CONCRETE	TR7	- TOP OF DRIVE
CQ	- CONCRETE	TR8	- TOP OF DRIVE
CR	- CONCRETE	TR9	- TOP OF DRIVE
CS	- CONCRETE	TR0	- TOP OF DRIVE
CT	- CONCRETE	TR1	- TOP OF DRIVE
CU	- CONCRETE	TR2	- TOP OF DRIVE
CV	- CONCRETE	TR3	- TOP OF DRIVE
CW	- CONCRETE	TR4	- TOP OF DRIVE
CX	- CONCRETE	TR5	- TOP OF DRIVE
CA	- CONCRETE	TR6	- TOP OF DRIVE
CB	- CONCRETE	TR7	- TOP OF DRIVE
CC	- CONCRETE	TR8	- TOP OF DRIVE
CD	- CONCRETE	TR9	- TOP OF DRIVE
CE	- CONCRETE	TR0	- TOP OF DRIVE
CF	- CONCRETE	TR1	- TOP OF DRIVE
CG	- CONCRETE	TR2	- TOP OF DRIVE
CH	- CONCRETE	TR3	- TOP OF DRIVE
CI	- CONCRETE	TR4	- TOP OF DRIVE
CJ	- CONCRETE	TR5	- TOP OF DRIVE
CK	- CONCRETE	TR6	- TOP OF DRIVE
CL	- CONCRETE	TR7	- TOP OF DRIVE
CM	- CONCRETE	TR8	- TOP OF DRIVE
CN	- CONCRETE	TR9	- TOP OF DRIVE
CO	- CONCRETE	TR0	- TOP OF DRIVE
CP	- CONCRETE	TR1	- TOP OF DRIVE
CQ	- CONCRETE	TR2	- TOP OF DRIVE
CR	- CONCRETE	TR3	- TOP OF DRIVE
CS	- CONCRETE	TR4	- TOP OF DRIVE
CT	- CONCRETE	TR5	- TOP OF DRIVE
CU	- CONCRETE	TR6	- TOP OF DRIVE
CV	- CONCRETE	TR7	- TOP OF DRIVE
CW	- CONCRETE	TR8	- TOP OF DRIVE
CX	- CONCRETE	TR9	- TOP OF DRIVE
CA	- CONCRETE	TR0	- TOP OF DRIVE
CB	- CONCRETE	TR1	- TOP OF DRIVE
CC	- CONCRETE	TR2	- TOP OF DRIVE
CD	- CONCRETE	TR3	- TOP OF DRIVE
CE	- CONCRETE	TR4	- TOP OF DRIVE
CF	- CONCRETE	TR5	- TOP OF DRIVE
CG	- CONCRETE	TR6	- TOP OF DRIVE
CH	- CONCRETE	TR7	- TOP OF DRIVE
CI	- CONCRETE	TR8	- TOP OF DRIVE
CJ	- CONCRETE	TR9	- TOP OF DRIVE
CK	- CONCRETE	TR0	- TOP OF DRIVE
CL	- CONCRETE	TR1	- TOP OF DRIVE
CM	- CONCRETE	TR2	- TOP OF DRIVE
CN	- CONCRETE	TR3	- TOP OF DRIVE
CO	- CONCRETE	TR4	- TOP OF DRIVE
CP	- CONCRETE	TR5	- TOP OF DRIVE
CQ	- CONCRETE	TR6	- TOP OF DRIVE
CR	- CONCRETE	TR7	- TOP OF DRIVE
CS	- CONCRETE	TR8	- TOP OF DRIVE
CT	- CONCRETE	TR9	- TOP OF DRIVE
CU	- CONCRETE	TR0	- TOP OF DRIVE
CV	- CONCRETE	TR1	- TOP OF DRIVE
CW	- CONCRETE	TR2	- TOP OF DRIVE
CX	- CONCRETE	TR3	- TOP OF DRIVE
CA	- CONCRETE	TR4	- TOP OF DRIVE
CB	- CONCRETE	TR5	- TOP OF DRIVE
CC	- CONCRETE	TR6	- TOP OF DRIVE
CD	- CONCRETE	TR7	- TOP OF DRIVE
CE	- CONCRETE	TR8	- TOP OF DRIVE
CF	- CONCRETE	TR9	- TOP OF DRIVE
CG	- CONCRETE	TR0	- TOP OF DRIVE
CH	- CONCRETE	TR1	- TOP OF DRIVE
CI	- CONCRETE	TR2	- TOP OF DRIVE
CJ	- CONCRETE	TR3	- TOP OF DRIVE
CK	- CONCRETE	TR4	- TOP OF DRIVE
CL	- CONCRETE	TR5	- TOP OF DRIVE
CM	- CONCRETE	TR6	- TOP OF DRIVE
CN	- CONCRETE	TR7	- TOP OF DRIVE
CO	- CONCRETE	TR8	- TOP OF DRIVE
CP	- CONCRETE	TR9	- TOP OF DRIVE
CQ	- CONCRETE	TR0	- TOP OF DRIVE
CR	- CONCRETE	TR1	- TOP OF DRIVE
CS	- CONCRETE	TR2	- TOP OF DRIVE
CT	- CONCRETE	TR3	- TOP OF DRIVE
CU	- CONCRETE	TR4	- TOP OF DRIVE
CV	- CONCRETE	TR5	- TOP OF DRIVE
CW	- CONCRETE	TR6	- TOP OF DRIVE
CX	- CONCRETE	TR7	- TOP OF DRIVE
CA	- CONCRETE	TR8	- TOP OF DRIVE
CB	- CONCRETE	TR9	- TOP OF DRIVE
CC	- CONCRETE	TR0	- TOP OF DRIVE
CD	- CONCRETE	TR1	- TOP OF DRIVE
CE	- CONCRETE	TR2	- TOP OF DRIVE
CF	- CONCRETE	TR3	- TOP OF DRIVE
CG	- CONCRETE	TR4	- TOP OF DRIVE
CH	- CONCRETE	TR5	- TOP OF DRIVE
CI	- CONCRETE	TR6	- TOP OF DRIVE
CJ	- CONCRETE	TR7	- TOP OF DRIVE
CK	- CONCRETE	TR8	- TOP OF DRIVE
CL	- CONCRETE	TR9	- TOP OF DRIVE
CM	- CONCRETE	TR0	- TOP OF DRIVE
CN	- CONCRETE	TR1	- TOP OF DRIVE
CO	- CONCRETE	TR2	- TOP OF DRIVE
CP	- CONCRETE	TR3	- TOP OF DRIVE
CQ	- CONCRETE	TR4	- TOP OF DRIVE
CR	- CONCRETE	TR5	- TOP OF DRIVE
CS	- CONCRETE	TR6	- TOP OF DRIVE
CT	- CONCRETE	TR7	- TOP OF DRIVE
CU	- CONCRETE	TR8	- TOP OF DRIVE
CV	- CONCRETE	TR9	- TOP OF DRIVE
CW	- CONCRETE	TR0	- TOP OF DRIVE
CX	- CONCRETE	TR1	- TOP OF DRIVE
CA	- CONCRETE	TR2	- TOP OF DRIVE
CB	- CONCRETE	TR3	- TOP OF DRIVE
CC	- CONCRETE	TR4	- TOP OF DRIVE
CD	- CONCRETE	TR5	- TOP OF DRIVE
CE	- CONCRETE	TR6	- TOP OF DRIVE
CF	- CONCRETE	TR7	- TOP OF DRIVE
CG	- CONCRETE	TR8	- TOP OF DRIVE
CH	- CONCRETE	TR9	- TOP OF DRIVE
CI	- CONCRETE	TR0	- TOP OF DRIVE
CJ	- CONCRETE	TR1	- TOP OF DRIVE
CK	- CONCRETE	TR2	- TOP OF DRIVE

- (E) PROPOSED EASEMENT FOR ELECTRICITY AND OTHER PURPOSES 5.9 WIDE ()
 - (R) EASEMENT FOR MAINTENANCE 1.83 WIDE ()
 - (X) RESERVATIONS AND CONDITIONS IN THE CROWN GRANT(S)
 - (Y) RESERVATIONS AND CONDITIONS IN THE CROWN GRANT(S)
 - (Z) EASEMENT FOR SUPPORT BK 2500 No.392
- TOTAL SITE AREA 6398.4m²



NOTE:
HATCHING APPROXIMATE ONLY

ISSUE	DATE	AMENDMENT	BY
2	14.02.20	DESCRIPTION NOTES ADDED	DW/LS
3	03.10.20	PHOTO POINTS SHEETS ADDED	SZ/PH

- TYPICAL NOTES:**
- ORDER OF LEVELS IN 801 RL 5.111 AND
 - BOUNDARY LINE ON OF COLLECTED NOTES
 - A SUFFICIENT BOUNDARY SURVEY HAS BEEN UNDERTAKEN
 - BOUNDARIES SHOULD BE MARKED PRIOR TO ANY WORKS BEING CARRIED OUT ON OR NEAR THE BOUNDARIES
 - RELATIONSHIP OF IMPROVEMENTS AND DEMO TO BOUNDARIES IS DIMENSIONAL ONLY AND SPECIFIC DETAILS OF CONSTRUCTION WILL REQUIRE FURTHER SURVEY
 - SERVICES SHOWN ARE BASED ON VERIFIABLE SURFACE INDICATORS EXISTENT AT THE DATE OF SURVEY AND THE RELEVANT SERVICE ENGINEER OF THE SERVICES INDICATED. ALL SERVICE MUST BE VERIFIED ON SITE PRIOR TO ANY WORK BEING UNDERTAKEN. VERIS AUSTRALIA PTY LTD. SHALL NOT BE RESPONSIBLE FOR THE ACCURACY OR COMPLETENESS OF THE SERVICES SHOWN HEREON.
 - ROOF, DATE & GUTTER HEIGHTS HAVE BEEN OBTAINED BY AN INDIRECT METHOD AND ARE ACCORDING TO DRAWING PURPOSES ONLY
 - ADJOINING BUILDINGS AND DWELLINGS HAVE BEEN PLOTTED FOR DIMENSIONAL PURPOSES ONLY AND SPECIFIC DETAILS OF CONSTRUCTION WILL REQUIRE FURTHER SURVEY
 - THE DIAMETER (Ø), SPREAD (S) & HEIGHT (H) OF EACH TREE IS INDICATED ONLY AND SPECIFIC DETAILS OF CONSTRUCTION WILL REQUIRE FURTHER SURVEY
 - CONTIGUOUS ARE AN INDICATION OF THE TOPOGRAPHY ONLY. SPOT LEVELS SHOULD BE USED IF DETAILED DESIGN IS TO BE UNDERTAKEN
 - CONTOUR INTERVAL: 1 METRE

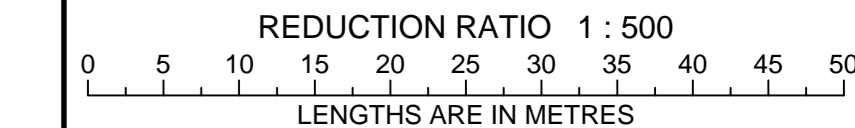
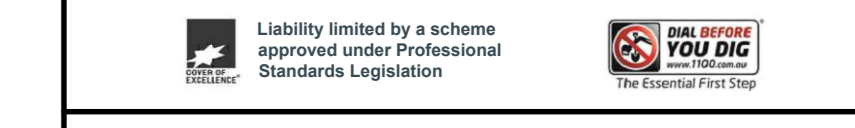
LEGEND OF TYPICAL CODES

AE - ARCHITECTURAL ENLIGHTENMENT	MEG - MASONRY SURFACE
AP - ALIGNMENT PIV	MET - METAL LED
BALC - BALCONY	OCC - OCCUPANT
BANK - BOTTOM OF BANK	OCC - OCCUPANT
BB - BOTTOM OF BANK	PCC - FINISH CROSSING
CH - BOTTOM OF CHANTRY	PED - PEDESTAL CROSSING
BD - BOTTOM OF DOOR	PFG - PAVEMENT MARK
BF - BOTTOM OF FINISH	PN - POWER POLE
BB - BOTTOM OF BANK	PN - POWER POLE
BR - BOTTOM OF BANK	R.O. - ROCK
BR - BOTTOM OF BANK	RL - RAILWAY
BR - BOTTOM OF BANK	RM - RECONSTRUCTION MARK
BR - BOTTOM OF BANK	RO - ROOF
BR - BOTTOM OF BANK	RO - CONCRETE NAIL
BR - BOTTOM OF BANK	RO - CONCRETE NAIL
BR - BOTTOM OF BANK	RO - CONCRETE NAIL
BR - BOTTOM OF BANK	RO - CONCRETE NAIL
BR - BOTTOM OF BANK	RO - CONCRETE NAIL
BR - BOTTOM OF BANK	RO - CONCRETE NAIL
BR - BOTTOM OF BANK	RO - CONCRETE NAIL
BR - BOTTOM OF BANK	RO - CONCRETE NAIL
BR - BOTTOM OF BANK	RO - CONCRETE NAIL
BR - BOTTOM OF BANK	RO - CONCRETE NAIL

LEGEND OF TYPICAL SERVICES

—C— COMMUNICATIONS CABLE	—RW— RECYCLED WATER
—CWP— CROWN CORNER WATER PIPE	—RW— RECYCLED WATER
—E— UNDERGROUND ELECTRICITY	—RW— RECYCLED WATER
—EC— UNDERGROUND ELECTRICITY & OPTICAL CABLES	—S— SINK
—F— FIRE SERVICE	—S— SINK OUTFALL
—G— GAS LINE & ELECTRICITY CABLES	—ST— SHARPS TRENCH
—G— GAS LINE & ELECTRICITY CABLES	—ST— SHARPS TRENCH
—G— GAS LINE & ELECTRICITY CABLES	—ST— SHARPS TRENCH
—G— GAS LINE & ELECTRICITY CABLES	—ST— SHARPS TRENCH

- ALL UNDERGROUND SERVICE INFORMATION PROVIDED IS GENERAL IN NATURE AND SUBJECT TO CHANGE WITHOUT NOTICE ON THE PART OF APPLICANT ONLY
- ALL UNDERGROUND SERVICE INFORMATION HAS BEEN OBTAINED FROM SERVICE AUTHORITY PLANS PROVIDED BY THE AUTHORITIES
- THE LOCATION OF SERVICES BETWEEN SHOWN POINTS (AS INDICATED) HAS BEEN SHOWN DIMENSIONALLY ONLY USING THE SERVICE ENGINEER'S ASSUMPTIONS. THE EXACT LOCATION OF THESE SERVICES BETWEEN THE SHOWN POINTS MUST BE VERIFIED PRIOR TO ANY EXCAVATION OR WORKING TO BE CARRIED OUT AND ADEQUATE PRECAUTIONS MUST BE TAKEN TO PROTECT THE SERVICES FROM DAMAGE
- ALL DIMENSIONAL INFORMATION, INCLUDING A PROJECT CONSULTANT MUST CONTACT THE SERVICES AUTHORITIES, IN ACCORDANCE WITH STANDARD TALK BEFORE ANY 'DIG' PROCEDURES PRIOR TO UNDERTAKING ANY WORK WITHIN THE BOUNDARY OF THE SERVICE LINES TO VERIFY THE POSITION OF THE SERVICE LINES.



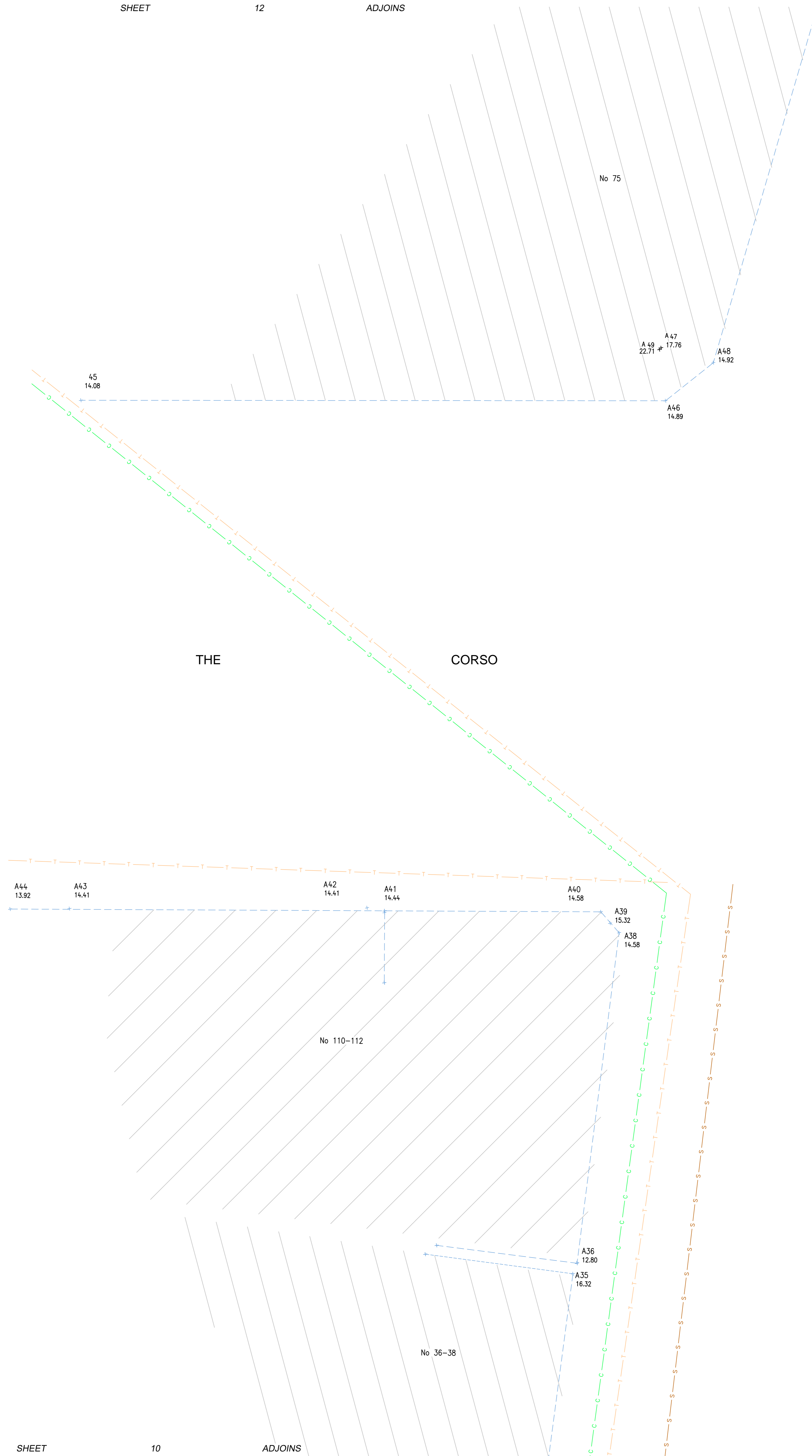
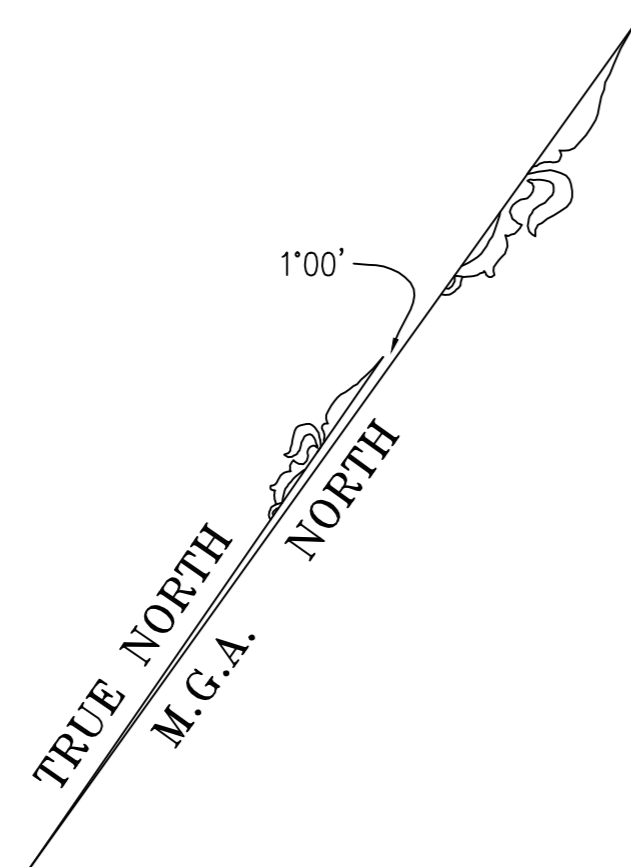
CLIENT: ROYAL FAR WEST

TITLE No: REF:202018
 DATUM: A.H.D. ISSUE: 3
 DATE OF SURVEY: 21.01.2020 ISSUE DATE: 07.02.2020
 SURVEYOR: LS SHEET SIZE: A0
 DRAFTER: DW SHEET 10 OF 15 SHEETS

PLAN SHOWING ADJOINING PROPERTIES AND PHOTO POINTS AT No 12-22 WENTWORTH STREET AND No 19-21 SOUTH STEYNE MANLY

Veris Australia Pty Ltd
 Suite 301, Level 3, 55 Holt Street
 Surry Hills NSW 2012
 PO Box 1807
 Strathmore Hills NSW 2012
 t: (02) 92724655
 email: surryhills@veris.com.au
 web site: www.veris.com.au

(E) PROPOSED EASEMENT FOR ELECTRICITY AND OTHER PURPOSES 5.9 WIDE ()
(R) EASEMENT FOR MAINTENANCE 1.83 WIDE ()
(X) RESERVATIONS AND CONDITIONS IN THE CROWN GRANT(S)
(Y) RESERVATIONS AND CONDITIONS IN THE CROWN GRANT(S)
(Z) EASEMENT FOR SUPPORT BK 2500 No.392
TOTAL SITE AREA 6398.4m²



STEYNE

NORTH

NOTE:
HATCHING APPROXIMATE ONLY

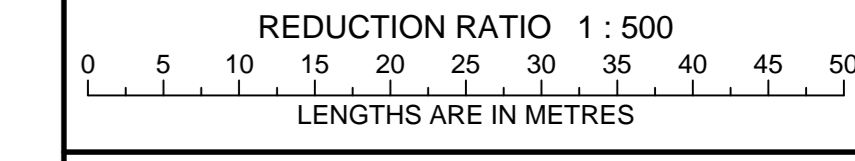
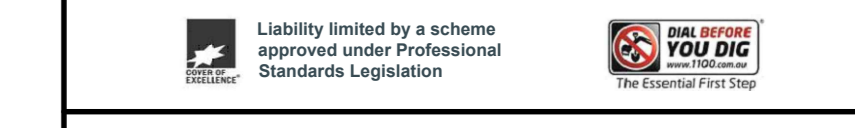
Table with columns: ISSUE, DATE, AMENDMENT, BY. Contains revision history for the drawing.

- TYPICAL NOTES: 1. ORDER OF LEVELS IN SET IS 1:11 AND... 2. BOUNDARY ARE OR OF COLLECT NOTES... 3. A SUFFICIENT BOUNDARY SURVEY HAS BEEN UNDERTAKEN... 4. BOUNDARIES SHOULD BE MARKED PRIOR TO ANY WORKS BEING CARRIED OUT ON OR NEAR THE BOUNDARIES... 5. RELIEF OF IMPROVEMENTS AND DEMO TO BOUNDARIES IS DIMENSIONAL ONLY AND SPECIFIC DETAILS OF CRITICAL WALL REQUIRE FURTHER SURVEY... 6. SERVICES SHOWN ARE BASED ON VISIBLE SURFACE INDICATORS EXCEPT AT THE DATE OF SURVEY AND THE RELEVANT SERVICE ENGINEER OF THE MANLY AUTHORITIES. ALL SERVICE MUST BE VERIFIED ON SITE PRIOR TO ANY WORK BEING UNDERTAKEN. VERIS AUSTRALIA PTY LTD BEARS NO RESPONSIBILITY FOR THE ACCURACY OR COMPLETENESS OF THE SERVICES SHOWN HEREIN... 7. ROAD, DRAIN & UTILITY SERVICES HAVE BEEN OBTAINED BY AN INDIRECT METHOD AND ARE ACCORDING FOR PLANNING PURPOSES ONLY... 8. EXISTING BUILDINGS AND DWELLINGS HAVE BEEN PLOTTED FOR DIMENSIONAL PURPOSES ONLY AND SPECIFIC DETAILS OF CRITICAL WALL REQUIRE FURTHER SURVEY... 9. THE DIAMETER (Ø), SPREAD (S) & HEIGHT (H) OF EACH TREE IS INDICATED ONLY AND SPECIFIC DETAILS OF CRITICAL WALL REQUIRE FURTHER SURVEY... 10. CONTIGUOUS ARE AN INDICATION OF THE DISCONTIGUOUS ONLY. SPOT LEVELS SHOULD BE USED IF DETAILED DESIGN IS TO BE UNDERTAKEN... 11. CONSULT DESIGNER FOR MORE DETAILS.

LEGEND OF TYPICAL CODES: Table listing various codes and their corresponding descriptions for architectural and structural elements.

LEGEND OF TYPICAL SERVICES: Table listing various service codes and their corresponding descriptions for utility and infrastructure services.

- 1. ALL UNDERGROUND SERVICE INFORMATION PROVIDED IS GENERAL POSITION AND SURFACE COVER OPTICS NOTES ON THE PLAN ARE APPROXIMATE ONLY... 2. ALL UNDERGROUND SERVICE INFORMATION HAS BEEN COMPILED FROM SERVICE AUTHORITY PLANS PROVIDED BY THE AUTHORITIES... 3. THE LOCATION OF SERVICES BETWEEN SURVEYED POINTS (AS INDICATED) HAVE BEEN SHOWN DIMENSIONALLY ONLY USING THE SERVICE ENGINEER'S PROVIDED. THE EXACT LOCATION OF THESE SERVICES BETWEEN THE SURVEYED POINTS MUST BE VERIFIED PRIOR TO ANY EXCAVATION OR ANY WORK BEING CARRIED OUT... 4. ALL DIMENSIONAL INFORMATION, INCLUDING A PROJECT CONSULTANT MUST CONTACT THE MANLY AUTHORITIES, IN ACCORDANCE WITH STANDARD 'TAL BEFORE YOU DIG' PROCEDURES PRIOR TO UNDERTAKING ANY WORK WITHIN THE VICINITY OF THE SERVICE LINES TO VERIFY THE POSITION OF THE SERVICE LINES.



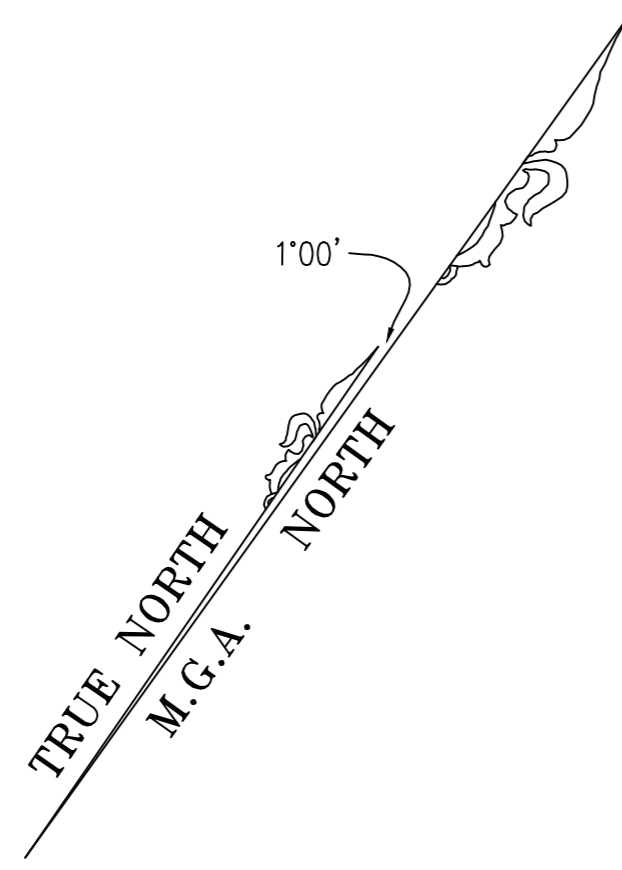
CLIENT: ROYAL FAR WEST

Table with columns: TITLE No., DATE OF SURVEY, SURVEYOR, DRAFTER, REF: 202018, ISSUE: 3, ISSUE DATE: 07.02.2020, SHEET SIZE: A0, SHEET 11 OF 15 SHEETS.

PLAN SHOWING ADJOINING PROPERTIES AND PHOTO POINTS AT No 12-22 WENTWORTH STREET AND No 19-21 SOUTH STEYNE MANLY

Veris Australia Pty Ltd contact information including address, phone, email, and website.

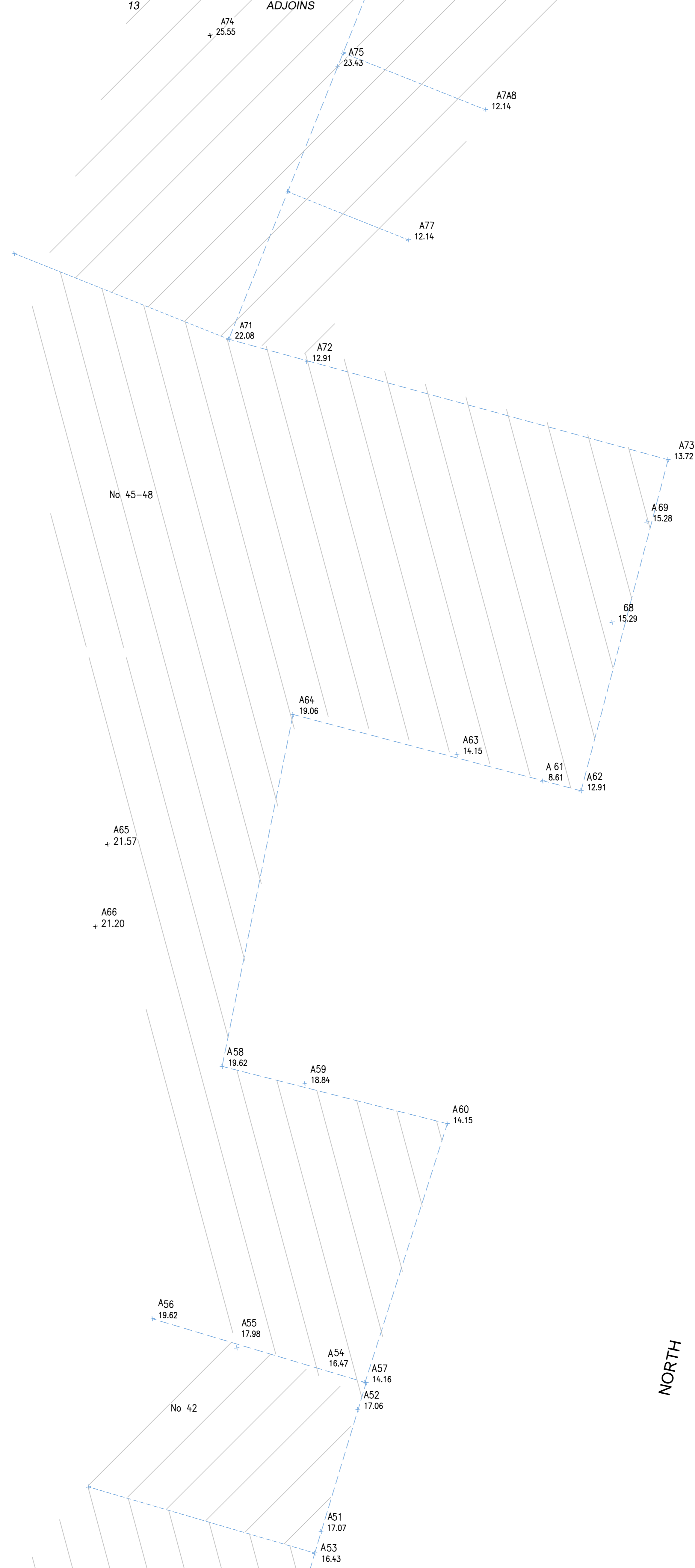
(E) PROPOSED EASEMENT FOR ELECTRICITY AND OTHER PURPOSES 5.9 WIDE ()
 (R) EASEMENT FOR MAINTENANCE 1.83 WIDE ()
 (X) RESERVATIONS AND CONDITIONS IN THE CROWN GRANT(S)
 (Y) RESERVATIONS AND CONDITIONS IN THE CROWN GRANT(S)
 (Z) EASEMENT FOR SUPPORT BK 2500 No.392
TOTAL SITE AREA 6398.4m²



SHEET 13

ADJOINS

12.14



STEWYNE

NORTH

SHEET 11

ADJOINS

NOTE:
 HATCHING APPROXIMATE ONLY

ISSUE	DATE	AMENDMENT	BY
2	14.02.20	DESCRIPTION NOTES ADDED	DW/LS
3	5.03.20	PHOTO POINTS SHEETS ADDED	SZ/PH

- TYPICAL NOTES:**
- ORDER OF LEVELS IN BTO RL 5.111 AND
 - BOUNDARY ARE OR OF SURVEY NOTES
 - A SEPARATE BOUNDARY SURVEY HAS BEEN UNDERTAKEN
 - BOUNDARIES SHOULD BE MARKED PRIOR TO ANY WORKS BEING CARRIED OUT ON OR NEAR THE BOUNDARIES
 - RELATIONSHIP OF IMPROVEMENTS AND BUILT TO BOUNDARIES IS DIMENSIONAL ONLY AND SPECIFIC DETAILS IF CRITICAL, WILL REQUIRE FURTHER SURVEY
 - SERVICES SHOWN ARE BASED ON VERIFIABLE SURFACE INDICATORS EXCEPT AT THE DATE OF SURVEY AND THE RELEVANT SERVICE ENGINEER OF THE SERVICE AUTHORITIES. ALL SERVICE MUST BE VERIFIED ON SITE PRIOR TO ANY WORK BEING UNDERTAKEN. VERIS AUSTRALIA PTY LTD BEAR NO RESPONSIBILITY FOR THE ACCURACY OR COMPLETENESS OF THE SERVICES SHOWN HEREIN.
 - MOUSE DATE & OTHER HEIGHTS HAVE BEEN OBTAINED BY AN INDIRECT METHOD AND ARE ACCURATE FOR PLANNING PURPOSES ONLY
 - ADJOINING BUILDINGS AND DWELLINGS HAVE BEEN PLOTTED FOR DIMENSIONAL PURPOSES ONLY AND SPECIFIC DETAILS IF CRITICAL, WILL REQUIRE FURTHER SURVEY
 - THE DIAMETER (Ø), SPREAD (S) & HEIGHT (H) OF EACH TREE IS INDICATED ONLY AND SPECIFIC DETAILS IF CRITICAL, WILL REQUIRE FURTHER SURVEY
 - CONTIGUOUS ARE AN INDICATION OF THE SURVEYOR ONLY. SPOT LEVELS SHOULD BE USED IF DETAILED DESIGN IS TO BE UNDERTAKEN
 - CONTOUR INTERVAL: 0.1 METRE

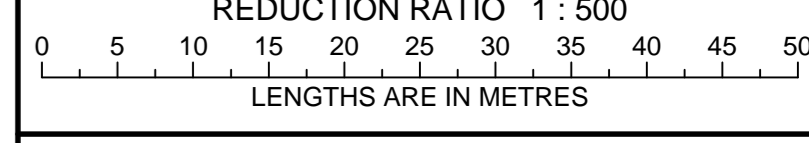
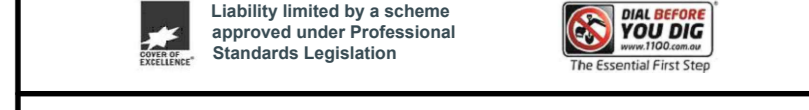
LEGEND OF TYPICAL CODES

Code	Description	Code	Description
AE	ARCHITECTURAL ENLIGHTENMENT	MED	METAL LID
AP	ALIGNMENT PIN	MS	MANUAL SURFACE
BA	BALCONY	OCC	STRUCTURE
BAN	BOTTOM OF ANNEX	OCT	OPTIC FIBRE
BB	BOTTOM OF BANK	PC	PRIVATE CROSSING
BC	BOTTOM OF CHIMNEY	PE	PROFESSIONAL CROSSING
BD	BOTTOM OF DOOR	PERG	PERGOLA
BE	BOTTOM OF FENCE	PM	PERMANENT MARK
BH	BOTTOM OF HYDRANT	PP	POWER POLE
BF	BOTTOM OF BENCH	ROK	ROCK
BR	BOTTOM OF KESB	RYL	RAILWAY
BS	BOTTOM OF BALCONY	RM	REFERENCE MARK
BU	BOTTOM MARK	RF	ROOF FLOOR
BUB	BOTTOM OF BUILDING	RON	CONCRETE RAIL
BUK	BOTTOM OF ROCK	SER	SEWER
BSB	BOTTOM OF ROOF	SIR	SIRUB
BSM	BOTTOM OF RETAINING WALL	SIP	SEWER INSPECTION PIT
BSV	BOTTOM OF STEEP	SLN	SEWER LAMP HOLE
BW	BOTTOM OF WINDOW	SML	SEWER MANHOLE
BWM	BOTTOM OF WALL	SP	STOP POST
CA	CHIMNEY	SDM	STATE SURVEY MARK
CAH	CHIMNEY	SV	STOP VALVE
CL	CONCRETE	SW	STOP WATER
CLO	CONCRETE LID	TA	TOP OF ANNEX
COL	COLLUM	TB	TOP OF BANK
COM	COMMUNICATIONS PIT	TRSD	TOP OF BRIDGE
COMC	CONCRETE	TRU	TRUSSEL
CPT	CARPENT	TCH	TOP OF CHIMNEY
D	DOOR	TCL	TOP OF DRIVE DECK
DB	DISH DRAIN	TEL	TELECOM PIT
DH	DRAIN HOLE	TELP	TELECOM PILE
DHW	DRAIN HOLE & MINGS	TF	TOP OF FENCE
DWY	DRAINAGE	TR	TOP OF DRIVE
EB	EDGE OF BRIMSON	THR	TOP OF HANGAR
EBR	ELECTRICITY BOX	TL	TRAFFIC LIGHT
EC	EDGE OF CONCRETE	TK	TOP OF KERB
ED	EDGE OF DOOR	TL	TRAFFIC ISLAND
EG	EDGE OF GARDEN	TV	PAVING TRENCH MACHINE
EGC	ELECTRICITY PIT	UP	TOP OF DRIVE
EP	EDGE OF PATH	TRF	TOP OF ROOF
ER	EDGE OF ROAD	TRM	TOP OF ROAD
FL	FLOOR LEVEL	TSM	TOP OF RETAINING WALL
FF	FENCED FLOOR LEVEL	TM	TOP OF WALL
FP	FENCE POST	TN	TOP OF STEEP
FS	FENCE POST	TRN	TOP OF WINDOW
GS	GAS OUTLET	UN	UNKNOWN SERVICE
GK	GAS KITCHEN	UNW	UNDERSIDE OF ANNEX
GL	GAS METER	UR	UNKNOWN SERVICE
GPH	GAS METER	USB	UNDERSIDE OF BEAM
GPM	GAS METER	USC	UNDERSIDE OF CEILING
HGD	HIGH POWERED GAS	USZ	UNDERSIDE OF LAKE
HR	HIGH RISE	USE	UNDERSIDE OF EASE
I	INVERT LEVEL	USV	UNDERSIDE OF VALVE
IB	INVERT LEVEL	V	VOID
KNO	KERB AND GUTTER	VH	VEHICLE
LN	LINER	VC	VEHICLE CROSSING
LH	LAMP POST	W	WATER
M	MANHOLE	WM	WATER METER

LEGEND OF TYPICAL SERVICES

Code	Description	Code	Description
—C	COMMUNICATIONS CABLE	—RW	RECYCLED WATER
—CWP	COSMIC COUNTERMETER PIPES	—RW	RECYCLED WATER
—E	UNDERGROUND ELECTRICITY	—R	RANGE & WASTING SERVICES
—E—O	UNDERGROUND ELECTRICITY & OPTICAL CABLES	—S	SEWER
—F	FIRE SERVICE	—SO	SEWER OUTFALL
—G	GAS LINE	—SI	SHARED TRENCH
—G	GAS LINE & ELECTRICITY CABLES	—SM	SOME WATER
—M	NATURAL BRICK DRIP CABLES	—S—CK	STORMWATER CHECK
—N	NATURAL BRICK DRIP CABLES	—T	TELNET CABLES
—NC	NATURAL BRICK DRIP CABLES	—T—	TELNET & GAS CABLES
—O	OPTICAL CABLE	—U	UNKNOWN SERVICE
—OP	OPTICAL CABLE	—V	WOOD CABLE
—PE	PRIVATE ELECTRICITY	—W	WATER CABLES
—PS	PRIVATE SERVICE	—W	WATER SUPPLY
—PW	PRIVATE WATER	—W	WATER MAIN

- ALL UNDERGROUND SERVICE INFORMATION PROVIDED OF GENERAL POSITION AND SURFACE COVER OPTICS NOTED ON THE PLAN ARE APPROXIMATE ONLY
- ALL UNDERGROUND SERVICE INFORMATION HAS BEEN COMPILED FROM SERVICE AUTHORITY PLANS PROVIDED BY THE AUTHORITIES
- THE LOCATION OF SERVICES BETWEEN SURVEYED POINTS (OR INDICATED) HAS BEEN SHOWN DIMENSIONALLY ONLY USING THE SERVICE ENGINEER'S PROVIDED. THE EXACT LOCATION OF THESE SERVICES BETWEEN THE SURVEYED POINTS MUST BE VERIFIED PRIOR TO ANY EXCAVATION OR ANY WORKING & SERVICED
- ALL DIMENSIONAL INFORMATION, INCLUDING A PRELIMINARY CROSS-SECTION MUST CONTACT THE SERVICE AUTHORITIES, IN ACCORDANCE WITH STANDARD TIA BEFORE YOU 'GO LIVE' PROCEDURES PRIOR TO UNDERTAKING ANY WORK WITHIN THE SCOPE OF THE SERVICE LINES TO VERIFY THE POSITION OF THE SERVICE LINES.



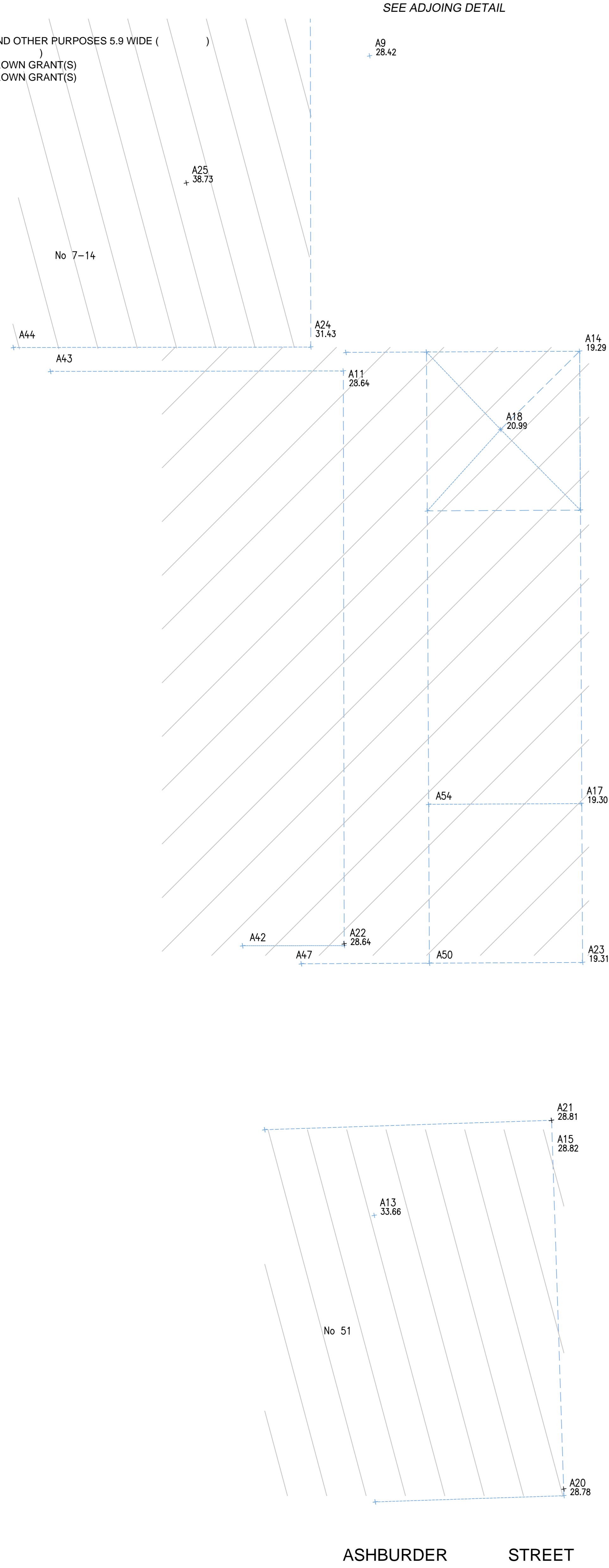
CLIENT: ROYAL FAR WEST

TITLE No: REF:202018
DATUM A.H.D.: ISSUE:3
DATE OF SURVEY: 21.01.2020 **ISSUE DATE:** 07.02.2020
SURVEYOR: LS **SHEET SIZE:** A0
DRAFTER: DW **SHEET 12 OF 15 SHEETS**

PLAN SHOWING ADJOINING PROPERTIES AND PHOTO POINTS AT No 12-22 WENTWORTH STREET AND No 19-21 SOUTH STEYNE MANLY

- (E) PROPOSED EASEMENT FOR ELECTRICITY AND OTHER PURPOSES 5.9 WIDE ()
- (R) EASEMENT FOR MAINTENANCE 1.83 WIDE ()
- (X) RESERVATIONS AND CONDITIONS IN THE CROWN GRANT(S)
- (Y) RESERVATIONS AND CONDITIONS IN THE CROWN GRANT(S)
- (Z) EASEMENT FOR SUPPORT BK 2500 No.392

TOTAL SITE AREA 6398.4m²

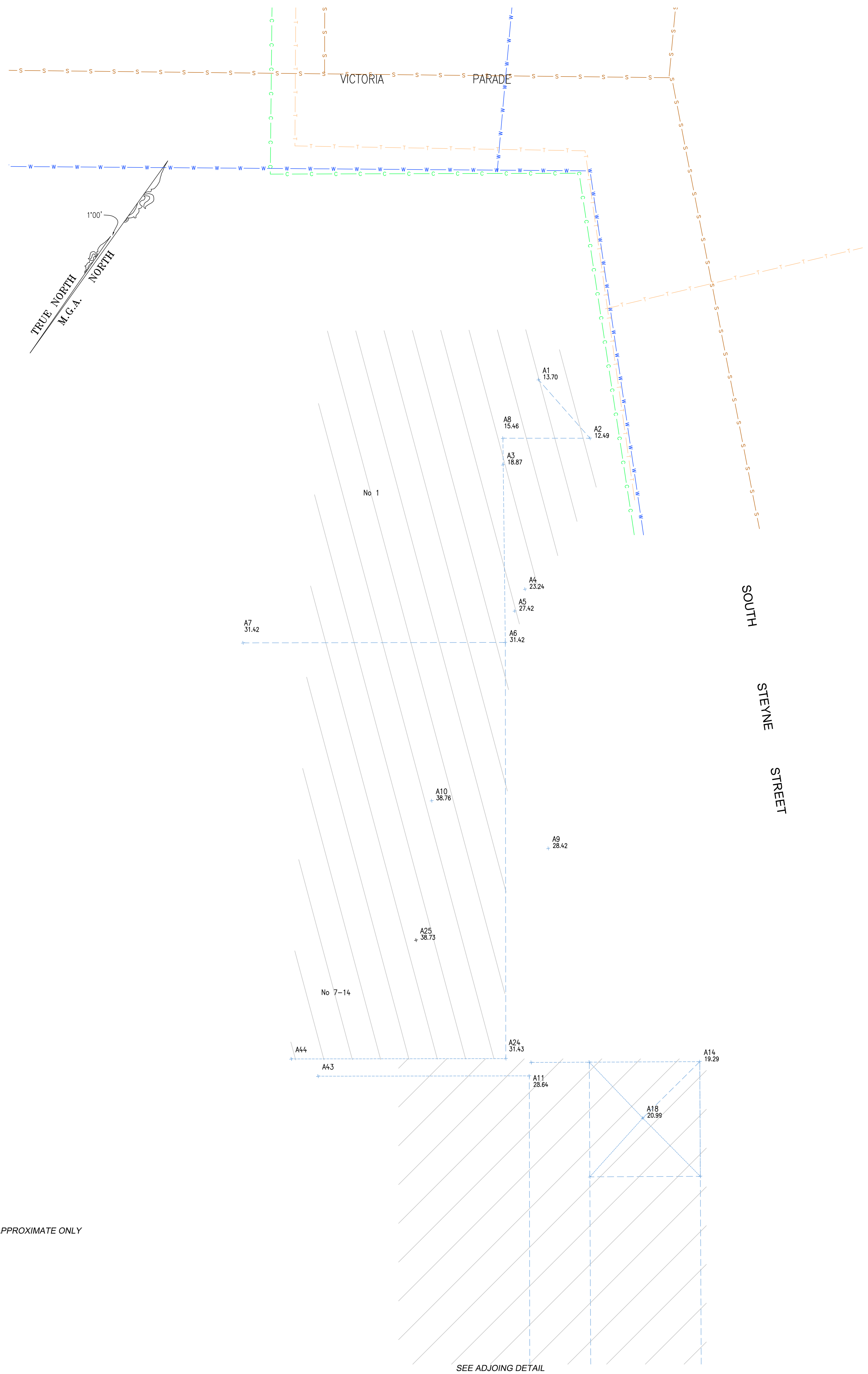


SEE ADJOINING DETAIL

ASHBURDER STREET

SOUTH STEYNE STREET

NOTE:
HATCHING APPROXIMATE ONLY



SEE ADJOINING DETAIL

ISSUE	DATE	AMENDMENT	BY
2	14.02.20	DESCRIBE NOTES ADDED	DW/LS
3	03.03.20	PHOTO POINTS SHEETS ADDED	DW/PH

- TYPICAL NOTES:
- ORDER OF LEVELS IN SET 3.111 AND
 - BOUNDARY ARE OR OF OLDED NOTES
 - A SATISFACTION SURVEY HAS BEEN UNDERTAKEN
 - BOUNDARIES SHOULD BE MARKED PRIOR TO ANY WORKS BEING CARRIED OUT ON OR NEAR THE BOUNDARIES
 - RELATIONSHIP OF IMPROVEMENTS AND DECK TO BOUNDARIES IS INDICATED ONLY AND SPECIFIC DETAILS OF CRITICAL WALL REQUIRE FURTHER SURVEY
 - SERVICES SHOWN ARE BASED ON VISIBLE SURFACE INDICATORS EXISTENT AT THE DATE OF SURVEY AND THE RELEVANT SERVICE ENGINEER AT THE MARCH ADJACENT. ALL SERVICE MUST BE CHECKED ON SITE PRIOR TO ANY WORK BEING UNDERTAKEN. VERIS AUSTRALIA PTY LTD. WILL BE RESPONSIBLE FOR THE ACCURACY OR COMPLETENESS OF THE SERVICES SHOWN HEREON.
 - HOUSE DATE & OUTER HEIGHTS HAVE BEEN OBTAINED BY AN INDIRECT METHOD AND ARE ACCURATE FOR CHANGING PURPOSES ONLY
 - ADJOINING BUILDINGS AND DWELLINGS HAVE BEEN PLOTTED FOR DIMENSIONAL PURPOSES ONLY AND SPECIFIC DETAILS OF CRITICAL WALL REQUIRE FURTHER SURVEY
 - THE DIAMETER (Ø), SPREAD (S) & HEIGHT (H) OF EACH TREE IS INDICATED ONLY AND SPECIFIC DETAILS OF CRITICAL WALL REQUIRE FURTHER SURVEY
 - CONTIGUOUS ARE AN INDICATOR OF THE TOPOGRAPHY ONLY. SPOT LEVELS SHOULD BE USED IF DETAILED DESIGN IS TO BE UNDERTAKEN
 - CONDUIT NUMBER, METRE

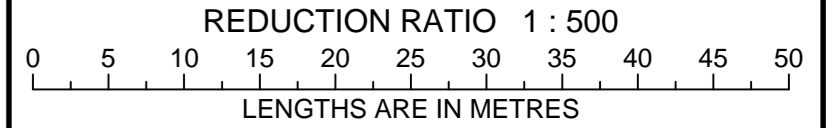
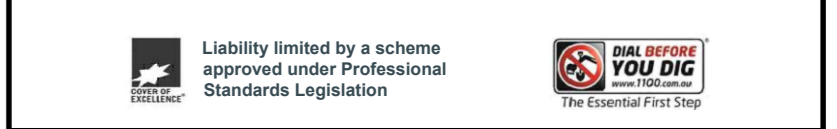
LEGEND OF TYPICAL CODES

AC - ARCHITECTURAL EMBELLISHMENT	MS - METAL LEE
AP - ALIGNMENT PIN	MS - MASONRY SURFACE
BALC - BALCONY	OCC - STRUCTURE
BAW - BOTTOM OF AWNING	OPI - OPTIC PIP
BB - BOTTOM OF BANK	PC - PINK CROSSING
BC - BOTTOM OF CHIMNEY	PED - PEDESTAL CROSSING
BD - BOTTOM OF DOOR	PERG - PERGOLA
BF - BOTTOM OF FINISH	PH - POWER METER
BH - BOTTOM OF HANDRAIL	PK - POWER POLE
BI - BROWN	ROK - ROCK
BL - BOTTOM OF KERB	RLY - RAILWAY
BW - BULLDOZER	RW - ROOF FENCE
BU - UNDERSIDE OF BUILDING	RON - CONCRETE RAIL
BULL - BULLDOZER	RON - ROOF
BR - BOTTOM OF ROOF	SAR - SHRUB
BS - BOTTOM OF RETAINING WALL	SCH - SEWER INSPECTION PIT
BT - BOTTOM OF STAIR	SH - SEWER LAMP HOLE
BU - BOTTOM OF WINDOW	SM - SEWER MANHOLE
CA - CHIMNEY	SP - SIGN POST
CL - CONCRETE	SW - STORM WATER
CLD - CONCRETE LID	SV - STOP VALVE
CO - COLLAR	TA - TOP OF AWNING
COM - COMMUNICATIONS PIT	TAH - TOP OF BRIDGE
CONC - CONCRETE	TEL - TELEPHONE
CPT - CARPORT	TEL - TELEPHONE PILLAR
D - DOOR	TEL - TELEPHONE PILE
DB - DISH DRINK	TEL - TELEPHONE PIT
DH - DRILL HOLE	TEL - TELEPHONE POST
DW - DRAINAGE	TK - TOP OF KERB
ED - EDGE OF BRICKWORK	TR - TOP OF OUTLET
EER - ELECTRICITY ROD	TR - TOP OF HANDRAIL
EO - EDGE OF CONCRETE	TR - TRAFFIC LIGHT
EG - EDGE OF GARDEN	TR - TOP OF BRACKET
EP - EDGE OF PATH	TR - TOP OF ROOF
EP - EDGE OF ROAD	TR - TOP OF STEPS
F - FLOOR LEVEL	TRW - TOP OF RETAINING WALL
FN - FINISHED FLOOR LEVEL	TS - TOP OF WALL
FP - FINISH POST	TW - TOP OF WINDOW
GA - GAS PIPE	U - UNDERGIRD
GL - GAS METER	UL - UNDERGIRD
GPS - GAS METER	UN - UNDERGIRD
GPS - GAS METER	US - UNDERGIRD
GPS - GAS METER	US - UNDERGIRD
GPS - GAS METER	US - UNDERGIRD

LEGEND OF TYPICAL SERVICES

— C — COMMUNICATIONS CABLE	— RW — RECYCLED WATER
— CW — COSMIC STRANDED WIRE	— RM — REMOTE WATER
— E — UNDERGROUND ELECTRICITY	— RW — RECYCLED WATER
— EC — UNDERGROUND ELECTRICITY A	— S — SEWER
— OPT — OPTIC CABLE	— SD — SEWER OUTFALL
— F — FIRE SERVICE	— ST — SHARED TRENCH
— G — GAS LINE	— SW — SOME WATER
— GE — GAS LINE & ELECTRICITY CABLES	— SW — STORMWATER CHECK
— MW — METAL BROWN IRON CABLES	— T — TELNET CABLES
— NG — NATURAL GAS LINE	— T — TELNET CABLES
— OC — OPTIC CABLE	— U — UNKNOWN SERVICE
— OPT — OPTIC CABLE	— V — VOICE CABLES
— PS — PRIVATE ELECTRICITY	— W — WATER CABLES
— PS — PRIVATE GENERATOR	— W — WATER SUPPLY
— PM — PRIVATE WATER	— W — WATER MAIN
	— W — WATER METER

- ALL UNDERGROUND SERVICE INFORMATION PROVIDED IS GENERAL IN NATURE AND SURFACE COVER OPTICS MUST BE CHECKED ON THE DATE OF THE SURVEY ONLY
- ALL UNDERGROUND SERVICE INFORMATION HAS BEEN COMPILED FROM SERVICE AUTHORITY PLANS PROVIDED BY THE AUTHORITIES
- THE LOCATION OF SERVICES BETWEEN SURVEYED POINTS (AS INDICATED) HAVE BEEN SHOWN APPROPRIATELY ONLY USING THE SERVICE ENGINEER'S PROVIDED. THE EXACT LOCATION OF THESE SERVICES BETWEEN THE SURVEYED POINTS MUST BE CHECKED PRIOR TO ANY EXCAVATION OR ANY WORKING TO BE CARRIED OUT
- ALL CHANGING PROVIDERS, INCLUDING A PROJECT CONSULTANT MUST CONTACT THE VISIBLE AUTHORITIES, IN ACCORDANCE WITH STANDARD 'CALL BEFORE YOU DIG' PROCEDURES PRIOR TO UNDERMINING ANY SERVICES WITHIN THE AREAS OF THE SERVICE LINES TO VERIFY THE POSITION OF THE SERVICE LINES



CLIENT: ROYAL FAR WEST

TITLE No: DATE OF SURVEY: 21.01.2020	REF: 202018 ISSUE: 3 ISSUE DATE: 07.02.2020
SURVEYOR: LS	SHEET SIZE: A0
DRAFTER: DW	SHEET 14 OF 15 SHEETS

PLAN SHOWING ADJOINING
PROPERTIES AND PHOTO POINTS AT
No 12-22 WENTWORTH STREET AND
No 19-21 SOUTH STEYNE
MANLY

Veris Australia Pty Ltd
Suite 301, Level 3, 55 Holt Street
Surrey Hills NSW 2012
PO Box 1807
Surrey Hills NSW 2012
t: (02) 92724655
email: surreyhills@veris.com.au
web site: www.veris.com.au

(E) PROPOSED EASEMENT FOR ELECTRICITY AND OTHER PURPOSES 5.9 WIDE ()
(R) EASEMENT FOR MAINTENANCE 1.83 WIDE ()
(X) RESERVATIONS AND CONDITIONS IN THE CROWN GRANT(S)
(Y) RESERVATIONS AND CONDITIONS IN THE CROWN GRANT(S)
(Z) EASEMENT FOR SUPPORT BK 2500 No.392
TOTAL SITE AREA 6398.4m²

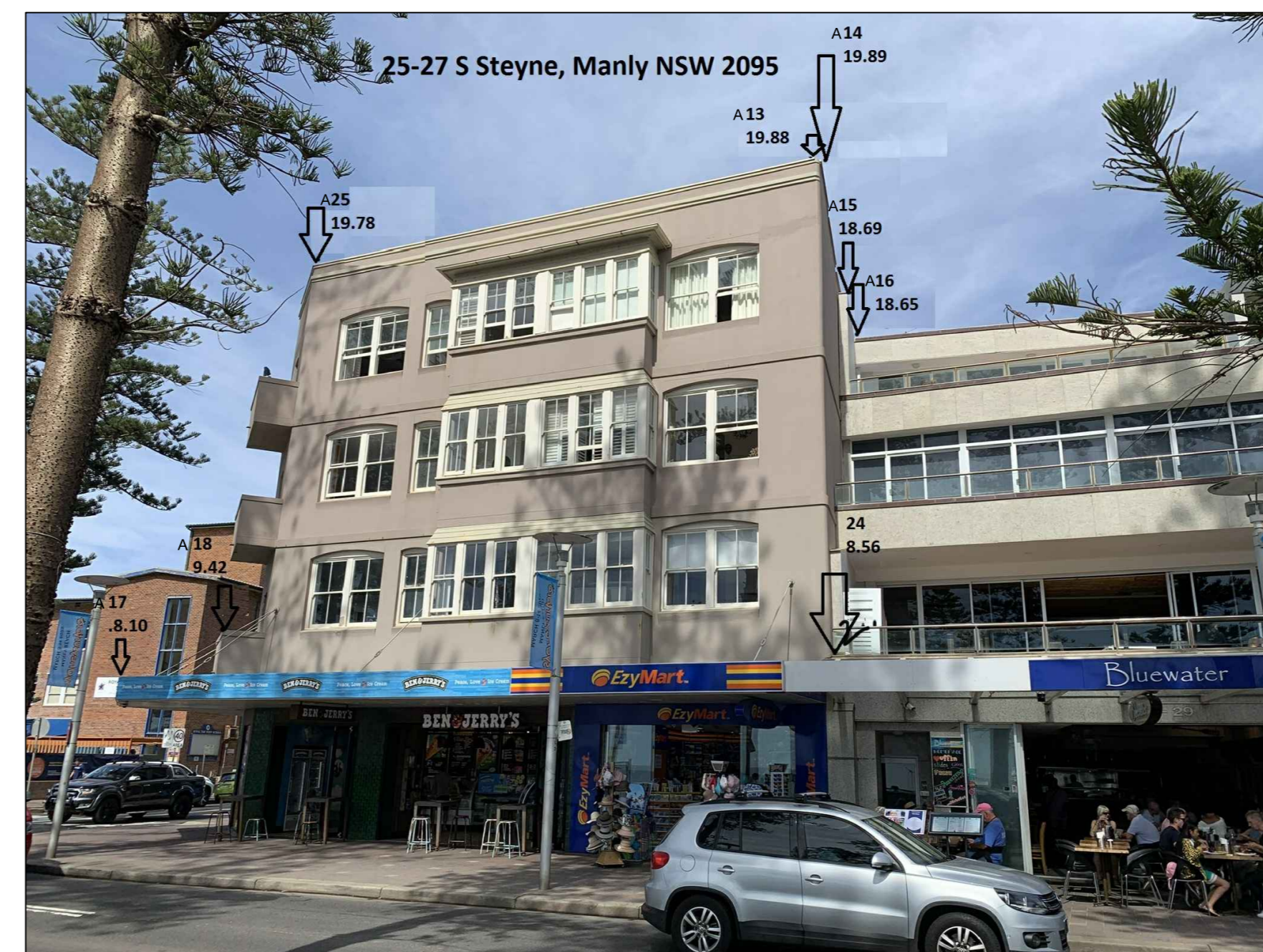


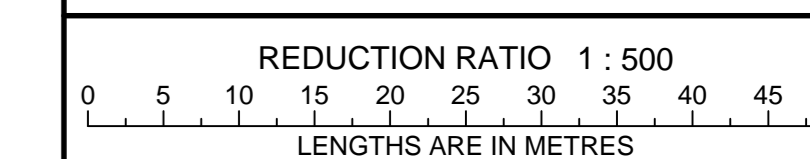
Table with 4 columns: ISSUE, DATE, AMENDMENT, BY. Contains three entries regarding descriptive notes and photo points.

TYPICAL NOTES:
1. ORDER OF LEVELS IN NOT IN 5.111 AND
2. BOUNDARY BEING SHOWN BY THIS PLAN
3. A SUFFICIENT BOUNDARY SURVEY HAS BEEN UNDERTAKEN
4. BOUNDARIES SHOULD BE MARKED PRIOR TO ANY WORKS BEING CARRIED OUT ON OR NEAR THE BOUNDARIES
5. RELOCATION OF IMPROVEMENTS AND DEMOLITION OF IMPROVEMENTS SHALL ONLY AND SPECIFIC DETAILS OF OTHERS WILL REQUIRE FURTHER SURVEY
6. SERVICES SHOWN ARE BASED ON VISIBLE SURFACE INDICATORS EXCEPT AT THE DATE OF SURVEY AND THE RELEVANT SERVICE ENGINEER AT THE ABOVE ADDRESSES. ALL SERVICE MUST BE VERIFIED ON SITE PRIOR TO ANY WORK BEING UNDERTAKEN. VERIS AUSTRALIA PTY LTD. SHALL BE RESPONSIBLE FOR THE ACCURACY OR COMPLETENESS OF THE SERVICES SHOWN HEREIN.

LEGEND OF TYPICAL CODES table listing various abbreviations such as AE, A1, A2, etc. corresponding to architectural and engineering terms.

LEGEND OF TYPICAL SERVICES table listing abbreviations such as C, SWP, E, etc. corresponding to utility services like communication cable, water, gas, and electricity.

1. ALL UNDERGROUND SERVICE INFORMATION INCLUDING OF GENERAL POSITION AND SURFACE COVER OPTION MUST BE IN THE PLAN AND APPROVED ONLY
2. ALL UNDERGROUND SERVICE INFORMATION HAS BEEN COMPILED FROM SERVICE AUTHORITY PLANS PROVIDED BY THE AUTHORITIES
3. THE LOCATION OF SERVICES BETWEEN SURVEYED POINTS (SEE INDICES) HAS BEEN SHOWN UNCORRECTEDLY ONLY USING THE SERVICE SHOWING AS PROVIDED. THE EXACT LOCATION OF THESE SERVICES BETWEEN THE SURVEYED POINTS MUST BE VERIFIED PRIOR TO ANY EXCAVATION OR WORK ON MANHOLES & OVERHEADS AND THE POSIBILITY OF THE OCCURRENCE OF FURTHER UNIDENTIFIED SERVICES
4. ALL CHANGING, RELOCATING, REMOVING A PROJECT CONSULTANT MUST CONTACT THE SERVICES AUTHORITIES, IN ACCORDANCE WITH STANDARD TIAL BEFORE YOU DO PROCEDURES PRIOR TO UNDERMINING ANY WORKS WITHIN THE VICINITY OF THE SERVICE LINE TO VERIFY THE POSITION OF THE SERVICE LINE.



CLIENT: ROYAL FAR WEST
TITLE NO: REF: 2020/18
DATE OF SURVEY: 21.01.2020 ISSUE: 3
SURVEYOR: LS ISSUE DATE: 07.02.2020
DRAFTER: DW SHEET SIZE: A0
SHEET 15 OF 15 SHEETS

PLAN SHOWING ADJOINING PROPERTIES AND PHOTO POINTS AT No 12-22 WENTWORTH STREET AND No 19-21 SOUTH STEYNE MANLY

Veris logo and contact information for Veris Australia Pty Ltd, including address in Strathfield, NSW, Australia.