



Imagine
Create

CALDERWOOD URBAN DEVELOPMENT PROJECT

LAND OWNERSHIP OPTIONS

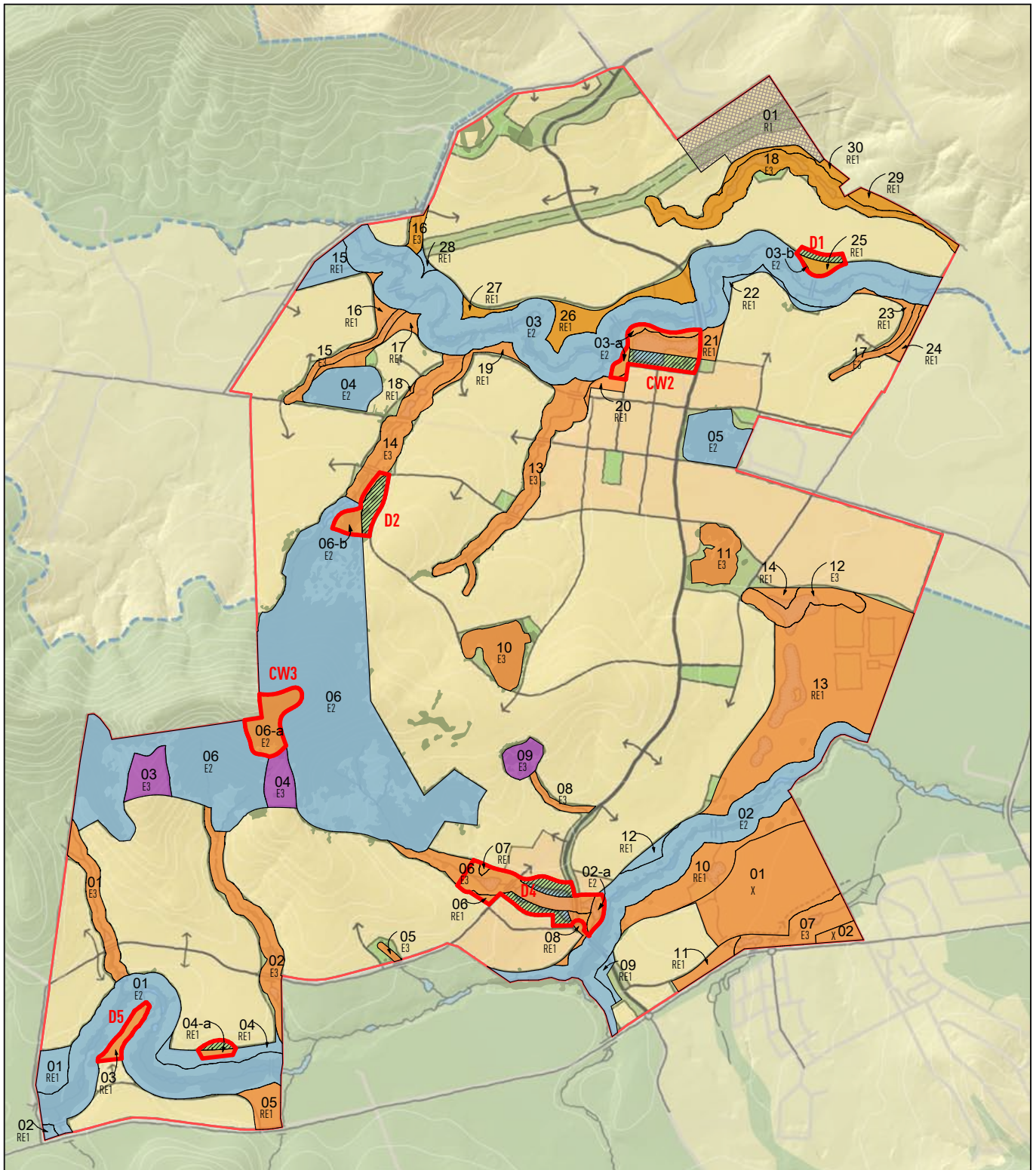
Options Analysis

Concept Plan and State Significant Site Listing

Delfin Lend Lease

August 2010

Area					Purpose							Ownership Options				Preferred Ownership		
					Higher Order Park	Local Park	Paths	WSUD	Water Bodies	Drainage (Riparian)	ESL	State	LCA	Private	Trust	Key	Owner	Justification
Zoning	Number	Location	Area (ha)	Open Spce Code/s														
E2	01	Macquarie Rivulet	16.5	C15	<div></div>	<div></div>	<div></div>	<div></div>	<div></div>	<div></div>	<div></div>	<div></div>	<div></div>	<div></div>	<div></div>	<div></div>	Dept. of Lands / Bio Bank / Trust	Current owner for portion
E2	02	Macquarie Rivulet	14.5	C12 C13	<div></div>	<div></div>	<div></div>	<div></div>	<div></div>	<div></div>	<div></div>	<div></div>	<div></div>	<div></div>	<div></div>	<div></div>	Dept. of Lands / Bio Bank / Trust	Current owner for portion
E2	02-a	Macquarie Rivulet	0.5	D4	<div></div>	<div></div>	<div></div>	<div></div>	<div></div>	<div></div>	<div></div>	<div></div>	<div></div>	<div></div>	<div></div>	<div></div>	SCC	Drainage, District Park & Water Quality
E2	03	Marshall Mount Creek	33.6	D1 L2 L4 C5 C6	<div></div>	<div></div>	<div></div>	<div></div>	<div></div>	<div></div>	<div></div>	<div></div>	<div></div>	<div></div>	<div></div>	<div></div>	Dept. of Lands / Bio Bank / Trust	Current owner for portion
E2	03-a	Marshall Mount Creek	0.9	CW2	<div></div>	<div></div>	<div></div>	<div></div>	<div></div>	<div></div>	<div></div>	<div></div>	<div></div>	<div></div>	<div></div>	<div></div>	SCC	Drainage, Citywide Park & Water Quality
E2	03-b	Marshall Mount Creek	0.1	D1	<div></div>	<div></div>	<div></div>	<div></div>	<div></div>	<div></div>	<div></div>	<div></div>	<div></div>	<div></div>	<div></div>	<div></div>	SCC	District Park
E2	04	Ecological Reserve	3.4	ER1	<div></div>	<div></div>	<div></div>	<div></div>	<div></div>	<div></div>	<div></div>	<div></div>	<div></div>	<div></div>	<div></div>	<div></div>	Dept. of Lands / Bio Bank / Trust	Ecological Value
E2	05	Ecological Reserve	4.2	ER2	<div></div>	<div></div>	<div></div>	<div></div>	<div></div>	<div></div>	<div></div>	<div></div>	<div></div>	<div></div>	<div></div>	<div></div>	Dept. of Lands / Bio Bank / Trust	Ecological Value
E2	06	Johnston's Spur	59.6	CB1 CB2	<div></div>	<div></div>	<div></div>	<div></div>	<div></div>	<div></div>	<div></div>	<div></div>	<div></div>	<div></div>	<div></div>	<div></div>	Dept. of Lands / Bio Bank / Trust	Ecological Value
E2	06-a	Johnston's Spur	2.6	CW3	<div></div>	<div></div>	<div></div>	<div></div>	<div></div>	<div></div>	<div></div>	<div></div>	<div></div>	<div></div>	<div></div>	<div></div>	SCC	Citywide Park
E2	06-b	Johnston's Spur	0.7	D2	<div></div>	<div></div>	<div></div>	<div></div>	<div></div>	<div></div>	<div></div>	<div></div>	<div></div>	<div></div>	<div></div>	<div></div>	SCC	Drainage, District Park & Water Quality
E3	01	Drainage Line	2.9	C16	<div></div>	<div></div>	<div></div>	<div></div>	<div></div>	<div></div>	<div></div>	<div></div>	<div></div>	<div></div>	<div></div>	<div></div>	SCC	Drainage
E3	02	Drainage Line	4.4	C17	<div></div>	<div></div>	<div></div>	<div></div>	<div></div>	<div></div>	<div></div>	<div></div>	<div></div>	<div></div>	<div></div>	<div></div>	SCC	Drainage
E3	03		2.2		<div></div>	<div></div>	<div></div>	<div></div>	<div></div>	<div></div>	<div></div>	<div></div>	<div></div>	<div></div>	<div></div>	<div></div>	Eco low impact development	Ecological Value
E3	04		1.8		<div></div>	<div></div>	<div></div>	<div></div>	<div></div>	<div></div>	<div></div>	<div></div>	<div></div>	<div></div>	<div></div>	<div></div>	Eco low impact development	Ecological Value
E3	05	Drainage Line	0.2	L12	<div></div>	<div></div>	<div></div>	<div></div>	<div></div>	<div></div>	<div></div>	<div></div>	<div></div>	<div></div>	<div></div>	<div></div>	SCC	Drainage
E3	06	Drainage Line	4.4	CB1 D4	<div></div>	<div></div>	<div></div>	<div></div>	<div></div>	<div></div>	<div></div>	<div></div>	<div></div>	<div></div>	<div></div>	<div></div>	SCC	Drainage
E3	07	Hazleton Creek	3.1	C14	<div></div>	<div></div>	<div></div>	<div></div>	<div></div>	<div></div>	<div></div>	<div></div>	<div></div>	<div></div>	<div></div>	<div></div>	SCC	Drainage
E3	08	Drainage Line	0.7	C11	<div></div>	<div></div>	<div></div>	<div></div>	<div></div>	<div></div>	<div></div>	<div></div>	<div></div>	<div></div>	<div></div>	<div></div>	SCC	Drainage
E3	09	Vegetation	1.4	C11	<div></div>	<div></div>	<div></div>	<div></div>	<div></div>	<div></div>	<div></div>	<div></div>	<div></div>	<div></div>	<div></div>	<div></div>	Eco low impact development	Ecological Value
E3	10	Vegetation	4.2	ER3 L10	<div></div>	<div></div>	<div></div>	<div></div>	<div></div>	<div></div>	<div></div>	<div></div>	<div></div>	<div></div>	<div></div>	<div></div>	SCC	Ecological Value
E3	11	Vegetation	2.7	ER4	<div></div>	<div></div>	<div></div>	<div></div>	<div></div>	<div></div>	<div></div>	<div></div>	<div></div>	<div></div>	<div></div>	<div></div>	SCC	Ecological Value
E3	12	Drainage Line	2.8	S1 C12	<div></div>	<div></div>	<div></div>	<div></div>	<div></div>	<div></div>	<div></div>	<div></div>	<div></div>	<div></div>	<div></div>	<div></div>	SCC	Drainage
E3	13	Drainage Line	6.2	L7 C10	<div></div>	<div></div>	<div></div>	<div></div>	<div></div>	<div></div>	<div></div>	<div></div>	<div></div>	<div></div>	<div></div>	<div></div>	SCC	Drainage, Local Park & Water Quality
E3	14	Drainage Line	4.8	CB1 D2 C9	<div></div>	<div></div>	<div></div>	<div></div>	<div></div>	<div></div>	<div></div>	<div></div>	<div></div>	<div></div>	<div></div>	<div></div>	SCC	Drainage
E3	15	Drainage Line	1.4	C8	<div></div>	<div></div>	<div></div>	<div></div>	<div></div>	<div></div>	<div></div>	<div></div>	<div></div>	<div></div>	<div></div>	<div></div>	SCC	Drainage, Local Park & Water Quality
E3	16	Drainage Line	0.6	C2	<div></div>	<div></div>	<div></div>	<div></div>	<div></div>	<div></div>	<div></div>	<div></div>	<div></div>	<div></div>	<div></div>	<div></div>	WCC	Drainage
E3	17	Drainage Line	1.0	L4 C7	<div></div>	<div></div>	<div></div>	<div></div>	<div></div>	<div></div>	<div></div>	<div></div>	<div></div>	<div></div>	<div></div>	<div></div>	SCC	Drainage, Local Park & Water Quality
E3	18	Drainage Line	15.3	L1 C3	<div></div>	<div></div>	<div></div>	<div></div>	<div></div>	<div></div>	<div></div>	<div></div>	<div></div>	<div></div>	<div></div>	<div></div>	WCC	Drainage
RE1	01	Macquarie Rivulet	1.6	C15	<div></div>	<div></div>	<div></div>	<div></div>	<div></div>	<div></div>	<div></div>	<div></div>	<div></div>	<div></div>	<div></div>	<div></div>	Dept. of Lands / Bio Bank / Trust	Contributes to Creek Corridor
RE1	02	Macquarie Rivulet	0.2	C15	<div></div>	<div></div>	<div></div>	<div></div>	<div></div>	<div></div>	<div></div>	<div></div>	<div></div>	<div></div>	<div></div>	<div></div>	Dept. of Lands / Bio Bank / Trust	Contributes to Creek Corridor
RE1	03	Macquarie Rivulet	1.0	D5	<div></div>	<div></div>	<div></div>	<div></div>	<div></div>	<div></div>	<div></div>	<div></div>	<div></div>	<div></div>	<div></div>	<div></div>	SCC	District Park
RE1	04	Macquarie Rivulet	1.9	C15	<div></div>	<div></div>	<div></div>	<div></div>	<div></div>	<div></div>	<div></div>	<div></div>	<div></div>	<div></div>	<div></div>	<div></div>	Dept. of Lands / Bio Bank / Trust	Contributes to Creek Corridor
RE1	04-a	Macquarie Rivulet	0.3	L13	<div></div>	<div></div>	<div></div>	<div></div>	<div></div>	<div></div>	<div></div>	<div></div>	<div></div>	<div></div>	<div></div>	<div></div>	SCC	Local Park & Water Quality
RE1	05	Macquarie Rivulet	1.6	C15	<div></div>	<div></div>	<div></div>	<div></div>	<div></div>	<div></div>	<div></div>	<div></div>	<div></div>	<div></div>	<div></div>	<div></div>	SCC	Drainage
RE1	06	VC District Park	0.2	D4	<div></div>	<div></div>	<div></div>	<div></div>	<div></div>	<div></div>	<div></div>	<div></div>	<div></div>	<div></div>	<div></div>	<div></div>	SCC	District Park
RE1	07	VC District Park	0.1	D4	<div></div>	<div></div>	<div></div>	<div></div>	<div></div>	<div></div>	<div></div>	<div></div>	<div></div>	<div></div>	<div></div>	<div></div>	SCC	District Park
RE1	08	Macquarie Rivulet	0.6	D4 C12	<div></div>	<div></div>	<div></div>	<div></div>	<div></div>	<div></div>	<div></div>	<div></div>	<div></div>	<div></div>	<div></div>	<div></div>	SCC	District Park and Drainage
RE1	09	Yellow Rock Creek	0.5	C13	<div></div>	<div></div>	<div></div>	<div></div>	<div></div>	<div></div>	<div></div>	<div></div>	<div></div>	<div></div>	<div></div>	<div></div>	Dept. of Lands / Bio Bank / Trust	Contributes to Creek Corridor
RE1	10	Macquarie Rivulet	8.9	L8 C13	<div></div>	<div></div>	<div></div>	<div></div>	<div></div>	<div></div>	<div></div>	<div></div>	<div></div>	<div></div>	<div></div>	<div></div>	SCC	Local Park & Water Quality
RE1	11	Hazleton Creek	2.0	C14	<div></div>	<div></div>	<div></div>	<div></div>	<div></div>	<div></div>	<div></div>	<div></div>	<div></div>	<div></div>	<div></div>	<div></div>	SCC	Drainage
RE1	12	Macquarie Rivulet	0.6	C12	<div></div>	<div></div>	<div></div>	<div></div>	<div></div>	<div></div>	<div></div>	<div></div>	<div></div>	<div></div>	<div></div>	<div></div>	Dept. of Lands / Bio Bank / Trust	Contributes to Creek Corridor
RE1	13	Sports Ovals	23.4	L11 S1 C12	<div></div>	<div></div>	<div></div>	<div></div>	<div></div>	<div></div>	<div></div>	<div></div>	<div></div>	<div></div>	<div></div>	<div></div>	SCC	Local Park & Water Quality
RE1	14	Sports Ovals	0.6	C12	<div></div>	<div></div>	<div></div>	<div></div>	<div></div>	<div></div>	<div></div>	<div></div>	<div></div>	<div></div>	<div></div>	<div></div>	SCC	District Park
RE1	15	Marshall Mount Creek	1.6	C6	<div></div>	<div></div>	<div></div>	<div></div>	<div></div>	<div></div>	<div></div>	<div></div>	<div></div>	<div></div>	<div></div>	<div></div>	Dept. of Lands / Bio Bank / Trust	Contributes to Creek Corridor
RE1	16	Marshall Mount Creek	0.7	C6 C8	<div></div>	<div></div>	<div></div>	<div></div>	<div></div>	<div></div>	<div></div>	<div></div>	<div></div>	<div></div>	<div></div>	<div></div>	SCC	Local Park & Water Quality
RE1	17	Marshall Mount Creek	1.2	L9 C8	<div></div>	<div></div>	<div></div>	<div></div>	<div></div>	<div></div>	<div></div>	<div></div>	<div></div>	<div></div>	<div></div>	<div></div>	SCC	Local Park & Water Quality
RE1	18		0.1	C9	<div></div>	<div></div>	<div></div>	<div></div>	<div></div>	<div></div>	<div></div>	<div></div>	<div></div>	<div></div>	<div></div>	<div></div>	SCC	Drainage
RE1	19	Marshall Mount Creek	0.8	C9 C6	<div></div>	<div></div>	<div></div>	<div></div>	<div></div>	<div></div>	<div></div>	<div></div>	<div></div>	<div></div>	<div></div>	<div></div>	SCC	Contributes to Creek Corridor
RE1	20		0.6	C10	<div></div>	<div></div>	<div></div>	<div></div>	<div></div>	<div></div>	<div></div>	<div></div>	<div></div>	<div></div>	<div></div>	<div></div>	SCC	Contributes to Creek Corridor
RE1	21	Marshall Mount Creek	2.5	CW2 C6	<div></div>	<div></div>	<div></div>	<div></div>	<div></div>	<div></div>	<div></div>	<div></div>	<div></div>	<div></div>	<div></div>	<div></div>	SCC	District Park
RE1	22	Marshall Mount Creek	0.7	L4 C6	<div></div>	<div></div>	<div></div>	<div></div>	<div></div>	<div></div>	<div></div>	<div></div>	<div></div>	<div></div>	<div></div>	<div></div>	Dept. of Lands / Bio Bank / Trust	Contributes to Creek Corridor
RE1	23	Marshall Mount Creek	0.6	C6 C7	<div></div>	<div></div>	<div></div>	<div></div>	<div></div>	<div></div>	<div></div>	<div></div>	<div></div>	<div></div>	<div></div>	<div></div>	SCC	Drainage and Water Quality
RE1	24		0.4	C7	<div></div>	<div></div>	<div></div>	<div></div>	<div></div>	<div></div>	<div></div>	<div></div>	<div></div>	<div></div>	<div></div>	<div></div>	SCC	Drainage and Water Quality
RE1	25		0.5	D1	<div></div>	<div></div>	<div></div>	<div></div>	<div></div>	<div></div>	<div></div>	<div></div>	<div></div>	<div></div>	<div></div>	<div></div>	WCC	District Park
RE1	26		3.5	L3 C5	<div></div>	<div></div>	<div></div>	<div></div>	<div></div>	<div></div>	<div></div>	<div></div>	<div></div>	<div></div>	<div></div>	<div></div>	WCC	Local Park & Water Quality
RE1	27		0.5	L4 C5	<div></div>	<div></div>	<div></div>	<div></div>	<div></div>	<div></div>	<div></div>	<div></div>	<div></div>	<div></div>	<div></div>	<div></div>	WCC	Local Park & Water Quality
RE1	28		0.2	C2 C5	<div></div>	<div></div>	<div></div>	<div></div>	<div></div>	<div></div>	<div></div>	<div></div>	<div></div>	<div></div>	<div></div>	<div></div>	Dept. of Lands / Bio Bank / Trust	Contributes to Creek Corridor
RE1	29		0.8	C4	<div></div>	<div></div>	<div></div>	<div></div>	<div></div>	<div></div>	<div></div>	<div></div>	<div></div>	<div></div>	<div></div>	<div></div>	WCC	Drainage and Water Quality
RE1	30		1.1	C4	<div></div>	<div></div>	<div></div>	<div></div>	<div></div>	<div></div>	<div></div>	<div></div>	<div></div>	<div></div>	<div></div>	<div></div>	WCC	Drainage and Water Quality
R1	01		7.8	C4	<div></div>	<div></div>	<div></div>	<div></div>	<div></div>	<div></div>	<div></div>	<div></div>	<div></div>	<div></div>	<div></div>	<div></div>	Private	
X	01		12.6		<div></div>	<div></div>	<div></div>	<div></div>	<div></div>	<div></div>	<div></div>	<div></div>	<div></div>	<div></div>	<div></div>	<div></div>	SCC	
X	02		0.8		<div></div>	<div></div>	<div></div>	<div></div>	<div></div>	<div></div>	<div></div>	<div></div>	<div></div>	<div></div>	<div></div>	<div></div>	SCC	

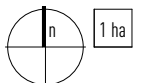


Preferred Open Space Ownership

Part 3A | Calderwood Urban Development Project

- State Government
Department of Lands
- Local Government
Shellharbour City Council
- Local Government
Wollongong City Council
- Private

- Removed from Public Ownership
- Other Significant Open Space
Associated with RE1, E2 or E3 Zoned land



m 0 100 500 1,000

Subject to verification and detailed site survey 1:20,000 @ A4 10m Contours March 2011