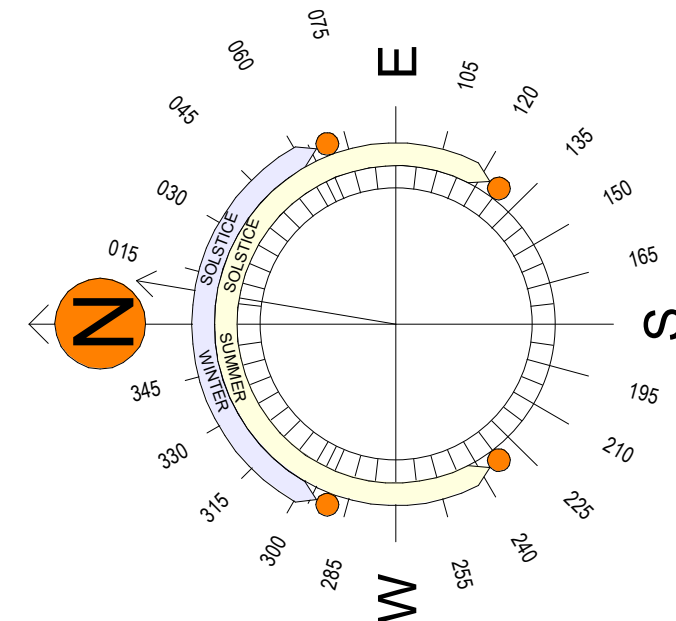




- 9am

APPROVED | PROPOSED

12 NOON



3pm



DIRECTOR

[illegible]

CLIENT  
SALAMANDER SHORES HOTEL

ARCHITECT

djrd  
architects

T +612 9319 2955  
ABN: 48 942 921 969  
Nominated Architects:  
Andrew Hipwell 6562  
Daniel Beekwilder 6192  
  
63 Myrtle Street  
Chippendale NSW 2008  
Sydney Australia  
djrd.com.au

PROJECT

# SALAMANDER SHORES

147 Soldiers Point Road  
Soldiers Point

PHASE  
PART 3A MODIFICATION

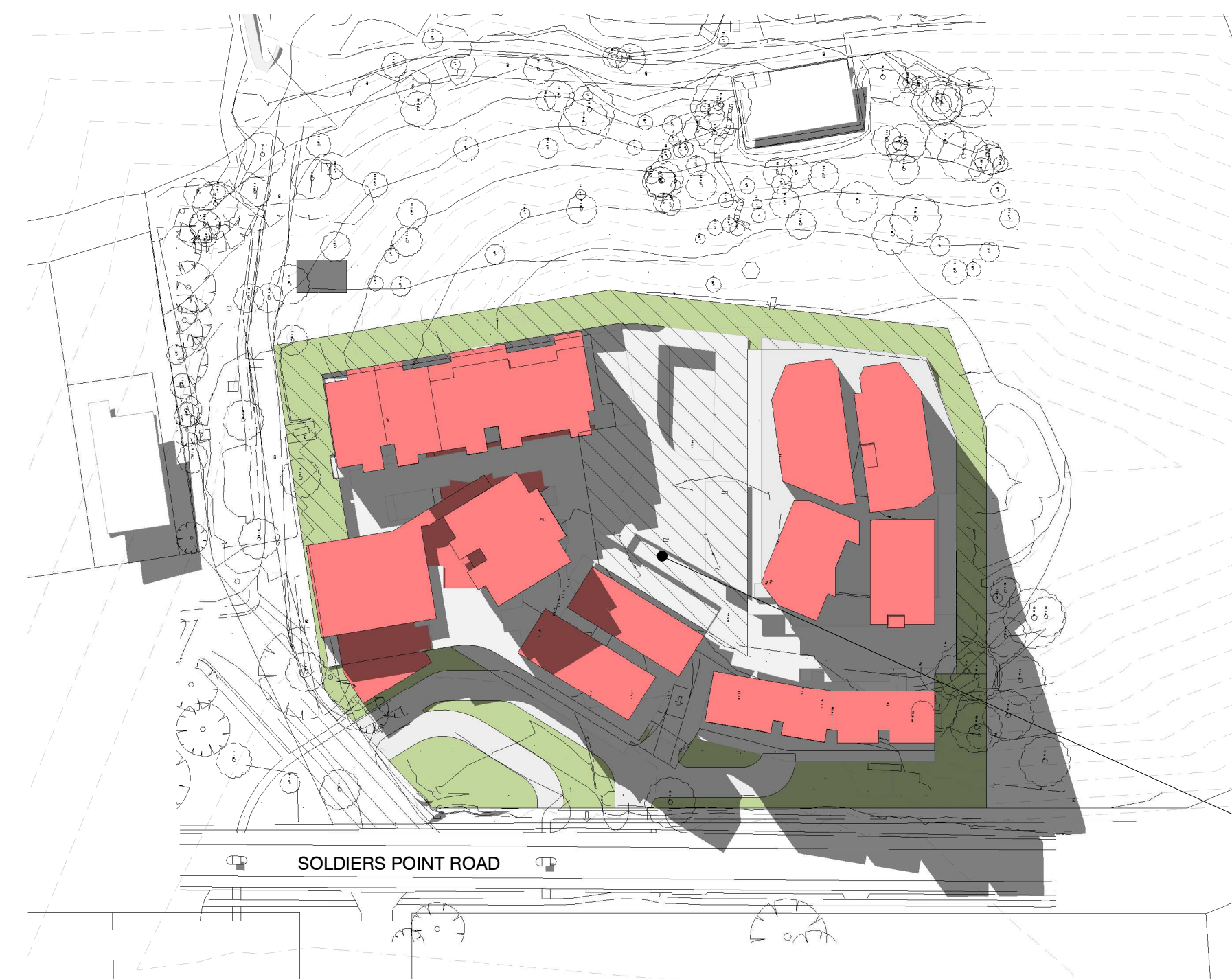
DRAWN	SCALE AT A1	PRINT DATE
Author	As indicated	09/05/22

DESCRIPTION

**SHADOW STUDY - SUMMER**

PROJECT No	DRAWING No	REVISION
20 421	SK-801	A



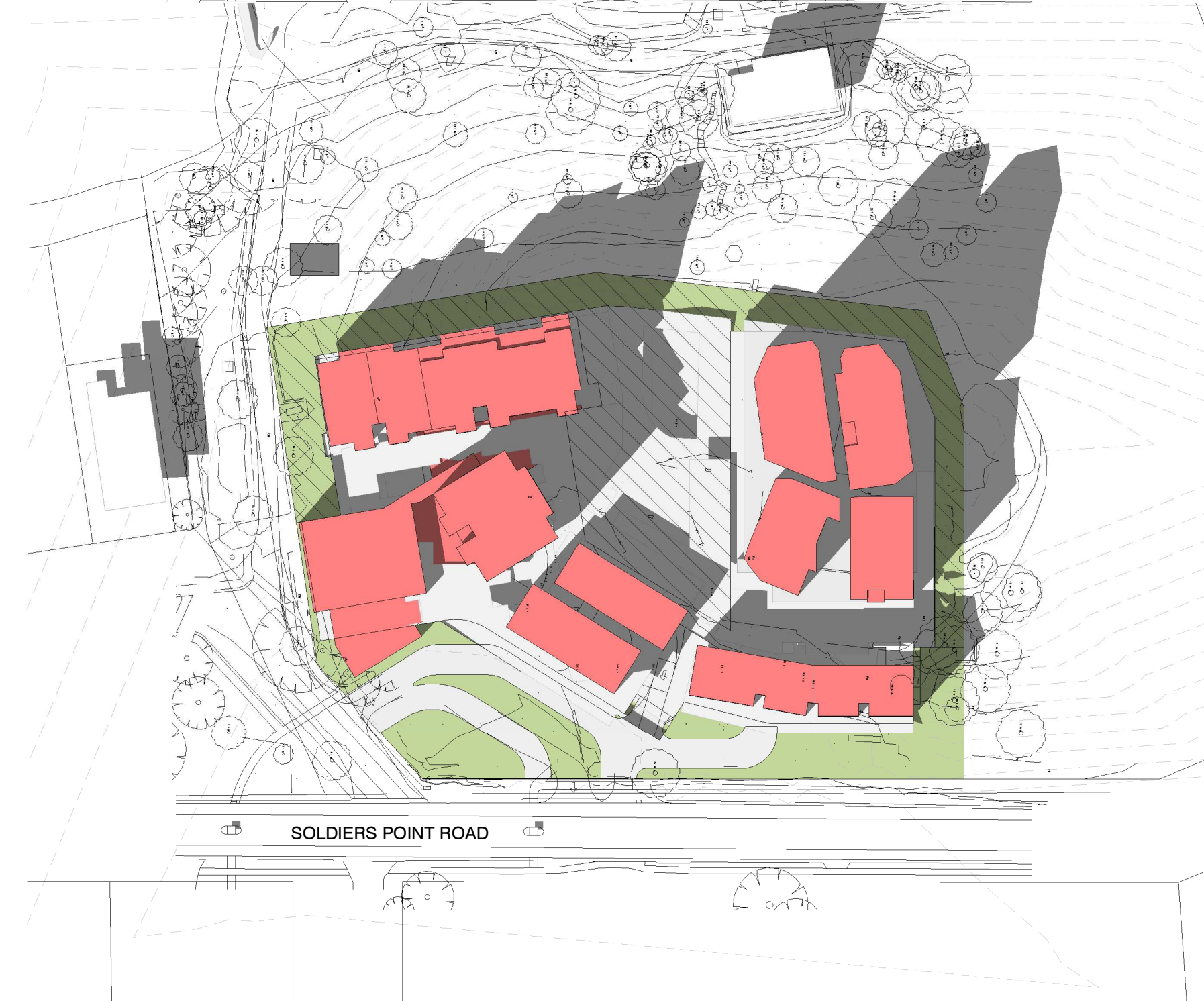


NEGLIGIBLE CHANGE TO THE SHADOW CAST ON  
PRIMARY COMMUNAL OPEN SPACE AT 9AM



- PROFILE OF SHADOW ADJUSTED DUE TO ADJUSTMENT OF BUILDING VOLUMES
- MINOR INCREASE IN SOLAR ACCESS DUE TO THE REDUCTION IN HEIGHT OF BUILDING D AND THE REPOSITIONING OF BUILDING B

3pm

DIRECTOR[illegible]

CLIENT  
SALAMANDER SHORES HOTEL

**djrd**  
architects

+612 9319 2955  
 N: 48 942 921 969  
 minated Architects:  
 drew Hipwell 6562  
 niel Beekwilder 6192  
 Myrtle Street  
 ippendale NSW 2008  
 dney Australia  
 d.com.au

PROJECT  
**SALAMANDER SHORES**

147 Soldiers Point Road  
Soldiers Point

PHASE  
PART 3A MODIFICATION

DRAWN	SCALE AT A1	PRINT DATE
Author	As indicated	09/05/22

DESCRIPTION

SHADOW STUDY -  
EQUINOX

PROJECT No	DRAWING No	REVISION
20 421	SK-802	A



