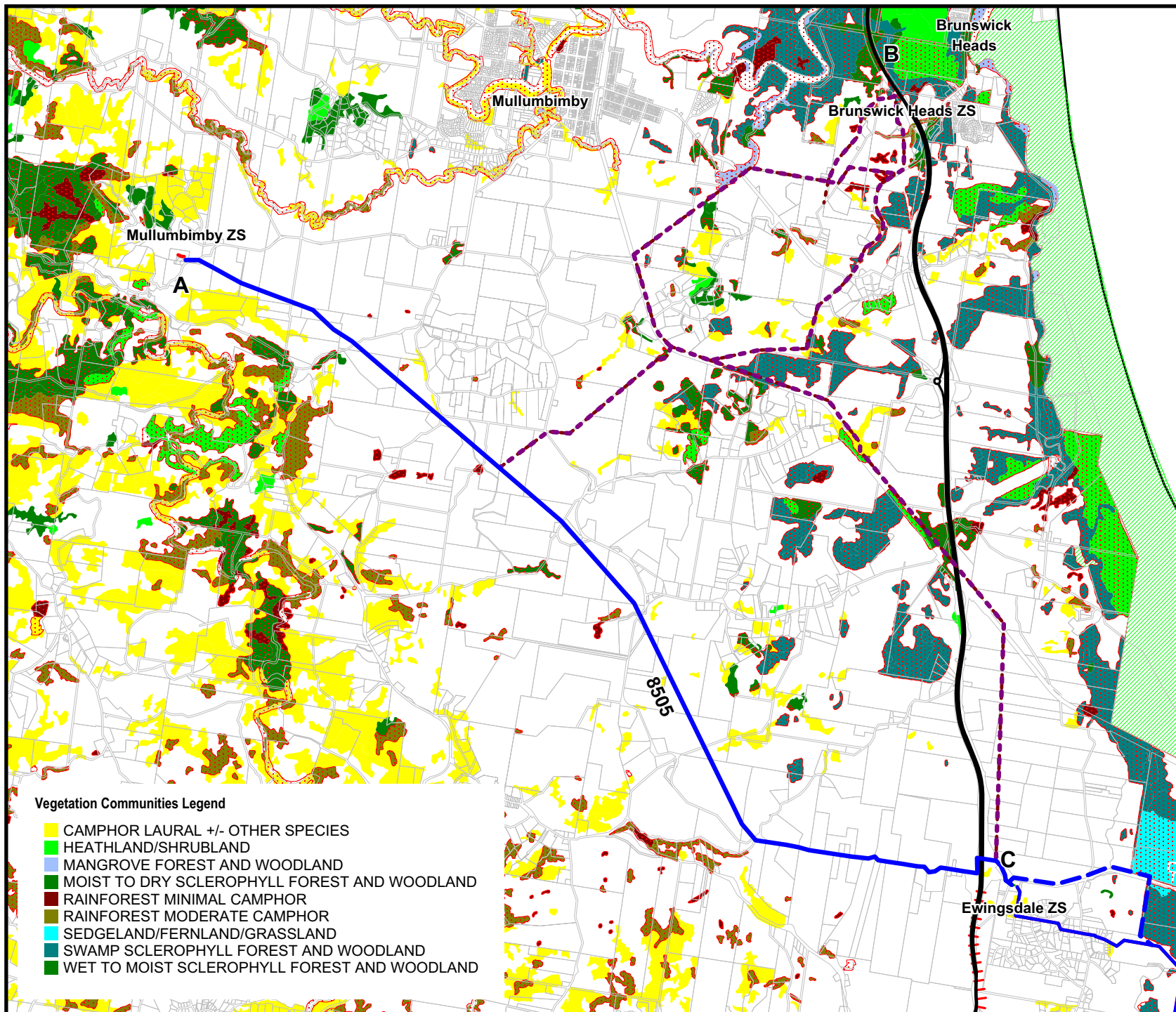


Annex A

Figures



Legend

- New 132kV Line
Preferred Option to be determined
- Upgrade 66kV Line to 132kV
- Proposed 132kV Transmission Line
Assessed by others
- Existing Substation
- Proposed Substation
- Pacific Highway
Current Alignment
- Pacific Highway
Preferred Route
- National Park/Nature Reserve
- Significant Vegetation
(Byron Shire Council)

Figure 1A

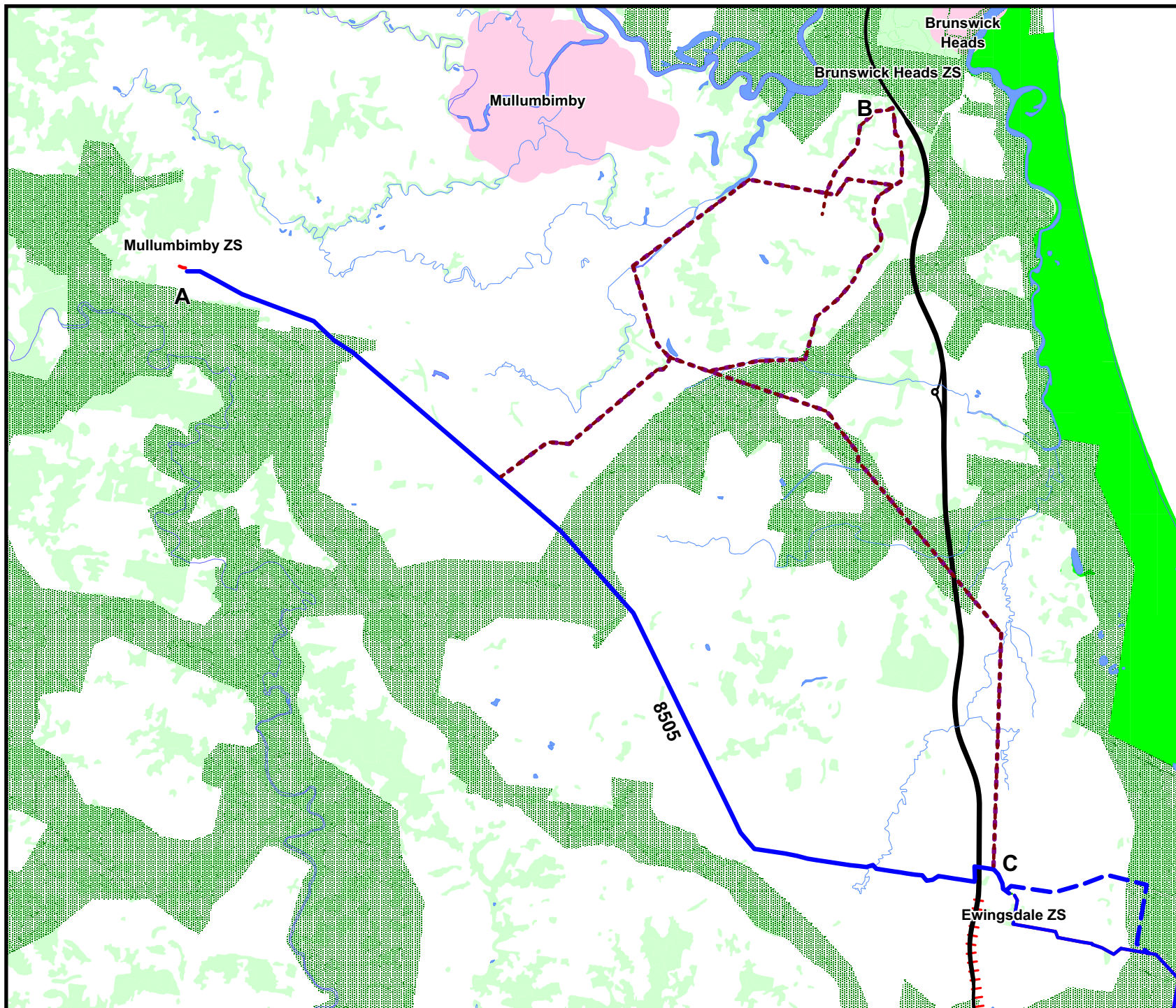
Mullumbimby to Ewingsdale: Vegetation

Client:	Country Energy		
Project:	Lismore to Mullumbimby		
Drawing No:	0051706 1A		
Date:	23/7/07	Drawing Size:	A4
Drawn By:	WW	Reviewed By:	MC
Source:	LPI 2007		
Scale:	see scale bar		



Environmental Resources Management Australia Pty Ltd
PO Box 5711, Port Macquarie, NSW 2444
Telephone +61 2 6584 7155





Legend

- Water Bodies
- Corridors (Byron Shire Council)
- Vegetation
- National Parks/Nature Reserves
- Urban Areas
- Existing Main Roads
- Current Pacific Highway Alignment
- Future Pacific Highway Alignment
- Upgrade Works, 66kV to 132kV
- New 132kV Transmission Line
- New 132kV Transmission Line Assessed by others
- Proposed Substation
- Existing Substation

Figure 1B

Mullumbimby to Ewingsdale: Fauna

Client:	Country Energy		
Project:	Lismore to Mullumbimby		
Drawing No:	0051706 1B		
Date:	23/7/07	Drawing Size:	A4
Drawn By:	WW	Reviewed By:	MC
Source:	LPI 2007		
Scale:	1:40,000		



Environmental Resources Management Australia Pty Ltd
PO Box 5711, Port Macquarie, NSW 2444
Telephone +61 2 6584 7155



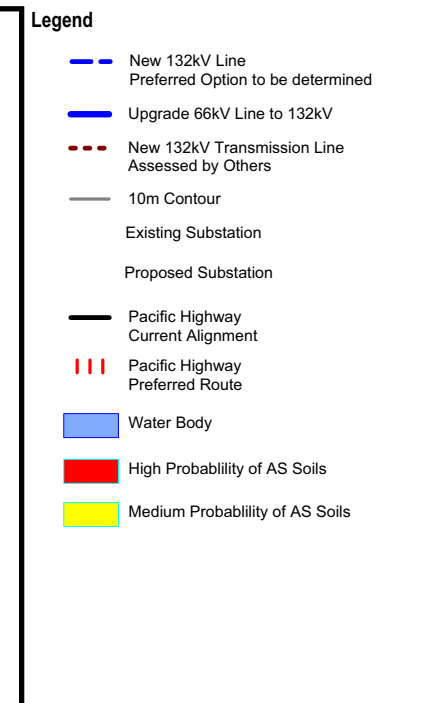
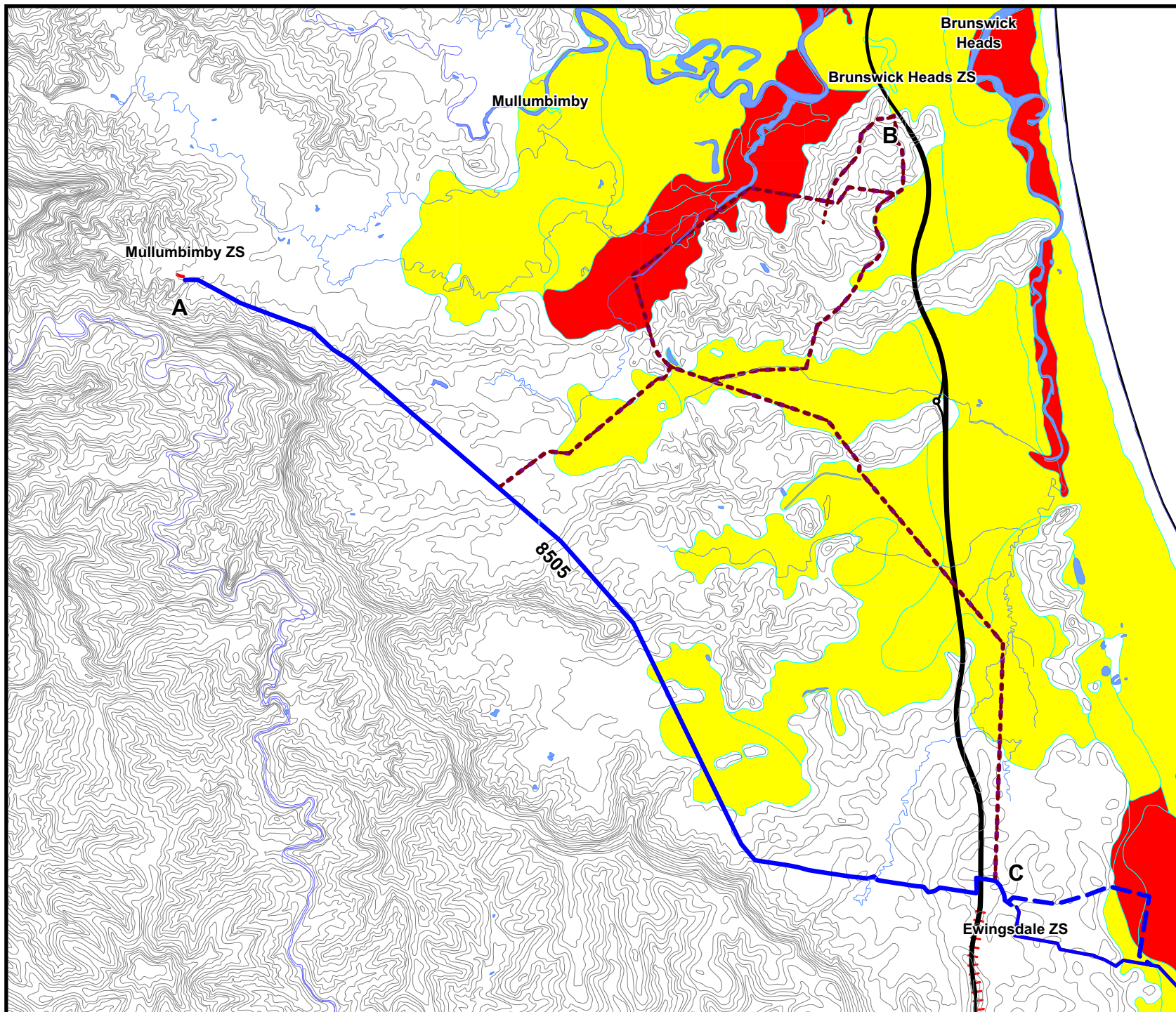


Figure 1C
Mullumbimby to Ewingsdale:
Acid Sulphate Soils

Client:	Country Energy		
Project:	Lismore to Mullumbimby		
Drawing No:	0051706 1C		
Date:	23/7/07	Drawing Size:	A4
Drawn By:	WW	Reviewed By:	MC
Source:	LPI 2007		
Scale:	See scale bar		

