

Legend

- New 132kV Line
Preferred Option to be determined
- Upgrade 66kV Line to 132kV
- Proposed 132kV Transmission Line
Assessed by others
- Existing Substation
- Proposed Substation
- Pacific Highway
Current Alignment
- Pacific Highway
Preferred Route
- National Park/Nature Reserve
- Significant Vegetation
(Byron Shire Council)

Figure 2A

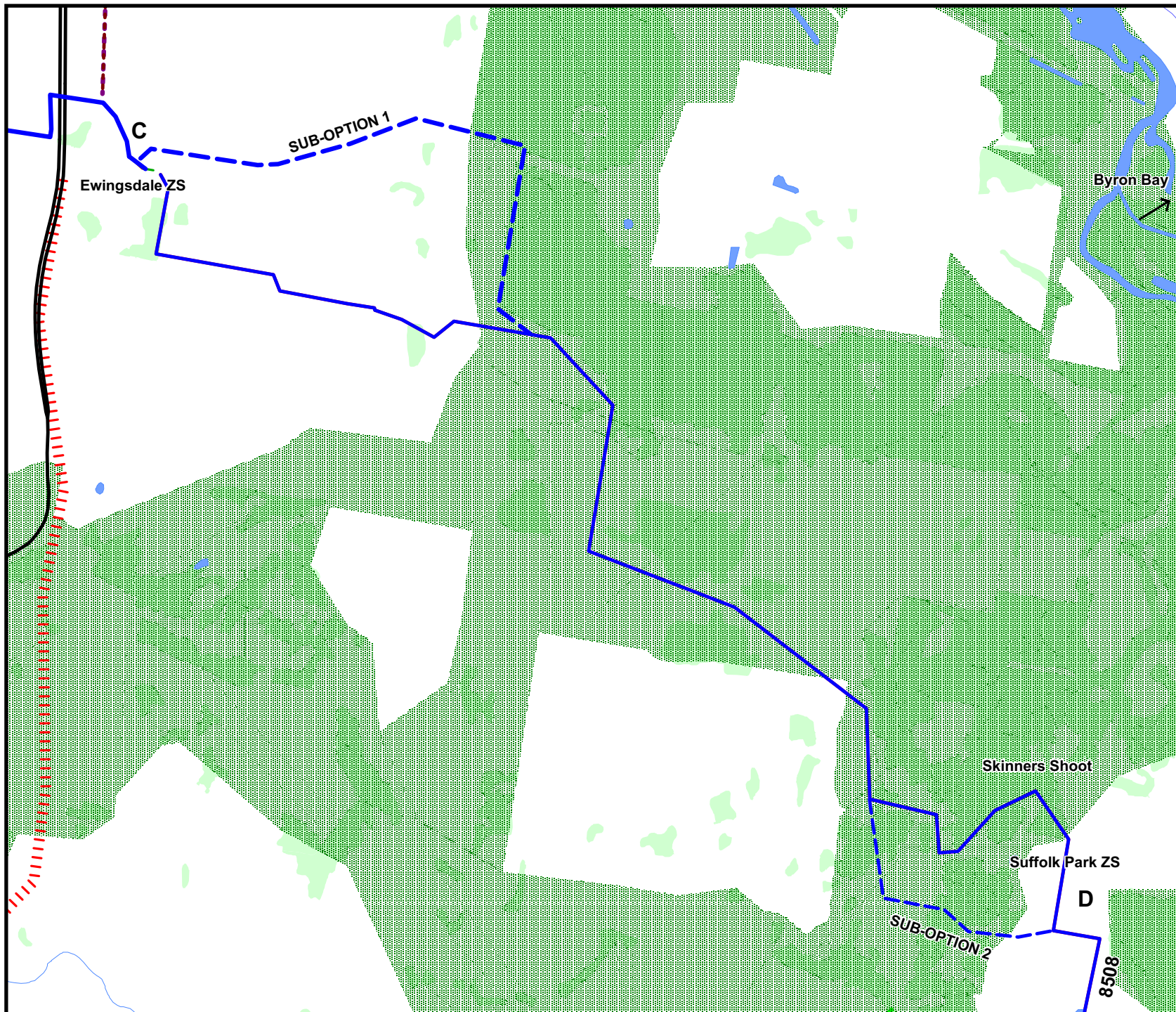
Ewingsdale and Suffolk Park: Vegetation

Client:	Country Energy		
Project:	Lismore to Mullumbimby		
Drawing No:	0051706 2A		
Date:	23/7/07	Drawing Size:	A4
Drawn By:	WW	Reviewed By:	MC
Source:	LPI 2007		
Scale:	see scale bar		



Environmental Resources Management Australia Pty Ltd
PO Box 5711, Port Macquarie, NSW 2444
Telephone +61 2 6584 7155





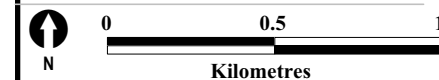
Legend

- Water Bodies
- Corridors (Byron Shire Council)
- Vegetation
- National Parks/Nature Reserves
- Urban Areas
- Existing Main Roads
- Current Pacific Highway Alignment
- Future Pacific Highway Alignment
- Proposed Upgrade Works, 66kV to 132kV
- New 132kV Transmission Line
- New 132kV Transmission Line Assessed by others
- Proposed Substation
- Existing Substation

Figure 2B

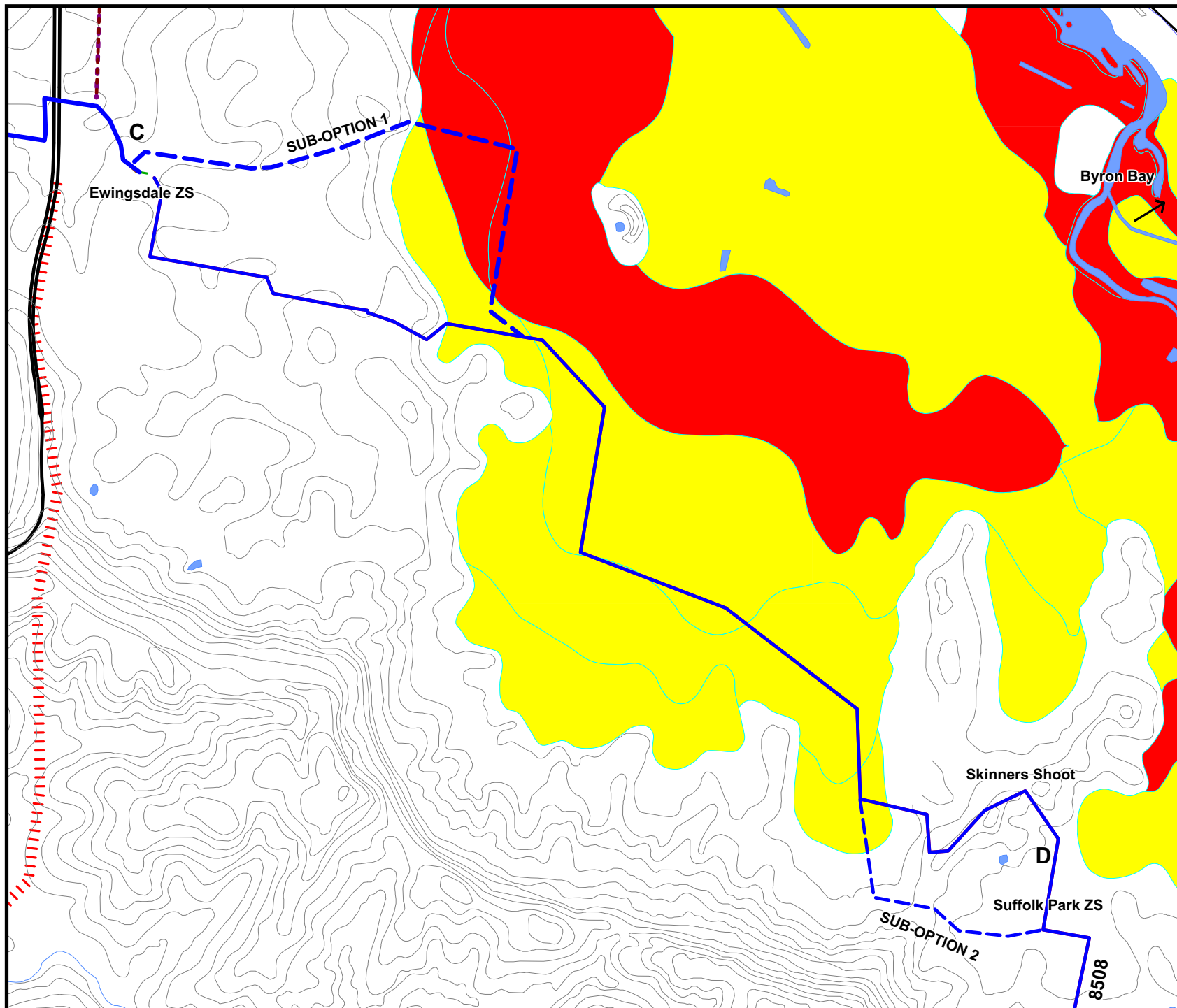
Ewingsdale and Suffolk Park: Fauna

Client:	Country Energy		
Project:	Lismore to Mullumbimby		
Drawing No:	0051706 2B		
Date:	23/7/07	Drawing Size:	A4
Drawn By:	WW	Reviewed By:	MC
Source:	LPI 2007		
Scale:	1:40,000		



Environmental Resources Management Australia Pty Ltd
PO Box 5711, Port Macquarie, NSW 2444
Telephone +61 2 6584 7155





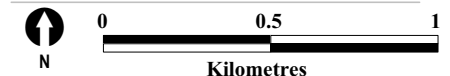
Legend

- New 132kV Line
Preferred Option to be determined
- Upgrade 66kV Line to 132kV
- New 132kV Transmission Line
Assessed by Others
- 10m Contour
- Existing Substation
- Proposed Substation
- Pacific Highway
Current Alignment
- Pacific Highway
Preferred Route
- Water Body
- High Probability of AS Soils
- Medium Probability of AS Soils

Figure 2C

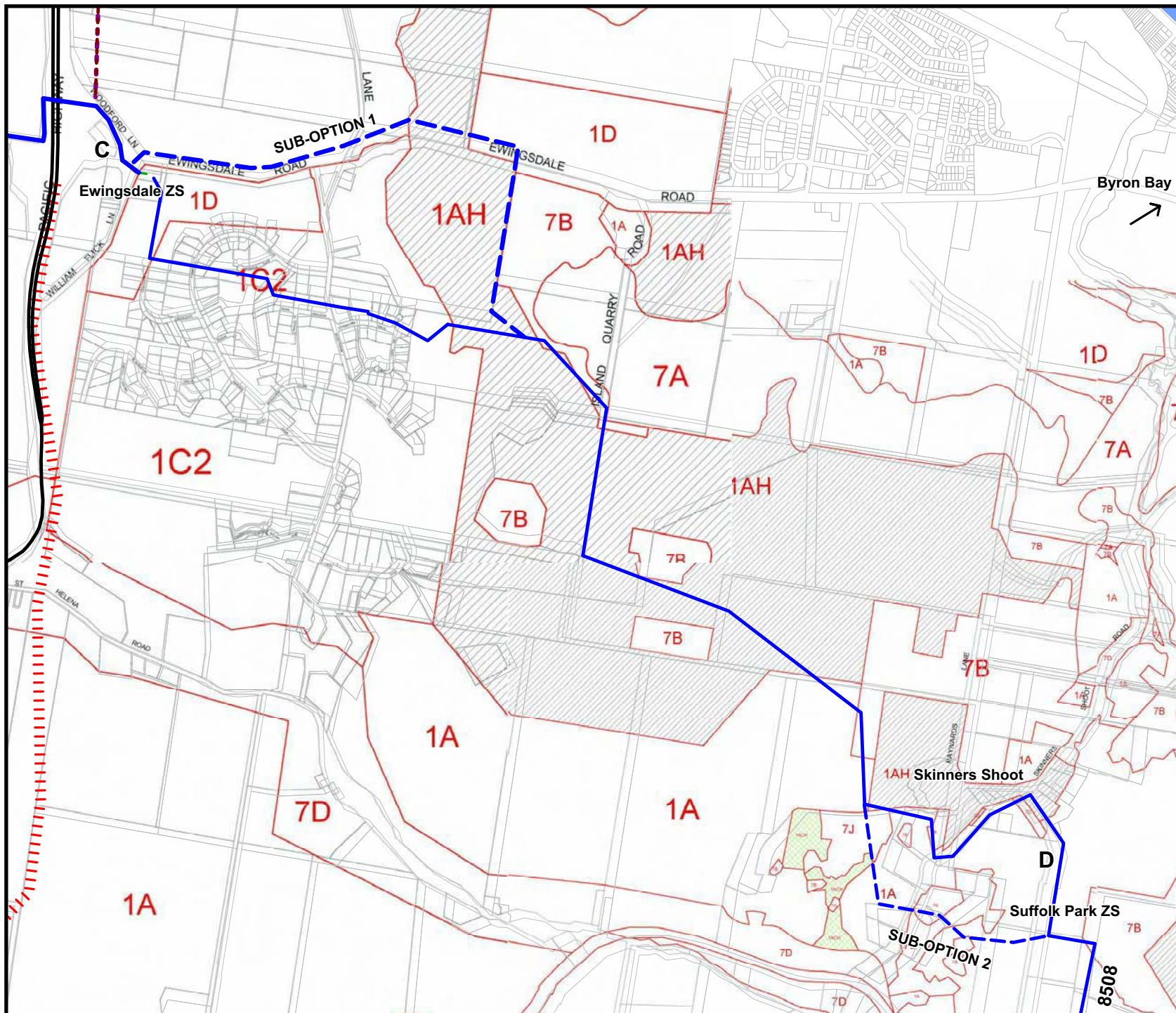
**Ewingsdale and Suffolk Park:
Acid Sulphate Soils**

Client:	Country Energy		
Project:	Lismore to Mullumbimby		
Drawing No:	0051706 2C		
Date:	23/7/07	Drawing Size:	A4
Drawn By:	WW	Reviewed By:	MC
Source:	LPI 2007		
Scale:	See scale bar		



Environmental Resources Management Australia Pty Ltd
PO Box 5711, Port Macquarie, NSW 2444
Telephone +61 2 6584 7155






Legend

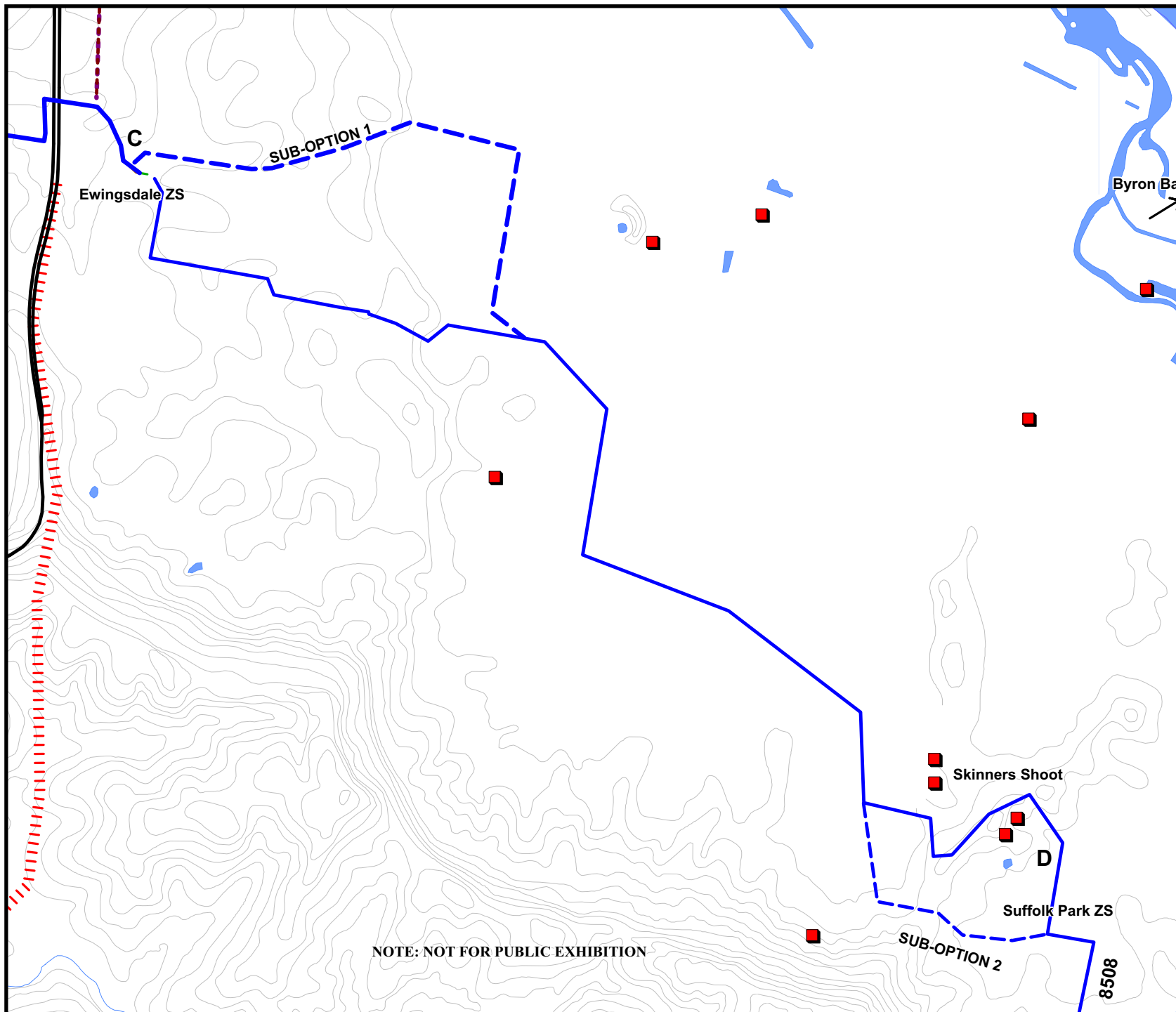
- New 132kV Line
Preferred Option to be determined
- Upgrade 66kV Line to 132kV
- New 132kV Transmission Line
Assessed by others
- Existing Substation
- Proposed Substation
- Pacific Highway
Current Alignment
- Pacific Highway
Preferred Route
- Cadastral Boundaries

Figure 2D

**Ewingsdale and Suffolk Park:
Byron LEP Zoning**

Client:	Country Energy		
Project:	Lismore to Mullumbimby		
Drawing No:	0051706 2D		
Date:	23/7/07	Drawing Size:	A4
Drawn By:	WW	Reviewed By:	MC
Source:	LPI 2007		
Scale:			
<div><div><div>N</div></div><div><div>0</div><div>0.5</div><div></div></div><div>Kilometres</div></div>			
Environmental Resources Management Australia Pty Ltd PO Box 5711, Port Macquarie, NSW 2444 Telephone +61 2 6584 7155			





- Legend**
- New 132kV Line Preferred Option to be determined
 - Upgrade 66kV Line to 132kV
 - Existing Substation
 - Proposed Substation
 - Pacific Highway Current Alignment
 - Pacific Highway Preferred Route
 - AHIMS Records
 - 10m Contours

NOTE: NOT FOR PUBLIC EXHIBITION

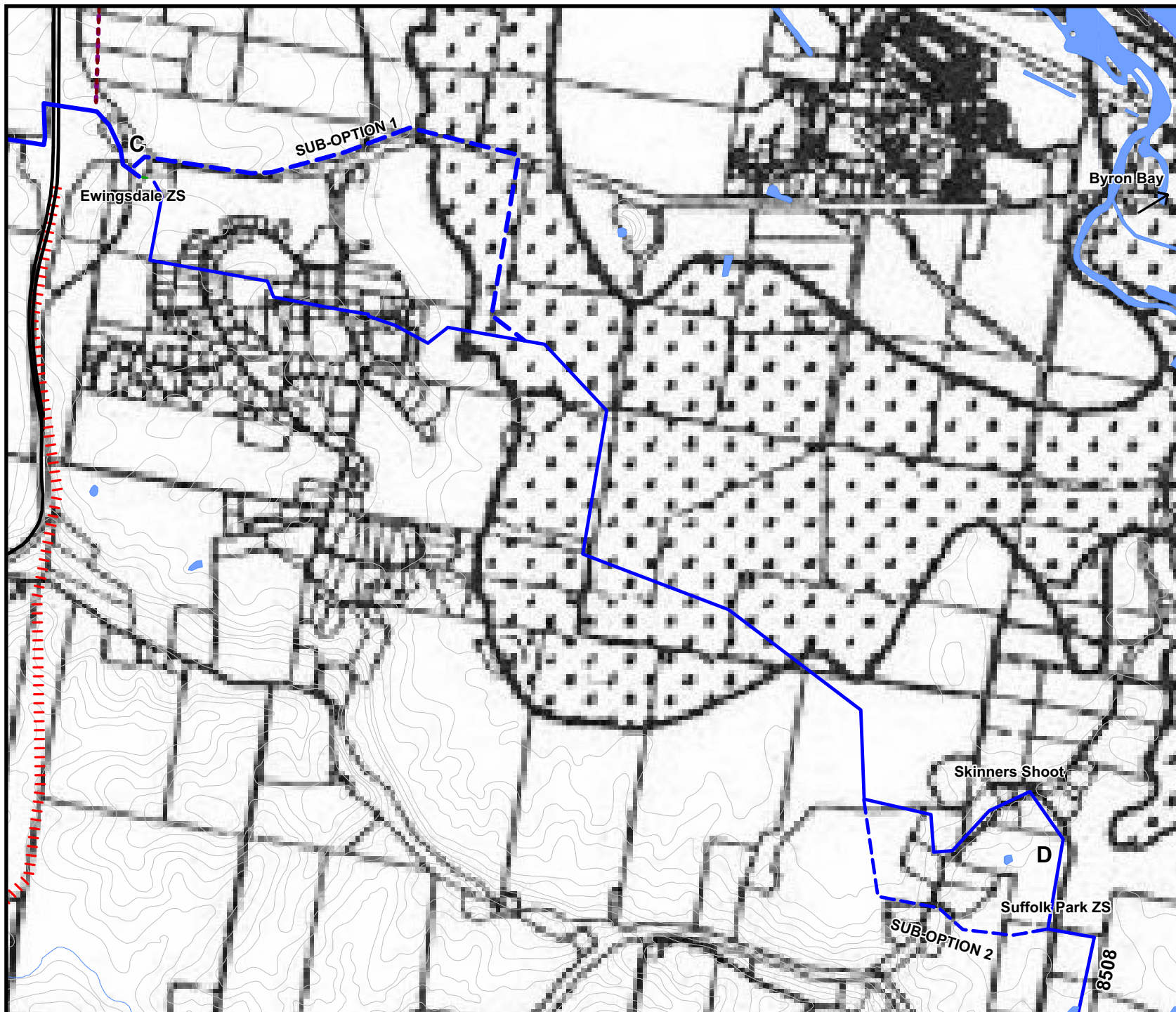
Figure 2E
Ewingsdale and Suffolk Park:
AHIMS Records

Client:	Country Energy
Project:	Lismore to Mullumbimby
Drawing No:	0051706 2E
Date:	23/7/07
Drawn By:	WW
Source:	LPI 2007
Scale:	



Environmental Resources Management Australia Pty Ltd
 PO Box 5711, Port Macquarie, NSW 2444
 Telephone +61 2 6584 7155





- Legend**
- New 132kV Line
Preferred Option to be determined
 - Upgrade 66kV Line to 132kV
 - Existing Substation
 - Proposed Substation
 - Pacific Highway
Current Alignment
 - Pacific Highway
Preferred Route
 - AHIMS Records
 - 10m Contours
 - 1:100yr Flood Level

Figure 2F
Ewingsdale and Suffolk Park:
Flooding

Client:	Country Energy
Project:	Lismore to Mullumbimby
Drawing No:	0051706 2F
Date:	23/7/07
Drawn By:	WW
Source:	LPI 2007

Scale:

0 0.5 1

Kilometres

Environmental Resources Management Australia Pty Ltd
PO Box 5711, Port Macquarie, NSW 2444
Telephone +61 2 6584 7155

