

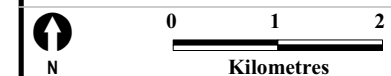
Legend

- New 132kV Line
Preferred Option to be determined
- Upgrade 66kV Line to 132kV
- Existing Substation
- Proposed Substation
- Pacific Highway
Current Alignment
- Pacific Highway
Preferred Route
- National Park/Nature Reserve
- Significant Vegetation
(Byron Shire Council)

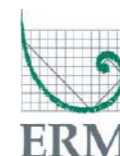
Figure 3A

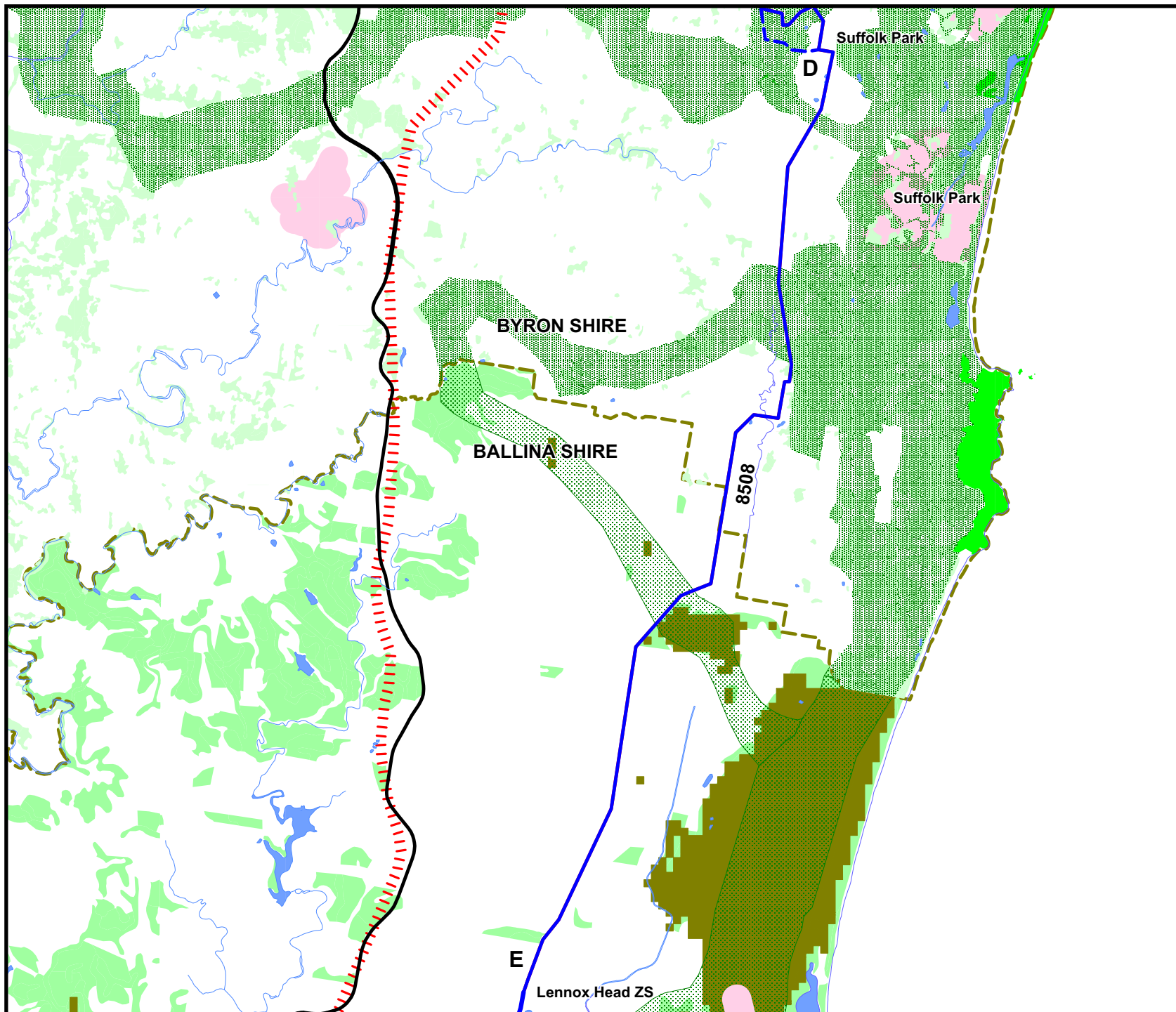
Suffolk Park to Lennox Head: Vegetation

Client:	Country Energy		
Project:	Lismore to Mullumbimby		
Drawing No:	0051706 3A		
Date:	23/7/07	Drawing Size:	A4
Drawn By:	WW	Reviewed By:	MC
Source:	LPI 2007		
Scale:	see scale bar		



Environmental Resources Management Australia Pty Ltd
PO Box 5711, Port Macquarie, NSW 2444
Telephone +61 2 6584 7155





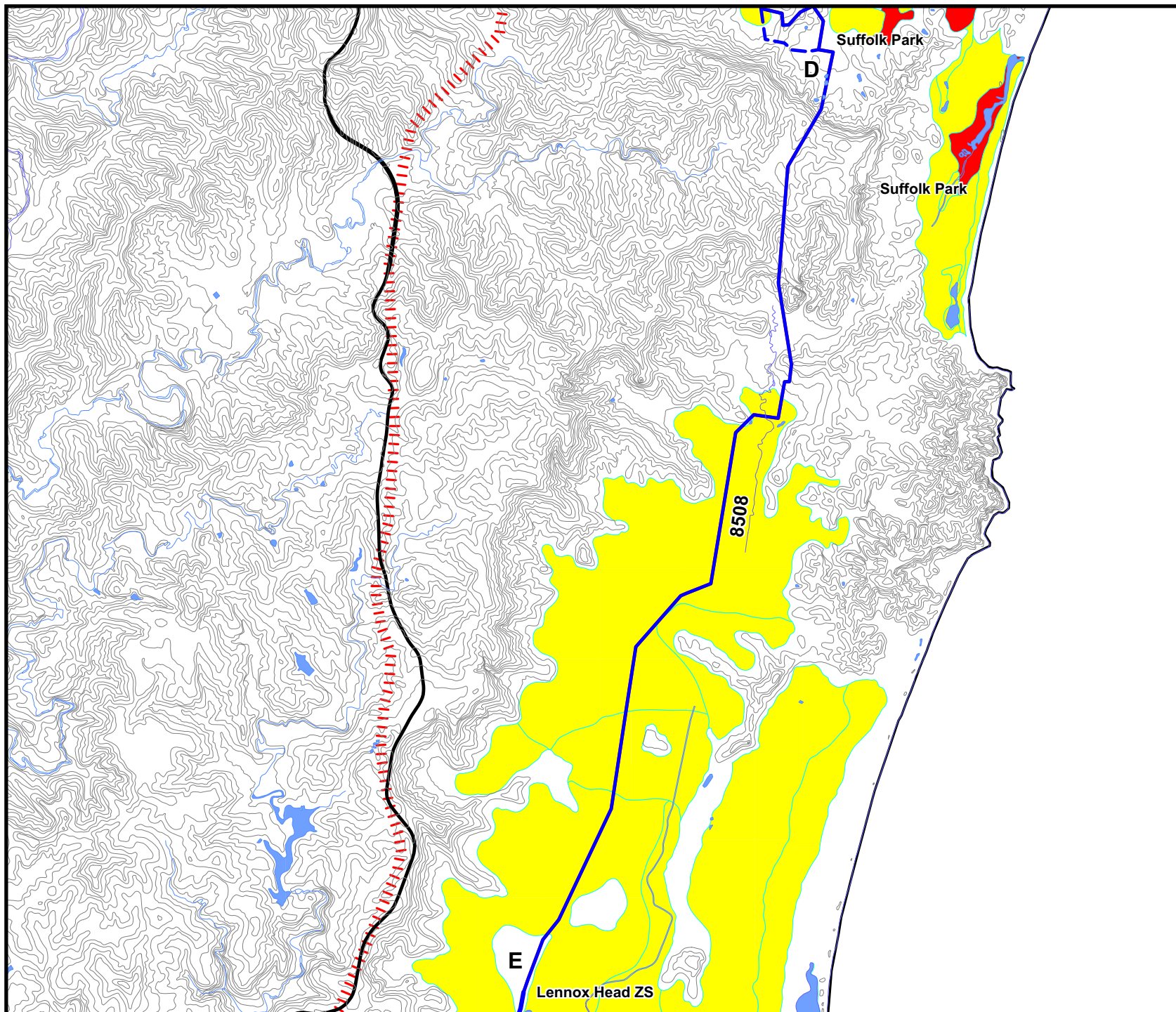
Legend

- Water Bodies
- Corridors (Byron Shire Council)
- Vegetation
- National Parks/Nature Reserves
- Key Habitats (Ballina Shire)
- Corridors (Ballina Shire)
- Urban Areas
- Existing Main Roads
- Current Pacific Highway Alignment
- Future Pacific Highway Alignment
- Upgrade Works, 66kV to 132kV
- New 132kV Transmission Line
- Proposed Substation
- Existing Substation

Figure 3B
Suffolk Park to Lennox Head:
Fauna

Client:	Country Energy		
Project:	Lismore to Mullumbimby		
Drawing No:	0051706 3B		
Date:	23/7/07	Drawing Size:	A4
Drawn By:	WW	Reviewed By:	MC
Source:	LPI 2007		
Scale:	See scale bar		

Environmental Resources Management Australia Pty Ltd
 PO Box 5711, Port Macquarie, NSW 2444
 Telephone +61 2 6584 7155



- Legend**
- New 132kV Line
Preferred Option to be determined
 - Upgrade 66kV Line to 132kV
 - 10m Contour
 - Existing Substation
 - Proposed Substation
 - Pacific Highway
Current Alignment
 - Pacific Highway
Preferred Route
 - Water Body
 - High Probability of AS Soils
 - Medium Probability of AS Soils

Figure 3C
Suffolk Park to Lennox Head:
Acid Sulphate Soils

Client:	Country Energy		
Project:	Lismore to Mullumbimby		
Drawing No:	0051706 3C		
Date:	23/7/07	Drawing Size:	A4
Drawn By:	WW	Reviewed By:	MC
Source:	LPI 2007		
Scale:	See scale bar		



Environmental Resources Management Australia Pty Ltd
PO Box 5711, Port Macquarie, NSW 2444
Telephone +61 2 6584 7155

