

Vegetation Communities Legend


- Dry Sclerophyll
- Exotic Weed Trees
- Heath Shrub
- Littoral Rainfore
- Rainforest
- Riverine/Swamp
- Wet Sclerophyll

Legend

- New 132kV Line
Preferred Option to be determined
- Upgrade 66kV Line to 132kV
- Existing 66kV Line
- Existing Substation
- Proposed Substation
- Pacific Highway
Current Alignment
- Pacific Highway
Preferred Route
- Cadastral Boundaries

Figure 5A

Alstonville to East Lismore: Vegetation

Client:	Country Energy		
Project:	Lismore to Mullumbimby		
Drawing No:	0051706 5A		
Date:	23/7/07	Drawing Size:	A4
Drawn By:	WW	Reviewed By:	MC
Source:	LPI 2007		
Scale:	see scale bar		
<div><div> N</div><div><div><div>0</div><div>1</div><div>2</div></div><div><div></div><div></div><div></div></div></div><div>Kilometres</div></div>			
Environmental Resources Management Australia Pty Ltd			
PO Box 5711, Port Macquarie, NSW 2444			
Telephone +61 2 6584 7155			



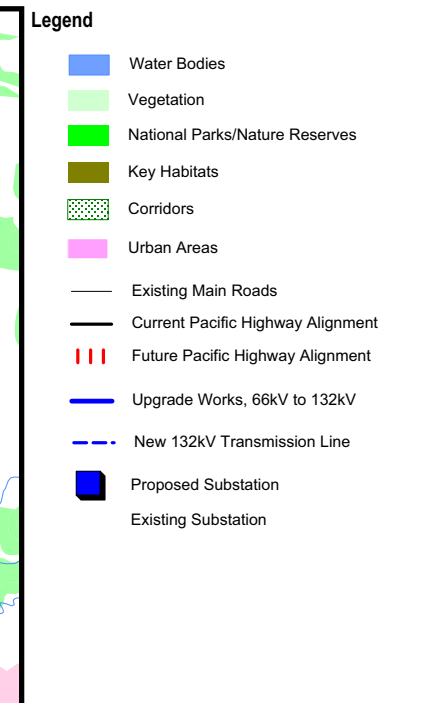
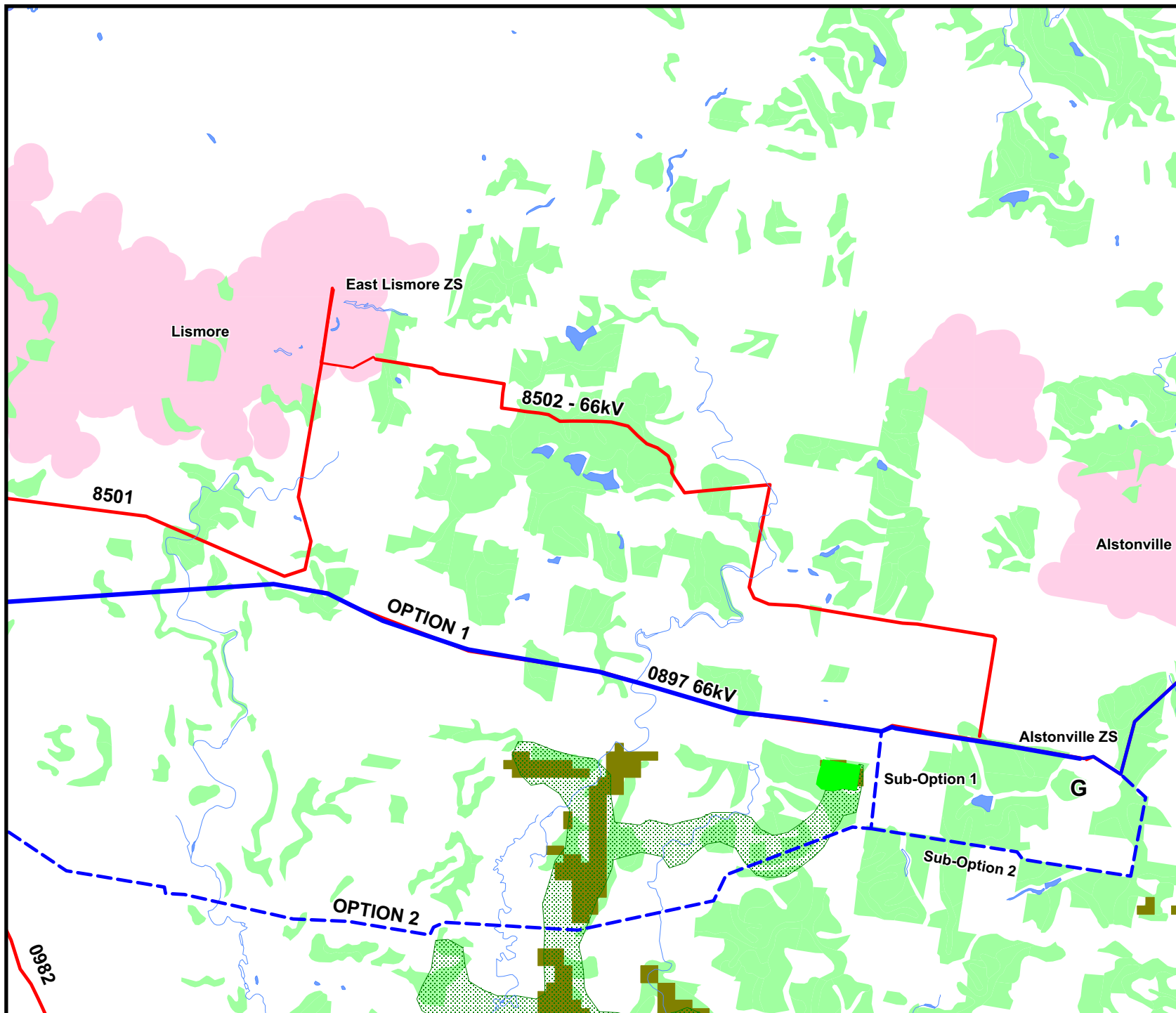


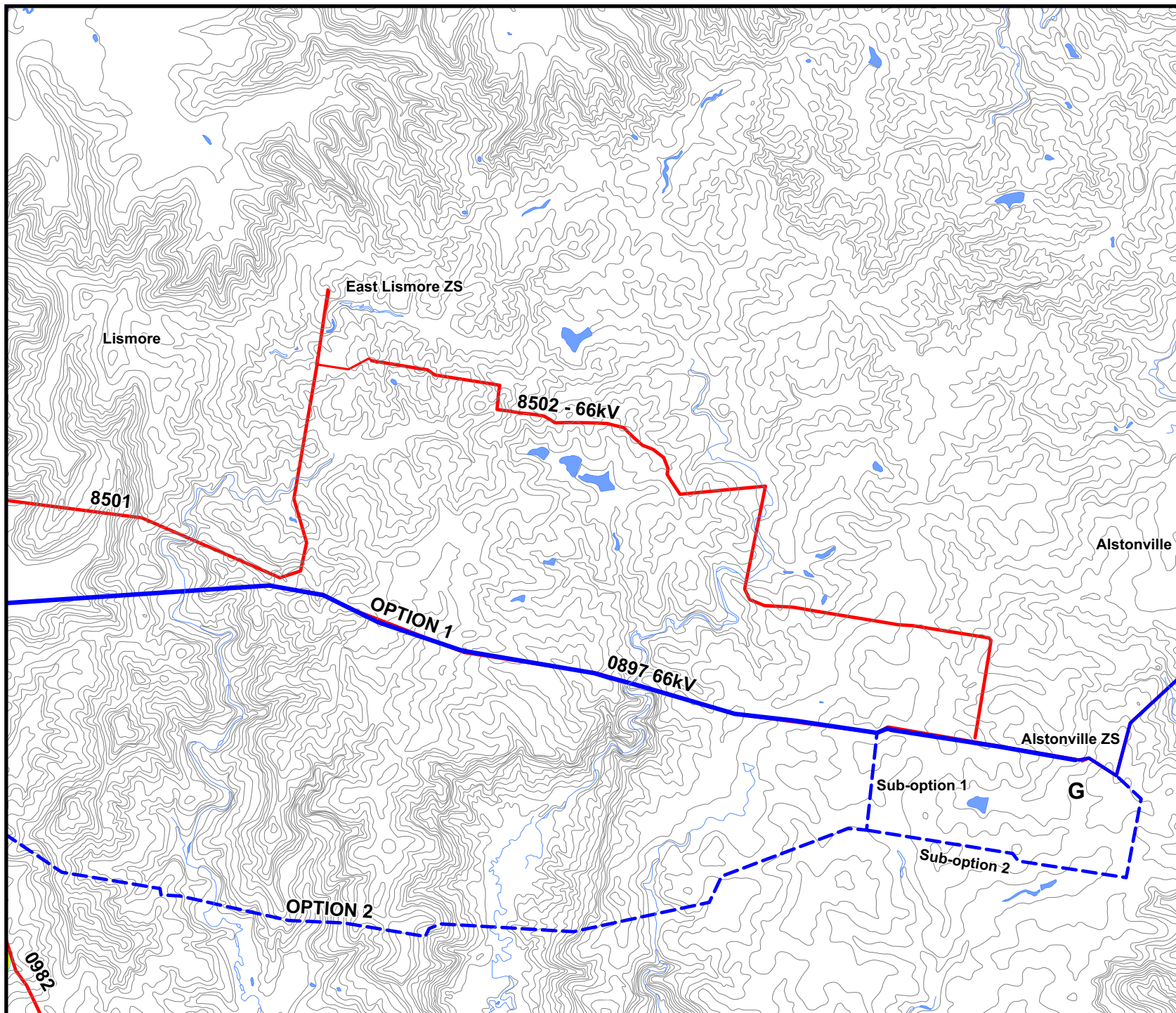
Figure 5B
Alstonville to East Lismore:
Fauna

Client:	Country Energy
Project:	Lismore to Mullum 132kV
Drawing No:	0051706 5B
Date:	24/7/07
Drawn By:	WW
Source:	LPI 2007
Scale:	See scale bar

0 1 2
 Kilometres

Environmental Resources Management Australia Pty Ltd
 PO Box 5711, Port Macquarie, NSW 2444
 Telephone +61 2 6584 7155





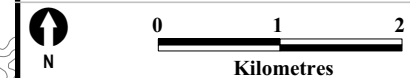
Legend

- New 132kV Line
Preferred Option to be determined
- Upgrade 66kV Line to 132kV
- Existing 66kV Line
- 10m Contour
- Existing Substation
- Proposed Substation
- Pacific Highway
Current Alignment
- Pacific Highway
Preferred Route
- Water Body
- High Probability of AS Soils
- Medium Probability of AS Soils

Figure 5C

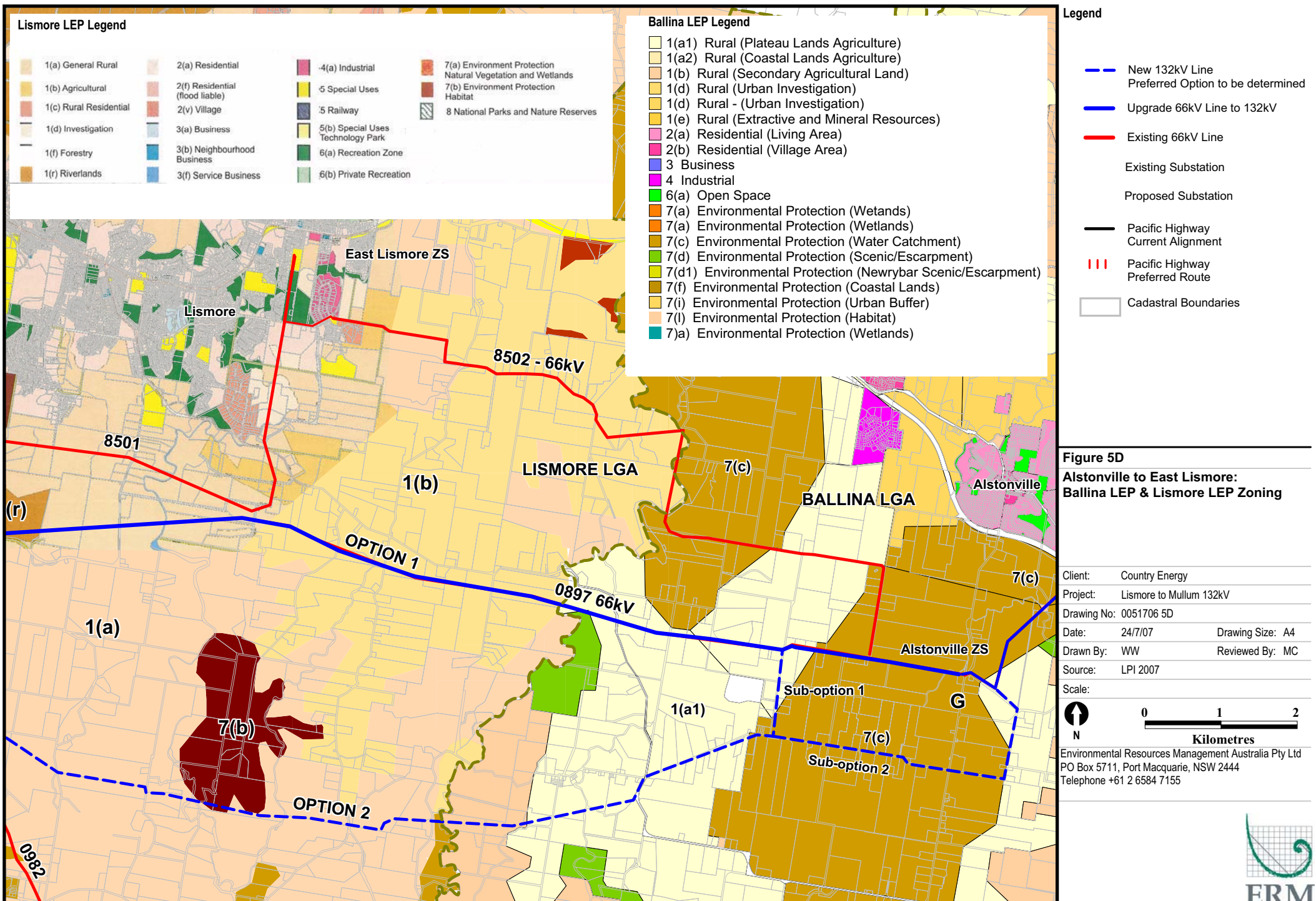
**Alstonville to East Lismore:
Acid Sulphate Soils**

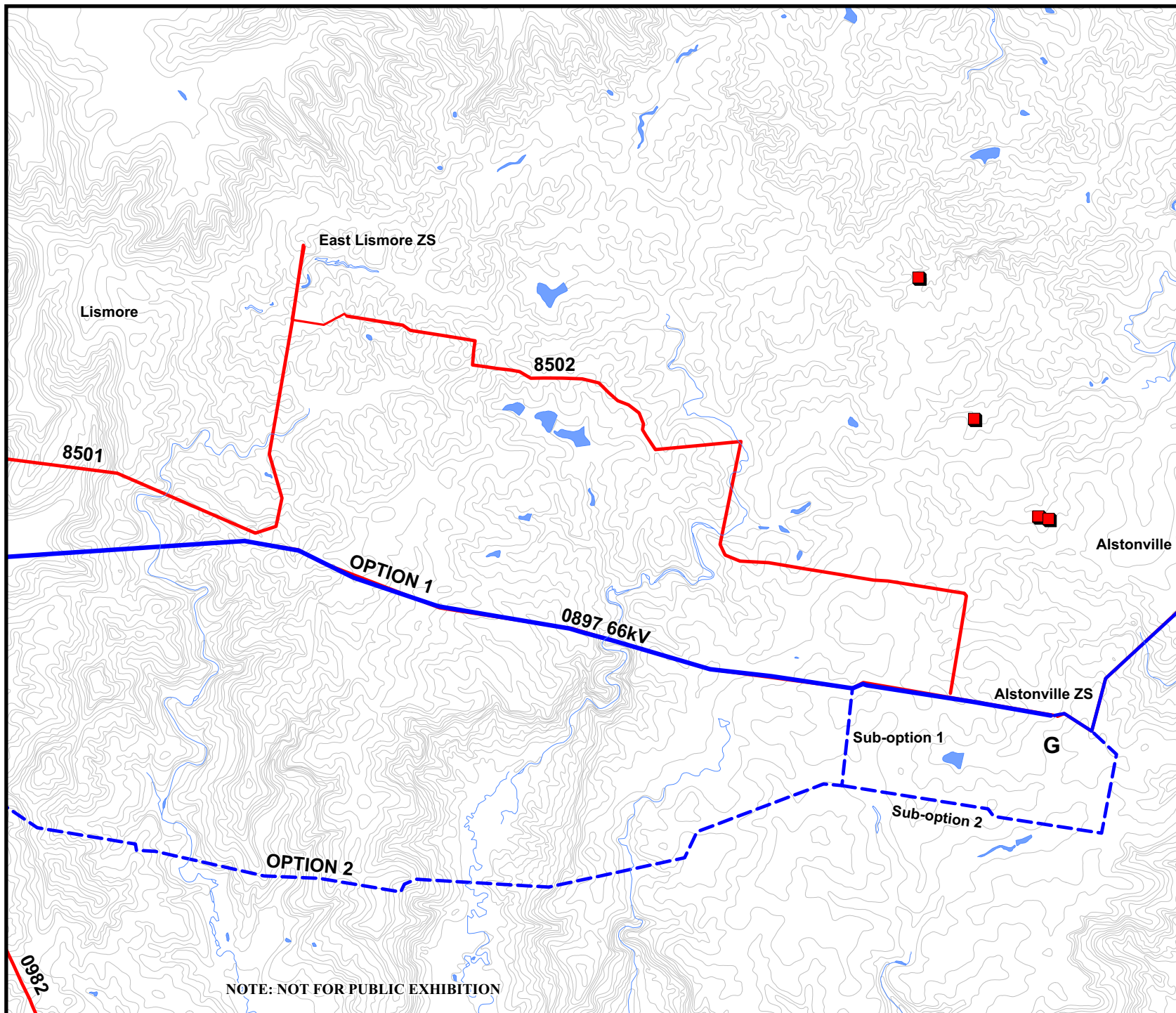
Client:	Country Energy		
Project:	Lismore to Mullum 132kV		
Drawing No:	0051706 5C		
Date:	24/7/07	Drawing Size:	A4
Drawn By:	WW	Reviewed By:	MC
Source:	LPI 2007		
Scale:	See scale bar		



Environmental Resources Management Australia Pty Ltd
PO Box 5711, Port Macquarie, NSW 2444
Telephone +61 2 6584 7155



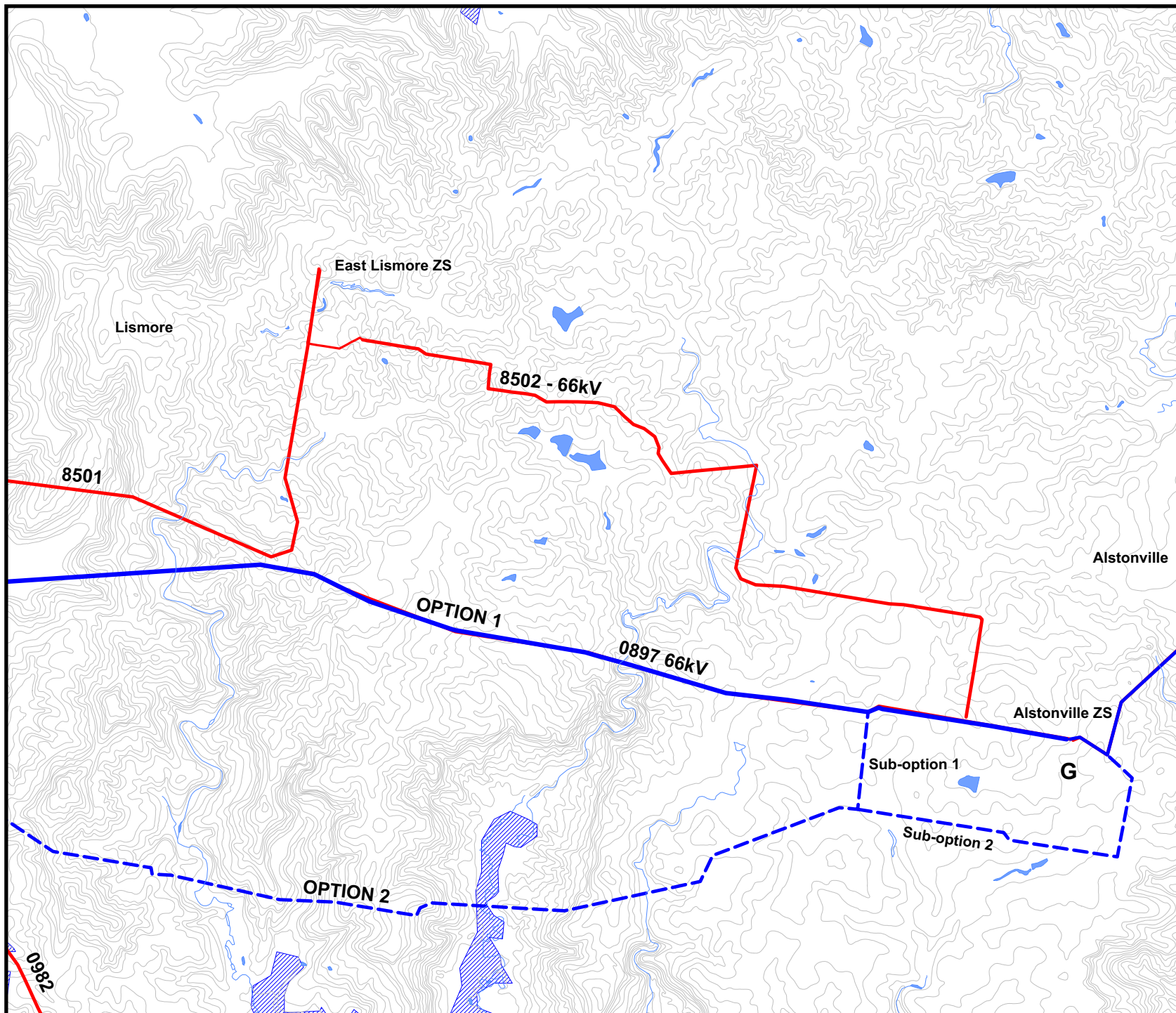




- Legend**
- New 132kV Line
Preferred Option to be determined
 - Upgrade 66kV Line to 132kV
 - Existing 66kV Line
 - Existing Substation
 - Proposed Substation
 - Pacific Highway
Current Alignment
 - ||| Pacific Highway
Preferred Route
 - AHIMS Records
 - 10m Contours


NOTE: NOT FOR PUBLIC EXHIBITION

NOTE: NOT FOR PUBLIC EXHIBITION



- Legend**
- New 132kV Line
Preferred Option to be determined
 - Upgrade 66kV Line to 132kV
 - Existing 66kV Line
 - Existing Substation
 - Proposed Substation
 - Pacific Highway
Current Alignment
 - Pacific Highway
Preferred Route
 - Lismore Shire 1:100 yr flooding
 - 10m Contours

Figure 5F
Alstonville to East Lismore:
Flooding

Client:	Country Energy		
Project:	Lismore to Mullum 132kV		
Drawing No:	0051706 5F		
Date:	24/7/07	Drawing Size:	A4
Drawn By:	WW	Reviewed By:	MC
Source:	LPI 2007		
Scale:			
 N	<div><div>0</div><div>1</div><div>2</div></div> <div><div></div><div></div><div></div></div> <div>Kilometres</div>		
Environmental Resources Management Australia Pty Ltd PO Box 5711, Port Macquarie, NSW 2444 Telephone +61 2 6584 7155			

