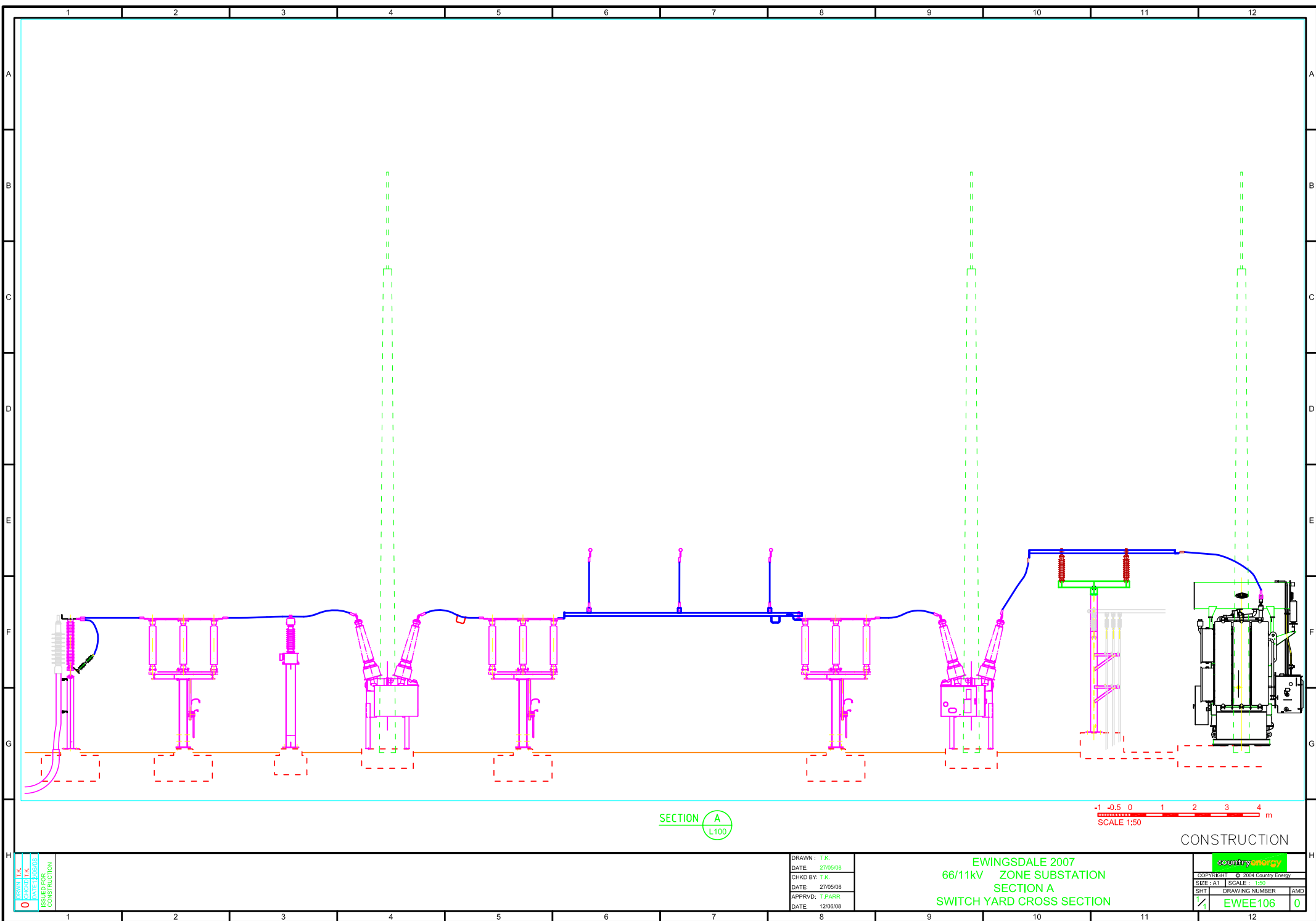


# Ewingsdale Substation







SECTION A  
L100

-1 -0.5 0 1 2 3 4 m  
SCALE 1:50

CONSTRUCTION

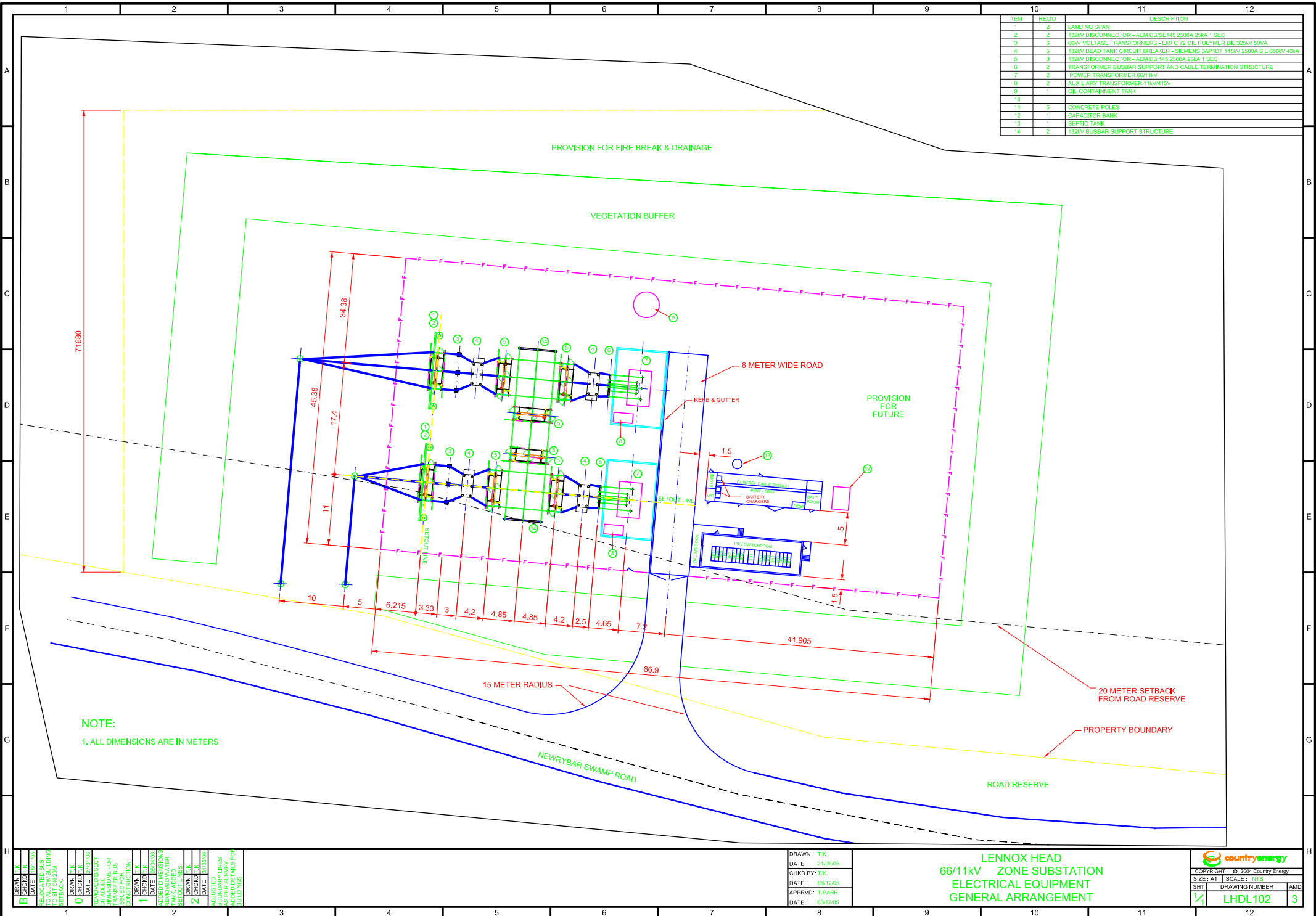
DRAWN: T.K.  
CHECKED: T.K.  
DATE: 27/05/08  
ISSUED FOR CONSTRUCTION

DRAWN: T.K.  
DATE: 27/05/08  
CHKD BY: T.K.  
DATE: 27/05/08  
APPRVD: T.PARR  
DATE: 12/06/08

EWINGSDALE 2007  
66/11kV ZONE SUBSTATION  
SECTION A  
SWITCH YARD CROSS SECTION

COPYRIGHT © 2004 Country Energy	
SIZE: A1	SCALE: 1:50
SHT: 1/1	DRAWING NUMBER: EWEE106
AMD: 0	

## Lennox Head Substation




ITEM	REQD	DESCRIPTION
1	2	LANDING SPAN
2	2	132KV DISCONNECTOR - AEM DB/SE145 2500A 25KA 1 SEC
3	6	66KV VOLTAGE TRANSFORMERS - EMFC 72 OIL POLYMER BIL 325KV 50VA
4	5	132KV DEAD TANK CIRCUIT BREAKER - SIEMENS 3AP1DT 145KV 2500A BIL 650KV 40KA
5	8	132KV DISCONNECTOR - AEM DB 145 2500A 25KA 1 SEC
6	2	TRANSFORMER BUSBAR SUPPORT AND CABLE TERMINATION STRUCTURE
7	2	POWER TRANSFORMER 66/11KV
8	2	AUXILIARY TRANSFORMER 11KV/415V
9	1	OIL CONTAINMENT TANK
10		
11	5	CONCRETE POLES
12	1	CAPACITOR BANK
13	1	SEPTIC TANK
14	2	132KV BUSBAR SUPPORT STRUCTURE

NOTE:  
1. ALL DIMENSIONS ARE IN METERS

DRAWN : T.K.  
DATE: 21/09/05  
CHKD BY: T.K.  
DATE: 08/12/05  
APPRVD: T.PARR  
DATE: 08/12/05

LENNOX HEAD  
66/11KV ZONE SUBSTATION  
ELECTRICAL EQUIPMENT  
GENERAL ARRANGEMENT



© 2004 Country Energy

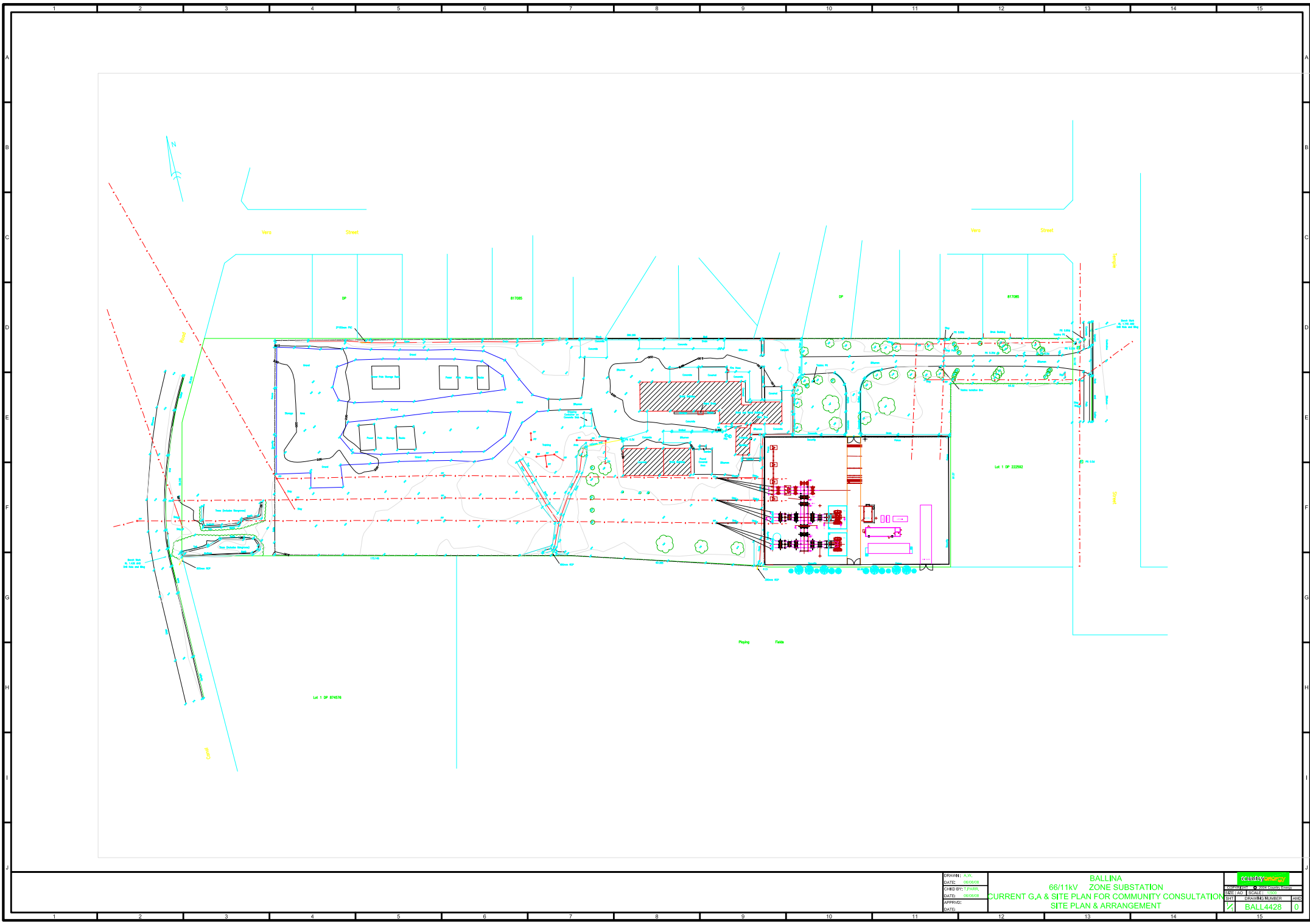
SIZE: A1 | SCALE: NTS

SHT | DRAWING NUMBER | AMD

**LHDL102** | **3**



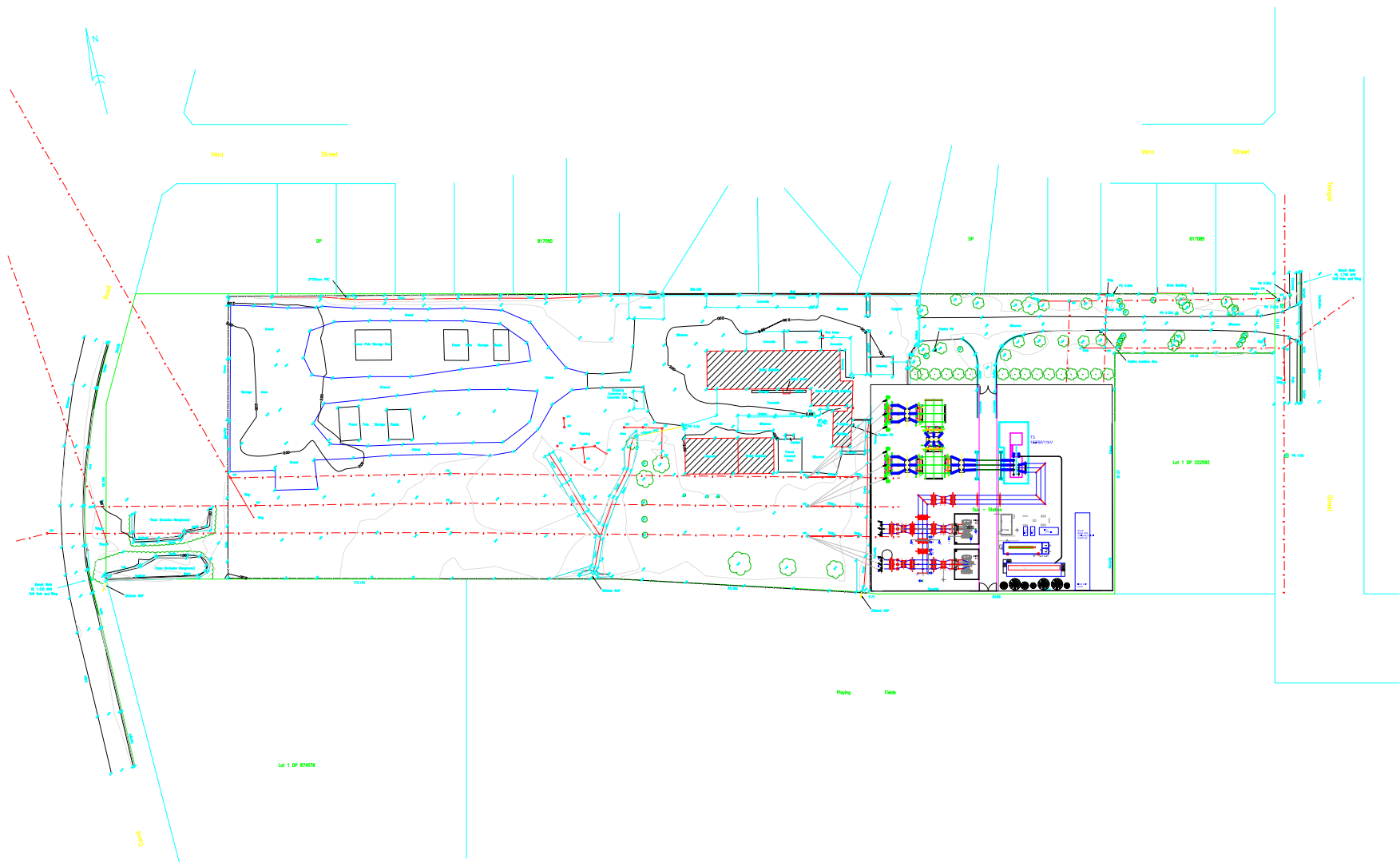
## Ballina Substation

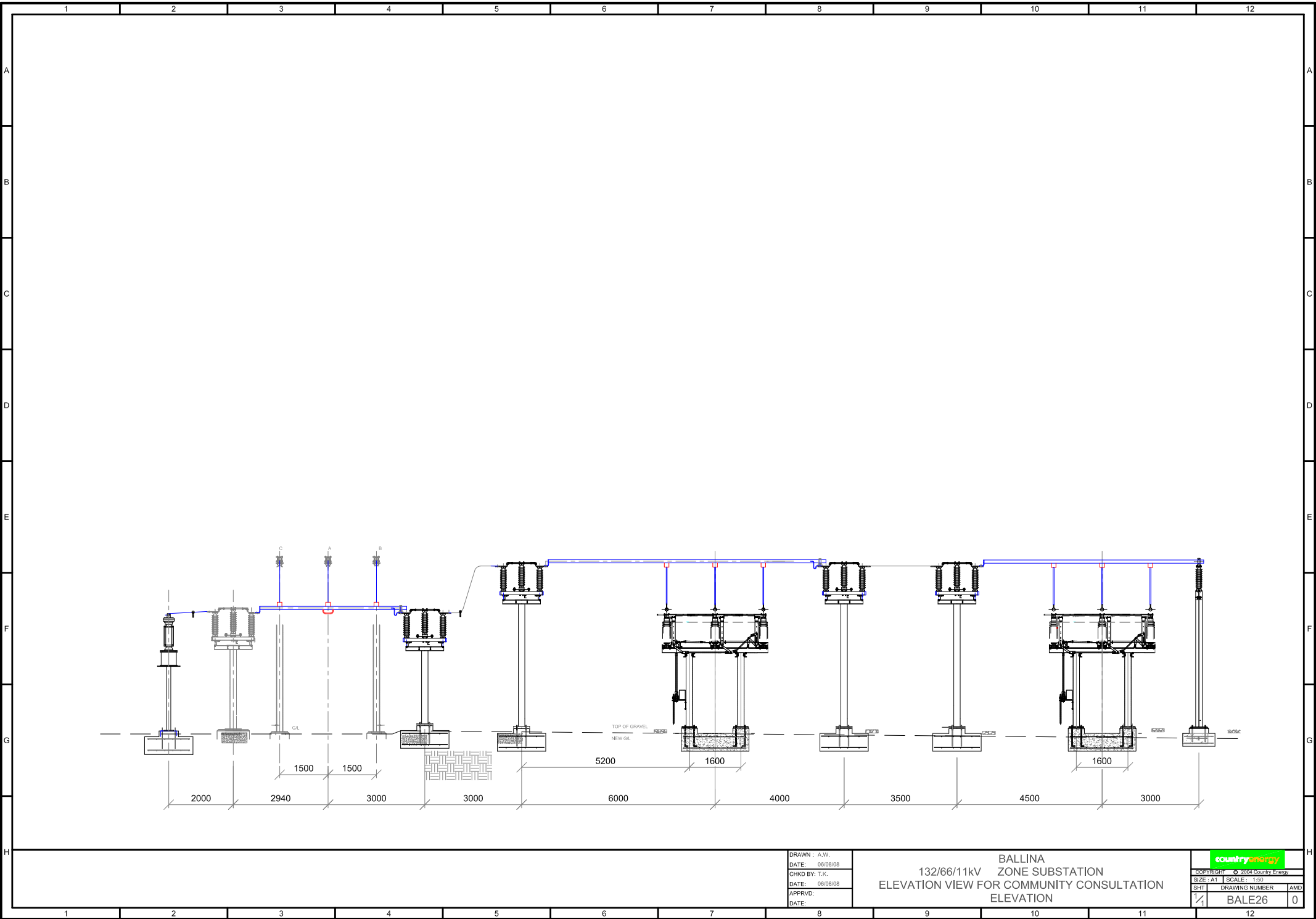


DRAWING: A/CN  
DATE: 06/08/20  
CHD BY: J.P.A.R.  
DATE: 06/08/20  
APPROVED:  
DATE:

BALLINA  
66/11kV ZONE SUBSTATION  
CURRENT G.A. & SITE PLAN FOR COMMUNITY CONSULTATION  
SITE PLAN & ARRANGEMENT

countyenergy  
DRAWING NUMBER: BALL4428  
DATE: 0

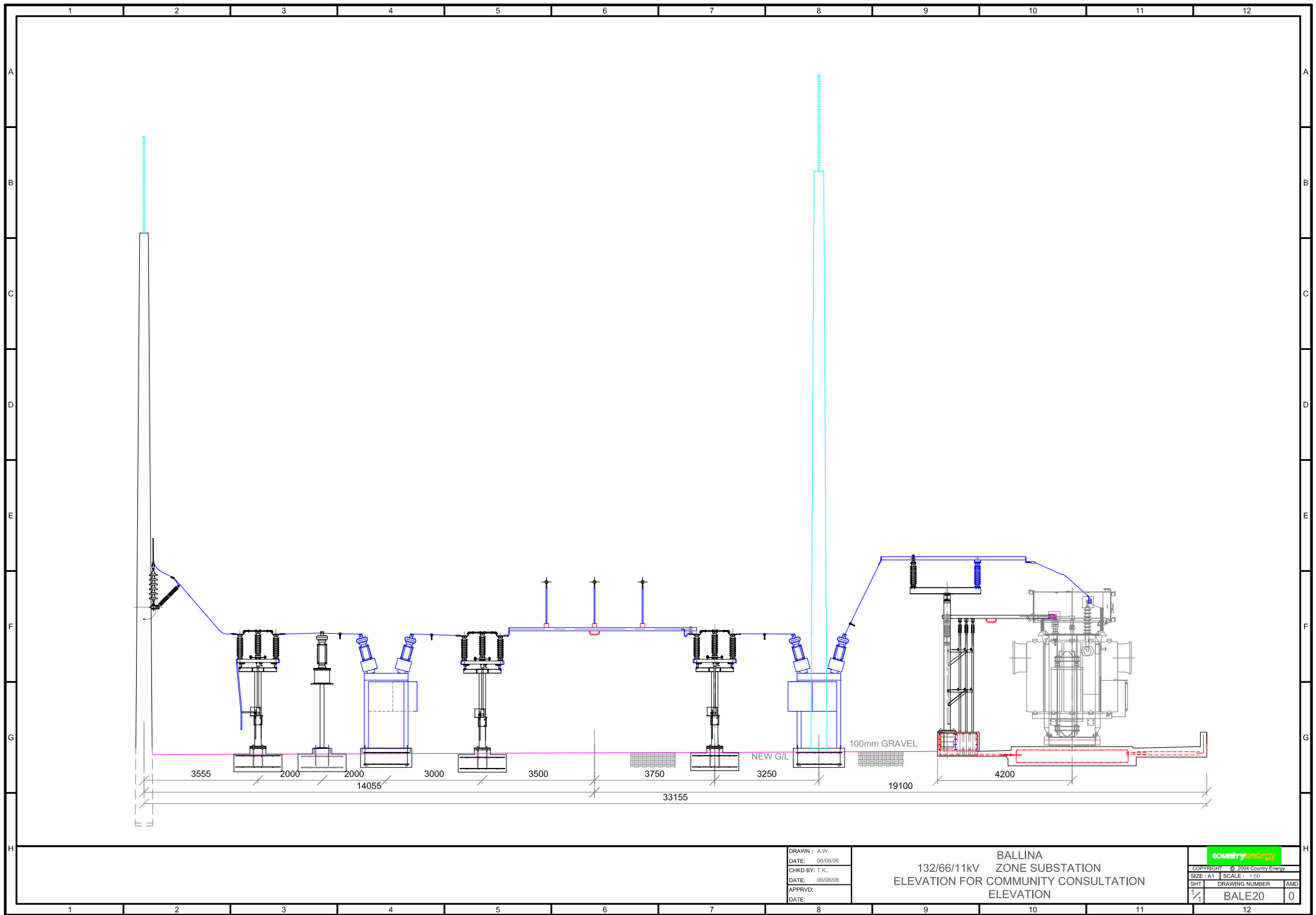


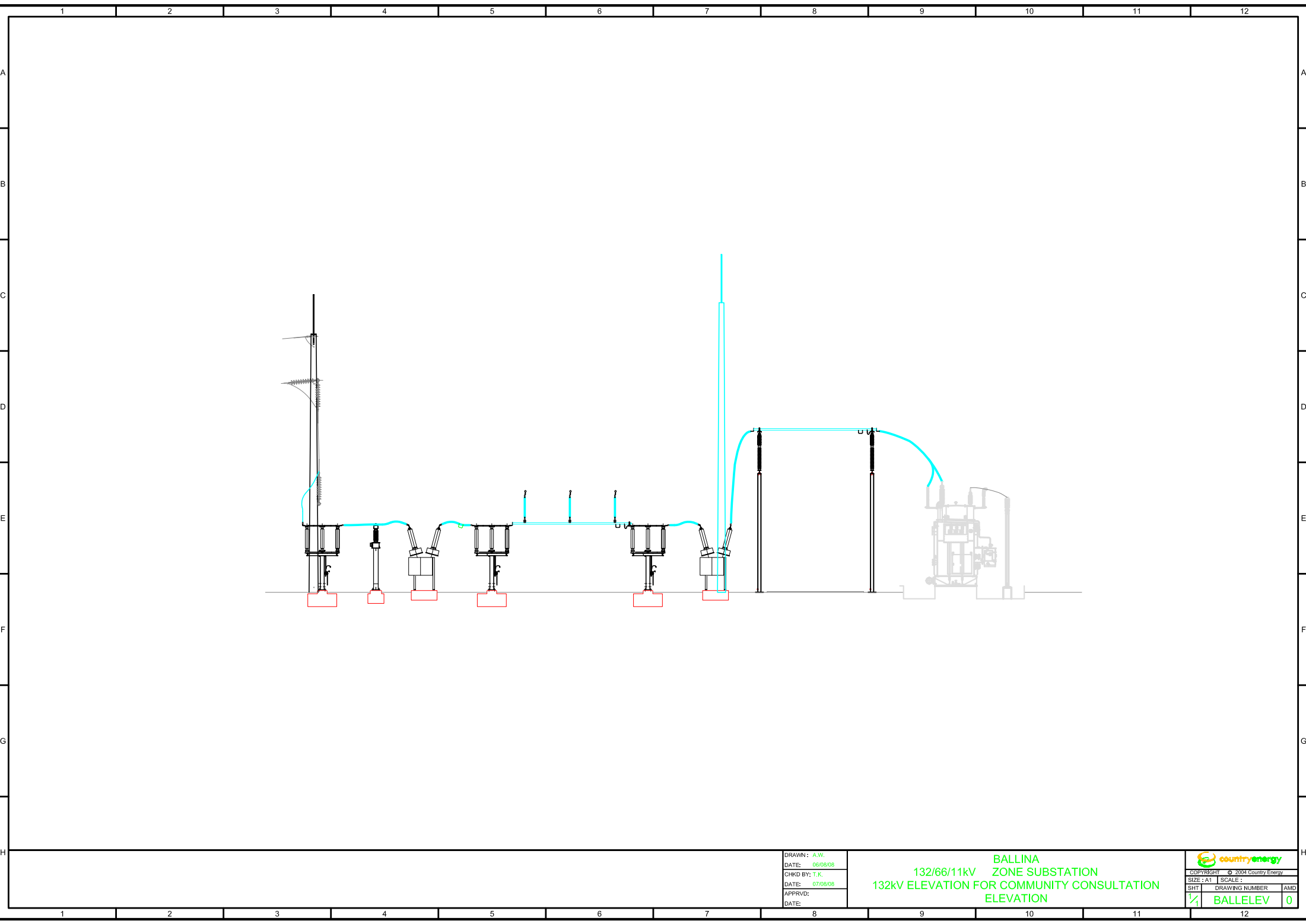


DRAWN : A.W.  
DATE: 06/08/08  
CHKD BY: T.K.  
DATE: 06/08/08  
APPRVD:  
DATE:

BALLINA  
132/66/11kV ZONE SUBSTATION  
ELEVATION VIEW FOR COMMUNITY CONSULTATION  
ELEVATION


country energy	
COPYRIGHT © 2004 Country Energy	
SIZE: A1	SCALE: 1:50
SHT	DRAWING NUMBER
1	BALE26
AMD	0



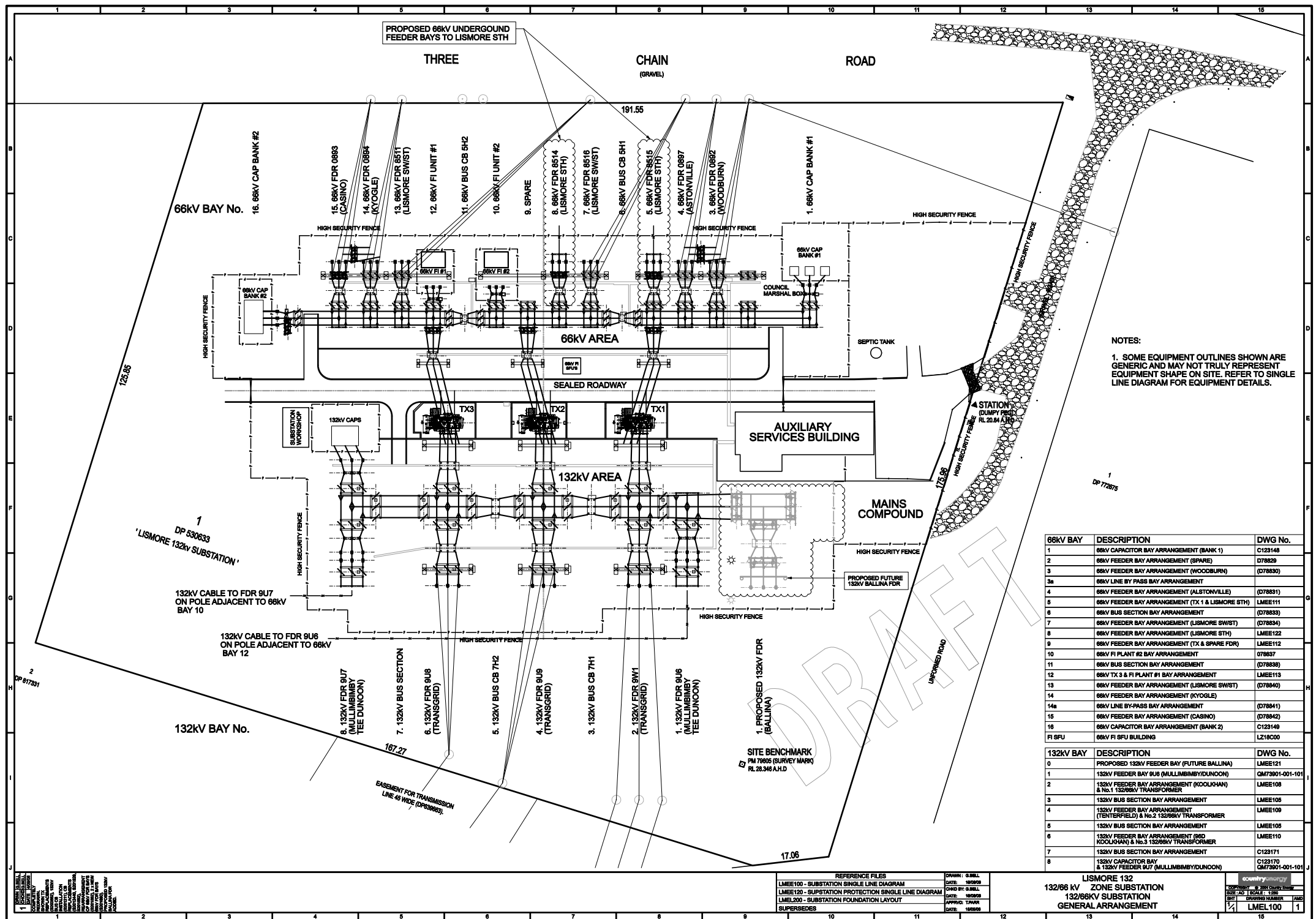


DRAWN: A.W.  
DATE: 06/06/08  
CHKD BY: T.K.  
DATE: 07/06/08  
APPRVD:  
DATE:

BALLINA  
132/66/11kV ZONE SUBSTATION  
132kV ELEVATION FOR COMMUNITY CONSULTATION  
ELEVATION

  
COPYRIGHT © 2004 Country Energy  
SIZE: A1 SCALE:  
SHT DRAWING NUMBER AMD  
1/1 BALLELEV 0

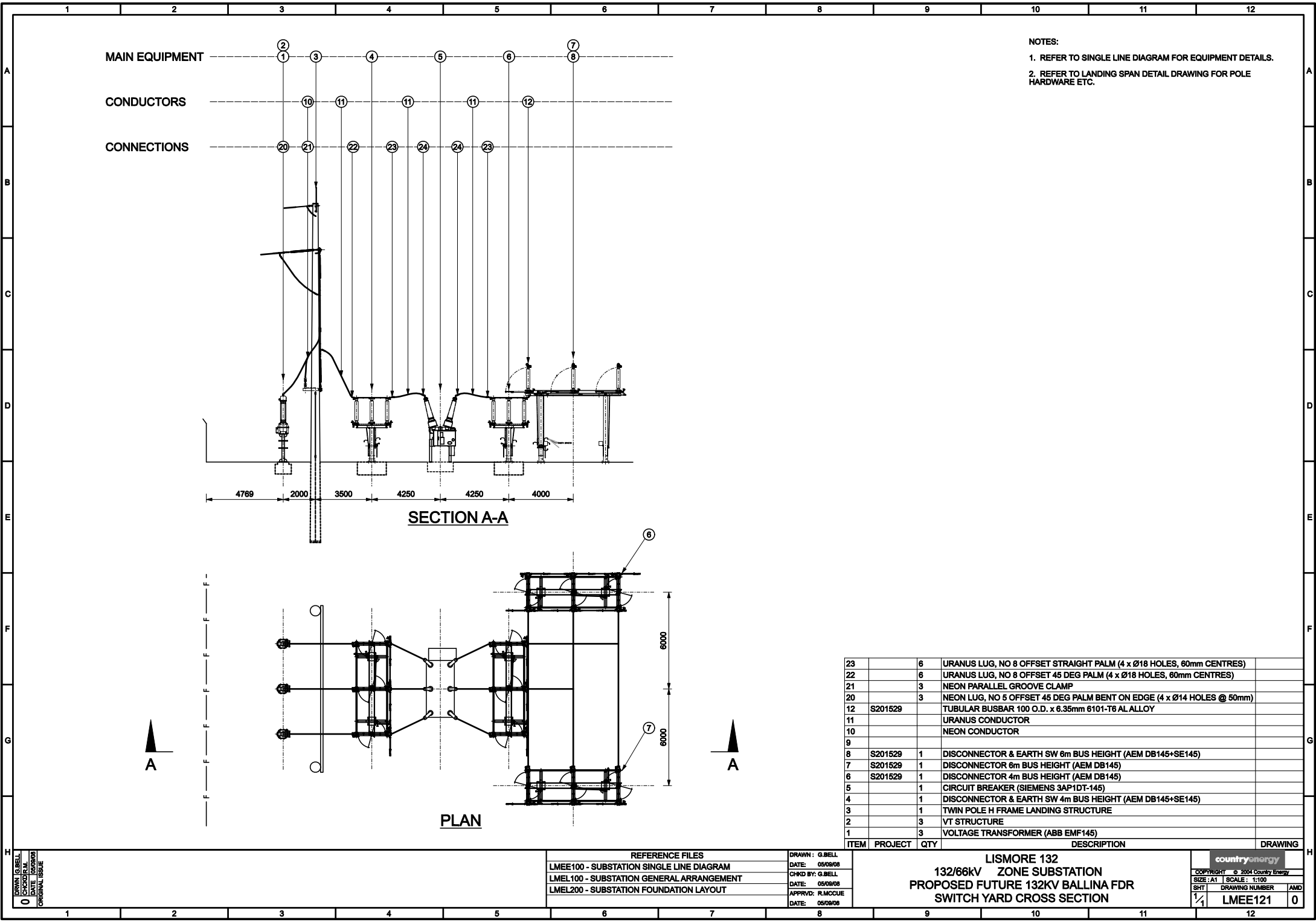
# Lismore Bulk Supply Point Substation



66KV BAY	DESCRIPTION	DWG No.
1	66KV CAPACITOR BAY ARRANGEMENT (BANK 1)	C123148
2	66KV FEEDER BAY ARRANGEMENT (SPARE)	D78829
3	66KV FEEDER BAY ARRANGEMENT (WOODBURN)	(D78830)
3a	66KV LINE BY PASS BAY ARRANGEMENT	
4	66KV FEEDER BAY ARRANGEMENT (ALSTONVILLE)	(D78831)
5	66KV FEEDER BAY ARRANGEMENT (TX 1 & LISMORE STH)	LMEE111
6	66KV BUS SECTION BAY ARRANGEMENT	(D78833)
7	66KV FEEDER BAY ARRANGEMENT (LISMORE SW/ST)	(D78834)
8	66KV FEEDER BAY ARRANGEMENT (LISMORE STH)	LMEE122
9	66KV FEEDER BAY ARRANGEMENT (TX & SPARE FDR)	LMEE113
10	66KV FI PLANT #2 BAY ARRANGEMENT	078837
11	66KV BUS SECTION BAY ARRANGEMENT	(D78838)
12	66KV TX 3 & FI PLANT #1 BAY ARRANGEMENT	LMEE113
13	66KV FEEDER BAY ARRANGEMENT (LISMORE SW/ST)	(D78840)
14	66KV FEEDER BAY ARRANGEMENT (KYOGLE)	
14a	66KV LINE BY-PASS BAY ARRANGEMENT	(D78841)
15	66KV FEEDER BAY ARRANGEMENT (CASINO)	(D78842)
	66KV CAPACITOR BAY ARRANGEMENT (BANK 2)	C123149
FI SFU	66KV FI SFU BUILDING	L218C00
132KV BAY	DESCRIPTION	DWG No.
0	PROPOSED 132KV FEEDER BAY (FUTURE BALLINA)	LMEE121
1	132KV FEEDER BAY BUS (MULLIMBIMBY/DUNOON)	QM73901-001-01
2	132KV FEEDER BAY ARRANGEMENT (KOOLOOHAN) & No.1 132/66KV TRANSFORMER	LMEE108
3	132KV BUS SECTION BAY ARRANGEMENT	LMEE105
4	132KV FEEDER BAY ARRANGEMENT (TENTERFIELD) & No.2 132/66KV TRANSFORMER	LMEE109
5	132KV BUS SECTION BAY ARRANGEMENT	LMEE105
6	132KV FEEDER BAY ARRANGEMENT (RD KOOLOOHAN) & No.3 132/66KV TRANSFORMER	LMEE110
7	132KV BUS SECTION BAY ARRANGEMENT	C123171
8	132KV CAPACITOR BAY & 132KV FEEDER #UT (MULLIMBIMBY/DUNOON)	C123170 QM73901-001-01

LISMORE 132  
132/66 kV ZONE SUBSTATION  
132/66KV SUBSTATION  
GENERAL ARRANGEMENT

countryenergy		
© 2004 Country Energy		
SIZE: AO	SCALE: 1/250	
INVT	DRAWING NUMBER	AMD
1/4	LMEL100	1



DRAWN: G.BELL  
CHECKED: G.BELL  
DATE: 05/08/08  
ORIGINAL ISSUE

REFERENCE FILES

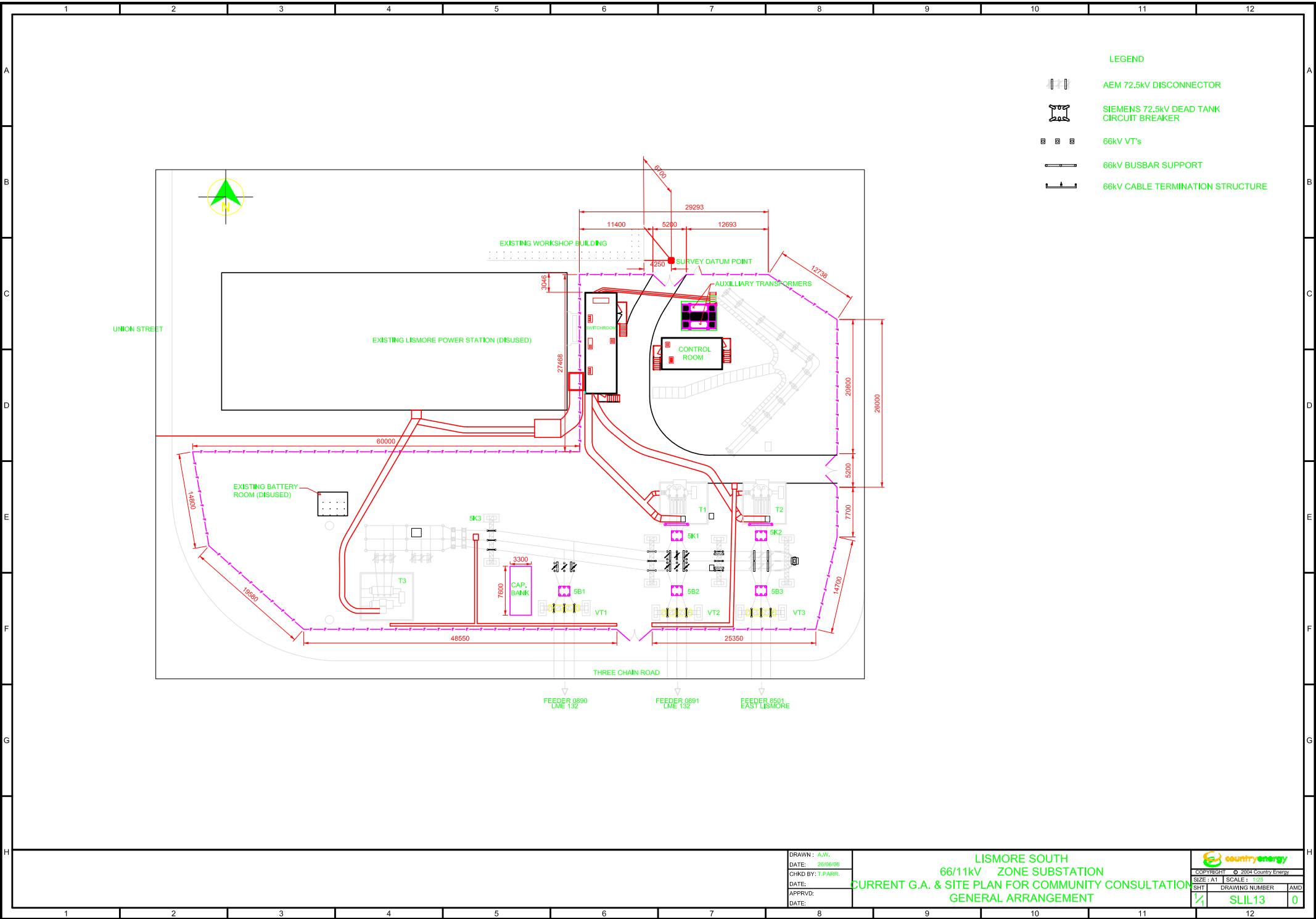
LMEE100 - SUBSTATION SINGLE LINE DIAGRAM  
LMEL100 - SUBSTATION GENERAL ARRANGEMENT  
LMEL200 - SUBSTATION FOUNDATION LAYOUT

DRAWN: G.BELL  
DATE: 05/08/08  
CHKD BY: G.BELL  
DATE: 05/08/08  
APPRVD: R.MCCUE  
DATE: 05/08/08






LISMORE 132  
132/66kV ZONE SUBSTATION  
PROPOSED FUTURE 132KV BALLINA FDR  
SWITCH YARD CROSS SECTION

countryenergy  
COPYRIGHT © 2004 Country Energy  
SIZE: A1 SCALE: 1:100  
SHT: 1/1 DRAWING NUMBER: LMEE121  
AMD: 0

## Lismore South Substation



LEGEND

-  AEM 72.5kV DISCONNECTOR
-  SIEMENS 72.5kV DEAD TANK CIRCUIT BREAKER
-  66kV VT's
-  66kV BUSBAR SUPPORT
-  66kV CABLE TERMINATION STRUCTURE

DRAWN : A.W.  
DATE: 26/06/08  
CHKD BY: T.PARR.  
DATE:  
APPRVD:  
DATE:

LISMORE SOUTH  
66/11kV ZONE SUBSTATION  
CURRENT G.A. & SITE PLAN FOR COMMUNITY CONSULTATION  
GENERAL ARRANGEMENT

COPYRIGHT © 2004 Country Energy	
SIZE: A1	SCALE: 1:25
SHT	DRAWING NUMBER
1/1	SLIL13
	0