

© Cardno (Qld) Pty Ltd All Rights Reserved 2002.
Copyright in the whole and every part of this drawing belongs to Cardno (Qld) Pty Ltd and may not be used, sold, transferred, copied or reproduced in whole or in part in any manner or form or on any media, to any person other than by agreement with Cardno (Qld) Pty Ltd.

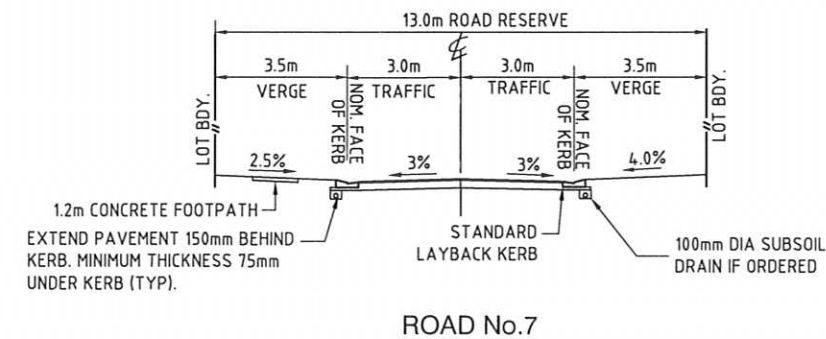
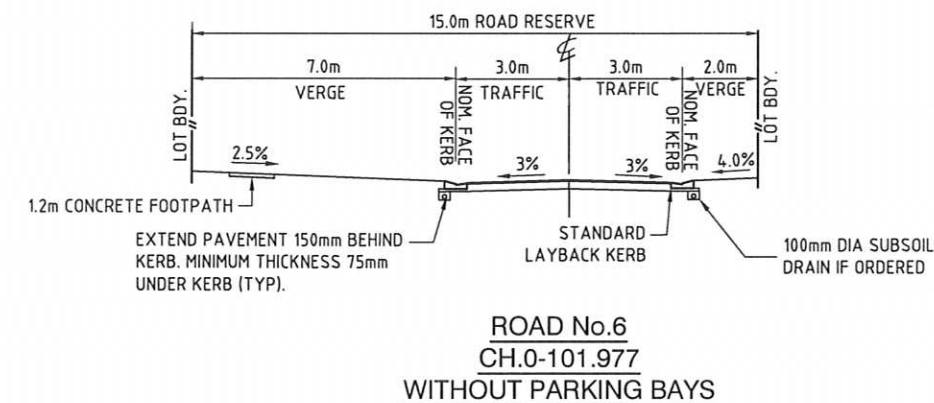
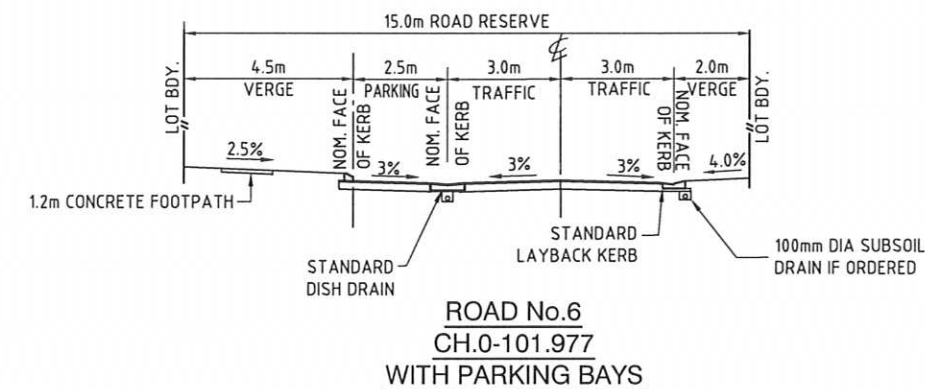
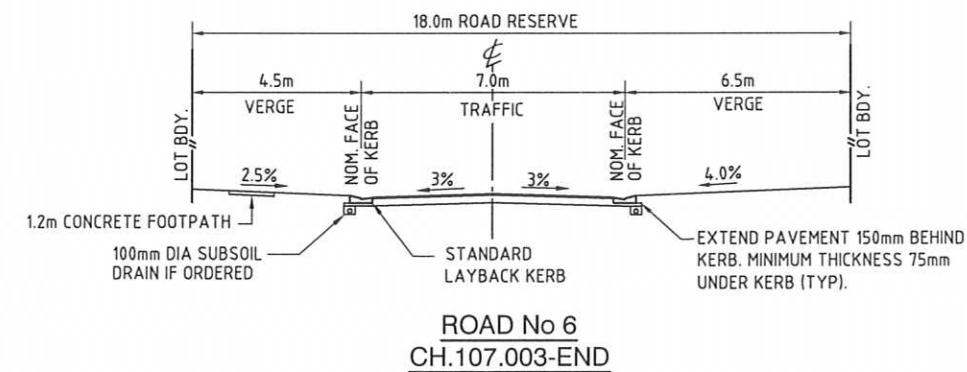
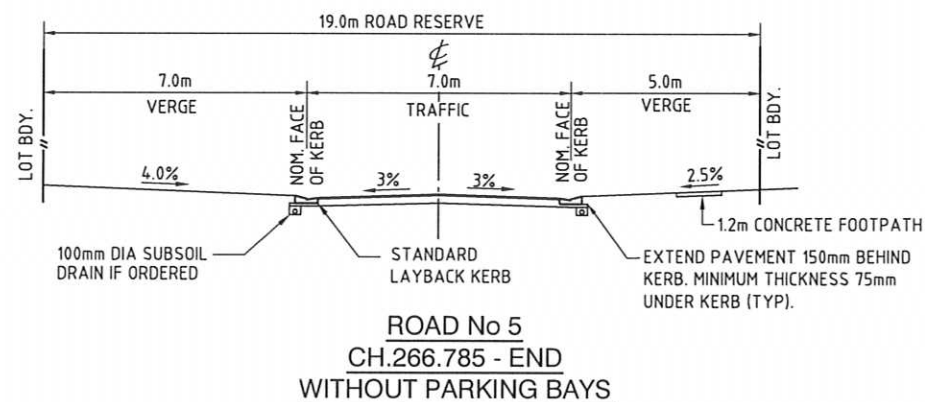
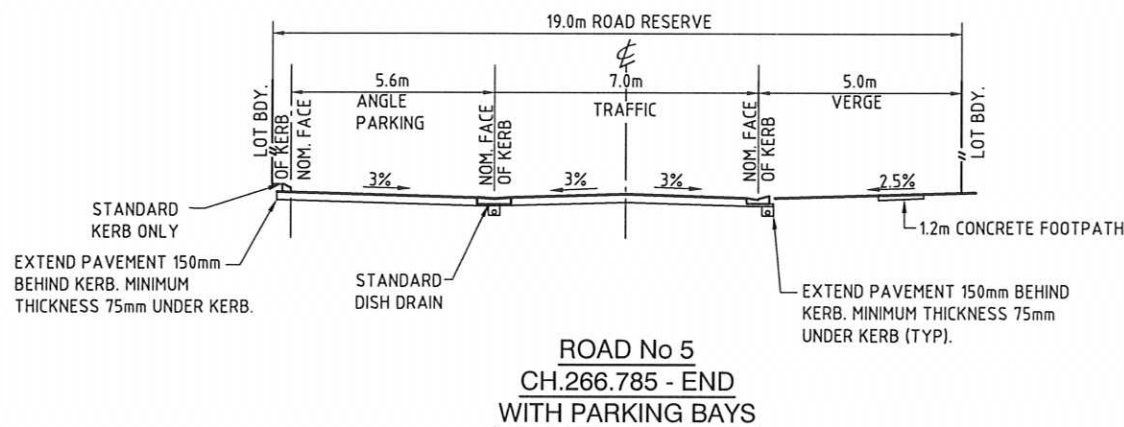
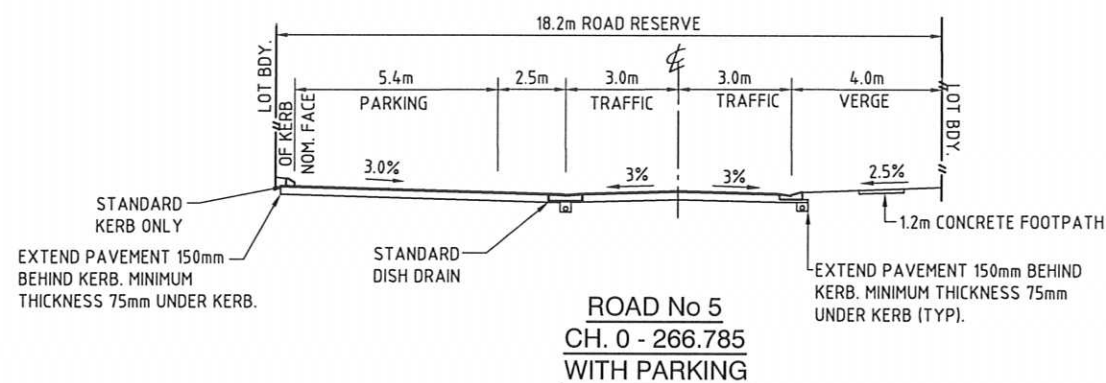
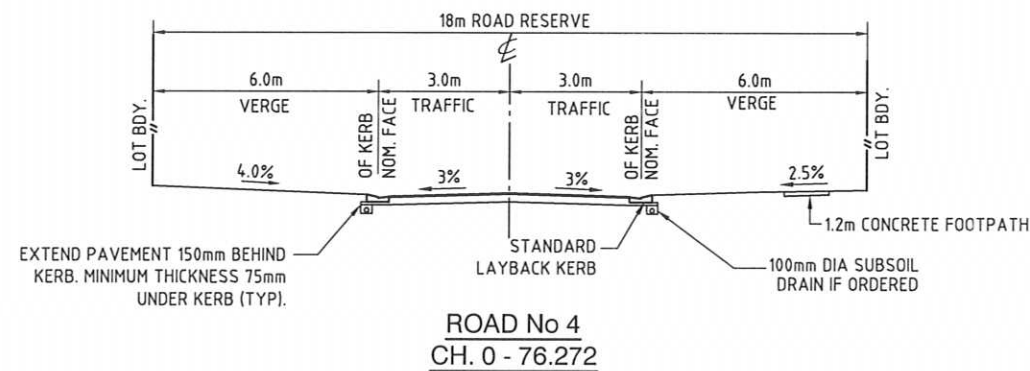
This document is produced by Cardno (Qld) Pty Ltd solely for the benefit of and use by the client in accordance with the terms of the retainer. Cardno (Qld) Pty Ltd does not and shall not assume any responsibility or liability whatsoever to any third party arising out of any use or reliance by third party on the content of this document.

Cardno
Cardno (Qld) Pty Ltd ACN: 051 074 992
Commercial Centre, Isle of Copri
Gold Coast City, Queensland 4217
Email: gco@cardno.com.au

CAD FILE NAME: G:\7079\04\01\DA Approval\70790401DA34.dwg

KINGS BEACH (No. 2) PTY LTD		
CASUARINA BEACH		SCALE :- 1: 100
TOWN CENTRE		A1
DA SUBMISSION		DATE :- 10 JULY, 2007
		REV. D
		DRAWING No.
		7079/4/1-FIG DA34

FIGURE No. DA34D(06/02/09)
TYPICAL CROSS SECTIONS
SHEET 1



2 1 0 2 4 6 8m
SCALE BEFORE REDUCTION 1:100

© Cardno (Qld) Pty Ltd All Rights Reserved 2002.

Copyright in the whole and every part of this drawing belongs to Cardno (Qld) Pty Ltd and may not be used, sold, transferred, copied or reproduced in whole or in part in any manner or form or on any media, to any person other than by agreement with Cardno (Qld) Pty Ltd.

This document is produced by Cardno (Qld) Pty Ltd solely for the benefit of and use by the client in accordance with the terms of the retainer. Cardno (Qld) Pty Ltd does not and shall not assume any responsibility or liability whatsoever to any third party arising out of any use or reliance by third party on the content of this document.



Cardno (Qld) Pty Ltd ACN: 051 074 992
Commercial Centre, Isle of Capri
Gold Coast City, Queensland 4217
Email: gco@cardno.com.au

CAD FILE NAME: G:\7079\04\01\DA Approval\70790401DA35.dwg

KINGS BEACH (No. 2) PTY LTD

CASUARINA BEACH
TOWN CENTRE
DA SUBMISSION

SCALE: 1:100
DATE: 10 JULY, 2007
REV: F
DRAWING No.
7079/4/1-FIG DA35

FIGURE No.DA35F(20/01/09)
TYPICAL CROSS SECTIONS
SHEET 2



20 10 0 20 40 60 80m
SCALE BEFORE REDUCTION 1: 1000

© Cardno (Qld) Pty Ltd All Rights Reserved 2002.
Copyright in the whole and every part of this drawing belongs to Cardno (Qld) Pty Ltd and may not be used, sold, transferred, copied or reproduced in whole or in part in any manner or form or on any media, to any person other than by agreement with Cardno (Qld) Pty Ltd.

This document is produced by Cardno (Qld) Pty Ltd solely for the benefit of and use by the client in accordance with the terms of the retainer. Cardno (Qld) Pty Ltd does not and shall not assume any responsibility or liability whatsoever to any third party arising out of any use or reliance by third party on the content of this document.



Cardno (Qld) Pty Ltd ACN: 051 074 992
Commercial Centre, Isle of Capri
Gold Coast City, Queensland 4217
Email: gco@cardno.com.au

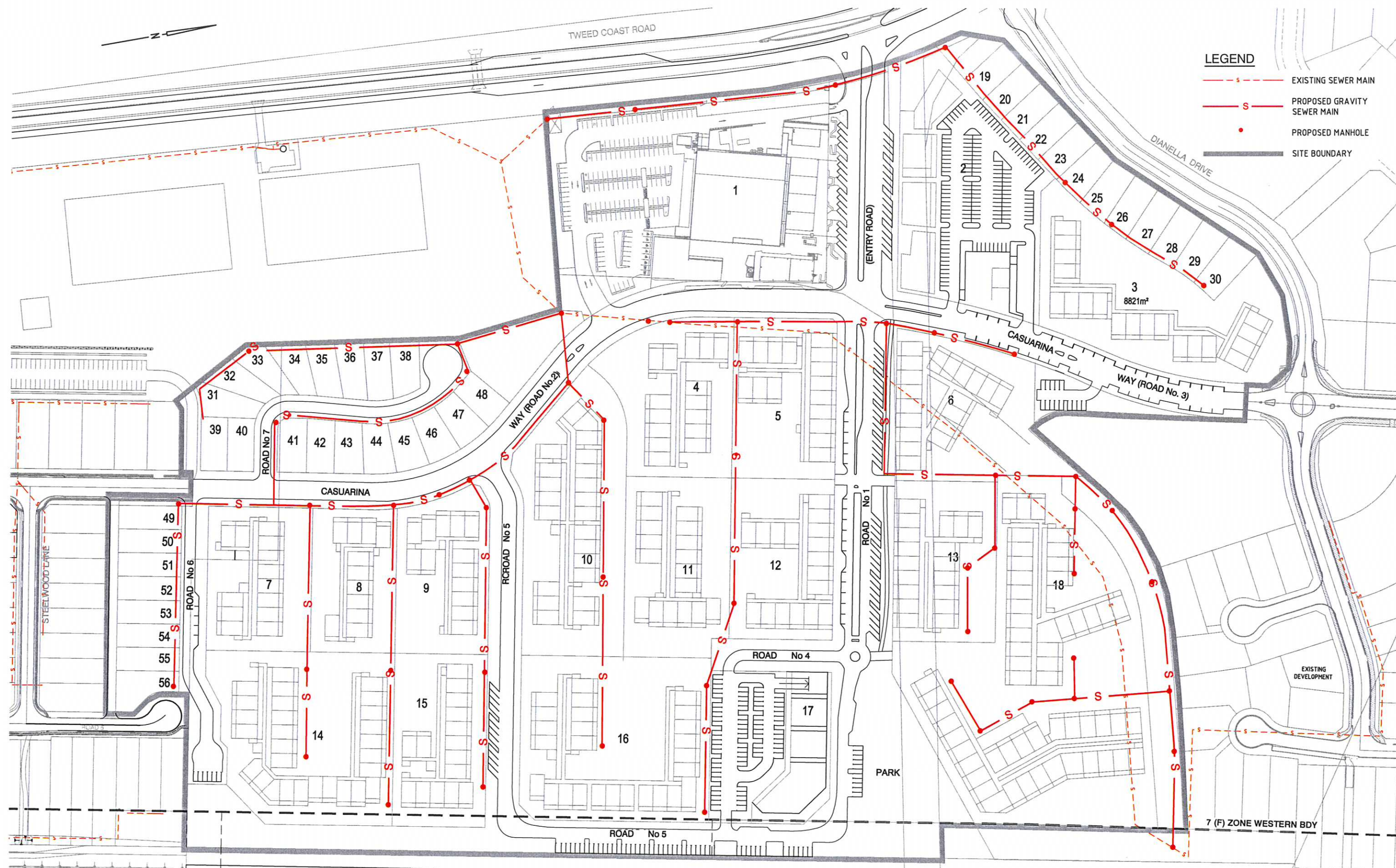
KINGS BEACH (No. 2) PTY LTD

CASUARINA BEACH
TOWN CENTRE
DA SUBMISSION

SCALE :- 1:1000 A1
DATE :- 10 JULY, 2007 REV. G
DRAWING No.
7079/4/1-FIG DA36

FIGURE No.DA36G(30/01/09)

CATCHMENT AREAS AND
DRAINAGE PATHS



20 10 0 20 40 60 80m
SCALE BEFORE REDUCTION 1:1000

© Cardno (Qld) Pty Ltd All Rights Reserved 2002.
Copyright in the whole and every part of this drawing belongs to Cardno (Qld) Pty Ltd and may not be used, sold, transferred, copied or reproduced in whole or in part in any manner or form or on any media, to any person other than by agreement with Cardno (Qld) Pty Ltd.

This document is produced by Cardno (Qld) Pty Ltd solely for the benefit of and use by the client in accordance with the terms of the retainer. Cardno (Qld) Pty Ltd does not and shall not assume any responsibility or liability whatsoever to any third party arising out of any use or reliance by third party on the content of this document.



Cardno (Qld) Pty Ltd ACN: 051 074 992
Commercial Centre, Isle of Coppi
Gold Coast City, Queensland 4217
Email: gco@cardno.com.au

KINGS BEACH (No. 2) PTY LTD

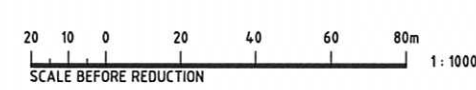
CASUARINA BEACH
TOWN CENTRE
DA SUBMISSION

SCALE :- 1:1000 A1
DATE :- 10 JULY, 2007 REV. H
DRAWING No.
7079/4/1-FIG DA37

FIGURE No.DA37H(29/01/09)
SEWER RETICULATION
LAYOUT PLAN



- LEGEND**
- Ø250 WATERMAIN
 - Ø150 WATERMAIN
 - Ø100 WATERMAIN
 - Ø63 WATERMAIN
 - EXISTING WATERMAIN
 - SITE BOUNDARY



© Cardno (Qld) Pty Ltd All Rights Reserved 2002.
 Copyright in the whole and every part of this drawing belongs to Cardno (Qld) Pty Ltd and may not be used, sold, transferred, copied or reproduced in whole or in part in any manner or form or on any media, to any person other than by agreement with Cardno (Qld) Pty Ltd.

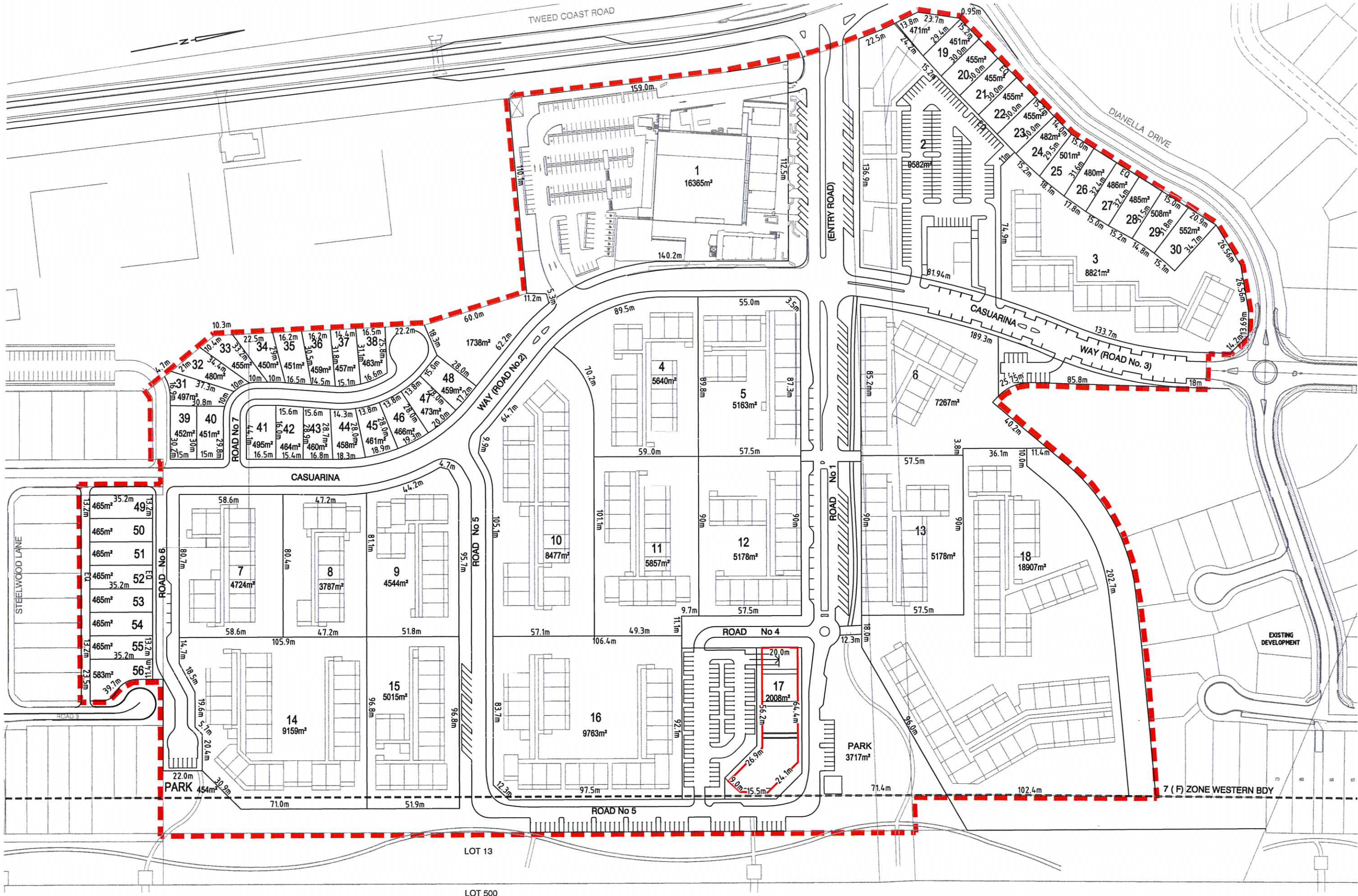
This document is produced by Cardno (Qld) Pty Ltd solely for the benefit of and use by the client in accordance with the terms of the retainer. Cardno (Qld) Pty Ltd does not and shall not assume any responsibility or liability whatsoever to any third party arising out of any use or reliance by third party on the content of this document.



KINGS BEACH (No. 2) PTY LTD	
CASUARINA BEACH	
TOWN CENTRE	
DA SUBMISSION	
SCALE :- 1:1000	A1
DATE :- 10 JULY, 2007	REV. G
DRAWING No.	7079/4/1-FIG DA38

FIGURE No.DA38G(30/01/09)

WATER RETICULATION LAYOUT PLAN



20 10 0 20 40 60 80m
SCALE BEFORE REDUCTION 1:1000

CAD FILE NAME: G:\7079\04\101\DA Approval\70790401DA39.dwg

© Cardno (Qld) Pty Ltd All Rights Reserved 2002.
Copyright in the whole and every part of this drawing belongs to Cardno (Qld) Pty Ltd and may not be used, sold, transferred, copied or reproduced in whole or in part in any manner or form or on any media, to any person other than by agreement with Cardno (Qld) Pty Ltd.

This document is produced by Cardno (Qld) Pty Ltd solely for the benefit of and use by the client in accordance with the terms of the retainer. Cardno (Qld) Pty Ltd does not and shall not assume any responsibility or liability whatsoever to any third party arising out of any use or reliance by third party on the content of this document.


Cardno (Qld) Pty Ltd ACN: 051 074 992
Commercial Centre, Isle of Copri
Gold Coast City, Queensland 4217
Email: gco@cardno.com.au

KINGS BEACH (No. 2) PTY LTD		
CASUARINA BEACH		
TOWN CENTRE		
DA SUBMISSION		
SCALE :- 1:1000	A1	
DATE :- 18 OCTOBER, 2007	REV. H	
DRAWING No.	7079/4/1-FIG DA39	

FIGURE No.DA39H(18/02/09)
SUBDIVISION
LAYOUT PLAN



20 10 0 20 40 60 80m
SCALE BEFORE REDUCTION 1:1000

© Cardno (Qld) Pty Ltd All Rights Reserved 2002.
Copyright in the whole and every part of this drawing belongs to Cardno (Qld) Pty Ltd and may not be used, sold, transferred, copied or reproduced in whole or in part in any manner or form or on any media, to any person other than by agreement with Cardno (Qld) Pty Ltd.

This document is produced by Cardno (Qld) Pty Ltd solely for the benefit of and use by the client in accordance with the terms of the retainer. Cardno (Qld) Pty Ltd does not and shall not assume any responsibility or liability whatsoever to any third party arising out of any use or reliance by third party on the content of this document.

Cardno
Cardno (Qld) Pty Ltd ACN: 051 074 992
Commercial Centre, Isle of Capri
Gold Coast City, Queensland 4217
Email: gco@cardno.com.au

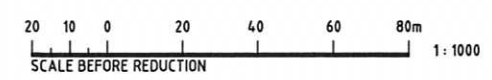
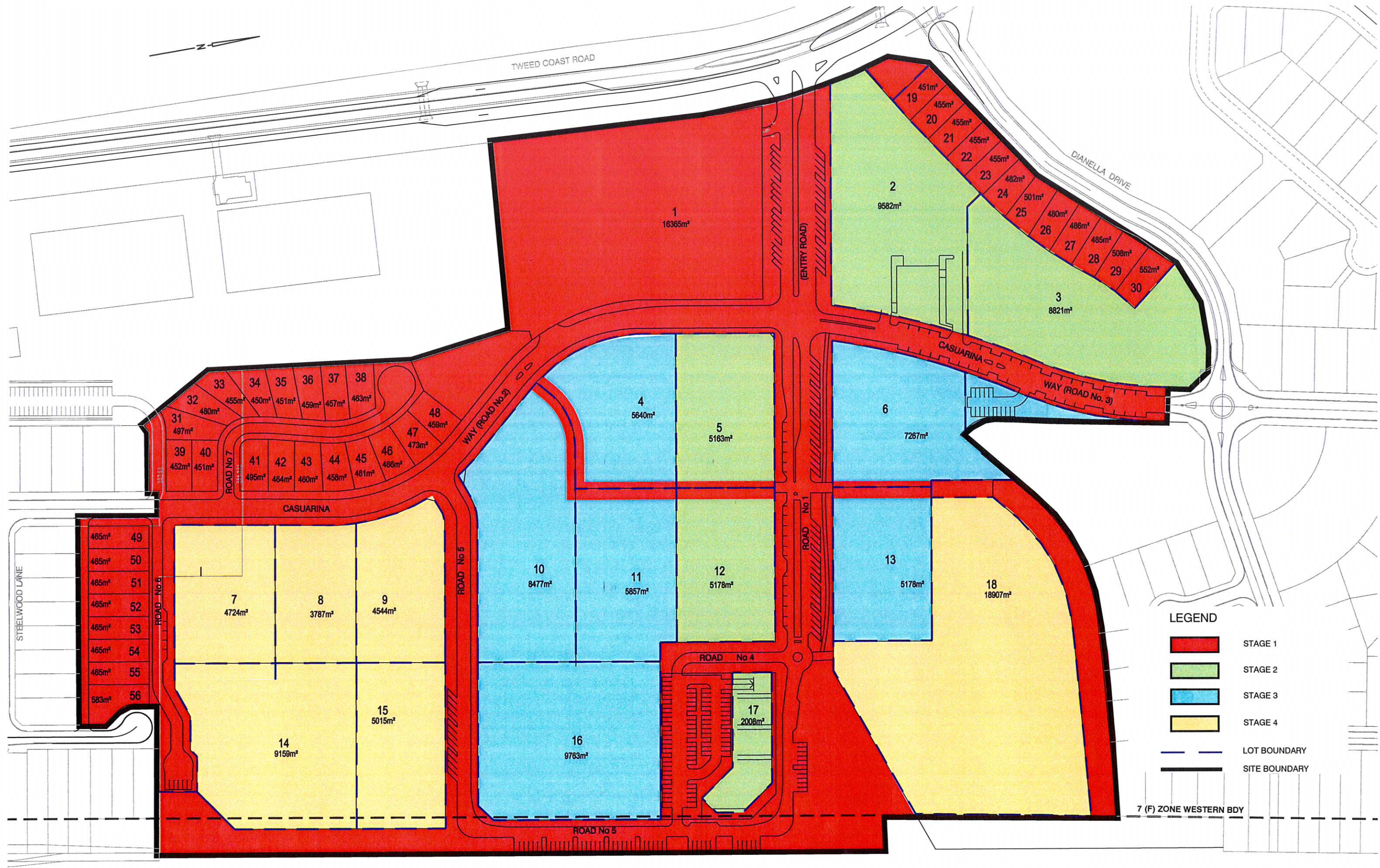
KINGS BEACH (No. 2) PTY LTD

CASUARINA BEACH
TOWN CENTRE
DA SUBMISSION

SCALE :- 1:1000 A1
DATE :- 17 DECEMBER, 2007 REV. J
DRAWING No.
7079/4/1-FIG DA40

FIGURE No.DA40J(18/02/09)

DEDICATION AND
EASEMENT PLAN



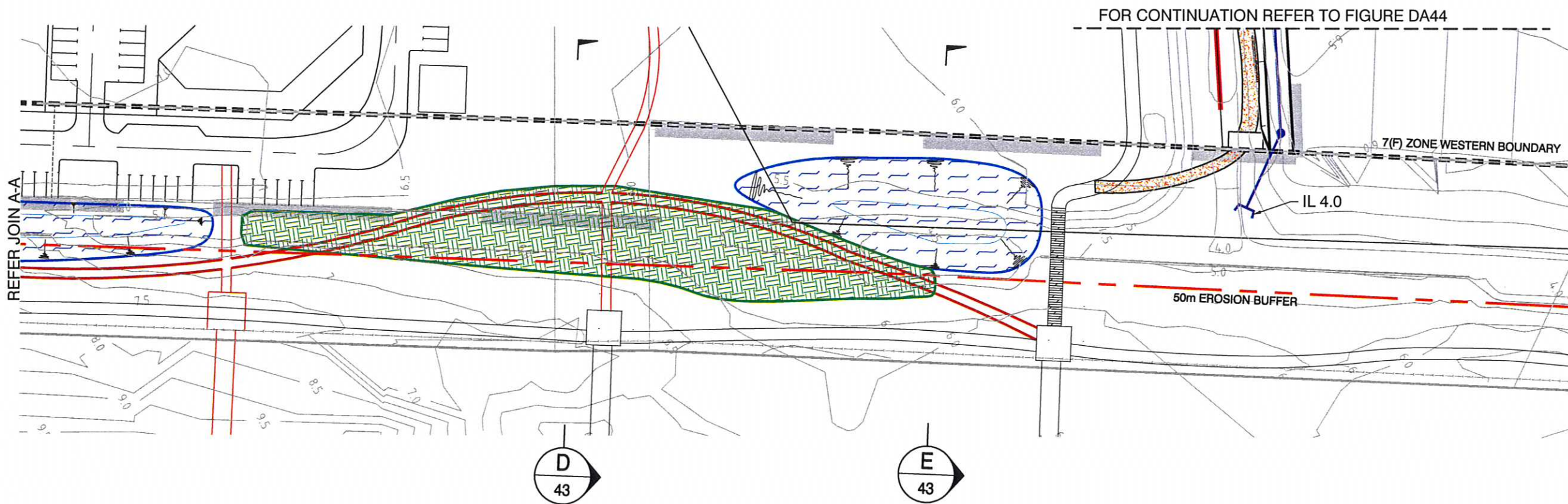
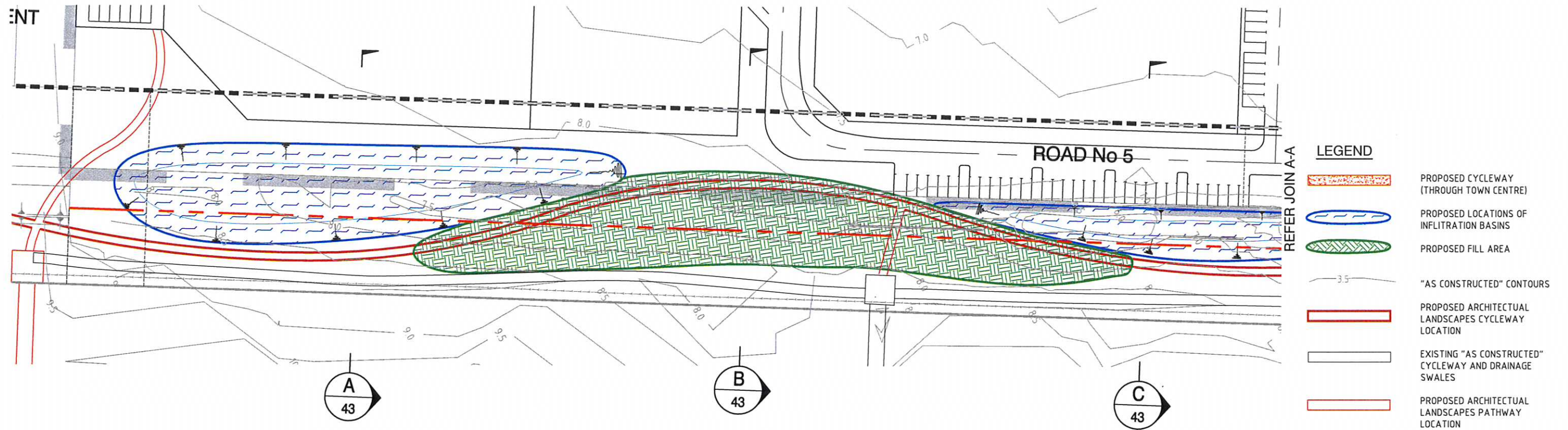
© Cardno (Qld) Pty Ltd All Rights Reserved 2002.
 Copyright in the whole and every part of this drawing belongs to Cardno (Qld) Pty Ltd and may not be used, sold, transferred, copied or reproduced in whole or in part in any manner or form or on any media, to any person other than by agreement with Cardno (Qld) Pty Ltd.

This document is produced by Cardno (Qld) Pty Ltd solely for the benefit of and use by the client in accordance with the terms of the retainer. Cardno (Qld) Pty Ltd does not and shall not assume any responsibility or liability whatsoever to any third party arising out of any use or reliance by third party on the content of this document.



KINGS BEACH (No. 2) PTY LTD		
CASUARINA BEACH		
TOWN CENTRE		
DA SUBMISSION		
SCALE :- 1:1000	A1	
DATE :- 17 DECEMBER, 2007	REV. G	
DRAWING No.	7079/4/1-FIG DA41	

FIGURE No. DA41G(30/01/09)
STAGING PLAN



10 5 0 10 20 30 40m
SCALE BEFORE REDUCTION 1:500

© Cardno (Qld) Pty Ltd All Rights Reserved 2008
Copyright in the whole and every part of this drawing belongs to Cardno (Qld) Pty Ltd and may not be used, sold, transferred, copied or reproduced in whole or in part in any manner or form or on any media, to any person other than by agreement with Cardno (Qld) Pty Ltd.

This document is produced by Cardno (Qld) Pty Ltd solely for the benefit of and use by the client in accordance with the terms of the retainer. Cardno (Qld) Pty Ltd does not and shall not assume any responsibility or liability whatsoever to any third party arising out of any use or reliance by third party on the content of this document.

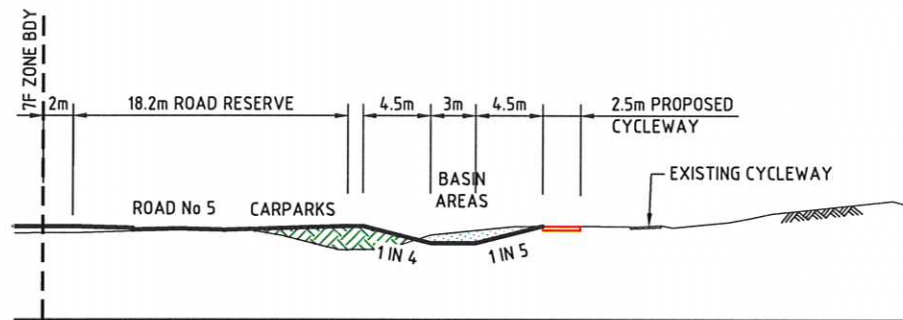
Cardno
Cardno (Qld) Pty Ltd ACN: 051 074 992
Commercial Centre, Isle of Capri
Gold Coast City, Queensland 4217
Email: gco@cardno.com.au

KINGS BEACH (No. 2) PTY LTD

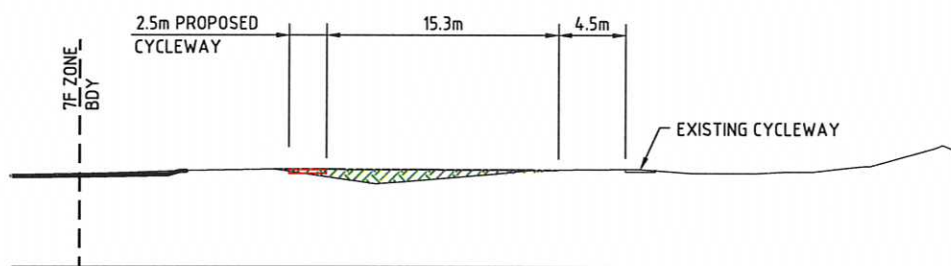
CASUARINA BEACH
TOWN CENTRE
DA SUBMISSION R.F.I

SCALE :- 1:500 A1
DATE :- 20 NOVEMBER, 2008 REV.
JOB No.
7079/4/1-FIG DA42

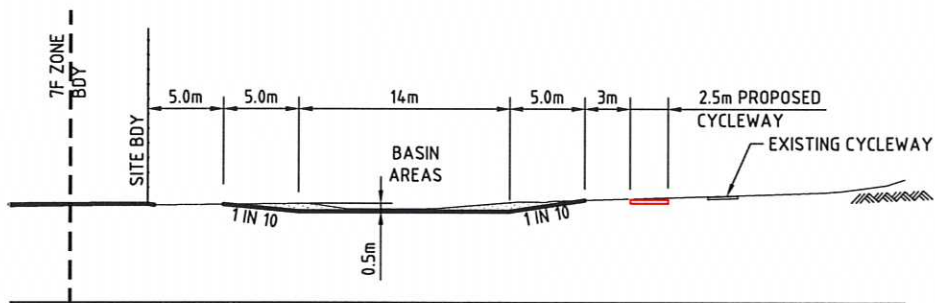
FIGURE No. DA42 (30/01/09)
**PROPOSED FRONTAL CYCLEWAY/
INFILTRATION BASINS LAYOUT PLAN**



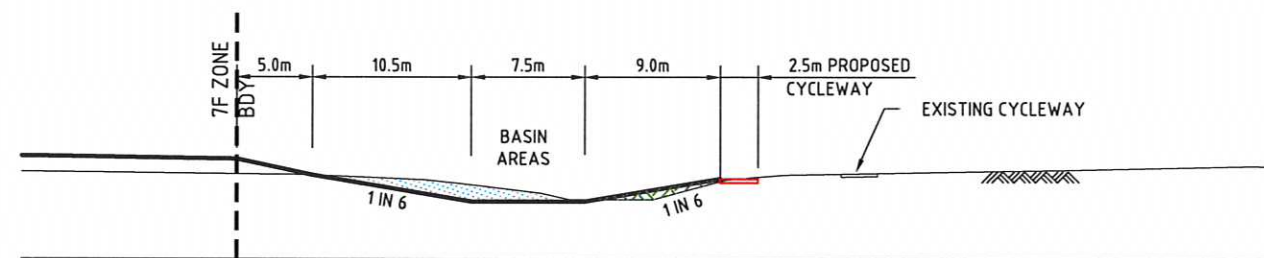
SECTION C
SCALE 1:250



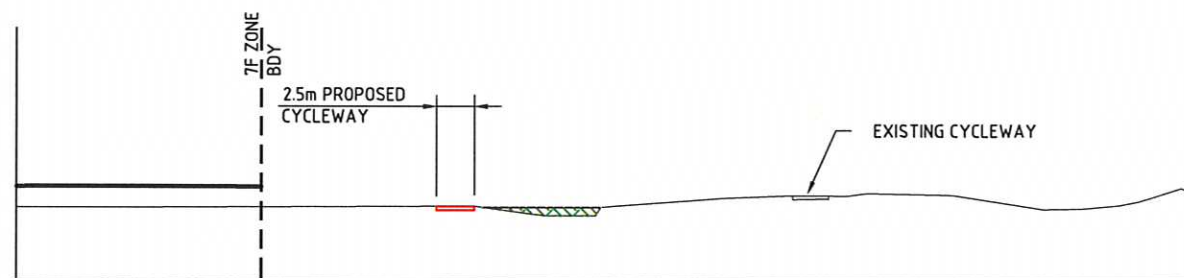
SECTION B
SCALE 1:250



SECTION A
SCALE 1:250



SECTION E
SCALE 1:250



SECTION D
SCALE 1:250

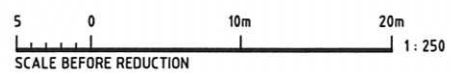
LEGEND



PROPOSED FILL AREA



PROPOSED CUT AREA



© Cardno (Qld) Pty Ltd All Rights Reserved 2008.
Copyright in the whole and every part of this drawing belongs to Cardno (Qld) Pty Ltd and may not be used, sold, transferred, copied or reproduced in whole or in part in any manner or form or on any media, to any person other than by agreement with Cardno (Qld) Pty Ltd.

This document is produced by Cardno (Qld) Pty Ltd solely for the benefit of and use by the client in accordance with the terms of the retainer. Cardno (Qld) Pty Ltd does not and shall not assume any responsibility or liability whatsoever to any third party arising out of any use or reliance by third party on the content of this document.



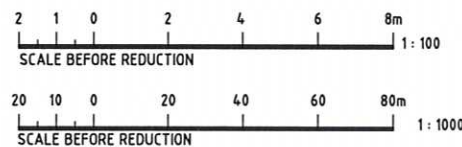
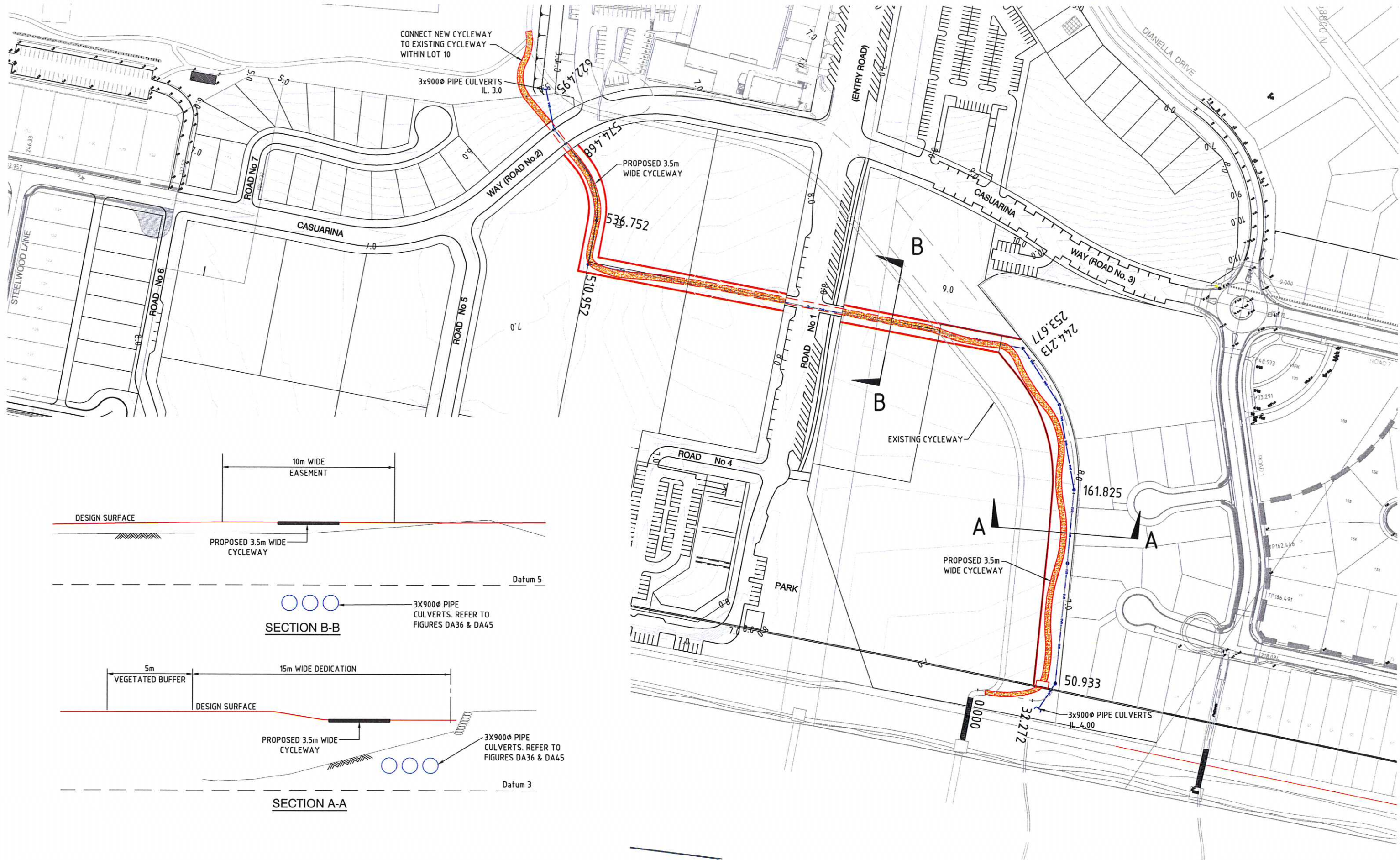
KINGS BEACH (No. 2) PTY LTD

CASUARINA BEACH
TOWN CENTRE
DA SUBMISSION R.F.I

SCALE 1:250
DATE 20 NOVEMBER, 2008
DRAWING No. 7079/4/1-FIG DA43

FIGURE No. DA43 (30/01/09)

PROPOSED FRONTAL CYCLEWAY/
INFILTRATION BASINS CROSS SECTIONS



© Cardno (Qld) Pty Ltd All Rights Reserved 2008
Copyright in the whole and every part of this drawing belongs to Cardno (Qld) Pty Ltd and may not be used, sold, transferred, copied or reproduced in whole or in part in any manner or form or on any media, to any person other than by agreement with Cardno (Qld) Pty Ltd.

This document is produced by Cardno (Qld) Pty Ltd solely for the benefit of and use by the client in accordance with the terms of the retainer. Cardno (Qld) Pty Ltd does not and shall not assume any responsibility or liability whatsoever to any third party arising out of any use or reliance by third party on the content of this document.

Cardno

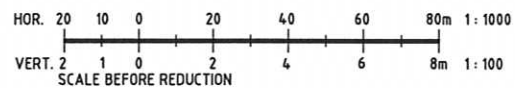
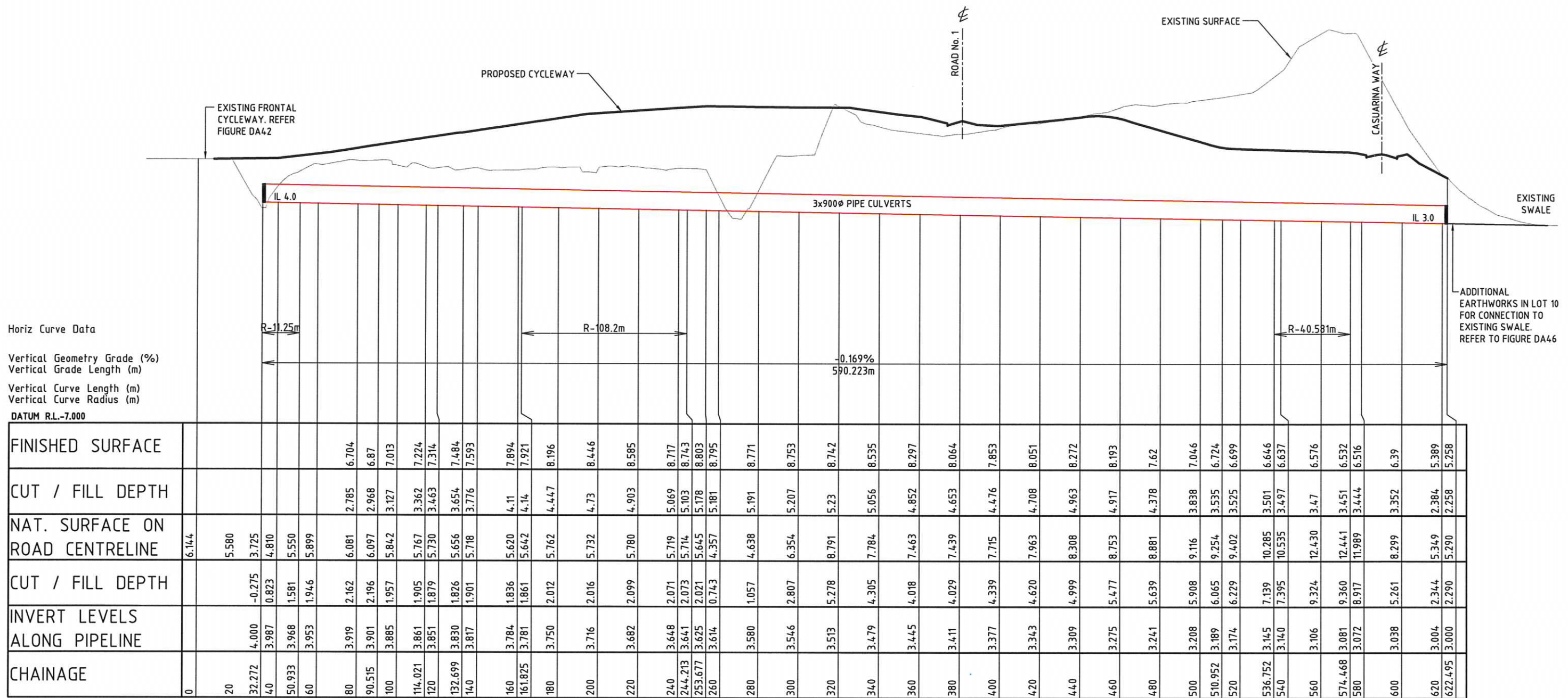
Cardno (Qld) Pty Ltd ACN: 051 074 992
Commercial Centre, Isle of Capri
Gold Coast City, Queensland 4217
Email: gco@cardno.com.au

KINGS BEACH (No. 2) PTY LTD

CASUARINA BEACH
TOWN CENTRE
DA SUBMISSION R.F.I

SCALE ~ AS SHOWN	A1
DATE ~ 20 NOVEMBER, 2008	REV.
JOB No.	7079/4/1-FIG DA44

FIGURE No. DA44 (30/01/09)
PROPOSED CYCLEWAY/DRAINAGE
RE-ALIGNMENT LAYOUT PLAN



© Cardno (Qld) Pty Ltd All Rights Reserved 2008

Copyright in the whole and every part of this drawing belongs to Cardno (Qld) Pty Ltd and may not be used, sold, transferred, copied or reproduced in whole or in part in any manner or form or on any media, to any person other than by agreement with Cardno (Qld) Pty Ltd.

This document is produced by Cardno (Qld) Pty Ltd solely for the benefit of and use by the client in accordance with the terms of the retainer. Cardno (Qld) Pty Ltd does not and shall not assume any responsibility or liability whatsoever to any third party arising out of any use or reliance by third party on the content of this document.

Cardno

Cardno (Qld) Pty Ltd ACN: 051 074 992

Commercial Centre, Isle of Copri

Gold Coast City, Queensland 4217

Email: gco@cardno.com.au

KINGS BEACH (No. 2) PTY LTD

CASUARINA BEACH

TOWN CENTRE

DA SUBMISSION R.F.I

SCALE :- AS SHOWN A1

DATE :- 20 NOVEMBER, 2008 REV.

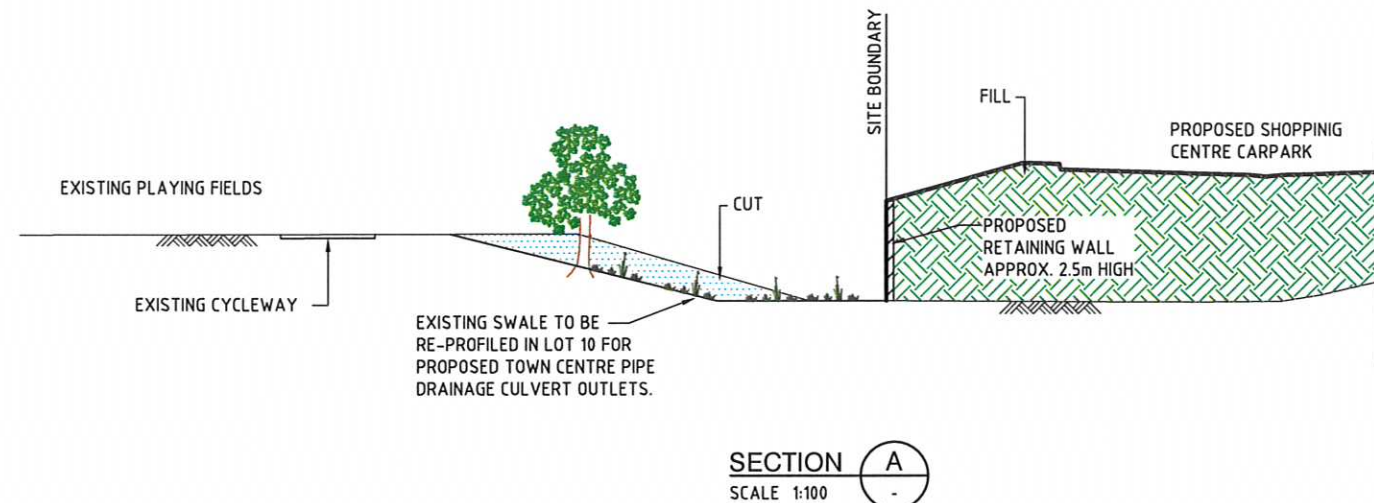
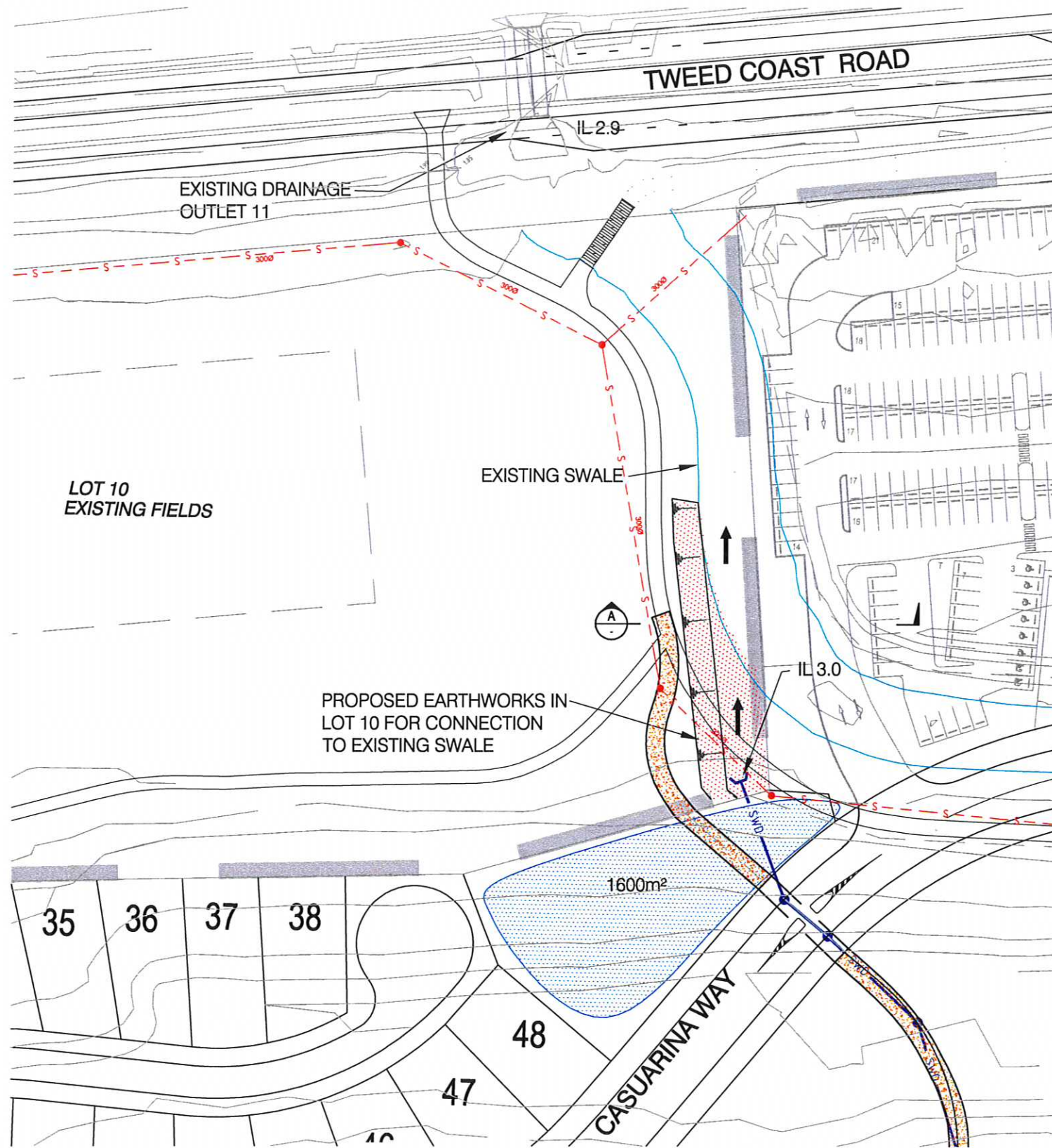
JOB No.

7079/4/1-FIG DA45

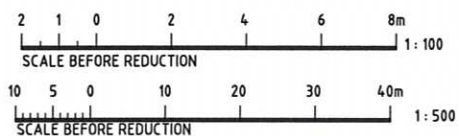
FIGURE No. DA45 (30/01/09)

PROPOSED CYCLEWAY/DRAINAGE

RE-ALIGNMENT LONGSECTION



- LEGEND**
- PROPOSED LOCATIONS OF INFILTRATION BASINS
 - PROPOSED STORMWATER DRAINAGE
 - PROPOSED DESIGN CONTOURS
 - EXISTING SWALE
 - EXISTING CYCLEWAY
 - PROPOSED CYCLEWAY
 - EXISTING SEWER



© Cardno (Qld) Pty Ltd All Rights Reserved 2008
 Copyright in the whole and every part of this drawing belongs to Cardno (Qld) Pty Ltd and may not be used, sold, transferred, copied or reproduced in whole or in part in any manner or form or on any media, to any person other than by agreement with Cardno (Qld) Pty Ltd.
 This document is produced by Cardno (Qld) Pty Ltd solely for the benefit of and use by the client in accordance with the terms of the retainer. Cardno (Qld) Pty Ltd does not and shall not assume any responsibility or liability whatsoever to any third party arising out of any use or reliance by third party on the content of this document.

Cardno
 Cardno (Qld) Pty Ltd ACN: 051 074 992
 Commercial Centre, Isle of Capri
 Gold Coast City, Queensland 4217
 Email: gco@cardno.com.au

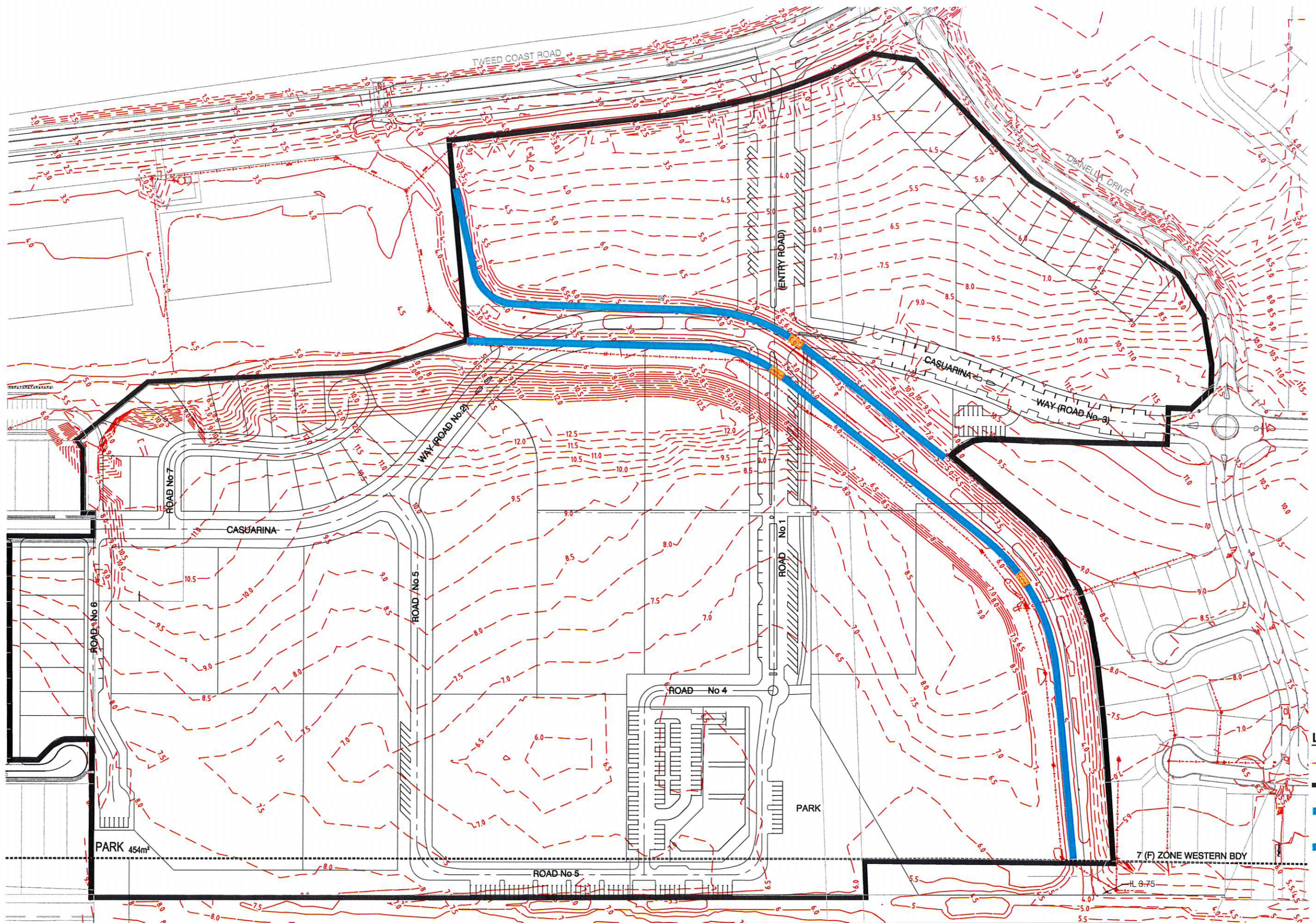
KINGS BEACH (No. 2) PTY LTD

CASUARINA BEACH
 TOWN CENTRE
 DA SUBMISSION R.F.1

SCALE: 1:500
 DATE: 20 NOVEMBER, 2008
 JOB No. 7079/4/1-FIG DA46
 A1
 REV.

FIGURE No. DA46 (30/01/09)

PROPOSED ADDITIONAL
 WORKS IN LOT 10



LEGEND:

- EXISTING CONTOURS
- SITE BOUNDARY
- PROPOSED RETAINING WALL (MAX. 4m HIGH)
- PROVIDE BRIDGING ACCESS (LOCATION SHOWN ARE INDICATIVE ONLY)

20 10 0 20 40 60 80
SCALE BEFORE REDUCTION 1:2000

CAD FILE NAME: G:\7079\04\01\DA Approval\707904\01DA47A.dwg

© Cardno (Qld) Pty Ltd All Rights Reserved 2002.
Copyright in the whole and every part of this drawing belongs to Cardno (Qld) Pty Ltd and may not be used, sold, transferred, copied or reproduced in whole or in part in any manner or form or on any media, to any person other than by agreement with Cardno (Qld) Pty Ltd.

This document is produced by Cardno (Qld) Pty Ltd solely for the benefit of and use by the client in accordance with the terms of the retainer. Cardno (Qld) Pty Ltd does not and shall not assume any responsibility or liability whatsoever to any third party arising out of any use or reliance by third party on the content of this document.

 **Cardno**
Cardno (Qld) Pty Ltd ACN: 051 074 992
Commercial Centre, Isle of Capri
Gold Coast City, Queensland 4217
Email: gco@cardno.com.au

KINGS BEACH (No. 2) PTY LTD	
CASUARINA BEACH	
TOWN CENTRE	
DA SUBMISSION	
SCALE :- 1:2000	A1
DATE :- 10 JULY, 2007	REV. A
DRAWING No.	7079/4/1-FIG DA47

FIGURE No. DA47A(26/02/09)
PROPOSED RETAINING WALL