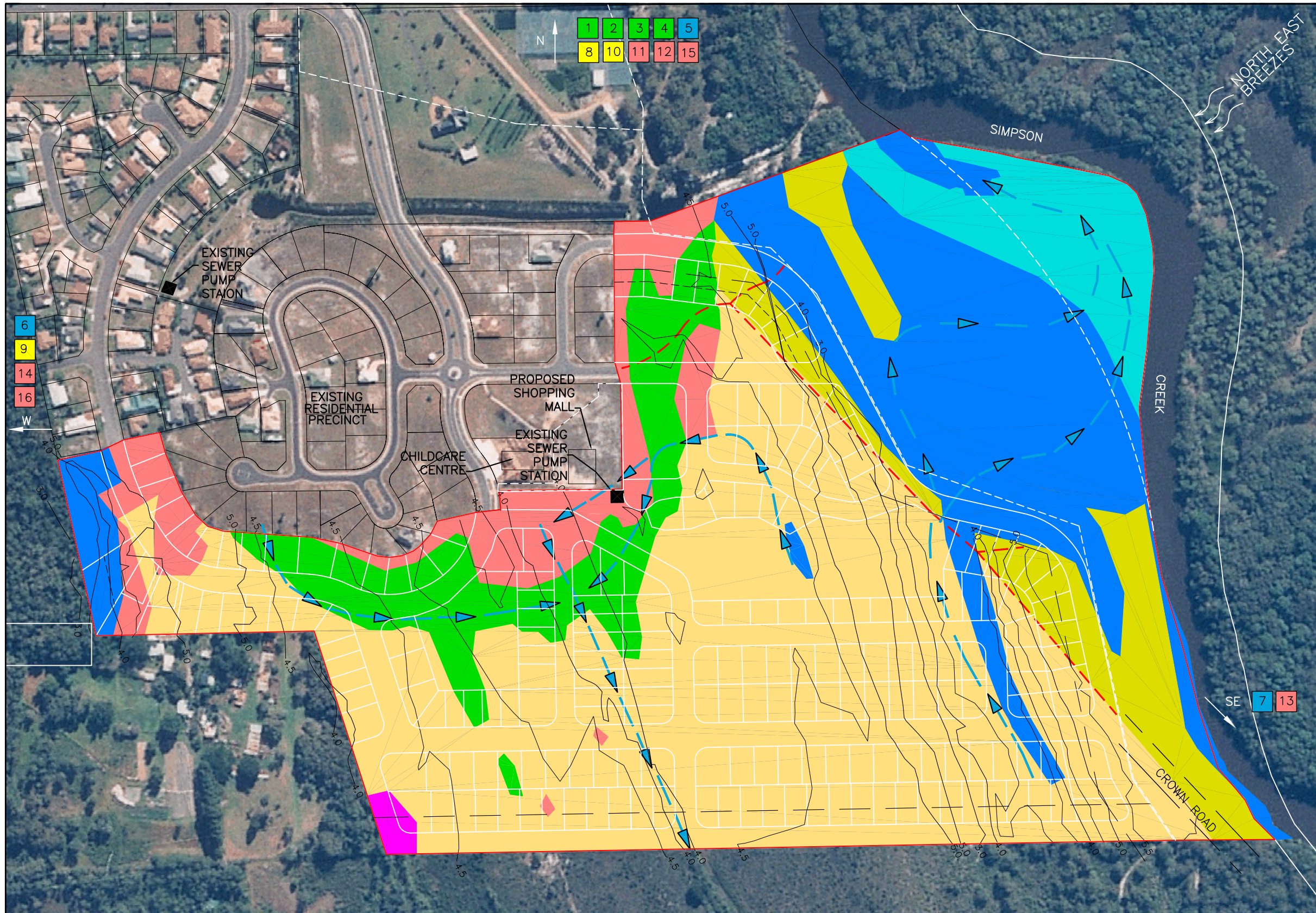


APPENDIX B

SITE ANALYSIS & CONSTRAINTS

BLUELAND ENGINEERS



LEGEND

- COMMUNITY 1
TALL CLOSED WET SCLEROPHYLL FOREST
- COMMUNITY 2
TALL OPEN WET SCLEROPHYLL FOREST
- COMMUNITY 3
TALL OPEN DRY SCLEROPHYLL FOREST
- COMMUNITY 4
MANGROVES
- COMMUNITY 5
HEATH COMMUNITIES
- COMMUNITY 6
LOW OPEN GRASSLAND COMMUNITIES
- COMMUNITY 7
DRAINAGE LINES / CANALS
- EXISTING DRAINAGE LINES
- EXISTING TRACK

NOTE:
THE ENTIRE SITE IS COMPRISED OF THE TYAGARAH SOIL LANDSCAPE ACCORDING TO THE DEPARTMENT OF CONSERVATION AND LAND MANAGEMENT LISMORE-BALLINA SOIL LANDSCAPE SERIES SHEETS 9540-9640 (1994)

CODLEA PTY LTD
PROPOSED RESIDENTIAL SUBDIVISION

LOT 73 DP B51902
BAYSIDE BRUNSWICK
BRUNSWICK HEADS

FIGURE 10.0
SITE ANALYSIS

SPORT & RECREATIONAL FACILITIES

- 1 PLAYING FIELDS - 0.6km
- 2 BRUNSWICK HEADS BOWLING CLUB - 0.5km
- 3 TENNIS COURTS - 1.25km
- 4 BRUNSWICK HEADS SURF LIFE SAVING CLUB - 1.9km

RETAIL CENTRES

- 5 EXISTING SHOPS - 1.8km
- 6 MULLUMBIMBY RETAIL CENTRE - 4.5km
- 7 BYRON BAY RETAIL CENTRE - 12km

EDUCATIONAL FACILITIES

- 8 BRUNSWICK HEADS PUBLIC SCHOOL - 1.6km
- 9 MULLUMBIMBY HIGH SCHOOL - 5km
- 10 BRUNSWICK HEADS LIBRARY - 1.6km

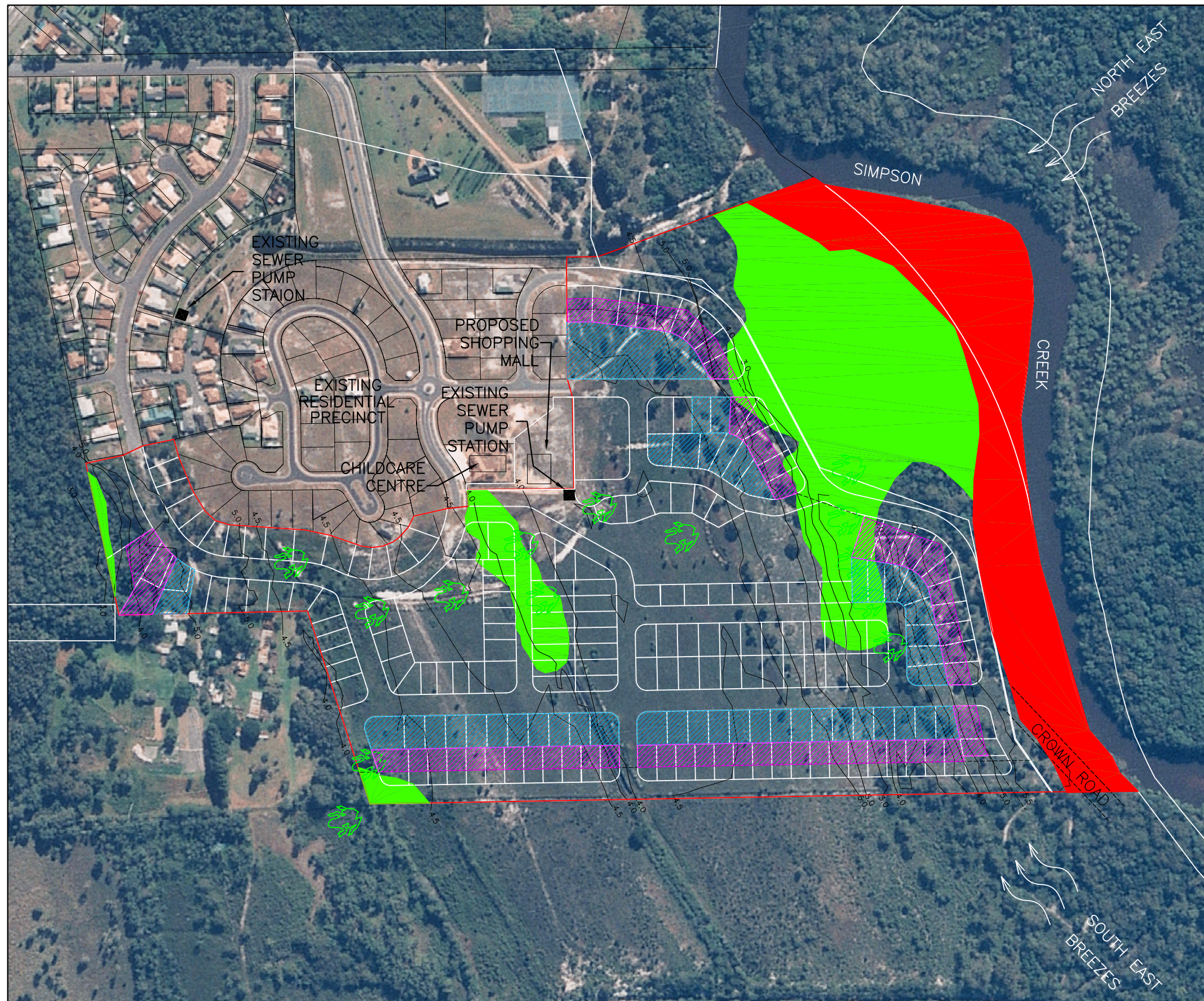
EMERGENCY SERVICES & PUBLIC FACILITIES

- 11 FIRE STATION - 1.9km
- 12 POLICE - 1.6km
- 13 BYRON DISTRICT HOSPITAL - 12km
- 14 MULLUMBIMBY & DISTRICT WAR MEMORIAL HOSPITAL - 5.6km
- 15 POST OFFICE - 1.6km
- 16 COUNCIL CHAMBERS - 4.5km

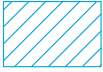





0 20 40 60 m
1:1,500 UNREDUCED

SOUTH EAST
BREEZES

blueLAND
engineers
Your consulting civil & structural engineers



LEGEND

-  MEDIUM CATERGORY OF BUSHFIRE ATTACK
-  HIGH CATERGORY OF BUSHFIRE ATTACK
-  SUBJECT LAND
-  SEPP 14 WETLAND
-  FLOOD LIABLE LAND
-  WALLUM FROGLET RECORDS

CODLEA PTY LTD
PROPOSED RESIDENTIAL SUBDIVISION

LOT 73 DP B51902
BAYSIDE BRUNSWICK
BRUNSWICK HEADS

FIGURE No. 11.0
SITE CONSTRAINTS

