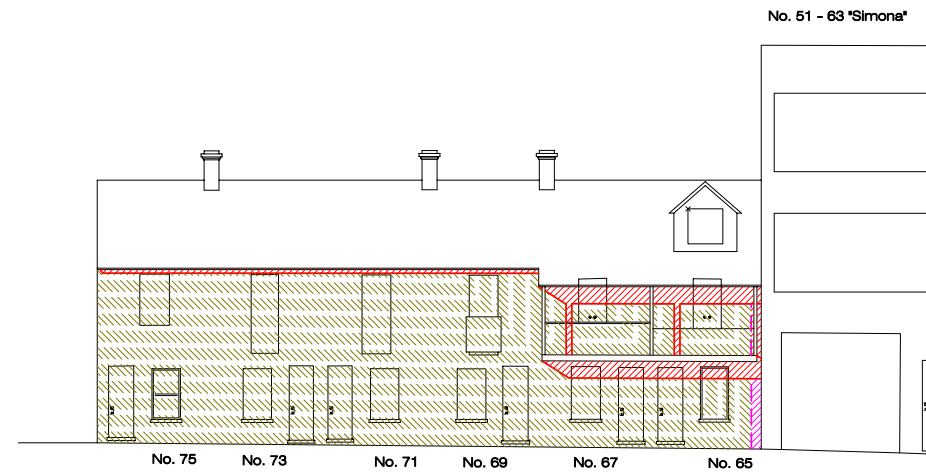
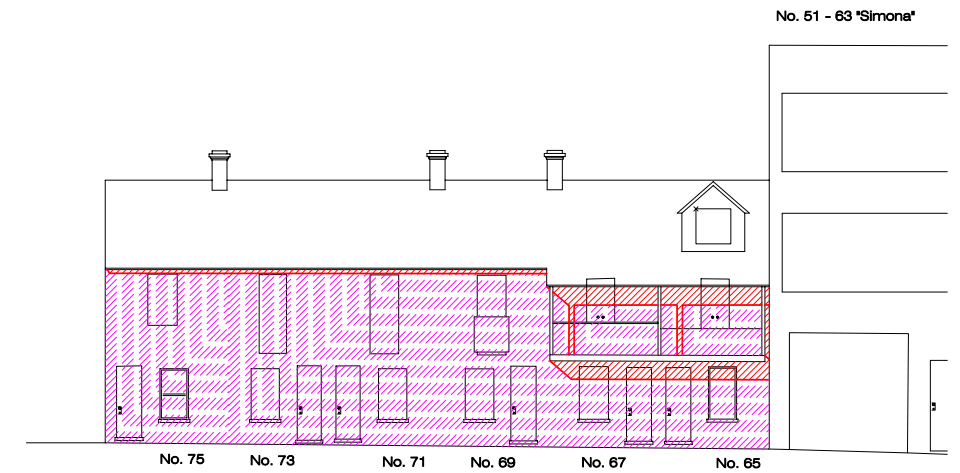


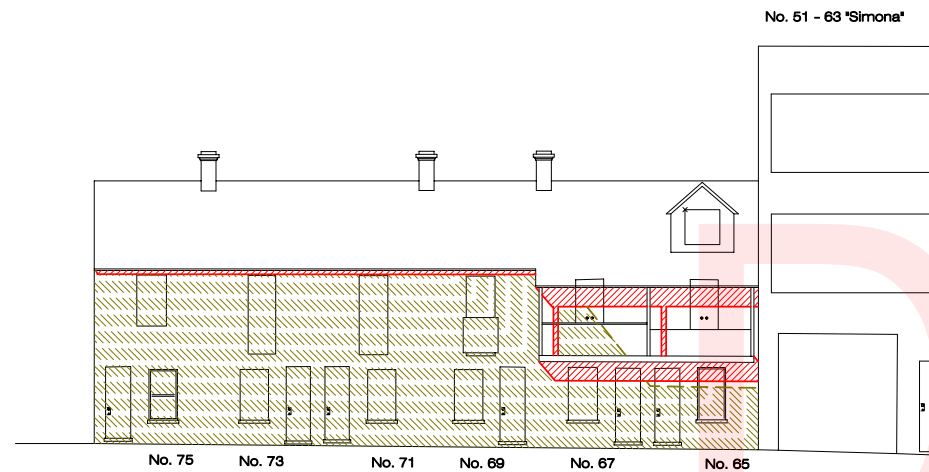
O'Connor Street  
June 21st - 9am E.S.T.



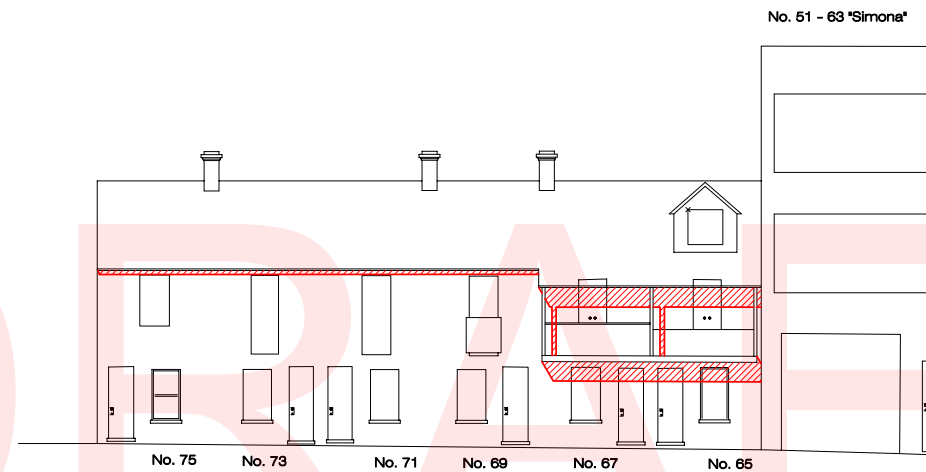
O'Connor Street  
June 21st - 9.30am E.S.T.



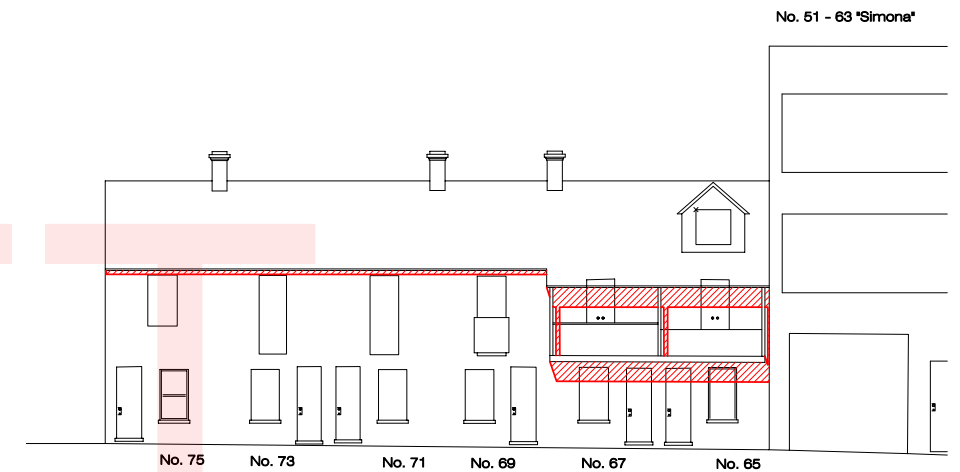
O'Connor Street  
June 21st - 10am E.S.T.



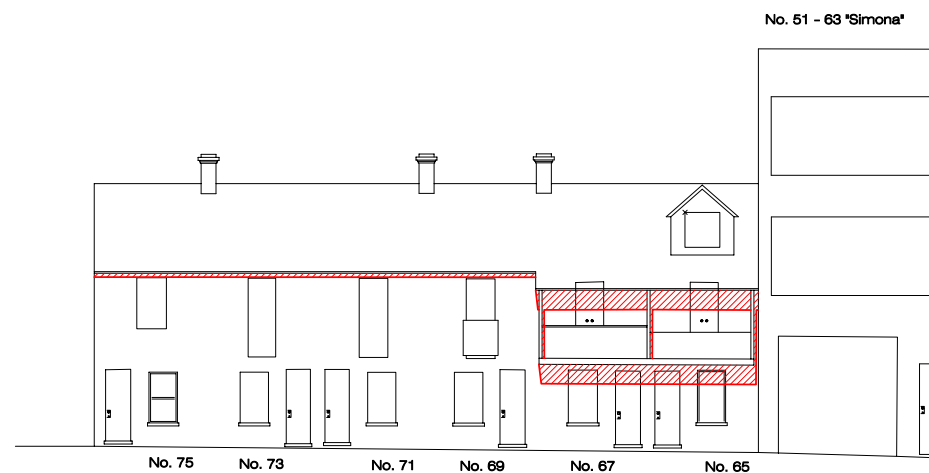
O'Connor Street  
June 21st - 10.30am E.S.T.



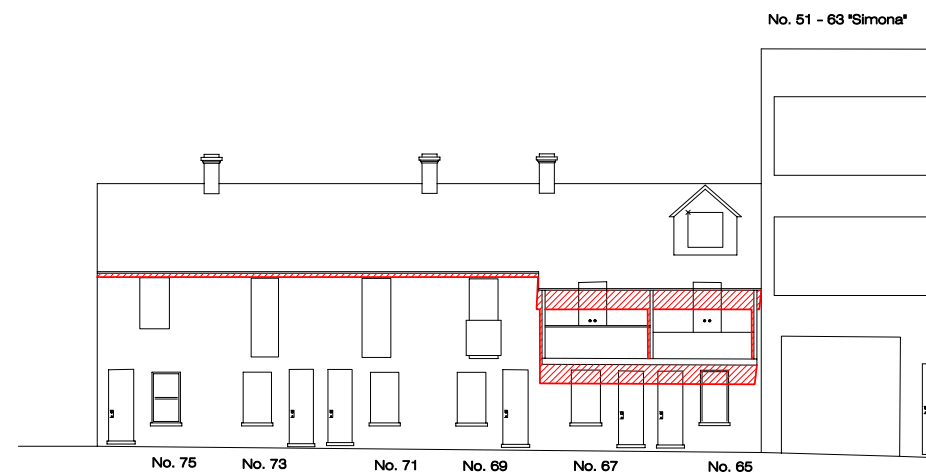
O'Connor Street  
June 21st - 11am E.S.T.



O'Connor Street  
June 21st - 11.30am E.S.T.



O'Connor Street  
June 21st - 12pm E.S.T.



O'Connor Street  
June 21st - 12.30pm E.S.T.

Legend

- Shadow line from existing buildings.
- Shadow from existing buildings.
- Shadow line from the approved development.
- Shadow from the approved development.
- Shadow line from the proposed development.
- Shadow from the proposed development.
- Nett additional sunlight.

NOTES:

- SHADOWS SHOWN ON THIS DRAWING HAVE BEEN DETERMINED USING A COMPLEX ALGORITHM THAT LOCATES THE SUN RELATIVE TO APPROXIMATE TRUE NORTH USING CORRECTIONS FOR LATITUDE, LONGITUDE, AND SOLAR TIME TO MEAN TIME (THE EQUATION OF TIME).
- DUE TO NATURAL PHENOMENA, THE PERCEIVED EDGE OF A SHADOW DIVERGES PROPORTIONALLY TO A SHADOWS LENGTH, IN REALITY THIS MEANS THE LONGER A SHADOW IS, THE EDGE IS RENDERED PROPORTIONALLY MORE FUZZY.
- WHILST SHADOW LINES SHOWN ON THIS DRAWING ARE INDICATED AS DISTINCT AND FINITE EDGES, THEY DO NOT TAKE INTO CONSIDERATION THIS CHARACTERISTIC AND HENCE THE TRUE POSITION OF THE SHADOWS EDGE WILL BE SLIGHTLY IMPROVED.
- ALL SHADOWS ON THIS PLAN HAVE BEEN PREPARED USING ARCHITECTURAL, FIELD & AERIAL SURVEY INFORMATION PROVIDED BY FOSTER + PARTNERS, DEGOTARD SMITH & PARTNERS & AAMHATCH PTY LTD RESPECTIVELY. SHADOWS CAST FROM SOME MINOR BUILDINGS ARE INDICATIVE ONLY. ACCURATE SHADOWS OF THESE BUILDINGS IS SUBJECT TO ADDITIONAL SURVEY BEING MADE AVAILABLE.

**JM** computer modelling  
339 Eastern Valley Way, Castle Cove NSW 2069  
phone (02) 9417 0485 facsimile (02) 9417 0531

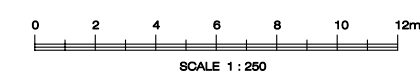
The information shown on this drawing is copyright and shall not be copied or reproduced in any form or used for any purpose other than originally intended without written approval from JM computer modelling

CLIENT

Fraser Greecliff Developments Pty Ltd  
Level 11, 488 Kent St  
Sydney, NSW 2000

PROJECT

Fraser's Broadway  
20 - 102 Broadway Sydney, NSW 2000  
Chippendale



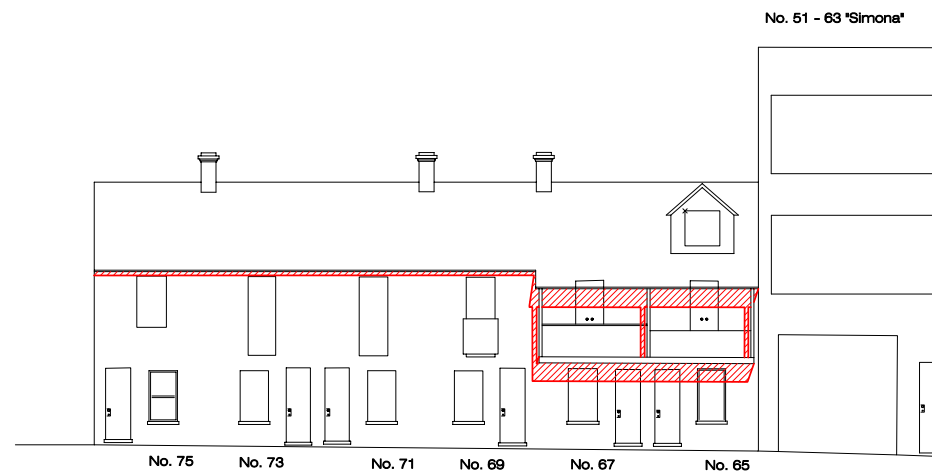
TITLE

Elevational Shadow Diagram  
on the Northern Facades of Part of  
O'Connor Street, Chippendale

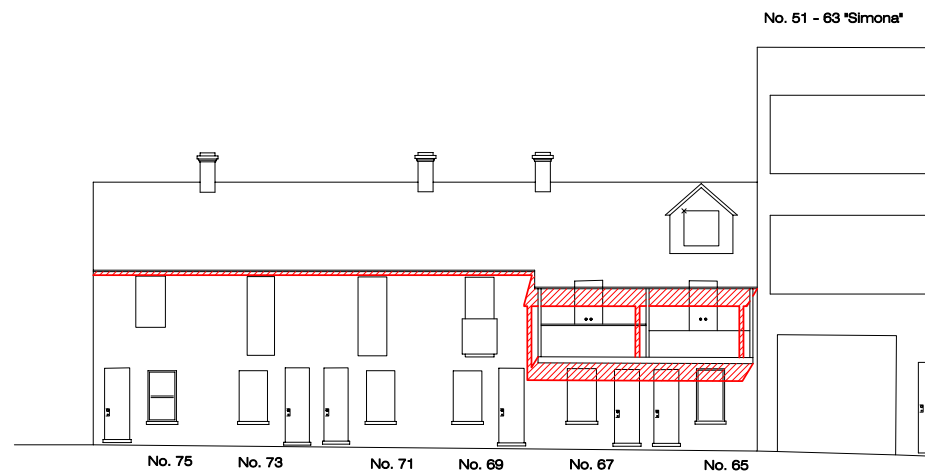
DATE  
May 2008

JOB NO.  
0805

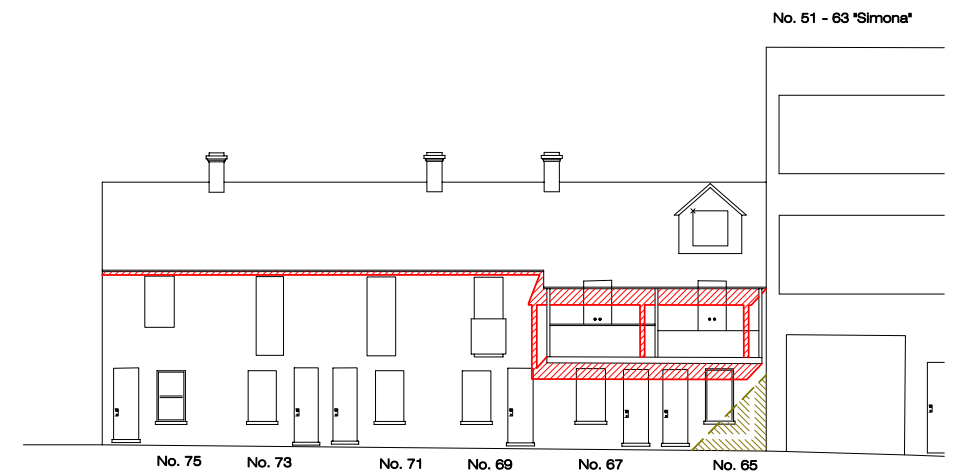
REV.



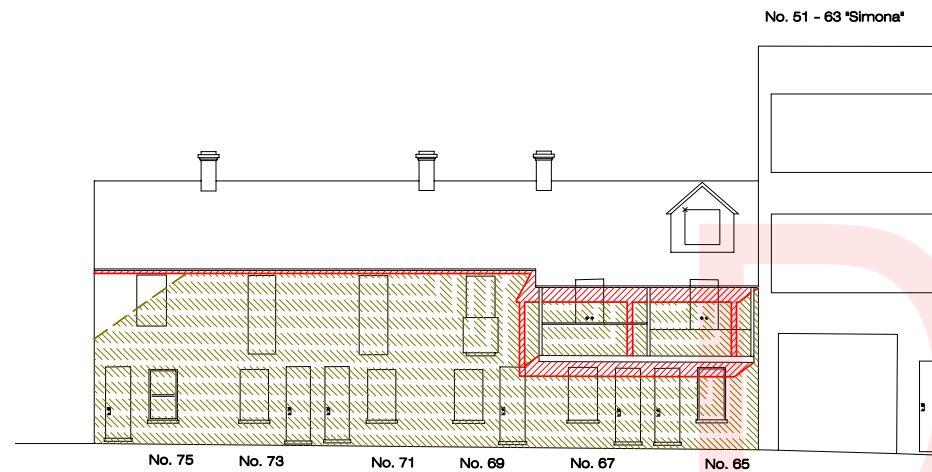
O'Connor Street  
June 21st - 1pm E.S.T.



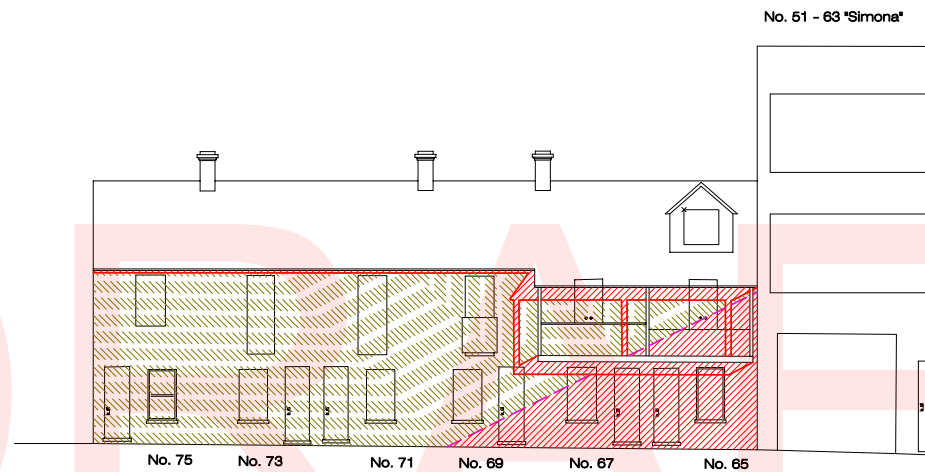
O'Connor Street  
June 21st - 1.30pm E.S.T.



O'Connor Street  
June 21st - 2pm E.S.T.



O'Connor Street  
June 21st - 2.30pm E.S.T.



O'Connor Street  
June 21st - 3pm E.S.T.

#### Legend

- Shadow line from existing buildings.
- Shadow from existing buildings.
- Shadow line from the approved development.
- Shadow from the approved development.
- Shadow line from the proposed development.
- Shadow from the proposed development.
- Nett additional sunlight.

#### NOTES:

- SHADOWS SHOWN ON THIS DRAWING HAVE BEEN DETERMINED USING A COMPLEX ALGORITHM THAT LOCATES THE SUN RELATIVE TO APPROXIMATE TRUE NORTH USING CORRECTIONS FOR LATITUDE, LONGITUDE, AND SOLAR TIME TO MEAN TIME (THE EQUATION OF TIME).
- DUE TO NATURAL PHENOMENA, THE PERCEIVED EDGE OF A SHADOW DIVERGES PROPORTIONALLY TO A SHADOWS LENGTH, IN REALITY THIS MEANS THE LONGER A SHADOW IS, THE EDGE IS RENDERED PROPORTIONALLY MORE FUZZY.
- WHILST SHADOW LINES SHOWN ON THIS DRAWING ARE INDICATED AS DISTINCT AND FINITE EDGES, THEY DO NOT TAKE INTO CONSIDERATION THIS CHARACTERISTIC AND HENCE THE TRUE POSITION OF THE SHADOWS EDGE WILL BE SLIGHTLY IMPROVED.
- ALL SHADOWS ON THIS PLAN HAVE BEEN PREPARED USING ARCHITECTURAL, FIELD & AERIAL SURVEY INFORMATION PROVIDED BY FOSTER + PARTNERS, DEGOTARD SMITH & PARTNERS & AAMHATCH PTY LTD RESPECTIVELY. SHADOWS CAST FROM SOME MINOR BUILDINGS ARE INDICATIVE ONLY. ACCURATE SHADOWS OF THESE BUILDINGS IS SUBJECT TO ADDITIONAL SURVEY BEING MADE AVAILABLE.

**JM** computer modelling  
339 Eastern Valley Way, Castle Cove NSW 2069  
phone (02) 9417 0485 facsimile (02) 9417 0531

The information shown on this drawing is copyright and shall not be copied or reproduced in any form or used for any purpose other than originally intended without written approval from JM computer modelling

#### CLIENT

Fraser Greecliff Developments Pty Ltd  
Level 11, 488 Kent St  
Sydney, NSW 2000

#### PROJECT

Fraser's Broadway  
20 - 102 Broadway Sydney, NSW 2000  
Chippendale



#### TITLE

Elevational Shadow Diagram  
on the Northern Facades of Part of  
O'Connor Street, Chippendale

DATE  
May 2008

JOB NO.  
0805

REV.