

PROJECT SITE AREAS:

site 1 - 198 acres / 80 hectares
(800m x 1000m)
site 2 - 37 acres / 15 hectares
(500m x 300m)
Total: 235 acres / 95 hectares

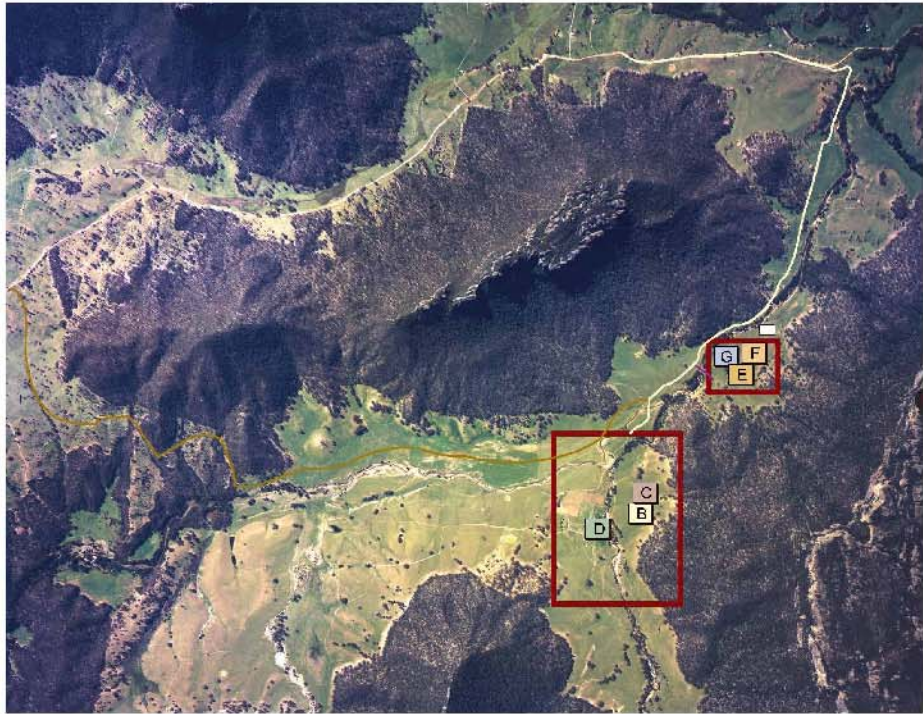
Buildings	m2
A Villas	4530
B Main Building	2922
C Conf. Centre	946
D Spa	1006
E Manager's Accom.	1043
F Staff Accom.	2183
G Maintenance	913
H Housekeeping Units	45

* LOCATIONS FOR BUILDINGS DO NOT REPRESENT ACTUAL FOOTPRINTS

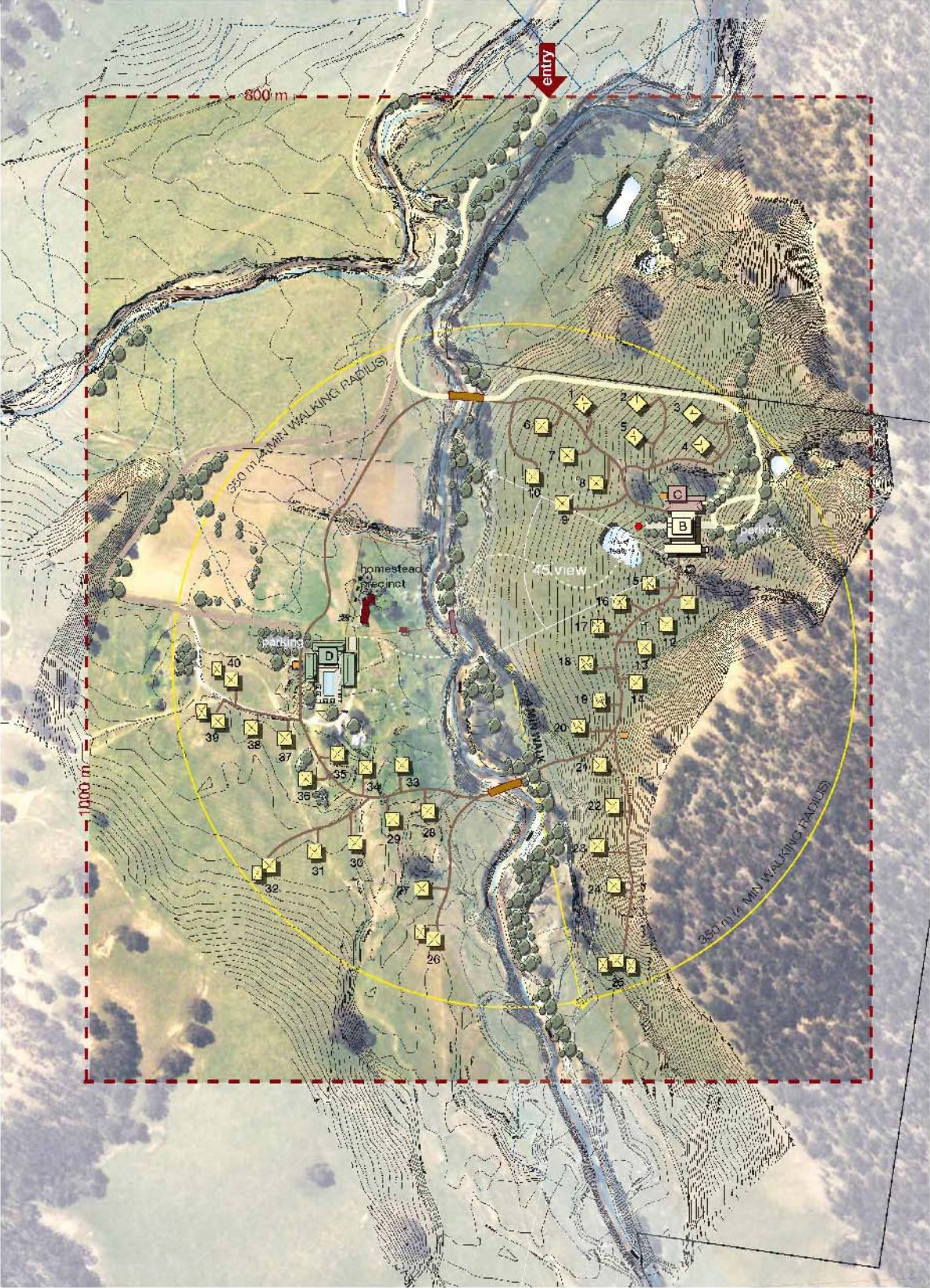
LEGEND	
	project site boundary
	standard villa
	royal villa
	owners villa
	housekeeping unit
	pedestrian / buggy path
	guest entry road
	service road
	helicopter pad
	sewer treatment plant
	vehicular/buggy crossing
	solar panel field
	emergency access road to be determined
	fire trail
	main view from villas
	50-100 m bushfire setback
	50 m riparian corridor



2 - STAFF AND MANAGERS' ACCOMODATION AND MAINTENANCE FACILITIES SITE



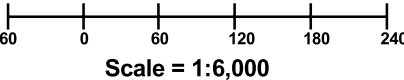
AERIAL KEY PLAN scale: 1:20000 @ A1



1- RESORT SITE



RMB 3411 Dog Trap Rd
Somersby NSW 2250
Tel: 612 43622112 / 612 43621184
Fax: 612 43622204 Mob: 0427 622204
Email: abpp@bigpond.net.au



Job No. : B05157	Drawing No. F2
Drawn By : BS	Date : 08-08-05
Amendment	Date :
A General	27-09-05
B	
C	

Figure 2
Concept Master Plan
Emirates Luxury Resort - Wolgan Valley

Source: Maste Plan supplied by Conybeare Morrison Internation Pty. Ltd. (August 2005)