

CONCEPT PLAN

UNIVERSITY OF
TECHNOLOGY SYDNEY
BROADWAY PRECINCT

LANDSCAPE REPORT



Deverson + Associates Pty Ltd
Landscape Architects
March 2009

INTRODUCTION

This Landscape Report is submitted to the Minister for Planning pursuant to Part 3A of the *Environmental Planning and Assessment Act 1979*. This is to fulfil the Environmental Assessment Requirements issued by the Director-General for the preparation of an Environmental Assessment of a Concept Plan for the Broadway Precinct of the City Campus of the University of Technology, Sydney.

PROPOSALS

- The campus landscape concept responds to its urban context and gateway location with high quality site landscaping and public domain.
- The Alumni Green provides the campus with a green heart for amenity, casual recreation and biodiversity. It is comprised of three distinct functional and character spaces:
 - ‘The Common’ between Building 2 and the Thomas Street building consists of lawn areas with deciduous shade trees defined by paved access ways edged with seat walls.
 - ‘The Square’ is a formal paved space with deciduous shade trees, furnishings and sculptures connecting Building 1 with Thomas Street.
 - ‘The Forest’ is a pocket of urban rainforest adjoining Building 4. It is constructed with walls and pavements through mounded areas planted with local rainforest species.
- The Public Domain is comprised of several streetscapes that define the site. The pavements, street trees and furnishings will be designed to coordinate with Council streetscape guidelines. The site’s Broadway streetscape forms part of a significant city gateway and will also complement the Frasers Broadway development.
- Sustainable design principles will be implemented in the landscape design development process, including water wise plant selection and water management.
- Plant selection will also consider the technical requirements of plants in adapting to podium areas and other micro climatic features of the campus site.
- Softscape character will respond to the urban context and functions of the outdoor spaces and include a diversity of species including native and cultural plantings.
- Final species selection will be determined during the detail design phase. Indicative species are illustrated in the concept plans and described as follows.

Blueberry Ash Botanical name: Elaeocarpus grandis Australian native. Fast growing rainforest tree with racemes of white bell shaped flowers in summer followed by large blue fruit. Spent leaves have many shades of orange. Height: 10m Width: 3m	Brushbox Botanical name: Lophostemon confertus Australian native. Tall evergreen bushy shade tree. Feathery white flowers in summer. Originates from rainforest and coastal areas. Commonly used as street trees. Height: 30m Width: 8m
Cabbage Palm Botanical name: Livistona australis Australian native. A palm with large fan shaped leaves. Dense sprays of cream flowers in spring followed by inconspicuous black fruit. Tolerates shady and moist conditions. Height: 20-30m	Jacaranda Botanical name: Jacaranda mimosaeifolia Exotic (Brazil) Deciduous to semi-evergreen medium size tree. Foliage is fine and fern like. Tubular or trumpet shaped, lavender blue flowers in spring. Fruit is flat, disc-like which contains numerous papery winged seeds. In arid regions the tree blooms very profusely. It is a drought resistant tree. Height: 10m Width: 12m
Lilly Pilly Botanical name: Acmena smithii Australian native. Tall upright rainforest tree. Bunches of white flowers followed by purple berries. Colourful flushes of new growth most of the year. Height: 30m Width: 8m	Maidenhair Tree Botanical name: Gingko biloba Exotic (China) A long-lived, narrow upright deciduous tree. The light green leaves are fan shaped and two-lobed, turning clear yellow in autumn. Resistant to pests. Pollution tolerant. Tolerates most soil types. Casts light shade. Height: 11m Width: 5m
Pittosporum Botanical name: Pittosporum revolutum Australian native. Large rounded shrub with bright green leaves with a felty underside. Fragrant yellow flowers in spring. Sticky red seed in a woody capsule. Bird attractor. Height: 3m Width: 2m	Plane Tree Botanical name: Platanus x acerifolia Exotic (hybrid) A large, rounded canopy, deciduous tree commonly planted in Australian streets and public landscapes. Leaves matt, mid to dark green turning yellow to brown in autumn. Bark olive-green to cream, flaky, striking in the winter. Height 36m Width 10m
Red Cedar Botanical name: Toona ciliate (prev. australis) Australian native. Fast growing tree which is deciduous in spring. Sprays of white fragrant flowers followed by brown seed capsules. New leaves are a rusty colour. Height: 10m Width: 3m	Tree Fern Botanical name: Cyathea australis Australian native. Tree Fern from coastal and rainforest gullies. Scales at the bottom of leaf stalks are shiny, red-brown and often twisted. Tolerates shady and moist conditions. Height: 2.5-6m Trunk Width: 16-40cm
Tuckeroo Botanical name: Cupaniopsis anacardioides Australian native. Coastal rainforest tree. Shade tree with greenish/white scented flowers followed by showy bright orange fruit. Dark green leathery leaves. Height: 10m Width: 3m	Yunnan Poplar Botanical name: Populus alba “pyramidalis” Exotic (China) Attractive, fast-growing conical upright deciduous tree. Greyish white bark. Leaves turn gold in autumn. Undersides are covered with white downy hairs. Drought, salt and pollution tolerant. Height: 24m Width: 4-5m



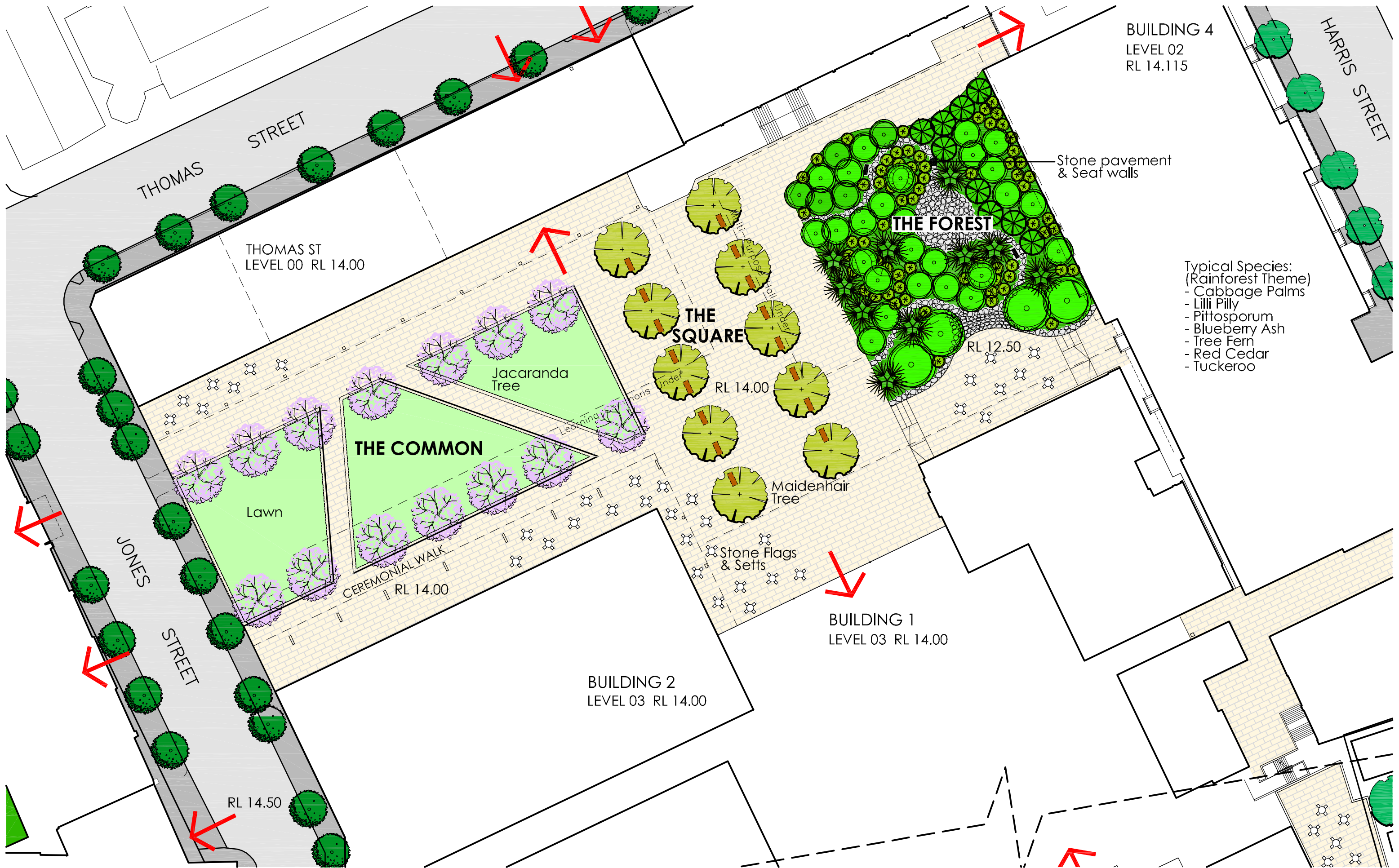
NOTE:
REFER TO SHEET 2
FOR ALUMNI GREEN

PUBLIC DOMAIN
INFILL STREET TREE PLANTINGS
TO COUNCIL MASTERPLAN

*HARDSCAPE MATERIALS &
FURNISHINGS TO COUNCILS
DRAFT STREETS DESIGN CODE

*PUBLIC DOMAIN FOOTPATH PAVEMENTS	
BROADWAY:	GRANITE FLAGSTONE - AUSTRAL BLACK TREE PITS: GRANITE SETTS WITH STABILISED AGGREGATE INFILL
HARRIS ST:	ASPHALT PAVING TREE PITS: STONE SETTS WITH STABILISED AGGREGATE INFILL
THOMAS ST: WATTLE ST JONES ST	ASPHALT PAVING TREE PITS: DECOMPOSED GRANITE

**UTS BROADWAY PRECINCT
CONCEPT PLAN
LANDSCAPE - MASTER PLAN**
Sheet 1 of 5
Date March 2009 Scale 1:1000 A3
Issue D 22.04.09 Drg. No. 1241-1



BUILDING 4
LEVEL 02
RL 14.115

THOMAS ST
LEVEL 00 RL 14.00

Stone pavement
& Seat walls

- Typical Species:
(Rainforest Theme)
- Cabbage Palms
 - Lilli Pilly
 - Pittosporum
 - Blueberry Ash
 - Tree Fern
 - Red Cedar
 - Tuckeroo

THE COMMON

THE SQUARE

THE FOREST

Jacaranda Tree

Maidenhair Tree

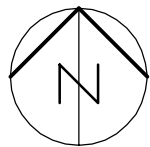
Stone Flags
& Setts

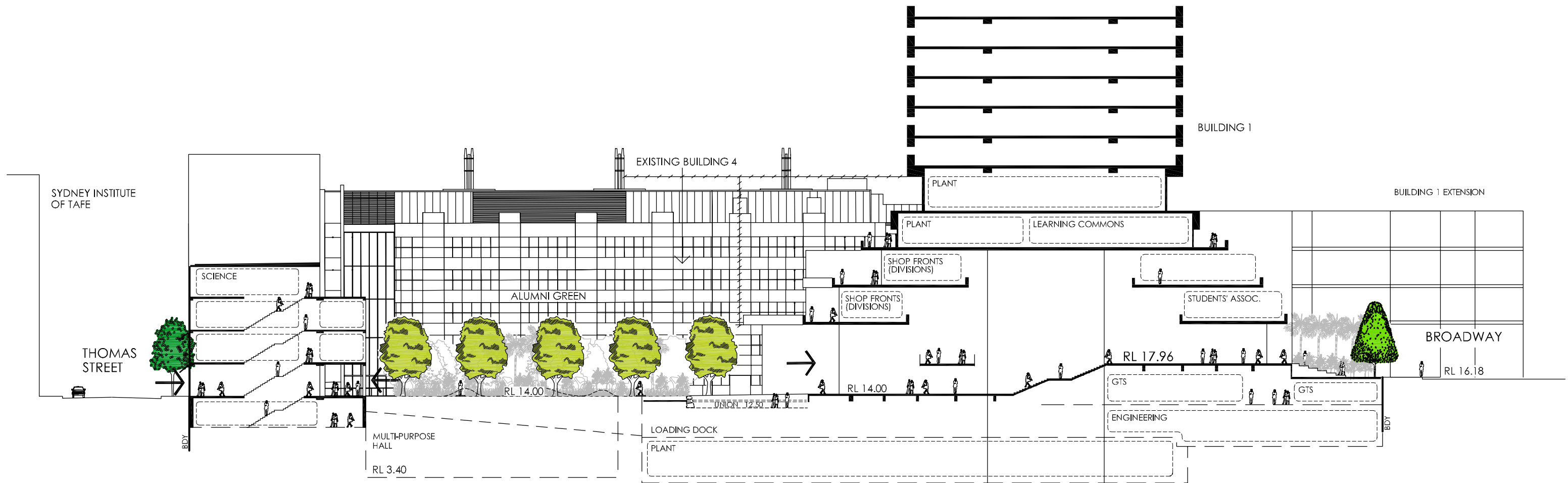
BUILDING 1
LEVEL 03 RL 14.00

BUILDING 2
LEVEL 03 RL 14.00

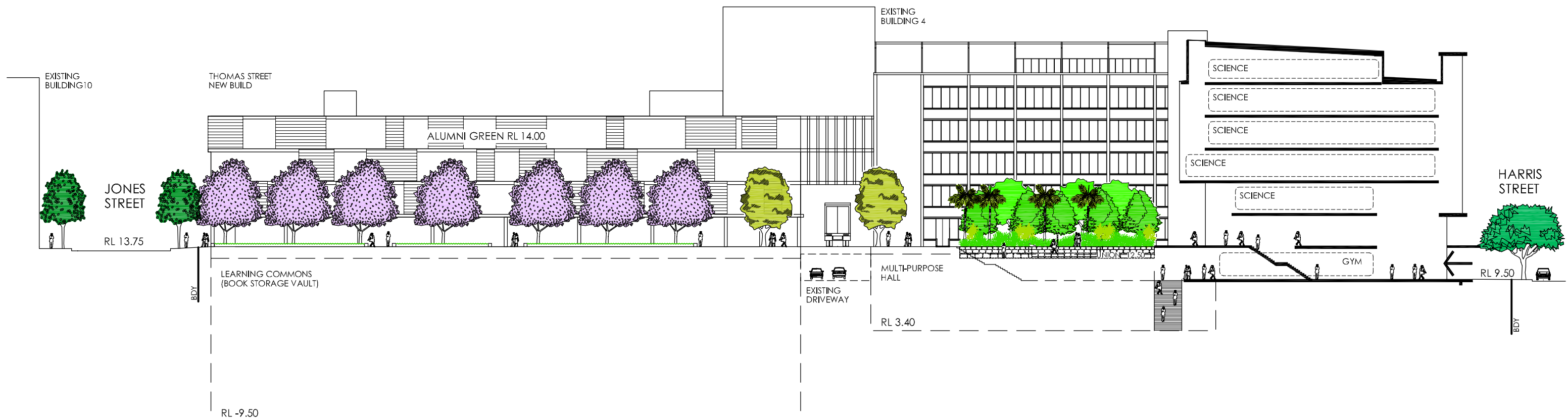
CEREMONIAL WALK
RL 14.00

RL 14.50





SECTION A-A (North-South) 1:500 A3



SECTION B-B (East-West) 1:500 A3



Deverson + Associates Pty Ltd
Landscape Architects

UTS BROADWAY PRECINCT CONCEPT PLAN LANDSCAPE - TYPICAL SECTIONS

Sheet 3 of 5

Date March 2009

Issue B

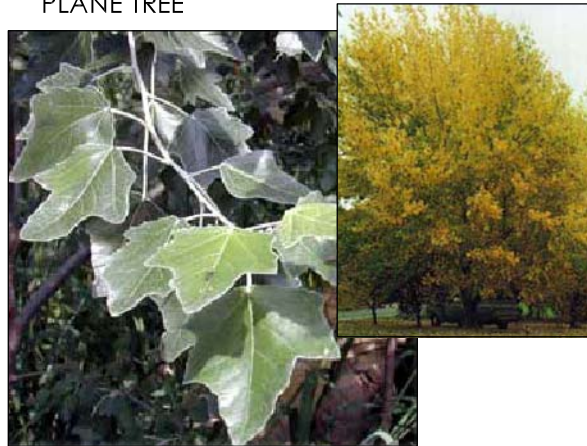
Scale 1:500 A3

Drg. No. 1241-3

PUBLIC DOMAIN



PLANE TREE



YUNNAN POPLAR



BRUSHBOX

ALUMNI GREEN



TREE FERN



LILLY PILLY

PITTOSPORUM
REVOLUTUM



TUCKEROO



BLUEBERRY ASH



RED CEDAR



CABBAGE PALMS

THE FOREST



MAIDENHAIR TREE



JACARANDA



UTS BROADWAY PRECINCT CONCEPT PLAN LANDSCAPE - INDICATIVE PLANT PALETTE

Sheet 4 of 5

Date March 2009

Issue B

Scale nts

Drg. No. 1241-4



Deverson + Associates Pty Ltd
Landscape Architects



THOMAS STREET
Retain Brush Box and
Eucalypt

SITE TREES
Remove Trees for future
Buildings (Eucalypt,
Casuarina, Palm, Celtis,
Plane Typical)

HARRIS STREET
Retain Plane Trees and
Paperbarks

JONES STREET
Retain Existing Trees
(Poplar, Eucalypt)



SITE TREES
Retain Plane Tree

WATTLE STREET
Retain Existing Brushbox

BROADWAY
Retain Plane Trees

Note:
Trees over Existing
Basement

LEGEND

-  EXISTING TREES TO BE RETAINED
-  EXISTING TREES TO BE REMOVED



Deverson + Associates Pty Ltd
Landscape Architects

UTS BROADWAY PRECINCT
CONCEPT PLAN
LANDSCAPE - EXISTING VEGETATION
Sheet 5 of 5

Date March 2009 Scale 1:1000 A3
Issue C 22.04.09 Drg. No. 1241-5