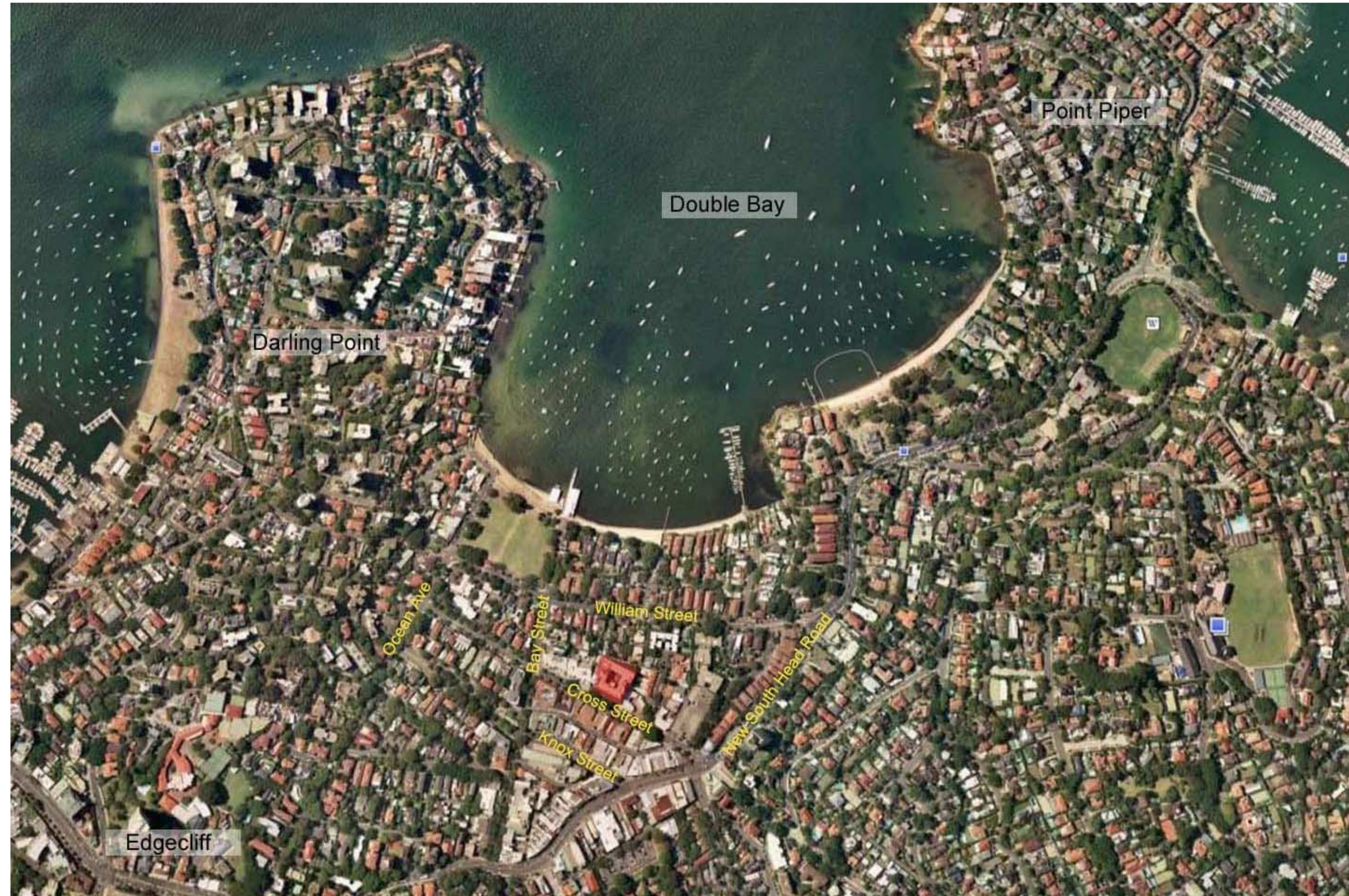


Do not scale drawings. Verify all dimensions on site

issue	amendment	date
-	ISSUE FOR QA REVIEW	02.02.09
A	ISSUE FOR ENVIRONMENTAL ASSESSMENT	20.02.09



DA00-00	COVER SHEET & DRAWING LIST	A
DA00-01	SITE ANALYSIS	A
DA00-03	SITE PLAN	C
DA00-11	DEMOLITION LOWER BASEMENT PLAN	A
DA00-12	DEMOLITION UPPER BASEMENT PLAN	A
DA00-13	DEMOLITION GROUND FLOOR PLAN	A
DA01-20	ELEVATED PERSPECTIVE VIEW	A
DA01-21	HOTEL ENTRY PERSPECTIVE VIEW	A
DA01-22	PIAZZA ENTRY PERSPECTIVE VIEW	A
DA01-23	PIAZZA PERSPECTIVE VIEW 1	A
DA01-24	PIAZZA PERSPECTIVE VIEW 2	A
DA02-01	LOWER BASEMENT FLOOR PLAN	I
DA02-02	UPPER BASEMENT FLOOR PLAN	I
DA02-03	GROUND FLOOR PLAN	D
DA02-04	LEVEL 1 FLOOR PLAN	F
DA02-05	LEVEL 2 FLOOR PLAN	F
DA02-06	LEVEL 3 FLOOR PLAN	G
DA02-07	LEVEL 4 FLOOR PLAN	G
DA02-08	LEVEL 5 FLOOR PLAN	F
DA02-09	LEVEL 6 - 12 FLOOR PLAN	F
DA02-10	LEVEL 13 FLOOR PLAN	D
DA02-11	LEVEL 14 FLOOR PLAN (PLANT / ROOF TERRACE)	D
DA02-12	ROOF PLAN	D
DA03-01	NORTH ELEVATION	B
DA03-02	SOUTH ELEVATION	B
DA03-03	EAST ELEVATION	B
DA03-04	WEST ELEVATION	B
DA03-11	SECTION A-A	D
DA03-12	SECTION B-B	D
DA03-13	SECTION C-C	D
DA03-14	SECTION D-D	D
DA03-21	DETAIL SECTION 1-1	A
DA03-22	DETAIL SECTION 2-2	A
DA03-23	DETAIL SECTION 3-3	A
DA03-24	DETAIL SECTION 4-4	A
DA03-25	DETAIL SECTION 5-5	A
DA03-26	DETAIL SECTION 6-6	A
DA03-27	DETAIL SECTION 7-7	A
DA04-01	SUBSTATION DETAILS	B
DA04-60	TYPICAL ADAPTABLE APARTMENTS 1	B
DA04-61	TYPICAL ADAPTABLE APARTMENTS 2	B
DA04-62	TYPICAL ADAPTABLE APARTMENTS 3	B
DA13-10	GROSS FLOOR AREA (Woolhara LEP)	C
DA13-11	GROSS FLOOR AREA (Woolhara LEP)	C
DA14-01	SHADOWS - 21ST JUNE 9am	A
DA14-02	SHADOWS - 21ST JUNE 12pm	A
DA14-03	SHADOWS - 21ST JUNE 1pm	A
DA14-04	SHADOWS - 21ST JUNE 2pm	A
DA14-05	SHADOWS - 21ST JUNE 3pm	A
DA14-11	SHADOWS - 21ST SEPTEMBER 9am	A
DA14-12	SHADOWS - 21ST SEPTEMBER 12pm	A
DA14-13	SHADOWS - 21ST SEPTEMBER 1pm	A
DA14-14	SHADOWS - 21ST SEPTEMBER 2pm	A
DA14-15	SHADOWS - 21ST SEPTEMBER 3pm	A
DA14-21	SHADOWS - 21ST DECEMBER 9am	A
DA14-22	SHADOWS - 21ST DECEMBER 12pm	A
DA14-23	SHADOWS - 21ST DECEMBER 1pm	A
DA14-24	SHADOWS - 21ST DECEMBER 2pm	A
DA14-25	SHADOWS - 21ST DECEMBER 3pm	A
DA14-31	SHADOWS - 21ST MARCH 9am	A
DA14-32	SHADOWS - 21ST MARCH 12pm	A
DA14-33	SHADOWS - 21ST MARCH 1pm	A
DA14-34	SHADOWS - 21ST MARCH 2pm	A
DA14-35	SHADOWS - 21ST MARCH 3pm	A
DA15-00	VISUAL ASSESSMENT KEY PLAN	A
DA15-01	VISUAL ASSESSMENT 1	A
DA15-02	VISUAL ASSESSMENT 2	A
DA15-03	VISUAL ASSESSMENT 3	A
DA15-04	VISUAL ASSESSMENT 4	A
DA15-05	VISUAL ASSESSMENT 5	A
DA15-06	VISUAL ASSESSMENT 6	A
DA15-07	VISUAL ASSESSMENT 7	A
DA15-08	VISUAL ASSESSMENT 8	A
DA15-09	VISUAL ASSESSMENT 09	A
DA15-10	VISUAL ASSESSMENT 10	A
DA15-11	VISUAL ASSESSMENT 11	A
DA15-12	VISUAL ASSESSMENT 12	A
DA15-13	VISUAL ASSESSMENT 13	A
DA15-14	VISUAL ASSESSMENT 14	A
DA15-15	VISUAL ASSESSMENT 15	A
DA16-01	EXTERNAL FINISHES	-



**Architectus Sydney**  
 Level 3 341 George Street  
 Sydney NSW 2000  
 T (61 2) 8222 8400  
 F (61 2) 8222 8600  
 sydney@architectus.com.au  
 ABN 11 088 489 448

**Sydney**  
 Melbourne  
 Auckland  
 Brisbane  
 Shanghai

project  
**33 CROSS STREET, DOUBLE BAY**

drawing  
**COVER SHEET & DRAWING LIST**

scale **NTS** drawing no.  
 drawn **AD/TF/DR/II** **DA00-00**  
 checked **CO** issue  
 project no **070068** **A**