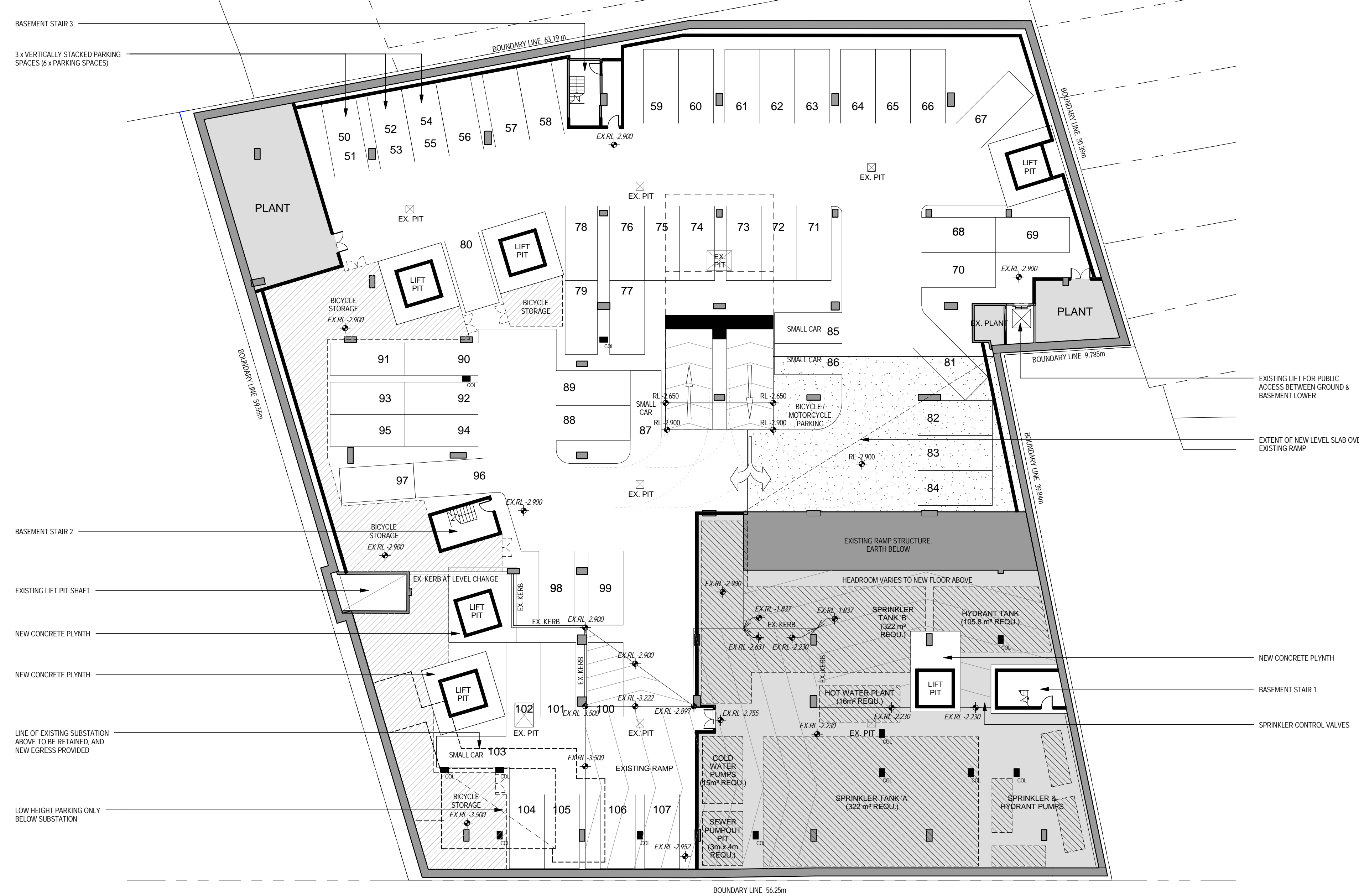


Do not scale drawings. Verify all dimensions on site

issue	amendment	date
-	PRELIMINARY ISSUE FOR DISCUSSION	01.12.08
A	PRELIMINARY ISSUE FOR INFORMATION	09.12.08
B	PRELIMINARY ISSUE FOR INFORMATION	15.12.08
C	PRELIMINARY ISSUE FOR INFORMATION	16.01.09
D	ISSUE FOR TRAFFIC CONSULTANTS	30.01.09
E	ISSUE FOR TRAFFIC CONSULTANTS	02.02.09
F	ISSUE FOR QA REVIEW	02.02.09
G	ISSUE FOR INFORMATION	10.02.09
H	AMENDMENT TO CARPARK SCHEDULE	11.02.09
I	ISSUE FOR ENVIRONMENTAL ASSESSMENT	20.02.09



LEGEND

	EXISTING STRUCTURE VERIFY ALL EXISTING CONDITIONS ON SITE
	NEW COLUMN TO ENGINEER'S DETAILS COL

CAR PARKING SUMMARY

Ex. Basement Lower		
STANDARD CARPARK BAY		54
SMALL CARPARK BAY		4
		58
Ex. Basement Upper		
STANDARD CARPARK BAY		37
SMALL CARPARK BAY		6
ACCESSIBLE CARPARK BAY	PRIVATE	2
ACCESSIBLE CARPARK BAY	PUBLIC	4
		49
TOTAL		107

project
33 CROSS STREET, DOUBLE BAY

drawing
LOWER BASEMENT FLOOR PLAN

scale	1:200 @ A1	drawing no.	
drawn	AD/TF/II/DR		DA02-01
checked	CO	issue	
project no	070068		