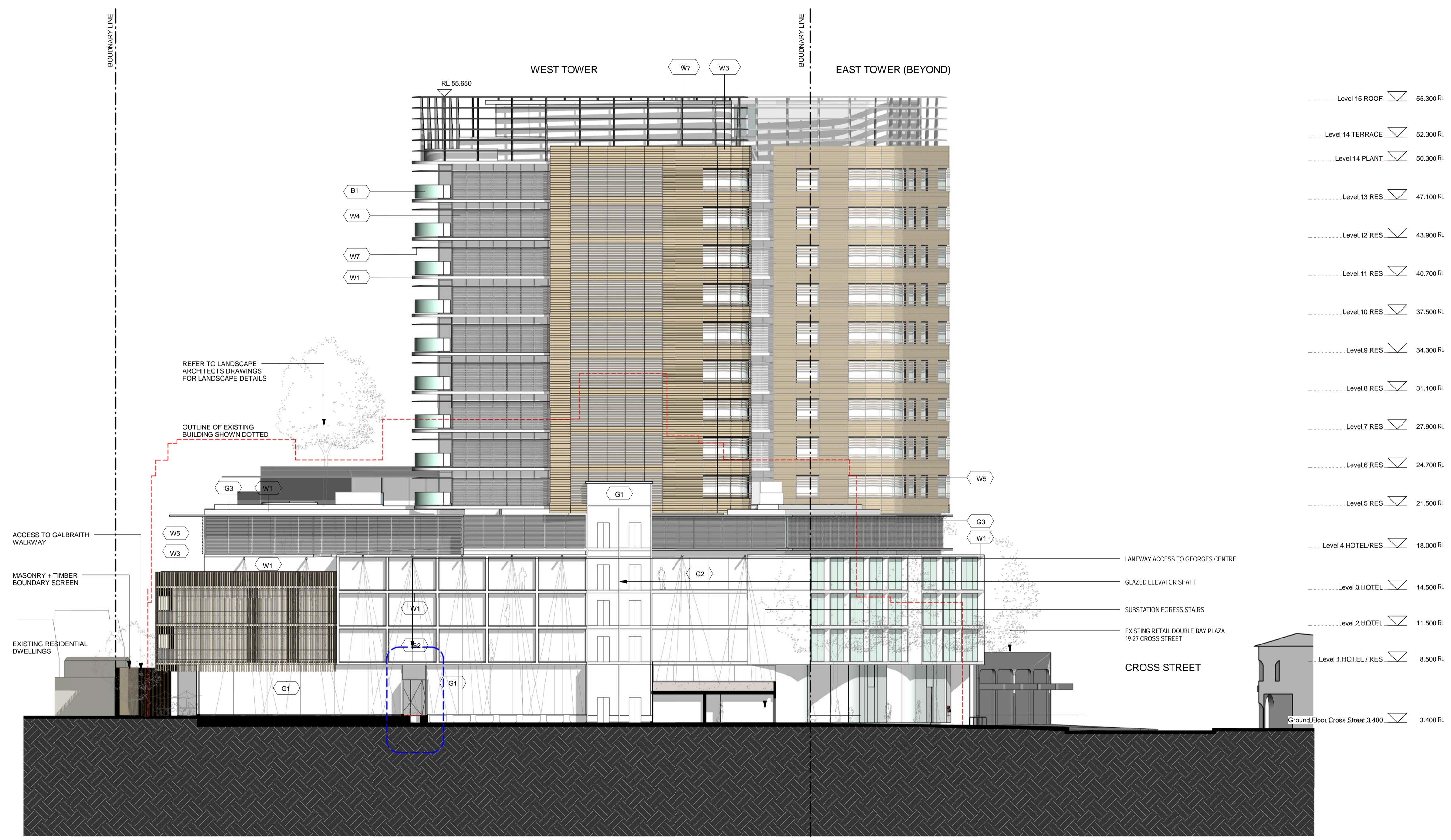


Do not scale drawings. Verify all dimensions on site

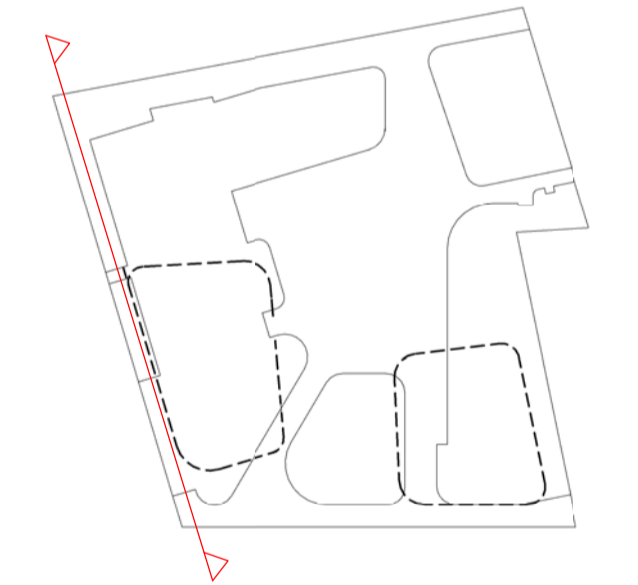
issue	amendment	date
-	ISSUE FOR QA REVIEW	02.02.09
A	ISSUE FOR INFORMATION	10.02.09
B	ISSUE FOR ENVIRONMENTAL ASSESSMENT	20.02.09



**MATERIAL + FINISHES LEGEND**

- W1 CONCRETE - LAZUR FINISH
- W2 ALUMINIUM METAL CLADDING
- W3 MODULAR TERRACOTTA FACADE / SCREEN SYSTEM
- W4 ALUMINIUM FACADE / SCREEN SYSTEM
- W5 ZINC CLADDING
- W6 STONE CLADDING
- W7 ALUMINIUM LIGHT SHELF
- G1 FRAMELESS GLAZING
- G2 ALUMINIUM FRAMED GLAZING SUITE
- G3 ALUMINIUM FRAMED GLAZING SUITE WITH EXTERNAL RETRACTABLE BLIND SYSTEM
- B1 FRAMELESS GLASS BALUSTRADE

**KEY PLAN**



1 West Elevation  
 Scale: 1:200

**architectus™**

Architectus Sydney  
 Level 3 341 George Street  
 Sydney NSW 2000  
 T (61 2) 8232 8400  
 F (61 2) 8232 8600  
 sydney@architectus.com.au  
 ABN 11 088 489 448

project  
 33 CROSS STREET, DOUBLE BAY

drawing  
 WEST ELEVATION

scale 1:200 @ A1 drawing no.  
 drawn AD/TF/II/DR DA03-04  
 checked CO issue  
 project no 070068 B