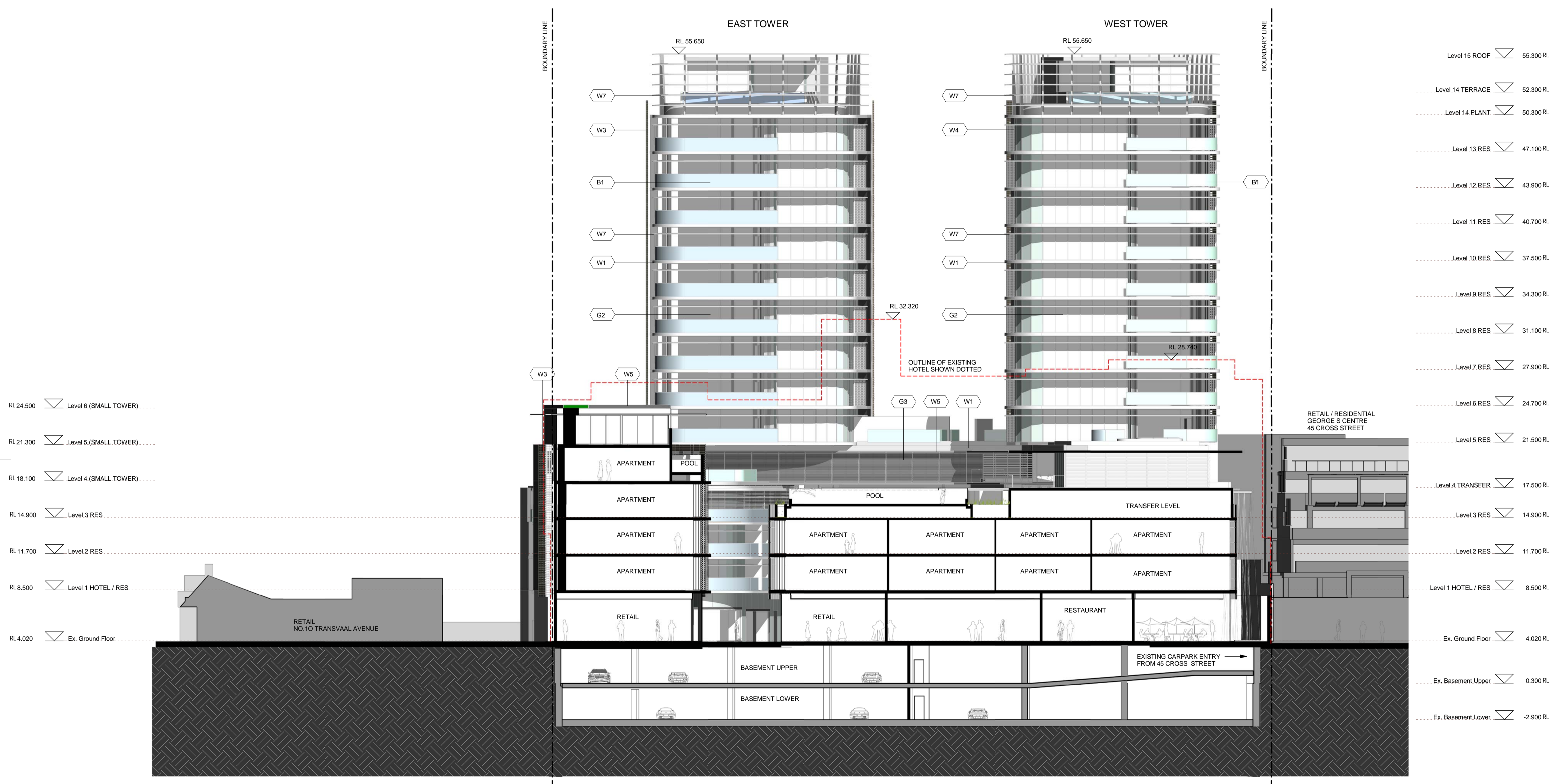


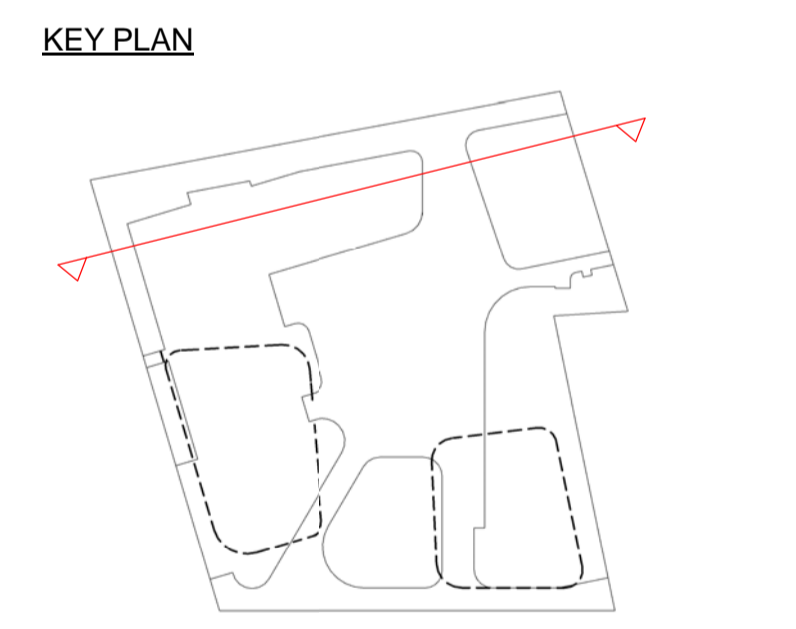
Do not scale drawings. Verify all dimensions on site

issue	amendment	date
A	PRELIMINARY ISSUE FOR INFORMATION	09.12.08
B	ISSUE FOR QA REVIEW	02.02.09
C	ISSUE FOR INFORMATION	10.02.09
D	ISSUE FOR ENVIRONMENTAL ASSESSMENT	20.02.09



MATERIAL + FINISHES LEGEND

W1	CONCRETE - LAZUR FINISH
W2	ALUMINIUM METAL CLADDING
W3	MODULAR TERRACOTTA FACADE / SCREEN SYSTEM
W4	ALUMINIUM FACADE / SCREEN SYSTEM
W5	ZINC CLADDING
W6	STONE CLADDING
W7	ALUMINIUM LIGHT SHELF
G1	FRAMELESS GLAZING
G2	ALUMINIUM FRAMED GLAZING SUITE
G3	ALUMINIUM FRAMED GLAZING SUITE WITH RETRACTABLE BLIND SYSTEM
B1	FRAMELESS GLASS BALUSTRADE



1 Section C-C
 Scale: 1 : 200

architectus™

Architectus Sydney
 Level 3 341 George Street
 Sydney NSW 2000
 T (61 2) 8232 8400
 F (61 2) 8232 8600
 sydney@architectus.com.au
 ABN 11 088 489 448

project
33 CROSS STREET, DOUBLE BAY

drawing
SECTION C-C

scale **1:200 @ A1** drawing no.
 drawn **AD/TF/II/DR** **DA03-13**
 checked **CO** issue
 project no **070068** **D**