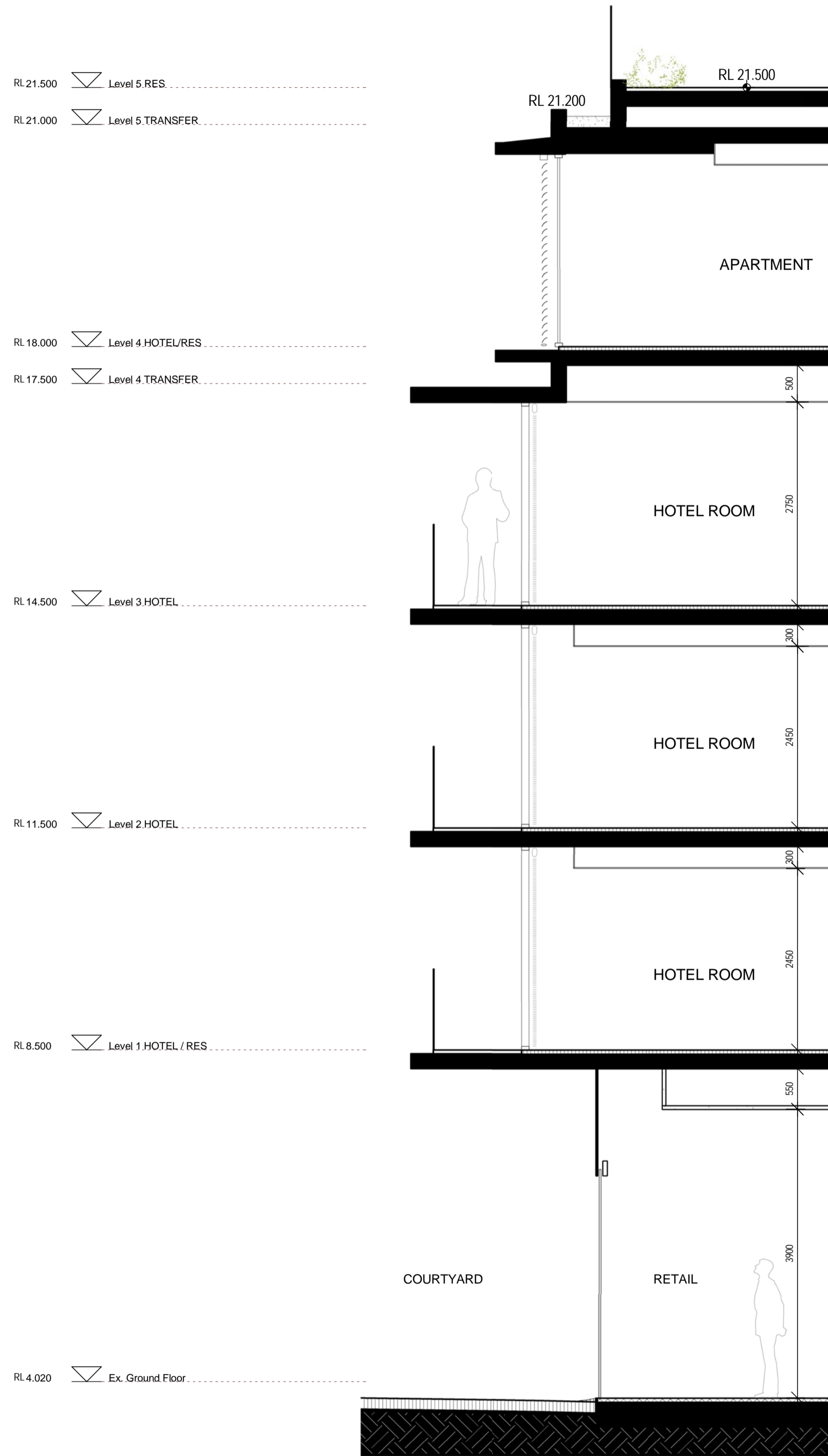
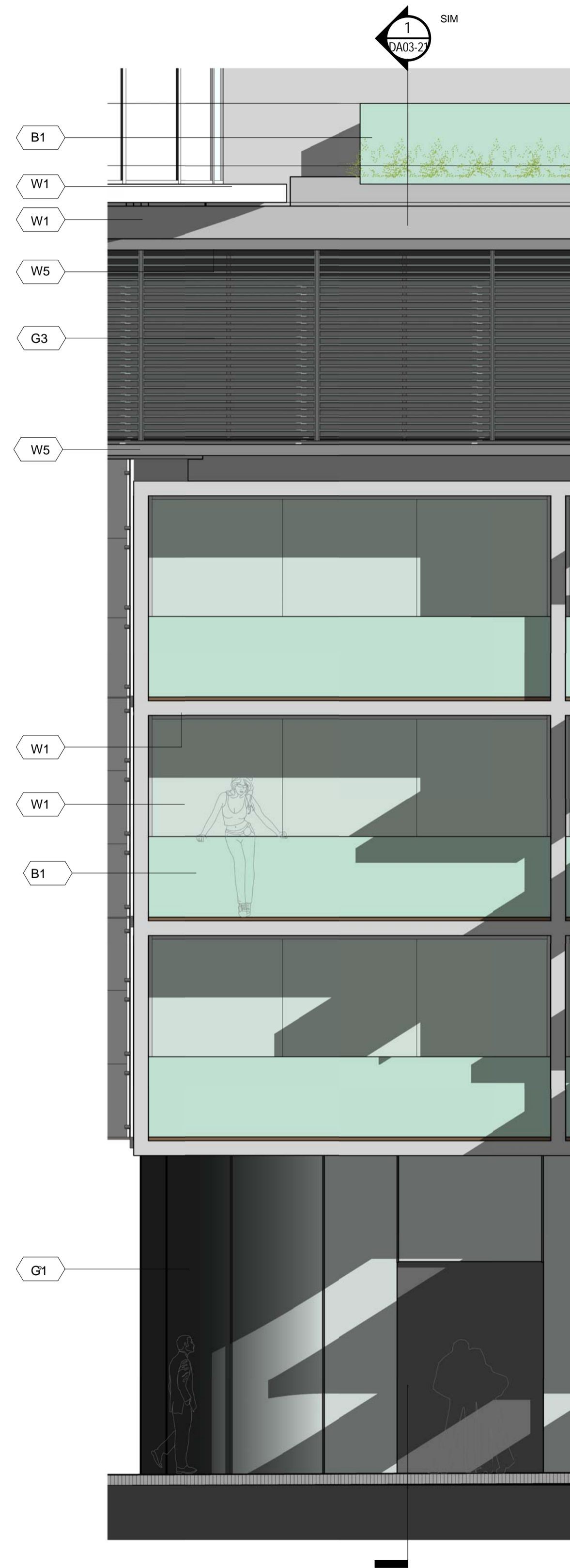


Do not scale drawings. Verify all dimensions on site

issue	amendment	date
-	ISSUE FOR QA REVIEW	02.02.09
A	ISSUE FOR ENVIRONMENTAL ASSESSMENT	20.02.09



1 DETAIL SECTION 1-1
 Scale: 1 : 50

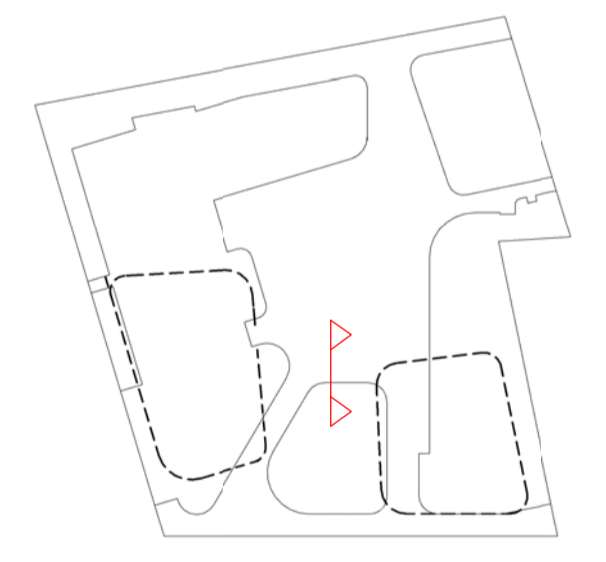


2 ELEVATION DETAIL 1-1
 Scale: 1 : 50

MATERIAL + FINISHES LEGEND

- W1 CONCRETE - LAZUR FINISH
- W2 ALUMINIUM METAL CLADDING
- W3 MODULAR TERRACOTTA FACADE / SCREEN SYSTEM
- W4 ALUMINIUM FACADE / SCREEN SYSTEM
- W5 ZINC CLADDING
- W6 STONE CLADDING
- W7 ALUMINIUM LIGHT SHELF
- G1 FRAMELESS GLAZING
- G2 ALUMINIUM FRAMED GLAZING SUITE
- G3 ALUMINIUM FRAMED GLAZING SUITE WITH EXTERNAL RETRACTABLE BLIND SYSTEM
- B1 FRAMELESS GLASS BALUSTRADE

KEY PLAN



architectus™

Architectus Sydney
 Level 3 341 George Street
 Sydney NSW 2000
 T (61 2) 8522 8400
 F (61 2) 8522 8600
 sydney@architectus.com.au
 ABN 11 088 489 448

project
33 CROSS STREET, DOUBLE BAY

drawing no.
DETAIL SECTION 1-1

scale 1:50 @ A1 drawing no. **DA03-21**
 drawn II/AD
 checked CO issue
 project no 070068 **A**