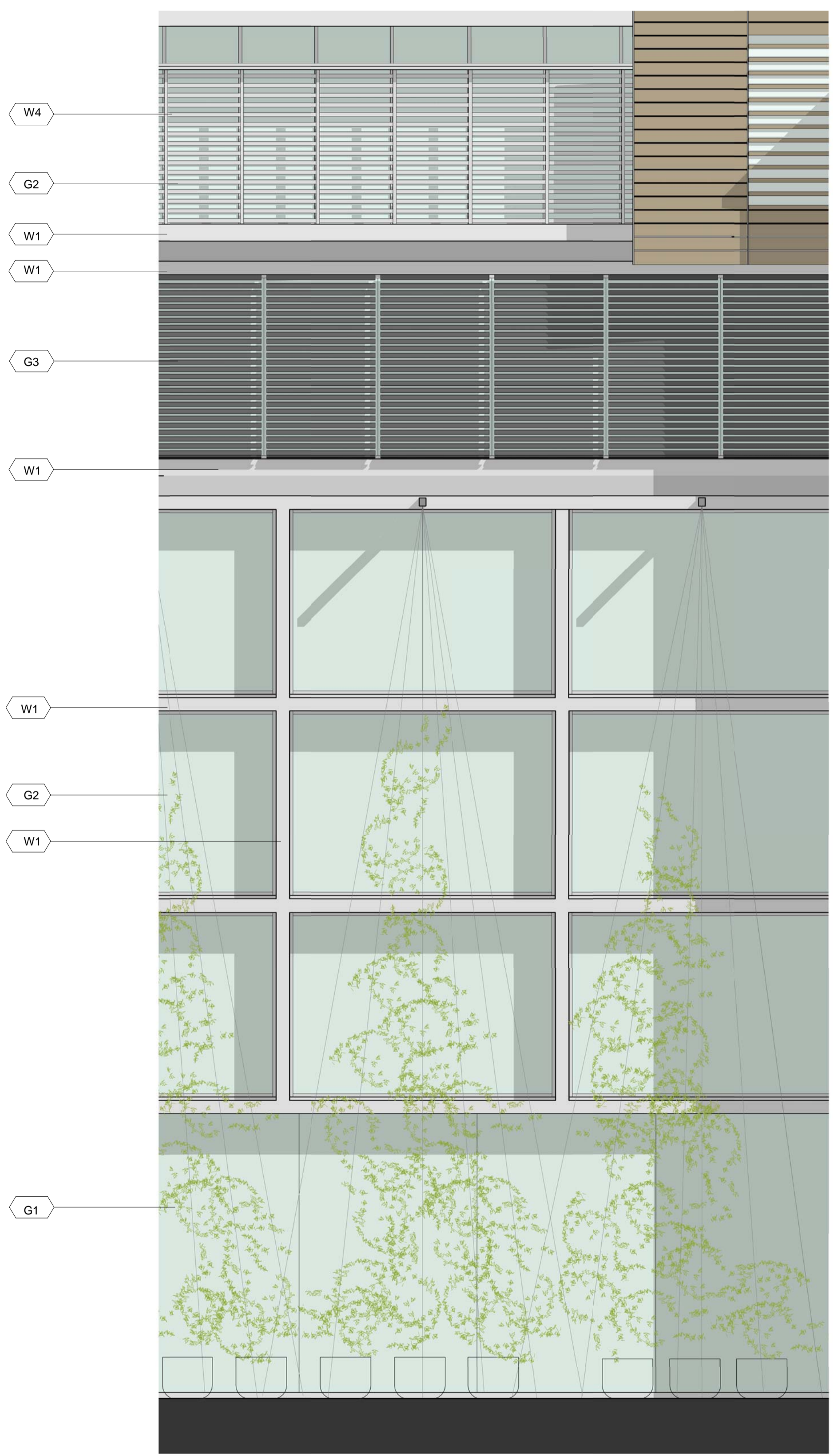
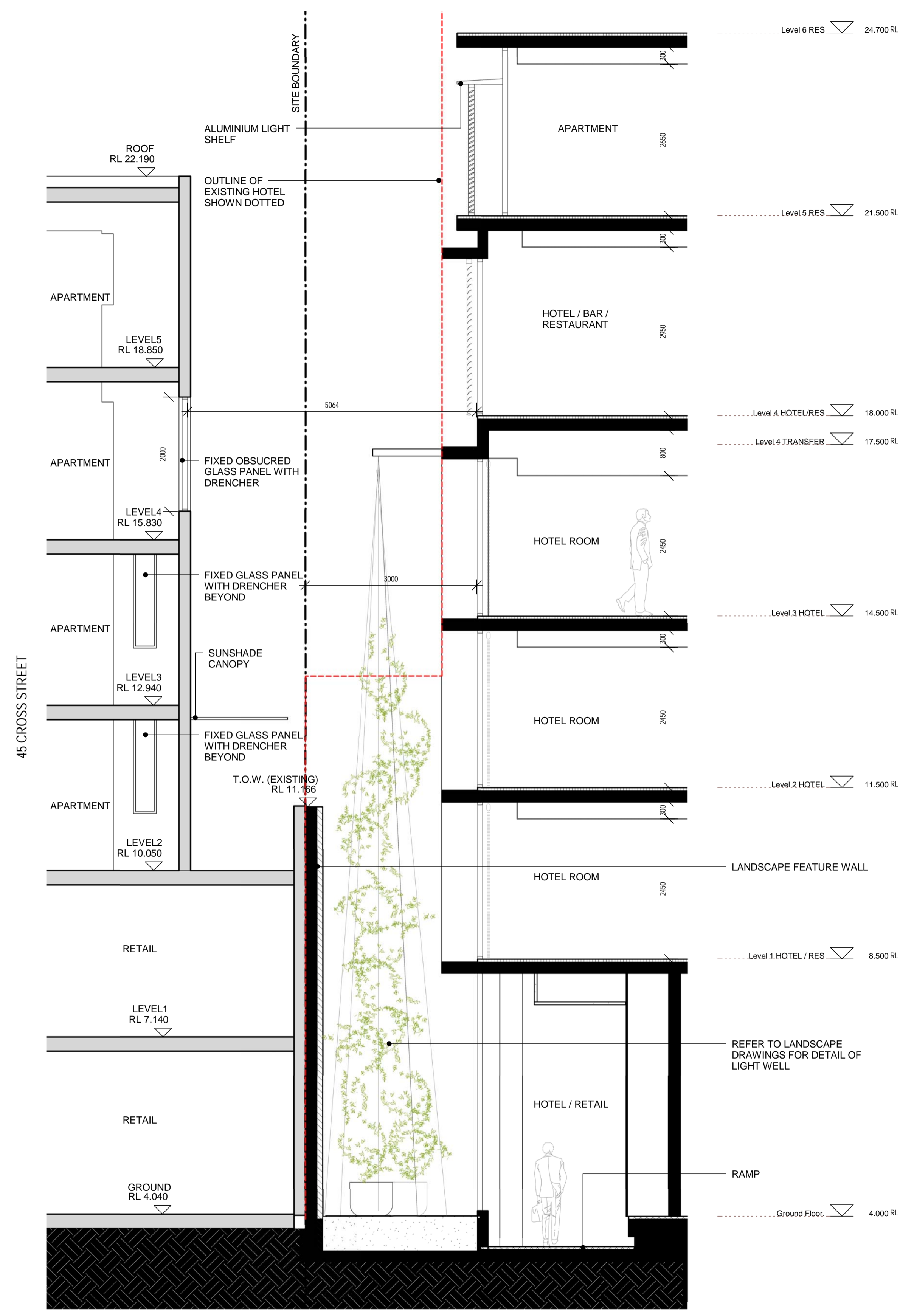


Do not scale drawings. Verify all dimensions on site

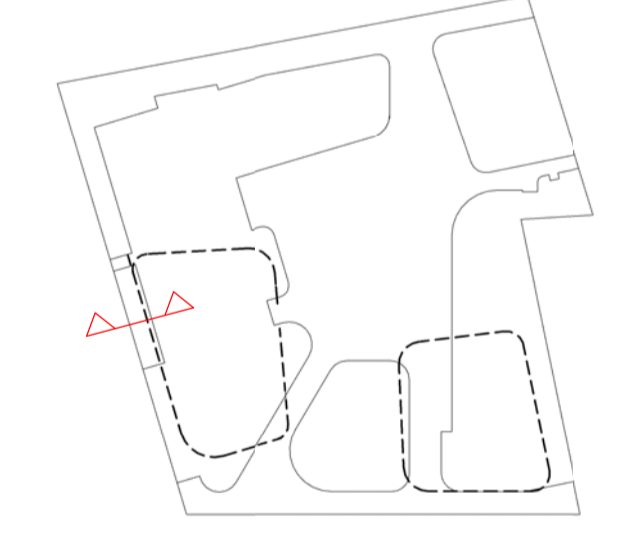
issue	amendment	date
-	ISSUE FOR QA REVIEW	02.02.09
A	ISSUE FOR ENVIRONMENTAL ASSESSMENT	20.02.09



**MATERIAL + FINISHES LEGEND**

- W1 CONCRETE - LAZUR FINISH
- W2 ALUMINIUM METAL CLADDING
- W3 MODULAR TERRACOTTA FACADE / SCREEN SYSTEM
- W4 ALUMINIUM FACADE / SCREEN SYSTEM
- W5 ZINC CLADDING
- W6 STONE CLADDING
- W7 ALUMINIUM LIGHT SHELF
- G1 FRAMELESS GLAZING
- G2 ALUMINIUM FRAMED GLAZING SUITE
- G3 ALUMINIUM FRAMED GLAZING SUITE WITH EXTERNAL RETRACTABLE BLIND SYSTEM
- B1 FRAMELESS GLASS BALUSTRADE

**KEY PLAN**



**architectus™**

Architectus Sydney  
 Level 3 341 George Street  
 Sydney NSW 2000  
 T (61 2) 8222 8400  
 F (61 2) 8222 8600  
 sydney@architectus.com.au  
 ABN 11 088 489 448

project  
**33 CROSS STREET, DOUBLE BAY**

drawing  
**DETAIL SECTION 3-3**

scale	1:50 @ A1	drawing no.	
drawn	II/AD		<b>DA03-23</b>
checked	CO	issue	
project no	070068		<b>A</b>

**1 SECTION DETAIL 3-3**  
 Scale: 1 : 50

**2 ELEVATION DETAIL 3-3**  
 Scale: 1 : 50