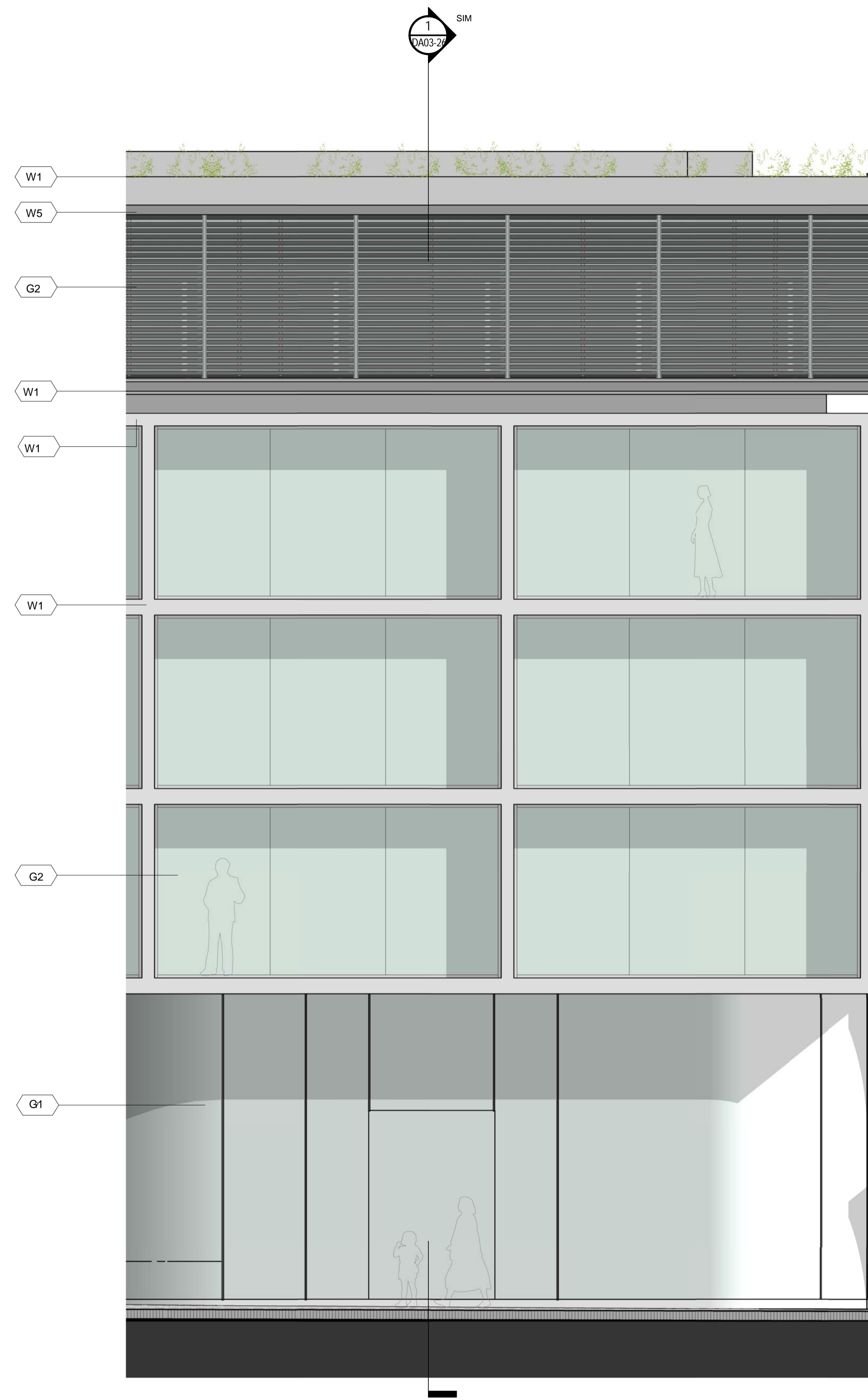
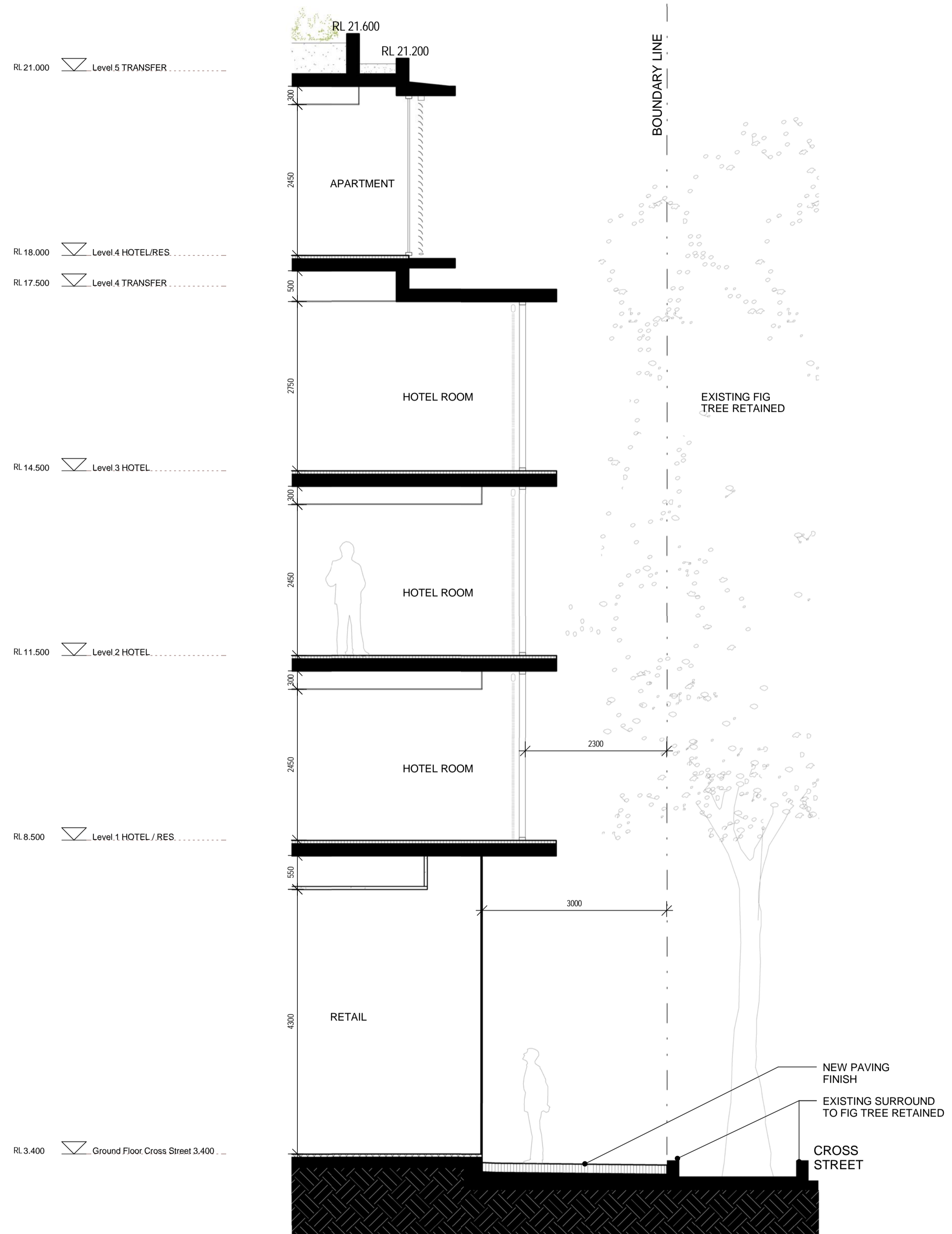


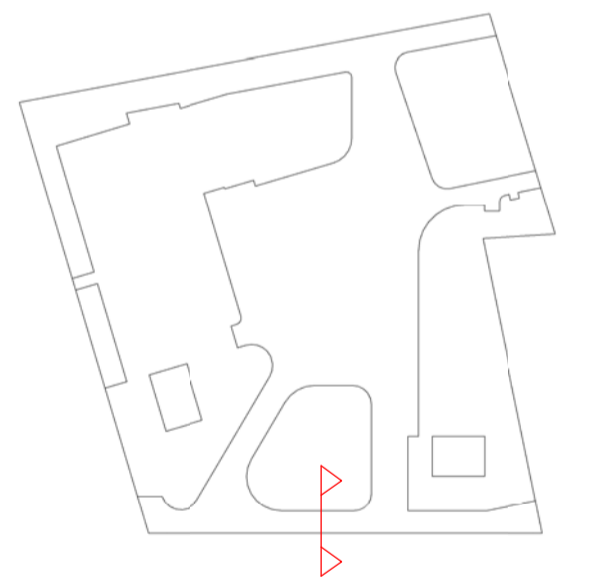
Do not scale drawings. Verify all dimensions on site

issue	amendment	date
-	ISSUE FOR QA REVIEW	02.02.09
A	ISSUE FOR ENVIRONMENTAL ASSESSMENT	20.02.09



MATERIAL + FINISHES LEGEND

- W1 CONCRETE - LAZUR FINISH
- W2 ALUMINIUM METAL CLADDING
- W3 MODULAR TERRACOTTA FACADE / SCREEN SYSTEM
- W4 ALUMINIUM FACADE / SCREEN SYSTEM
- W5 ZINC CLADDING
- W6 STONE CLADDING
- W7 ALUMINIUM LIGHT SHELF
- G1 FRAMELESS GLAZING
- G2 ALUMINIUM FRAMED GLAZING SUITE
- G3 ALUMINIUM FRAMED GLAZING SUITE WITH EXTERNAL RETRACTABLE BLIND SYSTEM
- B1 FRAMELESS GLASS BALUSTRADE



1 SECTION DETAIL 6-6
 DA03-26 Scale: 1 : 50

2 ELEVATION DETAIL 6-6
 Scale: 1 : 50

architectus™

Architectus Sydney
 Level 3 341 George Street
 Sydney NSW 2000
 T (61 2) 8522 8400
 F (61 2) 8522 8600
 sydney@architectus.com.au
 Melbourne
 Auckland
 Brisbane
 Shanghai
 ABN 11 088 489 448

project
 33 CROSS STREET, DOUBLE BAY

drawing
 DETAIL SECTION 6-6

scale 1:50 @ A1 drawing no.
 drawn IIP/AD DA03-26
 checked CO issue
 project no 070068 A