

Architectus Sydney Pty Ltd is the owner of the copyright subsisting in these drawings, plans, designs and specifications. They must not be used, reproduced or copied, in whole or in part, nor may the information, ideas and concepts therein contained (which are confidential to Architectus Sydney Pty Ltd) be disclosed to any person without the prior written consent of that company.

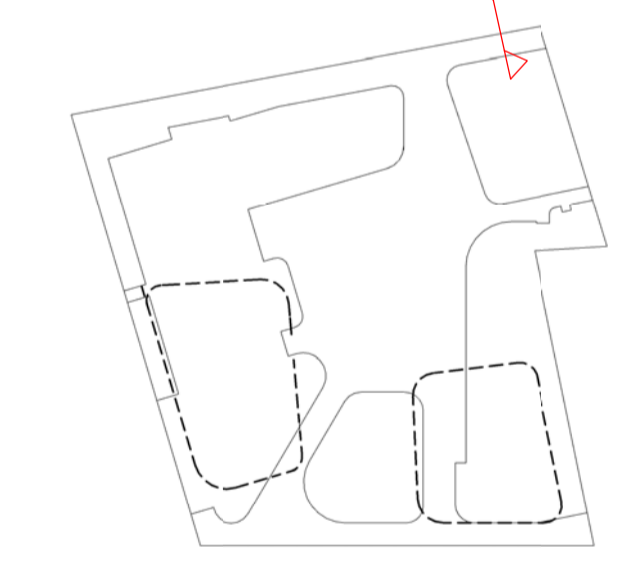
Do not scale drawings. Verify all dimensions on site

issue	amendment	date
-	ISSUE FOR QA REVIEW	02.02.09
A	ISSUE FOR ENVIRONMENTAL ASSESSMENT	20.02.09

MATERIAL + FINISHES LEGEND

- W1 CONCRETE - LAZUR FINISH
- W2 ALUMINIUM METAL CLADDING
- W3 MODULAR TERRACOTTA FACADE / SCREEN SYSTEM
- W4 ALUMINIUM FACADE / SCREEN SYSTEM
- W5 ZINC CLADDING
- W6 STONE CLADDING
- W7 ALUMINIUM LIGHT SHELF
- G1 FRAMELESS GLAZING
- G2 ALUMINIUM FRAMED GLAZING SUITE
- G3 ALUMINIUM FRAMED GLAZING SUITE WITH EXTERNAL RETRACTABLE BLIND SYSTEM
- B1 FRAMELESS GLASS BALUSTRADE

KEY PLAN



architectus™

Architectus Sydney
 Level 3 341 George Street
 Sydney NSW 2000
 T (61 2) 8222 8400
 F (61 2) 8222 8600
 sydney@architectus.com.au
 ABN 11 088 489 448

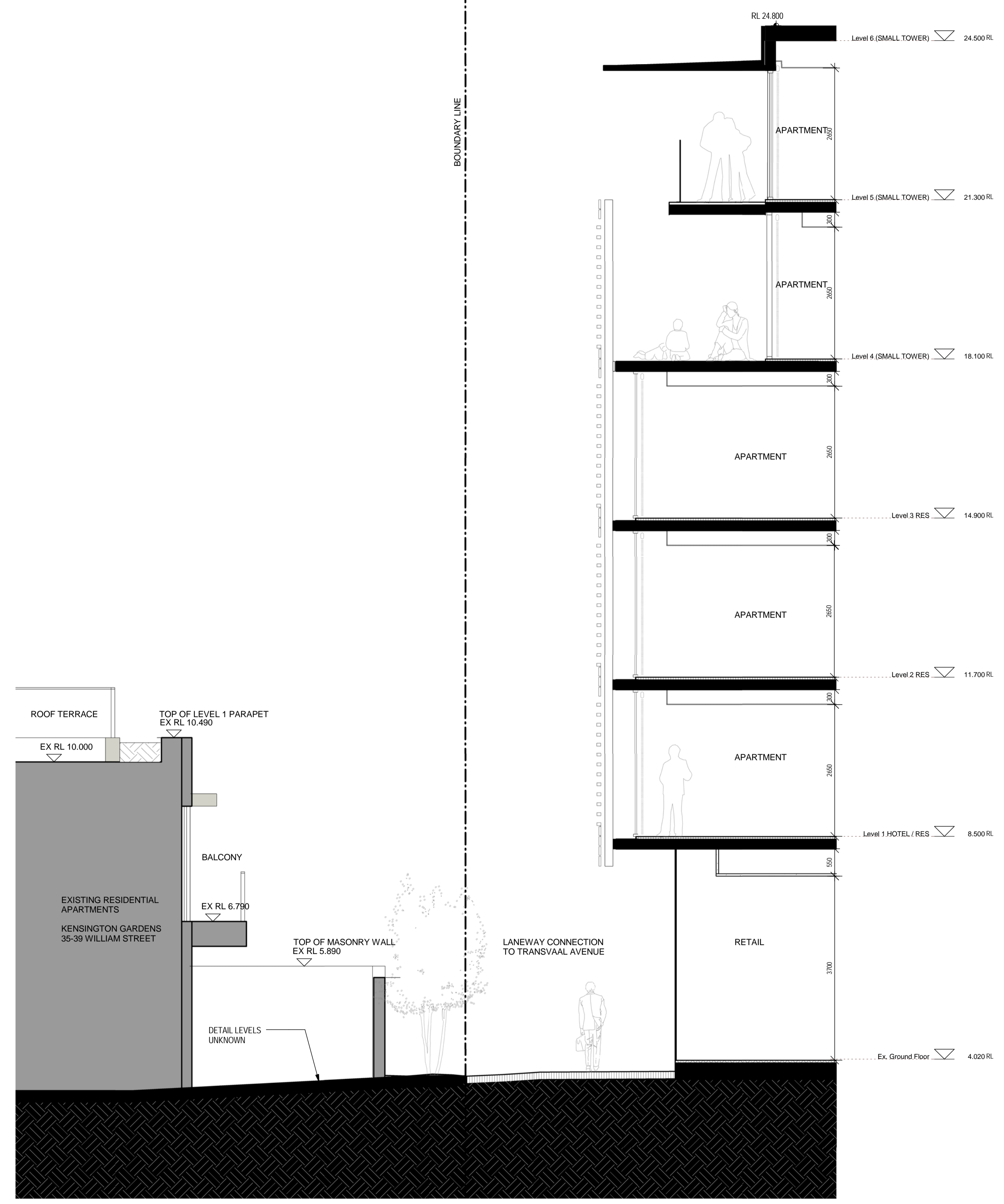
Sydney
 Melbourne
 Auckland
 Brisbane
 Shanghai

project 33 CROSS STREET, DOUBLE BAY

drawing DETAIL SECTION 7-7

scale	1:50 @ A1	drawing no.	
drawn	II/AD	issue	DA03-27
checked	CO	issue	
project no.	070068	issue	A

BOUNDARY LINE



1 SECTION DETAIL 7-7

Scale: 1 : 50

2 ELEVATION DETAIL 7-7

Scale: 1 : 50