

**AREA SCHEDULE - GFA
WOOLHARA COUNCIL LEP**

SITE AREA = 3674.0 sqm (approx)
0.10 x SITE AREA = 367.4 sqm

GFA MEASURED TO EXTERNAL FACE OF EXTERNAL WALLS.

AREAS INCLUDED IN WOOLHARA COUNCIL LEP GFA CALCULATION INCLUDE:

- VOIDS, STAIRS & LIFTS;
- PART OF BALCONIES WHICH EXCEEDS 20.0sqm PER RESIDENCE DWELLING;
- PART OF BALCONIES WHICH EXCEEDS 10% OF SITE AREA FOR NON-RESIDENTIAL USE.

AREAS EXCLUDED FROM WOOLHARA COUNCIL LEP GFA CALCULATION INCLUDE:

- CARPARKING (INCL. ACCESS TO CARPARKING);
- UNCOVERED ROOF TERRACES.

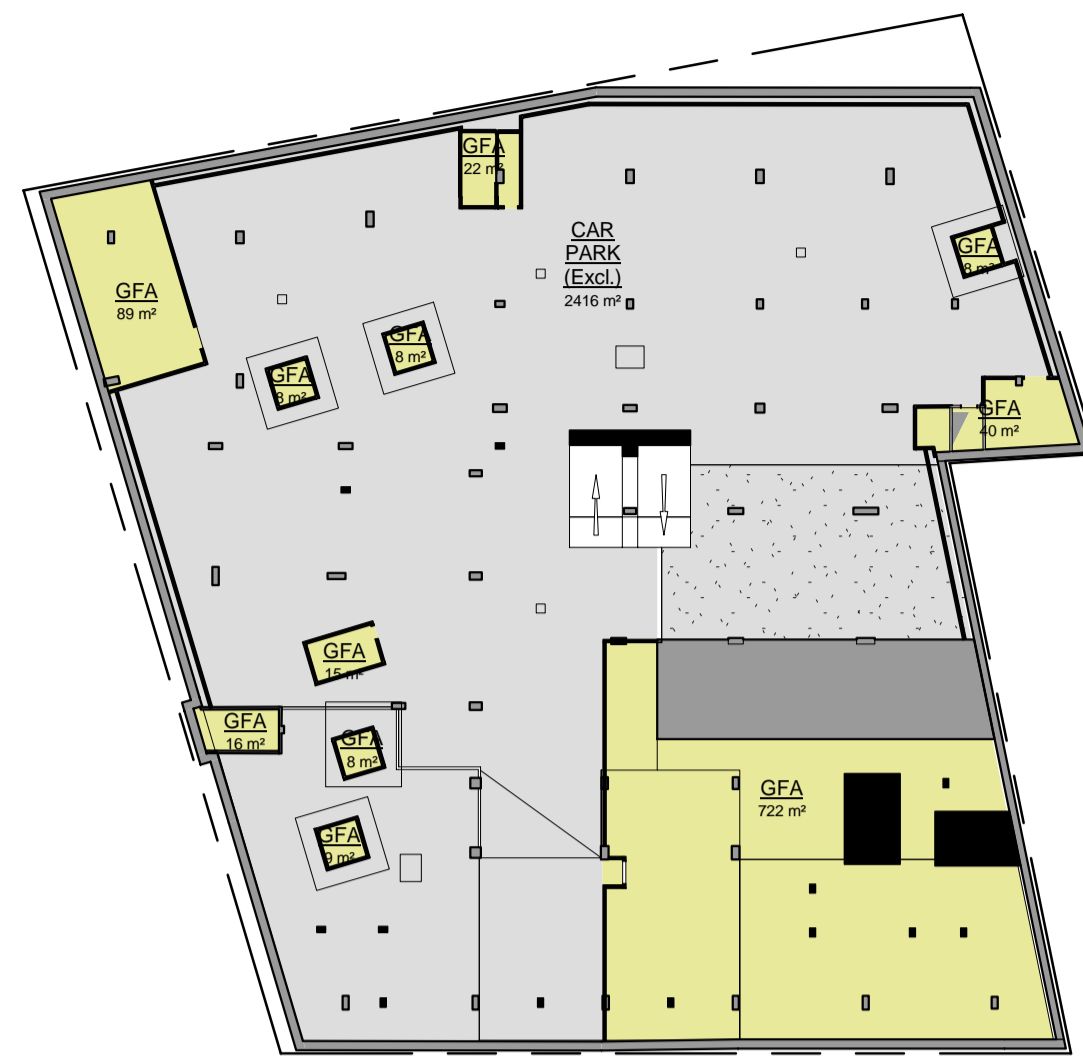
DEVELOPMENT SUMMARY

GFA TOTAL = 19,545 sqm

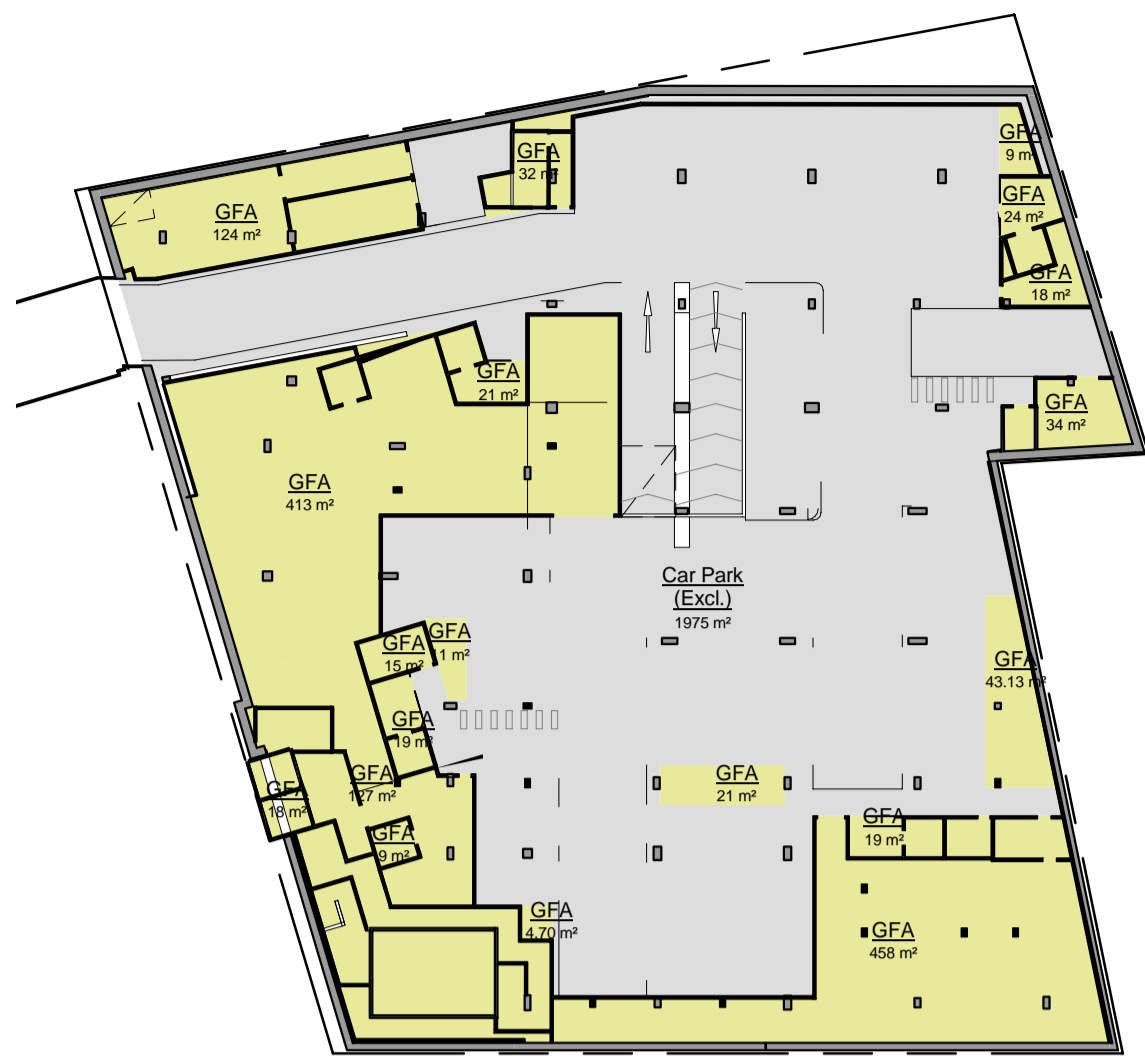
- 39 APARTMENTS
- 66 HOTEL ROOMS
- 107 CAR PARK SPACES
- 49 UPPER BASEMENT
- 58 LOWER BASEMENT

Do not scale drawings. Verify all dimensions on site

issue	amendment	date
-	ISSUED FOR INFORMATION	12.12.08
A	ISSUED FOR INFORMATION	19.01.09
B	ISSUE FOR QA REVIEW	02.02.09
C	ISSUE FOR ENVIRONMENTAL ASSESSMENT	20.02.09



1 Ex. Lower Basement
DA03-11 Scale: 1 : 500



2 Ex. Upper Basement
DA03-11 Scale: 1 : 500



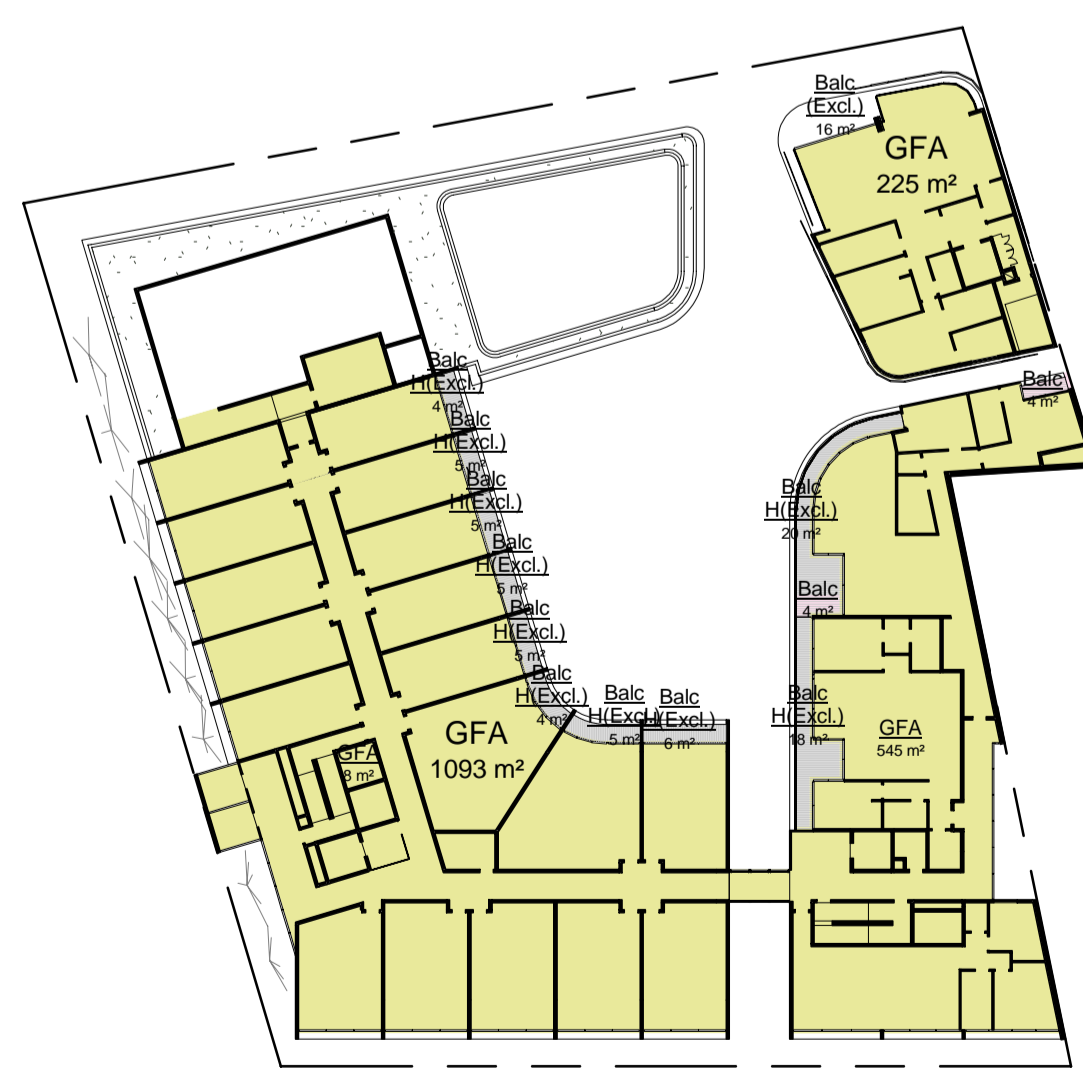
3 Ground Floor
DA03-01 Scale: 1 : 500



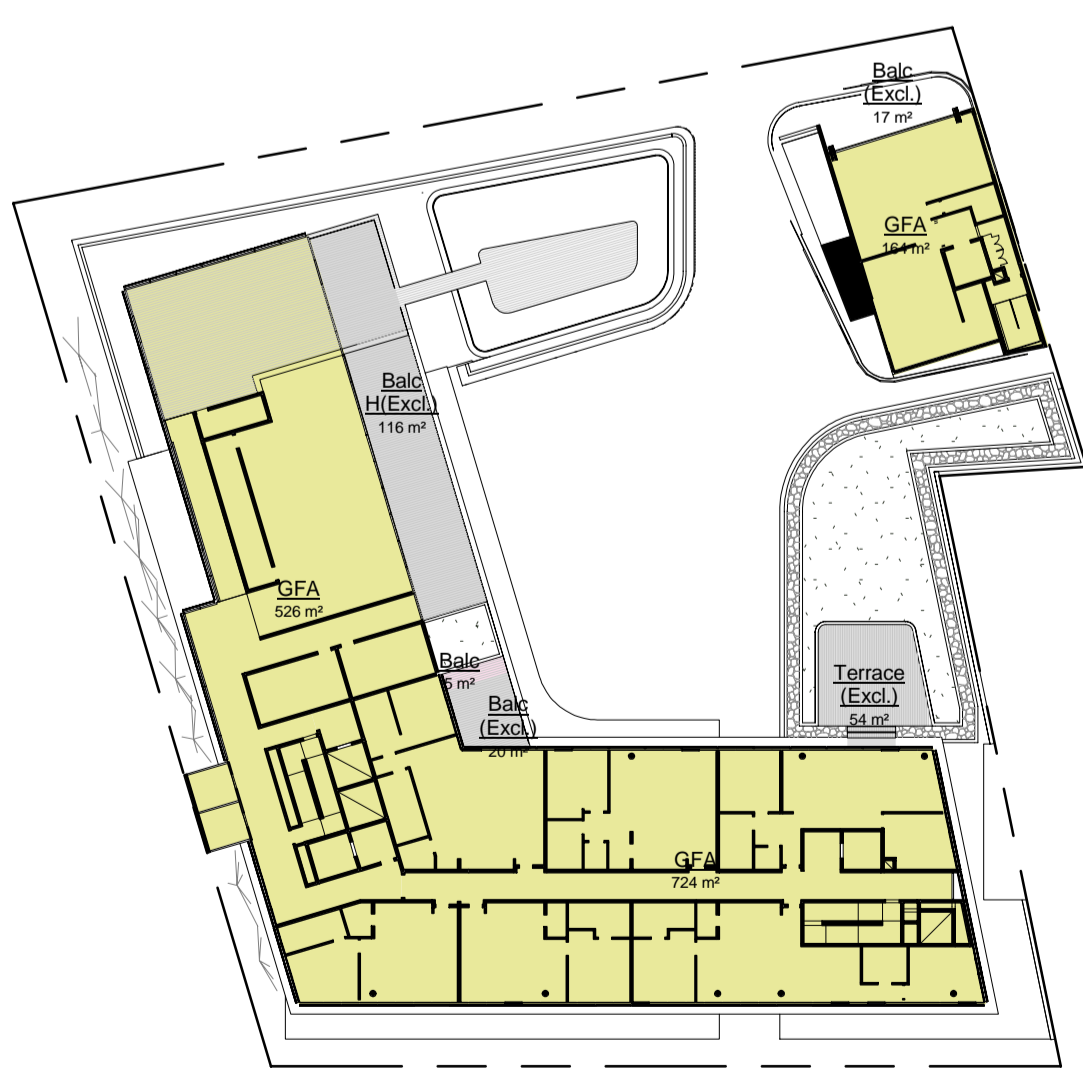
4 Level 1
DA03-01 Scale: 1 : 500



5 Level 2
DA03-01 Scale: 1 : 500



6 Level 3 HOTEL / RES
DA03-01 Scale: 1 : 500



7 Level 4 HOTEL/RES
DA03-01 Scale: 1 : 500



8 Level 5
DA03-01 Scale: 1 : 500

Level	GFA
Ex. Basement Lower	947
Ex. Basement Upper	1419
Ground Floor.	2106
Level 1 HOTEL / RES	2328
Level 2 RES	2328
Level 3 RES	1880
Level 4 HOTEL/RES	1419
Level 5 RES	894
Level 6 RES	729
Level 7 RES	729
Level 8 RES	729
Level 9 RES	729
Level 10 RES	729
Level 11 RES	729
Level 12 RES	729
Level 13 RES	729
Level 14 PLANT	389
Grand total: 91	19545



Architectus Sydney
Level 3 341 George Street
Sydney NSW 2000
T (61 2) 8232 8400
F (61 2) 8232 8600
sydney@architectus.com.au
ABN 11 088 489 448

project
33 CROSS STREET, DOUBLE BAY

drawing
GROSS FLOOR AREA (Woolhara LEP)

scale	1:500 @ A1	drawing no.	
drawn	AD/TF/DR/II		DA13-10
checked	CO	issue	
project no	070068		C