

**AREA SCHEDULE - GFA
WOOLHARA COUNCIL LEP**

SITE AREA = 3674.0 sqm (approx)
0.10 x SITE AREA = 367.4 sqm

GFA MEASURED TO EXTERNAL FACE OF EXTERNAL WALLS.

AREAS INCLUDED IN WOOLHARA COUNCIL LEP GFA CALCULATION INCLUDE:

- VOIDS, STAIRS & LIFTS;
- PART OF BALCONIES WHICH EXCEEDS 20.0sqm PER RESIDENCE DWELLING;
- PART OF BALCONIES WHICH EXCEEDS 10% OF SITE AREA FOR NON-RESIDENTIAL USE.

AREAS EXCLUDED FROM WOOLHARA COUNCIL LEP GFA CALCULATION INCLUDE:

- CARPARKING (INCL. ACCESS TO CARPARKING);
- UNCOVERED ROOF TERRACES.

DEVELOPMENT SUMMARY

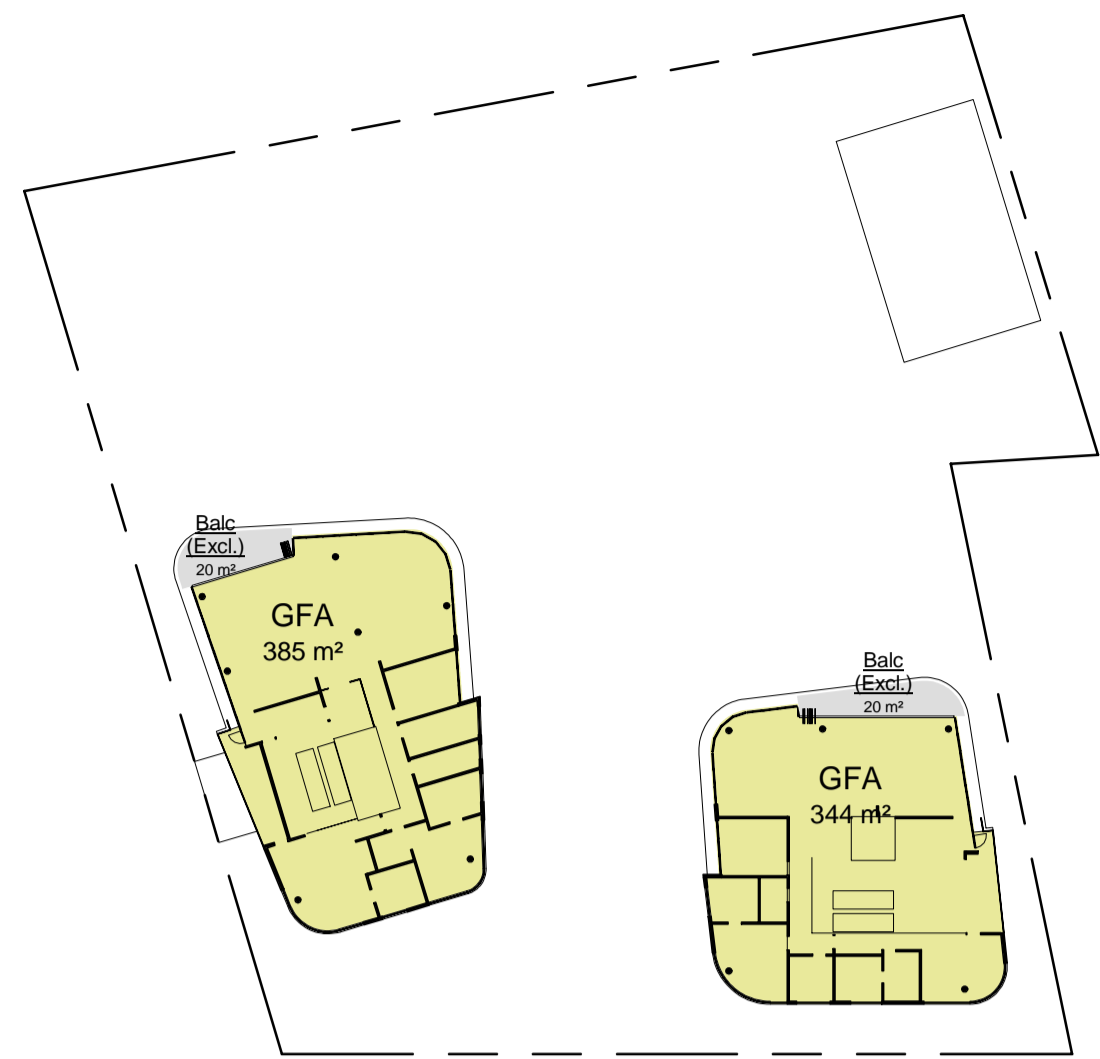
GFA TOTAL = 19,545 sqm

39 APARTMENTS
66 HOTEL ROOMS
107 CAR PARK SPACES

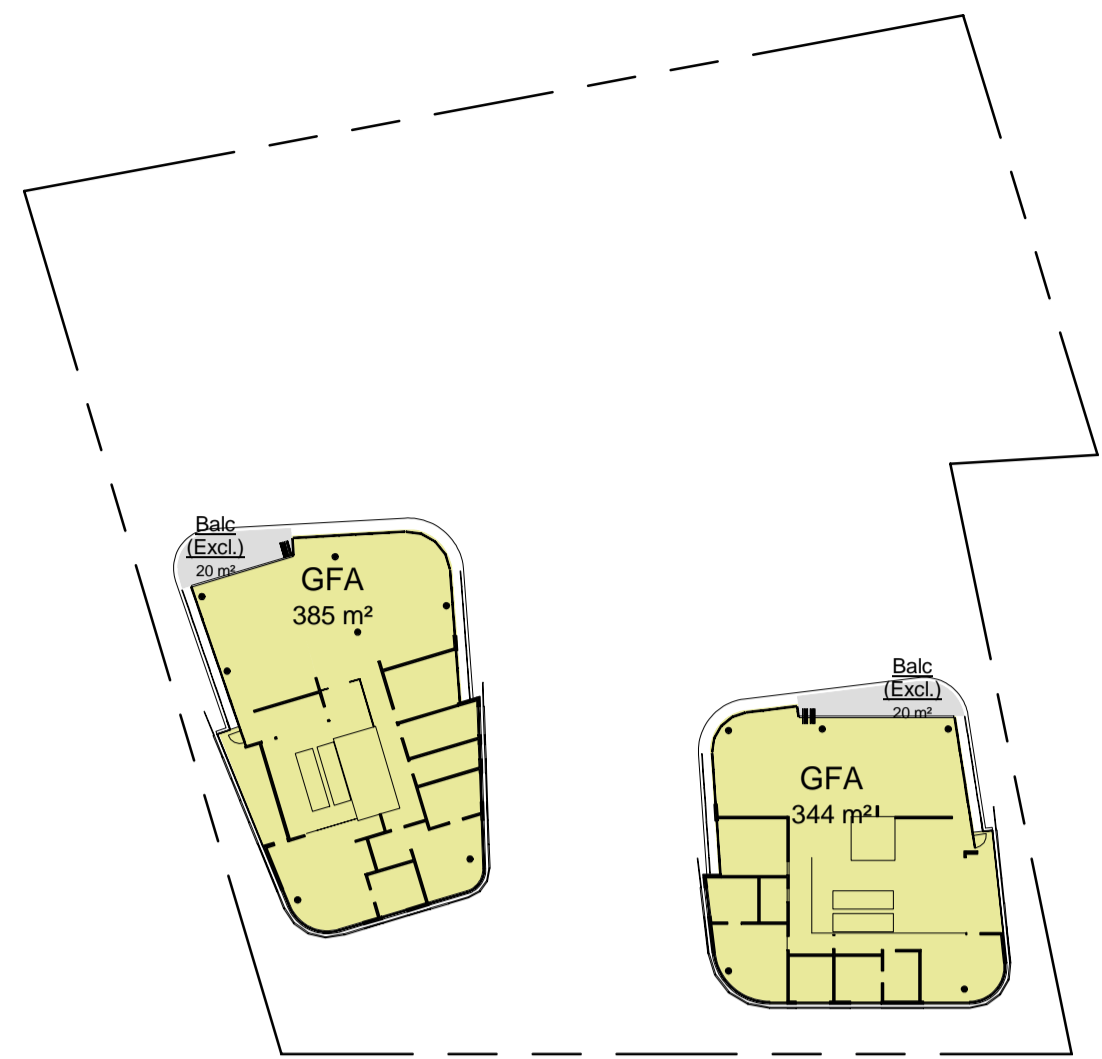
49 UPPER BASEMENT
58 LOWER BASEMENT

Do not scale drawings. Verify all dimensions on site

issue	amendment	date
-	ISSUED FOR INFORMATION	12.12.08
A	ISSUED FOR INFORMATION	19.01.09
B	ISSUE FOR QA REVIEW	02.02.09
C	ISSUE FOR ENVIRONMENTAL ASSESSMENT	20.02.09



1 Level 6
DA03-01 Scale: 1 : 500



2 Level 7
DA03-01 Scale: 1 : 500



3 Level 8
DA03-01 Scale: 1 : 500



4 Level 9
DA03-01 Scale: 1 : 500



5 Level 10
DA03-01 Scale: 1 : 500



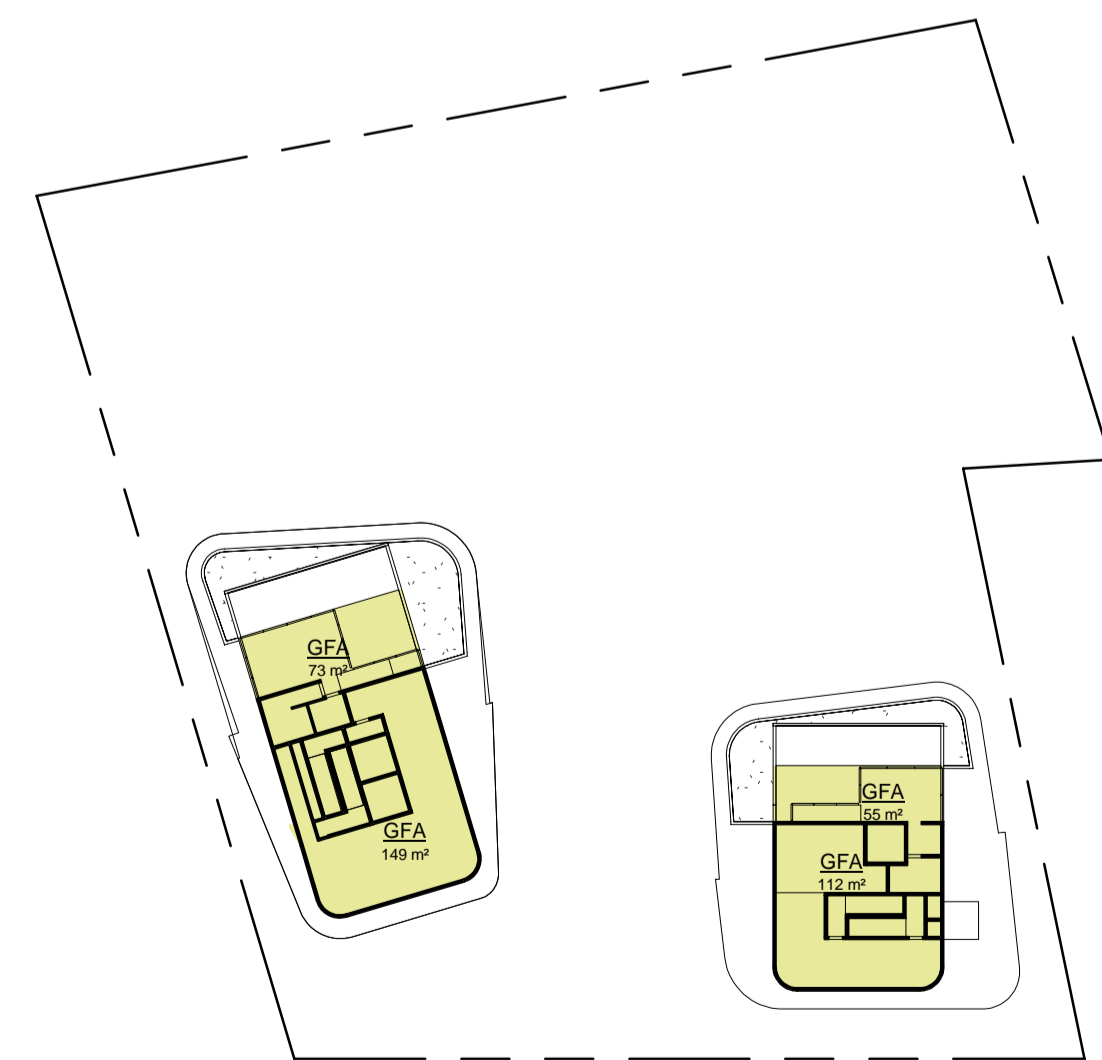
6 Level 11
DA03-01 Scale: 1 : 500



7 Level 12
DA03-01 Scale: 1 : 500



8 Level 13
DA03-01 Scale: 1 : 500



9 Level 14
DA03-01 Scale: 1 : 500

Level	GFA
Ex. Basement Lower	947
Ex. Basement Upper	1419
Ground Floor.	2106
Level 1 HOTEL / RES	2328
Level 2 RES	2328
Level 3 RES	1880
Level 4 HOTEL/RES	1419
Level 5 RES	894
Level 6 RES	729
Level 7 RES	729
Level 8 RES	729
Level 9 RES	729
Level 10 RES	729
Level 11 RES	729
Level 12 RES	729
Level 13 RES	729
Level 14 PLANT	389
Grand total: 91	19545



Architectus Sydney
Level 3 341 George Street
Sydney NSW 2000
T (61 2) 8522 8400
F (61 2) 8522 8600
sydney@architectus.com.au
ABN 11 088 489 448

project
33 CROSS STREET, DOUBLE BAY

drawing
GROSS FLOOR AREA (Woolhara LEP)

scale 1:500 @ A1 drawing no. **DA13-11**
drawn AD/TF/DR/II
checked CO issue
project no 070068