

MEMORANDUM / FACSIMILE

PROJECT NAME	FACSIMILE NUMBER
POWMRI	email only
TO	PAGES INCLUDING THIS FORM
COX	3
ATTENTION	DATE
Michael Grave	16 December 2008
FROM	TOPIC
George Gallagher	Landscape Report (revision 3)
PHONE CONVERSATION / FILE NOTE / SITE INSPECTION / MINUTES OF MEETING /	
Draft for COX / Winton review.	

Existing Conditions

- Located within the grounds of the Prince of Wales Hospital, the Neuroscience Research Precinct is bounded by Barker Street to the south, Easy Street and the Memorial Garden to the east and Hospital Road along the western boundary.
- The site is currently occupied by the Randwick Ambulance station, the Prince of Wales Medical Research Institute, and the Black Dog Institute.
- The main entry to the hospitals is off Barker Street along Easy Street.
- Barker Street is part of the district and neighbourhood grid street pattern. It is an established and built up area comprising predominantly of low scale residential development, with only a few areas of medium density, creating a character which is more open. Directly opposite the site is the "Newmarket Sale Ring" and Randwick Girls High School.
- The existing streetscape is generally nondescript with narrow verges, narrow and uneven footpaths, limited and adhoc and sparse tree planting, and a predominance of overhead power lines and other utility services. Barker Street is heavily trafficked and pedestrian amenity is very low. Small Jacaranda trees have been planted along both sides of Barker Street in recent times.
- The new development aims to reactivate Barker Street by locating the main building entrance facing the street; the opportunity exists to enhance the current streetscape with high quality landscape material and planting as part of the development.
- From Barker Street, Easy Street rises gently up to the hospital arrival square and car park structures. The pedestrian footpath is narrow, and located immediately adjacent to the street kerb. This footpath is the main pedestrian route, leading from the bus stop on Barker Street to the main square and hospital building entrance.
- Part way along Easy Street, at the north edge of the POWMRI site, and immediately south of the Kiloh Centre, there is a small plaza with seating and memorial garden. This memorial garden was installed in 2000 at the time that the Kiloh Centre was constructed. This memorial garden commemorates the lives of the children who died at the Randwick Destitute Children's Asylum

TRACT CONSULTANTS PTY LTD
 ABN 75 423 048 499
 LEVEL 8, 80 MOUNT STREET
 NORTH SYDNEY
 2060 NSW AUSTRALIA
 TELEPHONE 61 2 9954 3733
 FACSIMILE 61 2 9954 3825
 sydney@tract.net.au

SYDNEY
 MELBOURNE BRISBANE

between 1858 and 1916 and is historically significant to the site. The memorial garden comprises a native garden bed wherein is interred the remains of some of those children, recovered from the former cemetery site on which the Kiloh Centre is now located. In addition, there are plaques with the names of all the children that are recorded to have been buried in the former cemetery, as well as interpretive and information signage relating to the history of the site, the former cemetery, and the current memorial garden itself.

- Immediately south of the memorial garden is a landscaped open space with a grid of heavily pruned weeping fig trees (*Ficus Hillii*), open grass and edge planting on the west boundary, adjacent to a steep level drop. This open space is the same width as the memorial garden at the north end, and narrows significantly along its length, and it follows the grade of Easy Street (1:14 approx) and serves as a pleasant landscape verge to Easy Street.
- Hospital Road along the western boundary is a private road used by ambulances and delivery trucks accessing the loading docks. It has restricted parking facilities. Due to it's current "in-house" requirements and restrictions, the street will most likely be maintained as a service road.
- The existing vegetation on the site is a mixture of native and exotic trees and shrubs, planted as part of sequential developments and redevelopments of the site. These species include Jacaranda, Alnus, Banksia, Callistemon, Melaleuca, and Eucalypts. The 'lollypop' *Ficus hillii* along the Easy Street verge were planted in 2000, are purely decorative, and could be transplanted if desired. The largest specimens on the site are some Eucalypts located on the north edge of the site, adjacent to the Black Dog Institute. These will be removed as part of the development of the site. None of the existing vegetation is endemic nor comprises a vegetation community, nor habitat.
- The Site is situated on former gently rising sand dunes and is slightly elevated. There are some views to the surrounding urban areas.

Proposed Landscape Development

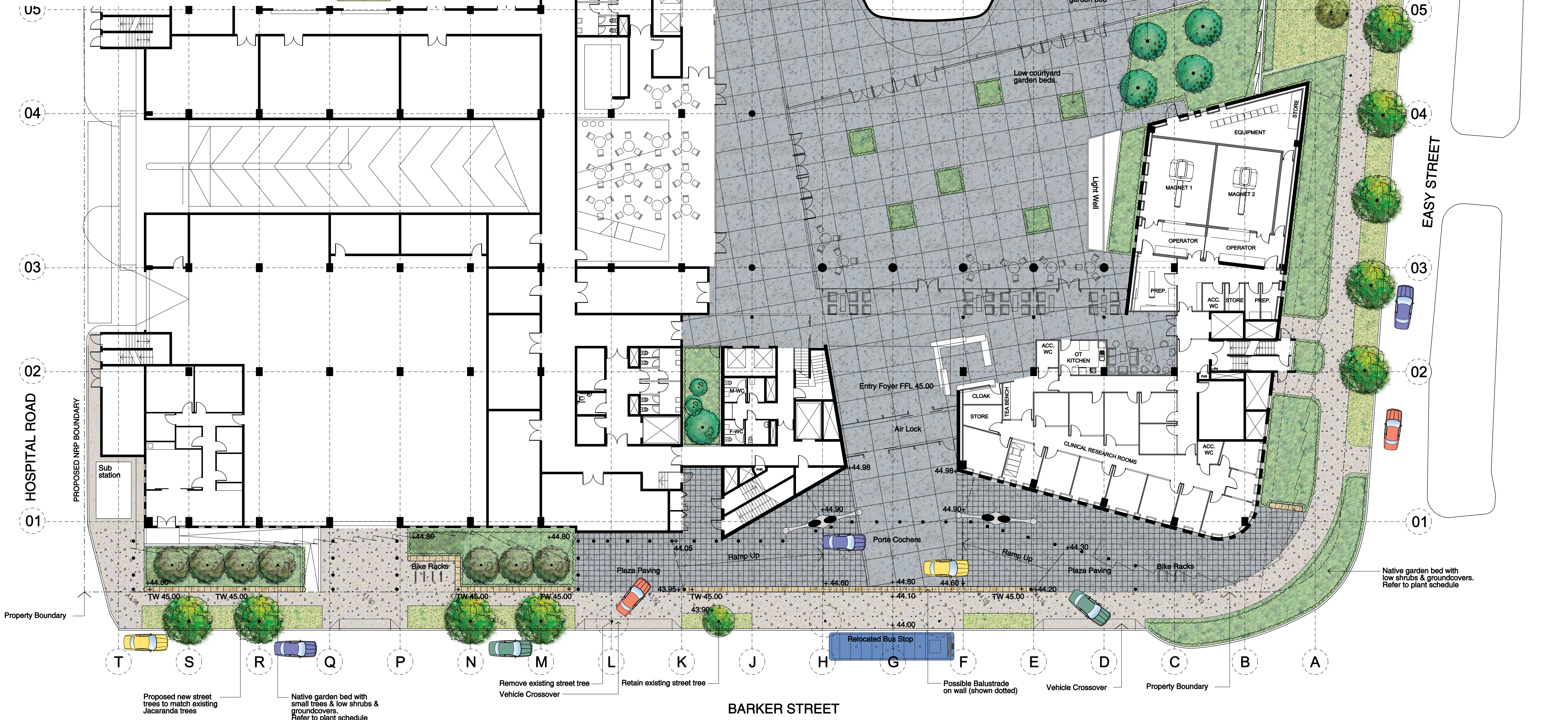
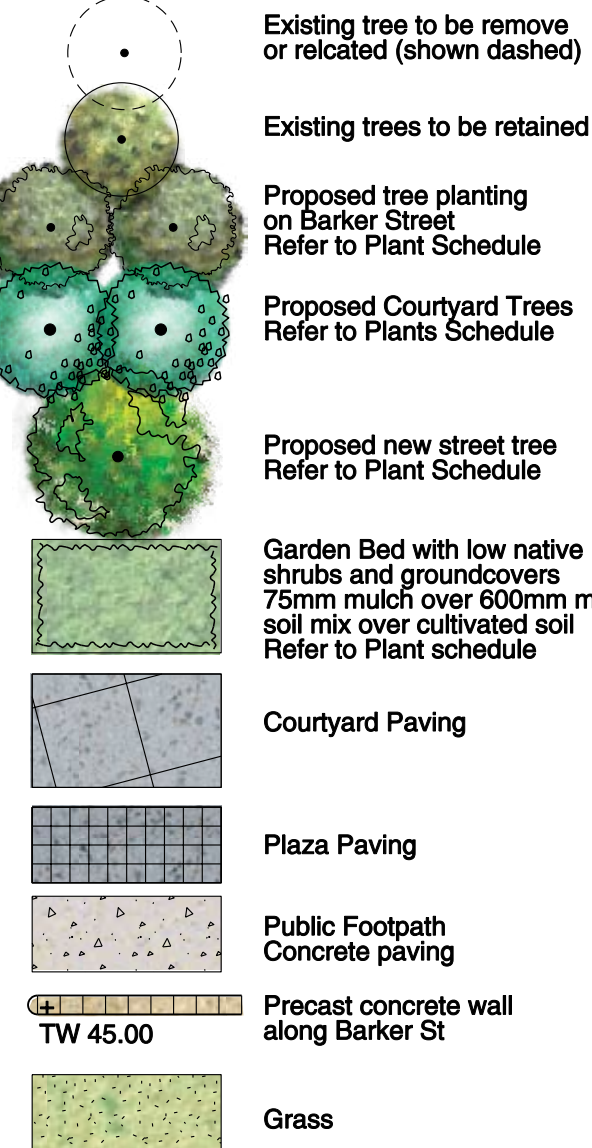
- The POWMRI development provides the opportunity to upgrade and activate the public domain on Barker Street between Hospital Road and Barker Street, as well as significantly improving the quality of the pedestrian amenity and streetscape along the west verge of Easy Street, from Barker Street to the Kiloh Centre.
- The landscape and site design provides generous pedestrian zones at the new building entry plaza, the public bus stop, and the Easy Street footpath itself which is relocated, realigned and widened to provide a better level of amenity and service.
- The existing open space south of the memorial garden is retained, with some of the Fig Trees being transplanted to accommodate the widened and relocated Easy Street footpath. The new building and the landscaped verge engages with the open space at its southern extremity.

- Within the POWMRI built form, a secure central landscape court is provided at the ground level, adjacent to the entry foyer, the cafeteria and the auditorium. This staff space is intended for passive recreation, outdoor dining and refreshment, and as a gathering space for staff and their visitors.
- Along Barker Street, the wide setback zone will be landscaped with hardy native grasses, ground covers, and low shrubs as well as taller growing native trees that will provide visual relief and interest along this frontage. Plants will be chosen to suit the prevailing environmental conditions here, particularly the shade and shadow from the building. Depending on the present and future location of services in the street verge, new street trees and verge grassing would be installed in accordance with Council requirements.
- Along Hospital Road, due to the intensive nature of the servicing of the hospital now and in the future, and the new POWMRI itself, there is little opportunity to introduce new tree planting. Wherever feasible, garden beds with low shrubs, grasses and groundcovers will be introduced to reduce the quantum of hard paved surfaces.

PLANT SCHEDULE - Ground Level

Code	Botanical Name	Common Name	Location	Container Size	Size at Maturity	Spacing
Street Trees						
Gf	Glochidion fernandi	Cheese Tree	Easy St	200 litre	10m tall, 6m wide	As Shown
Jm	Jacaranda mimosifolia	Jacaranda	Barker St	200 litre	8m tall, 6m wide	As Shown
Small Trees						
Pc	Pyrus calleryana	Callery Pear	Courtyard	100 litre	4-5m tall, 2-3m wide	As Shown
Sl	Syzygium luehmannii	Lilly Pilly	Barker St	100 litre	4-5m tall, 2-3m wide	As Shown
Shrubs & Groundcovers						
Bi	Banksia integrifolia prostrata	Prostrate banksia	All garden beds	5 litre		4/m2
Bd	Brachyloma daphnoides	Daphne Heath	All garden beds	2.5 litre		4/m2
Ca	Correa alba	White Correa	All garden beds	2.5 litre		4/m2
Ct	Calytrix tetragona	Fringe Myrtle	All garden beds	2.5 litre		4/m2
Cr	Correa reflexa	Native Fuchsia	All garden beds	2.5 litre		4/m2
Dc	Dianella congesta	Blue flax lilly	All garden beds	2.5 litre		4/m2
Ep	Epacris longiflora	Heath Fuchsia	All garden beds	2.5 litre		4/m2
Gs	Grevillea sericea	Pink Spider Grevillea	All garden beds	2.5 litre		4/m2
Gp	Grevillea speciosa	Red Spider Grevillea	All garden beds	2.5 litre		4/m2
Hs	Hibbertia scandens	Guinea Flower	All garden beds	2.5 litre		4/m2
Ls	Leptospermum squarosum	Pink Tea Tree	All garden beds	2.5 litre		3/m2
Li	Lomandra longifolia	Mat Rush	All garden beds	2.5 litre		4/m2
Le	Lomandra longifolia Tanika	Tanika Mat Rush	All garden beds	2.5 litre		4/m2
Pp	Petrophile pulchella	Conesticks	All garden beds	2.5 litre		4/m2
Si	Sprengelia incarnata	Pink Swamp Heath	All garden beds	5 litre		4/m2
Wf	Westringia fruticosa	Native Rosemary	All garden beds	5 litre		3/m2

LEGEND



Rev. No.	Description	Date	Drawn	Approved
01	REVISED CONCEPT DESIGN	01.05.09	LC	GG
00	INITIAL ISSUE - CONCEPT DESIGN	17.12.08	LC	GG

CONCEPT DESIGN
FOR INFORMATION

TRACT CONSULTANTS PTY LTD
ACN 055 213 842
LEVEL 6, 80 MOUNT STREET
NORTH SYDNEY
NEW SOUTH WALES 2060 AUSTRALIA
TELEPHONE 02 9554 3733
FACSIMILE 02 9554 3825
E-mail sydney@tract.net.au

Tract

Client
Prince of Wales Medical Research Institute

Barker Street Randwick NSW
NEUROSCIENCE RESEARCH PRECINCT
LANDSCAPE PLAN, GROUND FLOOR
Drawn: LC, Checked: GG, Approved: GG, Scale: 1:200 @ A1, Date: 01.05.09
Project Number: 208025 LD SK 01, Drawing Number: 01, Revision: 01