



PRINCE OF WALES MEDICAL RESEARCH INSTITUTE NEUROSCIENCE RESEARCH PRECINCT

Notes of consultation with the **Ambulance Service NSW** at its Sydney Division offices at Summer Hill on 4 December 2008.

Participants :

Rick Hamilton	-	ASNSW
Jeff Gilchrist	-	ASNSW
Jeff Freeman	-	POWMRI
Rod Winton	-	Winton Associates

Distribution :

Those above		
Ken Pritchard	-	ASNSW
Peter Schofield		POWMRI

1.0 EARLIER CONSULTATIONS

It was noted that Prof Peter Schofield and Dr Jeff Freeman had consulted with Mr Ken Pritchard and other ASNSW staff separately in 2006 and 2007 and discussed POWMRI's intention to develop the NRP and the alternatives ASNSW has been considering with respect to the Ambulance Station on Randwick site.

Note

Rod Winton had outlined the status of the development of the NRP to Rick Hamilton before the meeting and had by e-mail on 2 December 2008 provided ASNSW with a copy of the short presentation prepared to inform the POWMRI community, its precinct partners and State and Local government authorities of the proposal. A sketch layout indicating how the existing ambulance service facilities at Randwick could be re-housed within the NRP development in largely in its present location had also been provided.

Note

2.0 RANDWICK AMBULANCE STATION

The ASNSW's review of operations and long term planning is nearing finality. It has been confirmed that the Randwick service is one of its busiest and is strategically important in the provision of services to the regional community as well as disaster response to the Airport and the City.

Note

The ASNSW's vehicle fleet is being renewed every two years and the Randwick Station, initially constructed for 4 ambulances plus support vehicles is now equipped as follows:

Note

- * 6 Mercedes Emergency Response and Patient Transfer vehicles
- * 3 Subaru 4wd Rapid Response vehicles

Descriptions and details of the vehicles are on ASNSW's website and the Mercedes vehicles are nominally 6.2m in length. Additional vehicles are also parked overnight.

The existing two storey residence which had been vacant is being used for staff amenities at ground level and as a residence on the upper floor level for on-call response staff.

Note

Current staffing comprises 8 on day shift, 4 on night shift with two additional supporters with changeovers taking place over a half hour at 8:00am am and 8:00pm. Staff mix is now 40/60 F/M and 50/50 is expected.

Staff parking is currently provided under ASNSW's OHS policy.

3.0 ASNSW PLANNING

The ASNSW's review of operations and long term planning is continuing to consider the following alternatives, earlier indicated to POWMRI, for the Randwick Ambulance Station:

Note

- * Remaining in the existing station with or without residential facilities until funding becomes available to redevelop this portion of the NRP site
- * Relocating the facilities to another site should the planning review determine that is preferred and funding becomes available to ASNSW for that purpose
- * Being re-housed in new facilities located within Stage 2B within the same vertical module as the NRP complex generally with drive through entry and egress on redevelopment

Rick Hamilton tabled a copy of the layout for its new Ryde facilities and it was noted that its functionality could be improved with a larger area in the common room to facilitate shift changes.

Note

The sketch layout indicating how the existing ambulance service facilities could be re-housed within Stage 2B of the NRP development was reviewed and it was agreed that it would not adequately meet ASNSW's current operational needs as well as staff parking requirements.

Note

Rod Winton noted that the layout could be increased in width to provide the herringbone pattern of serviced vehicle parking as well as allow vehicle passing within the driveways. It was agreed that the layout should be revised accordingly and the revised layout is presented below.

WA

It was noted that this would provide something like the same land footprint as the existing station, residence and parking area.

Note

The meeting noted that additional staff parking can be provided within the Stage 2B basement with security access being provided through the fire stair within the building.

Note



PRINCE OF WALES MEDICAL RESEARCH INSTITUTE NEUROSCIENCE RESEARCH PRECINCT

Notes of consultation with the **Ambulance Service NSW Aeromedical Services and Retrievals** on 2 December 2008.

Participants : Gary Sinclair - ASNSW Aeromedical
Rod Winton - Winton Associates

Distribution : Those above
Ron Manning - ASNSW Aeromedical
Peter Schofield POWMRI

1.0 POWMRI NRP PROJECT

Rod Winton outlined the nature of the NRP project and the status of its development to Gary Sinclair. Note

It was noted that SESIAHS had approved the project with the application to the Minister and the Department of Planning for Part 3A determination. Note

It was noted that POWMRI has funding for Stage 2A of the NRP, and construction of the six storey high building would commence as early as April 2009, as soon as Part 3A Approval has been received. Construction of the remainder of the Stage 2 complex would commence progressively following completion of Stage 2A as further funding becomes available over the next 10 years or so. Note

It was noted that the NRP Concept includes the redevelopment of the Black Dog portion of the site for which approval would be sought after completion of Stage 2. Note

ASNSW Aeromedical was subsequently provided with a copy of the short presentation prepared to inform the POWMRI community, its precinct partners and State and Local government authorities of the proposal, by e-mail on 2 December 2008. Note

2.0 PRINCE OF WALES HOSPITAL HELIPAD

It was noted that the proposed Stage 2 buildings would top out at an elevation of approximately 78AHD and the Helicopter Landing Surface at the Prince of Wales Hospital is at 60.5AHD and this would require revision of approach and departure procedures for helicopter operations. Note



It was noted that the POWH helipad is not listed in Airservices Australia's ERSAs and DAP publications unlike the Westmead, Royal North Shore and Royal Prince Alfred Hospitals' helipads.

Note

Gary Sinclair noted that the website www.helipads.org is the resource now used by all careflight and emergency helicopter service agencies to inform pilot operations for approaches and departures for all HLSs and this is maintained and updated as necessary by Helipads Partners' senior pilots.

Note

Gary Sinclair noted he would inform Helipad Partners and appropriate revisions would be made to the POWH HLS plates.

Note

Rod Winton noted that POWMRI's consultants would provide any further information required to assist and inform as necessary.

Note

WINTON ASSOCIATES



PRINCE OF WALES MEDICAL RESEARCH INSTITUTE NEUROSCIENCE RESEARCH PRECINCT

File note of meeting with the **Chairmen & Executive Directors of Children's Cancer Institute Australia, Black Dog Institute & Prince of Wales Medical Research Institute** held at POWMRI on 10 November 2008 at 5.00 to 6.45pm.

Participants :

Michelle Haber	Exec Director, CCIA
Joe Collins	Chairman, CCIA
Gordon Parker	Exec Director, BDI
Peter Joseph	Chairman, BDI
Peter Schofield	Exec Director & CEO, POWMRI
Paul Brassil	Chairman, POWMRI

Distribution : Those above

1.0 AGENDA

- 1 Discussion regarding Hub Governance arrangements including proposed Hub Constitution. Update on OSMR review of MRSP program and impacts for Hub Governance.
- 2 Discussion of NRP plans dated Oct 2008 as accepted by POWMRI Board.

2.0 DISCUSSION

The plans were tabled at the meeting and attendees asked to provide further and more considered comments following the meeting.

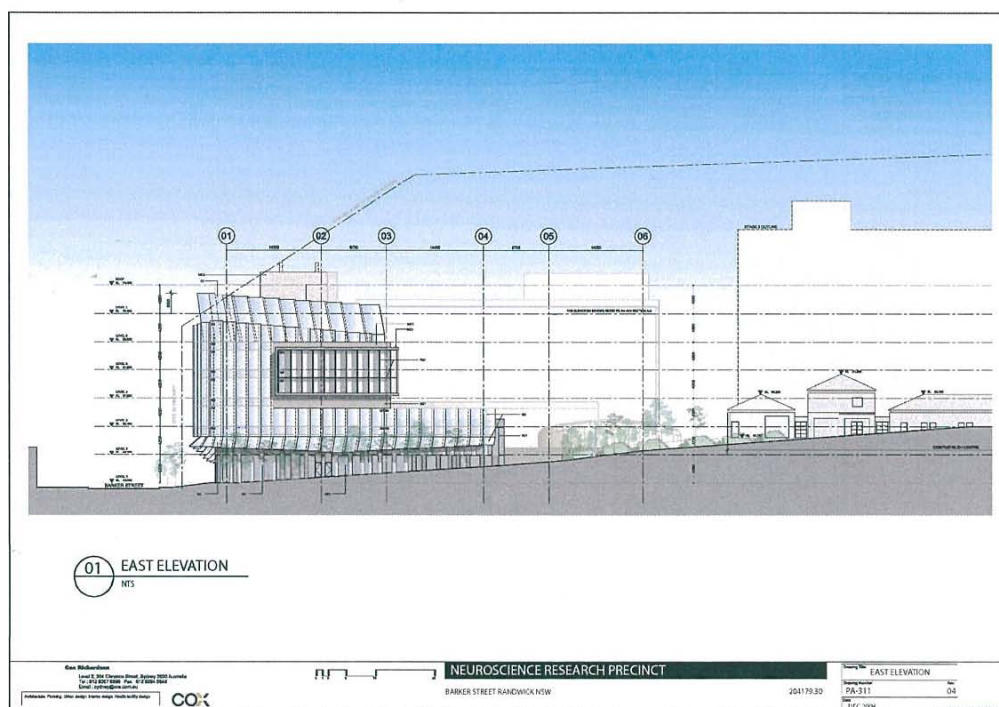
CCIA expressed enthusiasm for the design but did not raise any specific issues as they are not part of the NRP.

Prof Parker raised an issue about the concept plan site (as previously approved by SESIAHS) including the BDI building. He was assuaged by the fact that stage 2 developments did not impact the BDI building and that there was no planning approval requested for stage 3. Prof Parker noted the clinical involvement of BDI in patient care and the need of appropriate building designs to manage mental illness patients. POWMRI noted that the proposed patient contact areas were lower floors and that upper floors of stage 2 were to be within secure, researcher only zones. Prof Parker expressed the view that the building 'crown' may be too Praetorian. Mr Joseph expressed the view that in the current financial climate the NRP building might need to be more austere.

3.0 FURTHER DEVELOPMENT

Further design development of the facade reduced the scale of the “crown” while retaining the design intent and the revised perspective and elevation is presented below.

Note



WINTON ASSOCIATES

**PRINCE OF WALES MEDICAL RESEARCH INSTITUTE
NEUROSCIENCE RESEARCH PRECINCT**

Notes of consultation with the **Department of Environment and Climate Change** in November and December 2008.

Participants	:	Julie Ravallion	-	DECC
		Penny Finlay	-	DECC
		Rod Winton	-	Winton Associates
Distribution	:	Those above		
		Peter Schofield		POWMRI

1.0 CONSULTATIONS

Rod Winton consulted with DECC's Manager Metropolitan, Julie Ravallion on 20 November 2008 and outlined the nature of the NRP project and the status of its development. It was noted that the Director General of the Planning Department had issued the DGRs for the Concept and Project Applications and they require consultation with DECC.

Note

It was noted that SESIAHS had approved the NRP with the application to the Minister and the Department of Planning for Part 3A determination and that the Application is planned to be submitted early in December 2008. It was noted that POWMRI has Commonwealth funding for Stage 2A of the NRP, construction of which will commence as soon as Part 3A Approval has been received.

Note

Julie Ravallion advised that Penny Finlay would be assigned to consider DECC's requirements.

Note

Rod Winton, by e-mail on 20 November 2008 provided DECC with a copy of the short presentation prepared to inform the POWMRI community, its precinct partners and State and Local government authorities of the proposal together with copies of the DGRs and a schedule of the consultants retained by POWMRI for the preparation of the Application and the Environmental Assessment report.

Note



2.0 DECC'S REQUIREMENTS

in response to the DGRs:

Note

- * Alan Ritchie, by e-mail dated 5 December 2008, advised that should the development, have radiation equipment and /or radioactive sources present, those operations will need to comply with the Radiation Control Act and Regulation.
- * Margrit Koettig by e-mail dated 8 December 2008, advised that a full report on the excavation and results of the assessment of Aboriginal heritage values as outlined by Mary Dallas will need to be provided to the AHIMS register at DECC to comply with s91 of the NPW Act.

WINTON ASSOCIATES

Prince of Wales Hospital Medical Research Institute Neuroscience Precinct Stage 2

Minutes of Meeting
10:00am 18th November 2008

Barker Street Bus Stop

Attendance: Eric Graham (EG) State Transit
Robert Rosadi (RR) State Transit
Rod Winton (RW) Winton Associates
Michael Grave (MG) Cox Architects
Tom van Drempt (TvD) Parsons Brinckerhoff

Distribution: Eric Graham, Rod Winton, Michael Grave

Item no.	Description	Action
1	State Transit prefer to have the bus stop stay in its current location as there will continue to be a bus service along this section of Barker Street, and this bus stop provides for local access to the Hospital and the high school.	
2	A location between the entry and exit ramps of the porte cochere is the preferred option. Bus frequency should not cause a major sight distance issue (similar to bus stop in front of a service station).	
3	Plan for Eastern Network currently being considered has Route 359 being replaced by Route 357 on the section of Barker Street between Avoca Street and Botany Street. It will have approximately a 30 minute frequency, with higher during the peaks.	
4	State Transit would like to see a plan of the area. This plan should show the width of the footpath.	MG / TvD to provide plan
5	A bench seat could be provided, but a shelter would obstruct sight distance for vehicles exiting the porte cochere.	
6	The porte cochere should be driveway style entry and exit to reinforce that the vehicles using the facility give way to pedestrians. Pedestrians should be able to continue along the footpath at-grade.	
7	The ambulance station may stay at its current location. There is insufficient space remaining between the current ambulance driveway and the start of the porte cochere for the bus stop.	
8	A temporary location for the bus stop will be required during construction (Stage 2A) until the porte cochere is completed. A temporary location east of Easy Street is considered feasible. Minimum length for bus zone is 30 metres, including draw-in (can overlap No Stopping). Make up to next power pole (7.6m No Stopping draw-in and 28.9m bus zone). Width of carriageway from kerb to double barrier line (6.3m) is wide enough for a bus stop and traffic lane.	

Item no.	Description	Action
9	All these agreements are subject to the approval of the Traffic Committee and consultation with Randwick Council.	
10	Written evidence of consultation is required for Part 3A Study. PB to provide minutes from on-site meeting along with plan. State Transit to provide written comments.	TvD / EG

Prince of Wales Hospital Medical Research Institute Neuroscience Precinct Stage 2

Minutes of Meeting
10:00am 18th November 2008

Barker Street Bus Stop

Attendance: Tony Lehmann (TL) Randwick City Council
Aurelio Lindaya (AL) Randwick City Council
Rod Winton (RW) Winton Associates
Michael Grave (MG) Cox Architects
Tom van Drempt (TvD) Parsons Brinckerhoff

Distribution: Tony Lehmann, Rod Winton, Michael Grave

Item no.	Description	Action
1A	TL is concerned about pedestrian safety at the porte cochere on Barker Street. A potential measure to address the concerns is to increase the exit angle.	TvD / MG to realign porte cochere
1B	There may be problems with congestion inside the porte cochere. Widen to allow a vehicle to pass a stoped vehicle.	TvD to run Autotrack
1C	Vehicles should not be able to turn right out of the porte cochere. Extend splitter median island.	TvD / MG
1D	Buses at the bus stop obstruct the siht distance of departing vehicles. Move bus stop away from exit to porte cochere. Landscape between porte cochere and footpath to define the area.	TvD / MG
1E	Include plan of management for porte cochere in case future operation is not as intended.	TvD
2	TL noted that the bushes on corner of Easy Street and Barker Street should be trimmed by three metres and replaced with fencing to improve sight distance for left-turning vehicles of pedestrians intending to cross Easy Street..	Noted
3	Temporary relocation of the bus stop during the Stage 2A construction works – no issues	
4	No plans for road upgrades in the immediate area.	
5	No other future developments to be included in the assessment.	
6	AL – preferred the use of the RTA Bicycle design guide for bicycle facilities.	Noted
7	Council is not in favour of uncontrolled right-turns from Hospital Road.	Noted
8	A resident parking scheme has already been installed in nearby streets.	
9	No nett increase in on street parking – accepted by Council	

Item no.	Description	Action
10	Base assumptions for future on existing travel patterns. – accepted by Council	
11	RTA requested that TMAP process be undertaken for development.	
12	Intersection modelling to be done with SCATES for Avoca Street intersections and SIDRA for other intersections– accepted by Council	
13	Modelling Stages 2D and 3 for future traffic impact. – accepted by Council	

18 December 2008

JBA Urban Planning Consultants
Level 7, 77 Berry Street
North Sydney NSW 2060

Attention: Claire Wright

Dear Ms Wright,

**Major Project and Concept Plan Application for the Prince of Wales
Medical Research Institute – Confirmation of meeting minutes**

Thankyou for your email of 28 November 2008 following our earlier meeting on your Major Project and Concept Plan application. I am writing to confirm your minutes of our meeting (attached). We have added comments in italics for your consideration.

Please feel welcome to telephone me on 9399 0612 if you have any questions.

Yours faithfully,

David Mooney
Senior Urban Planner

Meeting with Randwick Council on 18 November 2008

Attendees

David Mooney – RCC	Peter Schofield – POWMRI
Kerry Kyriacou - RCC	Jeff Saunders - Winton Associates
John Flanigan - RCC	John Richardson – Cox Richardson
Sima Truvert - RCC	Michael Grave – Cox Richardson
Joanna Hole - RCC	Amanda Harvey – JBA
	Claire Wright – JBA
	Nemisio Biason – Taylor Thompson Whitting
	Tom van Drempt – Parsons Brinkerhoff

1.0 KEY ISSUES RAISED WITHIN THE MEETING

1.1 The Project

- Council sought clarity over the distinction between the Concept Plan application and the Project Application
 - AH described the distinction and Stages 1, 2(a-d) and 3 (Black Dog)

Randwick Council: We would like to see a well developed staging plan for the proposal. We note from your comments at the meeting the stages 2 a-d are intended to be 'self-contained' so that they can be carried out in any order, depending on funding.

- Council sought confirmation in regard to the relationship between the UNSW and POW campus' and the site
 - The site is to interact with UNSW in terms of research activities, lesser with the hospital activities
 - Research using patients from the hospital may be undertaken.

1.2 Relocation of the Ambulance Station

- Council sought clarification as to what would happen to the Ambulance station
 - Ongoing discussions are occurring with the Ambulance Service as to whether they will be encompassed within the new development or be relocated.
 - Council suggested that a possible location could be the site to the south of Barker Street – however the current zoning of the land does not allow it.

Randwick Council: Consideration should be given to the site requirements for a larger 'hub' station in-line with the ambulance services' planning.

1.3 Architectural Design

- Height
 - 24m plus plant (6 storeys at 4.2m floor to ceiling across whole of Barker Street frontage which totals 28m)
 - Easy Street steps down in height
- Setback
 - Design adopts a 6m setback on Barker Street

- Given the siting of Hospital Road it was set out that there is substantial setback from any adjoining properties – it equates to approximately 15m

Randwick Council: The design will require an appropriate contextual relationship and setback to Easy Street and the heritage listed memorial gardens. The heritage study should also explore potential impacts on the Struggletown Heritage Conservation Area. The architectural design should also be mindful of impacts on the neighbouring residential areas.

- Auditorium
 - POWMRI confirmed that conferences etc are held presently, but they envisage using the auditorium as a separate entity to the research facility
- Other considerations
 - Council was interested in seeing a more prominent structure on Barker Street to mark the entrance to the Hospital

Randwick Council: We are concerned with the cohesiveness of the whole of the POW Campus. The proposed major project and concept plan should take into account the future hierarchy of buildings and movement corridors on the whole of the site. In particular, the Barker Street entry should have a legible arrival sequence.

1.4 Traffic & Car Parking

- Car Parking
 - 37 spaces are currently provided on the site plus an additional 29 on Hospital Road.
 - Modal split on current use is 50% cars, 20% public transport, 8% bicycle, the rest walking – Council asked what the modal split was for other hospitals
 - The scheme aims to assume no net increase in on street car parking will occur
 - Council supports no increased on-street parking – application will need to demonstrate how this can be done.
 - Council asked if there was capacity in the hospital car park – this is being considered within the Traffic report
 - Council asked what the capacity will be for visitation for conferences using the auditorium etc – TvD to get figures and include it within analysis
- Discussions as to how the residential scheme on the UNSW site will affect on-street parking.
 - Council confirmed that there is no residential parking scheme in place for the development, so there is likely to be more pressure for on-street parking

Randwick Council: An earlier residential parking scheme for UNSW relied upon Council introducing parking meters in the area. However, the Council do not now support the introduction of parking meters and it is now working on another residential parking scheme.

- Public Transport
 - TvD outlines that local bus stops are adjacent to the site on Barker Street and their frequency is 1 every half an hour
 - TMap will be produced
- Council asked if there would be increased employment of the site
 - The employment numbers will double

Randwick Council: The traffic assessment will need to consider the increase in employment. We note from your comments at the meeting the increase may be more than double.

- Council asked if there would be linked trips with UNSW/ much movement between the UNSW and POWMRI sites
 - It was confirmed that people from UNSW already use the site
 - POWMRI hope to relocate some of the UNSW research facilities on the POW site
 - Council would like to see more integration with all the activities on the POWMRI site
 - It was stated that the POW has not got a strategic plan in terms of integrating all the uses/ facilities within the campus

1.5 Stormwater and Civil Works

- Council asked if the following could be considered:
 - escape route for over flow on low point of Barker Street
 - demonstration that the floor levels will be protected from 1 in 100 yr event
 - free board requirements
- Council offered to provide details to NB

1.6 Other matters

- Council confirmed that they would be happy to take on the assessment of applications under delegation from the Department of Planning and have sufficient capacity to do so

Randwick Council: Subsequent to our meeting, Our Strategic Planning Coordinator discussed with you our current planning project for the Randwick Health-Education specialised centre. There are opportunities for POWMRI to respond to key directions coming from this project, particularly at stage 3. For example, the POWMRI masterplan allows for connection from Hospital Road and Francis Martin Drive up to East Street and the POW main entry.



PRINCE OF WALES MEDICAL RESEARCH INSTITUTE NEUROSCIENCE RESEARCH PRECINCT

Notes of consultation with the **South Eastern Sydney Illawarra Area Health Service.**

Participants :	Andrew Bernard	SESAHS
	Jacqui Grossmith	SESAHS
	Mark McGeachie	SESAHS
	Peter Schofield	POWMRI
	Rod Winton -	Winton Associates
Distribution :	Those above	
	Terry Clout	SESAHS
	Neville Onley	SESAHS

1.0 EARLIER CONSULTATIONS

Peter Schofield has consulted with Terry Clout, Neville Onley and Jacqui Grossmith and outlined the nature of the NRP project and its proposed development program. It has been noted that POWMRI has obtained a Commonwealth Government grant of \$30M plus interest to develop Stage 1 and Stage 2A of the NRP.	Note
SESAHS has indicated that POWMRI's tenure will be extended to a 40 year lease over the land with a 40 year renewal option for the development of the NRP and formalisation of tenure is being progressed.	Note
Peter Schofield has provided a copy of POWMRI's proposal for the NRP to SESAHS together with a draft of its letter and JBA Planning's assessment for consideration by the Minister for determination as a Part 3A major proposal and provision of the Director Generals Requirements.	Note
SESAHS, in response to Prof Schofield's request of 6 February 2008, gave its approval as land owner to the submission of the Application to the Minister and Department of Planning for a Part 3A application on 15 April 2008, noting that:	Note
* The site for the Neuroscience Research shall be all of the land bounded by Barker St, Easy St, Hospital Rd and Francis Martin Drive excluding the Kiloh Building and the Destitute Children's Memorial Gardens	Note

- * The current car park operator IAG/Metro is to be consulted and given the first right of refusal to any new car parking within the development
- * The MRI lease should be renegotiated to accord with the proposed building program
- * Community Consultation is to be addressed
- * Utilities, infrastructure and other site services are to be provided as part of the NRP without placing limitations on the remainder of the site
- * Contamination of the site is to be POWMRI's responsibility
- * Heritage and Aboriginal and European archaeology are to be POWMRI's responsibility
- * Future SESIAHS, POWMRI and Black Dog staffing is to be identified and considered
- * Any relocation of the Ambulance service within the NRP is to be approved by NSW Health and ASNSW

2.0 SESIAHS'S REQUIREMENTS

Peter Schofield and Rod Winton met with Andrew Bernard, Jacqui Grossmith and Mark McGeachie on 9 October 2008 and reviewed the presentation prepared to inform the POWMRI Board, Senior Scientists and Group Leaders of the NRP design concept and the intended staged implementation strategy. The following matters were discussed and are being progressed:	Note
The DGRs for the Part 3A Concept and Project application and Environmental Assessment Report have been received and copies were forwarded to SESIAHS on 23 November 2008.	Note
The provision of parking and the effects on traffic and public transport are being addressed in response to the DGRs.	Note
The extent of disruption to existing parking during and after construction is being assessed together with likely time frames for the Stage 2 redevelopment work and will be included in the EAR.	Note
SESIAS is considering developing additional parking for the POW Hospital precinct as a possible PPP project and any further discussion on additional parking with IAG/Metro is to be carried out by SESIAHS.	Note
The lease for the MRI facilities has been extinguished and POWMRI is acquiring the 3T MRI machine from the former lessee.	Note



The impact of the NRP development on precinct neighbours and adjacent owners is being evaluated in the preparation of the EAR. Note

The requirements of the NRP Stage 2 Project for increased utilities and the impact on existing utilities and services to the POW Hospital precinct, Kiloh and Black Dog is being considered in consultation with State and Local government authorities in response to the DGRs. Note

Contamination, Heritage and Aboriginal and European archaeology are being evaluated in response to the DGRs in the preparation of the EAR. Note

Future SESIAHS, POWMRI and Black Dog staffing is being evaluated in response to the DGRs. Note

Discussions have been held with the Ambulance Service and new facilities could be located within Stage 2B of the new NRP complex with drive through entry and egress on redevelopment or new facilities of the same size, could be provided on another site by way of a separate funding grant at a cost of \$2.5M plus land. Note

Funding has been sought from the State Government and the SESIAHS indicated that any amount of \$20M or more is likely to require SESIAHS or Department of Commerce procurement guidelines to be followed, if it is not provided by way of a grant. These include, not normally increasing the value of any contract (by way of a variation to increase the scope of work) by more than 20% of the opening contract sum without competitive tendering. Note

3.0 FURTHER DEVELOPMENT

It was noted that POWMRI intends to submit the Part 3A Concept and Project Application in December with the objective of obtaining approval during March 2009. Note

The assessments being carried in response to the DGRs and the preparation of the EAR are being made available to SESIAHS as work is being progressed. A copy of the Application will be provided to SESIAHS on completion of the documentation. Note

WINTON ASSOCIATES