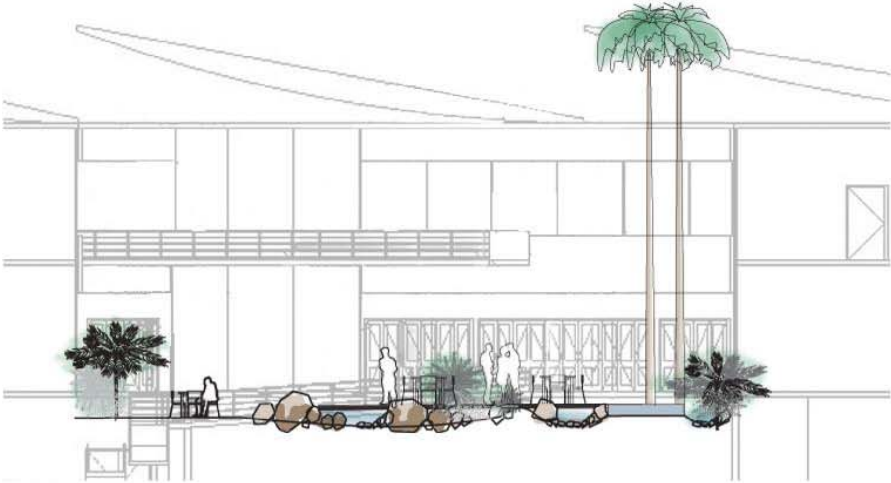
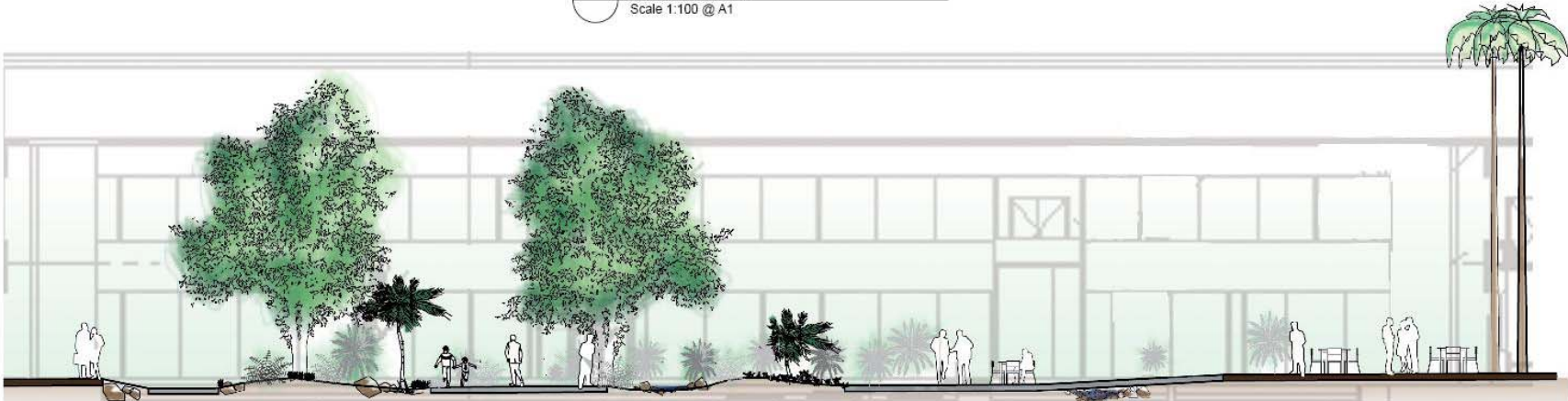


Indicative Plant List

<u>Scientific Name</u>	<u>Common Name</u>	<u>Mature Height</u>
<u>Trees</u>		
<i>Magnolia grandiflora</i>	Bull Bay Magnolia	10m
<u>Shrubs</u>		
<i>Acacia cognata</i> 'Limelight'	Limelight	500mm
<i>Gardenia</i> 'Radican'	Prostate Gardenia	
<u>Groundcovers and Grasses</u>		
<i>Ophiopogon japonicus</i>	Mondo Grass	200mm
<i>Viola hederacea</i>	Native Violet	100mm
<u>Ferns and Palms</u>		
<i>Asplenium australasicum</i>	Bird's Nest Fern	1.5m
<i>Asplenium nidus</i>	Birds nest Fern	1m
<i>Cyathea australis</i>	Rough Tree Fern	4m
<i>Cyathea cooperii</i>	Coin Spot Tree Fern	5m
<i>Dicksonia antarctica</i>	Soft Tree Fern	2m
<i>Doodia aspera</i>	Rasp Fern	300mm
<i>Gleichenia microphylla</i>	Coral Fern	300mm
<i>Livistona australis</i>	Cabbage-tree Palm	20m



Surgicentre Section A  
Scale 1:100 @ A1



Surgicentre Section B  
Scale 1:100 @ A1

Imagescape Design Studios (ABN 18 652 436 122) is an architect corporation registered under the provisions of the NSW Architects Act 2003. Notified architects are Christine Kelly registration no. 8000 & Stephen Phillips registration no. 4608

Consultant Team:



Amendment Issue:

No.	Description	Date

Imagescape Design STUDIOS  
health studio



C2.12 The Fusion Building 22 - 36 Mountain Street, Ultimo NSW 2007 p. 02 5215 1000 e: studio@imagescape.com.au



NORTH POINT

ILLAWARRA INTERNATIONAL SPECIALIST & SURGICENTRE  
Avondale Rd, Huntley  
LA VIE DEVELOPMENTS

Landscape Detail

Project number	03	SK 191 L
Date	04/03/09	
Drawn by	Author	
Checked by	Checker	
Plot stamp	29/05/2009 4:14:54 PM	

K:\LAH403 surgIP08va00003 Surgicentre - issue12.rvt

EA Submission