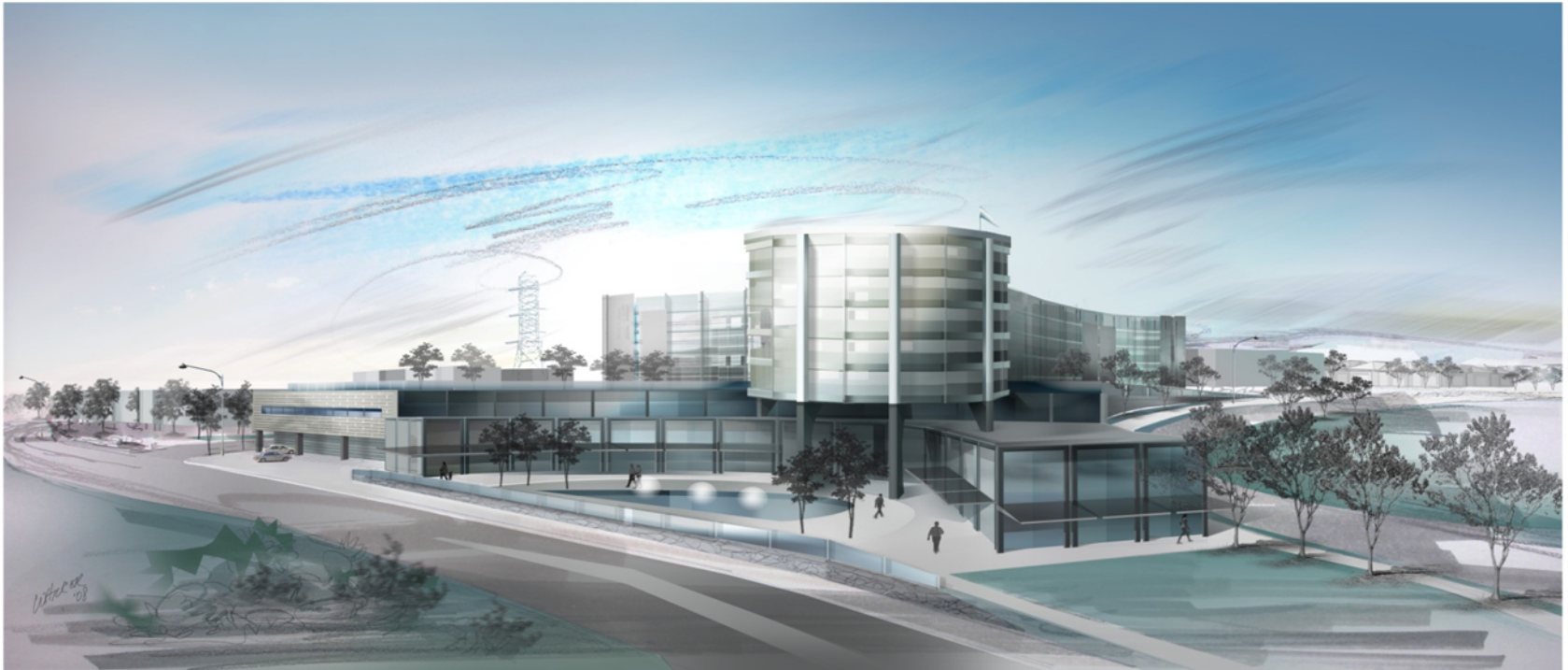


PROJECT OUTLINE

352 Bed Tertiary Referral Private Hospital

For & on behalf of La Vie Developments Pty Ltd



draft concept ILLAWARRA INTERNATIONAL HEALTH PRECINCT

Dedicated to your Health

<http://www.illawarrahealth.com.au>

Index

• <i>Introduction</i>	<i>page 4</i>
• <i>Issues-Benefits-The Key</i>	<i>page 5</i>
• <i>Strategic Location</i>	<i>page 6</i>
• <i>Local Context Map</i>	<i>page 7</i>
• <i>Site Map</i>	<i>page 8</i>
• <i>Employment, Education, Expedition</i>	<i>page 9</i>
• <i>Projected Population Graph</i>	<i>page 10</i>
• <i>Direct Economic Benefits</i>	<i>page 11</i>
• <i>Socio-Economic Outcomes</i>	<i>page 12</i>
• <i>Amenity</i>	<i>page 13</i>
• <i>2004-205 Health Services Summary</i>	<i>page 14</i>
• <i>Focus on Benefits</i>	<i>page 15</i>
• <i>A Letter from Professor Don Iverson UOW</i>	<i>page 16-17</i>
• <i>Key Demographic Trends</i>	<i>page 18</i>
• <i>Site Plan & Building Layout</i>	<i>page 19</i>
• <i>The Model</i>	<i>page 20-22</i>
• <i>On Site Facility</i>	<i>page 23</i>
• <i>Integrated On-Site Support Facility</i>	<i>page 24</i>
• <i>Sequence Staging & Breakdown of Services</i>	<i>page 25-27</i>
• <i>Proposed Staging Plan</i>	<i>page 28</i>
• <i>Critical Alliances & Collaboration</i>	<i>page 29</i>
• <i>Integration Flow Chart</i>	<i>page 30</i>
• <i>Initial Stages (Artist Impression)</i>	<i>page 31</i>

Introduction by Michael Wilkinson.

Illawarra Regional Development Group Pty Ltd

Project Managers

The Vision

“To develop a major Private Tertiary Referral Hospital and Health Care Precinct to service the growing regional population as well as providing a high quality medical resource of national and international standard.”

The Result

“Facilitating excellence and efficiency in health delivery, within an empathetic environment. Juxtaposed with staff development and education”



STRATEGIC ISSUES

The epicentre of the regions ever burgeoning population destined for West Dapto. Proximity to all transport, having design features ensuring ease of access to all Transport Networks.

FOCUS ON BENEFITS

How the proposal will satisfy the needs and demands of the future population of the City of Wollongong and the greater Illawarra including the Shoalhaven, Eurobodalla and the South coast of NSW inclusive of Socio Economics outcomes and Community Amenity

“THE VITAL KEY”

A forward step toward the provision of medical manpower for the greater Illawarra, by providing 21st Century technology and facilities. The various components of the proposal (Staging) and its enormity, addresses all facets including, population growth along with ongoing education which ensures delivery of medical needs.



Strategic Location

1. Epicenter of the Illawarra's expanding population
2. Close proximity to the Albion Park Rail Airport
3. Only 2.5km away from West Dapto CBD
4. 18.1km/16 min by car to the Wollongong CBD
5. Immediate availability of Utilities and Services
6. Central to & situated on the only flood free access road to West Dapto new release area
7. Uninhibited by Rail Crossings
8. A 700mtr stroll to the proposed Huntley Station
9. 2.5 km from West Dapto Railway Station
10. Flood free access to the F6 Freeway
11. Flood free access to the Princes Highway
12. Fronting onto a major Public Bus Transport Service Link
13. Directly adjacent to existing residential developments