

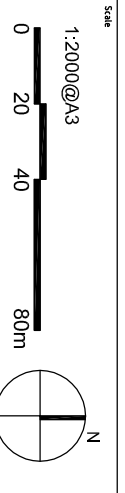


West Metro Preliminary Environmental Assessment

Westmead Station and Stabling / Vent Indicative Location Plan

LEGEND

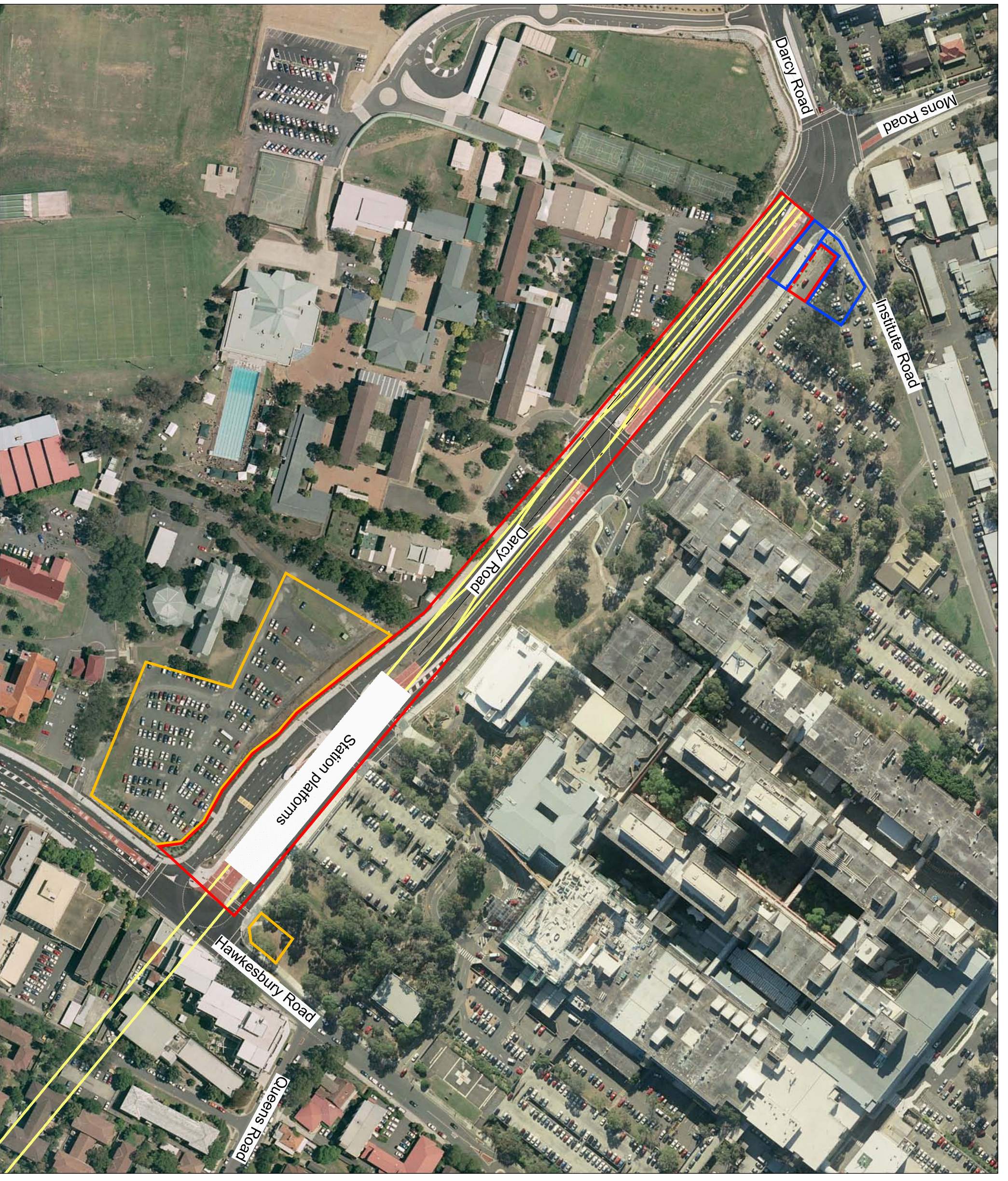
- Project Worksite Boundary —
- Staged Project Worksite Boundary —
- Options for Project Worksite Boundary —
- Proposed Rail Alignment —



STATUS: PEA

Drawn: WST-2100-PEA-2100-AR-0002

Rev: A



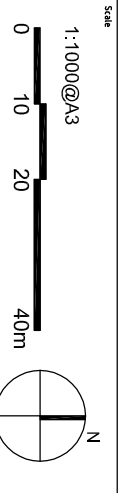


West Metro Preliminary Environmental Assessment

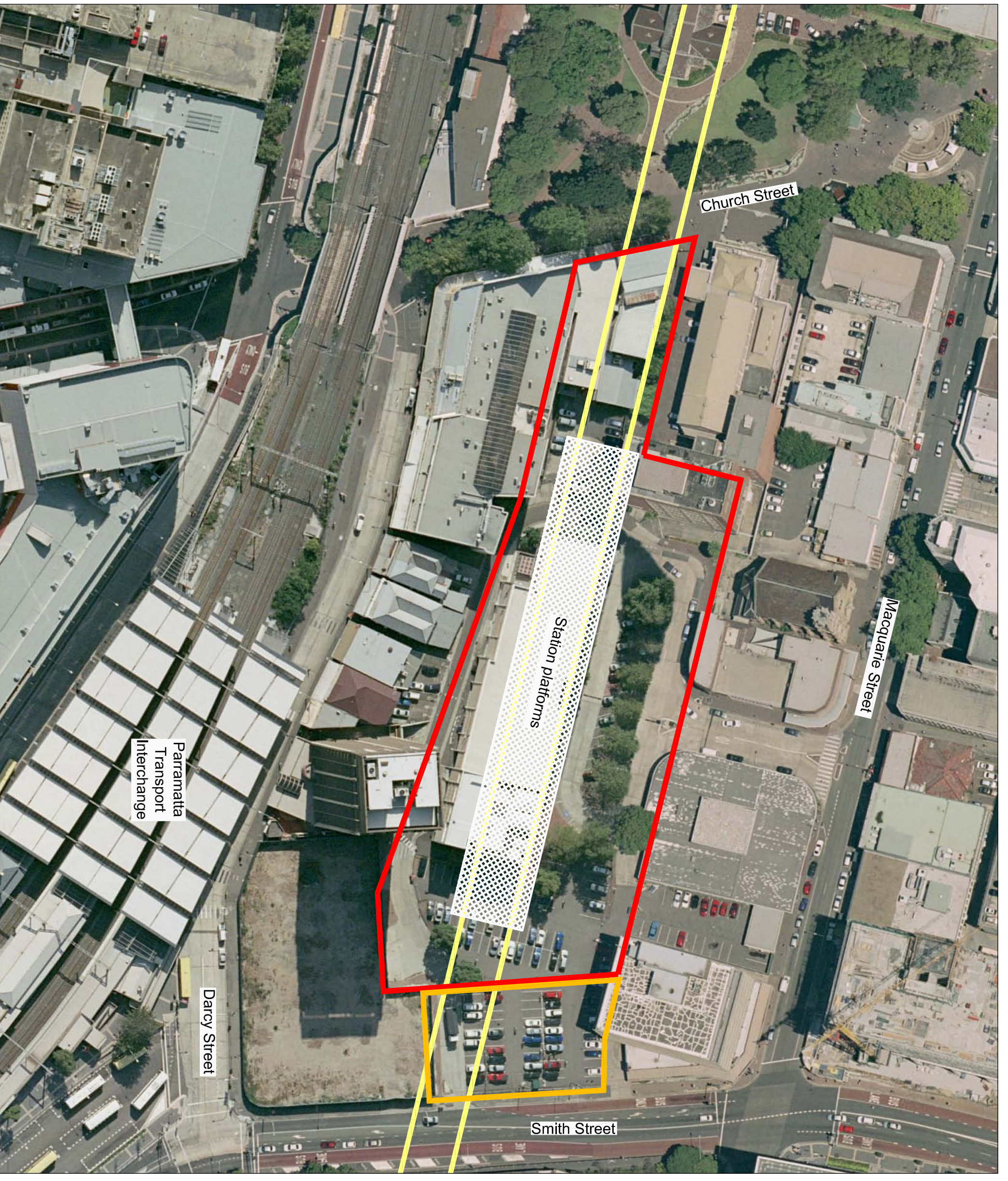
Paramatta Indicative Station Location Plan

LEGEND

- Project Worksite Boundary
- Staged Project Worksite Boundary
- Options for Project Worksite Boundary
- Proposed Rail Alignment



STATUS: PEA
 Dwg No: WST-2100-PEA-2000-AR-0002
 Rev: A



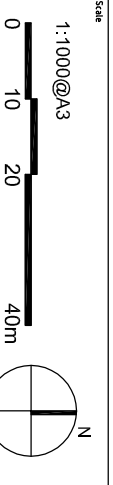


West Metro Preliminary Environmental Assessment

Camellia
Indicative Station Location Plan

LEGEND

- Project Worksite Boundary
- Staged Project Worksite Boundary
- Options for Project Worksite Boundary
- Proposed Rail Alignment



STATUS: PEA
Drawn: WST-2100-PEA-1900-AR-0003
Rev: A





West Metro Preliminary Environmental Assessment

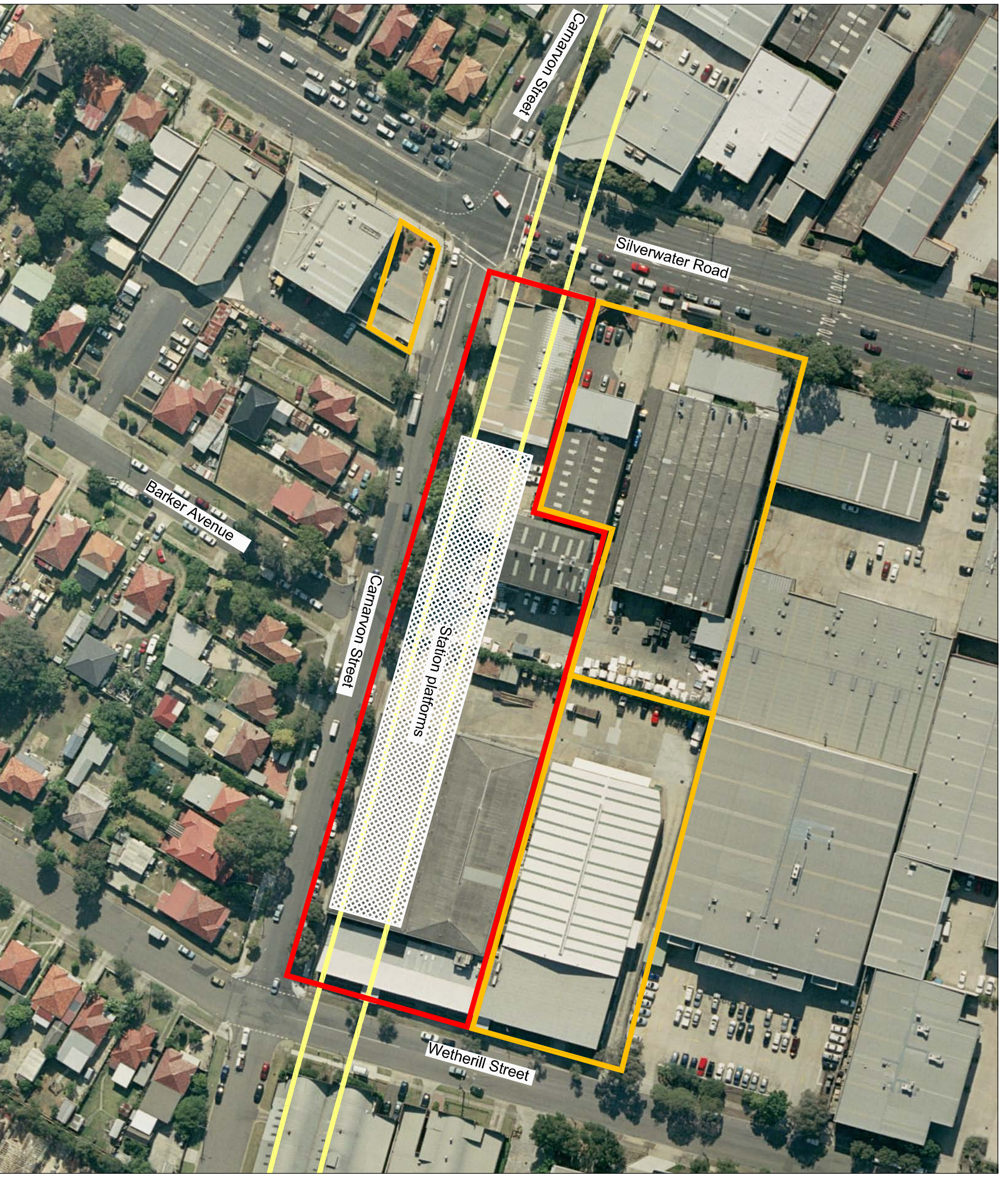
Silverwater Indicative Station Location Plan

LEGEND

- Project Worksite Boundary
- Staged Project Worksite Boundary
- Options for Project Worksite Boundary
- Proposed Rail Alignment

Scale: 1:1000@A3

STATUS: PEA
Dwg No: WST-2100-PEA-1800-AR-0003
Rev: A



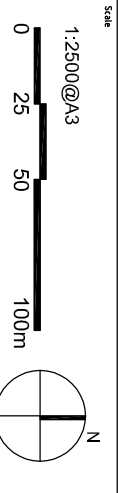


West Metro Preliminary Environmental Assessment

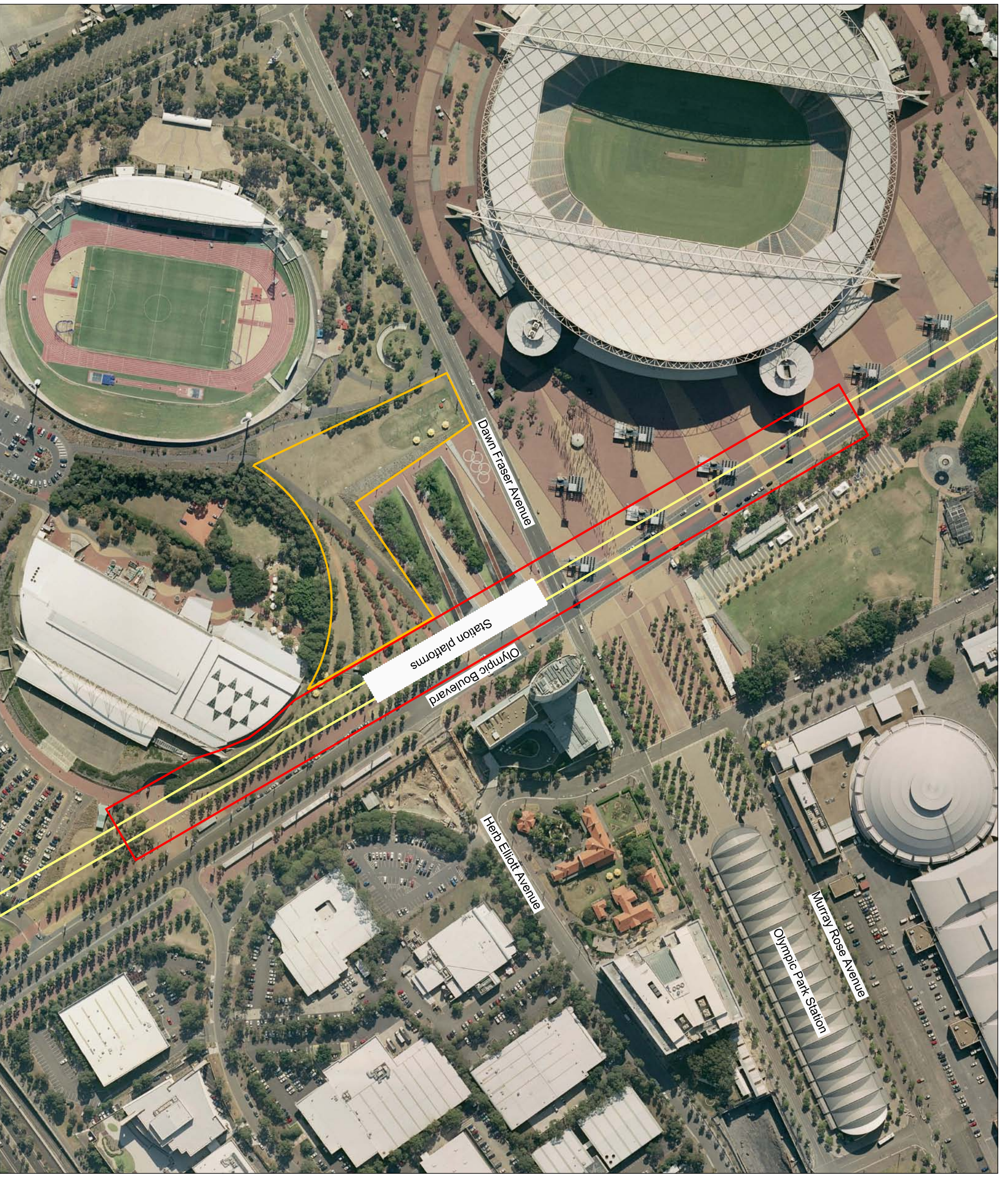
Sydney Olympic Park
Indicative Station Location Plan

LEGEND

- Project Worksite Boundary
- Staged Project Worksite Boundary
- Options for Project Worksite Boundary
- Proposed Rail Alignment



Status: PEA
Drawn: WST-2100-PEA-1700-AR-0005
Rev: A



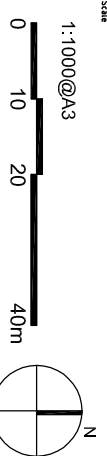


West Metro Preliminary Environmental Assessment

Strathfield Indicative Station Location Plan

LEGEND

- Project Workspace Boundary
- Staged Project Workspace Boundary
- Options for Project Workspace Boundary
- Proposed Rail Alignment



STATUS: PEA

Dwg No: WEST-2100-PEA-1600-AR-0002

Rev: A





West Metro Preliminary Environmental Assessment

Burwood Indicative Station Location Plan

LEGEND

- Project Worksite Boundary
- Staged Project Worksite Boundary
- Options for Project Worksite Boundary
- Proposed Rail Alignment

Scale: 1:1000@A3

0 10 20 40m

STATUS: PEA

Drawn: WST-2100-PEA-1500-AR-0003

Rev: A

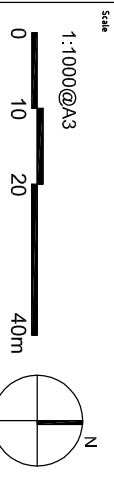




West Metro Preliminary Environmental Assessment

Five Dock Indicative Station Location Plan

- LEGEND**
- Project Workspace Boundary
 - Staged Project Workspace Boundary
 - Options for Project Workspace Boundary
 - Proposed Rail Alignment



Sheet: A
Page: 1
Project: WST-2100-PEA-1400-AR-0002



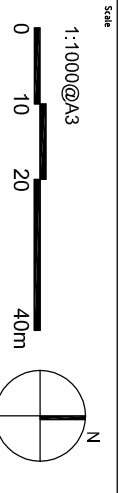


West Metro Preliminary Environmental Assessment

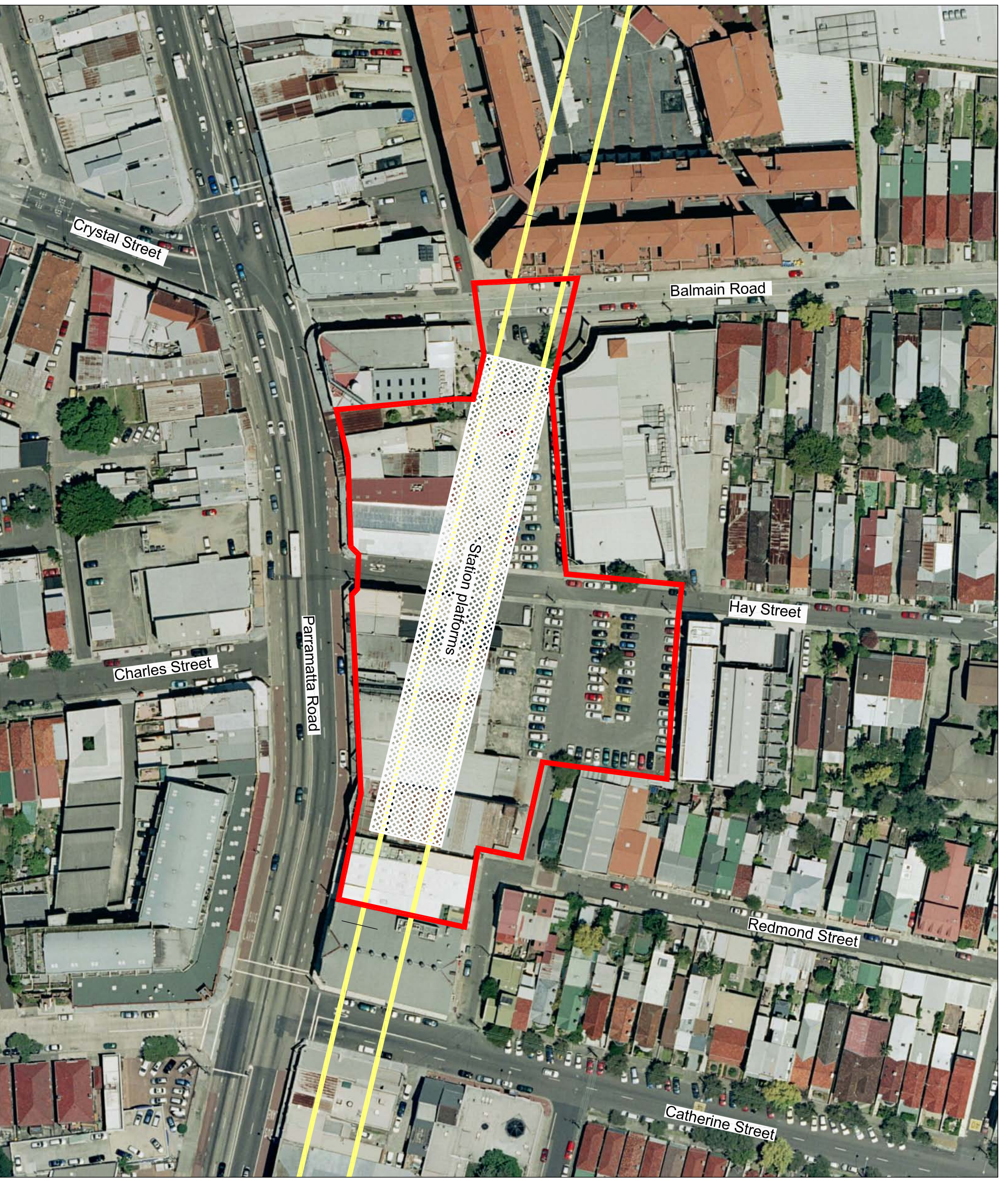
Leichhardt Indicative Station Location Plan

LEGEND

- Project Workspace Boundary
- Staged Project Workspace Boundary
- Options for Project Workspace Boundary
- Proposed Rail Alignment



STATUS	DATE	BY	REV
PEA		WST-2100-PEA-1300-AR-0002	A



West Metro Preliminary
Environmental Assessment

Camperdown Station and St John's Oval
Tunnel Work Site Indicative Location Plan

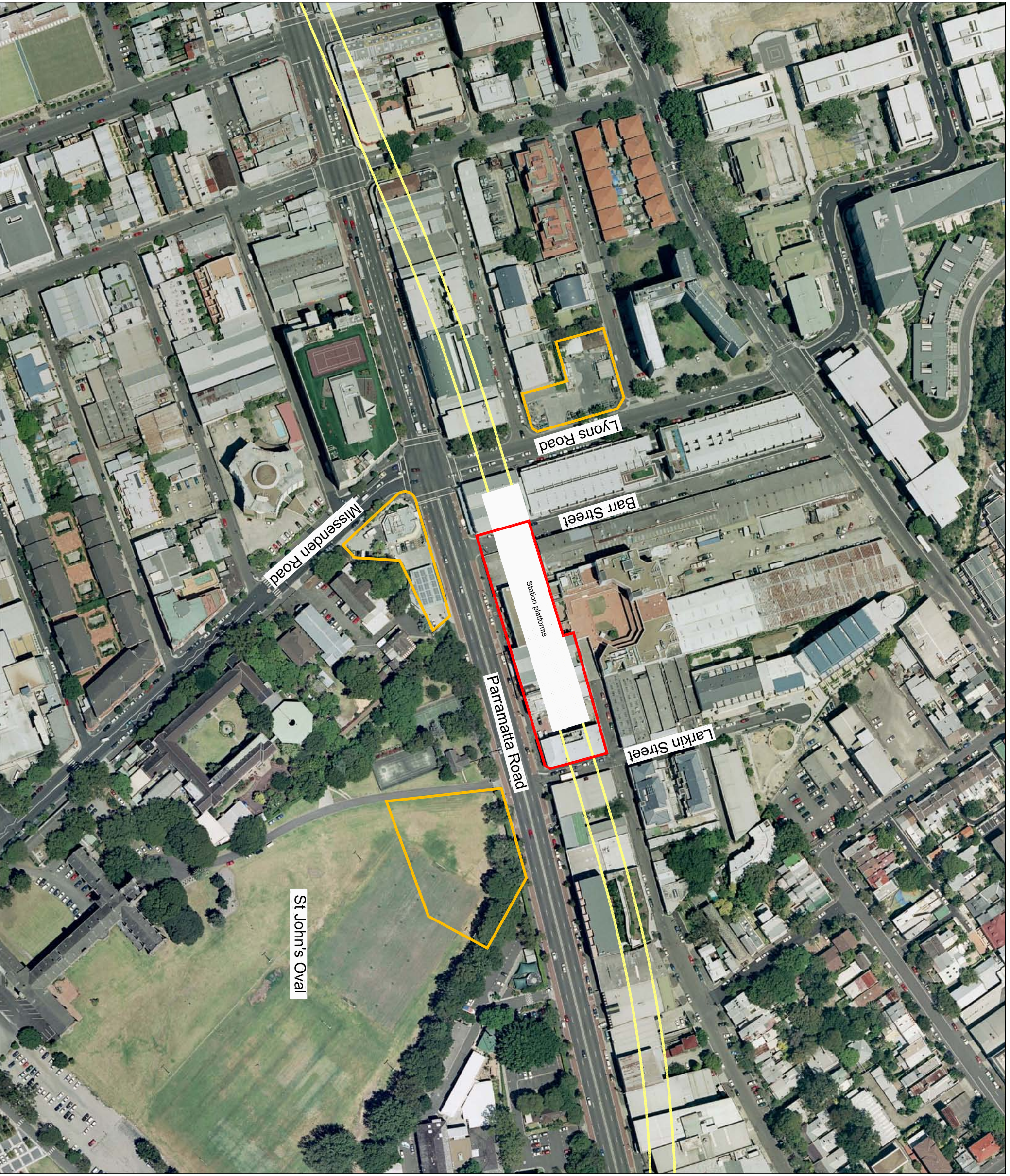
LEGEND

- Project Worksite Boundary
- Staged Project Worksite Boundary
- Options for Project Worksite Boundary
- Proposed Rail Alignment

Scale
1:2000@A3

0 20 40 80m





STATUS: PEA
Proj No: WST-2100-PEA-1200-AR-0002
Rev: A




West Metro Preliminary
Environmental Assessment

Broadway - Sydney University
Indicative Station Location Plan

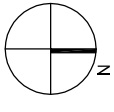
LEGEND

-  Project Worksite Boundary
-  Staged Project Worksite Boundary
-  Options for Project Worksite Boundary
-  Proposed Rail Alignment

Scale
1:1000@A3



0 10 20 40m



STATUS
PEA

Drawn
WST-2100-PEA-1100-AR-0002

Rev.
A

