



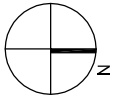
West Metro Preliminary Environmental Assessment

Carnarvon Street Tunnel Work Site Indicative Location Plan

LEGEND

- Project Worksite Boundary —
- Staged Project Worksite Boundary —
- Options for Project Worksite Boundary —
- Proposed Rail Alignment —

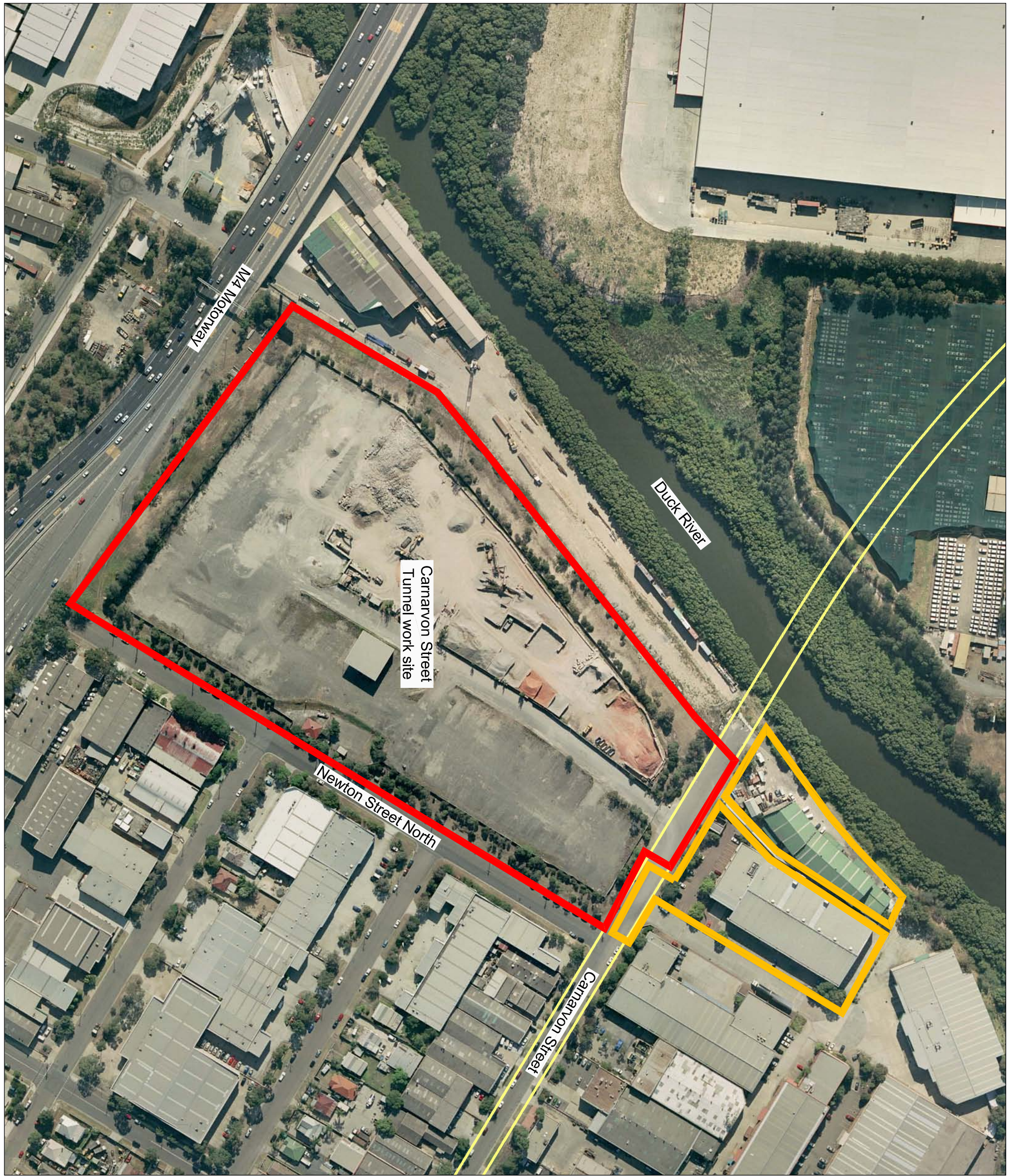
Scale
1:2000@A3



Status
PEA

Dwg No.
WST-2100-PEA-1802-AR-0002

Rev.
A



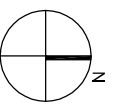
West Metro Preliminary
Environmental Assessment

Homebush Bay Drive Tunnel Work site
and Vent Indicative Location Plan

LEGEND

- Project Worksite Boundary
- Staged Project Worksite Boundary
- Options for Project Worksite Boundary
- Proposed Rail Alignment

Scale
1:5000@A3
0 50 100 200m



Status
PEA
Dwg No.
WST-2100-PEA-1602-AR-0002
Rev.
A

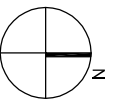
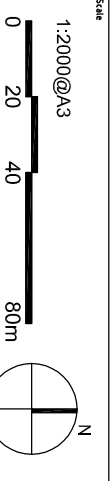


West Metro Preliminary Environmental Assessment

Cintra Park
Optional Tunnel Work Site
Indicative Location Plan

LEGEND

- Project Worksite Boundary
- Staged Project Worksite Boundary
- Options for Project Worksite Boundary
- Proposed Rail Alignment



Status
PEA

Drawn
WST-2100-PEA-1302-AR-0004

Rev
A



West Metro Preliminary Environmental Assessment

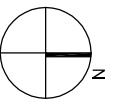
Five Dock Vent
Indicative Location Plan

LEGEND

- Project Worksite Boundary —
- Staged Project Worksite Boundary —
- Options for Project Worksite Boundary —
- Proposed Rail Alignment —

Scale

1:2000@A3



Status
PEA

Dwg No.
WST-2100-PEA-1402-AR-0002

Rev.
A





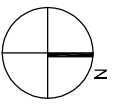
West Metro Preliminary Environmental Assessment

Algje Park
Optional Tunnel Work Site
Indicative Location Plan

LEGEND

- Project Worksite Boundary
- Staged Project Worksite Boundary
- Options for Project Worksite Boundary
- Proposed Rail Alignment

Scale
1:2000@A3
0 20 40 80m



Status
PEA

Drawn
WST-2100-PEA-1302-AR-0002

Rev
A





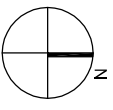
West Metro Preliminary Environmental Assessment

Lambert Park Tunnel Work Site Indicative Location Plan

LEGEND

- Project Worksite Boundary —
- Staged Project Worksite Boundary —
- Options for Project Worksite Boundary —
- Proposed Rail Alignment —

Scale
1:2000@A3



Status
PEA

Drawn
WST-2100-PEA-1302-AR-0003

Rev
A

